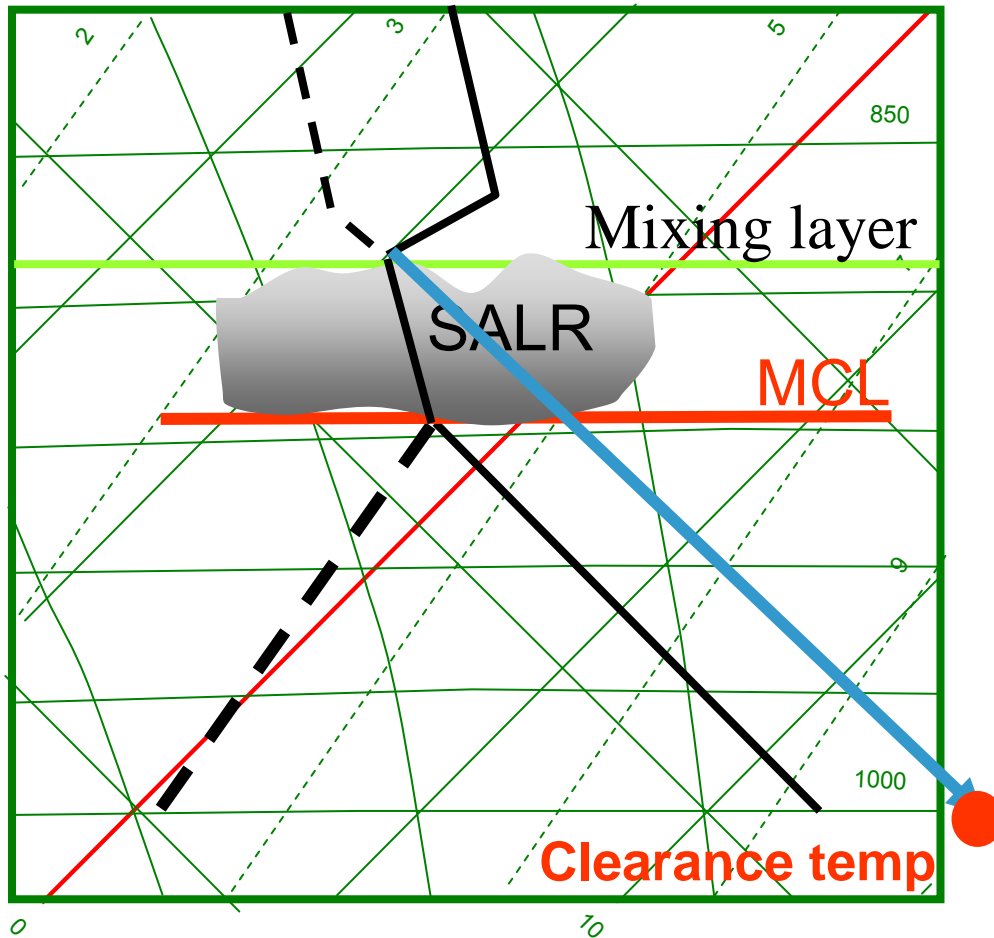


Three mechanisms

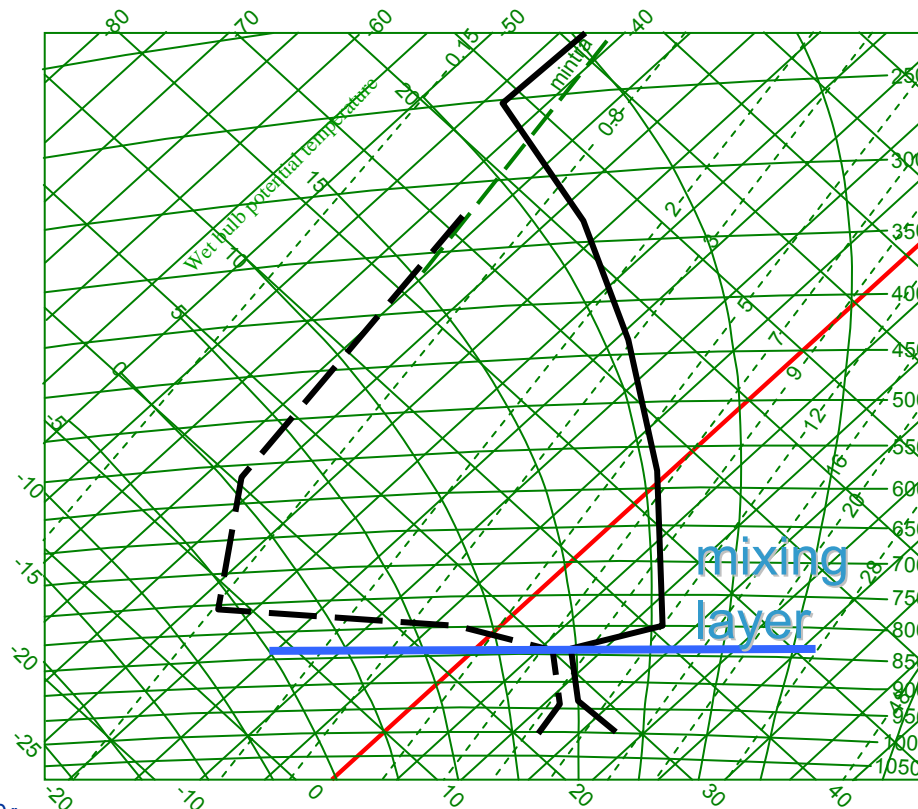
- Insolation
- increased wind
- advection of drier air

Clearance by insolation



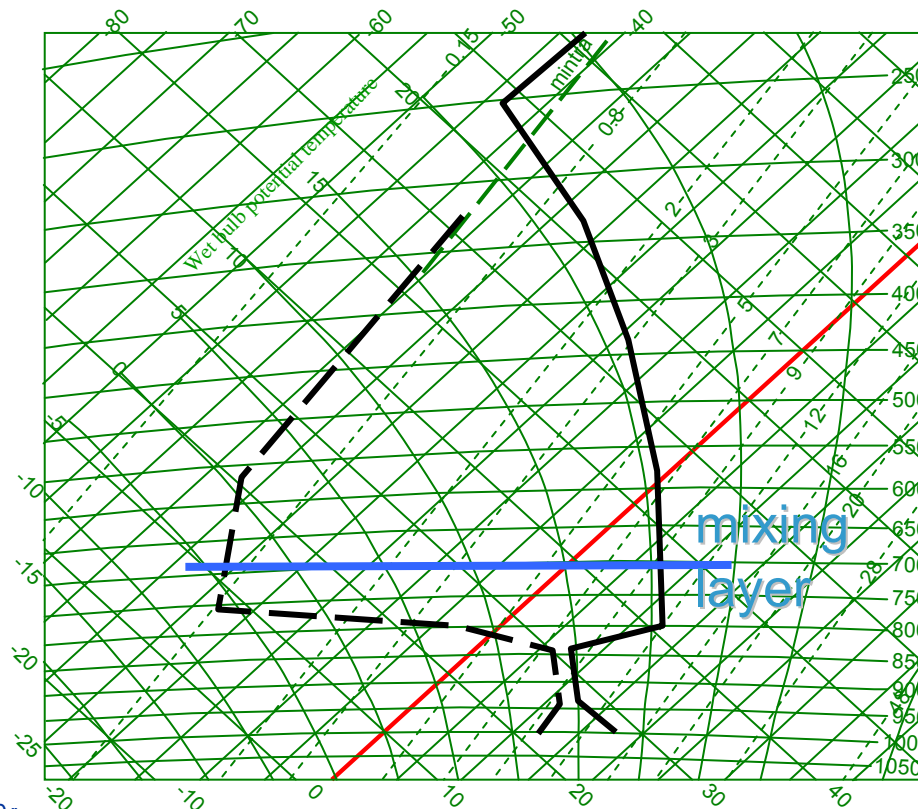
- Draw a DALR from the stratus top to the surface pressure

- Increasing the wind speed will deepen the mixing layer ...



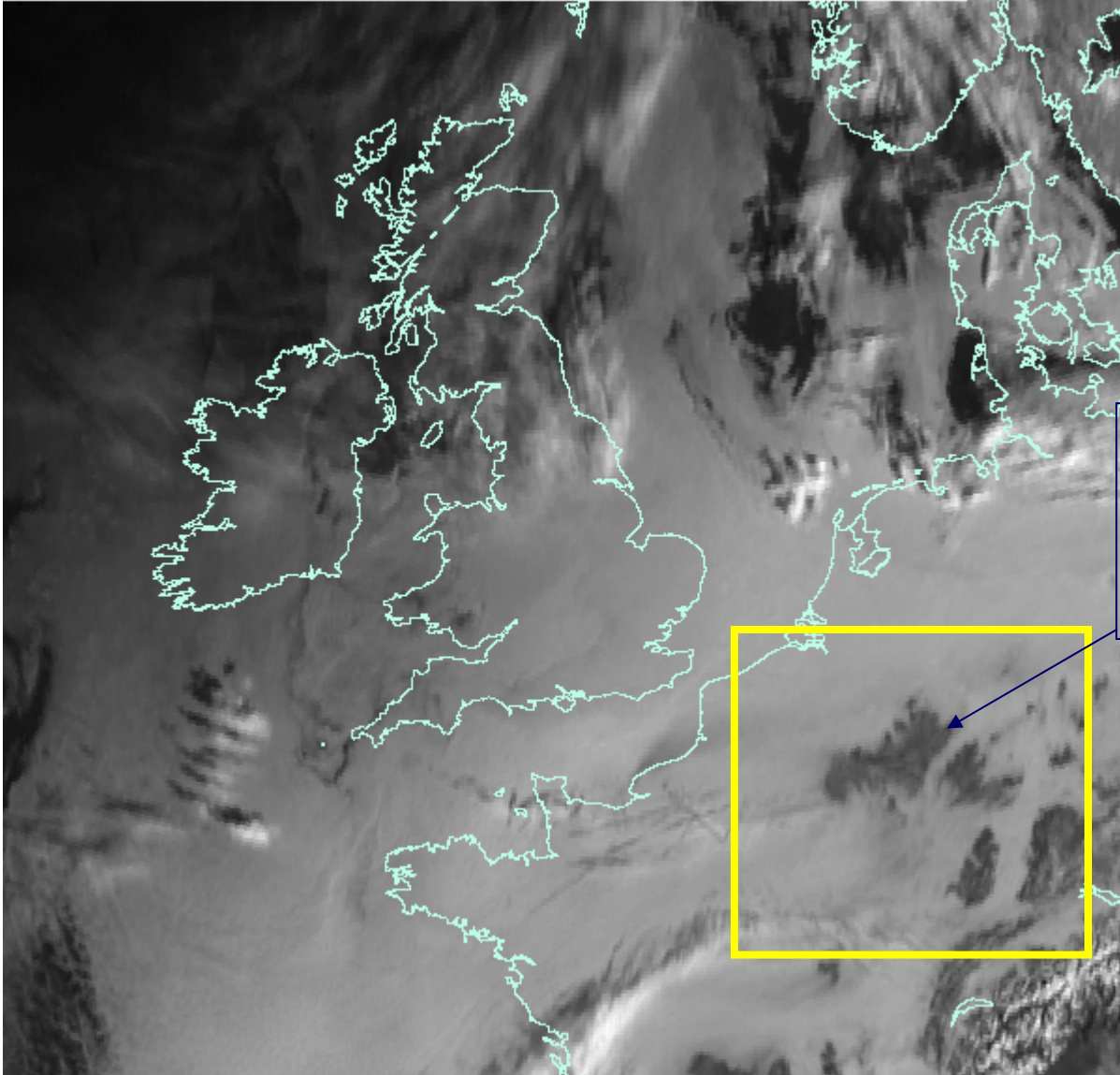
Clearance by increased wind

- ... and can mix drier air from above into the cloudy layer which may disperse the stratus



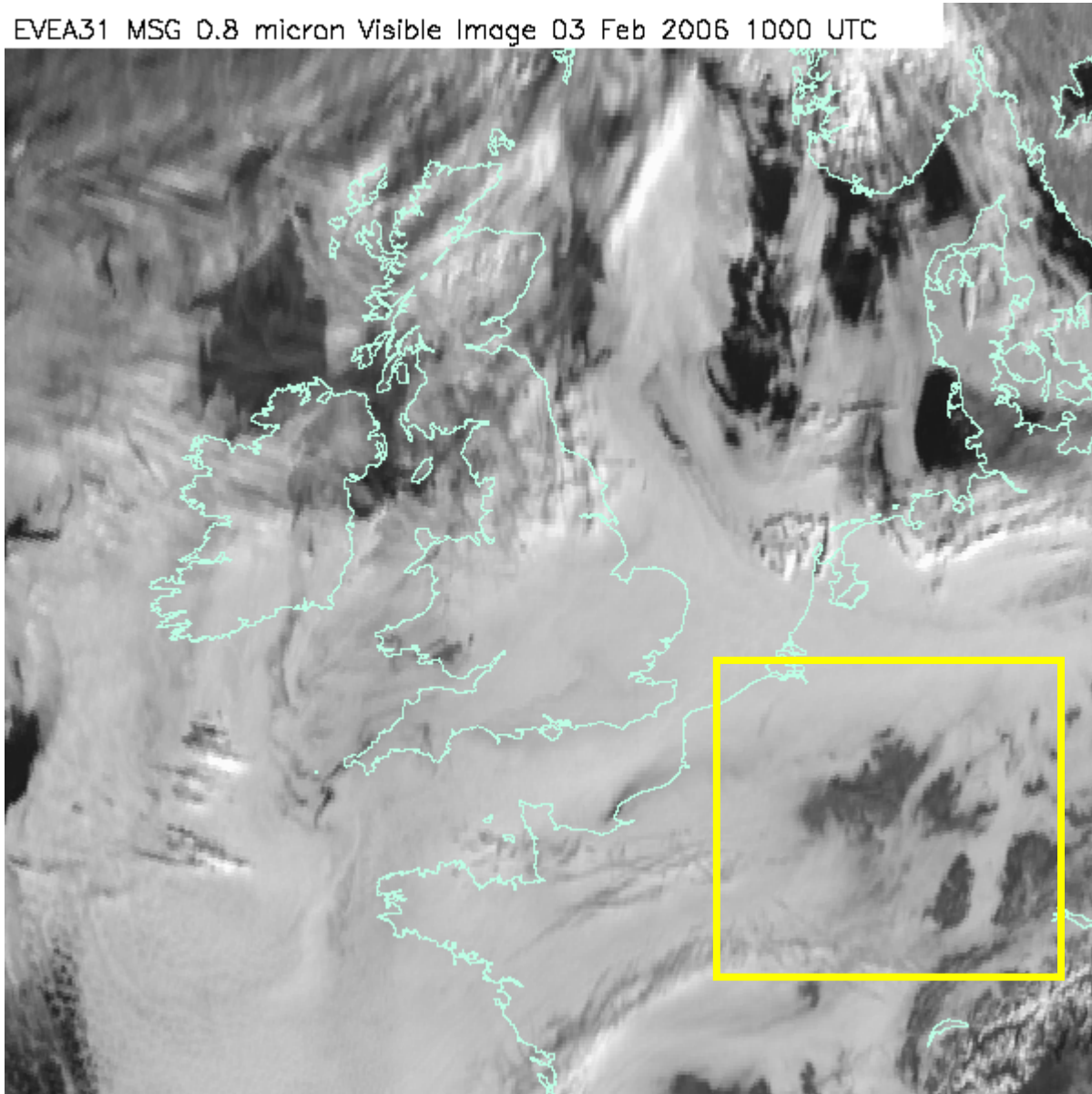
- drier air from another source may clear the stratus
- use satellite pictures to observe rear edge of stratus
- Example follows.

EVEA31 MSG 0.8 micran Visible Image 03 Feb 2006 0900 UTC

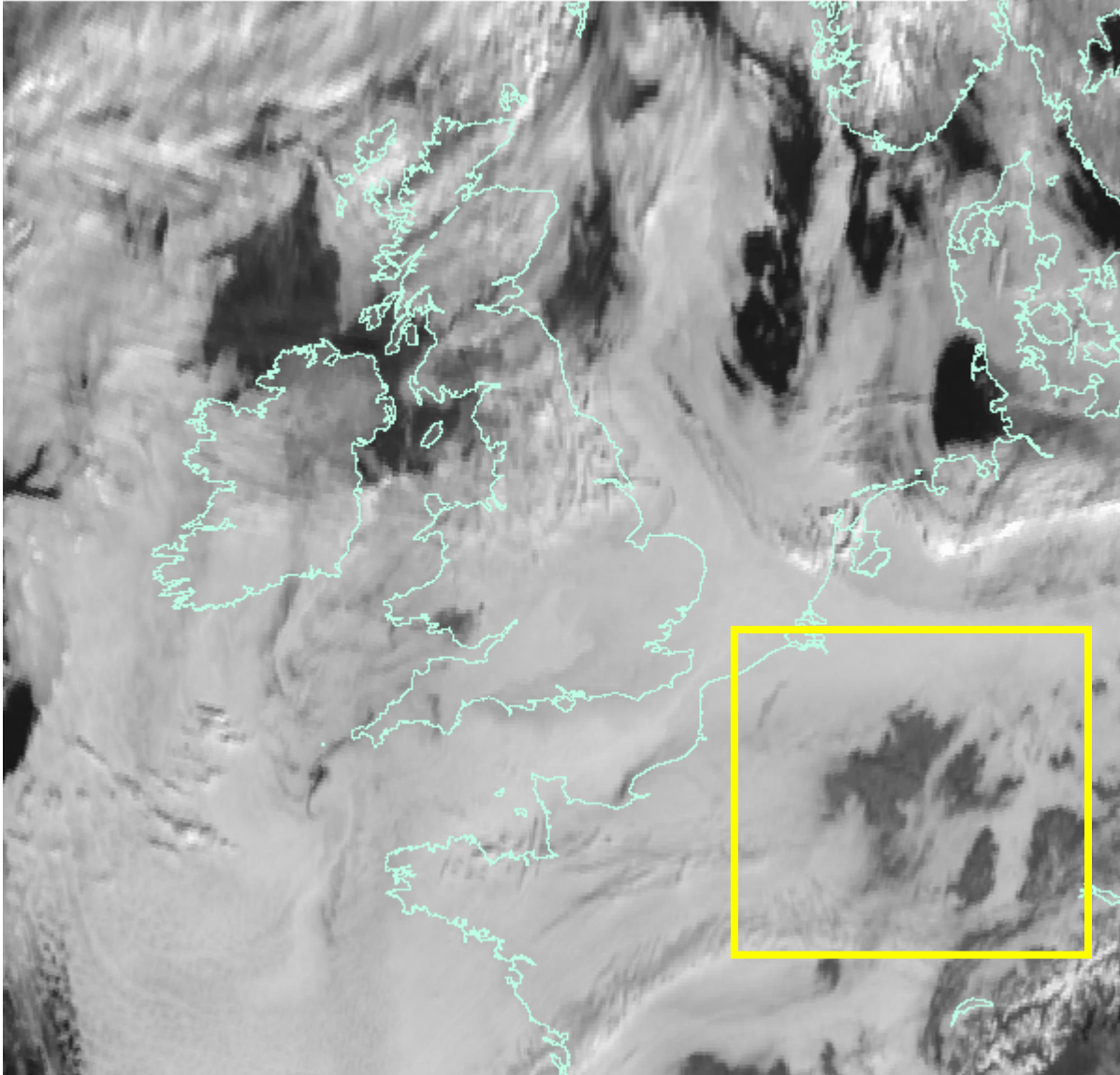


Area of drier
air spreads
south west with
time

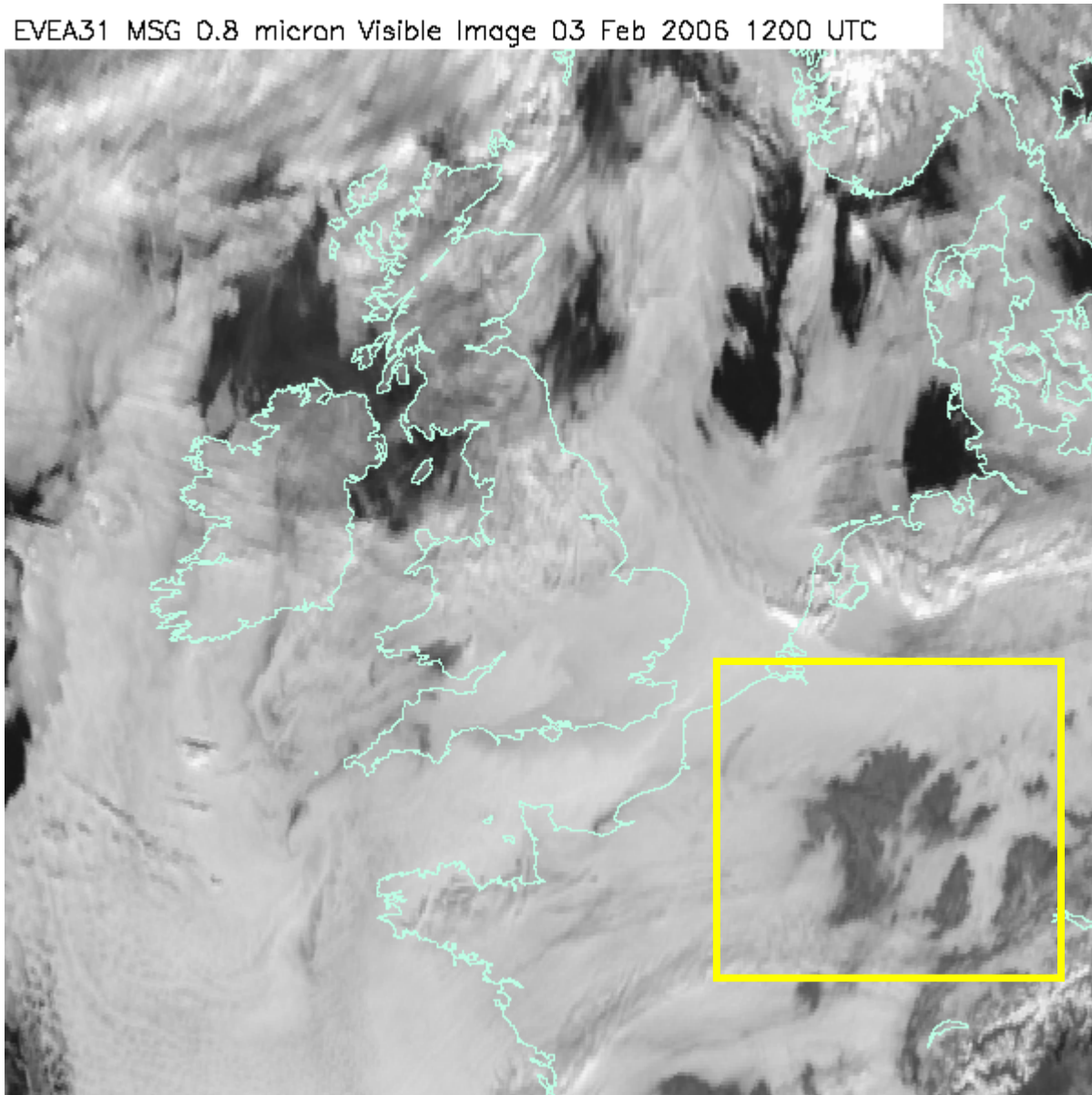
EVEA31 MSG 0.8 micron Visible Image 03 Feb 2006 1000 UTC



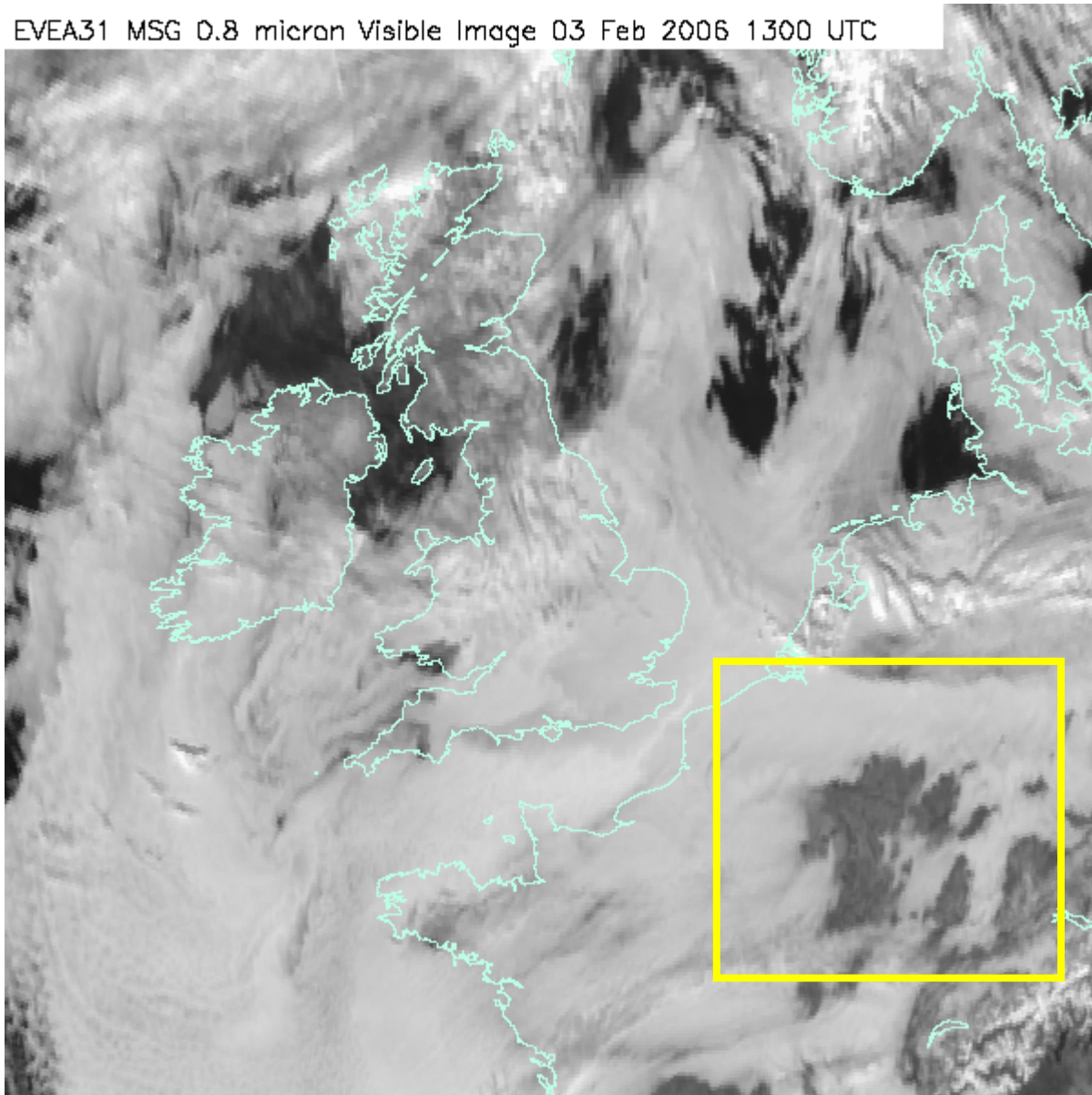
EVEA31 MSG 0.8 micron Visible Image 03 Feb 2006 1100 UTC



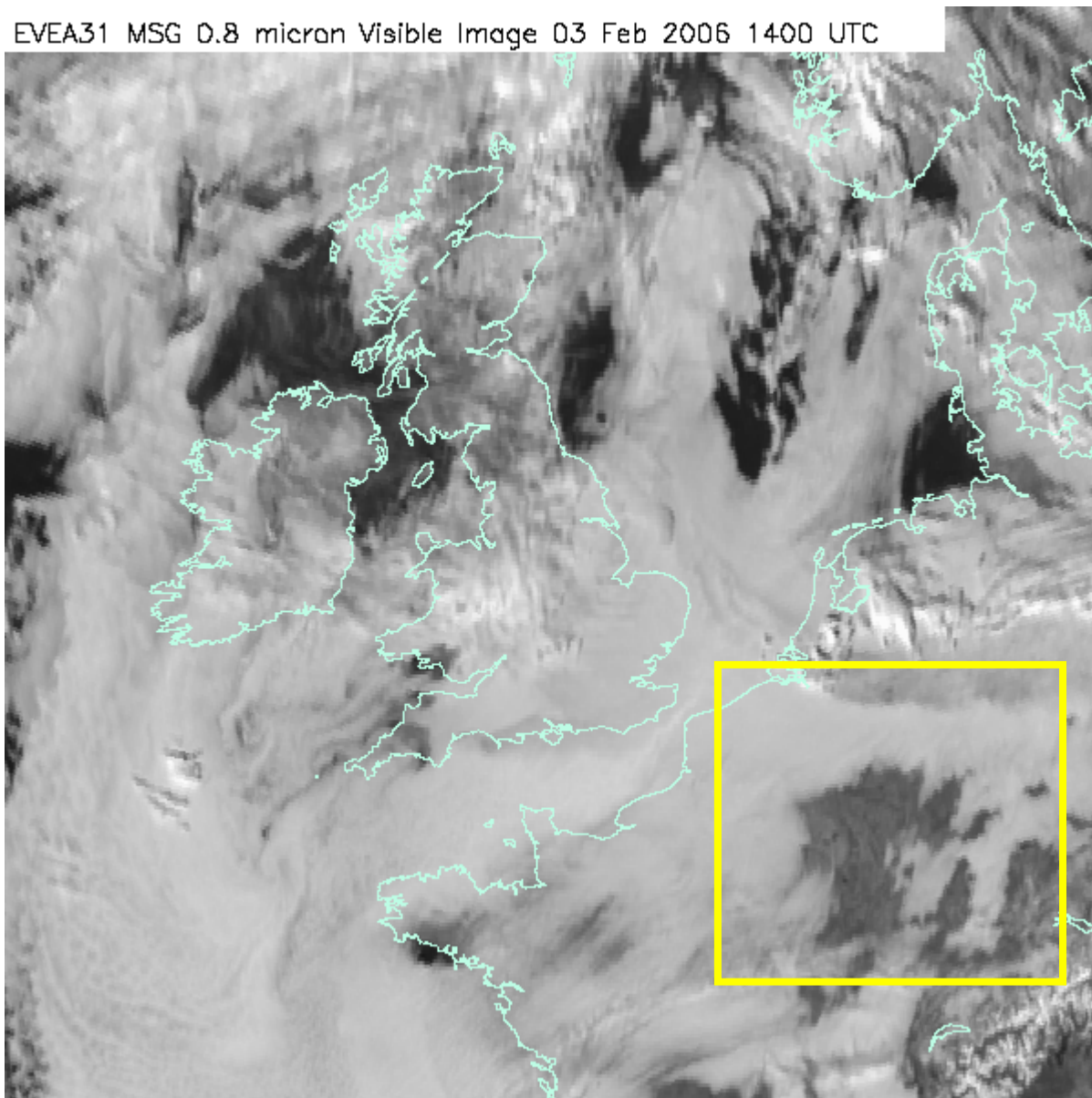
EVEA31 MSG 0.8 micron Visible Image 03 Feb 2006 1200 UTC



EVEA31 MSG 0.8 micron Visible Image 03 Feb 2006 1300 UTC



EVEA31 MSG 0.8 micron Visible Image 03 Feb 2006 1400 UTC



EVEA31 MSG 0.8 micron Visible Image 03 Feb 2006 1500 UTC

