



# Drought Information Statement for Northeastern Wyoming and Western South Dakota

## Valid October 3, 2024

Issued By: National Weather Service Rapid City, SD

Contact Information: [nws.rapidcity@noaa.gov](mailto:nws.rapidcity@noaa.gov)

- This product will be updated in November 2024, or sooner, if drought conditions change significantly.
  - Please see all currently available products at <https://drought.gov/drought-information-statements>.
  - Please visit <https://www.weather.gov/unr/DroughtInformationStatement> for previous statements.
  - Please visit <https://www.drought.gov/drought-status-updates> for regional drought status updates.
- 
- Extreme (D3) Drought to Abnormally Dry (D0) Conditions extend across all of northeastern Wyoming and most of western South Dakota.
  - Hot temperatures continue to exacerbate drought conditions.



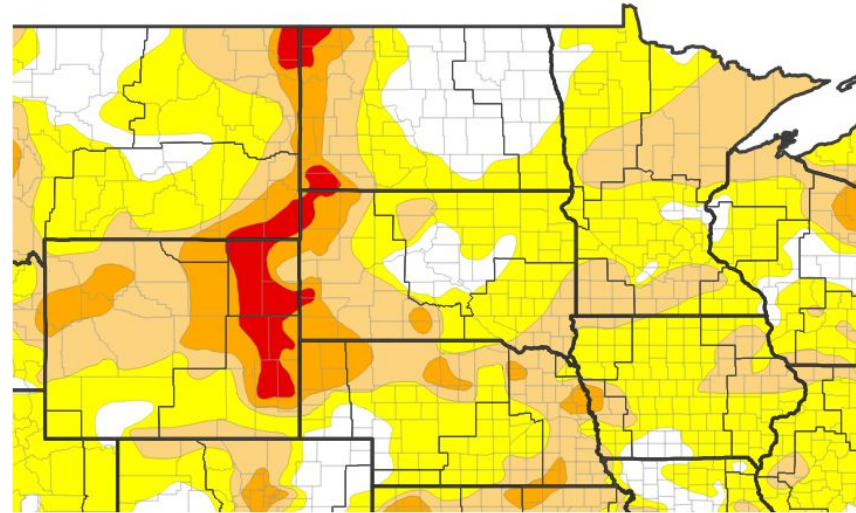


# U.S. Drought Monitor

Link to the [latest U.S. Drought Monitor](#) for northeastern Wyoming and western South Dakota

- Drought intensity and Extent
  - **D4 (Exceptional Drought):** None occurring.
  - **D3 (Extreme Drought):** Portions of Weston, Campbell, Crook, far western Pennington, and western Harding Counties.
  - **D2 (Severe Drought):** Portions of counties along the Wyoming/South Dakota border, northwestern South Dakota and south central South Dakota.
  - **D1 (Moderate Drought):** Portions of Perkins, Butte, Meade, Pennington, Lawrence, Custer, Oglala Lakota, Jackson, Haakon, Bennett, Mellette, Todd, and Crook Counties.
  - **D0: (Abnormally Dry):** the rest of western South Dakota.

## U.S. Drought Monitor



## U.S. Drought Monitor



Source(s): NDMC, NOAA, USDA; image courtesy of Drought.gov

Data Valid: 10/01/24

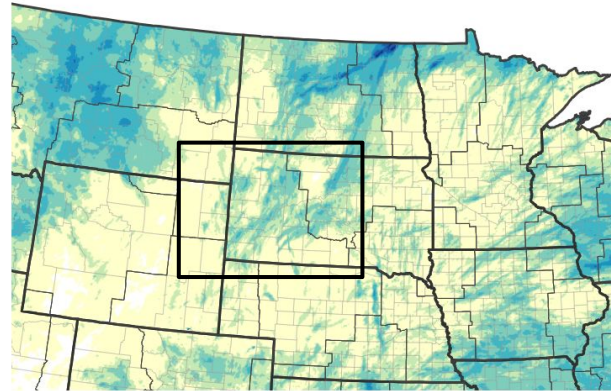




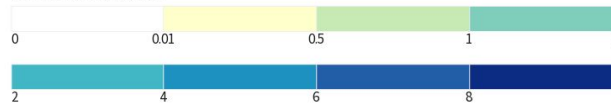
# Precipitation: Last 30 Days

- Below normal precipitation the past 30 days across northeastern Wyoming and western South Dakota.
- Some pockets of above average precipitation across the western South Dakota plains, but not enough to help drought conditions.

30-Day Precipitation Accumulations (Inches)

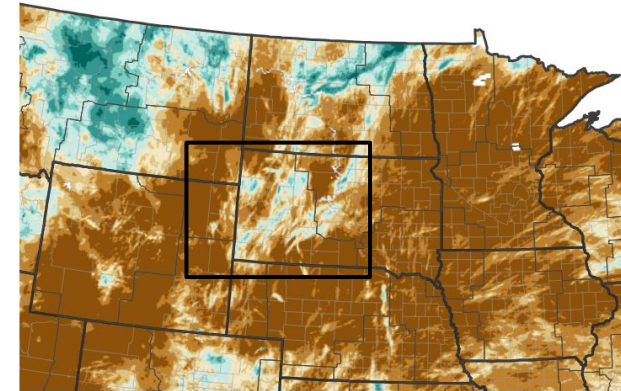


Inches of Precipitation

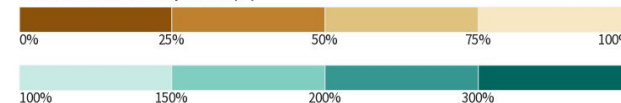


Source(s): National Weather Service Multi-Radar Multi-Sensor System; image courtesy of Drought.gov Last Updated: 10/07/24

30-Day Percent of Normal Precipitation



Percent of Normal Precipitation (%)



Source(s): National Weather Service Multi-Radar Multi-Sensor System; image courtesy of Drought.gov Last Updated: 10/06/24



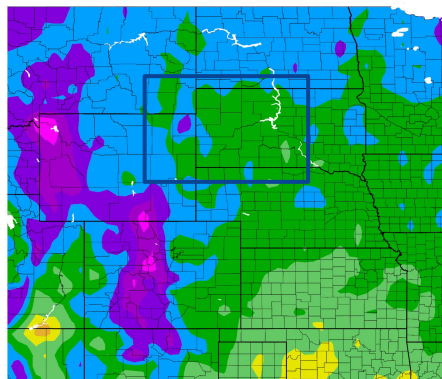


# Temperature: Last 30 Days

Link to the [High Plains Regional Climate Center](#).

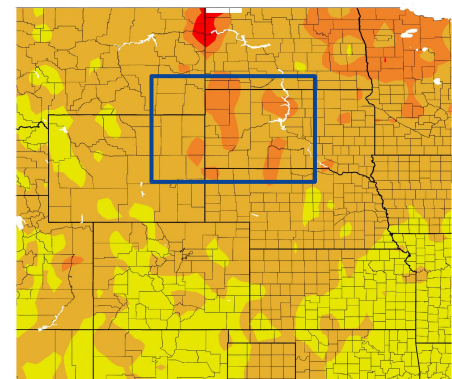
- Above average temperatures were reported across all of northeastern Wyoming and western South Dakota.

Temperature (F)  
9/7/2024 - 10/6/2024



Generated 10/7/2024 at HPRCC using provisional data.

Departure from Normal Temperature (F)  
9/7/2024 - 10/6/2024



NOAA Regional Climate Centers Generated 10/7/2024 at HPRCC using provisional data.

NOAA Regional Climate Centers





# Summary of Impacts

Links: See/submit [Condition Monitoring Observer Reports \(CMOR\)](#) and view the [Drought Impacts Reporter](#)

## Hydrologic Impacts

- Most streams and rivers are much below normal to near normal for this time of the year. Additional information from the USGS may be found [here](#).

## Agricultural Impacts

- USDA Crop Progress and Condition reports: [South Dakota](#) and [Wyoming](#).

## Fire Hazard Impacts

- [Black Hills National Forest Enters Stage II Fire Restrictions](#).
- Please visit [Great Plains Fire Information](#) for the latest fire restrictions.

## Other Impacts

- Current 100- and 1000-hr fuels are very dry and herbaceous fuels continue to cure.

## Mitigation Actions

- “None reported”



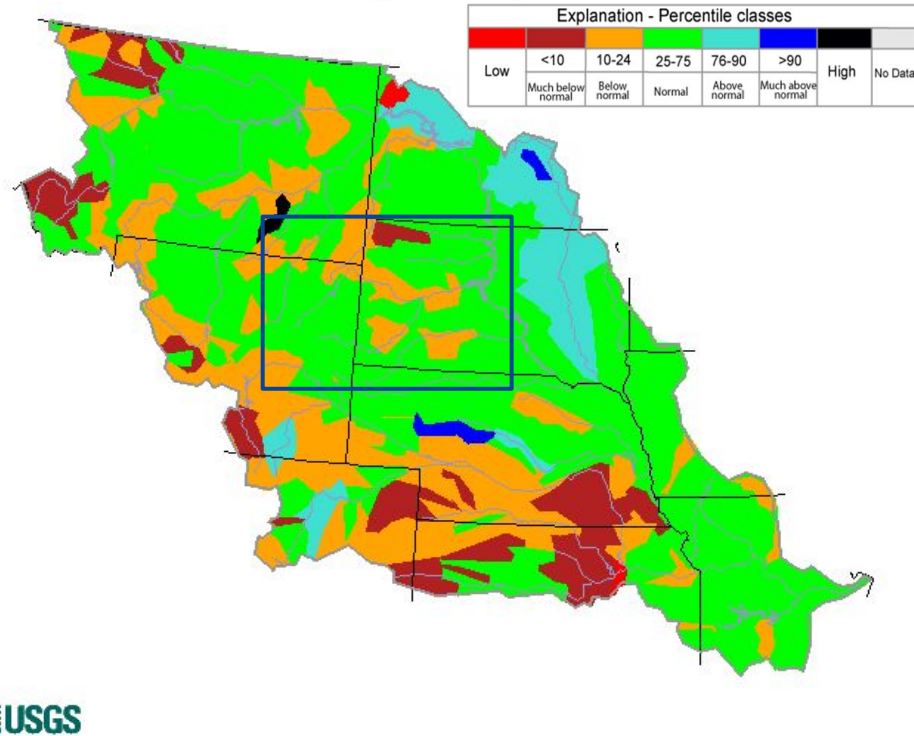


# Hydrologic Conditions and Impacts

- USGS 7-day average streamflow HUC map compared to historical streamflow for the day of the year.

River Basin	7-day Average Streamflow
Powder	Below Normal to Normal
Little Missouri	Below Normal
Belle Fourche	Below Normal
Grand	Much Below Normal
Moreau	Normal
Cheyenne	Below Normal to Normal
White	Below Normal to Normal
Keyapaha	Normal

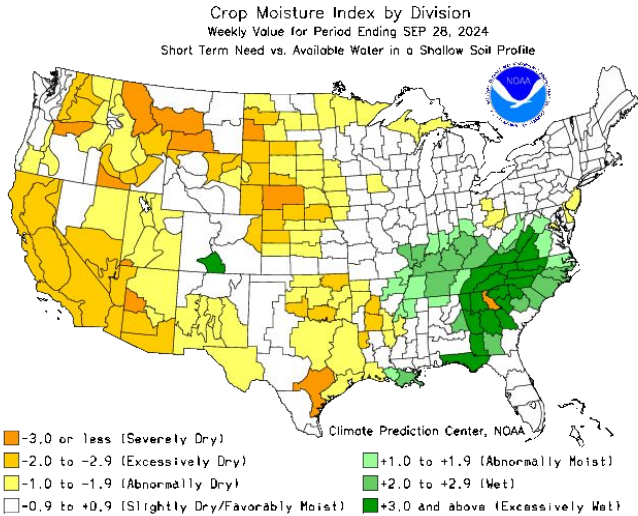
Sunday, October 06, 2024



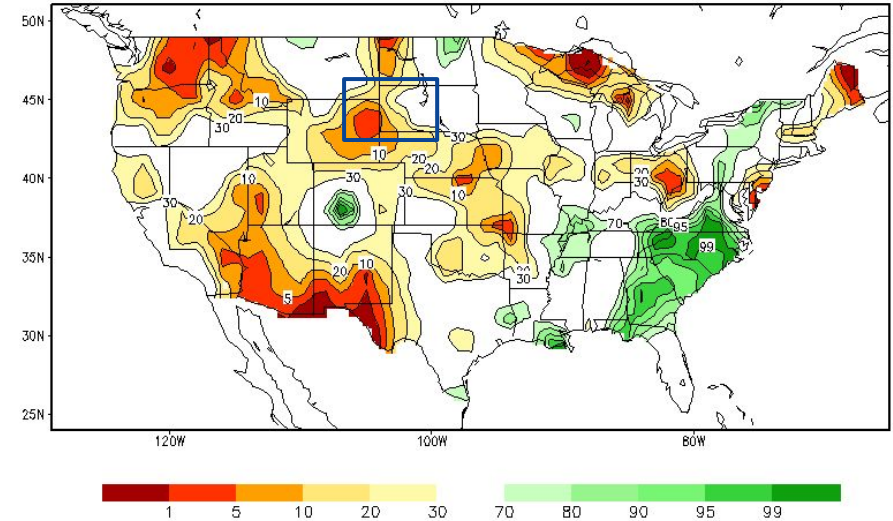


# Agricultural Impacts

- USDA Crop Progress and Conditions Reports for [South Dakota](#) and [Wyoming](#).



Calculated Soil Moisture Ranking Percentile  
OCT 04, 2024





# Fire Hazard Impacts

Link to [Wildfire Potential Outlooks from the National Interagency Coordination Center](#).

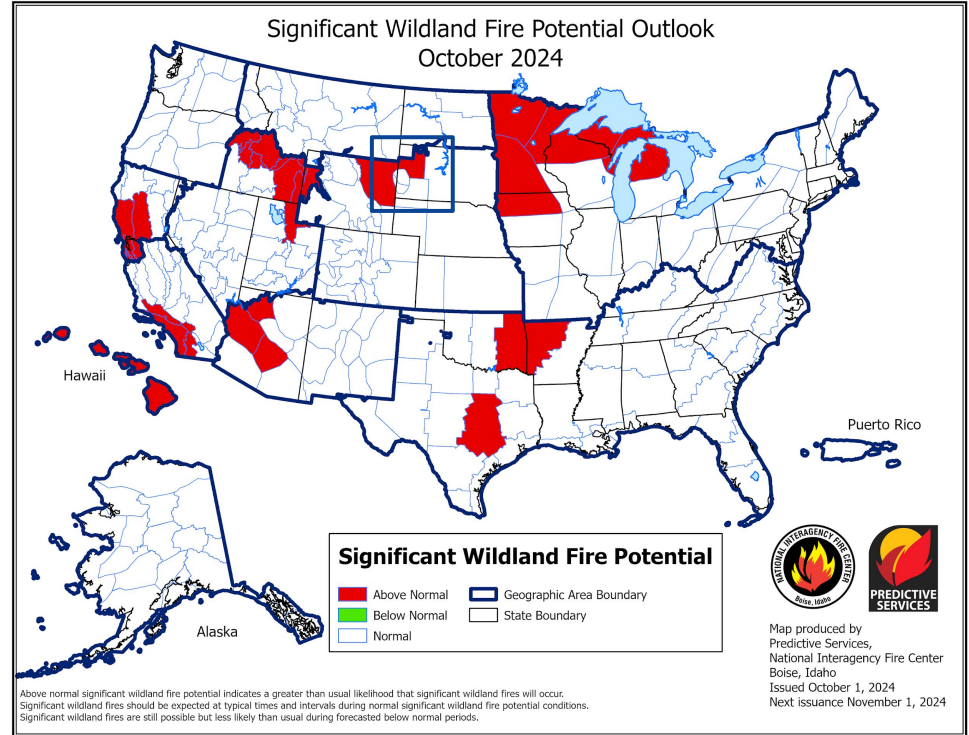
- The significant wildland fire potential outlook for October is above normal to normal for October.

[Great Plains Fire Information](#)

[Fire Information for Resource Management System](#)

[Hazard Mapping System Fire and Smoke Product](#)

[South Dakota Grassland Fire Danger Map](#)







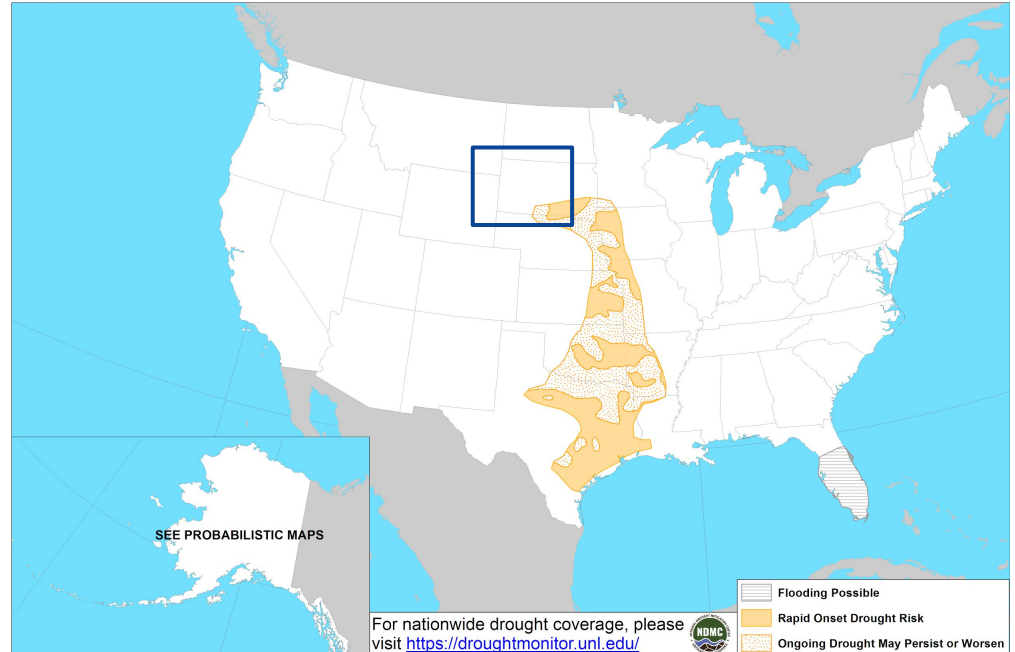
# Rapid Onset Drought Outlook

Links to the latest Climate Prediction Center 8 to 14 day [Temperature Outlook](#) and [Precipitation Outlook](#).

- The 8 to 14 day U.S. Hazards Outlook valid from October 12 through 18 indicates a rapid onset drought risk is present for south central South Dakota.



Day 8-14 U.S. Hazards Outlook  
Valid: 10/12/2024-10/18/2024



Climate Prediction Center  
Made: 10/04/2024 3PM EDT

Follow us:   
[www.cpc.ncep.noaa.gov](http://www.cpc.ncep.noaa.gov)





# Long-Range Outlooks

The latest monthly and seasonal outlooks can be found on the [CPC homepage](#)

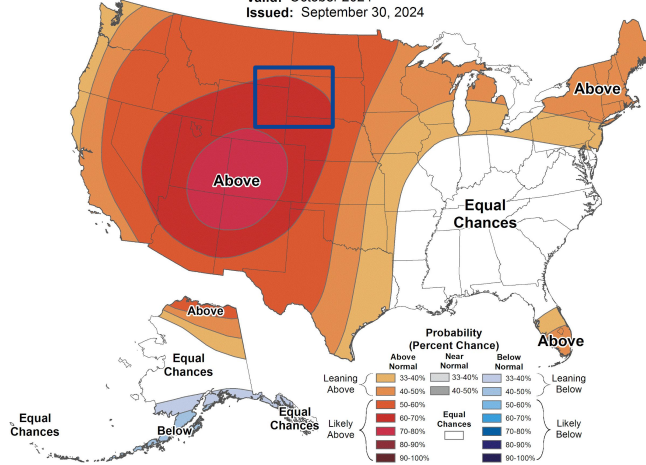
- There is a greater chance for above average temperatures to continue in October.
- Odds favor below average precipitation for all of October.



## Monthly Temperature Outlook



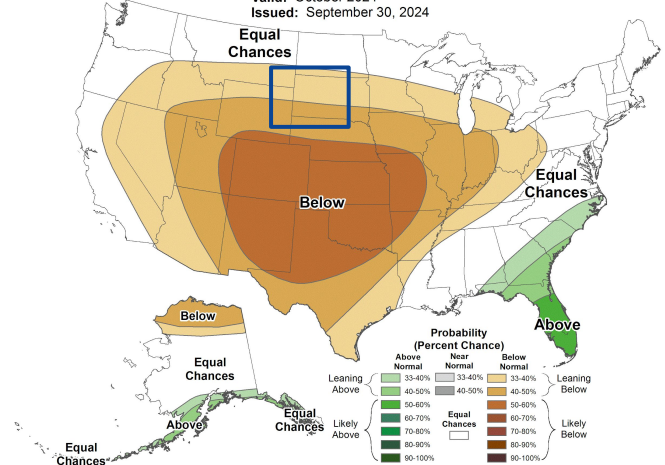
Valid: October 2024  
Issued: September 30, 2024



## Monthly Precipitation Outlook



Valid: October 2024  
Issued: September 30, 2024





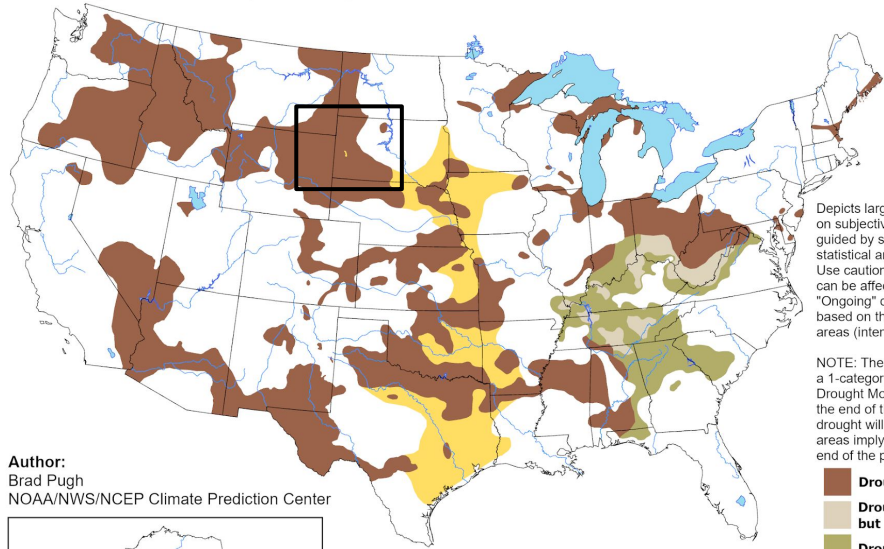
# Drought Outlook

The latest monthly and seasonal outlooks can be found on the [CPC homepage](#)

- Drought conditions are expected to persist over northeastern Wyoming and western South Dakota.
- 
- Drought conditions will likely develop over south central South Dakota.

## U.S. Monthly Drought Outlook Drought Tendency During the Valid Period

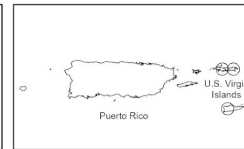
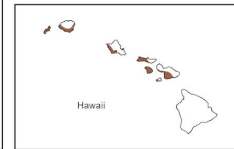
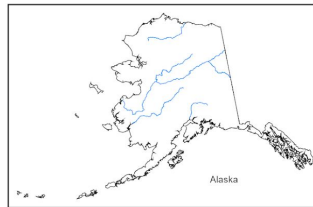
Valid for October 2024  
Released September 30, 2024



Depicts large-scale trends based on subjectively derived probabilities guided by short- and long-range statistical and dynamical forecasts. Use caution for applications that can be affected by short lived events. "Ongoing" drought areas are based on the U.S. Drought Monitor areas (intensities of D1 to D4).

NOTE: The tan areas imply at least a 1-category improvement in the Drought Monitor intensity levels by the end of the period, although drought will remain. The green areas imply drought removal by the end of the period (D0 or none).

Author:  
Brad Pugh  
NOAA/NWS/NCEP Climate Prediction Center



- Drought persists
- Drought remains, but improves
- Drought removal likely
- Drought development likely
- No drought

Links to the latest:

- [Climate Prediction Center Monthly Drought Outlook](#)
- [Climate Prediction Center Seasonal Drought Outlook](#)

<https://go.usa.gov/3eZGd>

