

Drought Information Statement for Northeastern Wyoming and Western South Dakota

Valid August 29, 2024

Issued By: National Weather Service Rapid City, SD

Contact Information: nws.rapidcity@noaa.gov

- This product will be updated September 27, 2024 or sooner if drought conditions change significantly.
 - Please see all currently available products at <https://drought.gov/drought-information-statements>.
 - Please visit <https://www.weather.gov/unr/DroughtInformationStatement> for previous statements.
 - Please visit <https://www.drought.gov/drought-status-updates> for regional drought status updates.
-
- Extreme (D3) Drought expanded across northeastern Wyoming, the Black Hills, and far northwestern South Dakota
 - Extreme (D3) Drought to Abnormally Dry Conditions extend across all of northeastern Wyoming and most of western South Dakota.



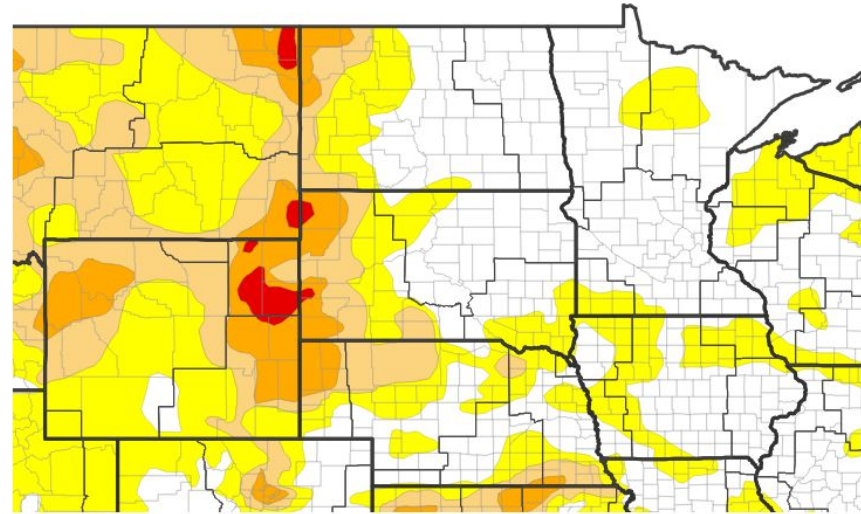


U.S. Drought Monitor

Link to the [latest U.S. Drought Monitor](#) for northeastern Wyoming and western South Dakota

- Drought intensity and Extent
 - **D4 (Exceptional Drought):** None occurring.
 - **D3 (Extreme Drought):** Portions of Weston, Campbell, far western Pennington, and Harding Counties.
 - **D2 (Severe Drought):** Portions of counties along the Wyoming/South Dakota border and South Dakota/Montana border.
 - **D1 (Moderate Drought):** Portions of Perkins, Butte, Meade, Pennington, Lawrence, Custer, & Oglala Lakota, Jackson, Mellette, and Todd Counties in South Dakota and Crook County Wyoming.
 - **D0: (Abnormally Dry):** The rest of western South Dakota.

U.S. Drought Monitor



U.S. Drought Monitor



Source(s): NDMC, NOAA, USDA; image courtesy of Drought.gov

Data Valid: 08/27/24

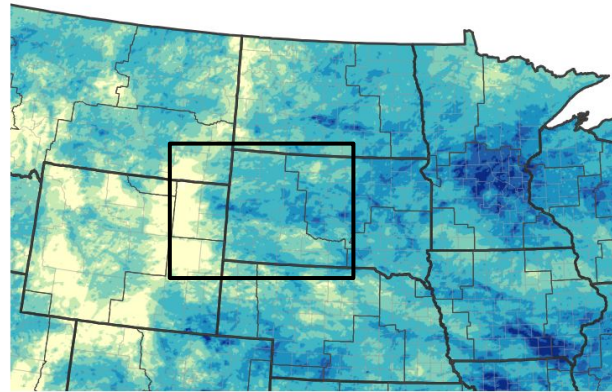




Precipitation: Last 30 Days

- Much of the area had below normal precipitation over the past 30 days.
- Portions of northeastern Wyoming were significantly below average over the past 30 days.
- The lack of precipitation over the past 30 days has begun to impact portions of south-central South Dakota as seen on the 30-Day Percent of Normal Precipitation graphic to the right.

30-Day Precipitation Accumulations (Inches)

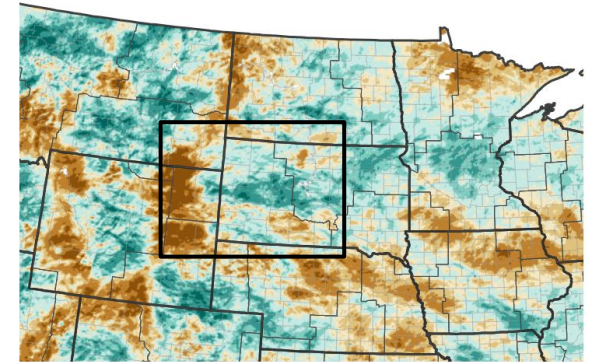


Inches of Precipitation



Source(s): National Weather Service Multi-Radar Multi-Sensor System; image courtesy of Drought.gov Last Updated: 08/29/24

30-Day Percent of Normal Precipitation



Percent of Normal Precipitation (%)



Source(s): National Weather Service Multi-Radar Multi-Sensor System; image courtesy of Drought.gov Last Updated: 08/29/24





Summary of Impacts

Links: See/submit [Condition Monitoring Observer Reports \(CMOR\)](#) and view the [Drought Impacts Reporter](#)

Hydrologic Impacts

- Most streams and rivers are below normal to normal for this time of the year. Additional information from the USGS may be found [here](#).

Agricultural Impacts

- USDA Crop Progress and Condition reports: [South Dakota](#) and [Wyoming](#).

Fire Hazard Impacts

- Please visit [Great Plains Fire Information](#) for the latest fire restrictions.

Other Impacts

- Current 100- and 1000-hr fuels are very dry and herbaceous fuels continue to dry down and cure. Even with ample precipitation the warm-season grasses will struggle to come back.

Mitigation Actions

- Rapid City's annual mandatory water conservation measure continues through August 31.
- Gillette's water waste ordinance continues through October 1.

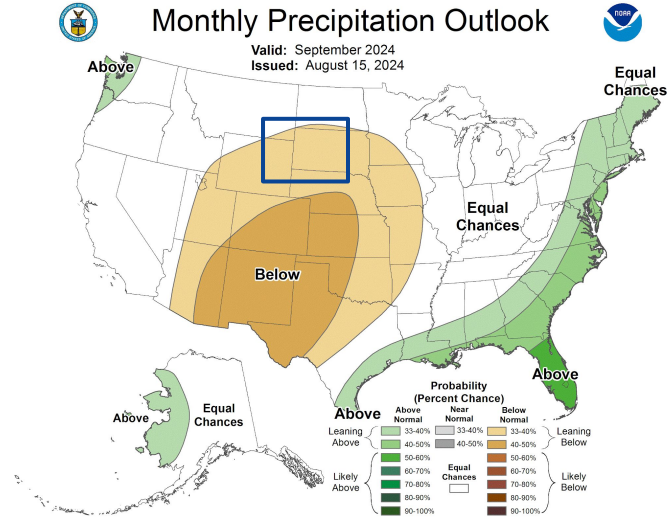
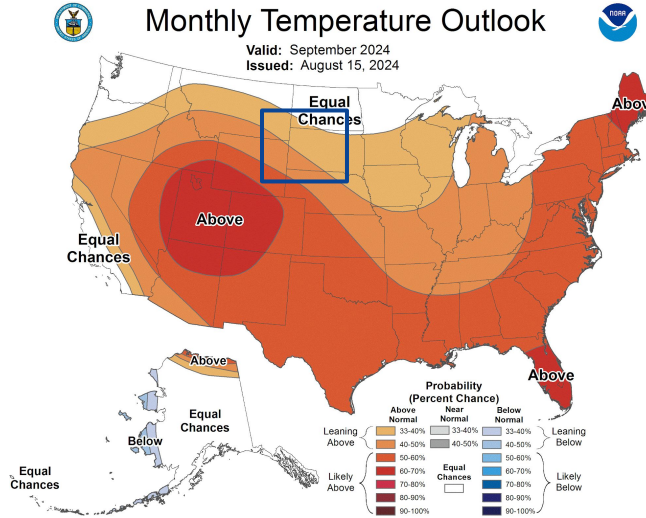




Long-Range Outlooks

The latest monthly and seasonal outlooks can be found on the [CPC homepage](#)

- Temperatures for September are expected to lean toward above average, with much of the area having a 33% to 50% chance of warmer-than-normal temperatures.
- Odds favor below average precipitation for September with a 33% to 40% chance of below-normal precipitation.



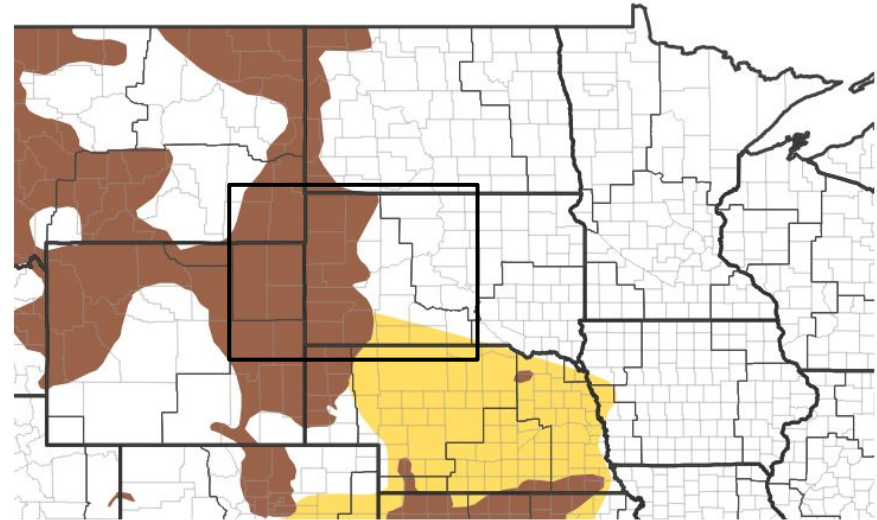


Drought Outlook

The latest monthly and seasonal outlooks can be found on the [CPC homepage](#)

- Drought conditions are expected to further develop or persist over all of northeastern Wyoming and portions of western South Dakota.

Seasonal (3-Month) Drought Outlook for August 15, 2024–November 30, 2024



Drought Is Predicted To...



Source(s): Climate Prediction Center; image courtesy of Drought.gov

Last Updated: 08/15/24

Links to the latest:

[Climate Prediction Center Monthly Drought Outlook](#)

[Climate Prediction Center Seasonal Drought Outlook](#)



National Oceanic and
Atmospheric Administration

U.S. Department of Commerce

National Weather Service
Rapid City, SD