



# Drought Information Statement for Northeastern Wyoming and Western South Dakota

## Valid August 16, 2024

Issued By: National Weather Service Rapid City, SD

Contact Information: [nws.rapidcity@noaa.gov](mailto:nws.rapidcity@noaa.gov)

- This product will be updated September 27, 2024 or sooner if drought conditions change significantly.
  - Please see all currently available products at <https://drought.gov/drought-information-statements>.
  - Please visit <https://www.weather.gov/unr/DroughtInformationStatement> for previous statements.
  - Please visit <https://www.drought.gov/drought-status-updates> for regional drought status updates.
- 
- Severe (D2) to Abnormally Dry Conditions extend across all of northeastern Wyoming and most of western South Dakota.
  - Hot temperatures continue to exacerbate drought conditions.



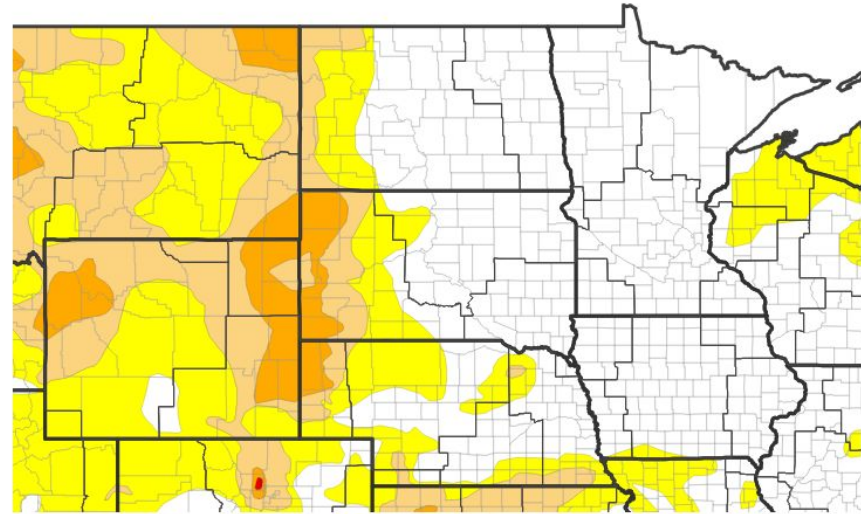


# U.S. Drought Monitor

Link to the [latest U.S. Drought Monitor](#) for northeastern Wyoming and western South Dakota

- Drought intensity and Extent
  - **D4 (Exceptional Drought):** None occurring.
  - **D3 (Extreme Drought):** None occurring.
  - **D2 (Severe Drought):** Portions of counties along the Wyoming/South Dakota border and South Dakota/Montana border.
  - **D1 (Moderate Drought):**
    - Northeast Wyoming: Portions of Campbell, Crook & Weston Counties.
    - South Dakota: Portions of Perkins, Butte, Meade, Pennington, Lawrence, Custer, Jackson, Oglala Lakota.
  - **D0: (Abnormally Dry):** the rest of western South Dakota.

U.S. Drought Monitor



U.S. Drought Monitor



Source(s): NDMC, NOAA, USDA; image courtesy of Drought.gov

Data Valid: 08/13/24





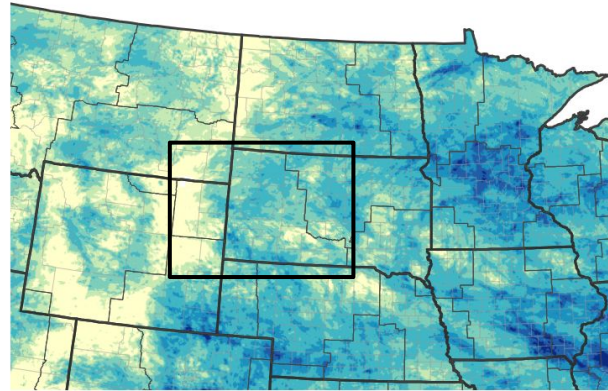
# Precipitation: Last 30 Days

Much of the area had below normal precipitation over the past 30 days.

Portions of northeastern Wyoming were significantly below average over the past 30 days.

The lack of precipitation over the past 30 days has begun to impact portions of south-central South Dakota as seen on the 30-Day Percent of Normal Precipitation graphic to the right.

30-Day Precipitation Accumulations (Inches)

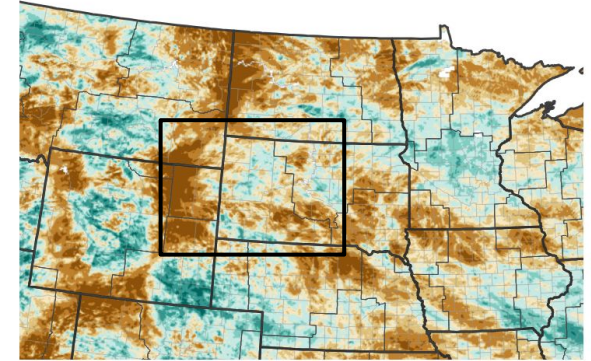


Inches of Precipitation

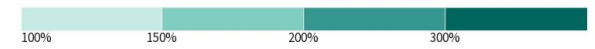
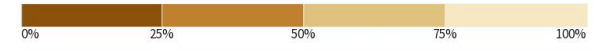


Source(s): National Weather Service Multi-Radar Multi-Sensor System; image courtesy of Drought.gov Last Updated: 08/15/24

30-Day Percent of Normal Precipitation



Percent of Normal Precipitation (%)



Source(s): National Weather Service Multi-Radar Multi-Sensor System; image courtesy of Drought.gov Last Updated: 08/15/24





# Summary of Impacts

Links: See/submit [Condition Monitoring Observer Reports \(CMOR\)](#) and view the [Drought Impacts Reporter](#)

## Hydrologic Impacts

- Most streams and rivers are below normal to normal for this time of the year. Additional information from the USGS may be found [here](#).

## Agricultural Impacts

- USDA Crop Progress and Condition reports: [South Dakota](#) and [Wyoming](#).

## Fire Hazard Impacts

- Please visit [Great Plains Fire Information](#) for the latest fire restrictions.

## Other Impacts

- Current 100- and 1000-hr fuels are very dry and herbaceous fuels continue to dry down and cure. Even with ample precipitation the warm-season grasses will struggle to come back.

## Mitigation Actions

- Rapid City's annual mandatory water conservation measure continues through August 31.
- Gillette's water waste ordinance continues through October 1.

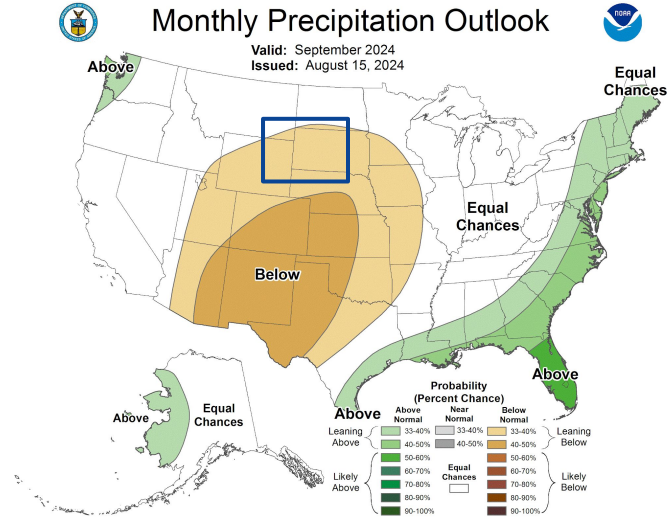
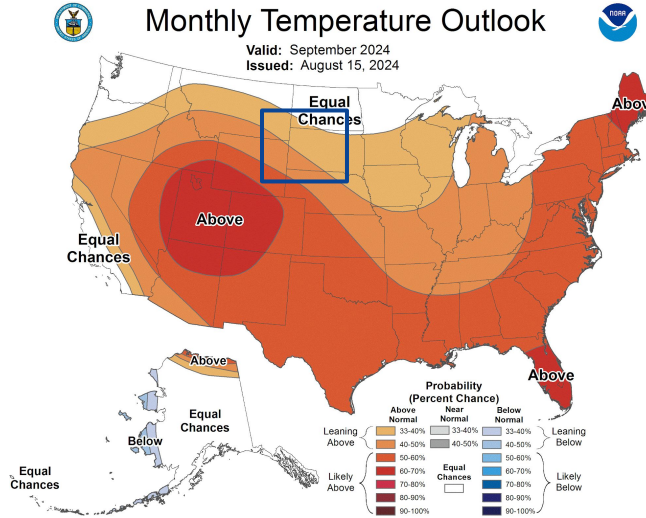




# Long-Range Outlooks

The latest monthly and seasonal outlooks can be found on the [CPC homepage](#)

- Temperatures for September are expected to lean toward above average, with much of the area having a 33% to 50% chance of warmer-than-normal temperatures.
- Odds favor below average precipitation for September with a 33% to 40% chance of below-normal precipitation.



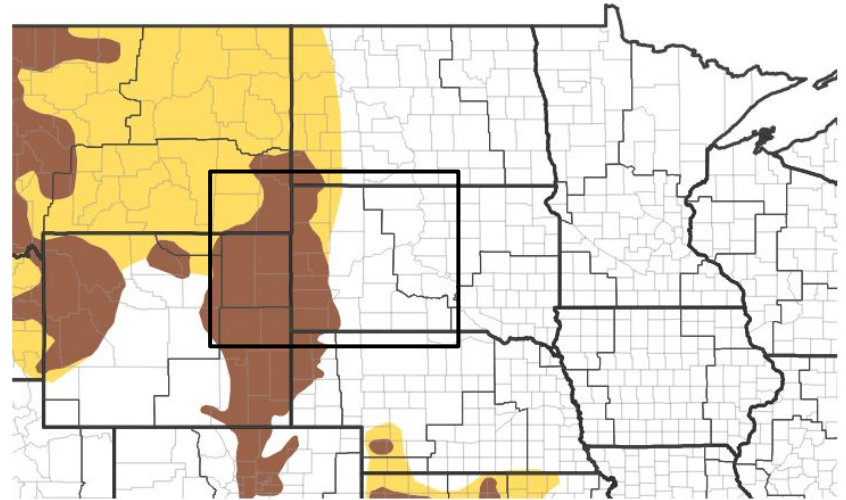


# Drought Outlook

The latest monthly and seasonal outlooks can be found on the [CPC homepage](#)

- Drought conditions are expected to further develop or persist over all of northeastern Wyoming and much of western South Dakota.

## 1-Month Drought Outlook



### Drought Is Predicted To...



Source(s): Climate Prediction Center; image courtesy of Drought.gov

Last Updated: 07/31/24

Links to the latest:

[Climate Prediction Center Monthly Drought Outlook](#)

[Climate Prediction Center Seasonal Drought Outlook](#)



National Oceanic and  
Atmospheric Administration

U.S. Department of Commerce

National Weather Service  
Rapid City, SD