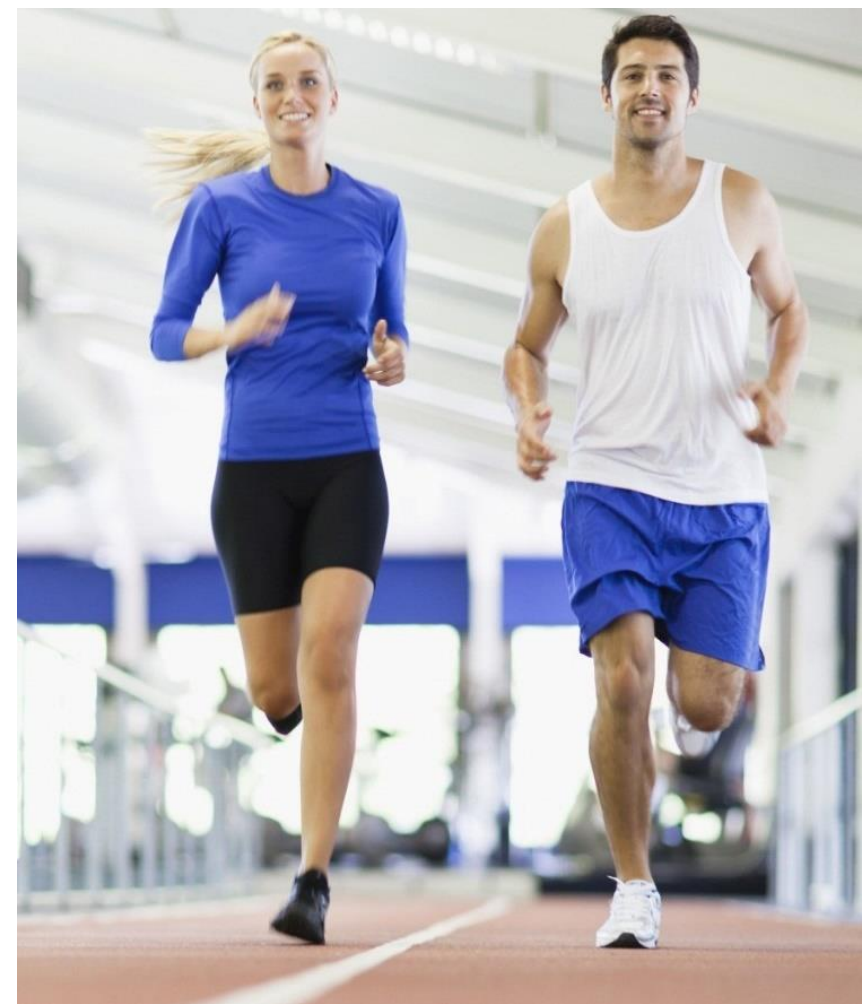




weather.gov/tampa/workouts



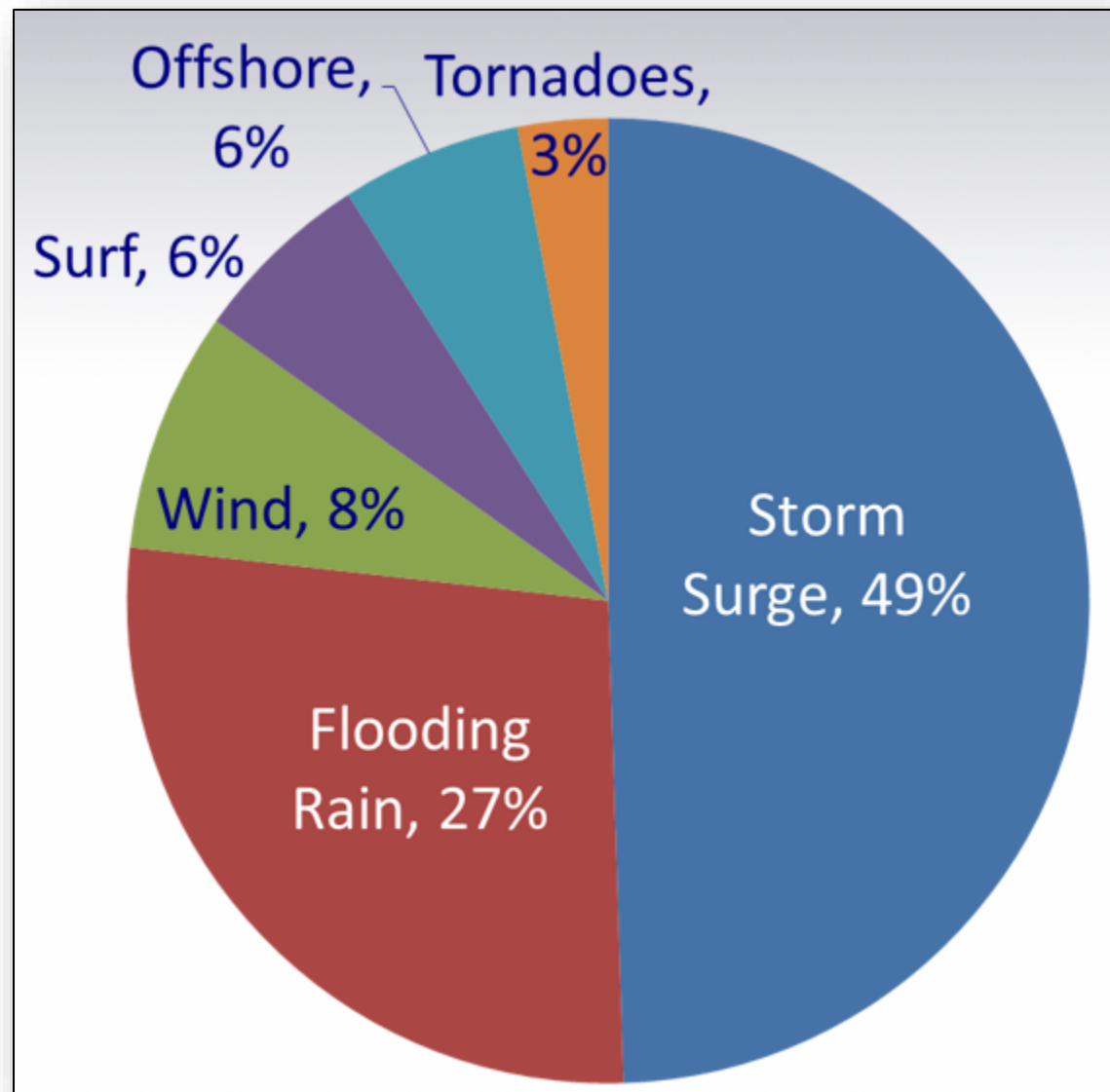
Weather Workout – Storm Surge, River Forecasting

NWS TAMPA BAY (RUSKIN, FL)

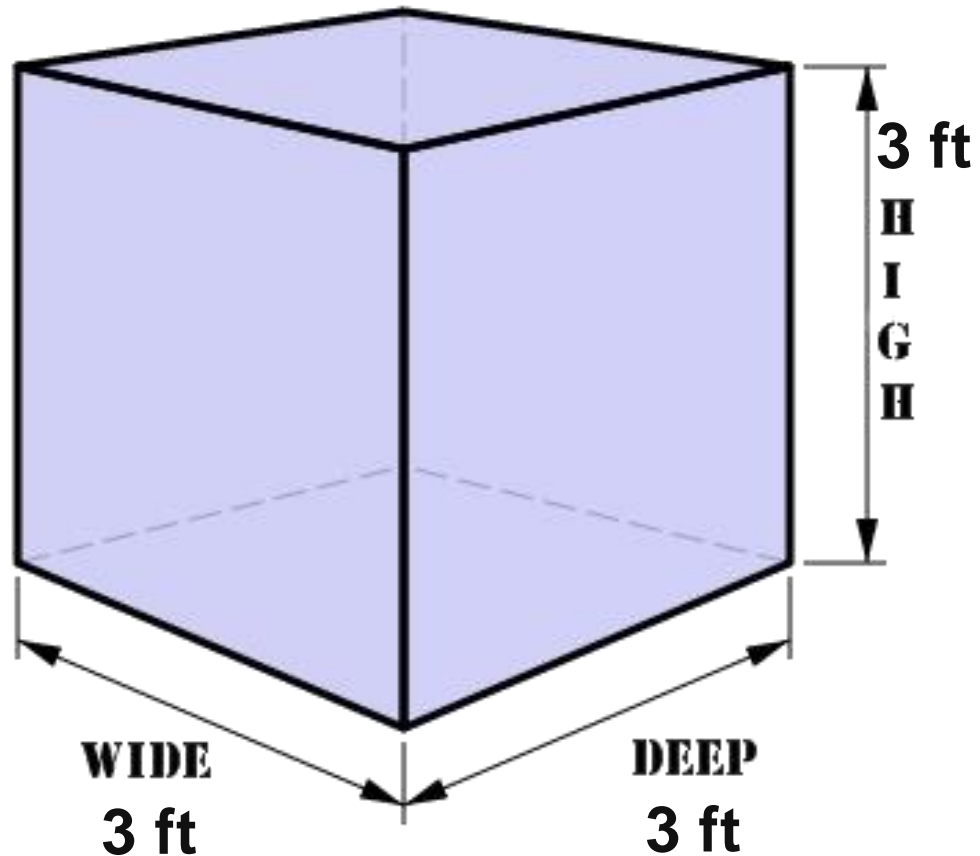
FEBRUARY 23, 2021

[HTTPS://WEATHER.GOV/TAMPA/WORKOUTS](https://weather.gov/tampa/workouts)

U.S. Hurricane Fatalities from 1963-2015

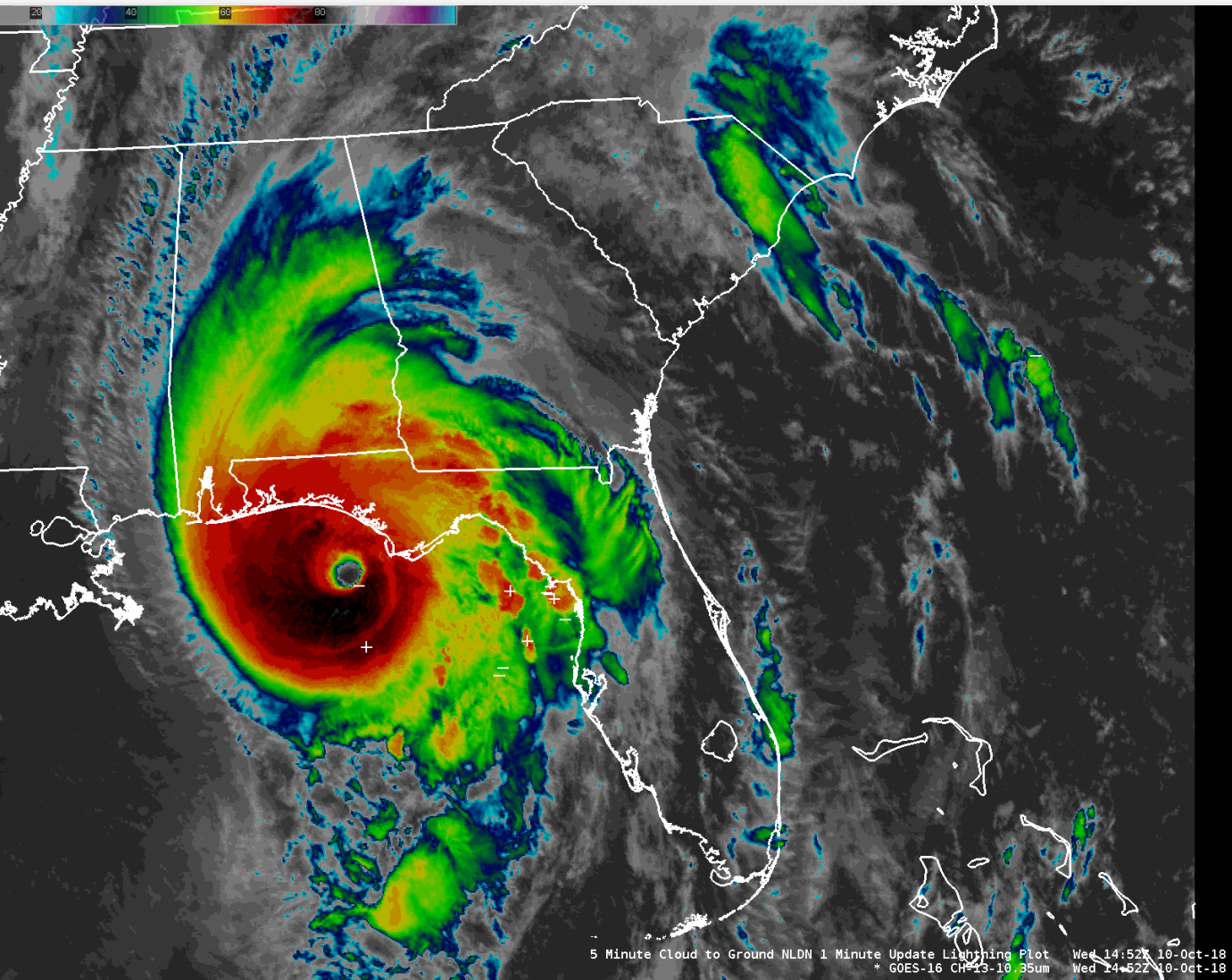


Water is Heavy, Moving Water can be Deadly



1 cubic yard of
water weighs
1,700 pounds!

2018 Major Hurricane Michael



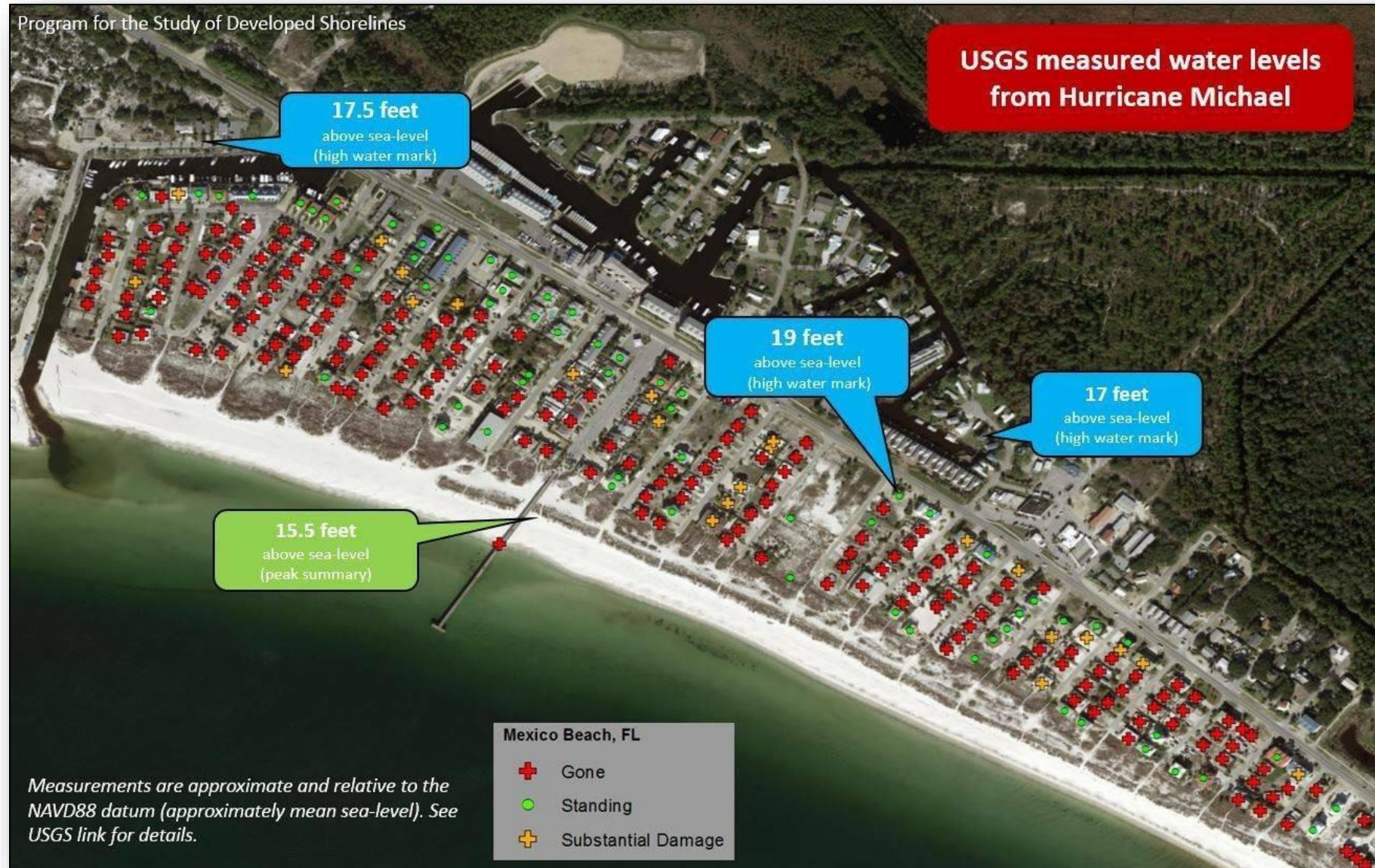
- CAT 5 with 160 mph wind
- Surge, tide, and waves reached 19 feet at Mexico Beach
- At least 59 people killed in the United States
- 4th CAT 5 to hit the United States

Storm Surge Mexico Beach, FL on 10/10/2018



[Instagram.com/talarico.tessa](https://www.instagram.com/talarico.tessa)

Every Red Dot on Map is a Home Washed Off Foundation



On the Ground in Mexico Beach



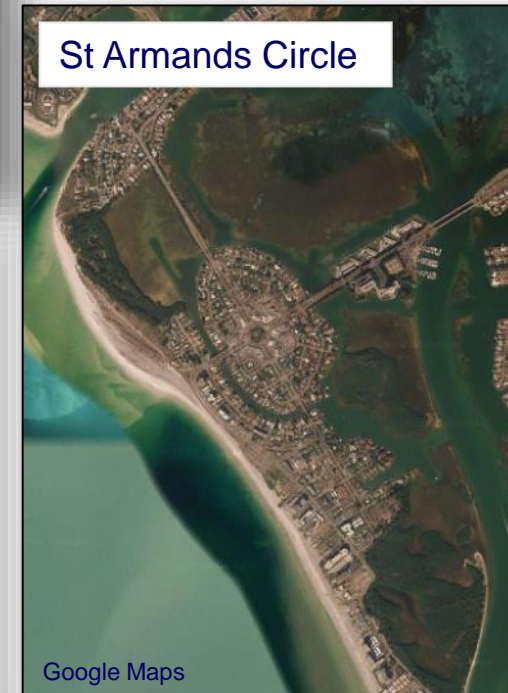
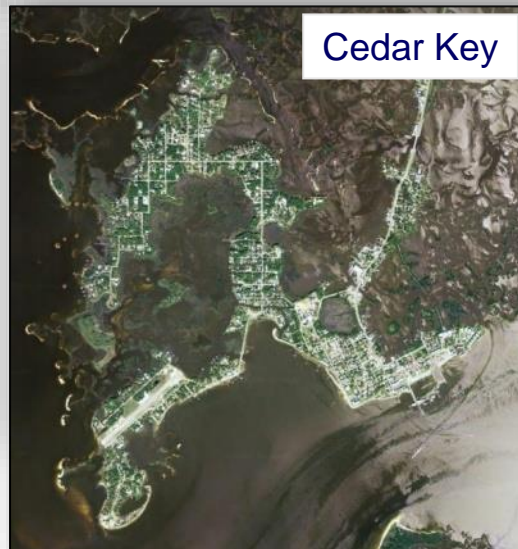
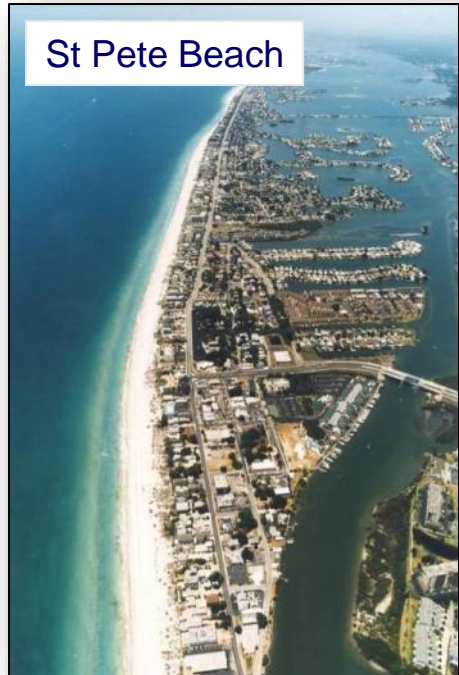
Mexico Beach Storm Surge Debris



Chris Evans
Citrus County Emergency Management

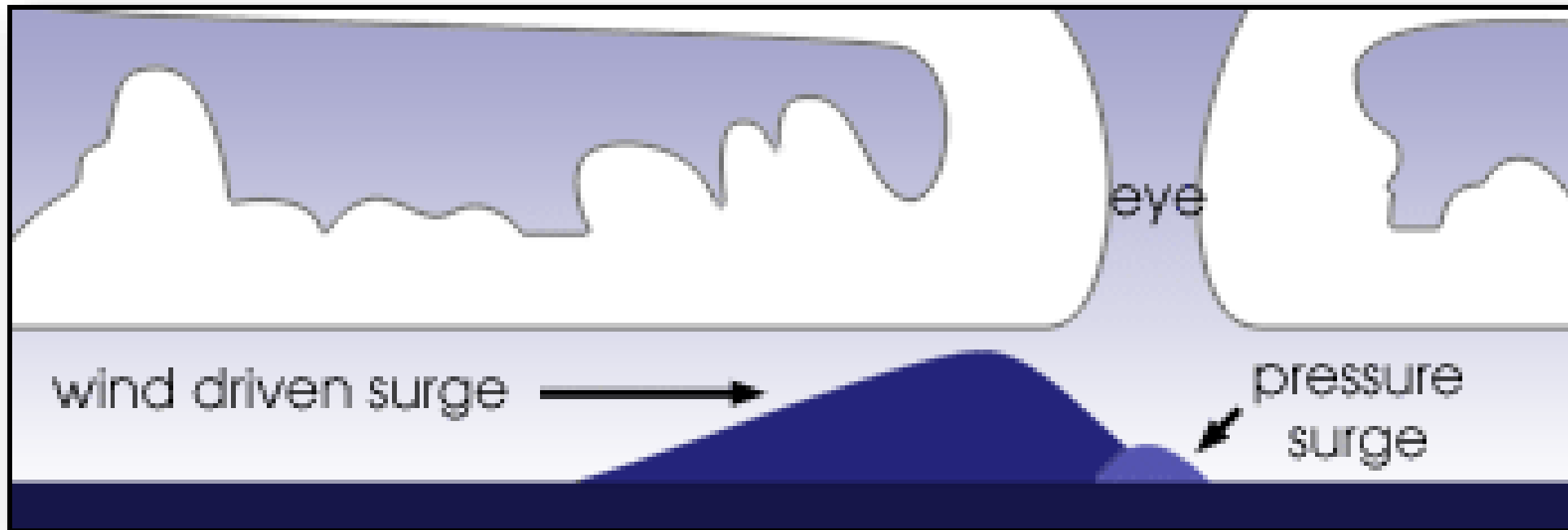
Our Barrier Islands are no Different

Our chance of a storm surge over 15 feet is about 0.5% each year



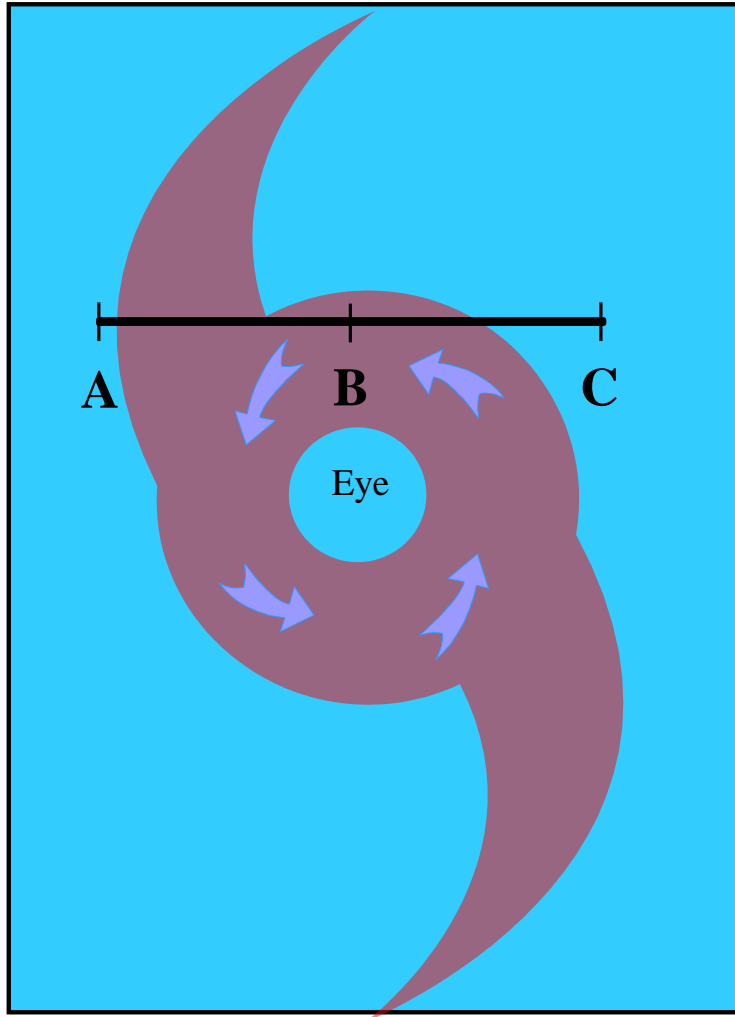
Storm Surge

- Lower central pressure associated with the storm causes the ocean to rise/bulge up
- However, the contribution of pressure to total storm surge is small compared to wind

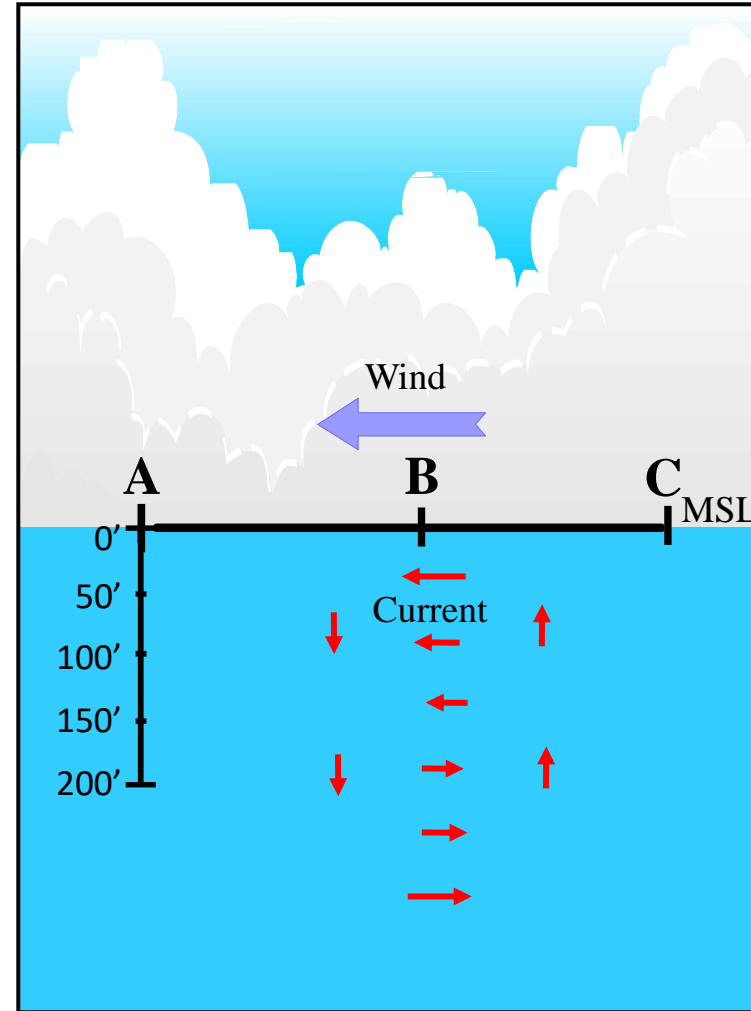


Currents in Deep Water

a. Top View of Sea Surface

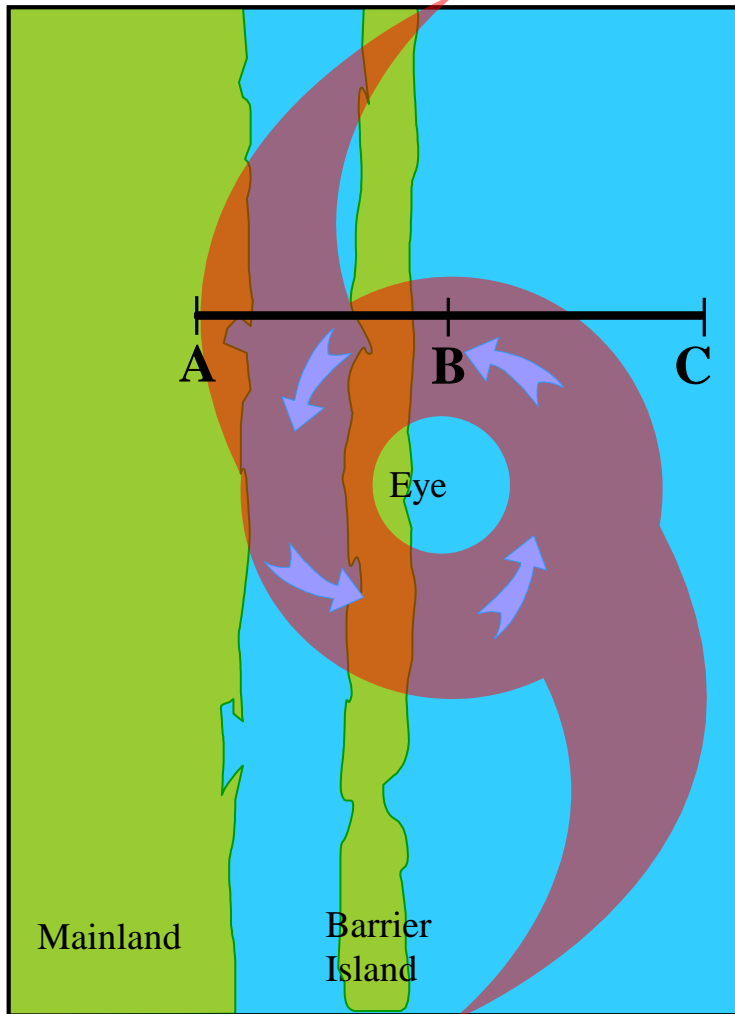


b. Side View of Cross Section "ABC"

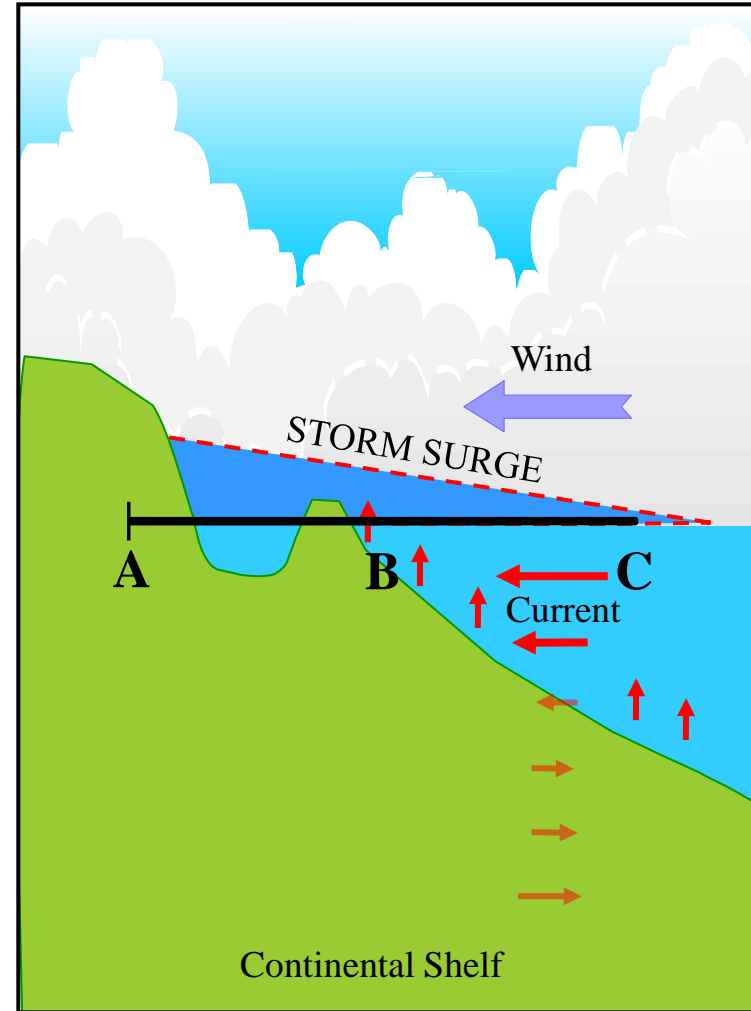


Currents in Shallow Water

a. Top View of Sea Surface



b. Side View of Cross Section "ABC"



Storm Surge Generalizations

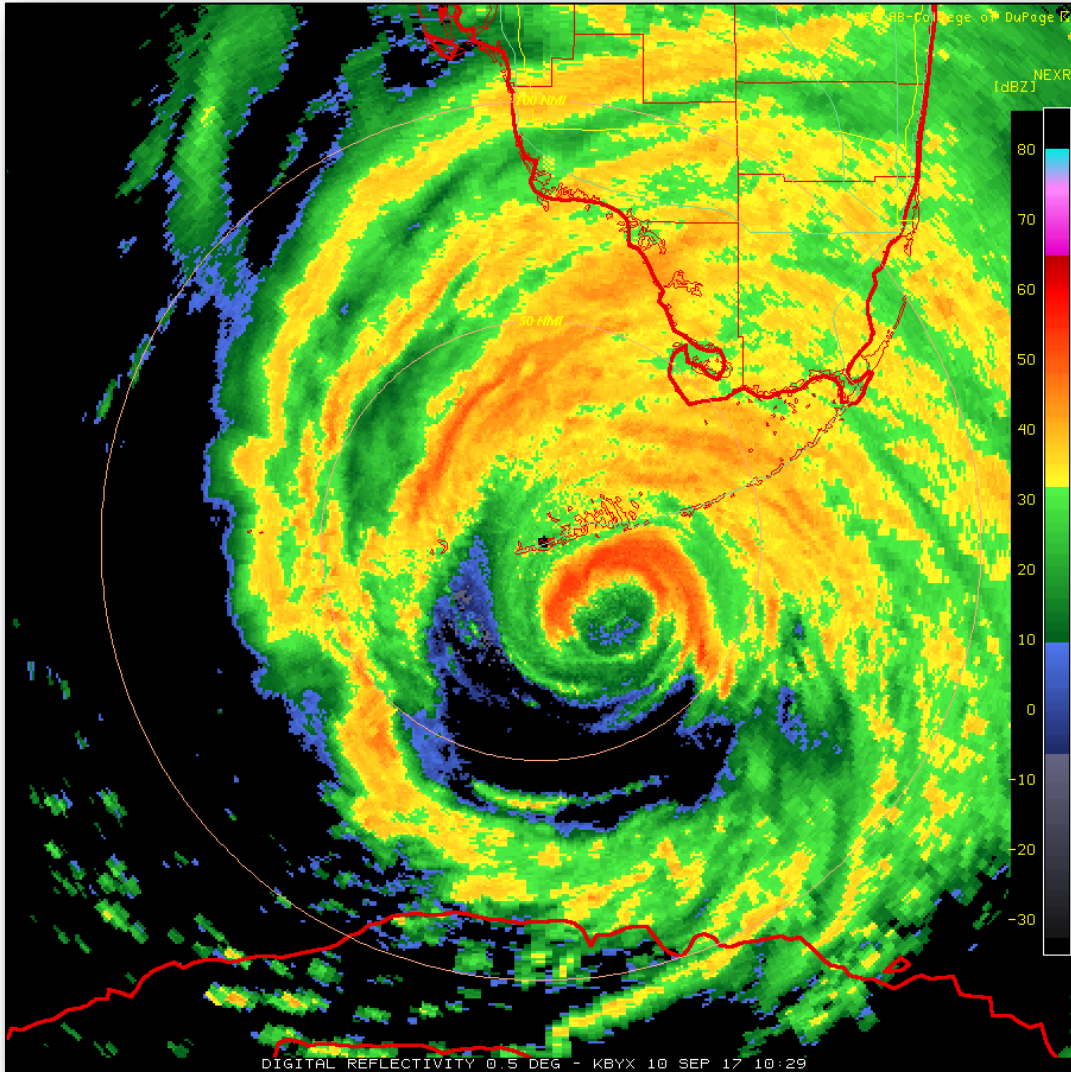


Carter White

Bay Shore Blvd in Tampa as 1985 Hurricane Elena stalled 100 miles to the northwest

- More intense storms cause higher surges
- Highest surges usually occur to the right of the storm track
 - Wind is blowing surge onshore
- Storm Speed
 - Fast - higher surges along the open coast
 - Slow - greater flooding inside bays and estuaries

Storm Surge Generalizations



- Larger storms affect longer stretches of coastline
- Direction of storm approach often impacts the extent of flooding
- Slope of the continental slope affects surge and waves
 - Shallow slopes (West Florida) allow greater storm surge with small waves
 - Steeper slopes (Miami area) allow a bit lower surge but larger breaking waves can occur

2017 Hurricane Irma Storm Surge – Large Wind Field



Surge was 5-8 feet AGL in the Florida Keys

Highest surge was 6-10 feet AGL southeast of Naples. Surge was 3-5 ft AGL Naples to Fort Myers

Surge 4-6 ft AGL in parts of Miami-Dade County

Surge 3-5 ft AGL from Cape Canaveral through Jacksonville

2020 Tropical Cyclone Eta – 4 to 5 ft AGL



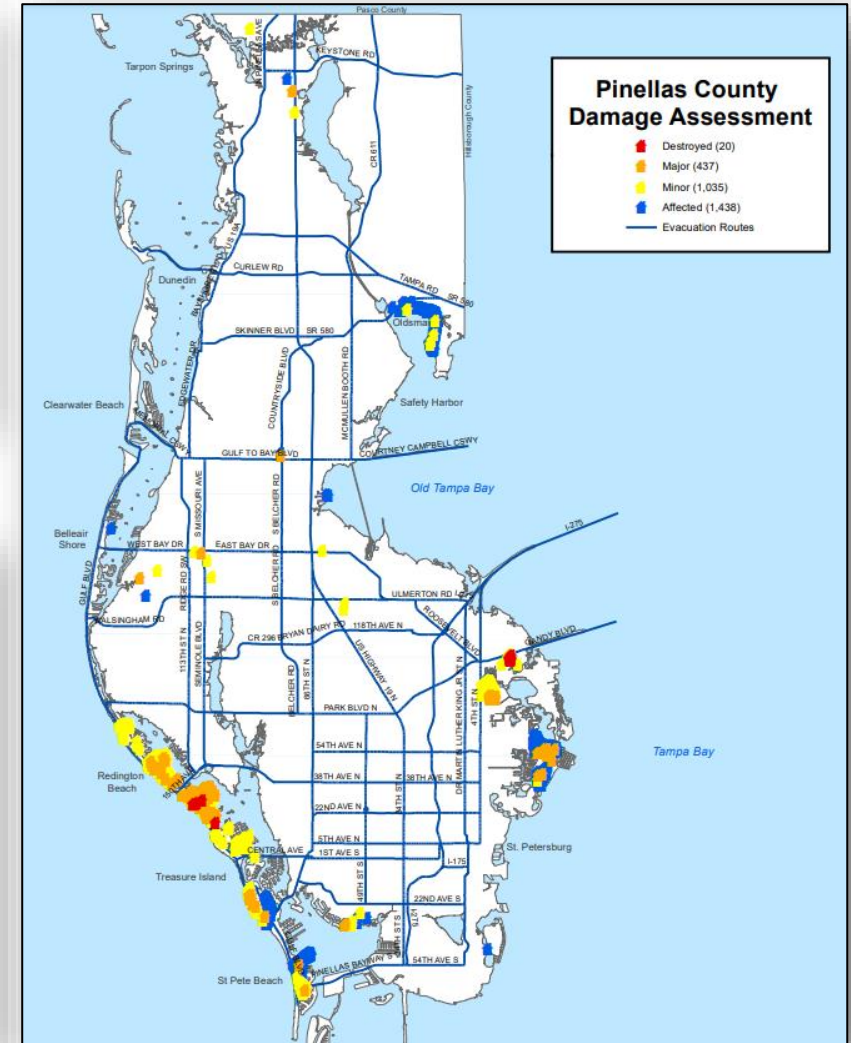
Fort Myers



Courtney Campbell Causeway

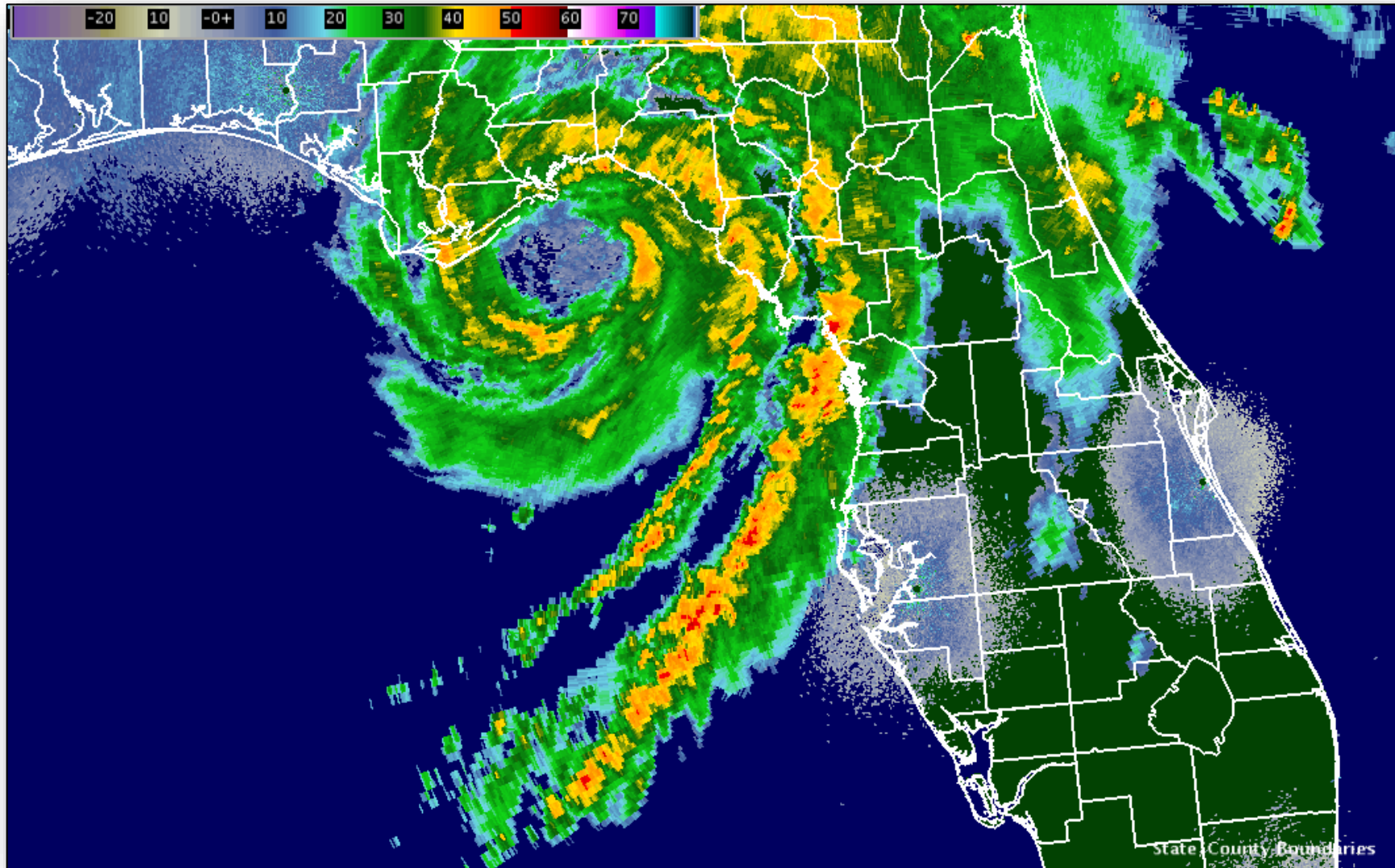


Safety Harbor



Pinellas County Surge Flooding

2016 Hurricane Hermine Radar Loop



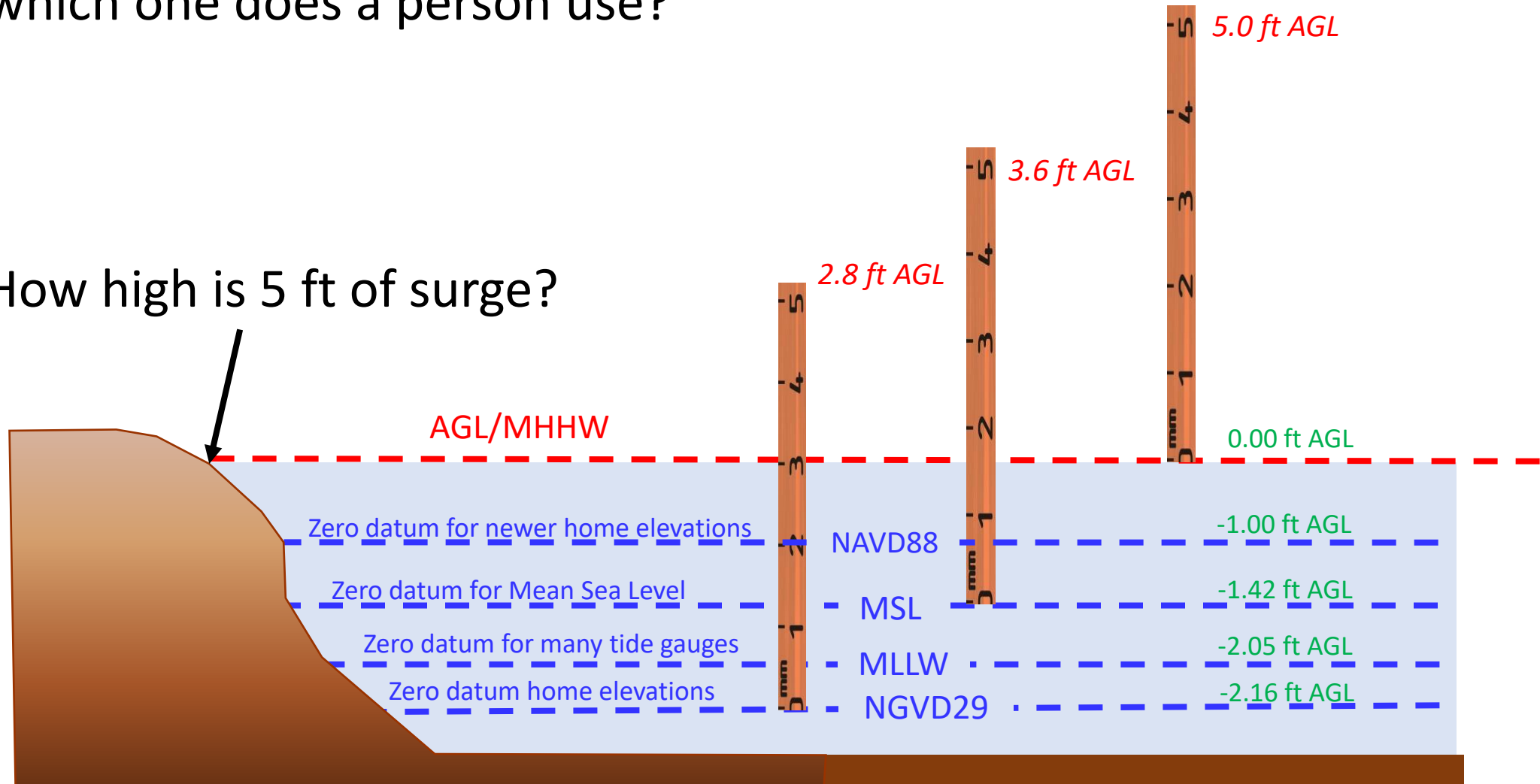
Cedar Key 6 foot AGL Surge (above MHHW)



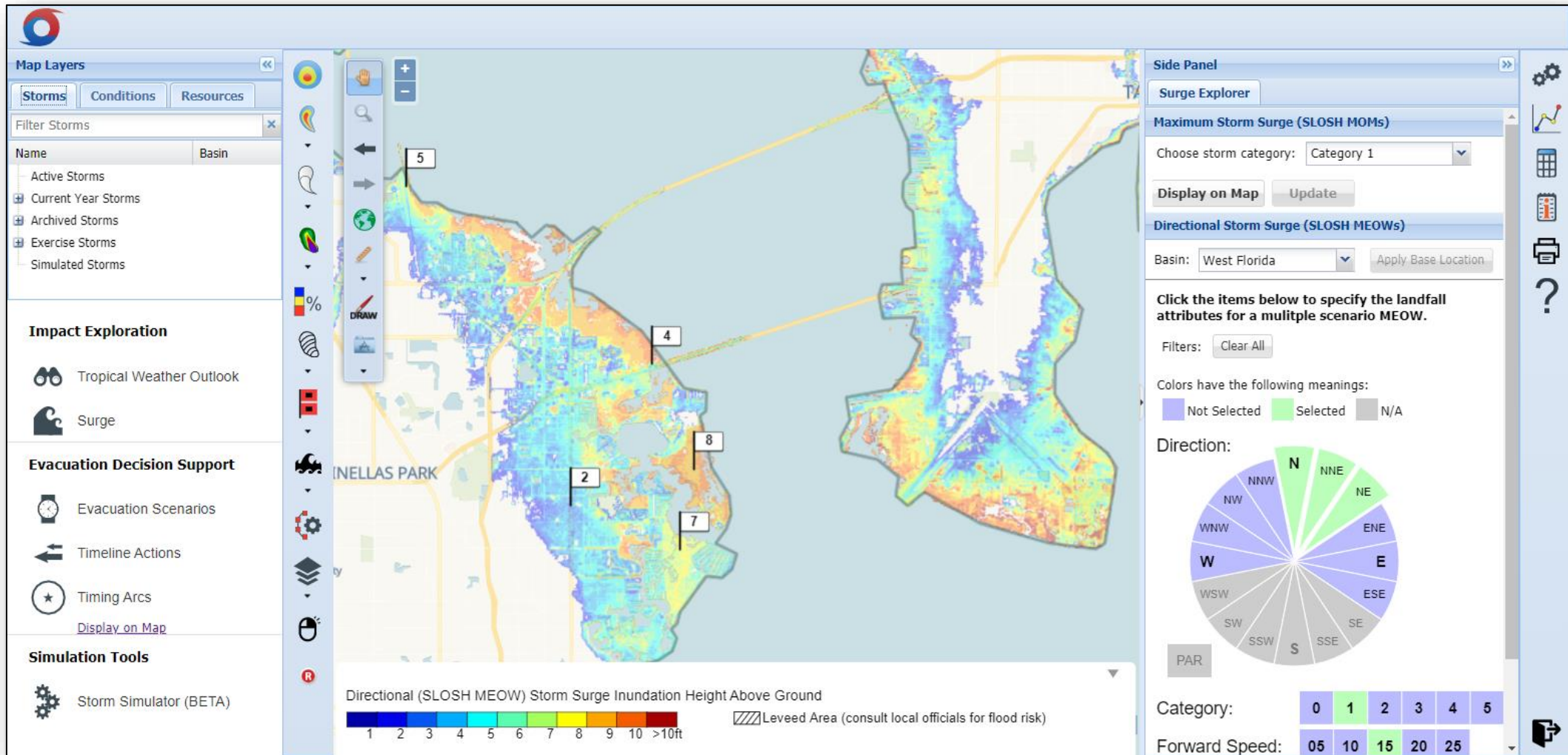
Main Reason it is Hard to Communicate Storm Surge

There are numerous reference levels (datums), which one does a person use?

How high is 5 ft of surge?

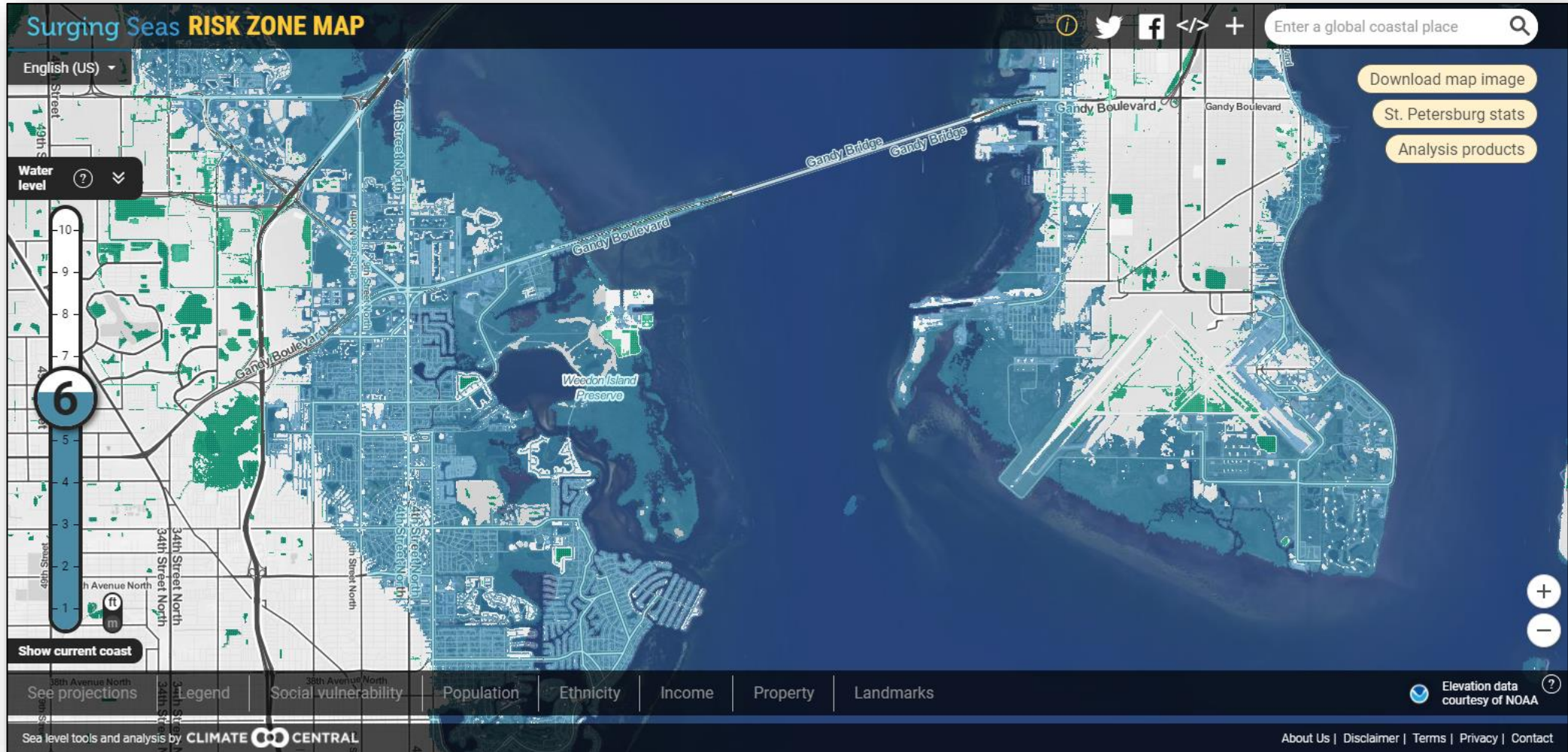


View Surge Heights on a Map - HVX



<https://hvx.hurrevac.com>

View Surge Height on a Map - Sea Level Rise Viewer



<https://ss2.climatecentral.org>

Tips for Using NHC Storm Surge Forecasts



National Hurricane Center ✓ @NHC_Atlantic · Aug 27

Unsurvivable storm surge with large and destructive waves will cause catastrophic damage from Sea Rim State Park, Texas, to Intracoastal City, Louisiana, including Calcasieu and Sabine Lakes. This surge could penetrate up to 30 miles inland from the immediate coastline. #Laura



417

11.8K

7.8K

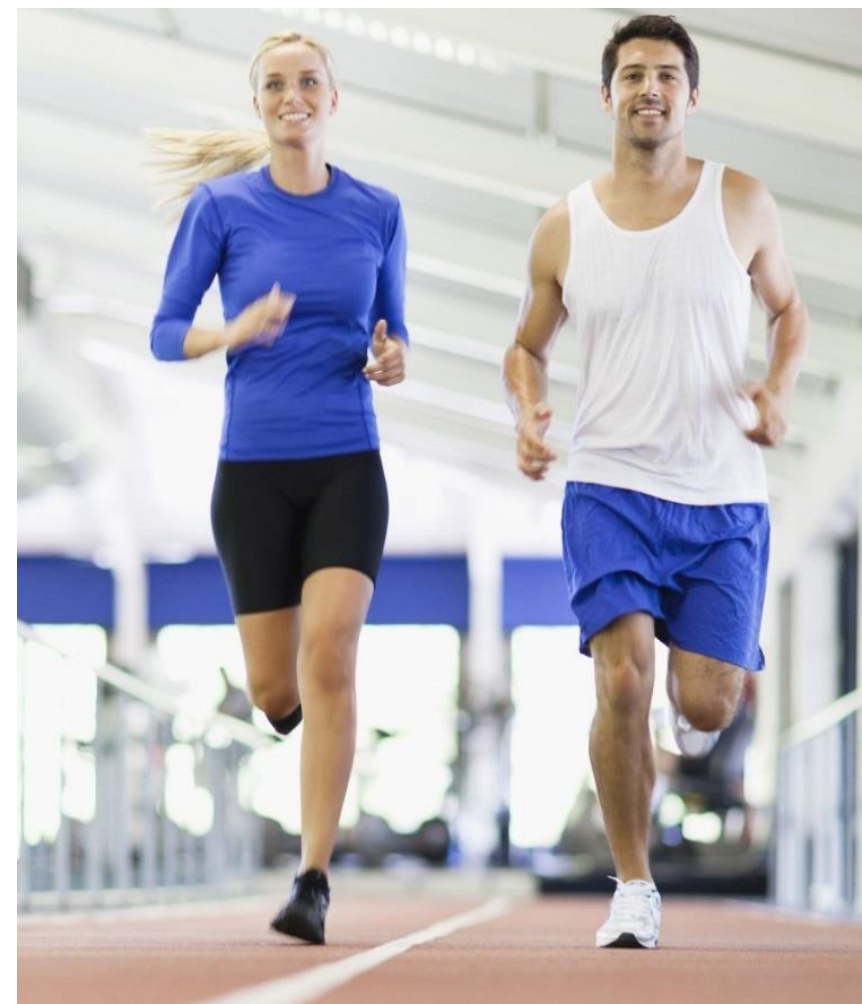


The surge forecast displayed is what people should prepare for

This is the 1-in-10 forecast, a realistic threat of a peak surge reaching this height



weather.gov/tampa/workouts



Weather Workout – Storm Surge, River Forecasting

NWS TAMPA BAY (RUSKIN, FL)

FEBRUARY 23, 2021

[HTTPS://WEATHER.GOV/TAMPA/WORKOUTS](https://weather.gov/tampa/workouts)