



NOAA - National Weather Service

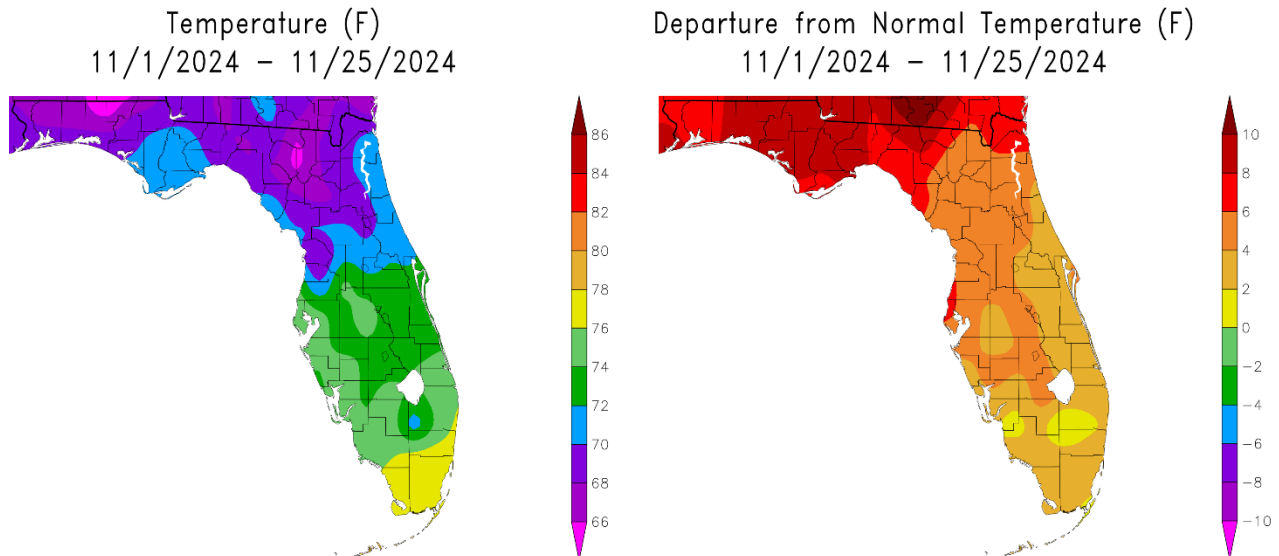
Tampa Bay Area

2525 14th Avenue SE, Ruskin, Florida 33570

813-645-2323 <https://weather.gov/tampabay>

Preliminary November and Autumn (Sep/Oct/Nov) 2024 Climate Summary

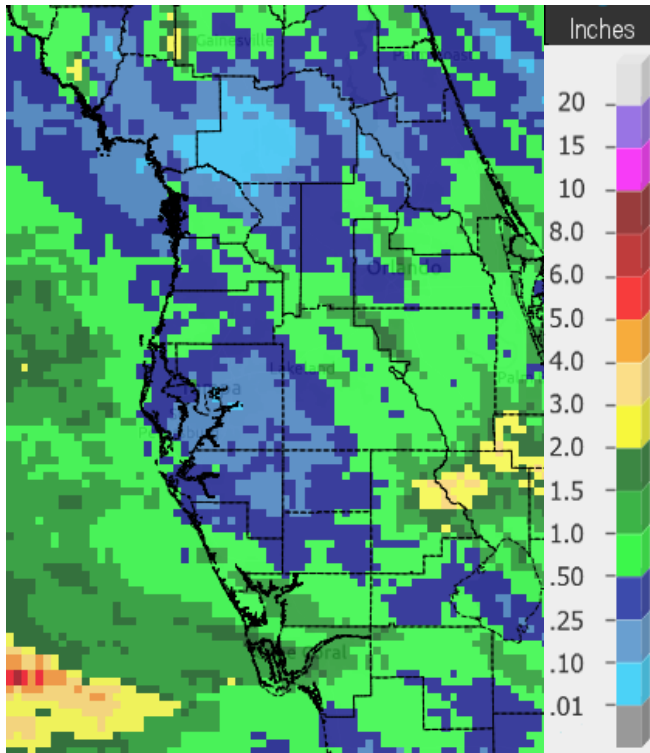
The first half of November was much warmer than normal, with temperatures more typical of late September. Then during the second half of the month we've seen a couple of cold fronts sweep through the area bringing us several days of much below normal temperatures. However, even with these cooler temperatures we're still seeing a few sites potentially end up in the Top Ten Warmest for November. For the month so far, temperatures are averaging from 2 to 6 degrees above normal.



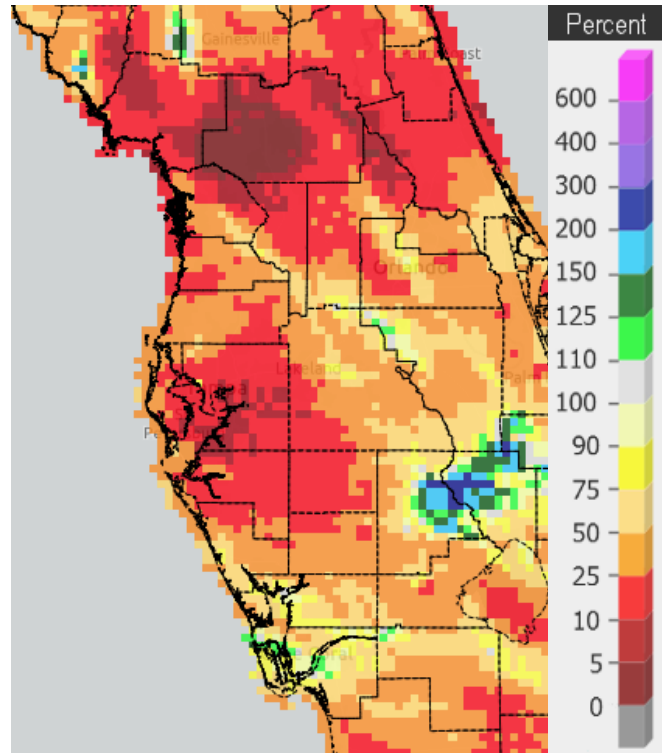
Graphics Source: NOAA Regional Climate Centers

As for Autumn, we had temperatures about 1 to 4 degrees above normal in September, near normal to about 2 degrees above normal in October, and 2 to 6 degrees above normal so far this November. Overall, this Autumn temperatures are averaging about 2 to 4 degrees above normal which could place most locations in the Top Ten Warmest for Autumn.

Looking at rainfall, most days in November 2024 were dry, which is not that unusual, but we have seen a couple of fronts move through bringing some rainfall to parts of the area.

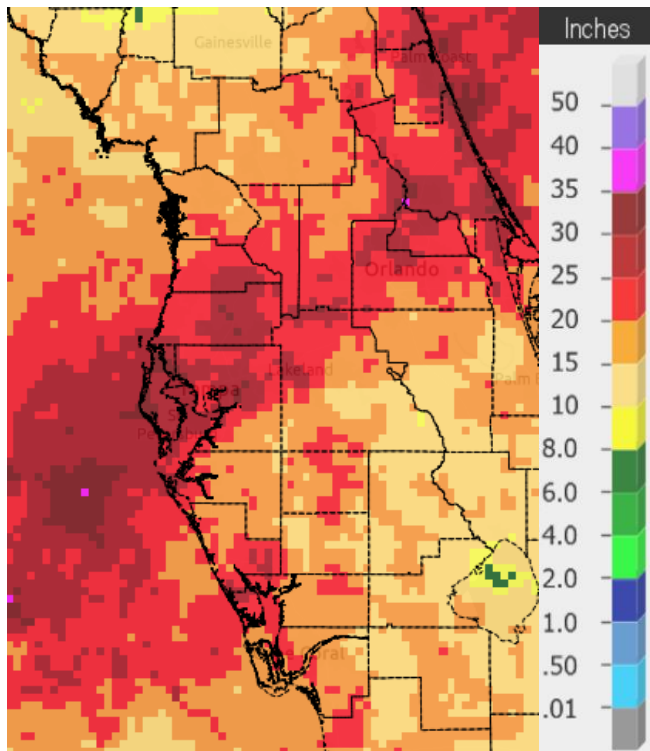


Rainfall November 1-25, 2024

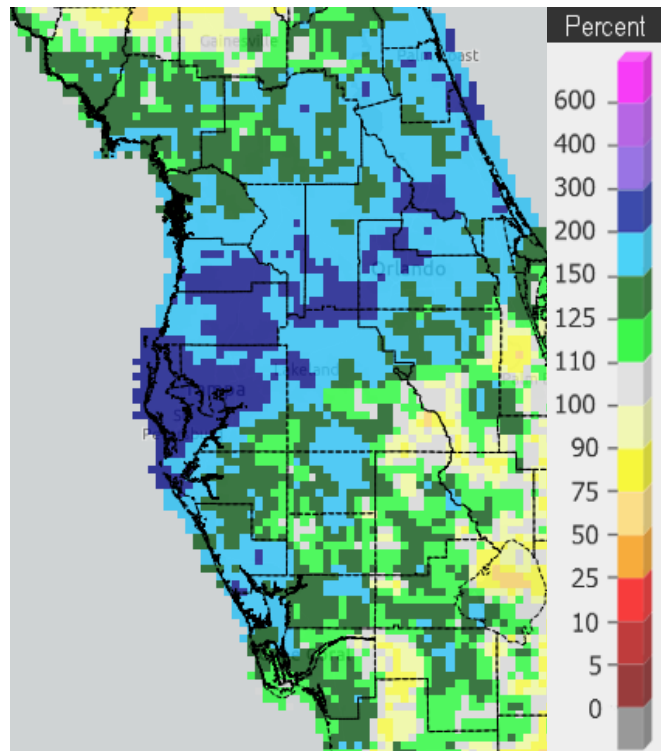


Percent of Normal

As for rainfall during Autumn it was much greater than normal in many areas thanks to the two tropical systems, Helene and Milton.



Rainfall Sep 1 - Nov 25, 2024



Percent of Normal

On the following pages are tables of the Top Ten Warmest, Coolest, Wettest, and Driest Novembers and Autumns at some official NWS locations, which include the average/total so far for this November and Autumn where available, and the 1991-2020 Normal (average) temperature and rainfall for November and Autumn.

CHIEFLAND 5 SE (records began in July 1956):

Warmest Novembers	Coolest Novembers	Wettest Novembers	Driest Novembers
1 69.4 in 1985	1 56.6 in 1976	1 7.52 in 1972	1 Trace in 1978
2 69.2 in 1998	2 56.7 in 2008	2 6.47 in 1997	2 0.15 in 2012
3 68.9 in 1986	3 57.3 in 1970	3 6.02 in 1987	3 0.25 in 2016
4 68.6 in 1994	4 58.2 in 1962	4 5.94 in 2002	4 0.33 in 1956
5 67.5 in 1982	5 58.3 in 1968	5 5.25 in 1958	5 0.35 in 1970
6 67.0 in 2022	6 59.2 in 1969	6 4.95 in 1983	6 0.48 in 1998
7 66.9 in 2020	7 59.3 in 2021	7 4.80 in 1963	7 0.61 in 1990
66.9 in 1973	8 59.4 in 2014	8 4.73 in 2013	8 0.62 in 1991
9 66.5 in 1958	9 59.7 in 1984	9 4.55 in 1981	9 0.66 in 2001
10 66.3 in 1978	10 59.8 in 1963	10 4.50 in 1986	10 0.82 in 1993

Average Temperature for November 1-25, 2024 = 68.8°

Normal Temperature for November at CHIF1 = 62.7°

Total Rainfall for November 1-25, 2024 = 0.44 inches

Normal Rainfall for November at CHIF1 = 2.22 inches

Warmest Autumns	Coolest Autumns	Wettest Autumns	Driest Autumns
1 75.2 in 2018	1 67.1 in 1976	1 26.52 in 2004	1 2.05 in 1978
2 75.0 in 2020	2 67.9 in 2008	2 24.26 in 1983	2 3.83 in 2008
3 74.9 in 1998	3 68.7 in 2006	3 20.54 in 1964	3 4.20 in 1961
4 74.2 in 1986	4 68.8 in 1968	4 18.65 in 1959	4 5.13 in 2010
5 73.9 in 1985	5 68.9 in 2000	5 17.59 in 1985	5 5.37 in 1970
6 73.7 in 1959	6 69.1 in 1963	6 16.94 in 1998	6 5.38 in 2003
7 73.4 in 2019	69.1 in 1969	7 16.38 in 1997	7 6.11 in 2022
8 73.0 in 1973	8 69.3 in 1956	8 15.91 in 1960	8 6.24 in 1991
9 72.9 in 2016	69.3 in 1962	9 15.67 in 2002	9 6.61 in 1974
10 72.6 in 1994	10 69.6 in 2010	10 15.26 in 2017	10 6.65 in 2005

Average Temperature for Sep 1 - Nov 25, 2024 = 74.1°

Normal Temperature for Autumn at CHIF1 = 70.9°

Total Rainfall for Sep 1 - Nov 25, 2024 = 11.97 inches

Normal Rainfall for Autumn at CHIF1 = 11.21 inches

INVERNESS 3 SE (records began in July 1948):

Warmest Novembers	Coollest Novembers	Wettest Novembers	Driest Novembers
1 73.1 in 2015	1 59.0 in 1991	1 7.73 in 1980	1 0.00 in 2004
2 71.0 in 2020	2 59.5 in 1976	2 6.40 in 1997	0.00 in 1978
3 70.3 in 1958	3 60.3 in 2002	3 6.21 in 1972	3 0.01 in 2016
4 69.7 in 2022	4 60.5 in 2014	4 5.48 in 1951	4 0.02 in 1950
5 69.3 in 1964	5 60.6 in 1997	5 4.90 in 2015	5 0.07 in 2012
69.3 in 1978	6 61.0 in 1950	6 4.78 in 2014	6 0.23 in 1993
7 68.8 in 1957	7 61.3 in 2012	7 4.69 in 1988	7 0.25 in 1967
8 68.6 in 1998	8 61.4 in 1995	8 4.35 in 2022	8 0.28 in 1956
9 68.5 in 1973	9 61.6 in 2000	9 3.77 in 2005	9 0.36 in 2001
68.5 in 1960	10 61.7 in 1949	10 3.70 in 2017	10 0.38 in 1966

Average Temperature for November 2024 = Not Available Yet
Normal Temperature for November at INVF1 = 64.3°

Total Rainfall for November 2024 = Not Available Yet
Normal Rainfall for November at INVF1 = 1.83 inches

Warmest Autumns	Coollest Autumns	Wettest Autumns	Driest Autumns
1 76.8 in 2020	1 68.4 in 1976	1 21.53 in 2017	1 2.08 in 1967
2 76.1 in 2015	2 69.4 in 1997	2 21.34 in 1960	2 2.92 in 1978
3 75.1 in 1958	3 70.2 in 1991	3 21.07 in 1950	3 4.19 in 1961
4 75.0 in 2019	4 70.4 in 2006	4 19.73 in 2021	4 4.56 in 1974
5 74.9 in 1998	5 70.6 in 2000	5 19.55 in 1992	5 4.97 in 2010
74.9 in 1960	6 70.7 in 1987	6 19.27 in 1997	6 5.13 in 2003
74.9 in 1959	7 70.8 in 2014	7 18.83 in 2004	7 5.37 in 1954
8 74.2 in 1948	8 71.1 in 1956	8 17.75 in 2016	8 5.47 in 2012
9 74.1 in 2009	9 71.3 in 2002	9 17.32 in 2001	9 5.85 in 2000
74.1 in 2007	10 71.5 in 1996	10 16.51 in 1988	10 6.14 in 1996

Average Temperature for Autumn 2024 = Not Available Yet
Normal Temperature for Autumn at INVF1 = 71.9°

Total Rainfall for Autumn 2024 = Not Available Yet
Normal Rainfall for Autumn at INVF1 = 10.56 inches

BROOKSVILLE AREA (records began in January 1892):

Warmest Novembers	Coollest Novembers	Wettest Novembers	Driest Novembers
1 73.2 in 2015	1 57.5 in 1901	1 9.31 in 1916	1 0.00 in 1967
2 72.7 in 1948	2 60.3 in 2008	2 9.17 in 1987	2 Trace in 2016
3 72.6 in 1946	3 60.5 in 1892	3 8.30 in 1951	Trace in 1931
4 71.0 in 2020	4 60.8 in 2014	4 7.08 in 2014	4 0.01 in 1978
71.0 in 1958	5 61.1 in 1923	5 6.64 in 1937	5 0.05 in 1928
6 70.7 in 1994	6 61.3 in 2000	6 6.56 in 1980	6 0.12 in 2001
7 70.5 in 1973	7 61.4 in 2012	7 6.28 in 1999	7 0.15 in 1913
70.5 in 1896	61.4 in 1917	8 6.14 in 1972	8 0.18 in 1940
9 70.1 in 1905	9 61.8 in 2002	9 5.49 in 1932	9 0.22 in 1956
10 69.8 in 2022	10 61.9 in 1962	10 5.14 in 1988	0.22 in 1924
69.8 in 1988		5.14 in 1920	0.22 in 1900
69.8 in 1929			

Average Temperature for November 1-25, 2024 = 69.8°

Normal Temperature for November at BKV = 65.1°

Total Rainfall for November 1-25, 2024 = 0.47 inches

Normal Rainfall for November at BKV = 1.59 inches

Warmest Autumns	Coollest Autumns	Wettest Autumns	Driest Autumns
1 76.6 in 2020	1 69.3 in 1892	1 27.84 in 1950	1 2.30 in 1903
2 76.0 in 1911	2 69.5 in 1901	2 24.74 in 1912	2 3.58 in 2008
3 75.9 in 2015	3 70.2 in 1920	3 22.68 in 1894	3.58 in 1978
4 75.7 in 1905	4 70.3 in 2008	4 21.62 in 1947	4 3.87 in 1967
5 75.4 in 1941	5 70.4 in 1923	5 21.50 in 1922	5 3.97 in 1909
75.4 in 1919	6 70.5 in 2000	6 21.46 in 1995	6 4.10 in 2010
75.4 in 1915	7 70.8 in 2006	7 21.24 in 1921	7 4.58 in 1940
8 75.3 in 1946	8 70.9 in 2014	8 20.56 in 1938	8 4.61 in 1991
75.3 in 1927	70.9 in 1894	9 20.36 in 1911	9 5.37 in 2015
10 75.2 in 2018	10 71.0 in 1953	10 19.88 in 1988	10 5.61 in 1961
75.2 in 1973			

Average Temperature for Sep 1 - Nov 25, 2024 = 75.6°

Normal Temperature for Autumn at BKV = 72.7°

Total Rainfall for Sep 1 - Nov 25, 2024 = 19.07 inches

Normal Rainfall for Autumn at BKV = 10.17 inches

ST LEO (records began in April 1895):

Warmest Novembers	Coollest Novembers	Wettest Novembers	Driest Novembers
1 75.1 in 1986	1 60.8 in 1917	1 12.48 in 1988	1 Trace in 1960
2 73.6 in 1985	2 61.3 in 1901	2 8.34 in 1951	2 0.02 in 1978
3 73.2 in 1946	3 61.7 in 1910	3 7.36 in 1987	3 0.03 in 1931
4 73.1 in 1948	4 62.2 in 1930	4 7.21 in 2014	0.03 in 1928
5 72.0 in 1998	5 62.3 in 2014	5 6.72 in 2022	5 0.06 in 2016
6 71.8 in 2015	6 62.5 in 1923	6 6.22 in 1916	6 0.08 in 2012
71.8 in 1994	7 62.6 in 1970	7 6.12 in 1963	7 0.21 in 1993
8 71.5 in 1982	8 62.8 in 1933	8 6.06 in 1972	8 0.22 in 1940
9 71.4 in 1958	62.8 in 1932	9 5.84 in 1911	9 0.23 in 1913
10 71.3 in 2020	62.8 in 1904	10 5.61 in 1918	10 0.26 in 1945
71.3 in 1978			

Average Temperature for November 2024 = Not Available Yet
Normal Temperature for November at STLF1 = 66.8°

Total Rainfall for November 2024 = Not Available Yet
Normal Rainfall for November at STLF1 = 1.86 inches

Warmest Autumns	Coollest Autumns	Wettest Autumns	Driest Autumns
1 77.9 in 1985	1 69.8 in 1917	1 25.80 in 1988	1 1.52 in 1978
2 77.4 in 1986	2 70.1 in 1903	2 25.13 in 1912	2 3.19 in 1940
3 76.5 in 2020	3 70.2 in 1930	3 24.60 in 1922	3 3.56 in 2010
76.5 in 1998	4 70.7 in 1920	4 22.73 in 1953	4 3.81 in 1909
5 76.4 in 2007	5 71.0 in 1976	5 21.77 in 1997	5 4.14 in 1967
6 76.2 in 1946	71.0 in 1923	6 21.48 in 1982	6 4.76 in 1991
7 76.1 in 2009	7 71.1 in 1910	7 21.40 in 1950	7 5.09 in 2008
76.1 in 1941	8 71.4 in 1943	8 21.29 in 1921	8 5.11 in 2018
9 75.9 in 2004	9 71.5 in 2014	9 20.71 in 1949	9 5.33 in 1931
10 75.8 in 2018	10 71.8 in 1956	10 20.35 in 2004	10 5.63 in 1961
75.8 in 2003	71.8 in 1922		

Average Temperature for Autumn 2024 = Not Available Yet
Normal Temperature for Autumn at STLF1= 73.6°

Total Rainfall for Autumn 2024 = Not Available Yet
Normal Rainfall for Autumn at STLF1 = 11.55 inches

TARPON SPRINGS (records began in January 1892):

Warmest Novembers	Coollest Novembers	Wettest Novembers	Driest Novembers
1 75.9 in 1986	1 59.6 in 2004	1 9.13 in 1988	1 0.00 in 2016
2 74.4 in 1985	2 60.0 in 1901	2 8.18 in 1916	2 Trace in 1939
3 74.3 in 1946	3 61.5 in 1917	3 6.99 in 1997	Trace in 1931
4 73.5 in 2015	4 61.7 in 1962	4 6.63 in 1992	4 0.02 in 1978
5 72.6 in 1994	61.7 in 1892	5 6.09 in 2014	5 0.06 in 1933
6 72.3 in 1998	6 61.9 in 1910	6 5.80 in 1963	6 0.08 in 1942
7 71.8 in 2003	7 62.5 in 1904	7 5.57 in 1920	7 0.09 in 1940
8 71.6 in 1896	8 62.6 in 2014	8 5.49 in 2020	0.09 in 1928
9 71.4 in 1982	62.6 in 1970	9 5.19 in 1955	9 0.10 in 1930
10 71.3 in 1929	10 63.0 in 1976	10 5.18 in 1896	10 0.13 in 1924
71.3 in 1919	63.0 in 1912		

Average Temperature for November 1-22, 2024 = 75.6°

Normal Temperature for November at TRPF1 = 67.5°

Total Rainfall for November 1-22, 2024 = 0.25 inches

Normal Rainfall for November at TRPF1 = 1.90 inches

Warmest Autumns	Coollest Autumns	Wettest Autumns	Driest Autumns
1 78.1 in 1985	1 70.8 in 1917	1 28.87 in 1911	1 1.85 in 2005
2 78.0 in 1986	70.8 in 1892	2 28.34 in 1988	2 3.33 in 1978
3 77.9 in 1919	3 71.4 in 1903	3 24.31 in 2014	3 3.44 in 1967
4 77.6 in 2018	4 71.5 in 1976	4 22.25 in 1997	4 4.03 in 2023
5 76.8 in 2020	5 71.7 in 1967	5 21.71 in 1983	5 4.62 in 2008
76.8 in 1946	71.7 in 1901	6 21.70 in 1912	6 4.85 in 2010
7 76.7 in 2015	7 71.9 in 1963	7 21.43 in 1975	7 4.86 in 1927
76.7 in 1994	71.9 in 1962	8 20.78 in 1995	8 5.57 in 1909
9 76.6 in 2019	71.9 in 1940	20.78 in 1959	9 5.74 in 1930
76.6 in 1998	71.9 in 1904	10 20.60 in 1971	10 5.99 in 1981
	71.9 in 1899		

Average Temperature for Sep 1 - Nov 22, 2024 = 78.5°

Normal Temperature for Autumn at TRPF1 = 74.8°

Total Rainfall for Sep 1 - Nov 22, 2024 = 16.45 inches

Normal Rainfall for Autumn at TRPF1 = 12.12 inches

TAMPA AREA (records began in April 1890):

Warmest Novembers	Coollest Novembers	Wettest Novembers	Driest Novembers
1 76.3 in 1986	1 61.4 in 1901	1 6.12 in 1963	1 Trace in 1960
2 76.2 in 2015	2 61.9 in 1970	2 5.97 in 1988	2 0.01 in 2016
3 74.6 in 2020	3 62.3 in 1968	3 5.40 in 2020	0.01 in 1978
4 73.7 in 1946	4 62.5 in 1962	4 5.38 in 1944	4 0.04 in 1931
5 73.6 in 1948	5 62.8 in 1976	5 5.26 in 2014	5 0.05 in 1928
73.6 in 1985	6 62.9 in 1969	6 5.18 in 2022	6 0.08 in 1927
7 72.7 in 1958	62.9 in 1917	7 4.89 in 1953	7 0.10 in 2001
8 72.6 in 2022	8 63.3 in 1910	8 4.85 in 1925	0.10 in 1942
9 72.5 in 1998	9 63.4 in 1923	9 4.75 in 1941	9 0.11 in 2007
10 72.3 in 1994	10 63.7 in 1949	10 4.36 in 1987	10 0.12 in 2017
			0.12 in 1974

Average Temperature for November 1-25, 2024 = 74.6°

Normal Temperature for November at TPA = 69.8°

Total Rainfall for November 1-25, 2024 = 1.16 inches

Normal Rainfall for November at TPA = 1.40 inches

Warmest Autumns	Coollest Autumns	Wettest Autumns	Driest Autumns
1 79.7 in 2020	1 71.0 in 1976	1 24.38 in 1894	1 3.19 in 2010
2 79.0 in 2015	2 71.6 in 1903	2 22.83 in 1912	2 3.30 in 1909
3 78.9 in 2018	71.6 in 1891	3 20.45 in 1997	3 3.62 in 1961
4 78.4 in 1986	4 71.7 in 1968	4 19.80 in 1922	4 4.06 in 1942
5 78.1 in 2019	5 71.8 in 1917	5 19.62 in 1988	5 4.21 in 1940
6 77.9 in 2017	71.8 in 1901	6 19.07 in 1947	6 4.25 in 1913
7 77.8 in 1985	7 71.9 in 1923	7 18.57 in 2022	7 4.35 in 1974
8 77.7 in 2016	8 72.2 in 1892	8 18.15 in 1953	8 5.07 in 1967
9 77.5 in 1919	9 72.3 in 1962	9 17.60 in 1890	9 5.22 in 1984
10 77.3 in 2021	10 72.4 in 1956	10 16.58 in 1911	10 5.33 in 2003
	72.4 in 1910		

Average Temperature for Sep 1 - Nov 25, 2024 = 78.8°

Normal Temperature for Autumn at TPA = 76.6°

Total Rainfall for Sep 1 - Nov 25, 2024 = 28.79 inches

Normal Rainfall for Autumn at TPA = 9.83 inches

ST PETERSBURG (records began in August 1914):

Warmest Novembers		Coolest Novembers		Wettest Novembers		Driest Novembers	
1	77.4 in 1986	1	63.9 in 1917	1	6.94 in 1988	1	0.00 in 1931
2	76.3 in 1985	2	64.3 in 1962	2	6.85 in 1953	2	0.02 in 1960
3	74.9 in 2015	3	64.7 in 1949	3	6.80 in 1987	3	0.03 in 2016
4	74.8 in 1946	4	65.1 in 1976	4	6.18 in 2020		0.03 in 1942
5	74.5 in 1948	5	65.2 in 1995	5	6.04 in 1963	5	0.04 in 2001
6	74.3 in 2020		65.2 in 1951	6	5.71 in 1916	6	0.10 in 1978
7	73.8 in 2005	7	65.3 in 1950	7	5.63 in 1925	7	0.12 in 1974
8	73.7 in 1978	8	65.4 in 1954	8	5.08 in 1954	8	0.14 in 1930
9	73.5 in 1958	9	65.7 in 1956	9	5.03 in 1968	9	0.15 in 1928
10	72.9 in 1994		65.7 in 1923	10	5.02 in 1915	10	0.18 in 1946
	72.9 in 1929						

Average Temperature for November 1-25, 2024 = 75.1°
 Normal Temperature for November at SPG = 70.6°

Total Rainfall for November 1-25, 2024 = 0.15 inches
 Normal Rainfall for November at SPG = 1.46 inches

Warmest Autumns		Coolest Autumns		Wettest Autumns		Driest Autumns	
1	80.0 in 1985	1	72.6 in 1917	1	32.75 in 1988	1	2.13 in 2010
2	79.9 in 1986	2	73.2 in 1956	2	30.04 in 1953	2	4.00 in 1990
3	79.8 in 2005	3	73.4 in 1952	3	26.31 in 1986	3	4.49 in 1967
4	79.3 in 2020	4	73.5 in 1954	4	26.30 in 1952	4	4.69 in 2008
5	79.1 in 2015		73.5 in 1953	5	21.83 in 1997	5	4.84 in 1964
6	79.0 in 2018	6	73.6 in 1976	6	21.06 in 1922	6	5.01 in 1940
7	78.9 in 2019		73.6 in 1962	7	20.14 in 1954	7	5.52 in 1927
8	78.4 in 2013		73.6 in 1923	8	19.12 in 1918	8	5.61 in 1966
	78.4 in 1941	9	73.7 in 1943	9	19.07 in 2001	9	5.73 in 1965
10	78.3 in 2010	10	73.9 in 1950	10	18.52 in 1959	10	5.82 in 2023
	78.3 in 1919						

Average Temperature for Sep 1 - Nov 25, 2024 = 80.1°
 Normal Temperature for Autumn at SPG = 77.0°

Total Rainfall for Sep 1 - Nov 25, 2024 = *21.54 inches
 Normal Rainfall for Autumn at SPG = 10.28 inches

PLANT CITY (records began in September 1892):

Warmest Novembers	Coollest Novembers	Wettest Novembers	Driest Novembers
1 75.7 in 1986	1 61.8 in 1932	1 7.88 in 1953	1 0.00 in 1960
2 74.6 in 2015	2 62.0 in 1930	2 7.34 in 1988	0.00 in 1931
3 74.3 in 1948	3 62.1 in 1917	3 6.89 in 2020	0.00 in 1905
4 74.2 in 2020	4 62.4 in 1933	4 6.75 in 2014	4 0.01 in 2007
5 73.9 in 1946	5 62.6 in 1904	5 6.46 in 1963	5 0.05 in 2012
6 73.8 in 2022	6 62.9 in 1912	6 5.90 in 1918	6 0.10 in 1928
7 72.7 in 1985	7 63.1 in 2014	7 5.56 in 1971	0.10 in 1924
8 72.5 in 1896	8 63.3 in 1962	8 4.89 in 2022	8 0.13 in 1940
9 72.3 in 1994	63.3 in 1949	9 4.63 in 1980	9 0.15 in 2017
72.3 in 1958	10 63.4 in 1926	10 4.52 in 1987	0.15 in 1978

Average Temperature for November 1-25, 2024 = 73.6°

Normal Temperature for November at PLCF1 = 69.4°

Total Rainfall for November 1-25, 2024 = 0.16 inches

Normal Rainfall for November at PLCF1 = 1.76 inches

Warmest Autumns	Coollest Autumns	Wettest Autumns	Driest Autumns
1 79.6 in 2020	1 70.4 in 1930	1 25.05 in 1947	1 1.89 in 1909
2 78.4 in 2018	2 70.8 in 1932	2 23.20 in 1894	2 1.99 in 1961
3 78.3 in 2019	3 71.2 in 1940	3 23.04 in 1988	3 3.56 in 1940
4 77.9 in 1986	4 71.5 in 2000	4 21.72 in 1953	4 4.08 in 1991
5 77.4 in 2015	5 71.6 in 1976	5 20.54 in 2020	5 4.29 in 1927
6 77.2 in 2022	6 71.7 in 1943	6 20.48 in 2022	6 4.41 in 1990
77.2 in 1985	7 72.0 in 1937	7 20.36 in 2014	7 4.55 in 2010
8 76.8 in 2023	72.0 in 1909	8 20.15 in 2004	8 4.57 in 1939
9 76.4 in 1946	9 72.2 in 1968	9 20.06 in 1998	9 4.63 in 1967
10 76.2 in 2021	10 72.4 in 1926	10 19.92 in 1959	10 4.67 in 2008

Average Temperature for Sep 1 - Nov 25, 2024 = 79.6°

Normal Temperature for Autumn at PLCF1 = 76.1°

Total Rainfall for Sep 1 - Nov 25, 2024 = 23.29 inches

Normal Rainfall for Autumn at PLCF1 = 11.33 inches

LAKELAND AREA (records began in January 1915):

Warmest Novembers	Coollest Novembers	Wettest Novembers	Driest Novembers
1 76.9 in 1986	1 62.6 in 1970	1 7.56 in 2014	1 0.00 in 1924
2 75.4 in 2015	2 62.9 in 1962	2 7.19 in 1988	2 Trace in 2016
3 73.4 in 1985	3 63.0 in 1969	3 6.08 in 1987	Trace in 1960
4 73.3 in 1994	4 63.4 in 1949	4 5.94 in 1941	Trace in 1917
73.3 in 1948	5 63.5 in 1976	5 5.80 in 2020	5 0.03 in 1931
6 73.1 in 1946	63.5 in 1951	6 5.71 in 1963	6 0.05 in 1928
7 73.0 in 2020	63.5 in 1950	7 5.54 in 1980	7 0.07 in 1950
8 72.6 in 2022	8 63.7 in 1968	8 5.37 in 1953	8 0.08 in 2012
9 71.6 in 2003	9 63.9 in 2008	9 4.59 in 2018	9 0.10 in 1991
71.6 in 1988	10 64.0 in 1923	10 4.48 in 1997	10 0.11 in 1940

Average Temperature for November 1-25, 2024 = 73.0°

Normal Temperature for November at LLDF1 = 69.2°

Total Rainfall for November 1-25, 2024 = 0.36 inches

Normal Rainfall for November at LLDF1 = 1.93 inches

Warmest Autumns	Coollest Autumns	Wettest Autumns	Driest Autumns
1 79.2 in 1986	1 71.5 in 1976	1 22.45 in 2014	1 2.99 in 1961
2 78.6 in 2020	2 72.1 in 1943	2 21.46 in 2004	2 3.21 in 1940
3 78.3 in 2015	3 72.2 in 1923	3 19.78 in 1947	3 4.16 in 1942
4 78.1 in 1985	4 72.3 in 2006	4 19.52 in 1918	4 4.25 in 1927
5 78.0 in 2018	72.3 in 1968	5 18.91 in 2022	5 4.28 in 1934
6 77.4 in 2019	72.3 in 1956	6 18.47 in 1998	6 4.58 in 2010
7 77.0 in 1994	7 72.4 in 1967	7 18.39 in 1929	7 4.69 in 2008
8 76.8 in 2009	8 72.5 in 1940	8 18.29 in 1953	8 5.01 in 1967
9 76.7 in 1990	9 72.6 in 1954	9 17.36 in 1997	9 5.12 in 1978
10 76.6 in 2017	10 72.7 in 1962	10 17.09 in 1989	10 5.35 in 1974
	72.7 in 1953		
	72.7 in 1924		

Average Temperature for Sep 1 - Nov 25, 2024 = 78.1°

Normal Temperature for Autumn at LLDF1 = 75.7°

Total Rainfall for Sep 1 - Nov 25, 2024 = 31.47 inches

Normal Rainfall for Autumn at LLDF1 = 12.59 inches

WINTER HAVEN AREA (records began in January 1941):

Warmest Novembers	Coollest Novembers	Wettest Novembers	Driest Novembers
1 76.8 in 1986	1 63.1 in 1962	1 7.81 in 1988	1 0.00 in 1960
2 75.6 in 1948	2 63.2 in 1970	2 7.13 in 1987	0.00 in 1950
3 75.1 in 2015	3 63.9 in 2008	3 6.76 in 1953	3 Trace in 2011
4 74.9 in 1985	63.9 in 1968	4 6.27 in 1963	4 0.01 in 2012
5 74.5 in 1946	5 64.1 in 1976	5 5.32 in 1994	5 0.07 in 2016
6 73.5 in 2020	6 64.5 in 1949	6 5.21 in 1980	6 0.13 in 1966
7 73.1 in 1994	7 64.6 in 1969	7 4.94 in 1951	7 0.16 in 1942
8 72.6 in 1988	8 64.7 in 1981	8 4.07 in 1995	8 0.19 in 1985
9 72.5 in 2022	9 64.9 in 1950	9 4.00 in 2020	9 0.20 in 2017
10 72.4 in 1958	10 65.0 in 2012	10 3.97 in 1968	0.20 in 1991
	65.0 in 1951		0.20 in 1967

Average Temperature for November 1-25, 2024 = 75.0°

Normal Temperature for November at GIF = 69.8°

Total Rainfall for November 1-25, 2024 = 0.89 inches

Normal Rainfall for November at GIF = 1.45 inches

Warmest Autumns	Coollest Autumns	Wettest Autumns	Driest Autumns
1 79.2 in 2020	1 71.8 in 1976	1 21.86 in 1987	1 2.72 in 1961
2 79.1 in 2018	2 72.2 in 1968	2 20.61 in 1947	2 3.11 in 2009
3 79.0 in 1986	3 72.5 in 1962	3 20.57 in 1953	3 4.27 in 1967
4 78.7 in 2019	4 73.0 in 1963	4 20.35 in 1960	4 4.29 in 2008
5 78.4 in 1985	5 73.2 in 2006	5 18.82 in 1959	5 4.91 in 1985
6 78.0 in 2015	6 73.3 in 2008	6 18.11 in 1950	6 5.14 in 1942
7 77.2 in 1998	73.3 in 1981	7 17.84 in 2014	7 5.44 in 1978
77.2 in 1989	73.3 in 1953	8 17.59 in 2001	8 5.54 in 2006
77.2 in 1946	9 73.4 in 1943	9 17.16 in 1988	9 5.78 in 1990
77.2 in 1941	10 73.5 in 2000	10 16.36 in 2020	10 5.87 in 2015

Average Temperature for Sep 1 - Nov 25, 2024 = 79.3°

Normal Temperature for Autumn at GIF = 76.4°

Total Rainfall for Sep 1 - Nov 25, 2024 = 12.80 inches

Normal Rainfall for Autumn at GIF = 8.98 inches

BARTOW (records began in June 1892):

Warmest Novembers	Coollest Novembers	Wettest Novembers	Driest Novembers
1 76.4 in 1986	1 60.9 in 1917	1 7.40 in 1987	1 0.00 in 2016
2 75.3 in 2015	2 61.5 in 1970	2 7.36 in 2002	0.00 in 1960
3 74.5 in 1948	3 62.0 in 1910	3 6.52 in 1963	3 0.02 in 1931
4 73.6 in 2013	4 62.3 in 1901	4 6.33 in 1988	4 0.04 in 1966
73.6 in 1985	5 62.6 in 1904	5 5.97 in 1953	0.04 in 1928
6 73.5 in 1946	62.6 in 1892	6 5.80 in 1951	6 0.05 in 2012
7 73.0 in 1994	7 62.9 in 1962	7 5.18 in 2022	7 0.06 in 1950
8 72.9 in 1958	8 63.5 in 2008	8 4.75 in 1911	8 0.09 in 1923
9 72.5 in 2020	63.5 in 1912	9 4.71 in 1937	9 0.10 in 2007
72.5 in 1998	10 63.6 in 1939	10 4.68 in 2015	0.10 in 1974

Average Temperature for November 2024 = Not Available Yet
Normal Temperature for November at BARF1 = 68.3°

Total Rainfall for November 2024 = Not Available Yet
Normal Rainfall for November at BARF1 = 1.49 inches

Warmest Autumns	Coollest Autumns	Wettest Autumns	Driest Autumns
1 77.8 in 2020	1 71.0 in 1894	1 31.36 in 2022	1 3.71 in 1942
77.8 in 2015	2 71.1 in 1892	2 26.99 in 1894	2 4.88 in 2010
3 77.2 in 1998	3 71.4 in 1917	3 21.30 in 1947	3 5.00 in 1940
4 77.1 in 2018	4 71.8 in 1976	4 20.97 in 1917	4 5.02 in 1990
5 76.9 in 2009	5 72.1 in 1895	5 20.77 in 1922	5 5.25 in 1961
6 76.8 in 1946	6 72.3 in 1914	6 20.38 in 1959	6 5.26 in 1939
76.8 in 1919	7 72.4 in 1970	7 20.31 in 1982	7 5.29 in 1984
8 76.5 in 2019	8 72.5 in 1904	8 19.77 in 1953	8 5.47 in 1974
76.5 in 1958	9 72.8 in 1967	9 19.43 in 1902	9 5.57 in 1906
10 76.4 in 1994	72.8 in 1963	10 19.30 in 1960	10 5.90 in 1927
	72.8 in 1935		

Average Temperature for Autumn 2024 = Not Available Yet
Normal Temperature for Autumn at BARF1 = 74.8°

Total Rainfall for Autumn 2024 = Not Available Yet
Normal Rainfall for Autumn at BARF1 = 11.83 inches

SARASOTA-BRADENTON AREA (records began in January 1911):

Warmest Novembers		Coolest Novembers		Wettest Novembers		Driest Novembers	
1	76.1 in 1986	1	63.2 in 1917	1	9.40 in 1997	1	0.00 in 1931
2	75.4 in 2015	2	63.5 in 1949	2	7.62 in 2020	2	Trace in 1940
3	74.7 in 2020		63.5 in 1923	3	6.81 in 1920		Trace in 1928
4	73.2 in 1948	4	64.2 in 1976	4	6.24 in 1925	4	0.02 in 2016
5	73.1 in 2022	5	64.5 in 2008	5	5.68 in 1953	5	0.06 in 2001
	73.1 in 1958	6	64.6 in 2014	6	5.18 in 1941		0.06 in 1991
7	72.7 in 1994		64.6 in 1981	7	5.15 in 1988	7	0.09 in 1930
8	72.4 in 1985	8	64.7 in 1968	8	4.94 in 1918	8	0.16 in 2007
9	72.2 in 2013	9	64.8 in 1933	9	4.69 in 2002	9	0.20 in 1945
10	72.1 in 1998	10	65.0 in 1962	10	4.55 in 1972	10	0.21 in 1978
	72.1 in 1946						0.21 in 1950

Average Temperature for November 1-25, 2024 = 74.2°

Normal Temperature for November at SRQ = 70.1°

Total Rainfall for November 1-25, 2024 = 0.13 inches

Normal Rainfall for November at SRQ = 1.81 inches

Warmest Autumns		Coolest Autumns		Wettest Autumns		Driest Autumns	
1	79.7 in 2020	1	71.3 in 1976	1	28.46 in 1953	1	3.25 in 2023
	79.7 in 2019	2	72.2 in 1930	2	25.64 in 1962	2	3.64 in 2010
3	78.3 in 2016	3	72.3 in 1943	3	23.66 in 1922	3	4.01 in 1991
4	78.2 in 1986	4	72.5 in 1940	4	23.12 in 1997	4	5.08 in 1942
5	78.0 in 2015	5	72.7 in 1923	5	22.26 in 1912	5	5.44 in 1974
6	77.8 in 2018	6	73.0 in 1981	6	22.01 in 1952	6	5.61 in 2012
7	77.3 in 2007		73.0 in 1944	7	21.30 in 1988	7	5.90 in 2019
8	77.2 in 2023		73.0 in 1937	8	20.43 in 1928	8	5.95 in 1945
9	77.1 in 1998	9	73.1 in 1968	9	20.29 in 1957	9	6.05 in 1944
	77.1 in 1990		73.1 in 1956	10	19.80 in 1960	10	6.27 in 1984

Average Temperature for Sep 1 - Nov 25, 2024 = 78.3°

Normal Temperature for Autumn at SRQ = 76.5°

Total Rainfall for Sep 1 - Nov 25, 2024 = 20.22 inches

Normal Rainfall for Autumn at SRQ = 10.57 inches

VENICE (records began in May 1955):

Warmest Novembers		Coolest Novembers		Wettest Novembers		Driest Novembers	
1	75.8 in 2015	1	64.2 in 2008	1	7.65 in 1997	1	0.00 in 1991
2	74.1 in 1985	2	64.7 in 1962	2	6.02 in 2020	2	0.02 in 2007
3	73.9 in 2022	3	64.9 in 1981	3	5.85 in 1972	3	0.04 in 2001
4	73.6 in 1998		64.9 in 1970	4	5.56 in 1983	4	0.06 in 2016
	73.6 in 1994	5	65.1 in 1956	5	5.55 in 1963	5	0.15 in 1960
6	73.5 in 2020	6	65.2 in 1976	6	4.77 in 1957	6	0.20 in 1993
7	72.5 in 2013	7	65.4 in 1968	7	4.46 in 1980	7	0.30 in 1956
8	72.3 in 2003	8	65.8 in 2014	8	4.14 in 1998	8	0.31 in 1978
9	72.2 in 1978	9	66.0 in 1969	9	3.77 in 1968	9	0.32 in 2012
10	71.9 in 2011	10	66.8 in 2021	10	3.72 in 2014		0.32 in 2003
	71.9 in 1982		66.8 in 1966				

Average Temperature for November 1-25, 2024 = 73.9°

Normal Temperature for November at VNCF1 = 69.9°

Total Rainfall for November 1-25, 2024 = 0.76 inches

Normal Rainfall for November at VNCF1 = 1.54 inches

Warmest Autumns		Coolest Autumns		Wettest Autumns		Driest Autumns	
1	78.9 in 2009	1	71.8 in 1976	1	26.44 in 1983	1	3.04 in 1961
2	78.5 in 1998	2	72.1 in 1968	2	25.83 in 1995	2	3.63 in 1981
3	78.4 in 2015	3	72.8 in 2008	3	25.14 in 2022	3	5.24 in 1978
4	78.0 in 2020		72.8 in 1956	4	21.38 in 1997	4	5.68 in 2023
5	77.8 in 2018	5	73.6 in 1974	5	20.89 in 1960	5	5.81 in 2010
	77.8 in 2013	6	73.7 in 1987	6	20.27 in 1968	6	6.18 in 1964
	77.8 in 1985		73.7 in 1981	7	19.23 in 1959	7	6.59 in 1984
8	77.6 in 2010		73.7 in 1962	8	18.86 in 1982	8	7.16 in 1990
9	77.3 in 1994	9	73.9 in 1977	9	18.67 in 2014	9	7.38 in 2011
10	77.0 in 2023	10	74.0 in 2006	10	18.33 in 1957	10	7.53 in 2019
	77.0 in 2022						
	77.0 in 2017						
	77.0 in 2011						
	77.0 in 2003						

Average Temperature for Sep 1 - Nov 25, 2024 = 78.9°

Normal Temperature for Autumn at VNCF1 = 76.0°

Total Rainfall for Sep 1 - Nov 25, 2024 = 16.21 inches

Normal Rainfall for Autumn at VNCF1 = 12.05 inches

MYAKKA RIVER STATE PARK (Temperature records began in March 1956
and Rainfall records began in Sep 1943):

Warmest Novembers	Coollest Novembers	Wettest Novembers	Driest Novembers
1 75.8 in 2015	1 62.1 in 1962	1 10.19 in 1997	1 0.00 in 2001
2 75.6 in 1986	2 62.4 in 1969	2 5.55 in 2022	2 0.02 in 1950
3 73.4 in 1998	3 62.8 in 1970	3 5.13 in 1953	3 0.03 in 1991
4 73.2 in 1985	4 63.2 in 1968	4 5.04 in 1947	4 0.07 in 2016
5 72.8 in 2020	5 64.1 in 2008	5 5.01 in 1972	5 0.19 in 2012
6 72.7 in 1958	6 65.3 in 2000	6 4.87 in 1981	6 0.20 in 1944
7 72.3 in 2022	7 65.4 in 2012	7 4.76 in 2020	7 0.30 in 1996
	65.4 in 1963	8 4.73 in 1958	0.30 in 1993
9 72.1 in 2013	9 65.6 in 2021	9 4.52 in 1963	0.30 in 1965
72.1 in 1978	10 65.8 in 1976	10 4.45 in 2002	10 0.37 in 1945

Average Temperature for November 2024 = Not Available Yet
Normal Temperature for November at MKCF1 = 69.1°

Total Rainfall for November 2024 = Not Available Yet
Normal Rainfall for November at MKCF1 = 2.02 inches

Warmest Autumns	Coollest Autumns	Wettest Autumns	Driest Autumns
1 78.5 in 2015	1 71.7 in 1962	1 37.20 in 2022*	1 4.57 in 1961
2 78.3 in 1998	2 72.6 in 1968	2 25.70 in 1962	2 5.85 in 1974
3 78.0 in 2019	3 72.7 in 1976	3 23.65 in 1997	3 6.07 in 2023
78.0 in 2018	4 72.8 in 1963	4 23.43 in 1979	4 6.14 in 1991
5 77.9 in 1986	5 73.4 in 1970	5 21.95 in 2014	5 6.52 in 2008
6 77.8 in 1985	73.4 in 1969	6 21.67 in 1995	6 7.52 in 1970
7 77.7 in 1991	7 73.5 in 2008	7 21.13 in 1953	7 7.57 in 1955
8 77.5 in 2020	8 73.7 in 2000	8 20.63 in 1957	8 8.07 in 2012
9 76.8 in 2009	9 73.8 in 1992	9 20.18 in 2001	9 8.67 in 1950
76.8 in 1990	10 73.9 in 1987	10 19.62 in 1952	10 8.75 in 1996

Average Temperature for Autumn 2024 = Not Available Yet
Normal Temperature for Autumn at MKCF1 = 75.6°

Total Rainfall for Autumn 2024 = Not Available Yet
Normal Rainfall for Autumn at MKCF1 = 13.66 inches

WAUCHULA 2 N (records began in January 1933):

Warmest Novembers	Coollest Novembers	Wettest Novembers	Driest Novembers
1 75.7 in 1986	1 61.9 in 2012	1 11.18 in 1987	1 0.02 in 1940
2 74.6 in 2015	2 62.5 in 2014	2 10.38 in 1997	2 0.03 in 1967
3 74.4 in 1948	62.5 in 1949	3 6.43 in 1953	3 0.08 in 1960
4 73.2 in 1946	4 63.2 in 1962	4 5.89 in 1963	4 0.12 in 1991
5 72.7 in 2020	5 63.4 in 1970	5 4.75 in 1972	5 0.16 in 1974
72.7 in 1985	6 63.5 in 1956	6 4.41 in 2002	6 0.17 in 2016
7 72.7 in 1958	7 63.8 in 2000	7 4.37 in 2014	7 0.19 in 2012
8 71.9 in 2022	8 63.9 in 1969	8 3.93 in 2010	8 0.23 in 1944
9 71.7 in 1988	9 64.0 in 1950	9 3.91 in 1937	9 0.24 in 1966
10 71.4 in 1978	10 64.4 in 1954	10 3.44 in 1988	0.24 in 1956
71.4 in 1973			

Average Temperature for November 2024 = Not Available Yet
Normal Temperature for November at WAUF1 = 67.8°

Total Rainfall for November 2024 = Not Available Yet
Normal Rainfall for November at WAUF1 = 1.96 inches

Warmest Autumns	Coollest Autumns	Wettest Autumns	Driest Autumns
1 78.1 in 2009	1 71.6 in 2014	1 31.84 in 2022	1 2.12 in 1961
2 77.9 in 2007	2 71.7 in 2012	2 27.02 in 1953	2 3.84 in 1974
3 77.7 in 1985	3 72.0 in 1956	3 23.48 in 1947	3 4.75 in 1967
4 77.6 in 2020	4 72.1 in 1943	4 20.13 in 1975	4 4.92 in 2008
5 77.5 in 2015	5 72.2 in 1954	5 20.12 in 1952	5 5.10 in 1978
6 77.2 in 1941	6 72.5 in 2010	6 19.04 in 1987	6 5.80 in 1991
7 76.9 in 2018	72.5 in 2006	7 19.02 in 1960	7 6.09 in 1976
8 76.3 in 1946	72.5 in 1953	8 19.00 in 1997	8 6.10 in 1944
9 76.2 in 1989	72.5 in 1944	9 18.33 in 2017	9 6.32 in 1980
10 76.1 in 2019	10 72.6 in 1976	10 16.90 in 1938	10 6.58 in 2003
76.1 in 1990			
76.1 in 1936			

Average Temperature for Autumn 2024 = Not Available Yet
Normal Temperature for Autumn at WAUF1 = 74.6°

Total Rainfall for Autumn 2024 = Not Available Yet
Normal Rainfall for Autumn at WAUF1 = 11.37 inches

ARCHBOLD BIO STN (records began in January 1969):

Warmest Novembers	Coollest Novembers	Wettest Novembers	Driest Novembers
1 76.0 in 2015	1 62.2 in 2008	1 5.94 in 1987	1 0.00 in 2016
2 75.6 in 1986	2 63.1 in 2012	2 5.16 in 1998	0.00 in 2008
3 73.7 in 2020	3 63.2 in 1970	3 4.53 in 2022	3 0.08 in 1986
4 73.3 in 2022	4 64.2 in 1969	4 4.52 in 2002	4 0.12 in 1970
5 72.4 in 1992	5 64.4 in 1981	5 4.46 in 1997	5 0.13 in 1975
6 71.7 in 1985	6 65.1 in 2014	6 4.37 in 1992	6 0.20 in 1996
7 71.6 in 1994	7 65.3 in 2006	7 4.17 in 1977	7 0.21 in 2012
8 71.3 in 1978	8 65.4 in 2000	8 4.16 in 1994	8 0.24 in 2000
71.3 in 1973	9 66.0 in 1991	9 3.80 in 1988	9 0.29 in 1973
10 71.2 in 2013	10 66.3 in 1997	10 3.78 in 2005	10 0.40 in 2006

Average Temperature for November 1-22, 2024 = 74.0°

Normal Temperature for November at ACHF1 = 68.9°

Total Rainfall for November 1-22, 2024 = 0.44 inches

Normal Rainfall for November at ACHF1 = 1.74 inches

Warmest Autumns	Coollest Autumns	Wettest Autumns	Driest Autumns
1 78.2 in 2015	1 71.6 in 2008	1 22.87 in 2017	1 4.62 in 1996
2 78.0 in 2020	2 72.5 in 2012	2 22.49 in 1987	2 4.86 in 1990
3 77.4 in 1986	3 72.7 in 2006	3 21.60 in 2022	3 5.52 in 2006
4 76.6 in 2018	72.7 in 2000	4 20.74 in 1969	4 5.96 in 1974
5 76.3 in 2019	72.7 in 1976	5 18.09 in 2014	5 6.01 in 2018
76.3 in 1985	6 72.8 in 1997	6 17.33 in 1977	6 6.16 in 2010
7 76.2 in 2017	7 73.0 in 1981	7 17.04 in 2001	7 6.27 in 2008
8 76.0 in 2022	8 73.1 in 1970	8 16.98 in 2021	8 6.53 in 1980
9 75.8 in 2023	9 73.2 in 2014	9 16.79 in 1998	9 7.16 in 1984
75.8 in 2016	73.2 in 1984	10 16.55 in 2016	10 7.36 in 2007
75.8 in 1973			

Average Temperature for Sep 1 - Nov 25, 2024 = 78.2°

Normal Temperature for Autumn at ACHF1 = 75.1°

Total Rainfall for Sep 1 - Nov 25, 2024 = 15.59 inches

Normal Rainfall for Autumn at ACHF1 = 12.32 inches

PUNTA GORDA AREA (records began in May 1914):

Warmest Novembers	Coollest Novembers	Wettest Novembers	Driest Novembers
1 78.3 in 1948	1 63.9 in 1917	1 8.02 in 2022	1 0.00 in 1931
2 76.8 in 1986	2 64.2 in 1970	2 6.91 in 2020	2 0.02 in 2012
3 75.9 in 1946	64.2 in 1968	3 5.97 in 1916	3 0.05 in 2016
4 75.5 in 2015	4 65.1 in 2008	4 5.52 in 2002	0.05 in 1990
5 74.3 in 2022	5 65.7 in 1969	5 5.07 in 1987	5 0.07 in 2007
74.3 in 2020	6 65.8 in 1966	6 4.60 in 2014	6 0.08 in 1940
7 74.2 in 1985	7 66.1 in 1976	7 4.54 in 1965	7 0.09 in 1993
8 74.1 in 1958	66.1 in 1923	8 4.40 in 1972	8 0.10 in 1929
9 73.8 in 1961	9 67.0 in 2012	9 4.31 in 1921	9 0.11 in 1973
10 73.6 in 1947	67.0 in 1939	10 4.16 in 1951	10 0.12 in 1924
	67.0 in 1914		

Average Temperature for November 1-25, 2024 = 74.8°
 Normal Temperature for November at PGD = 70.2°

Total Rainfall for November 1-25, 2024 = 1.01 inches
 Normal Rainfall for November at PGD = 2.12 inches

Warmest Autumns	Coollest Autumns	Wettest Autumns	Driest Autumns
1 79.6 in 1948	1 72.4 in 1917	1 31.25 in 1959	1 5.37 in 2008
2 79.4 in 1986	2 73.0 in 1976	2 24.77 in 2022	2 5.75 in 1961
3 79.3 in 2020	73.0 in 1968	3 24.61 in 1922	3 5.87 in 1974
4 79.1 in 1946	4 73.5 in 1923	4 23.01 in 1962	4 5.91 in 1927
5 78.7 in 2018	5 73.7 in 1930	5 21.28 in 1953	5 5.95 in 1973
78.7 in 1985	6 73.8 in 1914	6 20.82 in 1995	6 6.00 in 1931
7 78.2 in 2023	7 73.9 in 1943	7 20.64 in 1947	7 6.22 in 1991
8 78.1 in 2015	73.9 in 1940	8 20.39 in 1924	8 6.33 in 1970
78.1 in 1947	9 74.0 in 1970	9 18.72 in 1929	9 6.62 in 1978
10 77.9 in 1960	10 74.1 in 2008	10 18.66 in 1951	10 6.82 in 1920
77.9 in 1951	74.1 in 1969		
	74.1 in 1966		

Average Temperature for Sep 1 - Nov 25, 2024 = 80.1°
 Normal Temperature for Autumn at PGD = 76.5°

Total Rainfall for Sep 1 - Nov 25, 2024 = 13.35 inches
 Normal Rainfall for Autumn at PGD = 12.01 inches

FORT MYERS AREA (records began in January 1902):

Warmest Novembers	Coollest Novembers	Wettest Novembers	Driest Novembers
1 78.3 in 1986	1 64.1 in 1917	1 8.06 in 1987	1 Trace in 2016
2 76.7 in 2015	2 64.9 in 1910	2 7.58 in 1998	Trace in 2000
3 76.6 in 2022	3 65.4 in 1956	3 5.67 in 2002	Trace in 1944
4 75.6 in 1985	4 65.7 in 1949	4 4.60 in 1921	4 0.01 in 1990
75.6 in 1948	5 65.9 in 1923	5 4.47 in 2014	5 0.02 in 1950
6 75.4 in 1994	6 66.1 in 1962	6 4.21 in 2020	6 0.03 in 1945
7 75.0 in 1946	7 66.2 in 1969	7 4.11 in 1997	7 0.04 in 1978
8 74.9 in 2020	8 66.3 in 1903	8 3.85 in 1972	8 0.06 in 1905
9 74.2 in 1978	9 66.6 in 1950	9 3.75 in 2005	9 0.08 in 1942
10 74.0 in 2017	10 66.7 in 1976	10 3.71 in 1922	10 0.09 in 2008
74.0 in 1988	66.7 in 1970		0.09 in 2007
			0.09 in 1931

Average Temperature for November 1-25, 2024 = 74.9°

Normal Temperature for November at FMY = 71.5°

Total Rainfall for November 1-25, 2024 = 2.20 inches

Normal Rainfall for November at FMY = 1.78 inches

Warmest Autumns	Coollest Autumns	Wettest Autumns	Driest Autumns
1 80.4 in 1986	1 72.5 in 1903	1 32.14 in 1922	1 5.16 in 1988
2 80.2 in 1985	2 72.7 in 1910	2 27.85 in 1969	2 5.95 in 1942
3 79.8 in 2019	3 72.9 in 1976	3 26.80 in 1924	3 5.96 in 1974
4 79.3 in 2022	4 73.7 in 1908	4 23.34 in 1947	4 5.97 in 1907
5 79.1 in 2020	5 73.8 in 1913	5 23.33 in 1953	5 6.11 in 1992
79.1 in 2015	6 74.0 in 1923	6 22.99 in 1962	6 6.12 in 1906
7 78.8 in 1979	7 74.1 in 1953	7 22.36 in 2020	7 6.31 in 2004
8 78.7 in 1994	8 74.3 in 1909	8 21.74 in 1998	8 6.50 in 1966
9 78.6 in 2018	9 74.4 in 1943	9 21.44 in 1952	9 6.67 in 1978
10 78.5 in 2021	74.4 in 1914	10 20.90 in 2011	10 6.78 in 1904
78.5 in 2007			
78.5 in 1996			
78.5 in 1990			

Average Temperature for Sep 1 - Nov 25, 2024 = 79.6°

Normal Temperature for Autumn at FMY = 77.2°

Total Rainfall for Sep 1 - Nov 25, 2024 = 20.20 inches

Normal Rainfall for Autumn at FMY = 13.86 inches

For more local climate information, please visit our web page at <https://www.weather.gov/tampabay> and look within the "Climate and Past Weather" drop down menu above the map of the area.