



# NOAA - National Weather Service

Tampa Bay Area

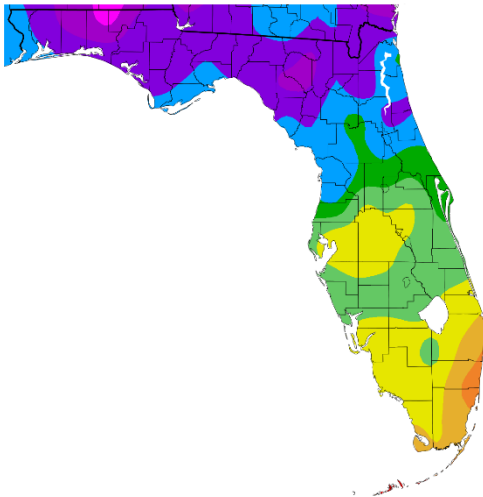
2525 14th Avenue SE, Ruskin, Florida 33570

813-645-2323 <https://weather.gov/tampabay>

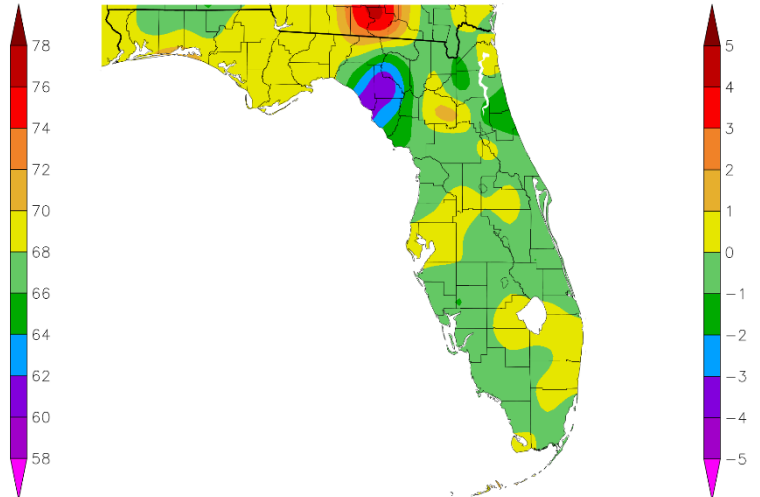
## Preliminary March 2025 Weather Summary for West Central and Southwest Florida

In March 2025 we've seen a wide range of temperatures, with a few days where temperatures averaged about 10° above normal, while there have been a few other days that were about 10° below normal. For the month so far, temperatures are averaging from about 1°F below normal to 1°F above normal across the area with none of the official locations on track to end up in the Top Ten Warmest or Coolest for March.

Temperature (F)  
3/1/2025 - 3/29/2025

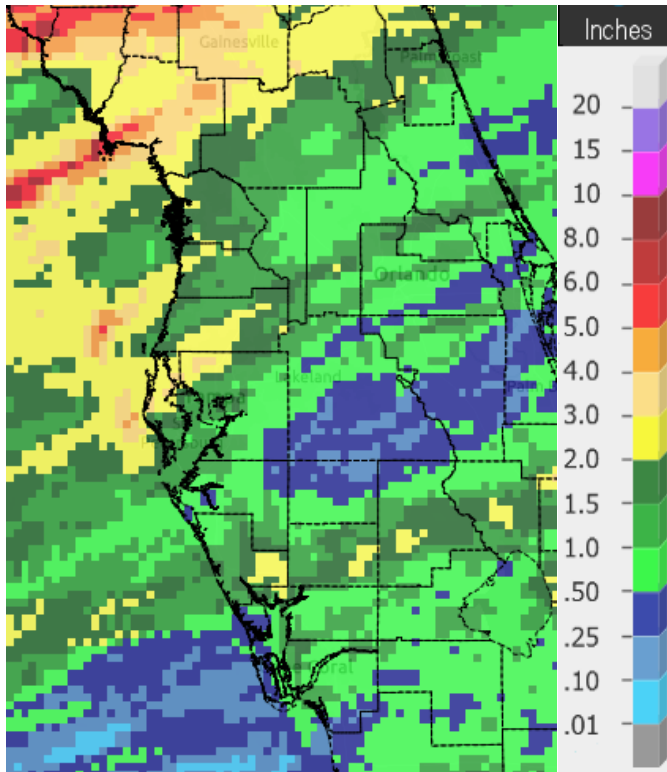


Departure from Normal Temperature (F)  
3/1/2025 - 3/29/2025

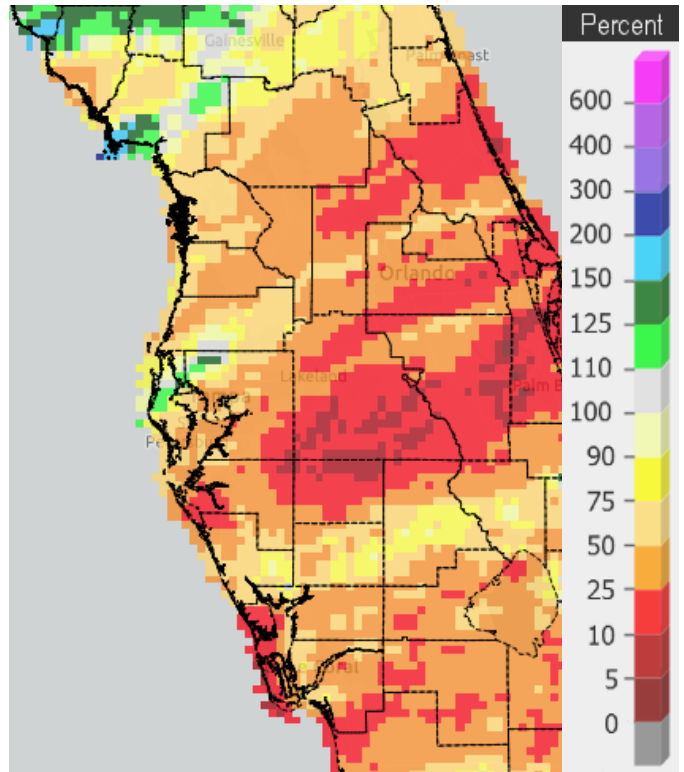


Graphics Source: High Plains Regional Climate Center (HPRCC)

As for rainfall we saw a few cold fronts move across the region, and they did bring rain to some locations, but many areas are running below normal for the month as can be seen by all the orange and red areas on the "Percent of Normal" image below right.



Rainfall March 1-29, 2025



Percent of Normal

**CHIEFLAND 5 SE** (Records began in July 1956):

Warmest Marches	Coollest Marches	Wettest Marches	Driest Marches
1 69.6 in 1997	1 55.5 in 1969	1 14.88 in 1959	1 0.06 in 2006
2 69.5 in 2020	2 56.1 in 2010	2 12.96 in 1996	2 0.15 in 2020
3 69.2 in 2015	3 57.3 in 2013	3 9.20 in 2022	3 0.63 in 2017
4 68.7 in 2012	4 57.8 in 1996	4 9.06 in 2014	4 0.69 in 2013
5 67.6 in 1973	5 59.7 in 1971	5 8.90 in 1960	5 0.71 in 1976
6 67.5 in 2003	6 59.8 in 2005	6 8.86 in 1978	6 0.74 in 2019
7 67.2 in 1977	7 60.0 in 1962	7 8.80 in 1973	7 0.95 in 2007
8 66.3 in 1976	8 60.7 in 1981	8 8.53 in 1991	8 0.99 in 1967
9 66.0 in 1982	9 60.8 in 1966	9 8.33 in 1983	9 1.26 in 2004
66.0 in 1974	10 60.9 in 2014	10 8.07 in 1992	10 1.27 in 1979

Average Temperature for March 1-29, 2025 = 61.8°

Normal Temperature for March at CHIF1 = 63.0°

Total Rainfall for March 1-29, 2025 = 3.11 inches

Normal Rainfall for March at CHIF1 = 3.81 inches

---

**INVERNESS 3 SE** (Records began in July 1948):

Warmest Marches	Coollest Marches	Wettest Marches	Driest Marches
1 70.9 in 1997	1 57.9 in 1996	1 16.00 in 1960	1 0.00 in 1956
2 70.7 in 2020	2 58.8 in 1969	2 11.13 in 1987	2 Trace in 2020
3 70.0 in 1953	3 59.5 in 2005	3 9.21 in 1959	3 0.01 in 2006
4 69.7 in 2012	4 60.1 in 1999	4 9.00 in 2010	4 0.17 in 2019
69.7 in 1976	5 60.4 in 1960	5 8.83 in 1982	5 0.56 in 2012
6 69.2 in 1974	6 60.6 in 2018	6 8.63 in 2001	6 0.57 in 2023
69.2 in 1961	7 61.2 in 1993	7 8.18 in 1964	7 0.65 in 2013
8 69.0 in 2015	8 61.8 in 1981	8 8.05 in 1958	8 0.66 in 1967
9 68.8 in 2023	9 61.9 in 1988	9 8.00 in 1996	9 0.77 in 1964
68.8 in 1963	61.9 in 1978	10 7.96 in 1983	10 0.80 in 1949

Average Temperature for March 1-28, 2025 = 62.2°

Normal Temperature for March at INV1 = 63.1

Total Rainfall for March 1-28, 2025 = 1.68 inches

Normal Rainfall for March at INV1 = 3.29 inches

**BROOKSVILLE AREA** (Records began in January 1892):

Warmest Marches	Coollest Marches	Wettest Marches	Driest Marches
1 73.0 in 1945	1 56.9 in 2010	1 17.70 in 1960	1 Trace in 1956
2 71.7 in 1935	2 57.4 in 1915	2 13.40 in 1987	2 0.02 in 2020
3 71.6 in 1938	3 57.7 in 2013	3 10.69 in 1959	3 0.04 in 2006
4 71.5 in 2020	4 59.3 in 1969	4 10.58 in 1924	4 0.07 in 2017
5 71.3 in 1974	5 59.6 in 1931	5 9.10 in 1930	5 0.10 in 1908
6 71.0 in 1929	6 60.1 in 1901	6 9.00 in 1983	6 0.12 in 2023
7 70.9 in 1948	7 60.2 in 1999	7 8.29 in 2011	7 0.15 in 1898
70.9 in 1908	8 60.3 in 1924	8 8.00 in 1991	8 0.16 in 1916
70.9 in 1897	9 60.7 in 2018	9 7.97 in 1958	9 0.17 in 2019
10 70.6 in 1939	60.7 in 1926	10 7.77 in 1982	0.17 in 1945

Average Temperature for March 1-29, 2025 = 63.8°  
Normal Temperature for March at BKV = 64.2°

Total Rainfall for March 1-29, 2025 = 0.99 inches  
Normal Rainfall for March at BKV = 2.66 inches

---

**ST LEO** (Records began in April 1895):

Warmest Marches	Coollest Marches	Wettest Marches	Driest Marches
1 72.9 in 1907	1 57.5 in 1931	1 17.91 in 1960	1 0.00 in 2020
2 72.8 in 1945	57.5 in 1915	2 16.50 in 1987	2 Trace in 1907
72.8 in 1897	3 59.2 in 1969	3 12.47 in 2011	3 0.01 in 1895
4 72.7 in 1997	4 60.0 in 2013	4 12.05 in 1959	4 0.02 in 2006
5 72.4 in 1948	5 60.2 in 2010	5 10.91 in 1924	5 0.09 in 2023
6 72.3 in 2020	6 60.6 in 1930	6 10.05 in 1900	6 0.10 in 1908
7 71.8 in 2003	7 61.1 in 1960	7 9.53 in 1930	7 0.19 in 1904
8 71.6 in 1938	8 61.5 in 1914	8 9.31 in 1958	8 0.30 in 1949
9 71.0 in 1974	9 61.6 in 1924	9 8.74 in 1983	9 0.33 in 1956
10 70.9 in 2012	10 61.9 in 1941	10 8.70 in 1988	10 0.38 in 1917

Average Temperature for March 2025 = Not Available Yet  
Normal Temperature for March at STLF1 = 66.4°

Total Rainfall for March 2025 = Not Available Yet  
Normal Rainfall for March at STLF1 = 3.18 inches

---

**TARPON SPRINGS** (Records began in January 1892):

Warmest Marches	Coollest Marches	Wettest Marches	Driest Marches
1 74.6 in 1997	1 57.5 in 1915	1 14.21 in 1987	1 0.00 in 2020
2 73.2 in 1948	2 58.3 in 1969	2 13.72 in 1960	0.00 in 1907
3 73.0 in 2020	3 59.1 in 1960	3 12.56 in 1959	3 0.02 in 2006
73.0 in 1945	4 59.4 in 2013	4 11.29 in 2011	4 0.04 in 1908
5 71.8 in 2012	5 59.7 in 1931	5 9.68 in 1983	5 0.11 in 1949
71.8 in 1903	6 60.0 in 2010	6 8.41 in 1930	6 0.12 in 2023
71.8 in 1897	7 61.3 in 1941	7 8.18 in 1900	7 0.26 in 1898
8 71.6 in 1921	8 61.5 in 1968	8 8.12 in 1996	8 0.34 in 1956
9 71.3 in 1938	9 61.6 in 1914	9 7.31 in 1947	9 0.47 in 1945
71.3 in 1929	10 61.7 in 1892	10 7.22 in 2014	10 0.53 in 1935

Average Temperature for March 1-27, 2025 = 66.1°

Normal Temperature for March at TRPF1 = 66.8°

Total Rainfall for March 1-27, 2025 = 1.33 inches

Normal Rainfall for March at TRPF1 = 3.08 inches

-----

**TAMPA AREA** (Records began in April 1890):

Warmest Marches	Coollest Marches	Wettest Marches	Driest Marches
1 74.4 in 2012	1 57.7 in 1915	1 12.64 in 1959	1 Trace in 2020
2 74.3 in 2020	2 58.1 in 1969	2 12.01 in 1987	Trace in 2006
3 73.9 in 2022	3 60.7 in 1931	3 11.00 in 1960	Trace in 1907
73.9 in 1997	4 60.9 in 1968	4 9.87 in 1930	4 0.06 in 1956
5 73.2 in 1945	5 61.6 in 2013	5 9.79 in 2011	5 0.08 in 1908
6 73.0 in 2015	61.6 in 2010	6 7.59 in 1983	0.08 in 1898
7 72.6 in 1921	7 61.7 in 1941	7 7.36 in 1900	7 0.20 in 1945
8 72.3 in 2023	8 61.9 in 1947	8 7.24 in 1924	8 0.22 in 1949
9 72.2 in 1907	9 62.0 in 1960	9 7.07 in 1931	9 0.35 in 2023
10 71.9 in 1897	62.0 in 1924	10 6.98 in 1957	0.35 in 2018
	62.0 in 1892	6.98 in 1947	

Average Temperature for March 1-29, 2025 = 69.1°

Normal Temperature for March at TPA = 68.6°

Total Rainfall for March 1-29, 2025 = 0.80 inches

Normal Rainfall for March at TPA = 2.52 inches

**ST PETERSBURG AREA** (Records began in August 1914):

Warmest Marches	Coollest Marches	Wettest Marches	Driest Marches
1 74.6 in 2012	1 59.0 in 1915	1 11.79 in 1987	1 0.00 in 2020
2 74.5 in 2020	2 61.7 in 2010	2 11.33 in 1959	2 0.03 in 1956
74.5 in 1945	3 61.9 in 1969	3 8.38 in 1931	3 0.09 in 2006
4 73.9 in 1948	4 62.4 in 1996	4 8.20 in 1983	0.09 in 1939
5 73.3 in 1997	5 62.5 in 1931	5 8.14 in 2010	5 0.11 in 2023
6 73.2 in 1921	6 63.1 in 1960	6 7.86 in 1970	6 0.19 in 1917
7 73.0 in 2015	7 63.3 in 2013	7 7.75 in 1960	7 0.24 in 1916
8 72.8 in 1976	8 63.4 in 1947	8 7.65 in 1952	8 0.31 in 2002
9 72.7 in 1918	63.4 in 1924	9 7.30 in 2011	0.31 in 1949
10 72.6 in 2003	10 63.5 in 1941	10 7.21 in 2001	10 0.37 in 1945

Average Temperature for March 1-29, 2025 = 69.1°

Normal Temperature for March at SPG = 69.0°

Total Rainfall for March 1-29, 2025 = 0.74 inches

Normal Rainfall for March at SPG = 2.58 inches

-----

**PLANT CITY** (Records began in September 1892):

Warmest Marches	Coollest Marches	Wettest Marches	Driest Marches
1 74.3 in 2020	1 56.9 in 1931	1 15.68 in 1960	1 0.00 in 1908
2 73.2 in 1907	2 59.1 in 1915	2 13.70 in 1959	0.00 in 1907
3 73.1 in 2023	3 60.3 in 1932	3 12.78 in 1987	3 0.01 in 2006
73.1 in 1997	4 60.5 in 1969	4 10.59 in 1983	4 0.02 in 2020
5 72.6 in 2015	5 60.6 in 2010	5 8.81 in 1930	5 0.08 in 1999
6 72.4 in 2022	6 61.0 in 1930	6 7.93 in 2010	6 0.19 in 2023
72.4 in 2016	61.0 in 1901	7 7.81 in 1924	7 0.21 in 1945
8 72.2 in 2024	8 61.3 in 2013	8 7.51 in 1998	8 0.32 in 1916
72.2 in 1948	9 61.4 in 1924	9 7.49 in 2011	9 0.39 in 1975
72.2 in 1945	10 61.5 in 1941	7.49 in 2001	10 0.40 in 2017

Average Temperature for March 1-29, 2025 = 69.2°

Normal Temperature for March at PLCF1 = 68.7°

Total Rainfall for March 1-29, 2025 = 0.84 inches

Normal Rainfall for March at PLCF1 = 2.78 inches

**LAKELAND AREA** (Records began in January 1915):

Warmest Marches	Coollest Marches	Wettest Marches	Driest Marches
1 73.5 in 2020	1 60.0 in 1969	1 12.94 in 1960	1 0.00 in 2020
73.5 in 1921	2 60.1 in 1915	2 12.16 in 1959	2 0.22 in 2006
3 73.4 in 1918	3 61.5 in 2010	3 10.75 in 1987	0.22 in 1916
4 72.8 in 1997	61.5 in 1960	4 9.22 in 1983	4 0.26 in 2021
72.8 in 1945	61.5 in 1931	5 8.57 in 1930	5 0.53 in 1925
6 72.7 in 2023	6 61.6 in 2013	6 8.53 in 2010	6 0.57 in 2009
72.7 in 1935	61.6 in 1941	7 8.15 in 1942	7 0.63 in 2000
8 72.6 in 1938	8 61.9 in 1924	8 7.44 in 2001	8 0.67 in 2007
9 72.2 in 2024	9 62.2 in 1947	9 7.20 in 1998	9 0.68 in 2002
10 72.1 in 2012	10 62.5 in 1968	10 6.90 in 1982	10 0.69 in 2017
72.1 in 2003			

Average Temperature for March 1-29, 2025 = 68.3°

Normal Temperature for March at LLDF1 = 68.3°

Total Rainfall for March 1-29, 2025 = 0.62 inches

Normal Rainfall for March at LLDF1 = 3.06 inches

---

**WINTER HAVEN AREA** (Records began in January 1941):

Warmest Marches	Coollest Marches	Wettest Marches	Driest Marches
1 74.6 in 2020	1 58.4 in 1969	1 12.18 in 1960	1 0.14 in 2020
2 73.5 in 2015	2 61.5 in 2013	2 10.97 in 1959	2 0.19 in 2023
73.5 in 1945	3 61.6 in 2010	3 9.61 in 1987	3 0.30 in 1956
4 73.4 in 1997	4 62.2 in 1960	4 8.31 in 2011	4 0.38 in 2006
73.4 in 1948	5 62.5 in 1968	5 7.56 in 2010	5 0.41 in 2021
6 72.8 in 2012	6 62.9 in 1981	6 7.19 in 1998	6 0.48 in 2002
7 72.5 in 2022	62.9 in 1941	7 7.16 in 1970	7 0.57 in 1945
72.5 in 2003	8 63.5 in 1996	8 6.93 in 1983	8 0.58 in 2018
9 72.0 in 2023	9 63.6 in 1983	9 6.60 in 1942	0.58 in 2017
72.0 in 1977	10 64.0 in 1947	10 6.55 in 1969	10 0.60 in 2000

Average Temperature for March 1-29, 2025 = 68.3°

Normal Temperature for March at GIF = 69.1°

Total Rainfall for March 1-29, 2025 = 0.33 inches

Normal Rainfall for March at GIF = 3.04 inches

**BARTOW** (Records began in June 1892):

Warmest Marches	Coollest Marches	Wettest Marches	Driest Marches
1 76.1 in 2015	1 60.8 in 1914	1 11.53 in 1959	1 0.00 in 2020
2 74.6 in 1903	2 61.5 in 1969	2 10.25 in 1987	2 0.02 in 1908
3 74.0 in 1997	3 62.3 in 2010	3 8.99 in 1960	3 0.05 in 1945
4 73.3 in 2003	4 62.5 in 1901	4 8.57 in 1944	4 0.07 in 2023
5 73.2 in 1948	5 62.7 in 1947	5 8.12 in 2001	5 0.10 in 2006
6 72.6 in 2012	6 62.9 in 1960	6 8.10 in 1947	6 0.27 in 2021
7 72.5 in 1945	7 63.5 in 1996	7 7.72 in 1930	7 0.36 in 2002
72.5 in 1907	63.5 in 1968	8 7.28 in 2010	8 0.41 in 1999
72.5 in 1897	9 63.9 in 2018	9 7.11 in 1970	9 0.45 in 2007
10 72.3 in 2020	10 64.0 in 1983	10 7.00 in 1983	10 0.46 in 1897

Average Temperature for March 2025 = Not Available Yet

Normal Temperature for March at BARF1 = 67.7°

Total Rainfall for March 2025 = Not Available Yet

Normal Rainfall for March at BARF1 = 2.84 inches

-----

**SARASOTA-BRADENTON AREA** (Records began in January 1911):

Warmest Marches	Coollest Marches	Wettest Marches	Driest Marches
1 73.1 in 2020	1 57.0 in 1915	1 11.10 in 1987	1 Trace in 1939
2 73.0 in 2012	2 59.3 in 1931	2 10.77 in 2001	2 0.10 in 1945
3 72.6 in 1997	3 60.4 in 2010	3 10.60 in 1958	3 0.18 in 2023
4 71.9 in 2024	4 60.7 in 1969	4 8.81 in 1959	4 0.21 in 1949
71.9 in 2003	5 60.8 in 2013	5 8.63 in 1983	5 0.26 in 1956
71.9 in 1948	6 61.7 in 1924	6 8.49 in 2011	6 0.28 in 2007
7 71.7 in 2022	61.7 in 1914	7 8.16 in 1998	7 0.34 in 1935
8 71.6 in 2023	8 62.0 in 1941	8 7.42 in 1982	8 0.37 in 1976
9 71.5 in 2015	62.0 in 1916	9 7.37 in 1969	9 0.44 in 1917
10 71.1 in 1921	10 62.6 in 1968	10 7.10 in 1970	10 0.47 in 2004

Average Temperature for March 1-29, 2025 = 68.1°

Normal Temperature for March at SRQ = 68.1°

Total Rainfall for March 1-29, 2025 = 0.50 inches

Normal Rainfall for March at SRQ = 2.85 inches

-----



**VENICE** (Records began in April 1955):

Warmest Marches	Coollest Marches	Wettest Marches	Driest Marches
1 74.4 in 1997	1 61.6 in 1969	1 11.21 in 1987	1 0.00 in 2020
2 74.0 in 2012	2 62.8 in 2013	2 9.57 in 1983	2 0.05 in 2023
3 73.8 in 2003	3 62.9 in 1960	3 9.38 in 1998	3 0.10 in 1956
4 72.5 in 2023	4 63.2 in 1968	4 8.83 in 2010	4 0.14 in 2009
5 72.2 in 2015	5 63.3 in 1962	5 8.05 in 1970	5 0.19 in 1971
6 72.1 in 2022	6 63.4 in 2010	6 7.74 in 1959	6 0.33 in 1977
7 72.0 in 2024	63.4 in 1981	7 7.45 in 2011	7 0.36 in 2006
8 71.7 in 2020	8 63.9 in 1978	8 7.41 in 2001	8 0.39 in 1967
9 70.8 in 2016	9 64.3 in 1996	9 7.10 in 1969	9 0.40 in 1974
70.8 in 2000	64.3 in 1988	10 6.60 in 1958	10 0.53 in 2004
	64.3 in 1958		

Average Temperature for March 1-29, 2025 = 67.1°

Normal Temperature for March at VNCF1 = 67.7°

Total Rainfall for March 1-29, 2025 = 0.82 inches

Normal Rainfall for March at VNCF1 = 2.97 inches

-----

**MYAKKA RIVER STATE PARK** (Temperature records began in March 1956  
and Rainfall records began in Sep 1943):

Warmest Marches	Coollest Marches	Wettest Marches	Driest Marches
1 74.5 in 2003	1 60.5 in 2013	1 12.88 in 1987	1 0.08 in 1956
2 74.2 in 1997	2 61.4 in 2010	2 12.24 in 1998	2 0.13 in 2006
3 72.6 in 2015	3 62.4 in 1960	3 9.74 in 1969	3 0.16 in 1945
4 71.9 in 2012	4 63.7 in 1971	4 8.80 in 1959	4 0.18 in 2023
5 71.6 in 1977	5 64.4 in 1996	5 8.21 in 1958	5 0.23 in 2020
6 71.3 in 2016	64.4 in 1959	6 7.81 in 1983	0.23 in 1966
71.3 in 1976	7 64.8 in 1958	7 7.54 in 2010	7 0.29 in 2002
8 71.2 in 1992	8 65.2 in 1981	8 7.51 in 2011	0.29 in 1977
9 71.0 in 1982	9 65.4 in 2018	9 7.35 in 2001	9 0.41 in 1953
10 70.5 in 1995	10 65.7 in 1962	10 7.04 in 1947	10 0.42 in 1949
	65.7 in 1957		

Average Temperature for March 2025 = Not Available Yet

Normal Temperature for March at MKCF1 = 67.9°

Total Rainfall for March 2025 = Not Available Yet

Normal Rainfall for March at MKCF1 = 3.00 inches

**WAUCHULA 2 N** (Records began in January 1933):

Warmest Marches		Coolest Marches		Wettest Marches		Driest Marches	
1	72.9 in 1948	1	57.7 in 2013	1	12.14 in 1998	1	0.00 in 2020
2	72.6 in 2003	2	61.3 in 1969	2	9.22 in 1959		0.00 in 2002
3	72.0 in 1974	3	62.3 in 2018	3	7.72 in 1958	3	0.08 in 1967
	72.0 in 1945	4	62.5 in 1996	4	7.03 in 1987	4	0.12 in 2023
5	71.7 in 1938	5	62.7 in 1960	5	6.98 in 2001	5	0.18 in 1945
6	71.6 in 1939	6	63.4 in 1947	6	6.85 in 1965	6	0.20 in 1935
7	71.5 in 1935	7	63.5 in 1999	7	6.76 in 1947	7	0.22 in 2012
8	71.2 in 1977		63.5 in 1968	8	6.55 in 1983	8	0.30 in 2006
9	70.9 in 1997	9	63.6 in 1941	9	6.53 in 1969		0.30 in 1974
	70.9 in 1973	10	63.7 in 1983	10	5.80 in 1970	10	0.35 in 1976

Average Temperature for March 2025 = Not Available Yet  
Normal Temperature for March at WAUF1 = 66.2°

Total Rainfall for March 2025 = Not Available Yet  
Normal Rainfall for March at WAUF1 = 2.99 inches

-----  
**ARCHBOLD BIO STN** (Records began in January 1969):

Warmest Marches		Coolest Marches		Wettest Marches		Driest Marches	
1	73.1 in 2003	1	58.6 in 2010	1	10.20 in 2010	1	0.05 in 2020
2	72.6 in 1997	2	58.8 in 2013	2	8.85 in 1970		0.05 in 1974
3	72.3 in 2015	3	61.1 in 1969	3	7.52 in 2003	3	0.06 in 2002
4	71.0 in 2024	4	62.2 in 1996	4	7.43 in 1969	4	0.22 in 2004
5	70.8 in 2022		62.2 in 1983	5	6.61 in 1987	5	0.50 in 2023
6	70.6 in 2016	6	62.9 in 2018	6	6.52 in 1982	6	0.66 in 2007
	70.6 in 1977	7	63.2 in 1999	7	6.42 in 1984	7	0.76 in 1999
	70.6 in 1974	8	63.3 in 1981	8	6.21 in 1988	8	0.78 in 1972
9	70.2 in 2012	9	63.8 in 1998	9	6.03 in 1986	9	0.83 in 2021
10	70.0 in 2023	10	63.9 in 1971	10	5.74 in 1993	10	0.87 in 2006
	70.0 in 2020						
	70.0 in 1976						

Average Temperature for March 2025 = Not Available Yet  
Normal Temperature for March at ACHF1 = 67.1°

Total Rainfall for March 2025 = Not Available Yet  
Normal Rainfall for March at ACHF1 = 2.87 inches

**PUNTA GORDA AREA** (Records began in May 1914):

Warmest Marches	Coollest Marches	Wettest Marches	Driest Marches
1 74.9 in 1948	1 57.9 in 1915	1 9.91 in 1947	1 0.00 in 1956
2 74.8 in 1945	2 62.0 in 2010	2 9.26 in 1970	2 Trace in 2020
3 73.7 in 1997	3 62.1 in 1916	3 8.71 in 2010	Trace in 1920
4 73.5 in 2024	4 62.3 in 1969	4 8.18 in 1987	4 0.09 in 2007
5 73.0 in 1953	62.3 in 1931	5 7.64 in 1930	5 0.10 in 1945
6 72.9 in 2003	6 62.4 in 2013	6 7.23 in 1960	0.10 in 1935
7 72.5 in 2023	7 63.5 in 1941	7 6.43 in 1958	7 0.15 in 1967
8 72.4 in 2015	8 64.2 in 1968	8 6.34 in 1969	8 0.16 in 1938
9 72.3 in 1944	9 64.3 in 1924	9 6.14 in 1983	9 0.21 in 1923
72.3 in 1968	10 64.7 in 1971	10 5.84 in 1959	10 0.28 in 2006

Average Temperature for March 1-29, 2025 = 67.3°

Normal Temperature for March at PGD = 68.5°

Total Rainfall for March 1-29, 2025 = 0.70 inches

Normal Rainfall for March at PGD = 2.28 inches

-----

**FORT MYERS AREA** (Records began in January 1902):

Warmest Marches	Coollest Marches	Wettest Marches	Driest Marches
1 75.9 in 1997	1 61.1 in 1915	1 18.58 in 1970	1 0.00 in 1935
2 75.8 in 2022	2 62.4 in 1931	2 10.31 in 1958	2 0.02 in 2020
3 75.4 in 2020	3 63.0 in 2010	3 8.94 in 1947	3 0.03 in 1974
4 75.3 in 2023	4 63.4 in 1969	4 7.78 in 1903	4 0.04 in 1939
5 74.8 in 2003	5 63.7 in 1941	5 7.41 in 1983	5 0.05 in 1956
6 74.6 in 2015	6 64.3 in 2013	6 7.21 in 2010	6 0.08 in 1907
7 74.4 in 1948	7 64.4 in 1914	7 6.88 in 1941	7 0.09 in 1977
8 74.3 in 2012	8 64.5 in 1960	8 6.64 in 1931	8 0.10 in 2023
9 73.6 in 2024	9 64.6 in 1968	9 6.59 in 2005	0.10 in 1945
10 73.2 in 1921	10 65.0 in 1926	10 6.38 in 1984	10 0.13 in 2007
			0.13 in 1949

Average Temperature for March 1-29, 2025 = 70.1°

Normal Temperature for March at FMY = 70.3°

Total Rainfall for March 1-29, 2025 = 0.61 inches

Normal Rainfall for March at FMY = 2.07 inches

-----

For more Climate information visit our web site at the following link:  
<https://www.weather.gov/tampabay> and then go to the Climate and Past  
Weather drop down menu above the graphical forecast images.