



# NOAA - National Weather Service

Tampa Bay Area

2525 14th Avenue SE, Ruskin, Florida 33570

813-645-2323 <https://weather.gov/tampabay>

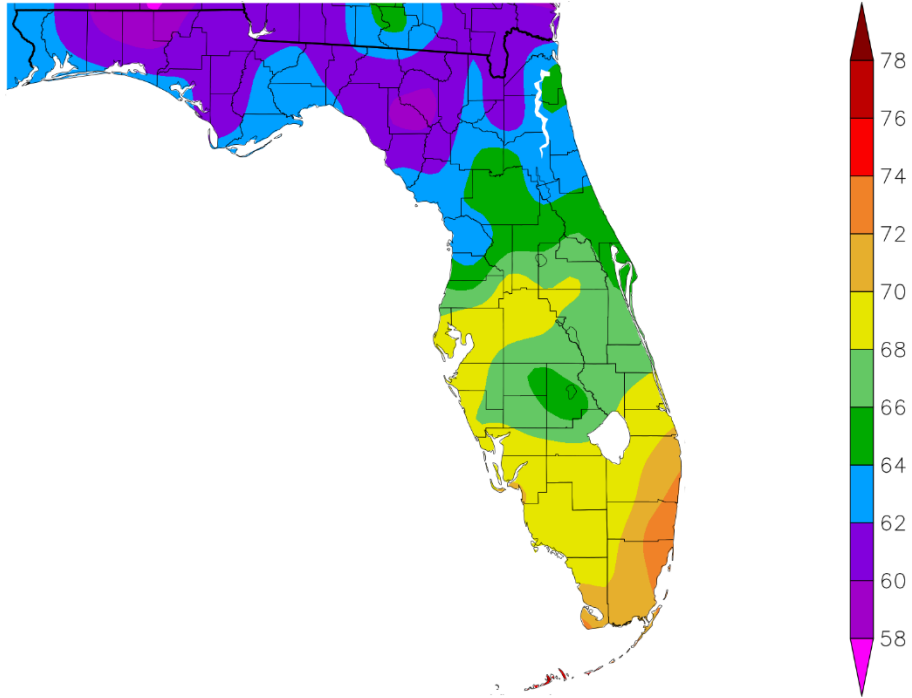
## March 2025 Weather Summary for West Central and Southwest Florida

In March 2025 we saw a wide range of temperatures, with a few days where temperatures averaged about 10° above normal, while there were a few other days that were about 10° below normal. For the month, temperatures averaged from about 2°F below normal to 1°F above normal across the area with none of the official locations ending up in the Top Ten Warmest or Coolest for March.

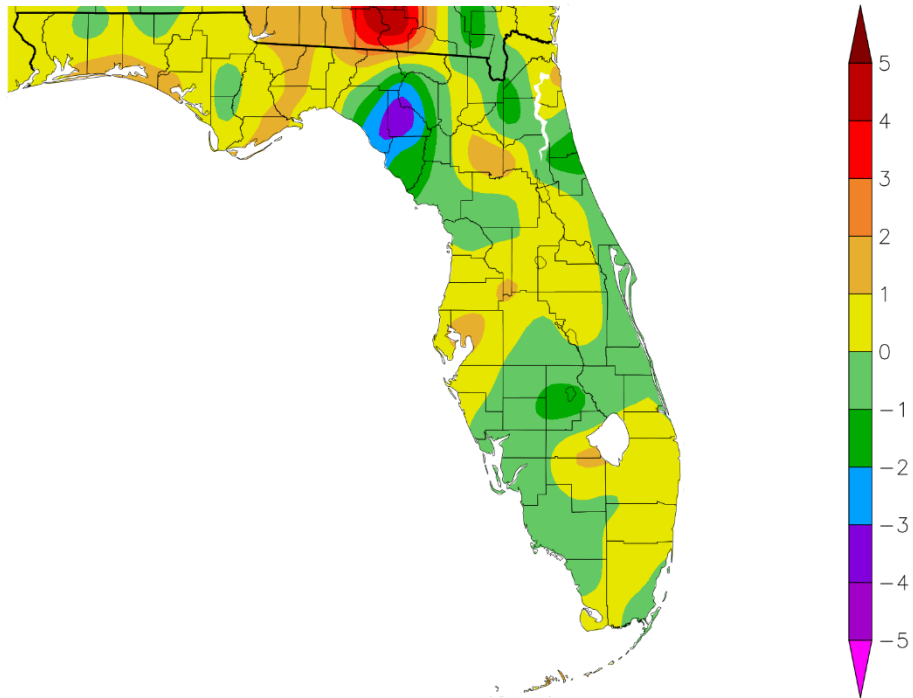
### MARCH TEMPERATURE RANKINGS (°F) :

Location	Rank	March 2025 Avg Temp	Normal Mar Temp	Dep fm Normal	Records Began
Fort Myers Area	53rd Warmest (tie)	70.7°	70.3°	+0.4°	Jan 1902
Plant City	28th Warmest	69.9°	68.7°	+1.2°	Jan 1893
Tampa Area	33rd Warmest	69.7°	68.6°	+1.1°	Apr 1890
St Petersburg Area	44th Warmest	69.5°	69.0°	+0.5°	Aug 1914
Lakeland Area	41st Warmest	69.2°	68.3°	+0.9°	Jan 1915
Winter Haven Area	35th Coolest (tie)	68.9°	69.1°	-0.2°	Mar 1941
Sarasota-Bradenton Area	37th Warmest (tie)	68.7°	68.1°	+0.6°	Jan 1911
Punta Gorda Area	41st Coolest (tie)	68.0°	68.5°	-0.5°	May 1914
Venice	35th Warmest	67.8°	67.7°	+0.1°	May 1955
Tarpon Springs	58th Warmest (tie)	67.3°	66.8°	+0.5°	Jan 1892
St. Leo	64th Warmest (tie)	67.2°	66.4°	+0.8°	Apr 1895
Bartow	33rd Coolest	67.1°	67.7°	-0.6°	Jun 1892
Wauchula	25th Coolest	65.8°	66.2°	-0.4°	Jan 1933
Archbold Bio Stn	18th Coolest	64.9°	67.1°	-2.2°	Jan 1969
Brooksville Area	81st Warmest (tie)	64.6°	64.2°	+0.4°	Jan 1892
Inverness 3 SE	17th Coolest	63.0°	63.1°	-0.1°	Jul 1948
Chiefland 5 ESE	23rd Coolest	62.0°	63.0°	-1.0°	Jul 1956

Temperature (F)  
3/1/2025 – 3/31/2025



Departure from Normal Temperature (F)  
3/1/2025 – 3/31/2025

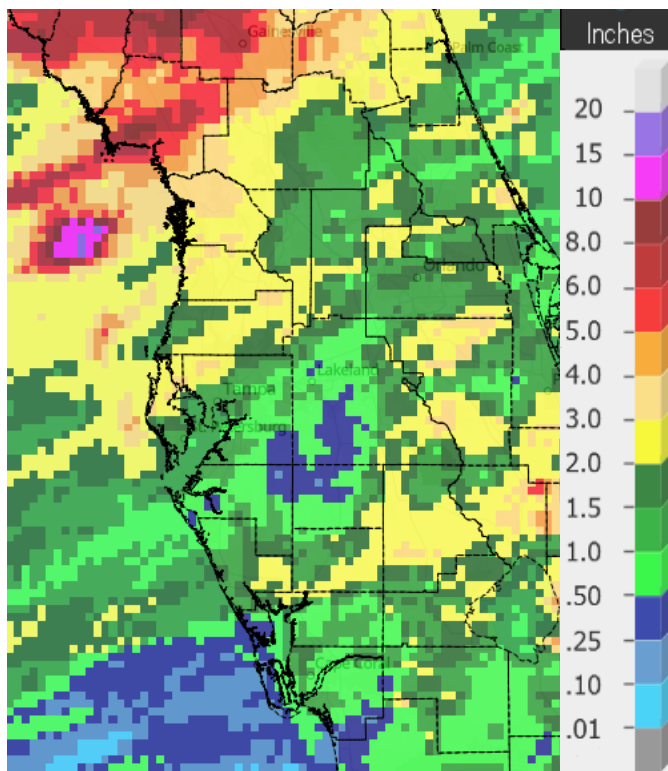


Graphics Source: High Plains Regional Climate Center (HPRCC)

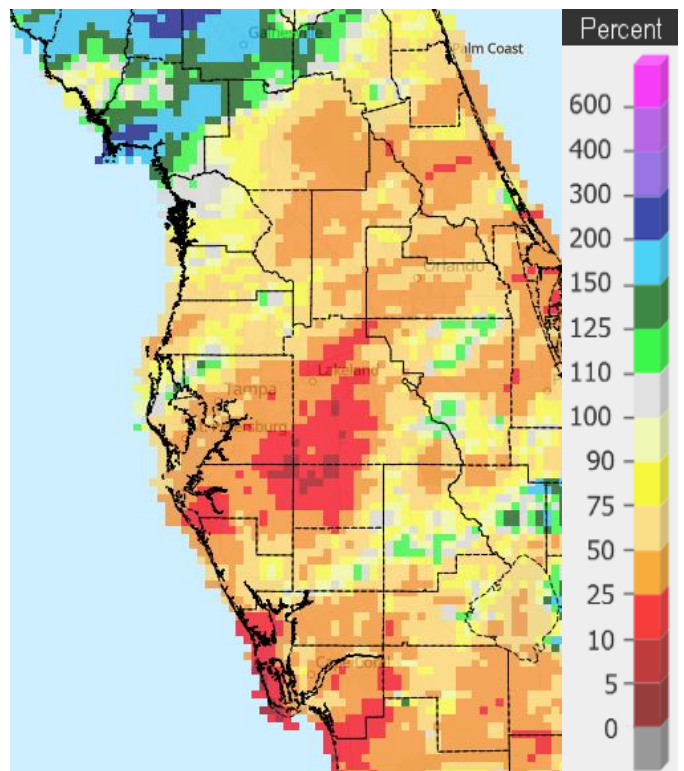
As for rainfall we saw a few cold fronts move across the region, and they did bring rain to some locations, but most areas, except Levy County, ended up below normal for the month as can be seen by all the orange and red areas on the "Percent of Normal" image below right.

**MARCH RAINFALL (inches):**

Location	Rank	March 2025 Rain Total	Normal Apr Rain	Dep fm Normal	Records Began
Chiefland 5 ESE	13th Wettest	7.21	3.81	+3.40	Jul 1956
Inverness 3SE	40th Driest	3.05	3.29	-0.24	Jul 1948
Brooksville Area	55th Driest	2.11	2.66	-0.55	Jun 1892
St. Leo	45th Driest	1.90	3.18	-1.28	Apr 1895
Archbold Bio Stn	26th Driest	1.88	2.87	-0.99	Jan 1969
Tarpon Springs	52nd Driest	1.79	3.08	-1.29	Jan 1892
Tampa Area	29th Driest (tie)	0.98	2.52	-1.54	Apr 1890
Punta Gorda Area	30th Driest	0.86	2.28	-1.42	May 1914
Plant City	22nd Driest	0.84	2.78	-1.94	Jan 1893
Venice	18th Driest	0.83	2.97	-2.14	Apr 1955
St. Petersburg Area	23rd Driest (tie)	0.78	2.58	-1.80	Aug 1914
Lakeland Area	7th Driest (tie)	0.63	3.06	-2.43	Jan 1915
Fort Myers Area	34th Driest	0.61	2.07	-1.46	Jan 1902
Sarasota-Bradenton Area	16th Driest	0.58	2.85	-2.27	Jan 1911
Wauchula	12th Driest	0.54	2.99	-2.45	Jan 1933
Winter Haven Area	4th Driest	0.34	3.04	-2.70	Mar 1941
Bartow	6th Driest	0.12	2.84	-2.72	Jun 1892



Rainfall March 2025



Percent of Normal

**CHIEFLAND 5 SE** (Records began in July 1956):

Warmest Marches	Coollest Marches	Wettest Marches	Driest Marches
1 69.6 in 1997	1 55.5 in 1969	1 14.88 in 1959	1 0.06 in 2006
2 69.5 in 2020	2 56.1 in 2010	2 12.96 in 1996	2 0.15 in 2020
3 69.2 in 2015	3 57.3 in 2013	3 9.20 in 2022	3 0.63 in 2017
4 68.7 in 2012	4 57.8 in 1996	4 9.06 in 2014	4 0.69 in 2013
5 67.6 in 1973	5 59.7 in 1971	5 8.90 in 1960	5 0.71 in 1976
6 67.5 in 2003	6 59.8 in 2005	6 8.86 in 1978	6 0.74 in 2019
7 67.2 in 1977	7 60.0 in 1962	7 8.80 in 1973	7 0.95 in 2007
8 66.3 in 1976	8 60.7 in 1981	8 8.53 in 1991	8 0.99 in 1967
9 66.0 in 1982	9 60.8 in 1966	9 8.33 in 1983	9 1.26 in 2004
66.0 in 1974	10 60.9 in 2014	10 8.07 in 1992	10 1.27 in 1979
...	...	11 7.90 in 1957	
<b>39 62.0 in 2025</b>	<b>23 62.0 in 2025</b>	12 7.84 in 2008	
		<b>13 7.21 in 2025</b>	

Normal Temperature for March at CHIF1 = 63.0°

Normal Rainfall for March at CHIF1 = 3.81 inches

---

**INVERNESS 3 SE** (Records began in July 1948):

Warmest Marches	Coollest Marches	Wettest Marches	Driest Marches
1 70.9 in 1997	1 57.9 in 1996	1 16.00 in 1960	1 0.00 in 1956
2 70.7 in 2020	2 58.8 in 1969	2 11.13 in 1987	2 Trace in 2020
3 70.0 in 1953	3 59.5 in 2005	3 9.21 in 1959	3 0.01 in 2006
4 69.7 in 2012	4 60.1 in 1999	4 9.00 in 2010	4 0.17 in 2019
69.7 in 1976	5 60.4 in 1960	5 8.83 in 1982	5 0.56 in 2012
6 69.2 in 1974	6 60.6 in 2018	6 8.63 in 2001	6 0.57 in 2023
69.2 in 1961	7 61.2 in 1993	7 8.18 in 1964	7 0.65 in 2013
8 69.0 in 2015	8 61.8 in 1981	8 8.05 in 1958	8 0.66 in 1967
9 68.8 in 2023	9 61.9 in 1988	9 8.00 in 1996	9 0.77 in 1964
68.8 in 1963	61.9 in 1978	10 7.96 in 1983	10 0.80 in 1949
	...	...	...
	<b>17 63.0 in 2025</b>	<b>37 3.05 in 2025</b>	<b>40 3.05 in 2025</b>

Normal Temperature for March at INVF1 = 63.1

Normal Rainfall for March at INVF1 = 3.29 inches

---

**BROOKSVILLE AREA** (Records began in January 1892):

Warmest Marches	Coollest Marches	Wettest Marches	Driest Marches
1 73.0 in 1945	1 56.9 in 2010	1 17.70 in 1960	1 Trace in 1956
2 71.7 in 1935	2 57.4 in 1915	2 13.40 in 1987	2 0.02 in 2020
3 71.6 in 1938	3 57.7 in 2013	3 10.69 in 1959	3 0.04 in 2006
4 71.5 in 2020	4 59.3 in 1969	4 10.58 in 1924	4 0.07 in 2017
5 71.3 in 1974	5 59.6 in 1931	5 9.10 in 1930	5 0.10 in 1908
6 71.0 in 1929	6 60.1 in 1901	6 9.00 in 1983	6 0.12 in 2023
7 70.9 in 1948	7 60.2 in 1999	7 8.29 in 2011	7 0.15 in 1898
70.9 in 1908	8 60.3 in 1924	8 8.00 in 1991	8 0.16 in 1916
70.9 in 1897	9 60.7 in 2018	9 7.97 in 1958	9 0.17 in 2019
10 70.6 in 1939	60.7 in 1926	10 7.77 in 1982	0.17 in 1945
...	...	...	...
<b>81 64.6 in 2025</b>	<b>39 64.6 in 2025</b>	<b>76 2.11 in 2025</b>	<b>55 2.11 in 2025</b>
64.6 in 2009	64.6 in 2009		

Normal Temperature for March at BKV = 64.2°  
Normal Rainfall for March at BKV = 2.66 inches

---

**ST LEO** (Records began in April 1895):

Warmest Marches	Coollest Marches	Wettest Marches	Driest Marches
1 72.9 in 1907	1 57.5 in 1931	1 17.91 in 1960	1 0.00 in 2020
2 72.8 in 1945	57.5 in 1915	2 16.50 in 1987	2 Trace in 1907
72.8 in 1897	3 59.2 in 1969	3 12.47 in 2011	3 0.01 in 1895
4 72.7 in 1997	4 60.0 in 2013	4 12.05 in 1959	4 0.02 in 2006
5 72.4 in 1948	5 60.2 in 2010	5 10.91 in 1924	5 0.09 in 2023
6 72.3 in 2020	6 60.6 in 1930	6 10.05 in 1900	6 0.10 in 1908
7 71.8 in 2003	7 61.1 in 1960	7 9.53 in 1930	7 0.19 in 1904
8 71.6 in 1938	8 61.5 in 1914	8 9.31 in 1958	8 0.30 in 1949
9 71.0 in 1974	9 61.6 in 1924	9 8.74 in 1983	9 0.33 in 1956
10 70.9 in 2012	10 61.9 in 1941	10 8.70 in 1988	10 0.38 in 1917
...	...	...	...
<b>64 67.2 in 2025</b>	<b>64 67.2 in 2025</b>	<b>87 1.90 in 2025</b>	<b>45 1.90 in 2025</b>
67.2 in 1951	67.2 in 1951		
67.2 in 1902	67.2 in 1902		

Normal Temperature for March at STLF1 = 66.4°  
Normal Rainfall for March at STLF1 = 3.18 inches

**TARPON SPRINGS** (Records began in January 1892):

Warmest Marches		Coolest Marches		Wettest Marches		Driest Marches	
1	74.6 in 1997	1	57.5 in 1915	1	14.21 in 1987	1	0.00 in 2020
2	73.2 in 1948	2	58.3 in 1969	2	13.72 in 1960		0.00 in 1907
3	73.0 in 2020	3	59.1 in 1960	3	12.56 in 1959	3	0.02 in 2006
	73.0 in 1945	4	59.4 in 2013	4	11.29 in 2011	4	0.04 in 1908
5	71.8 in 2012	5	59.7 in 1931	5	9.68 in 1983	5	0.11 in 1949
	71.8 in 1903	6	60.0 in 2010	6	8.41 in 1930	6	0.12 in 2023
	71.8 in 1897	7	61.3 in 1941	7	8.18 in 1900	7	0.26 in 1898
8	71.6 in 1921	8	61.5 in 1968	8	8.12 in 1996	8	0.34 in 1956
9	71.3 in 1938	9	61.6 in 1914	9	7.31 in 1947	9	0.47 in 1945
	71.3 in 1929	10	61.7 in 1892	10	7.22 in 2014	10	0.53 in 1935
...		...		...		...	
<b>58</b>	<b>67.3 in 2025</b>	<b>71</b>	<b>67.3 in 2025</b>	<b>82</b>	<b>1.79 in 2025</b>	<b>52</b>	<b>1.79 in 2025</b>
	67.3 in 1951		67.3 in 1951				

Normal Temperature for March at TRPF1 = 66.8°

Normal Rainfall for March at TRPF1 = 3.08 inches

**TAMPA AREA** (Records began in April 1890):

Warmest Marches		Coolest Marches		Wettest Marches		Driest Marches	
1	74.4 in 2012	1	57.7 in 1915	1	12.64 in 1959	1	Trace in 2020
2	74.3 in 2020	2	58.1 in 1969	2	12.01 in 1987		Trace in 2006
3	73.9 in 2022	3	60.7 in 1931	3	11.00 in 1960		Trace in 1907
	73.9 in 1997	4	60.9 in 1968	4	9.87 in 1930	4	0.06 in 1956
5	73.2 in 1945	5	61.6 in 2013	5	9.79 in 2011	5	0.08 in 1908
6	73.0 in 2015		61.6 in 2010	6	7.59 in 1983		0.08 in 1898
7	72.6 in 1921	7	61.7 in 1941	7	7.36 in 1900	7	0.20 in 1945
8	72.3 in 2023	8	61.9 in 1947	8	7.24 in 1924	8	0.22 in 1949
9	72.2 in 1907	9	62.0 in 1960	9	7.07 in 1931	9	0.35 in 2023
10	71.9 in 1897		62.0 in 1924	10	6.98 in 1957		0.35 in 2018
			62.0 in 1892		6.98 in 1947		
...		...		...		...	
<b>33</b>	<b>69.7 in 2025</b>	<b>103</b>	<b>69.7 in 2025</b>	<b>106</b>	<b>0.98 in 2025</b>	<b>29</b>	<b>0.98 in 2025</b>
					0.98 in 2009		0.98 in 2009

Normal Temperature for March at TPA = 68.6°

Normal Rainfall for March at TPA = 2.52 inches

**ST PETERSBURG AREA** (Records began in August 1914):

Warmest Marches		Coolest Marches		Wettest Marches		Driest Marches	
1	74.6 in 2012	1	59.0 in 1915	1	11.79 in 1987	1	0.00 in 2020
2	74.5 in 2020	2	61.7 in 2010	2	11.33 in 1959	2	0.03 in 1956
	74.5 in 1945	3	61.9 in 1969	3	8.38 in 1931	3	0.09 in 2006
4	73.9 in 1948	4	62.4 in 1996	4	8.20 in 1983		0.09 in 1939
5	73.3 in 1997	5	62.5 in 1931	5	8.14 in 2010	5	0.11 in 2023
6	73.2 in 1921	6	63.1 in 1960	6	7.86 in 1970	6	0.19 in 1917
7	73.0 in 2015	7	63.3 in 2013	7	7.75 in 1960	7	0.24 in 1916
8	72.8 in 1976	8	63.4 in 1947	8	7.65 in 1952	8	0.31 in 2002
9	72.7 in 1918		63.4 in 1924	9	7.30 in 2011		0.31 in 1949
10	72.6 in 2003	10	63.5 in 1941	10	7.21 in 2001	10	0.37 in 1945
...		...				...	
<b>44</b>	<b>69.5 in 2025</b>	<b>65</b>	<b>69.5 in 2025</b>			<b>23</b>	<b>0.78 in 2025</b>
							0.78 in 2019

Normal Temperature for March at SPG = 69.0°  
 Normal Rainfall for March at SPG = 2.58 inches

**PLANT CITY** (Records began in September 1892):

Warmest Marches		Coolest Marches		Wettest Marches		Driest Marches	
1	74.3 in 2020	1	56.9 in 1931	1	15.68 in 1960	1	0.00 in 1908
2	73.2 in 1907	2	59.1 in 1915	2	13.70 in 1959		0.00 in 1907
3	73.1 in 2023	3	60.3 in 1932	3	12.78 in 1987	3	0.01 in 2006
	73.1 in 1997	4	60.5 in 1969	4	10.59 in 1983	4	0.02 in 2020
5	72.6 in 2015	5	60.6 in 2010	5	8.81 in 1930	5	0.08 in 1999
6	72.4 in 2022	6	61.0 in 1930	6	7.93 in 2010	6	0.19 in 2023
	72.4 in 2016		61.0 in 1901	7	7.81 in 1924	7	0.21 in 1945
8	72.2 in 2024	8	61.3 in 2013	8	7.51 in 1998	8	0.32 in 1916
	72.2 in 1948	9	61.4 in 1924	9	7.49 in 2011	9	0.39 in 1975
	72.2 in 1945	10	61.5 in 1941		7.49 in 2001	10	0.40 in 2017
...						...	
<b>28</b>	<b>69.9 in 2025</b>					<b>22</b>	<b>0.84 in 2025</b>

Normal Temperature for March at PLCF1 = 68.7°  
 Normal Rainfall for March at PLCF1 = 2.78 inches

**LAKELAND AREA** (Records began in January 1915):

Warmest Marches	Coollest Marches	Wettest Marches	Driest Marches
1 73.5 in 2020	1 60.0 in 1969	1 12.94 in 1960	1 0.00 in 2020
73.5 in 1921	2 60.1 in 1915	2 12.16 in 1959	2 0.22 in 2006
3 73.4 in 1918	3 61.5 in 2010	3 10.75 in 1987	0.22 in 1916
4 72.8 in 1997	61.5 in 1960	4 9.22 in 1983	4 0.26 in 2021
72.8 in 1945	61.5 in 1931	5 8.57 in 1930	5 0.53 in 1925
6 72.7 in 2023	6 61.6 in 2013	6 8.53 in 2010	6 0.57 in 2009
72.7 in 1935	61.6 in 1941	7 8.15 in 1942	<b>7 0.63 in 2025</b>
8 72.6 in 1938	8 61.9 in 1924	8 7.44 in 2001	0.63 in 2000
9 72.2 in 2024	9 62.2 in 1947	9 7.20 in 1998	9 0.67 in 2007
10 72.1 in 2012	10 62.5 in 1968	10 6.90 in 1982	10 0.68 in 2002
72.1 in 2003			
...	...		
<b>41 69.2 in 2025</b>	<b>70 69.2 in 2025</b>		

Normal Temperature for March at LLDF1 = 68.3°

Normal Rainfall for March at LLDF1 = 3.06 inches

-----

**WINTER HAVEN AREA** (Records began in January 1941):

Warmest Marches	Coollest Marches	Wettest Marches	Driest Marches
1 74.6 in 2020	1 58.4 in 1969	1 12.18 in 1960	1 0.14 in 2020
2 73.5 in 2015	2 61.5 in 2013	2 10.97 in 1959	2 0.19 in 2023
73.5 in 1945	3 61.6 in 2010	3 9.61 in 1987	3 0.30 in 1956
4 73.4 in 1997	4 62.2 in 1960	4 8.31 in 2011	<b>4 0.34 in 2025</b>
73.4 in 1948	5 62.5 in 1968	5 7.56 in 2010	5 0.38 in 2006
6 72.8 in 2012	6 62.9 in 1981	6 7.19 in 1998	6 0.41 in 2021
7 72.5 in 2022	62.9 in 1941	7 7.16 in 1970	7 0.48 in 2002
72.5 in 2003	8 63.5 in 1996	8 6.93 in 1983	8 0.57 in 1945
9 72.0 in 2023	9 63.6 in 1983	9 6.60 in 1942	9 0.58 in 2018
72.0 in 1977	10 64.0 in 1947	10 6.55 in 1969	0.58 in 2017
...	...		
<b>43 68.9 in 2025</b>	<b>35 68.9 in 2025</b>		
68.9 in 2017	68.9 in 2017		
68.9 in 1994	68.9 in 1994		

Normal Temperature for March at GIF = 69.1°

Normal Rainfall for March at GIF = 3.04 inches



**BARTOW** (Records began in June 1892):

Warmest Marches	Coollest Marches	Wettest Marches	Driest Marches
1 76.1 in 2015	1 60.8 in 1914	1 11.53 in 1959	1 0.00 in 2020
2 74.6 in 1903	2 61.5 in 1969	2 10.25 in 1987	2 0.02 in 1908
3 74.0 in 1997	3 62.3 in 2010	3 8.99 in 1960	3 0.05 in 1945
4 73.3 in 2003	4 62.5 in 1901	4 8.57 in 1944	4 0.07 in 2023
5 73.2 in 1948	5 62.7 in 1947	5 8.12 in 2001	5 0.10 in 2006
6 72.6 in 2012	6 62.9 in 1960	6 8.10 in 1947	<b>6 0.12 in 2025</b>
7 72.5 in 1945	7 63.5 in 1996	7 7.72 in 1930	7 0.27 in 2021
72.5 in 1907	63.5 in 1968	8 7.28 in 2010	8 0.36 in 2002
72.5 in 1897	9 63.9 in 2018	9 7.11 in 1970	9 0.41 in 1999
10 72.3 in 2020	10 64.0 in 1983	10 7.00 in 1983	10 0.45 in 2007
...	...		
<b>69 67.1 in 2025</b>	<b>33 67.1 in 2025</b>		

Normal Temperature for March at BARF1 = 67.7°

Normal Rainfall for March at BARF1 = 2.84 inches

-----

**SARASOTA-BRADENTON AREA** (Records began in January 1911):

Warmest Marches	Coollest Marches	Wettest Marches	Driest Marches
1 73.1 in 2020	1 57.0 in 1915	1 11.10 in 1987	1 Trace in 1939
2 73.0 in 2012	2 59.3 in 1931	2 10.77 in 2001	2 0.10 in 1945
3 72.6 in 1997	3 60.4 in 2010	3 10.60 in 1958	3 0.18 in 2023
4 71.9 in 2024	4 60.7 in 1969	4 8.81 in 1959	4 0.21 in 1949
71.9 in 2003	5 60.8 in 2013	5 8.63 in 1983	5 0.26 in 1956
71.9 in 1948	6 61.7 in 1924	6 8.49 in 2011	6 0.28 in 2007
7 71.7 in 2022	61.7 in 1914	7 8.16 in 1998	7 0.34 in 1935
8 71.6 in 2023	8 62.0 in 1941	8 7.42 in 1982	8 0.37 in 1976
9 71.5 in 2015	62.0 in 1916	9 7.37 in 1969	9 0.44 in 1917
10 71.1 in 1921	10 62.6 in 1968	10 7.10 in 1970	10 0.47 in 2004
...	...		11 0.48 in 2017
<b>37 68.7 in 2025</b>	<b>72 68.7 in 2025</b>		12 0.52 in 1977
68.7 in 2019	68.7 in 2019		0.52 in 1920
68.7 in 1994	68.7 in 1994		14 0.55 in 1918
68.7 in 1975	68.7 in 1975		15 0.56 in 1953
68.7 in 1967	68.7 in 1967		<b>16 0.58 in 2025</b>

Normal Temperature for March at SRQ = 68.1°

Normal Rainfall for March at SRQ = 2.85 inches

**VENICE** (Records began in April 1955):

Warmest Marches		Coolest Marches		Wettest Marches		Driest Marches	
1	74.4 in 1997	1	61.6 in 1969	1	11.21 in 1987	1	0.00 in 2020
2	74.0 in 2012	2	62.8 in 2013	2	9.57 in 1983	2	0.05 in 2023
3	73.8 in 2003	3	62.9 in 1960	3	9.38 in 1998	3	0.10 in 1956
4	72.5 in 2023	4	63.2 in 1968	4	8.83 in 2010	4	0.14 in 2009
5	72.2 in 2015	5	63.3 in 1962	5	8.05 in 1970	5	0.19 in 1971
6	72.1 in 2022	6	63.4 in 2010	6	7.74 in 1959	6	0.33 in 1977
7	72.0 in 2024		63.4 in 1981	7	7.45 in 2011	7	0.36 in 2006
8	71.7 in 2020	8	63.9 in 1978	8	7.41 in 2001	8	0.39 in 1967
9	70.8 in 2016	9	64.3 in 1996	9	7.10 in 1969	9	0.40 in 1974
	70.8 in 2000		64.3 in 1988	10	6.60 in 1958	10	0.53 in 2004
			64.3 in 1958			...	
...		...				<b>18</b>	<b>0.83 in 2025</b>
<b>35</b>	<b>67.8 in 2025</b>	<b>31</b>	<b>67.8 in 2025</b>				

Normal Temperature for March at VNCF1 = 67.7°  
 Normal Rainfall for March at VNCF1 = 2.97 inches

**MYAKKA RIVER STATE PARK** (Temperature records began in March 1956  
 and Rainfall records began in Sep 1943):

Warmest Marches		Coolest Marches		Wettest Marches		Driest Marches	
1	74.5 in 2003	1	60.5 in 2013	1	12.88 in 1987	1	0.08 in 1956
2	74.2 in 1997	2	61.4 in 2010	2	12.24 in 1998	2	0.13 in 2006
3	72.6 in 2015	3	62.4 in 1960	3	9.74 in 1969	3	0.16 in 1945
4	71.9 in 2012	4	63.7 in 1971	4	8.80 in 1959	4	0.18 in 2023
5	71.6 in 1977	5	64.4 in 1996	5	8.21 in 1958	5	0.23 in 2020
6	71.3 in 2016		64.4 in 1959	6	7.81 in 1983		0.23 in 1966
	71.3 in 1976	7	64.8 in 1958	7	7.54 in 2010	7	0.29 in 2002
8	71.2 in 1992	8	65.2 in 1981	8	7.51 in 2011		0.29 in 1977
9	71.0 in 1982	9	65.4 in 2018	9	7.35 in 2001	9	0.41 in 1953
10	70.5 in 1995	10	65.7 in 1962	10	7.04 in 1947	10	0.42 in 1949
			65.7 in 1957				

Average Temperature for March 2025 = Not Available Yet  
 Normal Temperature for March at MKCF1 = 67.9°

Total Rainfall for March 2025 = Not Available Yet  
 Normal Rainfall for March at MKCF1 = 3.00 inches

**WAUCHULA** (Records began in January 1933):

Warmest Marches		Coolest Marches		Wettest Marches		Driest Marches	
1	72.9 in 1948	1	57.7 in 2013	1	12.14 in 1998	1	0.00 in 2020
2	72.6 in 2003	2	61.3 in 1969	2	9.22 in 1959		0.00 in 2002
3	72.0 in 1974	3	62.3 in 2018	3	7.72 in 1958	3	0.08 in 1967
	72.0 in 1945	4	62.5 in 1996	4	7.03 in 1987	4	0.12 in 2023
5	71.7 in 1938	5	62.7 in 1960	5	6.98 in 2001	5	0.18 in 1945
6	71.6 in 1939	6	63.4 in 1947	6	6.85 in 1965	6	0.20 in 1935
7	71.5 in 1935	7	63.5 in 1999	7	6.76 in 1947	7	0.22 in 2012
8	71.2 in 1977		63.5 in 1968	8	6.55 in 1983	8	0.30 in 2006
9	70.9 in 1997	9	63.6 in 1941	9	6.53 in 1969		0.30 in 1974
	70.9 in 1973	10	63.7 in 1983	10	5.80 in 1970	10	0.35 in 1976
...		...				11	0.48 in 2021
<b>33</b>	<b>65.8 in 2025</b>	<b>25</b>	<b>65.8 in 2025</b>			<b>12</b>	<b>0.54 in 2025</b>

Normal Temperature for March at WAUF1 = 66.2°  
 Normal Rainfall for March at WAUF1 = 2.99 inches

**ARCHBOLD BIO STN** (Records began in January 1969):

Warmest Marches		Coolest Marches		Wettest Marches		Driest Marches	
1	73.1 in 2003	1	58.6 in 2010	1	10.20 in 2010	1	0.05 in 2020
2	72.6 in 1997	2	58.8 in 2013	2	8.85 in 1970		0.05 in 1974
3	72.3 in 2015	3	61.1 in 1969	3	7.52 in 2003	3	0.06 in 2002
4	71.0 in 2024	4	62.2 in 1996	4	7.43 in 1969	4	0.22 in 2004
5	70.8 in 2022		62.2 in 1983	5	6.61 in 1987	5	0.50 in 2023
6	70.6 in 2016	6	62.9 in 2018	6	6.52 in 1982	6	0.66 in 2007
	70.6 in 1977	7	63.2 in 1999	7	6.42 in 1984	7	0.76 in 1999
	70.6 in 1974	8	63.3 in 1981	8	6.21 in 1988	8	0.78 in 1972
9	70.2 in 2012	9	63.8 in 1998	9	6.03 in 1986	9	0.83 in 2021
10	70.0 in 2023	10	63.9 in 1971	10	5.74 in 1993	10	0.87 in 2006
	70.0 in 2020	11	64.0 in 1993			...	
	70.0 in 1976	12	64.2 in 1979			<b>26</b>	<b>1.88 in 2025</b>
		13	64.4 in 2005				
		14	64.5 in 1984				
			64.5 in 1978				
		16	64.7 in 1986				
		17	64.8 in 1988				
		<b>18</b>	<b>64.9 in 2025</b>				

Normal Temperature for March at ACHF1 = 67.1°  
 Normal Rainfall for March at ACHF1 = 2.87 inches

**PUNTA GORDA AREA** (Records began in May 1914):

Warmest Marches		Coolest Marches		Wettest Marches		Driest Marches	
1	74.9 in 1948	1	57.9 in 1915	1	9.91 in 1947	1	0.00 in 1956
2	74.8 in 1945	2	62.0 in 2010	2	9.26 in 1970	2	Trace in 2020
3	73.7 in 1997	3	62.1 in 1916	3	8.71 in 2010		Trace in 1920
4	73.5 in 2024	4	62.3 in 1969	4	8.18 in 1987	4	0.09 in 2007
5	73.0 in 1953		62.3 in 1931	5	7.64 in 1930	5	0.10 in 1945
6	72.9 in 2003	6	62.4 in 2013	6	7.23 in 1960		0.10 in 1935
7	72.5 in 2023	7	63.5 in 1941	7	6.43 in 1958	7	0.15 in 1967
8	72.4 in 2015	8	64.2 in 1968	8	6.34 in 1969	8	0.16 in 1938
9	72.3 in 1944	9	64.3 in 1924	9	6.14 in 1983	9	0.21 in 1923
	72.3 in 1968	10	64.7 in 1971	10	5.84 in 1959	10	0.28 in 2006
...		...		...		...	
<b>64</b>	<b>68.0 in 2025</b>	<b>41</b>	<b>68.0 in 2025</b>	<b>77</b>	<b>0.86 in 2025</b>	<b>30</b>	<b>0.86 in 2025</b>
	68.0 in 2017		68.0 in 2017				

Normal Temperature for March at PGD = 68.5°  
 Normal Rainfall for March at PGD = 2.28 inches

**FORT MYERS AREA** (Records began in January 1902):

Warmest Marches		Coolest Marches		Wettest Marches		Driest Marches	
1	75.9 in 1997	1	61.1 in 1915	1	18.58 in 1970	1	0.00 in 1935
2	75.8 in 2022	2	62.4 in 1931	2	10.31 in 1958	2	0.02 in 2020
3	75.4 in 2020	3	63.0 in 2010	3	8.94 in 1947	3	0.03 in 1974
4	75.3 in 2023	4	63.4 in 1969	4	7.78 in 1903	4	0.04 in 1939
5	74.8 in 2003	5	63.7 in 1941	5	7.41 in 1983	5	0.05 in 1956
6	74.6 in 2015	6	64.3 in 2013	6	7.21 in 2010	6	0.08 in 1907
7	74.4 in 1948	7	64.4 in 1914	7	6.88 in 1941	7	0.09 in 1977
8	74.3 in 2012	8	64.5 in 1960	8	6.64 in 1931	8	0.10 in 2023
9	73.6 in 2024	9	64.6 in 1968	9	6.59 in 2005		0.10 in 1945
10	73.2 in 1921	10	65.0 in 1926	10	6.38 in 1984	10	0.13 in 2007
...		...		...		...	0.13 in 1949
<b>53</b>	<b>70.7 in 2025</b>	<b>71</b>	<b>70.7 in 2025</b>	...		...	
	70.7 in 1994		70.7 in 1994	<b>91</b>	<b>0.61 in 2025</b>	<b>34</b>	<b>0.61 in 2025</b>

Normal Temperature for March at FMY = 70.3°  
 Normal Rainfall for March at FMY = 2.07 inches

For more Climate information visit our web site at the following link:  
<https://www.weather.gov/tampabay> and then go to the Climate and Past  
 Weather drop down menu above the graphical forecast images.