



NOAA - National Weather Service

Tampa Bay Area

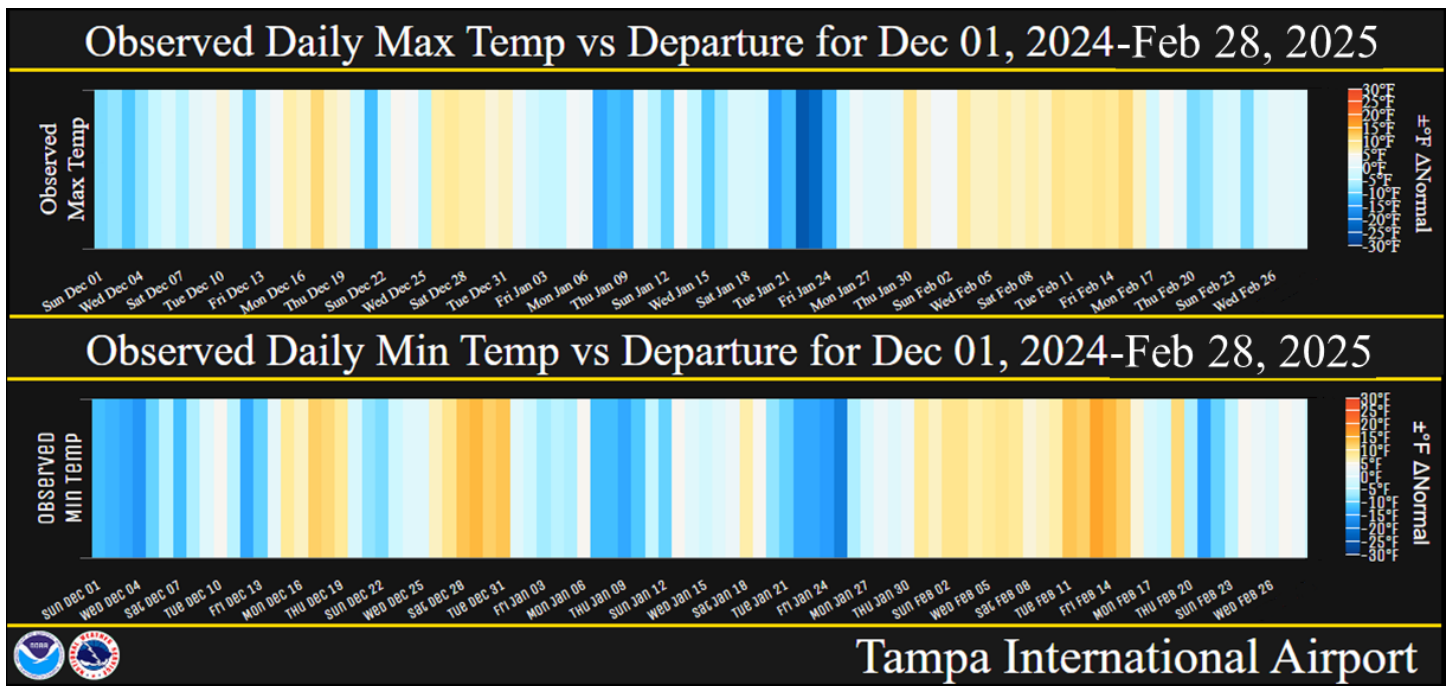
2525 14th Avenue SE, Ruskin, Florida 33570

813-645-2323 <https://weather.gov/tampabay>

February 2025 and Winter 2024-25 Summary

The ENSO (El Niño Southern Oscillation) switched to a weak La Niña this winter which usually means we'll see overall temperatures slightly above normal for the season while rainfall will be below normal. This overall pattern was accurate as far as precipitation, but as for temperatures we ended up seeing temperatures slightly below to slightly above normal. There were large swings in temperatures during the winter with some rather chilly days where temperatures were 10 to 20 degrees below normal while others were 10 to 15 degrees above normal. This February temperatures averaged about 3.5 to 7 degrees above normal, with several sites in the Top 10 Warmest. Meanwhile for the winter (Dec/Jan/Feb) temperatures averaged from about 1.5 degrees below normal to about 1.5 degrees above normal.

The various ups and downs in the temperatures this past winter can be seen in the observed daily maximum and minimum temperatures for Tampa in the graphic below. The orange areas are the days with well above normal temperatures while the blue are days with well below normal temperatures.



Below are temperature tables for February and the Winter (Dec/Jan/Feb) at sites available at this time.

FEBRUARY TEMPERATURE RANKINGS (°F)

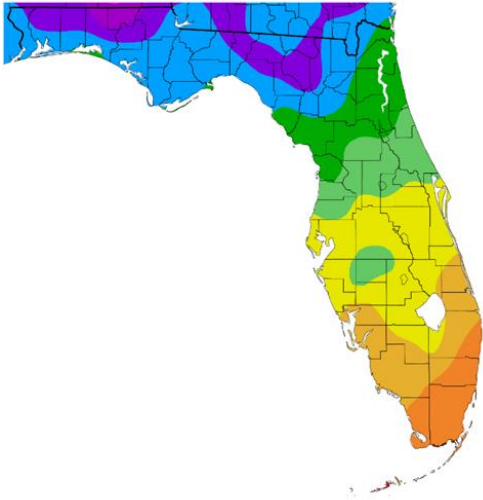
Location	February 2025 Rank	Avg Temp	Normal Feb Temp	Dep fm Normal	Records Began
Fort Myers Area	6th Warmest	72.1°	67.3°	+4.8°	Jan 1902
Punta Gorda Area	5th Warmest (tie)	70.8°	65.5°	+5.3°	Jul 1914
Plant City	4th Warmest (tie)	70.6°	65.3°	+5.3°	Sep 1892
Winter Haven Area	6th Warmest (tie)	69.7°	65.1°	+4.6°	Mar 1941
Lakeland Area	9th Warmest	69.7°	65.0°	+4.7°	Jan 1915
Sarasota-Bradenton Area	7th Warmest	69.3°	64.8°	+4.5°	Jan 1911
Bartow	11th Warmest	69.3°	64.0°	+5.3°	Jun 1892
Venice	8th Warmest	69.2°	64.6°	+4.6°	May 1955
Tampa Area	11th Warmest (tie)	68.6°	64.7°	+3.9°	Apr 1890
Wauchula	13th Warmest	68.6°	62.9°	+5.7°	Jan 1933
St Petersburg Area	17th Warmest	68.5°	64.9°	+3.6°	Aug 1914
St. Leo	16th Warmest (tie)	67.3°	62.6°	+4.7°	Apr 1895
Tarpon Springs	21st Warmest (tie)	66.3°	62.9°	+3.4°	Jan 1892
Inverness 3 SE	9th Warmest (tie)	65.7°	58.9°	+6.8°	Jul 1948
Brooksville Area	21st Warmest	65.6°	60.6°	+5.0°	Jan 1892
Chiefland 5 ESE	14th Warmest	62.0°	58.5°	+3.5°	Jul 1956

WINTER (DEC/JAN/FEB) TEMPERATURE RANKINGS (°F) :

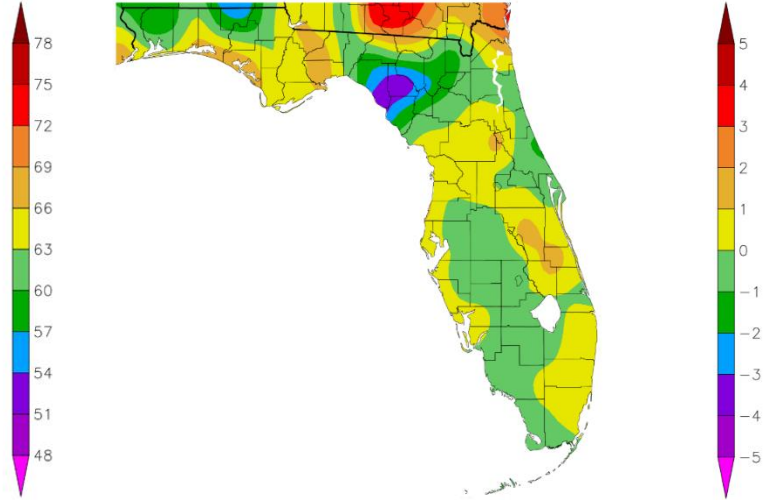
Location	Winter 2024-25 Rank	Avg Temp	Normal Temp	Dep fm Normal	Records Began
Fort Myers Area	32nd Warmest (tie)	66.9°	66.4°	+0.5°	Jan 1902
Punta Gorda Area	29th Warmest (tie)	66.2°	64.8°	+1.4°	Jul 1914
Sarasota-Bradenton Area	30th Warmest (tie)	64.6°	64.1°	+0.5°	Jan 1911
Venice	22nd Warmest (tie)	64.1°	63.8°	+0.3°	May 1955
Lakeland Area	43rd Coolest (tie)	63.7°	64.0°	-0.3°	Jan 1915
Winter Haven Area	33rd Coolest	63.6°	64.0°	-0.6°	Mar 1941
Tampa Area	92nd Coolest	63.4°	63.9°	-0.5°	Apr 1890
St Petersburg Area	41st Coolest (tie)	63.4°	64.1°	-0.7°	Aug 1914
Plant City	73rd Coolest (tie)	63.3°	64.2°	-0.9°	Sep 1892
Bartow	36th Coolest (tie)	62.6°	63.0°	-0.4°	Jun 1892
Wauchula	48th Warmest	62.4°	62.0°	+0.4°	Jan 1933
Tarpon Springs	55th Coolest (tie)	61.7°	61.8°	-0.1°	Jan 1892
St. Leo	52nd Coolest (tie)	61.3°	61.5°	-0.2°	Apr 1895
Inverness 3 SE	32nd Warmest	59.0°	58.0°	+1.0°	Jul 1948
Brooksville Area	36th Coolest (tie)	59.0°	59.5°	-0.5°	Jan 1892
Chiefland 5 ESE	22nd Coolest (tie)	55.7°	57.1°	-1.4°	Jul 1956

Below are graphics that depict the monthly average temperature and departure from normal temperature (based on the 1991-2020 Normals) across the area.

Temperature (F)
12/1/2024 - 12/31/2024

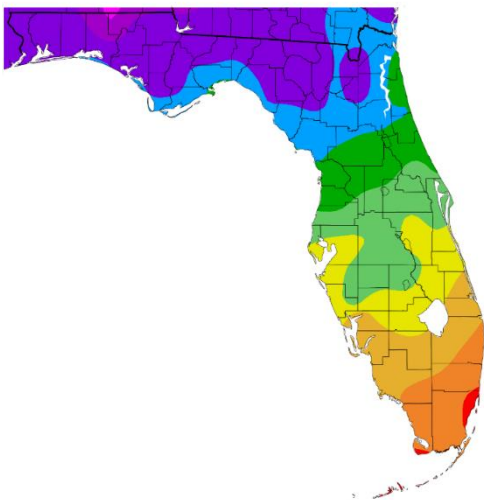


Departure from Normal Temperature (F)
12/1/2024 - 12/31/2024

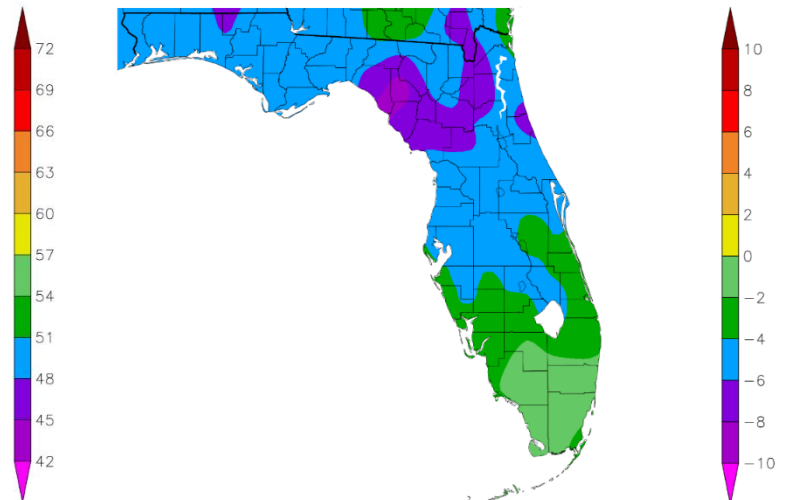


December 2024

Temperature (F)
1/1/2025 - 1/31/2025



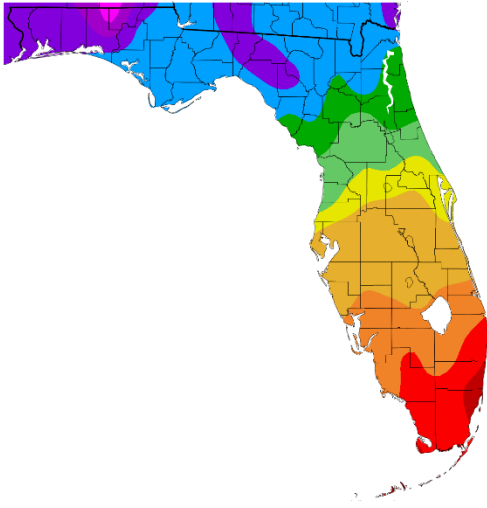
Departure from Normal Temperature (F)
1/1/2025 - 1/31/2025



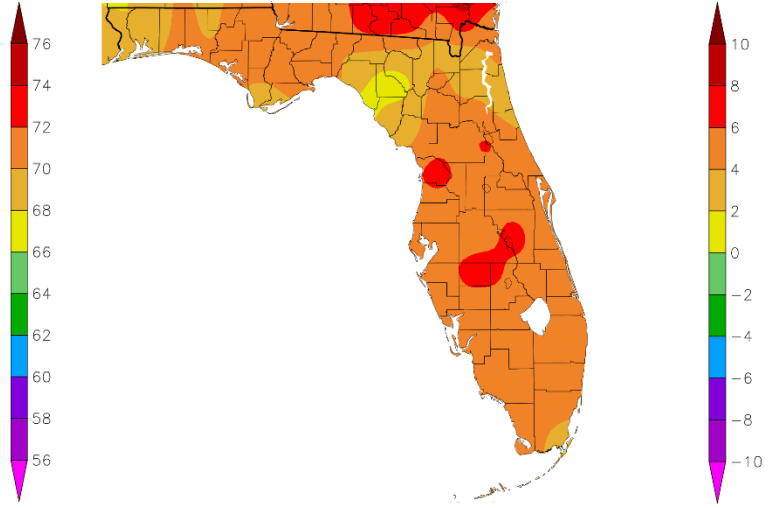
January 2025

Graphics Source: High Plains Regional Climate Center (HPRCC)

Temperature (F)
2/1/2025 - 2/28/2025

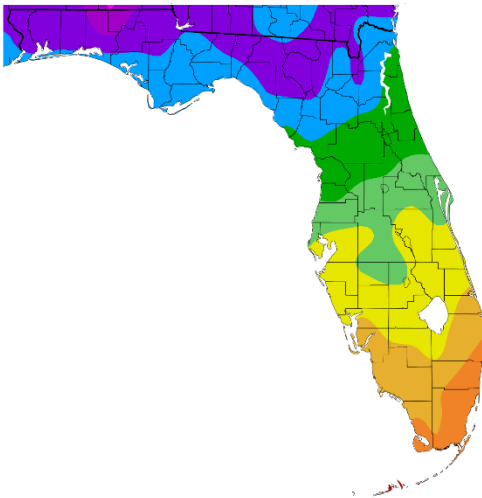


Departure from Normal Temperature (F)
2/1/2025 - 2/28/2025

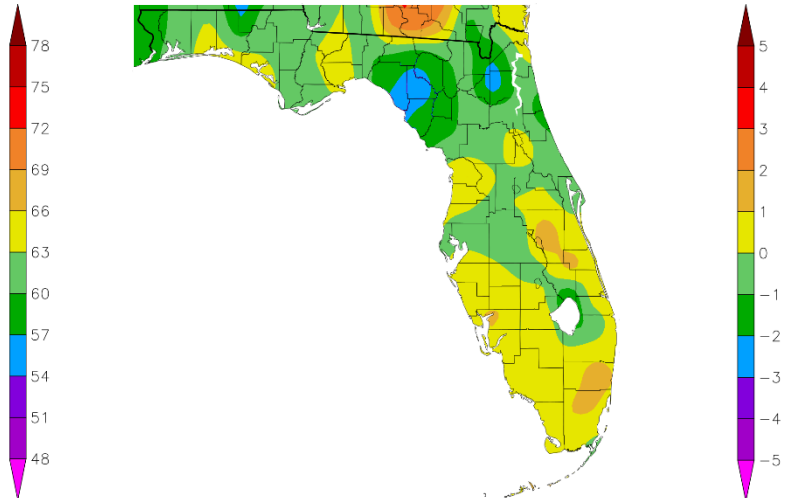


February 2025

Temperature (F)
12/1/2024 - 2/28/2025



Departure from Normal Temperature (F)
12/1/2024 - 2/28/2025



Winter 2024-2025

Graphics Source: High Plains Regional Climate Center (HPRCC)

As for rainfall this February, areas across the central peninsula have seen near to above normal rainfall, while much of the Nature Coast is well below normal. Meanwhile, for the Winter 2024-2025 so far, we've pretty much seen below normal rainfall across the region, except a small area near Interstate 4.

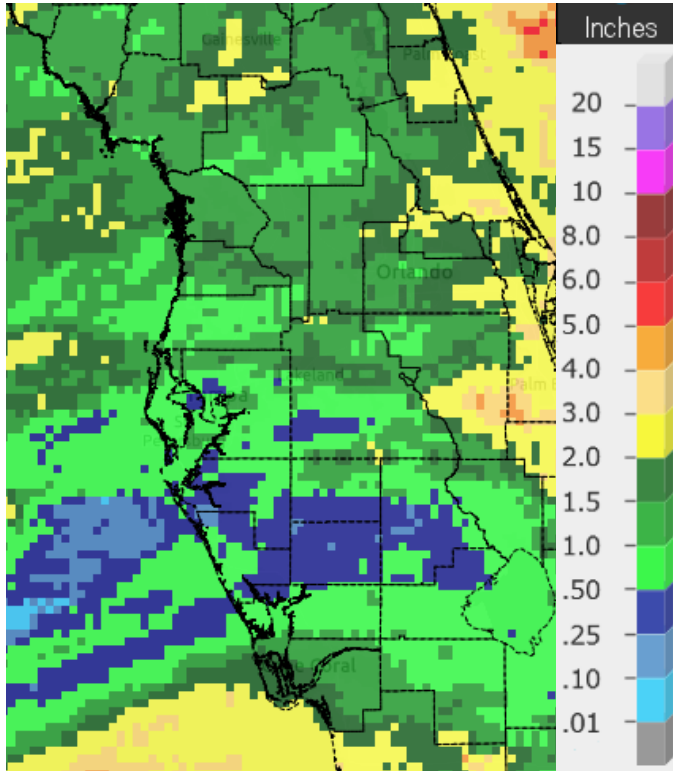
FEBRUARY RAINFALL (inches):

Location	February 2025 Rank	Rain Total	Normal Feb Rain	Dep fm Normal	Records Began
Sarasota-Bradenton Area	39th Wettest (tie)	3.05	1.92	+1.13	Jan 1911
Lakeland Area	39th Wettest	2.95	2.33	+0.62	Jan 1915
Tampa Area	57th Wettest	2.85	2.62	+0.23	Apr 1890
Chiefland 5 ESE	33rd Driest	2.78	3.25	-0.47	Jul 1956
St. Petersburg Area	48th Wettest	2.42	2.02	+0.40	Aug 1914
Wauchula	41st Wettest	2.42	2.18	+0.24	Jan 1933
Winter Haven Area	46st Driest (tie)	2.22	2.44	-0.22	Mar 1941
Bartow	64th Driest (tie)	2.09	2.10	-0.01	Jun 1892
Plant City	56th Driest (tie)	2.07	2.33	-0.26	Sep 1892
Venice	35th Driest	1.92	2.00	-0.08	May 1955
Fort Myers Area	66th Driest	1.69	1.78	-0.09	Jan 1902
Tarpon Springs	41st Driest	1.68	2.51	-0.83	Jan 1892
St. Leo	43rd Driest	1.55	2.38	-0.83	Apr 1895
Brooksville Area	29th Driest	1.31	2.57	-1.26	Jan 1892
Punta Gorda Area	39th Driest	1.22	2.47	-1.25	May 1914
Inverness 3 SE	7th Driest	0.90	2.69	-1.79	Jul 1948

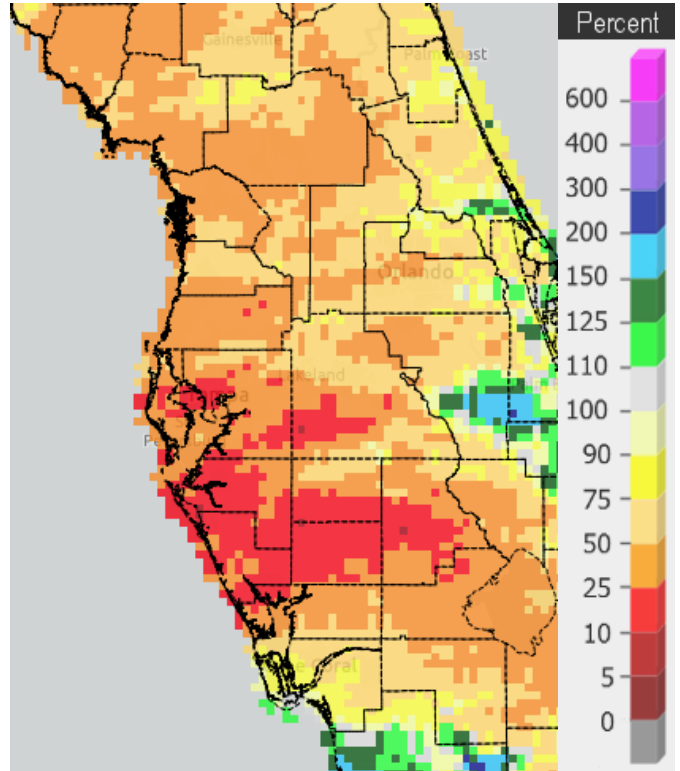
WINTER (DEC/JAN/FEB) RAINFALL (inches):

Location	Winter 2024-25 Rank	Rain Total	Normal Rain	Dep fm Normal	Records Began
Chiefland 5 ESE	20th Driest	7.19	10.11	-2.92	Jul 1956
Tampa Area	71st Driest	6.80	7.83	-1.03	Apr 1890
Lakeland Area	50th Driest	6.27	7.93	-1.66	Jan 1915
Winter Haven Area	41st Driest	6.20	7.61	-1.41	Mar 1941
Tarpon Springs	36th Driest	5.56	8.28	-2.72	Jan 1892
Plant City	40th Driest	5.35	7.87	-2.52	Sep 1892
Wauchula	31st Driest	5.12	6.60	-1.48	Jan 1933
St. Petersburg Area	25th Driest	4.34	6.93	-2.59	Aug 1914
Venice	21st Driest	4.33	6.99	-2.66	May 1955
Sarasota-Bradenton Area	27th Driest	4.31	7.04	-2.73	Jan 1911
Bartow	31st Driest	4.28	6.92	-2.64	Jun 1892
St. Leo	12th Driest	3.70	7.97	-4.27	Apr 1895
Fort Myers Area	45th Driest	3.64	6.11	-2.47	Jan 1902
Inverness 3 SE	6th Driest	3.48	8.14	-4.66	Jul 1948
Brooksville Area	10th Driest	3.30	8.14	-4.84	Jan 1892
Punta Gorda Area	21st Driest (tie)	2.98	6.78	-3.80	May 1914

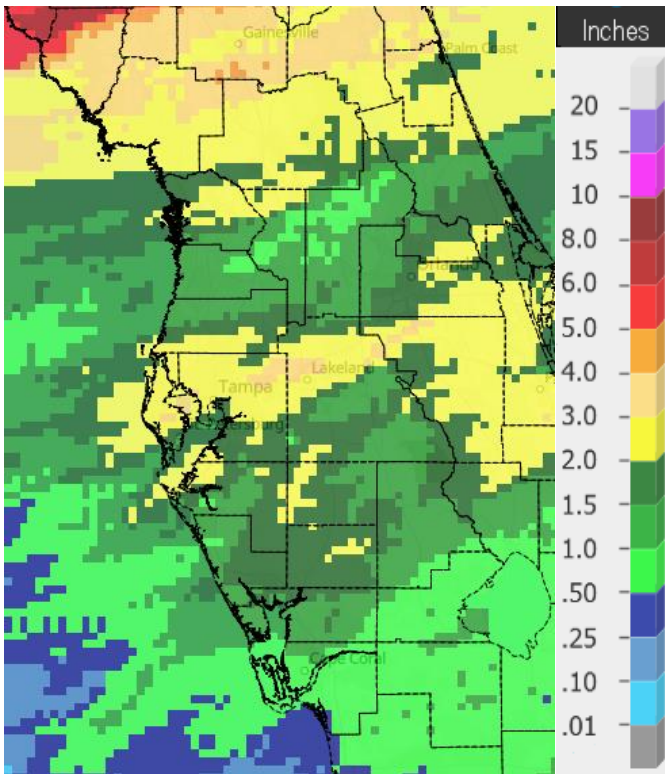
On the following pages are graphics that depict the monthly/season total rainfall and percent of normal rainfall (based on the 1991-2020 Normals).



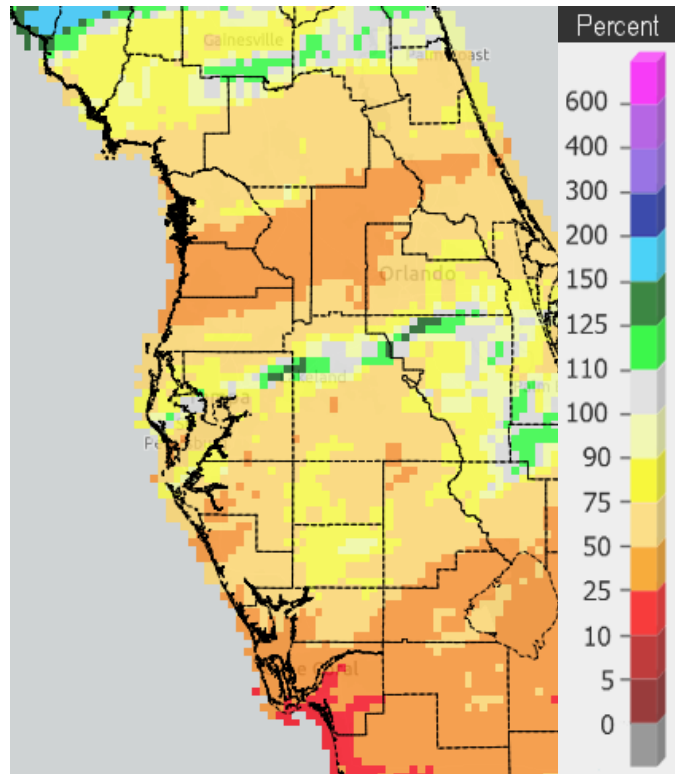
Rainfall December 2024



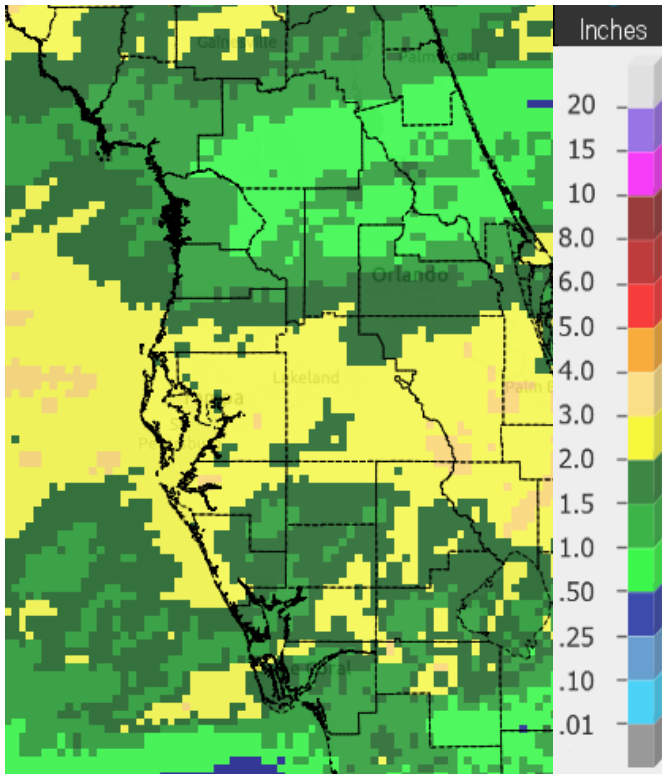
Percent of Normal



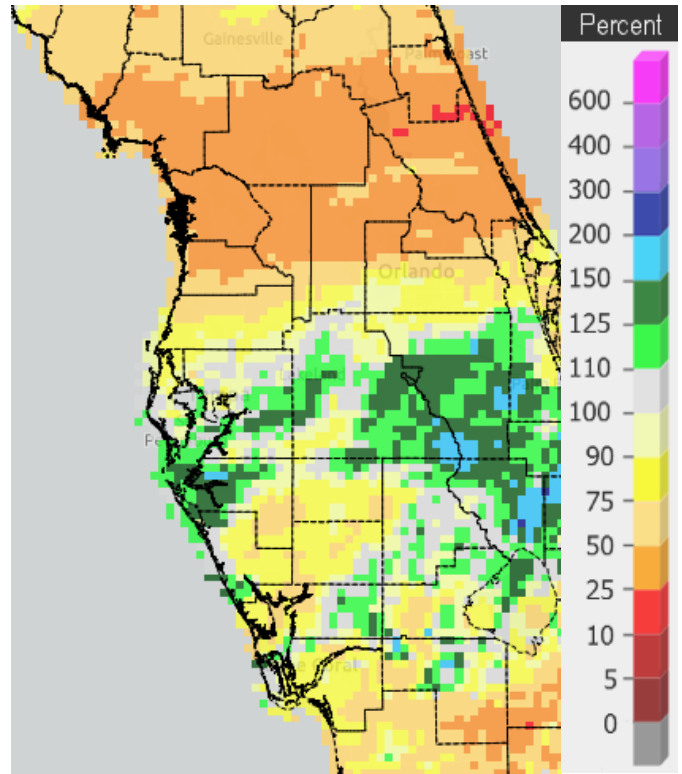
Rainfall January 2025



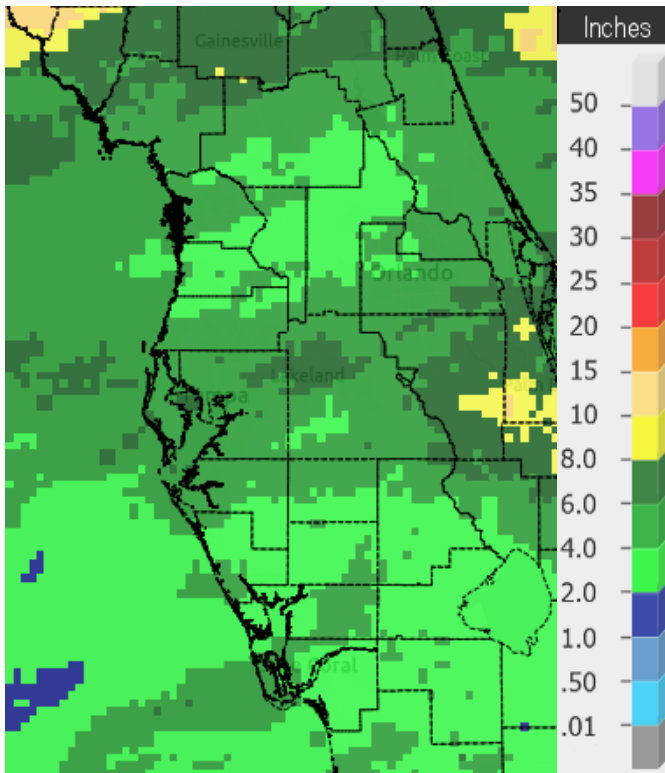
Percent of Normal



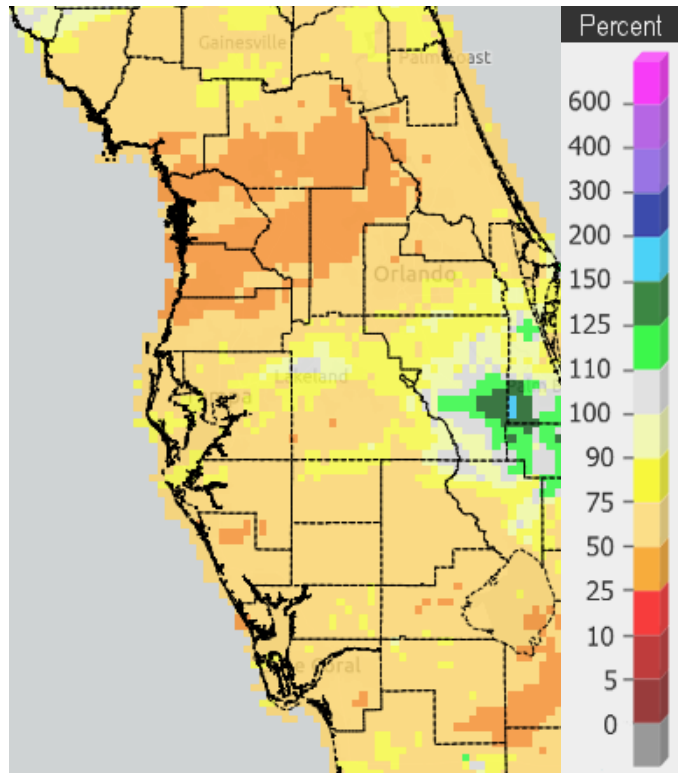
Rainfall February 2025



Percent of Normal



Rainfall Winter 2024-2025



Percent of Normal

Below are tables of the Top Ten Warmest, Coolest, Wettest, and Driest Februarys and Winters (December/January/February) at some official NWS locations, which include the average/total for this month/season where available, and the 1991-2020 Normal (average) temperature and rainfall.

CHIEFLAND 5 ESE (records began in July 1956):

Warmest Februarys		Coolest Februarys		Wettest Februarys		Driest Februarys	
1	68.8 in 2018	1	48.4 in 1958	1	15.20 in 1998	1	0.12 in 1962
2	65.3 in 2019	2	49.3 in 2010	2	9.06 in 2004	2	0.72 in 1994
3	64.7 in 2023		49.3 in 1968	3	8.73 in 1970	3	0.77 in 1980
4	64.2 in 1990	4	50.0 in 1978	4	7.75 in 1964	4	0.78 in 1989
5	64.1 in 1959	5	52.3 in 1963	5	7.42 in 1966	5	0.82 in 1997
6	64.0 in 2017	6	52.4 in 1964	6	7.05 in 1965	6	0.98 in 2022
	64.0 in 1982	7	53.0 in 1969	7	6.55 in 1993		0.98 in 1996
8	63.3 in 1975	8	53.1 in 1980	8	6.26 in 1967	8	1.01 in 1991
	63.3 in 1957	9	53.3 in 1977	9	6.10 in 1963	9	1.06 in 2000
10	63.1 in 2001	10	53.5 in 2009	10	6.01 in 1978	10	1.21 in 2017
11	62.6 in 1997			
12	62.5 in 2012			35	2.78 in 2025	33	2.78 in 2025
	62.5 in 1962						
14	62.0 in 2025						

Normal Temperature for February at CHIF1 = 58.5°

Normal Rainfall for February at CHIF1 = 3.25 in.

Warmest Winters		Coolest Winters		Wettest Winters		Driest Winters	
1	62.0 in 1956-57	1	50.8 in 1957-58	1	30.55 in 1997-98	1	2.18 in 1956-57
2	61.7 in 1971-72	2	51.7 in 1977-78	2	26.40 in 1963-64	2	3.82 in 2021-22
3	61.5 in 1998-99		51.7 in 1963-64	3	20.46 in 1969-70	3	3.86 in 2000-01
4	61.1 in 1990-91	4	52.0 in 1976-77	4	19.65 in 1964-65	4	4.21 in 1961-62
5	60.9 in 2019-20	5	52.1 in 2009-10	5	17.59 in 1977-78	5	5.19 in 2016-17
6	60.8 in 1973-74	6	52.7 in 2010-11	6	17.58 in 1978-79		5.19 in 1980-81
7	60.5 in 2022-23		52.7 in 1980-81	7	16.42 in 1965-66	7	5.26 in 2011-12
8	60.2 in 2017-18	8	52.9 in 1969-70	8	16.37 in 2018-19	8	5.42 in 2004-05
	60.2 in 1974-75	9	53.2 in 1968-69	9	16.27 in 2005-06	9	5.49 in 1984-85
10	59.6 in 1988-89	10	53.7 in 2002-03	10	15.89 in 2013-14	10	5.75 in 2022-23
	59.6 in 1964-65		53.7 in 1962-63			...	
		...				20	7.19 in 2024-25
		22	55.7 in 2024-25				
			55.7 in 1978-79				

Normal Temperature for Winter (Dec/Jan/Feb) at CHIF1 = 57.1°

Normal Rainfall for Winter (Dec/Jan/Feb) at CHIF1 = 10.11 in.

INVERNESS 3 SE (records began in July 1948):

Warmest Februarys		Coolest Februarys		Wettest Februarys		Driest Februarys	
1	69.4 in 1949	1	49.7 in 2010	1	10.21 in 1952	1	0.46 in 1999
2	68.9 in 2018	2	50.6 in 1978	2	6.62 in 1998	2	0.52 in 1985
3	68.1 in 1959	3	51.1 in 1958	3	6.45 in 1960	3	0.58 in 1976
4	66.9 in 1957	4	54.0 in 1977	4	6.25 in 1983	4	0.73 in 1950
5	66.1 in 2019	5	54.3 in 1980	5	6.16 in 1978	5	0.75 in 1989
6	65.9 in 1956	6	54.7 in 1968	6	5.64 in 2006	6	0.82 in 2009
7	65.8 in 2023	7	54.8 in 1988	7	5.56 in 1971	7	0.90 in 2025
	65.8 in 1982	8	54.9 in 2015	8	5.43 in 1964	8	0.95 in 1949
9	65.7 in 2025	9	55.1 in 2009	9	5.35 in 2003	9	0.99 in 2022
	65.7 in 1975	10	55.3 in 2006	10	5.34 in 1970		0.99 in 2005
			55.3 in 1979				0.99 in 1995
			55.3 in 1973				0.99 in 1956

Normal Temperature for February at INVF1 = 58.9°

Normal Rainfall for February at INVF1 = 2.69 in.

Warmest Winters		Coolest Winters		Wettest Winters		Driest Winters	
1	67.0 in 1948-49	1	52.5 in 2002-03	1	22.52 in 1997-98	1	1.98 in 1949-50
2	66.0 in 1949-50	2	53.1 in 1977-78	2	17.06 in 1977-78	2	2.49 in 2004-05
3	65.3 in 1956-57		53.1 in 1976-77	3	16.66 in 2018-19	3	2.59 in 1984-85
4	64.1 in 2016-17	4	53.2 in 2009-10	4	14.69 in 1969-70	4	2.98 in 2012-13
5	63.0 in 1971-72	5	53.5 in 1957-58	5	14.46 in 1963-64	5	3.20 in 1956-57
6	62.5 in 1951-52	6	54.1 in 2010-11	6	14.06 in 2002-03	6	3.48 in 2024-25
7	62.3 in 1974-75	7	55.6 in 1987-88	7	13.93 in 1951-52	7	3.52 in 1948-49
	62.3 in 1964-65	8	55.9 in 1995-96	8	12.79 in 1978-79	8	3.56 in 2021-22
9	62.2 in 1973-74	9	56.1 in 1963-64	9	12.70 in 1993-94	9	3.81 in 1975-76
	62.2 in 1953-54	10	56.3 in 2005-06	10	12.35 in 2023-24	10	3.90 in 2011-12
...		...					
32	59.0 in 2024-25	27	59.0 in 2024-25				

Normal Temperature for Winter (Dec/Jan/Feb) at INVF1 = 58.0°

Normal Rainfall for Winter (Dec/Jan/Feb) at INVF1 = 8.14 in.

BROOKSVILLE AREA (records began in January 1892):

Warmest Februarys	Coolest Februarys	Wettest Februarys	Driest Februarys
1 70.6 in 2018	1 50.4 in 2010	1 10.15 in 1998	1 0.10 in 1911
2 69.9 in 1927	2 52.1 in 1895	2 9.59 in 1952	2 0.11 in 2017
3 69.1 in 1932	3 52.8 in 1902	3 8.84 in 1899	3 0.14 in 2000
4 69.0 in 1949	4 52.9 in 1978	4 8.72 in 2004	4 0.48 in 2023
5 68.8 in 1944	5 54.8 in 1947	5 7.37 in 1936	5 0.50 in 1948
6 68.6 in 2019	54.8 in 1920	6 7.19 in 1983	6 0.52 in 1938
68.6 in 1939	7 55.2 in 1901	7 7.04 in 1903	7 0.53 in 2009
8 68.4 in 1918	8 55.9 in 2009	8 6.83 in 1971	0.53 in 1939
9 68.1 in 1959	9 56.0 in 1963	9 6.78 in 1981	9 0.54 in 1999
10 66.9 in 1975	56.0 in 1942	10 6.52 in 1946	10 0.57 in 2001
66.9 in 1945			0.57 in 1943
...			...
21 65.6 in 2025			29 1.31 in 2025

Normal Temperature for February at BKV = 60.6°
 Normal Rainfall for February at BKV = 2.57 in.

Warmest Winters	Coolest Winters	Wettest Winters	Driest Winters
1 68.2 in 1931-32	1 53.8 in 1901-02	1 22.83 in 1997-98	1 1.09 in 1910-11
2 67.5 in 1948-49	2 54.0 in 2009-10	2 17.83 in 1898-99	2 1.57 in 1906-07
3 66.9 in 1949-50	3 54.5 in 2010-11	3 17.22 in 1935-36	3 1.89 in 2011-12
4 66.1 in 1926-27	4 55.0 in 2002-03	4 16.98 in 1911-12	4 2.44 in 1949-50
5 65.8 in 1912-13	5 55.7 in 1976-77	5 16.44 in 1969-70	5 2.63 in 1938-39
6 65.4 in 1936-37	6 56.2 in 1969-70	6 16.21 in 1902-03	6 2.81 in 1999-00
65.4 in 1932-33	7 56.4 in 2003-04	7 15.51 in 1963-64	7 2.87 in 2008-09
8 65.2 in 1971-72	8 56.7 in 1963-64	8 14.93 in 1913-14	8 3.02 in 1908-09
9 64.3 in 1973-74	9 56.8 in 1939-40	9 14.80 in 2003-04	9 3.26 in 1942-43
10 64.1 in 1974-75	56.8 in 1894-95	10 14.79 in 1977-78	10 3.30 in 2024-25
...	...		
67 59.0 in 2024-25	36 59.0 in 2024-25		
59.0 in 1975-76	59.0 in 1975-76		
59.0 in 1965-66	59.0 in 1965-66		
59.0 in 1959-60	59.0 in 1959-60		

Normal Temperature for Winter (Dec/Jan/Feb) at BKV = 59.5°
 Normal Rainfall for Winter (Dec/Jan/Feb) at BKV = 8.14 in.

ST LEO (records began in April 1895):

Warmest Februarys		Coolest Februarys		Wettest Februarys		Driest Februarys	
1	71.2 in 2018	1	52.7 in 1958	1	11.04 in 1998	1	0.01 in 1911
2	70.2 in 1932	2	53.3 in 2010	2	9.71 in 1899	2	0.14 in 1999
3	69.5 in 1949	3	53.9 in 1978	3	9.48 in 1983	3	0.24 in 2023
4	69.4 in 2019	4	54.4 in 1947	4	8.69 in 1937	4	0.25 in 1950
5	69.1 in 1982	5	54.9 in 1968	5	8.09 in 1936	5	0.32 in 1945
6	69.0 in 1990	6	55.9 in 1912	6	7.22 in 1915	6	0.40 in 1989
7	68.9 in 1959	7	56.0 in 1942	7	6.92 in 1897	7	0.42 in 1948
8	68.7 in 1939	8	56.5 in 1902	8	6.35 in 1971	8	0.44 in 1916
9	68.2 in 1944	9	56.7 in 1964		6.35 in 1952	9	0.48 in 1938
10	68.1 in 1962	10	57.1 in 1970	10	6.31 in 1963	10	0.51 in 1922
...			57.1 in 1941	
16	67.3 in 2025		57.1 in 1920	88	1.55 in 2025	43	1.55 in 2025
	67.3 in 1948						

Normal Temperature for February at STLf1 = 62.6°
 Normal Rainfall for February at STLf1 = 2.38 in.

Warmest Winters		Coolest Winters		Wettest Winters		Driest Winters	
1	68.7 in 1931-32	1	54.7 in 1930-31	1	28.97 in 1997-98	1	1.56 in 1906-07
2	68.0 in 1948-49	2	55.5 in 1957-58	2	23.03 in 1898-99	2	1.72 in 1910-11
3	66.6 in 1949-50	3	56.3 in 1977-78	3	18.02 in 1981-82	3	2.07 in 1949-50
4	66.4 in 1936-37	4	56.4 in 1939-40	4	17.89 in 2002-03	4	2.23 in 1938-39
5	66.1 in 1956-57	5	56.5 in 2009-10	5	16.87 in 1969-70	5	2.62 in 2011-12
6	65.8 in 1971-72		56.5 in 1976-77	6	16.34 in 1935-36	6	2.71 in 1975-76
7	65.7 in 1912-13	7	56.9 in 1969-70	7	15.61 in 1913-14	7	2.81 in 1937-38
8	65.5 in 1998-99	8	57.1 in 2010-11	8	14.90 in 1940-41	8	2.93 in 2021-22
9	65.2 in 2007-08	9	57.3 in 1927-28	9	14.55 in 1902-03	9	3.48 in 1915-16
10	65.1 in 2016-17	10	57.5 in 1935-36	10	14.40 in 1977-78	10	3.54 in 2016-17
	65.1 in 1990-91					11	3.65 in 1931-32
...		...				12	3.70 in 2024-25
71	61.3 in 2024-25	52	61.3 in 2024-25				
	61.3 in 1897-98		61.3 in 1897-98				

Normal Temperature for Winter (Dec/Jan/Feb) at STLf1 = 61.5°
 Normal Rainfall for Winter (Dec/Jan/Feb) at STLf1 = 7.97 in.

TARPON SPRINGS (records began in January 1892):

Warmest Februarys	Coolest Februarys	Wettest Februarys	Driest Februarys
1 71.2 in 2018	1 51.8 in 1958	1 10.91 in 1998	1 0.06 in 1911
2 70.7 in 1932	2 52.0 in 1895	2 9.79 in 1899	2 0.17 in 2009
3 69.6 in 2019	3 53.0 in 1978	3 8.90 in 1936	3 0.26 in 1918
69.6 in 1949	4 54.6 in 2010	4 8.56 in 1937	4 0.32 in 1999
5 69.3 in 1990	5 55.0 in 1968	5 8.45 in 1983	5 0.38 in 1997
6 68.9 in 1944	6 55.2 in 1902	6 7.36 in 1971	6 0.40 in 1950
68.9 in 1939	7 55.4 in 1964	7 6.52 in 1903	7 0.41 in 1989
8 68.7 in 1927	55.4 in 1947	8 6.49 in 1963	8 0.44 in 1945
9 68.6 in 1997	9 55.5 in 1980	9 6.31 in 2004	9 0.52 in 1938
10 68.1 in 1982	10 55.7 in 1963	10 6.24 in 1970	10 0.59 in 1944
...	
21 66.3 in 2025		92 1.68 in 2025	41 1.68 in 2025
66.3 in 1962		1.68 in 1951	1.68 in 1951

Normal Temperature for February at TRPF1 = 62.9°

Normal Rainfall for February at TRPF1 = 2.51 in.

Warmest Winters	Coolest Winters	Wettest Winters	Driest Winters
1 70.5 in 1931-32	1 54.2 in 1957-58	1 29.65 in 1997-98	1 0.97 in 1949-50
2 67.3 in 1949-50	2 55.1 in 1963-64	2 20.41 in 1935-36	2 2.06 in 1910-11
3 66.0 in 1932-33	3 55.8 in 1977-78	3 19.40 in 1898-99	3 2.08 in 1938-39
4 65.9 in 2016-17	4 56.3 in 1980-81	4 18.08 in 1969-70	4 2.14 in 1906-07
5 65.6 in 1990-91	5 56.5 in 1962-63	5 17.47 in 1983-84	5 2.37 in 2000-01
6 65.5 in 1936-37	56.5 in 1939-40	6 17.41 in 2002-03	6 2.67 in 2008-09
7 65.3 in 2019-20	7 56.6 in 2010-11	7 16.44 in 2018-19	7 3.02 in 1975-76
65.3 in 1996-97	56.6 in 1901-02	8 15.17 in 1902-03	8 3.11 in 1934-35
65.3 in 1926-27	9 56.8 in 2009-10	9 14.89 in 1963-64	9 3.41 in 2021-22
65.3 in 1912-13	56.8 in 1976-77	10 14.33 in 1985-86	10 3.54 in 1968-69
	56.8 in 1969-70
...		95 5.56 in 2024-25	36 5.56 in 2024-25
61 61.7 in 2024-25	55 61.7 in 2024-25		
61.7 in 2013-14	61.7 in 2013-14		
61.7 in 1952-53	61.7 in 1952-53		
61.7 in 1945-46	61.7 in 1945-46		
61.7 in 1920-21	61.7 in 1920-21		

Normal Temperature for Winter (Dec/Jan/Feb) at TRPF1 = 61.8°

Normal Rainfall for Winter (Dec/Jan/Feb) at TRPF1 = 8.28 in.

TAMPA AREA (records began in April 1890):

Warmest Februarys	Coolest Februarys	Wettest Februarys	Driest Februarys
1 74.2 in 2018	1 52.9 in 1958	1 10.92 in 1937	1 0.05 in 1911
2 70.9 in 2019	2 53.2 in 1978	2 10.82 in 1998	2 0.08 in 1918
3 70.8 in 1932	3 54.3 in 1968	3 9.09 in 2006	3 0.21 in 1950
4 70.3 in 2023	4 54.8 in 1947	4 7.95 in 1963	4 0.25 in 1932
5 70.1 in 1949	54.8 in 1895	5 7.43 in 1936	5 0.29 in 1999
6 69.1 in 1990	6 55.0 in 2010	6 7.35 in 1983	6 0.30 in 2000
69.1 in 1891	7 55.8 in 1969	7 6.55 in 2015	7 0.34 in 1949
8 68.9 in 1959	8 56.2 in 1912	8 6.27 in 1899	8 0.41 in 1991
68.9 in 1927	56.2 in 1902	9 6.06 in 1903	0.41 in 1989
10 68.8 in 2017	10 56.6 in 1980	10 5.98 in 1919	10 0.43 in 1994
11 68.6 in 2025	
68.6 in 2022		57 2.85 in 2025	79 2.85 in 2025
68.6 in 1997			

Normal Temperature for February at TPA = 64.7°
 Normal Rainfall for February at TPA = 2.62 in.

Warmest Winters	Coolest Winters	Wettest Winters	Driest Winters
1 70.3 in 1931-32	1 55.2 in 1957-58	1 31.03 in 1997-98	1 0.51 in 1949-50
2 68.4 in 2016-17	2 55.7 in 1977-78	2 17.11 in 2002-03	2 1.41 in 1906-07
68.4 in 1948-49	3 56.0 in 1976-77	3 15.81 in 2018-19	3 1.71 in 1931-32
4 67.6 in 2021-22	4 56.2 in 1980-81	4 15.59 in 1898-99	4 1.76 in 1975-76
5 67.0 in 1949-50	5 56.5 in 1969-70	5 14.86 in 1936-37	5 1.86 in 1910-11
6 66.8 in 2017-18	6 56.8 in 1963-64	6 14.53 in 1914-15	6 2.15 in 1948-49
7 66.7 in 1936-37	7 57.2 in 1939-40	7 13.78 in 1902-03	7 2.54 in 1938-39
8 66.5 in 2019-20	8 57.3 in 1968-69	8 13.77 in 1941-42	8 2.67 in 2021-22
9 66.4 in 2022-23	9 57.4 in 1901-02	9 13.74 in 1935-36	9 2.76 in 1943-44
10 66.1 in 2011-12	10 57.7 in 2009-10	10 12.76 in 1963-64	10 2.85 in 1934-35
66.1 in 1912-13	
...	...	65 6.80 in 2024-25	71 6.80 in 2024-25
44 63.4 in 2024-25	92 63.4 in 2024-25		

Normal Temperature for Winter (Dec/Jan/Feb) at TPA = 63.9°
 Normal Rainfall for Winter (Dec/Jan/Feb) at TPA = 7.83 in.

ST PETERSBURG – ALBERT WHITTED (records began in August 1914):

Warmest Februarys	Coolest Februarys	Wettest Februarys	Driest Februarys
1 72.6 in 2018	1 55.7 in 1978	1 12.71 in 1998	1 0.12 in 1918
2 72.3 in 1932	2 55.9 in 2010	2 10.93 in 1937	2 0.18 in 2001
3 71.1 in 1949	3 57.3 in 1964	3 9.06 in 1983	3 0.19 in 2023
4 70.4 in 2023	57.3 in 1947	4 8.26 in 1963	4 0.24 in 1976
5 70.1 in 2019	5 58.3 in 1940	5 7.96 in 1936	5 0.25 in 1999
6 70.0 in 1959	6 58.8 in 1963	6 6.69 in 1946	6 0.29 in 2012
7 69.9 in 1927	7 58.9 in 1980	7 6.37 in 1972	7 0.34 in 1949
8 69.6 in 1957	8 59.0 in 1968	8 5.97 in 1964	8 0.43 in 1989
9 69.4 in 1944	9 59.3 in 1941	9 5.67 in 1958	9 0.44 in 1944
10 69.3 in 1982	10 59.5 in 1977	10 5.57 in 1919	10 0.45 in 1950
69.3 in 1939	59.5 in 1942
...		48 2.42 in 2025	63 2.42 in 2025
17 68.5 in 2025			

Normal Temperature for February at SPG = 64.9°

Normal Rainfall for February at SPG = 2.02 in.

Warmest Winters	Coolest Winters	Wettest Winters	Driest Winters
1 72.1 in 1931-32	1 58.1 in 1939-40	1 32.36 in 1997-98	1 0.59 in 1949-50
2 69.4 in 1948-49	2 58.2 in 1963-64	2 20.23 in 2002-03	2 1.49 in 2016-17
3 68.3 in 1971-72	3 58.5 in 2009-10	3 17.14 in 1963-64	3 1.51 in 2000-01
4 68.1 in 1936-37	58.5 in 1976-77	4 16.95 in 1914-15	4 1.54 in 1975-76
5 67.8 in 1949-50	5 58.7 in 1977-78	5 15.15 in 1935-36	5 1.92 in 2011-12
6 67.7 in 2016-17	6 59.2 in 1980-81	6 13.63 in 1947-48	6 2.06 in 1938-39
67.7 in 2012-13	7 59.3 in 1962-63	7 13.50 in 1969-70	7 2.11 in 1955-56
8 67.6 in 1956-57	8 59.8 in 1969-70	8 13.37 in 1936-37	8 2.21 in 1934-35
9 67.5 in 1932-33	9 60.1 in 1930-31	9 13.14 in 1957-58	9 2.23 in 2021-22
10 67.1 in 2021-22	10 60.5 in 2002-03	10 12.64 in 1945-46	10 2.35 in 1948-49
67.1 in 1926-27			...
...			25 4.34 in 2024-25
58 63.4 in 2024-25	41 63.4 in 2024-25		
63.4 in 2008-09	63.4 in 2008-09		

Normal Temperature for Winter (Dec/Jan/Feb) at SPG = 64.1°

Normal Rainfall for Winter (Dec/Jan/Feb) at SPG = 6.93 in.

PLANT CITY (records began in September 1892):

Warmest Februarys		Coolest Februarys		Wettest Februarys		Driest Februarys	
1	73.2 in 2018	1	54.6 in 1958	1	9.04 in 1936	1	0.00 in 1911
2	71.9 in 2019	2	54.9 in 2010	2	8.87 in 1899	2	Trace in 1918
3	71.4 in 2023	3	55.9 in 1978	3	8.57 in 1983	3	0.05 in 1989
4	70.6 in 2025	4	56.0 in 1902	4	8.49 in 1998	4	0.09 in 1976
	70.6 in 1949	5	56.2 in 1947	5	7.97 in 1937	5	0.25 in 1950
6	70.1 in 1959	6	56.7 in 1968	6	7.56 in 1963	6	0.28 in 1932
7	69.6 in 1918		56.7 in 1942	7	6.77 in 1919	7	0.31 in 2000
8	69.0 in 2017		56.7 in 1941	8	6.13 in 1972	8	0.36 in 1945
9	68.9 in 1982	9	56.9 in 1931	9	5.98 in 2015	9	0.37 in 1949
10	68.8 in 2021	10	57.1 in 1912	10	5.73 in 1992		0.37 in 1944
	68.8 in 1939			
				72	2.07 in 2025	56	2.07 in 2025
					2.07 in 1924		2.07 in 1924

Normal Temperature for February at PLCF1 = 65.3°
 Normal Rainfall for February at PLCF1 = 2.33 in.

Warmest Winters		Coolest Winters		Wettest Winters		Driest Winters	
1	68.7 in 1948-49	1	55.2 in 1930-31	1	26.68 in 1997-98	1	1.03 in 1906-07
2	67.3 in 2019-20	2	56.5 in 1935-36	2	17.28 in 1898-99	2	1.06 in 1975-76
3	67.2 in 1971-72	3	56.6 in 1939-40	3	17.16 in 1935-36	3	2.04 in 1910-11
4	67.0 in 2022-23		56.6 in 1901-02	4	16.72 in 2002-03	4	2.15 in 1938-39
5	66.8 in 1956-57	5	56.7 in 1957-58	5	14.99 in 2018-19	5	2.19 in 1908-09
6	66.2 in 1949-50	6	57.2 in 1980-81	6	14.70 in 1914-15	6	2.39 in 2011-12
7	66.1 in 2012-13	7	57.5 in 1976-77	7	14.27 in 1905-06	7	2.68 in 1917-18
8	66.0 in 2018-19	8	57.9 in 2009-10	8	14.09 in 1978-79	8	2.75 in 1942-43
9	65.8 in 2015-16	9	58.2 in 1963-64	9	13.94 in 1963-64	9	2.89 in 1904-05
10	65.7 in 2021-22	10	58.3 in 1969-70	10	13.57 in 1925-26	10	3.19 in 1948-49
			58.3 in 1895-96	
...		...		88	5.35 in 2024-25	40	5.35 in 2024-25
38	63.3 in 2024-25	73	63.3 in 2024-25				
	63.3 in 1938-39		63.3 in 1938-39				

Normal Temperature for Winter (Dec/Jan/Feb) at PLCF1 = 64.2°
 Normal Rainfall for Winter (Dec/Jan/Feb) at PLCF1 = 7.87 in.

LAKELAND AREA (records began in January 1915):

Warmest Februarys	Coolest Februarys	Wettest Februarys	Driest Februarys
1 72.8 in 2018	1 52.8 in 1958	1 9.60 in 1983	1 Trace in 1918
2 71.6 in 1932	2 54.7 in 1947	2 8.40 in 1936	2 0.14 in 1989
3 71.1 in 2019	3 55.0 in 1978	3 8.25 in 1998	3 0.17 in 1945
4 70.7 in 2023	4 55.8 in 1968	4 7.21 in 1937	4 0.20 in 1916
5 70.4 in 1918	5 55.9 in 2010	5 6.59 in 1963	5 0.25 in 1932
6 70.1 in 1990	6 56.7 in 1941	6 5.89 in 1915	6 0.26 in 1949
70.1 in 1949	7 56.8 in 1942	7 5.65 in 2015	0.26 in 1935
8 69.8 in 1982	8 57.3 in 1964	8 5.55 in 1919	8 0.27 in 1976
9 69.7 in 2025	57.3 in 1963	9 5.36 in 1972	9 0.46 in 2023
10 69.6 in 1927	10 57.9 in 1973	10 5.11 in 1992	10 0.48 in 1999
	57.9 in 1970		0.48 in 1944
	
		39 2.95 in 2025	73 2.95 in 2025

Normal Temperature for February at LLDF1 = 65.0°
 Normal Rainfall for February at LLDF1 = 2.33 in.

Warmest Winters	Coolest Winters	Wettest Winters	Driest Winters
1 70.9 in 1931-32	1 55.2 in 1957-58	1 23.72 in 1997-98	1 1.49 in 1934-35
2 68.1 in 1948-49	2 56.6 in 1976-77	2 19.49 in 2002-03	2 1.64 in 1975-76
3 68.0 in 2016-17	3 56.8 in 1977-78	3 16.60 in 1935-36	3 1.82 in 1938-39
4 66.9 in 1949-50	4 57.1 in 1969-70	4 15.22 in 2018-19	4 2.04 in 1927-28
5 66.7 in 1936-37	5 57.4 in 1963-64	5 12.94 in 1978-79	5 2.10 in 1943-44
66.7 in 1932-33	57.4 in 1939-40	6 12.66 in 1982-83	6 2.21 in 1931-32
7 66.6 in 2022-23	7 58.2 in 1982-83	7 11.97 in 1925-26	7 2.44 in 2021-22
66.6 in 2019-20	58.2 in 1980-81	8 11.96 in 1963-64	8 2.47 in 1948-49
9 66.4 in 1956-57	9 58.6 in 1962-63	9 11.81 in 1965-66	9 2.56 in 2011-12
10 66.3 in 1971-72	10 58.8 in 2009-10	10 11.58 in 1992-93	10 2.71 in 2000-01
...
29 63.7 in 2024-25	43 63.7 in 2024-25	61 6.27 in 2024-25	50 6.27 in 2024-25
63.7 in 2023-24	63.7 in 2023-24		

Normal Temperature for Winter (Dec/Jan/Feb) at LLDF1 = 64.0°
 Normal Rainfall for Winter (Dec/Jan/Feb) at LLDF1 = 7.93 in.

BARTOW (records began in June 1892):

Warmest Februarys		Coolest Februarys		Wettest Februarys		Driest Februarys	
1	71.6 in 2018	1	54.1 in 1895	1	9.15 in 1998	1	0.00 in 1911
2	71.0 in 1949	2	54.8 in 1958	2	9.12 in 1936	2	0.03 in 1932
3	70.1 in 1959	3	54.9 in 1912	3	8.33 in 1983	3	0.07 in 2001
4	69.7 in 2023	4	56.2 in 1968	4	8.11 in 1963	4	0.14 in 1916
	69.7 in 2014	5	56.3 in 2010	5	7.30 in 1899	5	0.21 in 2000
6	69.6 in 2019	6	56.4 in 1947	6	6.41 in 1937	6	0.24 in 1989
	69.6 in 1990	7	57.8 in 1901	7	6.33 in 1913	7	0.26 in 1945
	69.6 in 1982	8	57.9 in 1980	8	6.23 in 1960	8	0.32 in 2023
9	69.5 in 2001	9	58.0 in 1977	9	6.16 in 1972	9	0.33 in 1950
	69.5 in 1903	10	58.1 in 1964	10	5.76 in 1924	10	0.37 in 2009
11	69.3 in 2025			
				69	2.09 in 2025	64	2.09 in 2025
					2.09 in 2024		2.09 in 2024

Normal Temperature for February at BARF1 = 64.0°
 Normal Rainfall for February at BARF1 = 2.10 in.

Warmest Winters		Coolest Winters		Wettest Winters		Driest Winters	
1	68.9 in 1948-49	1	56.7 in 1957-58	1	24.41 in 1997-98	1	1.57 in 1938-39
2	67.5 in 2013-14	2	57.8 in 1909-10	2	19.39 in 2002-03	2	1.65 in 1943-44
3	66.8 in 1949-50	3	58.0 in 1980-81	3	18.87 in 1935-36	3	1.72 in 1934-35
4	66.7 in 2016-17	4	58.5 in 1969-70	4	16.42 in 1983-84	4	1.77 in 2011-12
5	66.3 in 1998-99	5	58.7 in 1963-64	5	16.18 in 1914-15	5	1.83 in 1984-85
	66.3 in 1956-57	6	59.4 in 2010-11	6	16.06 in 1905-06	6	1.89 in 1910-11
7	66.2 in 1971-72	7	59.5 in 1962-63	7	15.37 in 1898-99	7	2.03 in 2000-01
8	65.8 in 1988-89	8	59.7 in 1903-04	8	15.02 in 1925-26	8	2.15 in 1915-16
	65.8 in 1974-75	9	59.8 in 1911-12	9	13.59 in 1957-58	9	2.16 in 1949-50
	65.8 in 1912-13	10	59.9 in 1968-69	10	13.23 in 1965-66	10	2.22 in 1904-05
			59.9 in 1954-55	
...		...		102	4.28 in 2024-25	31	4.28 in 2024-25
38	62.6 in 2024-25	36	62.6 in 2024-25				
	62.6 in 1982-83		62.6 in 1982-83				

Normal Temperature for Winter (Dec/Jan/Feb) at BARF1 = 63.0°
 Normal Rainfall for Winter (Dec/Jan/Feb) at BARF1 = 6.92 in.

WINTER HAVEN AREA (records began in March 1941):

Warmest Februarys	Coolest Februarys	Wettest Februarys	Driest Februarys
1 72.8 in 2019	1 54.0 in 1958	1 10.61 in 1998	1 0.20 in 1945
2 72.7 in 2018	2 55.0 in 2010	2 7.82 in 1983	2 0.32 in 1989
3 71.5 in 1949	3 55.5 in 1978	3 6.57 in 1960	3 0.33 in 1944
4 70.1 in 1990	4 56.4 in 1968	4 6.03 in 1963	4 0.41 in 2011
5 70.0 in 1975	5 56.8 in 1969	5 5.86 in 2021	5 0.44 in 1950
6 69.7 in 2025	6 57.0 in 1947	5.86 in 2015	6 0.54 in 2009
69.7 in 2023	7 57.9 in 1964	7 5.49 in 1957	7 0.56 in 2000
8 69.4 in 1982	8 58.5 in 1980	8 5.08 in 2002	8 0.57 in 2023
69.4 in 1959	9 58.9 in 1977	9 5.05 in 1972	9 0.58 in 1949
10 69.0 in 1997	10 59.0 in 1963	10 4.73 in 1971	10 0.60 in 1954
	
		36 2.22 in 2025	46 2.22 in 2025
		2.22 in 2007	2.22 in 2007

Normal Temperature for February at GIF = 65.1°

Normal Rainfall for February at GIF = 2.44 in.

Warmest Winters	Coolest Winters	Wettest Winters	Driest Winters
1 69.4 in 1948-49	1 56.6 in 1957-58	1 24.22 in 1997-98	1 1.75 in 1984-85
2 67.8 in 1949-50	2 56.9 in 1976-77	2 16.55 in 2002-03	2 1.83 in 1943-44
3 67.5 in 1971-72	3 57.7 in 1963-64	3 12.78 in 1965-66	3 2.00 in 2011-12
4 67.4 in 2016-17	4 58.0 in 2009-10	4 12.35 in 1963-64	4 2.28 in 1975-76
67.4 in 1990-91	5 58.1 in 1977-78	5 12.17 in 1957-58	5 2.79 in 1948-49
67.4 in 1988-89	6 58.6 in 1968-69	6 12.10 in 1947-48	6 3.00 in 2012-13
7 66.7 in 2022-23	7 58.7 in 2010-11	7 11.84 in 2018-19	7 3.09 in 2000-01
66.7 in 2019-20	8 59.1 in 1969-70	8 11.75 in 1983-84	8 3.25 in 2021-22
9 66.4 in 1956-57	9 59.6 in 1962-63	9 11.72 in 1978-79	9 3.53 in 2017-18
10 66.3 in 2021-22	10 60.6 in 1975-76	10 10.68 in 1977-78	10 3.54 in 1949-50
...
28 63.6 in 2024-25	33 63.6 in 2024-25	40 6.20 in 2024-25	41 6.20 in 2024-25

Normal Temperature for Winter (Dec/Jan/Feb) at GIF = 64.0°

Normal Rainfall for Winter (Dec/Jan/Feb) at GIF = 7.61 in.

SARASOTA-BRADENTON AREA (records began in January 1911):

Warmest Februarys	Coolest Februarys	Wettest Februarys	Driest Februarys
1 71.9 in 2018	1 54.4 in 1958	1 10.16 in 1983	1 Trace in 1911
2 71.1 in 2019	2 54.8 in 1978	2 9.29 in 1963	2 0.05 in 2001
3 70.5 in 1959	3 55.7 in 2010	3 7.34 in 1915	3 0.11 in 1950
4 69.7 in 1949	4 56.3 in 1977	4 7.13 in 1992	4 0.13 in 1989
5 69.4 in 2023	5 57.3 in 1980	5 6.65 in 1936	5 0.15 in 2023
6 69.4 in 1990	6 57.3 in 1912	6 6.04 in 1937	6 0.15 in 1932
7 69.3 in 2025	7 57.7 in 1968	7 5.92 in 1942	7 0.20 in 1918
8 69.1 in 1932	8 58.2 in 1942	8 5.91 in 1998	8 0.21 in 1949
9 68.4 in 1982	9 58.4 in 1969	9 5.80 in 1964	9 0.25 in 1945
10 68.3 in 1939	10 58.5 in 1941	10 5.73 in 1947	10 0.27 in 1944
	
		39 3.05 in 2025	75 3.05 in 2025
		3.05 in 1965	3.05 in 1965

Normal Temperature for February at SRQ = 64.8°

Normal Rainfall for February at SRQ = 1.92 in.

Warmest Winters	Coolest Winters	Wettest Winters	Driest Winters
1 69.1 in 1931-32	1 55.8 in 1976-77	1 28.11 in 1997-98	1 0.14 in 1949-50
2 67.9 in 1949-50	2 56.9 in 1977-78	2 19.08 in 1914-15	2 1.26 in 2000-01
3 67.9 in 1948-49	3 57.1 in 1980-81	3 14.94 in 1935-36	3 1.35 in 1975-76
4 67.3 in 2019-20	4 57.3 in 1957-58	4 14.44 in 2002-03	4 1.69 in 1948-49
5 67.0 in 2016-17	5 57.6 in 1939-40	5 14.38 in 1977-78	5 1.88 in 1931-32
6 66.9 in 1936-37	6 58.0 in 1930-31	6 13.92 in 1913-14	6 1.90 in 2011-12
7 66.4 in 1956-57	7 58.2 in 2010-11	7 13.71 in 1992-93	7 2.00 in 1934-35
8 66.3 in 2018-19	8 58.6 in 2009-10	8 13.61 in 1963-64	8 2.07 in 2021-22
9 66.2 in 2022-23	9 59.0 in 1963-64	9 13.36 in 1982-83	9 2.14 in 1938-39
10 66.1 in 2007-08	10 59.5 in 1969-70	10 12.99 in 1957-58	10 2.86 in 1961-62
	59.5 in 1935-36
30 64.6 in 2024-25	36 64.6 in 2024-25	85 4.31 in 2024-25	27 4.31 in 2024-25
64.6 in 1961-62	64.6 in 1961-62		
64.6 in 1958-59	64.6 in 1958-59		

Normal Temperature for Winter (Dec/Jan/Feb) at SRQ = 64.1°

Normal Rainfall for Winter (Dec/Jan/Feb) at SRQ = 7.04 in.

VENICE (records began in May 1955):

Warmest Februarys		Coolest Februarys		Wettest Februarys		Driest Februarys	
1	72.5 in 2018	1	54.2 in 1958	1	6.36 in 1957	1	0.00 in 2001
2	70.7 in 2019	2	55.0 in 1978	2	5.63 in 1998	2	0.10 in 1999
3	70.5 in 2023	3	57.2 in 1980	3	5.62 in 1978	3	0.15 in 1989
4	70.1 in 1959	4	58.1 in 1977	4	5.51 in 1963	4	0.16 in 2023
5	69.8 in 2012	5	58.3 in 1973	5	5.47 in 1972	5	0.29 in 1988
	69.8 in 2001	6	58.8 in 1968	6	4.92 in 2002	6	0.30 in 1997
7	69.5 in 1997	7	58.9 in 2010		4.92 in 1964	7	0.36 in 1962
8	69.2 in 2025	8	59.0 in 1964	8	4.57 in 2015	8	0.39 in 2011
9	68.2 in 2021	9	59.7 in 1969	9	4.37 in 1992	9	0.41 in 1994
	68.2 in 1994	10	60.3 in 2015	10	4.26 in 1960	10	0.60 in 2000
			60.3 in 1963	
				34	1.92 in 2025	35	1.92 in 2025

Normal Temperature for February at VNCF1 = 64.6°
 Normal Rainfall for February at VNCF1 = 2.00 in.

Warmest Winters		Coolest Winters		Wettest Winters		Driest Winters	
1	68.3 in 1988-89	1	57.0 in 1976-77	1	19.42 in 1997-98	1	1.94 in 2011-12
2	68.1 in 1971-72	2	57.2 in 1957-58	2	14.71 in 1957-58	2	1.99 in 2021-22
3	67.9 in 2016-17	3	57.5 in 1977-78	3	12.68 in 2015-16		1.99 in 2000-01
	67.9 in 2012-13	4	59.2 in 1975-76	4	12.65 in 1977-78	4	2.18 in 2016-17
5	67.5 in 2011-12	5	59.6 in 1963-64	5	12.35 in 2018-19	5	2.21 in 1975-76
6	67.1 in 2022-23	6	59.7 in 1969-70	6	12.01 in 1972-73	6	2.48 in 2022-23
7	67.0 in 1998-99	7	60.5 in 1962-63	7	11.45 in 1963-64	7	2.61 in 1961-62
8	66.6 in 2019-20	8	60.6 in 2010-11	8	11.34 in 1965-66	8	2.70 in 1984-85
9	66.2 in 1996-97	9	60.7 in 1979-80	9	11.20 in 2009-10	9	3.19 in 2012-13
10	65.9 in 2017-18	10	60.9 in 2002-03	10	11.18 in 2023-24	10	3.25 in 1996-97
			60.9 in 1968-69				3.25 in 1973-74
...		
22	64.1 in 2024-25	36	64.1 in 2024-25			21	4.33 in 2024-25
	64.1 in 2020-21		64.1 in 2020-21				
	64.1 in 1973-74		64.1 in 1973-74				

Normal Temperature for Winter (Dec/Jan/Feb) at VNCF1 = 63.8°
 Normal Rainfall for Winter (Dec/Jan/Feb) at VNCF1 = 6.99 in.

MYAKKA RIVER STATE PARK (Temperature records began in March 1956 and
 Rainfall records began in September 1943):

Warmest Februarys		Coolest Februarys		Wettest Februarys		Driest Februarys	
1	72.3 in 2018	1	52.7 in 1958	1	11.28 in 1998	1	Trace in 2001
2	71.7 in 2019	2	54.9 in 1968	2	9.55 in 1983	2	0.01 in 1950
3	70.3 in 1982	3	56.7 in 1963	3	6.01 in 1963	3	0.02 in 1999
4	70.0 in 1997	4	56.9 in 2010	4	5.88 in 1981	4	0.23 in 1989
5	69.7 in 1992	5	57.0 in 1978	5	5.49 in 1978	5	0.28 in 1944
6	69.4 in 1959	6	57.9 in 1973	6	5.41 in 1957	6	0.30 in 2023
7	69.1 in 2001	7	58.6 in 1980	7	5.33 in 2015	7	0.32 in 2011
8	68.9 in 2012	8	58.9 in 1977	8	5.21 in 2002	8	0.34 in 1949
	68.9 in 1994	9	60.5 in 2009	9	4.97 in 1961	9	0.41 in 1945
10	68.7 in 1990	10	60.9 in 2015	10	4.62 in 1972	10	0.44 in 1948

Average Temperature for February 2025 = Not Available Yet
 Normal Temperature for February at MKCF1 = 65.0°

Total Rainfall for February 2025 = Not Available Yet
 Normal Rainfall for February at MKCF1 = 2.44 in.

Warmest Winters		Coolest Winters		Wettest Winters		Driest Winters	
1	68.4 in 2016-17	1	57.2 in 1962-63	1	27.20 in 1997-98	1	0.04 in 1949-50
2	66.7 in 1971-72	2	58.2 in 1976-77	2	16.36 in 1977-78	2	1.64 in 1943-44
3	66.6 in 1998-99	3	58.5 in 1980-81	3	14.36 in 2015-16	3	1.68 in 2000-01
4	66.5 in 1992-93	4	58.9 in 1977-78	4	14.27 in 1978-79	4	1.77 in 1948-49
5	66.4 in 1991-92	5	59.4 in 2002-03	5	13.83 in 1992-93	5	2.08 in 2011-12
6	66.3 in 2012-13	6	59.6 in 2009-10	6	13.60 in 1972-73	6	2.14 in 1984-85
7	66.1 in 2018-19	7	59.7 in 2010-11	7	13.28 in 1982-83	7	2.26 in 1944-45
	66.1 in 2013-14		59.7 in 1960-61	8	12.66 in 1957-58	8	2.49 in 2021-22
	66.1 in 1990-91	9	61.3 in 1975-76	9	12.60 in 2018-19	9	2.50 in 2022-23
10	66.0 in 2011-12	10	61.6 in 2000-01	10	12.09 in 2003-04	10	2.51 in 1975-76
	66.0 in 1974-75						

Average Temp for Winter 2024-25 (Dec/Jan/Feb) = Not Available Yet
 Normal Temperature for Winter (Dec/Jan/Feb) at MKCF1 = 64.0°

Total Rainfall for Winter 2024-25 (Dec/Jan/Feb) = Not Available Yet
 Normal Rainfall for Winter (Dec/Jan/Feb) at MKCF1 = 7.80 in.

WAUCHULA (records began in January 1933):

Warmest Februarys	Coolest Februarys	Wettest Februarys	Driest Februarys
1 71.1 in 1949	1 46.7 in 2010	1 8.92 in 1936	1 0.00 in 2001
2 70.8 in 2018	2 54.4 in 1958	2 8.82 in 1998	0.00 in 2000
3 70.7 in 1939	3 56.3 in 1978	3 7.99 in 1983	3 0.19 in 1945
4 70.1 in 1959	4 57.1 in 1947	4 7.37 in 1963	4 0.22 in 1989
5 69.8 in 1933	5 57.3 in 1968	5 6.29 in 1992	5 0.30 in 1997
6 69.5 in 1982	6 58.3 in 2015	6 6.03 in 2002	6 0.33 in 1950
7 69.4 in 1990	7 58.5 in 2007	7 5.46 in 1960	7 0.45 in 2009
8 69.3 in 1975	58.5 in 1942	8 5.34 in 1942	0.45 in 1949
9 69.1 in 2019	9 58.7 in 1980	9 5.26 in 1937	9 0.46 in 2023
10 69.0 in 2023	10 58.9 in 1964	10 5.24 in 1952	10 0.52 in 2018
11 68.9 in 1962	
12 68.7 in 2008		41 2.42 in 2025	51 2.42 in 2025
13 68.6 in 2025			

Normal Temperature for February at WAUF1 = 62.9°

Normal Rainfall for February at WAUF1 = 2.18 in.

Warmest Winters	Coolest Winters	Wettest Winters	Driest Winters
1 68.8 in 1948-49	1 49.6 in 2009-10	1 21.20 in 1997-98	1 0.72 in 1949-50
2 68.5 in 1936-37	2 56.5 in 2010-11	2 16.61 in 1935-36	2 1.45 in 2000-01
3 67.4 in 1971-72	3 58.0 in 1977-78	3 14.21 in 1965-66	3 1.90 in 2011-12
4 67.3 in 2007-08	4 58.1 in 1980-81	4 14.16 in 1957-58	4 2.00 in 1948-49
5 66.4 in 1974-75	5 58.4 in 2002-03	5 13.26 in 1982-83	5 2.11 in 1938-39
6 66.2 in 1990-91	6 58.6 in 1969-70	6 12.58 in 1972-73	6 2.13 in 1934-35
7 66.0 in 2016-17	7 58.7 in 1976-77	7 12.15 in 1978-79	7 2.33 in 1975-76
8 65.9 in 1988-89	58.7 in 1939-40	8 11.65 in 2009-10	8 2.34 in 1984-85
9 65.8 in 1956-57	9 58.8 in 2003-04	9 11.53 in 2018-19	9 2.40 in 1999-00
10 65.7 in 1961-62	10 59.0 in 1963-64	10 11.48 in 2015-16	10 2.42 in 1943-44
...
48 62.4 in 2024-25	31 62.4 in 2024-25	57 5.12 in 2024-25	31 5.12 in 2024-25

Normal Temperature for Winter (Dec/Jan/Feb) at WAUF1 = 62.0°

Normal Rainfall for Winter (Dec/Jan/Feb) at WAUF1 = 6.60 in.

ARCHBOLD BIO STATION (records began in January 1969):

Warmest Februarys	Coolest Februarys	Wettest Februarys	Driest Februarys
1 71.3 in 2018	1 55.2 in 1978	1 10.85 in 1983	1 0.00 in 2001
2 69.8 in 2019	2 55.4 in 2010	2 8.28 in 1998	2 0.22 in 2011
3 69.3 in 2001	3 56.8 in 1980	3 5.00 in 2004	3 0.27 in 1999
4 68.9 in 1990	4 57.8 in 1969	4 4.73 in 1992	4 0.33 in 1989
68.9 in 1982	5 58.1 in 1973	5 4.32 in 2020	5 0.37 in 2000
6 68.6 in 1975	6 58.2 in 1970	6 3.86 in 2002	6 0.38 in 2009
7 68.5 in 2023	7 59.2 in 1988	7 3.57 in 1970	7 0.49 in 1975
8 68.2 in 2021	8 59.3 in 2009	8 3.51 in 2016	8 0.53 in 1977
9 68.1 in 1997	9 59.8 in 2006	9 3.46 in 1981	9 0.54 in 2023
10 67.3 in 2012	59.8 in 1977	10 3.31 in 2006	0.54 in 2018

Average Temperature for February 1-23, 2025 = 69.9°

Normal Temperature for February at ACHF1 = 64.2°

Total Rainfall for February 1-23, 2025 = 0.01 in.

Normal Rainfall for February at ACHF1 = 2.25 in.

Warmest Winters	Coolest Winters	Wettest Winters	Driest Winters
1 67.4 in 2016-17	1 57.0 in 1980-81	1 21.53 in 1997-98	1 0.64 in 2000-01
2 66.2 in 1971-72	2 57.4 in 1969-70	2 16.19 in 2015-16	2 1.44 in 1975-76
3 65.9 in 2019-20	3 58.1 in 1976-77	3 15.77 in 1982-83	3 1.77 in 1984-85
4 65.7 in 1974-75	4 58.2 in 1977-78	4 13.16 in 1978-79	4 2.04 in 2016-17
5 65.4 in 2022-23	5 58.5 in 2010-11	5 11.18 in 1969-70	5 2.22 in 2022-23
65.4 in 1990-91	6 58.6 in 2009-10	6 10.16 in 2003-04	6 2.43 in 2011-12
7 65.1 in 2015-16	7 60.0 in 2002-03	7 9.94 in 1972-73	7 2.64 in 2008-09
8 65.0 in 2017-18	60.0 in 1995-96	8 9.71 in 1994-95	8 2.68 in 1970-71
65.0 in 2007-08	9 60.2 in 1979-80	9 9.12 in 2018-19	9 3.44 in 1981-82
10 64.8 in 2018-19	10 60.4 in 2003-04	10 9.09 in 1977-78	10 3.48 in 2017-18
64.8 in 2012-13	60.4 in 1987-88		

Average Temp for Winter 2024-25 (Dec 1 - Feb 23) = 62.9°

Normal Temperature for Winter (Dec/Jan/Feb) at ACHF1 = 63.4°

Total Rainfall for Winter 2024-25 (Dec 1 - Feb 23) = 2.33 in.

Normal Rainfall for Winter (Dec/Jan/Feb) at ACHF1 = 6.46 in.

PUNTA GORDA AREA (Temperature records began in July 1914
and Rainfall records began in May 1914):

Warmest Februarys	Coolest Februarys	Wettest Februarys	Driest Februarys
1 74.4 in 1949	1 57.3 in 1958	1 12.11 in 1936	1 0.00 in 1950
2 73.2 in 2018	2 57.5 in 2010	2 11.05 in 1983	2 0.01 in 2001
3 71.2 in 1959	57.5 in 1978	3 5.68 in 1963	3 0.04 in 1938
71.2 in 1932	4 58.6 in 1968	4 5.61 in 1982	0.04 in 1932
5 70.8 in 2025	5 58.9 in 1980	5 5.59 in 1937	5 0.09 in 1929
70.8 in 2023	6 59.3 in 1942	6 5.26 in 1998	6 0.13 in 1999
70.8 in 2019	7 59.5 in 1969	7 4.88 in 1924	7 0.16 in 2023
8 70.7 in 1918	8 59.8 in 1973	8 4.62 in 1964	8 0.18 in 1974
9 70.6 in 1982	9 60.1 in 1920	9 4.50 in 1952	9 0.25 in 1918
70.6 in 1962	10 60.2 in 1970	10 4.41 in 1940	10 0.26 in 1945
	60.2 in 1947
		69 1.22 in 2025	39 1.22 in 2025

Normal Temperature for February at PGD = 65.5°
Normal Rainfall for February at PGD = 2.47 in.

Warmest Winters	Coolest Winters	Wettest Winters	Driest Winters
1 72.0 in 1948-49	1 59.1 in 1977-78	1 16.32 in 1935-36	1 0.58 in 1949-50
2 70.7 in 1931-32	2 59.3 in 1976-77	2 15.66 in 2015-16	2 0.62 in 2000-01
3 70.2 in 1949-50	59.3 in 1969-70	3 15.45 in 1997-98	3 1.24 in 1938-39
4 69.2 in 1932-33	4 59.7 in 2010-11	4 15.16 in 1982-83	4 1.55 in 1948-49
5 68.5 in 1956-57	5 59.9 in 1957-58	5 12.66 in 1925-26	5 1.67 in 2011-12
6 68.3 in 1961-62	6 60.0 in 1980-81	6 12.65 in 1940-41	6 1.87 in 1927-28
7 68.0 in 1971-72	60.0 in 1963-64	7 11.76 in 1977-78	7 2.08 in 1973-74
8 67.9 in 1936-37	8 60.5 in 1939-40	8 11.71 in 1930-31	8 2.13 in 1932-33
9 67.5 in 2022-23	9 60.6 in 1975-76	9 11.51 in 1978-79	9 2.20 in 1961-62
10 67.4 in 2016-17	60.6 in 1968-69	10 11.42 in 1958-59	10 2.26 in 2016-17
67.4 in 1946-47			...
...	...		21 2.98 in 2024-25
29 66.2 in 2024-25	66 66.2 in 2024-25		2.98 in 1993-94
66.2 in 2011-12	66.2 in 2011-12		
66.2 in 2006-07	66.2 in 2006-07		
66.2 in 1933-34	66.2 in 1933-34		

Normal Temperature for Winter (Dec/Jan/Feb) at PGD = 64.8°
Normal Rainfall for Winter (Dec/Jan/Feb) at PGD = 6.78 in.

FORT MYERS AREA (records began in January 1902):

Warmest Februarys	Coolest Februarys	Wettest Februarys	Driest Februarys
1 74.9 in 2018	1 55.5 in 1958	1 10.82 in 1983	1 Trace in 2001
2 73.6 in 2023	2 57.2 in 1978	2 7.12 in 1998	Trace in 1944
3 72.9 in 2019	3 58.8 in 1947	3 6.79 in 1902	Trace in 1911
4 72.3 in 1997	4 59.2 in 1902	4 5.93 in 1934	4 0.06 in 1948
5 72.2 in 1982	5 59.4 in 2010	5 5.50 in 1936	5 0.07 in 2023
6 72.1 in 2025	59.4 in 1942	6 5.13 in 1913	0.07 in 1949
7 71.8 in 1949	7 59.9 in 1968	7 4.65 in 1963	7 0.08 in 1950
8 71.4 in 2017	8 60.0 in 1912	8 4.34 in 1952	0.08 in 1929
71.4 in 2001	9 60.1 in 1970	9 4.00 in 1940	9 0.10 in 1908
10 71.3 in 1990	10 60.4 in 1941	10 3.89 in 1992	10 0.11 in 2000
			0.11 in 1943
	
		59 1.69 in 2025	66 1.69 in 2025

Normal Temperature for February at FMY = 67.3°

Normal Rainfall for February at FMY = 1.78 in.

Warmest Winters	Coolest Winters	Wettest Winters	Driest Winters
1 70.9 in 2016-17	1 58.2 in 1957-58	1 18.71 in 2015-16	1 0.45 in 2000-01
2 70.7 in 1931-32	2 59.7 in 1969-70	2 15.59 in 1982-83	2 0.71 in 1948-49
3 70.3 in 2022-23	3 59.8 in 1976-77	3 15.19 in 1997-98	3 0.80 in 1910-11
4 70.1 in 1948-49	4 60.0 in 1977-78	4 13.74 in 1978-79	4 1.14 in 1984-85
5 69.8 in 1971-72	5 61.3 in 1980-81	5 12.26 in 1940-41	5 1.21 in 1926-27
6 69.7 in 2021-22	61.3 in 1939-40	6 12.02 in 1925-26	6 1.42 in 1974-75
7 69.6 in 2019-20	7 61.5 in 1963-64	7 11.65 in 2023-24	7 1.43 in 1904-05
8 69.4 in 1990-91	61.5 in 1950-51	8 11.51 in 2003-04	8 1.47 in 1928-29
9 69.1 in 1936-37	61.5 in 1903-04	9 11.06 in 1902-03	9 1.50 in 1961-62
10 69.0 in 2007-08	10 61.6 in 1930-31	10 10.85 in 1957-58	10 1.53 in 1938-39
...
32 66.9 in 2024-25	88 66.9 in 2024-25	78 3.64 in 2024-25	45 3.64 in 2024-25
66.9 in 2015-16	66.9 in 2015-16		
66.9 in 1961-62	66.9 in 1961-62		
66.9 in 1938-39	66.9 in 1938-39		
66.9 in 1929-30	66.9 in 1929-30		

Normal Temperature for Winter (Dec/Jan/Feb) at FMY = 66.4°

Normal Rainfall for Winter (Dec/Jan/Feb) at FMY = 6.11 in.

For more local climate information, please visit our web page at <https://www.weather.gov/tampabay> and look within the "Climate and Past Weather" drop down menu above the map of the area.