



NOAA - National Weather Service

Tampa Bay Area

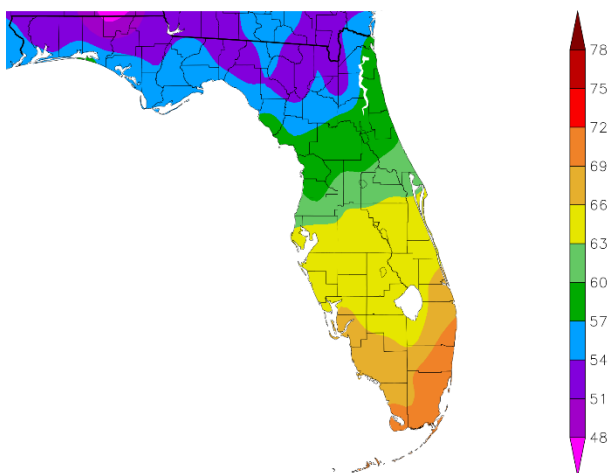
2525 14th Avenue SE, Ruskin, Florida 33570

813-645-2323 <https://weather.gov/tampabay>

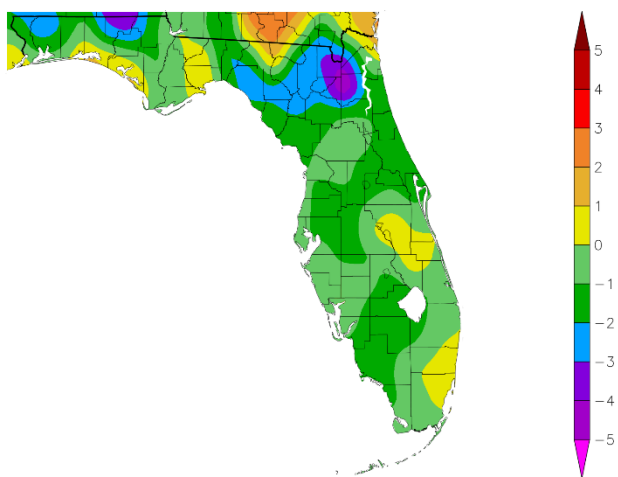
Preliminary December and 2024 Climate Summary for West Central and Southwest Florida

In December 2024 we've seen a series of cold fronts move across the region with temperatures warming up ahead of them and then falling for a few days behind each. Overall, for the month, temperatures are averaging near to about 2 degrees below normal.

Temperature (F)
12/1/2024 - 12/28/2024

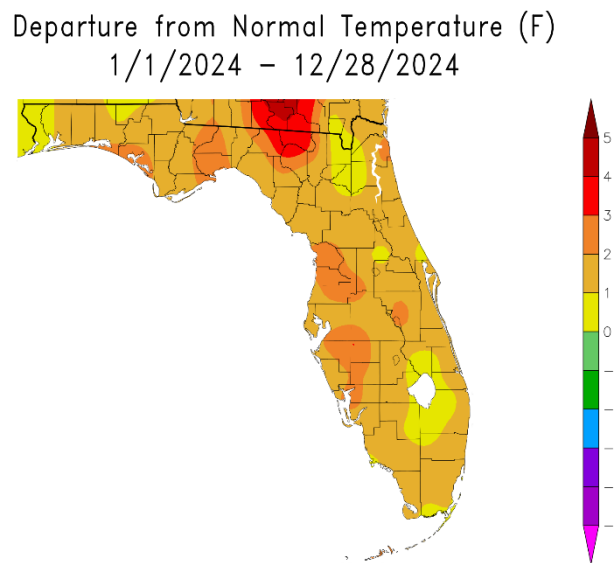
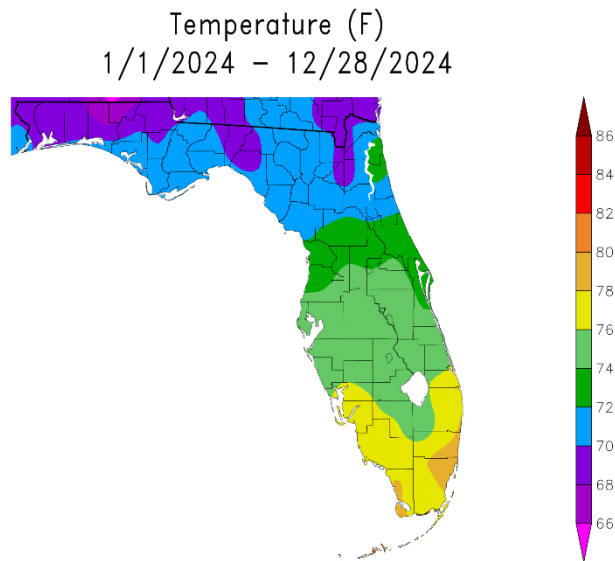


Departure from Normal Temperature (F)
12/1/2024 - 12/28/2024



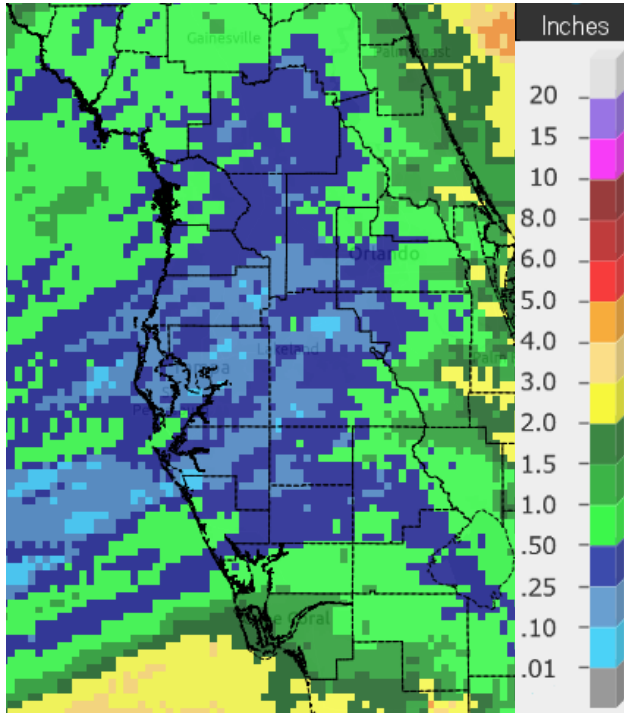
Graphics Source: NOAA Regional Climate Centers

As for 2024, it has been a rather warm year with temperatures averaging about 1 to 2 degrees above normal which could place some of the official NWS sites in the Top Ten Warmest since records began.

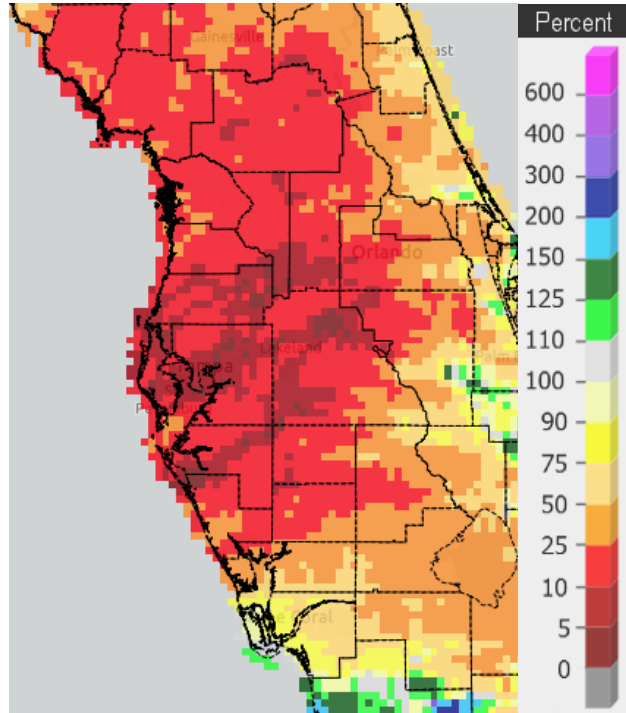


Graphics Source: NOAA Regional Climate Centers

Taking a look at rainfall, December has seen limited amounts with most of the area less than 50 percent of normal for the month.

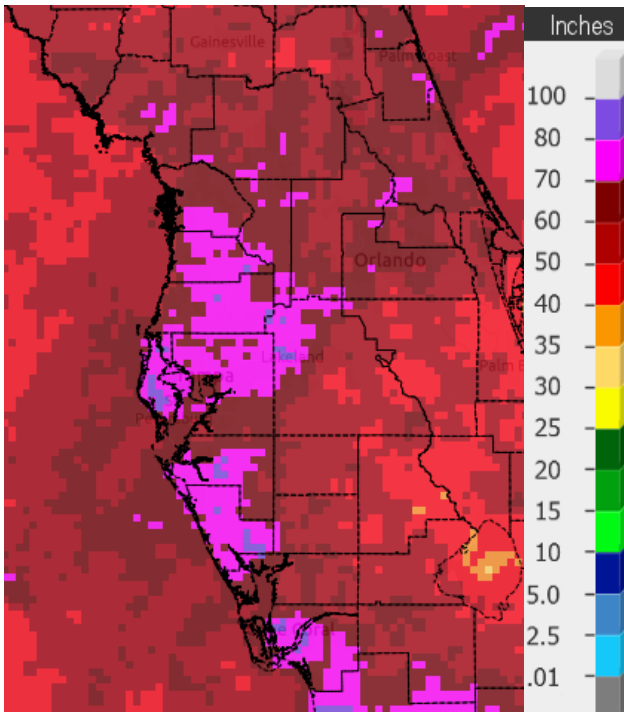


December 1-28, 2024 Rainfall

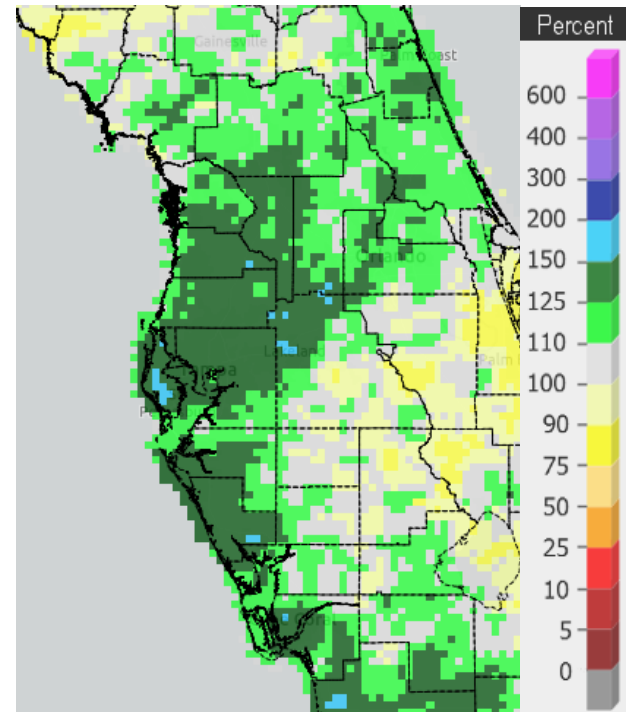


Percent of Normal

As for 2024, much of the region has seen above normal rainfall (green/blue areas on right map below), especially across the Nature Coast and coastal counties from around the Tampa Bay area southward. Some interior areas however are running slightly below normal (yellow areas on right map below).



Jan 1-Dec 28, 2024 Rainfall



Percent of Normal

On the following pages are tables of the Top Ten Warmest, Coolest, Wettest, and Driest Decembers and Years at some official NWS locations, which include the average/total so far for this December and 2024 where available, and the 1991-2020 Normal temperature and rainfall for the month of December and Annually.

CHIEFLAND 5 ESE (Records began in July 1956):

Warmest Decembers		Coolest Decembers		Wettest Decembers		Driest Decembers	
1	65.0 in 2021	1	47.7 in 2010	1	11.85 in 2018	1	0.00 in 1956
2	64.7 in 1971	2	48.0 in 1963	2	9.84 in 1964	2	0.04 in 2015
3	63.7 in 1998	3	50.2 in 1989	3	9.68 in 1997	3	0.42 in 2001
4	63.7 in 1984	4	51.3 in 1960	4	8.55 in 2023		0.42 in 1984
5	62.1 in 1982	5	52.2 in 2005	5	8.39 in 2005	5	0.51 in 2011
6	61.9 in 1990	6	52.3 in 2003	6	7.77 in 1996	6	0.66 in 2010
7	61.6 in 1956	7	52.5 in 1993	7	7.47 in 2019	7	0.71 in 2021
8	61.5 in 2001	8	52.9 in 1980	8	6.66 in 1967	8	0.72 in 1980
9	61.4 in 2006	9	53.0 in 1985	9	6.52 in 1983	9	0.78 in 1985
	61.4 in 1991		53.0 in 1968	10	6.20 in 1969	10	0.80 in 1994

Average Temperature for Dec 1-28, 2024 = 56.5°
 Normal Temperature for December at CHIF1 = 57.4°

Total Rainfall for Dec 1-28, 2024 = 0.27 inches
 Normal Rainfall for December at CHIF1 = 3.25 inches

Warmest Years		Coolest Years		Wettest Years		Driest Years	
1	72.0 in 1998	1	66.5 in 2010	1	99.47 in 1964	1	40.77 in 2008
2	71.8 in 2020	2	67.0 in 1969	2	77.29 in 1959	2	41.70 in 2011
3	71.6 in 1990	3	67.4 in 1963	3	76.86 in 2018	3	41.85 in 2000
4	71.5 in 2018	4	67.7 in 1966	4	74.06 in 2004	4	43.05 in 2006
5	71.3 in 2023	5	68.0 in 1976	5	70.31 in 1996	5	45.45 in 1990
6	71.1 in 1991	6	68.2 in 1958	6	69.40 in 1983	6	45.90 in 2022
7	70.8 in 1982	7	68.4 in 2000	7	68.98 in 1965	7	46.69 in 2007
8	70.6 in 2021		68.4 in 1962	8	67.91 in 1982	8	47.05 in 1999
9	70.5 in 2022	9	68.5 in 1996	9	67.59 in 1966	9	48.04 in 1977
10	70.4 in 1975		68.5 in 1977	10	67.33 in 1957	10	49.21 in 1972

Average Temperature for Jan 1-Dec 28, 2024 = 70.8°
 Normal Temperature for the Year at CHIF1 = 69.2°

Total Rainfall for Jan 1-Dec 28, 2024 = 51.36 inches
 Normal Rainfall for the Year at CHIF1 = 57.10 inches

INVERNESS 3 SE (Records began in July 1948):

Warmest Decembers	Coollest Decembers	Wettest Decembers	Driest Decembers
1 69.1 in 2015	1 47.7 in 2010	1 11.23 in 2018	1 0.11 in 1984
2 67.0 in 1948	2 50.1 in 1989	2 10.46 in 1997	2 0.14 in 2011
3 66.8 in 1971	3 52.4 in 2002	3 7.80 in 1953	3 0.26 in 1956
4 66.3 in 2016	4 54.1 in 2005	4 6.64 in 2002	4 0.42 in 1998
5 65.4 in 2021	5 54.3 in 1963	5 6.37 in 1973	5 0.50 in 2016
6 65.3 in 1949	6 54.4 in 1993	6 5.40 in 1969	6 0.63 in 2001
7 64.9 in 1967	7 55.0 in 1960	7 5.30 in 1977	7 0.73 in 2010
8 64.4 in 1956	8 55.4 in 2000	8 5.23 in 1972	8 0.75 in 1961
64.4 in 1951	9 55.5 in 2003	9 5.08 in 2023	9 0.77 in 2021
10 64.3 in 2007	10 55.9 in 1997	10 5.05 in 1981	10 0.79 in 1990

Average Temperature for Dec 1-27, 2024 = 58.5°
Normal Temperature for December at INVf1 = 59.0

Total Rainfall for Dec 1-27, 2024 = 0.10 inches
Normal Rainfall for December at INVf1 = 2.48 inches

Warmest Years	Coollest Years	Wettest Years	Driest Years
1 73.4 in 2015	1 68.8 in 1988	1 87.00 in 1960	1 35.66 in 1999
2 73.0 in 2020	2 68.9 in 2010	2 77.45 in 2021	2 36.50 in 1956
3 72.8 in 1949	3 69.0 in 1996	3 76.21 in 1953	3 37.34 in 1990
4 72.6 in 1953	4 69.3 in 1995	4 75.47 in 1982	4 38.22 in 2000
5 72.4 in 2022	5 69.4 in 2005	5 69.77 in 1959	5 40.35 in 2006
6 72.3 in 2019	6 69.6 in 1992	6 68.72 in 1964	6 42.22 in 1998
7 72.2 in 1975	7 69.7 in 1993	7 68.65 in 2018	7 43.28 in 1955
72.2 in 1974	8 69.8 in 1981	8 65.24 in 1958	8 44.24 in 1961
72.2 in 1959	68.8 in 1977	9 63.25 in 2002	9 44.29 in 1954
72.2 in 1957	10 69.9 in 2001	10 62.76 in 1992	10 45.17 in 2013

Average Temperature for Jan 1-Dec 27, 2024 = 72.5°
Normal Temperature for the Year at INVf1 = 69.8°

Total Rainfall for Jan 1-Dec 27, 2024 = 59.49 inches
Normal Rainfall for the Year at INVf1 = 52.39 inches

BROOKSVILLE AREA (Records began in January 1892):

Warmest Decembers	Coollest Decembers	Wettest Decembers	Driest Decembers
1 70.5 in 2015	1 47.9 in 2010	1 10.10 in 1997	1 0.01 in 1955
2 70.1 in 1931	2 53.9 in 1935	2 9.23 in 2018	2 0.04 in 2015
3 68.6 in 1971	3 54.3 in 2003	3 8.30 in 1930	3 0.08 in 2011
4 67.1 in 1948	4 54.4 in 1989	4 8.10 in 1953	4 0.21 in 1908
5 66.8 in 2021	5 54.7 in 2005	5 6.91 in 1925	5 0.27 in 1910
66.8 in 1926	54.7 in 1903	6 6.40 in 1969	6 0.32 in 1946
7 66.5 in 1932	7 54.8 in 1930	7 6.38 in 1983	0.32 in 1932
8 66.4 in 1982	8 54.9 in 1963	8 5.99 in 2002	8 0.33 in 1956
9 66.3 in 1940	9 55.3 in 1985	9 5.68 in 1973	9 0.37 in 1992
10 66.2 in 1933	10 55.4 in 1910	10 5.60 in 1905	0.37 in 1990

Average Temperature for Dec 1-28, 2024 = 59.1°

Normal Temperature for December at BKV = 60.3°

Total Rainfall for Dec 1-28, 2024 = 0.18 inches

Normal Rainfall for December at BKV = 2.56 inches

Warmest Years	Coollest Years	Wettest Years	Driest Years
1 74.3 in 1927	1 67.9 in 2010	1 80.17 in 1959	1 35.63 in 2010
2 73.7 in 1929	2 68.7 in 1920	2 79.39 in 1912	2 36.58 in 2000
3 73.6 in 2015	3 69.4 in 2000	3 77.49 in 1960	3 37.46 in 1954
73.6 in 1933	4 69.5 in 2004	4 75.09 in 1945	4 37.83 in 1927
5 73.4 in 2020	5 69.6 in 2003	5 72.34 in 1982	5 38.08 in 1955
6 73.3 in 1948	6 69.7 in 2005	6 71.91 in 1928	6 38.20 in 1931
7 73.1 in 2023	7 69.9 in 1894	7 71.35 in 1964	7 39.62 in 2006
8 73.0 in 2019	8 70.0 in 2008	8 70.98 in 1995	8 40.48 in 1951
9 72.9 in 1949	9 70.1 in 1999	9 70.12 in 1906	9 40.70 in 1977
72.9 in 1939	70.1 in 1924	10 69.70 in 1983	10 41.10 in 1956

Average Temperature for Jan 1-Dec 28, 2024 = 72.8°

Normal Temperature for the Year at BKV = 70.7°

Total Rainfall for Jan 1-Dec 28, 2024 = 61.38 inches

Normal Rainfall for the Year at BKV = 51.94 inches

ST LEO (Records began in April 1895):

Warmest Decembers		Coolest Decembers		Wettest Decembers		Driest Decembers	
1	70.6 in 2015	1	51.4 in 2010	1	13.99 in 1997	1	0.13 in 1984
2	69.6 in 1931	2	52.1 in 1935	2	10.68 in 2002		0.13 in 1906
3	68.0 in 2021	3	53.0 in 1930	3	9.17 in 2018	3	0.14 in 2016
4	67.7 in 2007	4	54.1 in 1903	4	7.50 in 1900	4	0.17 in 1933
5	67.6 in 1948	5	54.2 in 1910	5	7.43 in 1981	5	0.18 in 1938
6	67.5 in 2001	6	55.1 in 1917	6	6.83 in 1969	6	0.22 in 2011
	67.5 in 1984	7	56.6 in 1989	7	6.47 in 1983		0.22 in 1990
8	67.3 in 2006	8	56.7 in 1909	8	6.16 in 1953	8	0.23 in 1932
9	67.2 in 1998	9	57.0 in 1960	9	5.99 in 1907		0.23 in 1908
10	66.9 in 1982	10	57.2 in 1927	10	5.67 in 1930	10	0.31 in 1928
			57.2 in 1895				

Average Temperature for Dec 2024 = Not Available Yet
 Normal Temperature for December at STLF1 = 62.1°

Total Rainfall for Dec 2024 = Not Available Yet
 Normal Rainfall for December at STLF1 = 2.53 inches

Warmest Years		Coolest Years		Wettest Years		Driest Years	
1	74.5 in 1998	1	69.3 in 1930	1	81.93 in 1945	1	36.61 in 1961
2	74.4 in 1990	2	69.5 in 1920	2	80.06 in 1900	2	39.27 in 2000
	74.4 in 1948	3	69.6 in 2010	3	79.57 in 1953	3	40.49 in 1932
4	74.1 in 1982		69.6 in 1910	4	75.57 in 1983	4	41.37 in 1955
5	73.9 in 2007	5	69.9 in 1931	5	75.34 in 1960	5	41.69 in 1908
6	73.8 in 2020	6	70.0 in 1928	6	72.45 in 1982	6	42.02 in 1990
7	73.7 in 2006	7	70.2 in 1903	7	71.29 in 2003	7	42.62 in 1952
	73.7 in 1994	8	70.3 in 1968	8	70.41 in 1959	8	42.98 in 1980
	73.7 in 1949		70.3 in 1940	9	69.85 in 1934	9	43.44 in 2006
10	73.6 in 2023		70.3 in 1917	10	69.68 in 2002	10	43.47 in 1967
	73.6 in 1985						
	73.6 in 1946						

Average Temperature for 2024 = Not Available Yet
 Normal Temperature for the Year at STLF1 = 71.9°

Total Rainfall for 2024 = Not Available Yet
 Normal Rainfall for the Year at STLF1 = 53.46 inches

TARPON SPRINGS (Records began in January 1892):

Warmest Decembers	Coollest Decembers	Wettest Decembers	Driest Decembers
1 72.8 in 1931	1 50.9 in 2010	1 15.60 in 1997	1 0.02 in 1984
2 71.4 in 2015	2 53.1 in 1935	2 12.27 in 2002	2 0.12 in 2016
3 68.6 in 1971	3 53.3 in 1903	3 10.00 in 2018	3 0.14 in 1946
4 68.2 in 1998	4 53.6 in 1963	4 9.08 in 1983	4 0.17 in 1928
5 67.9 in 1982	5 55.0 in 1910	5 7.79 in 1969	5 0.19 in 2000
6 67.6 in 2016	6 55.6 in 1960	6 7.48 in 1973	6 0.20 in 1938
67.6 in 2001	55.6 in 1917	7 6.95 in 1953	7 0.25 in 1906
8 67.5 in 2021	8 55.9 in 1930	8 5.75 in 1930	8 0.28 in 1908
9 67.2 in 2007	9 56.3 in 1989	9 5.47 in 1989	9 0.31 in 2011
67.2 in 2006	10 56.5 in 2004	10 5.34 in 1907	10 0.35 in 1933
67.2 in 1992			

Average Temperature for Dec 1-27, 2024 = 62.8°

Normal Temperature for December at TRPF1 = 62.4°

Total Rainfall for Dec 1-27, 2024 = 0.28 inches

Normal Rainfall for December at TRPF1 = 2.74 inches

Warmest Years	Coollest Years	Wettest Years	Driest Years
1 74.9 in 2019	1 69.5 in 1895	1 83.20 in 1959	1 32.85 in 2007
2 74.8 in 1990	2 69.6 in 1910	2 77.78 in 1957	2 32.87 in 1956
3 74.7 in 1994	3 69.9 in 1963	3 74.81 in 1960	3 33.48 in 1927
4 74.6 in 2015	4 70.0 in 1940	4 73.83 in 1983	4 35.39 in 1952
5 74.4 in 2017	5 70.1 in 1892	5 68.67 in 2012	5 36.66 in 2003
74.4 in 1997	6 70.2 in 1968	6 67.64 in 1969	6 38.21 in 1967
74.4 in 1991	70.2 in 1896	7 67.43 in 2019	7 38.65 in 1907
8 74.2 in 1998	8 70.3 in 2010	8 67.00 in 1925	8 39.65 in 1902
9 74.1 in 1932	70.3 in 1969	9 66.98 in 1900	9 40.15 in 1908
10 74.0 in 2018	10 70.5 in 1958	10 66.61 in 1997	10 40.50 in 1976
74.0 in 1995	70.5 in 1904		
74.0 in 1927			
74.0 in 1922			

Average Temperature for Jan 1-Dec 28, 2024 = 74.5°

Normal Temperature for the Year at TRPF1 = 72.9°

Total Rainfall for Jan 1-Dec 28, 2024 = 59.92 inches

Normal Rainfall for the Year at TRPF1 = 54.29 inches

TAMPA AREA (Records began in April 1890):

Warmest Decembers	Coollest Decembers	Wettest Decembers	Driest Decembers
1 73.4 in 2015	1 53.2 in 2010	1 15.57 in 1997	1 0.07 in 1984
2 72.3 in 1931	2 54.5 in 1935	2 14.10 in 2002	2 0.09 in 1946
3 71.5 in 2021	3 54.9 in 1963	3 8.69 in 2018	0.09 in 1906
4 70.1 in 2016	4 55.5 in 1910	4 7.36 in 1907	4 0.13 in 1933
5 69.5 in 2006	5 55.8 in 1903	5 7.04 in 1941	5 0.19 in 2011
6 69.3 in 1971	6 56.1 in 1989	6 6.66 in 1950	0.19 in 1990
7 68.8 in 2001	7 56.7 in 1930	7 5.99 in 1930	7 0.20 in 1944
8 68.5 in 2013	8 56.8 in 1917	8 5.52 in 1973	8 0.21 in 1956
9 68.4 in 2007	9 57.5 in 1980	9 5.17 in 1969	9 0.29 in 1938
10 68.0 in 1998	57.5 in 1909	10 5.14 in 1905	10 0.30 in 1949
68.0 in 1948			

Average Temperature for Dec 1-28, 2024 = 63.9°

Normal Temperature for December at TPA = 64.9°

Total Rainfall for Dec 1-28, 2024 = 0.09 inches

Normal Rainfall for December at TPA = 2.56 inches

Warmest Years	Coollest Years	Wettest Years	Driest Years
1 76.4 in 2023	1 69.8 in 1968	1 76.57 in 1959	1 28.89 in 1956
76.4 in 2022	2 70.1 in 1901	2 70.43 in 1957	2 29.85 in 2000
3 76.3 in 2020	3 70.3 in 1910	3 67.71 in 1997	3 31.47 in 1977
76.3 in 2017	4 70.4 in 1981	4 67.19 in 1912	4 32.25 in 1908
5 76.2 in 2015	5 70.5 in 1969	5 66.93 in 1894	5 32.31 in 1984
6 76.1 in 2021	6 71.0 in 1976	6 66.65 in 1945	6 33.90 in 1974
7 75.8 in 2019	71.0 in 1966	7 66.46 in 1979	7 34.32 in 1999
8 75.6 in 2018	71.0 in 1940	8 65.95 in 1947	8 34.39 in 1990
9 75.3 in 1990	71.0 in 1895	9 65.44 in 1960	9 34.77 in 1927
10 75.2 in 2016	71.0 in 1892	10 63.82 in 1899	10 34.87 in 1944

Average Temperature for Jan 1-Dec 28, 2024 = 75.6°

Normal Temperature for the Year at TPA = 74.5°

Total Rainfall for Jan 1-Dec 28, 2024 = 79.60 inches

Normal Rainfall for the Year at TPA = 49.48 inches

ST PETERSBURG AREA (Records began in August 1914):

Warmest Decembers	Coollest Decembers	Wettest Decembers	Driest Decembers
1 74.2 in 1931	1 56.4 in 2010	1 17.41 in 2002	1 0.07 in 1984
2 71.9 in 1971	2 56.7 in 1989	2 14.62 in 1997	2 0.14 in 1949
3 71.0 in 2021	3 56.9 in 1935	3 7.00 in 1983	0.14 in 1938
4 70.6 in 2015	4 57.1 in 1963	4 6.77 in 1973	4 0.24 in 1990
5 69.7 in 1998	5 58.7 in 1930	5 6.67 in 1930	5 0.28 in 2016
6 69.5 in 2016	6 58.8 in 1917	6 6.45 in 1969	6 0.38 in 2015
69.5 in 1948	7 59.2 in 1962	7 6.03 in 1914	7 0.41 in 1924
8 69.4 in 2013	8 59.6 in 1950	8 5.92 in 1953	8 0.43 in 1932
9 69.3 in 2007	9 60.0 in 1954	9 5.84 in 2018	9 0.44 in 1946
10 69.2 in 2001	10 60.4 in 1944	10 5.49 in 1950	10 0.45 in 2011

Average Temperature for Dec 1-28, 2024 = 63.7°

Normal Temperature for December at SPG = 65.1°

Total Rainfall for Dec 1-28, 2024 = 0.22 inches

Normal Rainfall for December at SPG = 2.39 inches

Warmest Years	Coollest Years	Wettest Years	Driest Years
1 76.4 in 2020	1 71.8 in 1940	1 87.62 in 1959	1 30.41 in 1984
76.4 in 2015	2 72.3 in 1920	2 79.30 in 1953	2 32.57 in 1966
3 76.3 in 2023	3 72.4 in 1968	3 73.88 in 1957	3 33.54 in 2006
4 76.1 in 2017	72.4 in 1963	4 72.81 in 1997	4 33.63 in 2023
5 76.0 in 2021	5 72.5 in 1996	5 72.59 in 1947	5 34.01 in 1927
76.0 in 2003	6 72.6 in 1917	6 70.12 in 1954	6 34.88 in 1956
7 75.7 in 2005	7 72.7 in 1966	7 69.66 in 1988	7 36.34 in 1944
8 75.6 in 1946	72.7 in 1954	8 67.23 in 1922	8 36.40 in 2021
9 75.5 in 2012	72.7 in 1915	9 65.00 in 1952	9 36.52 in 2007
75.5 in 1972	10 72.8 in 1983	10 64.87 in 1995	10 36.62 in 1923
75.5 in 1933			
75.5 in 1932			

Average Temperature for Jan 1-Dec 28, 2024 = 76.5°

Normal Temperature for the Year at SPG = 74.7°

Total Rainfall for Jan 1-Dec 28, 2024 = Several Days Missing in Aug/Sep

Normal Rainfall for the Year at SPG = 46.65 inches

PLANT CITY (Records began in September 1892):

Warmest Decembers	Coollest Decembers	Wettest Decembers	Driest Decembers
1 73.0 in 2015	1 51.1 in 1935	1 14.75 in 1997	1 0.00 in 1908
2 70.6 in 1971	2 53.0 in 2010	2 9.63 in 2002	2 0.05 in 1906
3 70.5 in 2016	3 54.0 in 1930	3 7.94 in 2018	3 0.21 in 1932
4 69.7 in 2021	4 54.1 in 1910	4 7.62 in 1905	4 0.22 in 1984
5 69.6 in 1931	5 56.0 in 1989	5 6.57 in 1983	5 0.26 in 1987
6 68.9 in 1948	6 56.1 in 1963	6 6.47 in 1925	0.26 in 1917
7 68.4 in 2013	7 56.2 in 1903	7 6.14 in 1969	7 0.28 in 2016
8 67.9 in 1978	8 57.2 in 1915	8 6.06 in 1907	0.28 in 1962
9 67.7 in 2007	9 57.3 in 1901	9 6.04 in 1930	9 0.30 in 1933
10 67.6 in 1998	10 57.5 in 1917	10 5.80 in 1941	10 0.32 in 1956

Average Temperature for Dec 1-28, 2024 = 62.7°

Normal Temperature for December at PLCF1 = 65.0°

Total Rainfall for Dec 1-28, 2024 = 0.16 inches

Normal Rainfall for December at PLCF1 = 2.54 inches

Warmest Years	Coollest Years	Wettest Years	Driest Years
1 76.9 in 2023	1 69.2 in 1930	1 86.68 in 1959	1 32.96 in 1961
2 76.6 in 2020	2 69.4 in 1931	2 79.20 in 1947	2 36.36 in 1909
76.6 in 2019	3 69.8 in 1940	3 78.25 in 1960	3 37.24 in 1956
4 75.8 in 2021	4 70.4 in 1928	4 76.88 in 2004	4 39.17 in 1977
5 75.7 in 2022	5 70.6 in 1942	5 75.82 in 1953	5 39.29 in 2007
6 75.3 in 2015	70.6 in 1935	6 71.97 in 1983	6 39.48 in 1981
7 75.0 in 2016	7 70.8 in 2010	7 71.76 in 1933	7 39.74 in 1990
8 74.9 in 2018	70.8 in 1926	8 70.65 in 1957	8 40.41 in 1927
9 74.2 in 1948	9 70.9 in 1976	9 69.35 in 1905	9 40.49 in 1908
10 74.1 in 1990	70.9 in 1932	10 68.88 in 2018	10 42.38 in 2000
74.1 in 1911			

Average Temperature for Jan 1-Dec 28, 2024 = 76.2°

Normal Temperature for the Year at PLCF1 = 74.3°

Total Rainfall for Jan 1-Dec 28, 2024 = 69.71 inches

Normal Rainfall for the Year at PLCF1 = 56.11 inches

LAKELAND AREA (Records began in January 1915):

Warmest Decembers	Coollest Decembers	Wettest Decembers	Driest Decembers
1 73.1 in 2015	1 53.2 in 2010	1 12.28 in 1997	1 Trace in 1917
2 72.8 in 1931	2 54.8 in 1935	2 11.74 in 2002	2 0.09 in 1944
3 70.2 in 2016	3 56.2 in 1963	3 8.13 in 2018	3 0.10 in 1924
4 70.0 in 1971	4 56.8 in 1989	4 7.04 in 1983	4 0.12 in 1938
5 69.1 in 2021	5 57.3 in 1960	5 6.15 in 1930	5 0.14 in 1962
6 68.6 in 2013	6 57.9 in 1930	6 6.09 in 1925	6 0.17 in 1987
7 68.4 in 2007	7 58.2 in 1950	7 5.51 in 1989	7 0.30 in 1932
8 68.0 in 1922	8 58.4 in 1954	8 5.33 in 1941	8 0.34 in 1984
9 67.9 in 2001	9 58.9 in 1980	9 5.21 in 1949	9 0.35 in 1990
10 67.8 in 1998	10 59.0 in 1969	10 4.53 in 1950	10 0.36 in 1943
	59.0 in 1944		0.36 in 1933

Average Temperature for Dec 1-28, 2024 = 63.4°

Normal Temperature for December at LLDF1 = 64.8°

Total Rainfall for Dec 1-28, 2024 = 0.27 inches

Normal Rainfall for December at LLDF1 = 2.61 inches

Warmest Years	Coollest Years	Wettest Years	Driest Years
1 76.0 in 2023	1 70.6 in 1968	1 78.15 in 2018	1 34.93 in 1927
2 75.7 in 2020	2 70.9 in 1969	2 70.24 in 1959	2 35.83 in 1961
75.7 in 2015	3 71.0 in 1966	3 69.72 in 1979	3 36.30 in 1954
4 75.6 in 2019	71.0 in 1958	4 68.82 in 2017	4 37.36 in 1985
75.6 in 1990	71.0 in 1940	5 67.13 in 1994	5 37.80 in 1967
6 75.3 in 2021	6 71.2 in 1970	6 66.92 in 2005	6 38.06 in 1962
7 75.2 in 2017	7 71.4 in 1960	7 66.58 in 2002	7 38.26 in 2000
75.2 in 1994	71.4 in 1920	8 66.13 in 2004	8 38.29 in 1972
9 75.0 in 2022	9 71.5 in 1963	9 65.42 in 1960	9 39.43 in 1990
10 74.8 in 2016	10 71.6 in 2010	10 63.79 in 1919	10 39.57 in 1984
74.8 in 1991			39.57 in 1981
			39.57 in 1942

Average Temperature for Jan 1-Dec 28, 2024 = 75.5°

Normal Temperature for the Year at LLDF1 = 73.9°

Total Rainfall for Jan 1-Dec 28, 2024 = 72.45 inches

Normal Rainfall for the Year at LLDF1 = 56.82 inches

WINTER HAVEN AREA (Records began in March 1941):

Warmest Decembers	Coollest Decembers	Wettest Decembers	Driest Decembers
1 72.4 in 2015	1 52.7 in 2010	1 12.52 in 2002	1 0.03 in 1987
2 70.8 in 1971	2 55.5 in 1963	2 9.79 in 1997	0.03 in 1984
3 70.3 in 2021	3 57.4 in 1989	3 6.91 in 2018	3 0.07 in 1990
4 69.5 in 1948	4 59.1 in 1962	4 6.44 in 1983	4 0.21 in 1956
5 69.2 in 2016	59.1 in 1960	5 5.35 in 1989	5 0.23 in 1962
6 68.4 in 1946	6 59.2 in 1968	6 4.75 in 1991	6 0.29 in 1944
7 68.1 in 1984	7 59.3 in 1950	7 3.88 in 1947	7 0.33 in 2011
8 68.0 in 2007	8 59.8 in 1944	8 3.87 in 1950	8 0.40 in 1991
68.0 in 1991	9 59.9 in 2000	9 3.77 in 1941	0.40 in 1968
68.0 in 1986	10 60.1 in 2003	10 3.63 in 1969	10 0.47 in 1943
	60.1 in 1952		

Average Temperature for Dec 1-28, 2024 = 64.2°

Normal Temperature for December at GIF = 64.6°

Total Rainfall for Dec 1-28, 2024 = 0.22 inches

Normal Rainfall for December at GIF = 2.68 inches

Warmest Years	Coollest Years	Wettest Years	Driest Years
1 76.6 in 2019	1 70.2 in 1968	1 73.28 in 1959	1 30.35 in 2000
2 76.2 in 2015	2 71.1 in 1981	2 69.61 in 1960	2 31.95 in 2006
3 76.1 in 2020	3 71.2 in 1963	3 65.94 in 1957	3 32.73 in 2009
4 75.8 in 1989	4 71.4 in 1977	4 65.09 in 1947	4 35.26 in 1985
5 75.7 in 1991	71.4 in 1969	5 64.90 in 1948	5 36.78 in 2007
6 75.4 in 2023	6 71.6 in 2010	6 63.55 in 1953	6 36.89 in 1980
7 75.3 in 2021	71.6 in 1958	7 62.94 in 1983	7 39.02 in 2021
8 75.1 in 2018	8 71.9 in 1962	8 62.73 in 1994	8 39.06 in 2017
75.1 in 2017	71.9 in 1960	9 62.10 in 1982	9 39.51 in 1972
10 75.0 in 1990	10 72.0 in 1966	10 61.77 in 2002	10 39.81 in 1961

Average Temperature for Jan 1-Dec 28, 2024 = 75.8°

Normal Temperature for the Year at GIF = 74.6°

Total Rainfall for Jan 1-Dec 28, 2024 = 46.85 inches

Normal Rainfall for the Year at GIF = 46.12 inches

** Rainfall was missing on October 10, 2024, but radar and surrounding observations only indicate that 0.25 inch or less fell on this day.*

BARTOW (Records began in June 1892):

Warmest Decembers	Coollest Decembers	Wettest Decembers	Driest Decembers
1 72.4 in 2015	1 53.2 in 2010	1 13.31 in 2002	1 0.00 in 1906
2 71.0 in 2013	2 54.1 in 1910	2 11.38 in 1983	2 0.05 in 1932
3 69.2 in 1948	3 54.4 in 1903	3 10.70 in 1997	3 0.08 in 1933
4 69.0 in 2016	4 55.9 in 1915	4 8.25 in 1905	4 0.15 in 1944
69.0 in 2001	5 57.1 in 1909	5 6.45 in 2018	5 0.23 in 1962
69.0 in 1971	6 57.3 in 1963	6 6.35 in 1900	6 0.24 in 1987
7 68.5 in 2021	7 57.4 in 1954	7 5.50 in 1925	0.24 in 1956
8 68.4 in 1998	8 57.6 in 1989	8 5.25 in 1942	8 0.27 in 1990
9 68.2 in 2006	9 58.4 in 1960	9 5.14 in 1930	9 0.28 in 1984
10 67.8 in 1986	10 59.0 in 2020	10 5.07 in 1989	10 0.29 in 1946

Average Temperature for Dec 2024 = Not Available Yet
Normal Temperature for December at BARF1 = 63.6°

Total Rainfall for Dec 2024 = Not Available Yet
Normal Rainfall for December at BARF1 = 2.16 inches

Warmest Years	Coollest Years	Wettest Years	Driest Years
1 74.9 in 1998	1 70.8 in 1901	1 83.44 in 1959	1 34.10 in 2007
2 74.8 in 2023	2 71.2 in 1968	2 77.99 in 1983	2 35.87 in 2000
3 74.6 in 2020	71.2 in 1914	3 73.96 in 1930	3 36.43 in 1927
74.6 in 2012	4 71.3 in 1896	4 73.85 in 1960	4 37.19 in 1950
5 74.5 in 2019	5 71.5 in 1893	5 73.72 in 1957	5 37.51 in 2006
6 74.4 in 2017	6 71.6 in 1976	6 73.58 in 1947	6 40.72 in 1990
7 74.1 in 2021	71.6 in 1970	7 71.44 in 2002	7 41.00 in 1916
74.1 in 1997	71.6 in 1963	8 71.29 in 1924	8 41.41 in 1955
74.1 in 1982	71.6 in 1913	9 69.90 in 1903	9 42.29 in 1999
10 74.0 in 2022	10 71.9 in 1981	10 68.74 in 2022	10 42.48 in 1974
	71.9 in 1979		
	71.9 in 1956		
	71.9 in 1912		

Average Temperature for 2024 = Not Available Yet
Normal Temperature for the Year at BARF1 = 73.1°

Total Rainfall for 2024 = Not Available Yet
Normal Rainfall for the Year at BARF1 = 50.88 inches

SARASOTA-BRADENTON AREA (Records began in January 1911):

Warmest Decembers	Coollest Decembers	Wettest Decembers	Driest Decembers
1 72.8 in 2015	1 53.0 in 2010	1 11.94 in 1997	1 0.00 in 1933
2 71.2 in 1931	2 54.9 in 1935	2 11.63 in 2002	2 0.03 in 1949
3 69.8 in 1971	3 56.8 in 1930	3 8.10 in 2018	3 0.17 in 2011
4 69.5 in 2006	4 57.4 in 1963	4 6.86 in 1914	4 0.19 in 1962
5 69.3 in 2021	5 58.0 in 1917	5 6.71 in 1977	5 0.21 in 2013
6 69.3 in 2016	6 58.4 in 1915	6 6.23 in 1983	6 0.24 in 1984
7 69.1 in 2013	7 58.7 in 1989	7 6.21 in 1930	7 0.28 in 1923
8 68.8 in 2007	8 58.7 in 1976	8 5.80 in 1958	8 0.31 in 1938
9 68.7 in 2019	9 59.0 in 1944	9 5.72 in 1913	9 0.34 in 1946
10 68.6 in 1948	10 59.4 in 1985 59.4 in 1980	10 5.58 in 1953	10 0.36 in 1932

Average Temperature for Dec 1-28, 2024 = 65.0°

Normal Temperature for December at SRQ = 65.2°

Total Rainfall for Dec 1-28, 2024 = 0.07 inches

Normal Rainfall for December at SRQ = 2.33 inches

Warmest Years	Coollest Years	Wettest Years	Driest Years
1 76.3 in 2020	1 70.6 in 1977	1 82.98 in 1957	1 27.13 in 2023
2 76.2 in 2019	2 70.6 in 1976	2 78.59 in 1959	2 29.45 in 1944
3 76.1 in 2023	3 70.6 in 1940	3 78.33 in 1997	3 31.98 in 1956
4 75.3 in 2016	4 70.9 in 2010	4 77.50 in 1912	4 32.19 in 1951
5 75.2 in 2015	5 70.9 in 1981	5 73.49 in 1960	5 33.23 in 2009
6 75.2 in 1990	6 70.9 in 1968	6 72.21 in 1922	6 34.00 in 1923
7 74.8 in 2021	7 70.9 in 1930	7 68.52 in 1943	7 34.32 in 2008
8 74.7 in 2022	8 71.0 in 1931	8 68.02 in 1983	8 36.97 in 1950
9 74.6 in 2017	9 71.0 in 1915	9 67.46 in 1958	9 37.45 in 2000
10 74.5 in 1994	10 71.1 in 1928	10 67.01 in 1928	10 38.87 in 1973

Average Temperature for Jan 1-Dec 28, 2024 = 75.1°

Normal Temperature for the Year at SRQ = 74.1°

Total Rainfall for Jan 1-Dec 28, 2024 = *77.96 inches

Normal Rainfall for the Year at SRQ = 49.05 inches

* Rainfall was missing on August 5th and October 10th at Sarasota-Bradenton due to equipment failure. Radar estimates and local rain gauges indicate that an additional 3 to 5 inches of rain fell on these days which could have made this the Wettest Year on record.

VENICE (Records began in May 1955):

Warmest Decembers	Coollest Decembers	Wettest Decembers	Driest Decembers
1 73.1 in 1987	1 54.8 in 2010	1 9.48 in 1997	1 0.04 in 2016
2 72.9 in 2015	2 57.7 in 1989	2 7.39 in 2018	2 0.07 in 2011
3 70.9 in 1971	3 57.9 in 1963	3 6.50 in 1983	3 0.10 in 2014
4 70.7 in 2016	4 59.4 in 1976	4 6.00 in 2002	4 0.13 in 2013
5 70.2 in 2021	59.4 in 1960	5 5.34 in 2009	0.13 in 1991
6 69.3 in 1998	6 59.7 in 1981	6 5.25 in 1986	6 0.18 in 1987
7 69.1 in 2011	7 60.1 in 2003	7 4.94 in 2003	7 0.33 in 1962
8 68.6 in 1982	60.1 in 1962	8 4.16 in 1958	8 0.44 in 1984
9 68.3 in 2006	9 60.2 in 1975	9 4.12 in 1989	9 0.50 in 2021
10 68.2 in 2001	10 60.5 in 1973	10 3.85 in 1979	10 0.60 in 2001

Average Temperature for Dec 1-28, 2024 = 64.2°

Normal Temperature for December at VNCF1 = 64.9°

Total Rainfall for Dec 1-28, 2024 = 0.43 inches

Normal Rainfall for December at VNCF1 = 2.31 inches

Warmest Years	Coollest Years	Wettest Years	Driest Years
1 76.3 in 2023	1 70.9 in 1981	1 75.08 in 1995	1 29.07 in 1990
2 76.0 in 2012	2 71.2 in 1977	2 74.15 in 1957	2 29.72 in 2023
3 75.9 in 2095	3 71.8 in 1962	3 73.28 in 1959	3 32.46 in 2007
4 75.7 in 2015	4 71.9 in 1978	4 72.40 in 1983	4 35.52 in 1985
75.7 in 1998	5 72.0 in 1969	5 65.46 in 2003	5 36.50 in 1961
6 75.6 in 2011	72.0 in 1960	6 63.35 in 2005	6 36.69 in 1956
7 75.3 in 2020	7 72.1 in 1966	7 63.13 in 1992	7 37.23 in 1981
8 75.1 in 1997	72.1 in 1963	8 62.98 in 1969	8 38.45 in 2021
75.1 in 1994	72.1 in 1956	9 61.25 in 2017	9 38.50 in 2009
10 75.0 in 2017	10 72.3 in 1970	10 59.17 in 1982	10 39.49 in 2019

Average Temperature for Jan 1-Dec 28, 2024 = 75.7°

Normal Temperature for the Year at VNCF1 = 73.7°

Total Rainfall for Jan 1-Dec 28, 2024 = 66.45 inches

Normal Rainfall for the Year at VNCF1 = 51.27 inches

MYAKKA RIVER STATE PARK (Temperature records began in March 1956
and Rainfall records began in Sep 1943):

Warmest Decembers	Coollest Decembers	Wettest Decembers	Driest Decembers
1 73.3 in 2015	1 53.4 in 2010	1 10.89 in 1997	1 0.03 in 1949
2 70.8 in 2016	2 55.9 in 1969	2 9.65 in 2002	2 0.10 in 1991
3 69.4 in 2013	3 57.0 in 1989	3 8.20 in 1983	3 0.16 in 1961
4 69.3 in 1998	4 57.2 in 1960	4 7.59 in 2018	4 0.17 in 2011
5 69.2 in 1971	5 57.3 in 1962	5 6.32 in 1958	5 0.19 in 1987
6 69.1 in 2006	6 58.7 in 1968	6 6.06 in 2009	6 0.22 in 2013
7 68.7 in 2007	7 59.1 in 1957	7 5.97 in 1977	0.22 in 1962
8 68.1 in 1982	8 59.9 in 2002	8 5.48 in 2003	8 0.25 in 1956
9 68.0 in 1991	9 60.0 in 2020	9 5.00 in 2015	9 0.29 in 1943
10 67.9 in 1992	60.0 in 1973	10 4.23 in 1989	10 0.36 in 1984
67.9 in 1986			

Average Temperature for Dec 2024 = Not Available Yet
Normal Temperature for December at MKCF1 = 64.8°

Total Rainfall for Dec 2024 = Not Available Yet
Normal Rainfall for December at MKCF1 = 2.51 inches

Warmest Years	Coollest Years	Wettest Years	Driest Years
1 76.0 in 2015	1 70.6 in 1962	1 82.31 in 1995	1 36.97 in 1961
2 75.5 in 2019	2 71.3 in 1958	2 80.36 in 1983	2 38.15 in 1956
3 75.2 in 1997	3 71.6 in 1970	3 78.82 in 2018	3 38.24 in 1955
4 75.0 in 1990	71.6 in 1960	4 77.59 in 1959	4 39.15 in 1944
5 74.8 in 1982	5 71.8 in 2010	5 76.72 in 1982	5 42.29 in 1950
6 74.6 in 2016	71.8 in 1977	6 76.60 in 2003	6 42.54 in 1946
74.6 in 1994	7 72.1 in 1981	7 76.52 in 1998	7 44.03 in 1985
8 74.5 in 2018	72.1 in 1976	8 76.04 in 1997	8 44.10 in 1986
74.5 in 1999	72.1 in 1973	9 75.62 in 1957	9 44.36 in 2021
10 74.1 in 2023	10 72.2 in 1988	10 71.72 in 2017	10 45.21 in 2000
74.1 in 2013			

Average Temperature for 2024 = Not Available Yet
Normal Temperature for the Year at MKCF1 = 73.6°

Total Rainfall for 2024 = Not Available Yet
Normal Rainfall for the Year at MKCF1 = 61.07 inches

WAUCHULA 2 N (Records began in January 1933):

Warmest Decembers	Coollest Decembers	Wettest Decembers	Driest Decembers
1 72.0 in 2015	1 50.0 in 2010	1 7.89 in 2002	1 0.00 in 2001
2 70.0 in 1971	2 54.4 in 2009	2 6.29 in 1997	2 0.11 in 1938
3 69.8 in 2007	3 55.7 in 1935	3 6.10 in 2018	3 0.12 in 1956
4 68.7 in 2016	4 56.8 in 1963	4 5.57 in 2009	4 0.14 in 1933
68.7 in 1948	5 57.0 in 2003	5 5.51 in 1986	5 0.20 in 2011
6 68.4 in 1940	6 58.5 in 1989	6 4.83 in 1977	6 0.21 in 1934
7 67.8 in 2006	7 58.6 in 2020	7 4.77 in 1958	7 0.22 in 2013
8 67.7 in 1986	58.6 in 2002	8 4.20 in 1940	8 0.28 in 1991
9 67.6 in 1946	58.6 in 1954	9 4.13 in 1950	9 0.31 in 2014
10 67.5 in 1941	10 58.7 in 2005	10 4.11 in 1989	0.31 in 1949

Average Temperature for Dec 2024 = Not Available Yet
Normal Temperature for December at WAUF1 = 63.0°

Total Rainfall for Dec 2024 = Not Available Yet
Normal Rainfall for December at WAUF1 = 2.13 inches

Warmest Years	Coollest Years	Wettest Years	Driest Years
1 74.9 in 1990	1 70.8 in 1996	1 83.48 in 1953	1 29.56 in 2000
2 74.5 in 2008	2 70.9 in 2014	2 82.10 in 1947	2 36.59 in 2007
74.5 in 1948	3 71.3 in 1954	3 69.13 in 1959	3 36.66 in 1981
4 74.4 in 2015	4 71.4 in 1981	4 68.89 in 1939	4 36.93 in 1961
5 74.3 in 1991	71.4 in 1968	5 67.34 in 1983	5 40.25 in 1989
74.3 in 1933	71.4 in 1956	6 66.05 in 1998	6 40.27 in 1999
7 74.2 in 2009	7 71.5 in 2012	7 65.77 in 1997	7 41.39 in 2006
8 74.1 in 2023	71.5 in 2011	8 64.59 in 2022	8 42.06 in 1967
74.1 in 1989	9 71.6 in 1976	9 63.91 in 1960	9 43.58 in 1950
10 74.0 in 2019	10 71.7 in 2013	10 62.98 in 1943	10 43.63 in 2023
	71.7 in 1999		
	71.7 in 1940		

Average Temperature for 2024 = Not Available Yet
Normal Temperature for the Year at WAUF1 = 72.4°

Total Rainfall for 2024 = Not Available Yet
Normal Rainfall for the Year at WAUF1 = 52.00 inches

ARCHBOLD BIO STN (Records began in January 1969):

Warmest Decembers	Coollest Decembers	Wettest Decembers	Driest Decembers
1 73.4 in 2015	1 52.1 in 2010	1 7.60 in 1997	1 0.22 in 1981
2 70.5 in 2016	2 56.3 in 1989	2 6.22 in 2002	2 0.27 in 2005
3 69.1 in 1971	3 57.8 in 1969	3 4.90 in 1977	3 0.31 in 1970
4 69.0 in 2006	4 59.1 in 2003	4 4.16 in 1978	4 0.38 in 2000
5 68.4 in 2013	5 59.2 in 1980	5 3.91 in 2023	5 0.40 in 2021
6 67.3 in 2021	6 59.4 in 1993	6 3.83 in 1994	6 0.42 in 2013
7 67.2 in 1986	7 60.1 in 1985	7 3.75 in 2003	7 0.43 in 2011
8 67.0 in 2007	8 60.3 in 2020	8 3.35 in 1986	8 0.51 in 1982
9 66.7 in 1998	9 60.5 in 2005	9 3.10 in 2020	9 0.54 in 2016
10 66.3 in 1978	60.5 in 2002	10 3.04 in 2015	10 0.55 in 2001

Average Temperature for Dec 2024 = Not Available Yet
Normal Temperature for December at ACHF1 = 64.4°

Total Rainfall for Dec 2024 = Not Available Yet
Normal Rainfall for December at ACHF1 = 2.03 inches

Warmest Years	Coollest Years	Wettest Years	Driest Years
1 75.4 in 2015	1 70.1 in 2010	1 72.61 in 2002	1 27.31 in 2000
2 74.4 in 2023	2 70.6 in 1981	2 66.06 in 2004	2 33.00 in 2007
3 74.3 in 2020	3 70.7 in 1983	3 64.09 in 1969	3 36.26 in 1980
74.3 in 2017	4 71.0 in 1970	4 63.49 in 2013	4 37.46 in 2009
5 74.1 in 2019	71.0 in 1969	5 62.23 in 1992	5 41.45 in 1971
6 74.0 in 1990	6 71.1 in 2000	6 61.73 in 2015	6 43.02 in 1975
7 73.9 in 2022	71.1 in 1988	7 61.07 in 1982	7 43.84 in 1996
73.9 in 2016	71.1 in 1984	8 60.94 in 2023	8 43.97 in 1985
9 73.7 in 1991	9 71.2 in 1996	9 60.89 in 1979	9 45.03 in 1981
73.7 in 1975	10 71.3 in 1987	10 60.33 in 2001	10 45.06 in 1972
	71.3 in 1977		
	71.3 in 1976		

Average Temperature for 2024 = Not Available Yet
Normal Temperature for the Year at ACHF1 = 72.9°

Total Rainfall for 2024 = Not Available Yet
Normal Rainfall for the Year at ACHF1 = 54.23 inches

PUNTA GORDA AREA (Records began in May 1914):

Warmest Decembers	Coollest Decembers	Wettest Decembers	Driest Decembers
1 72.8 in 2015	1 54.0 in 2010	1 6.88 in 2002	1 0.00 in 1933
2 72.5 in 1931	2 57.6 in 1935	2 6.50 in 1925	2 0.07 in 1938
3 71.4 in 1948	3 58.0 in 1963	3 6.47 in 1997	3 0.09 in 1926
4 70.4 in 2013	4 58.4 in 1917	4 5.42 in 1995	4 0.12 in 1932
70.4 in 1971	5 59.9 in 2003	5 4.95 in 1958	5 0.15 in 2014
70.4 in 1946	6 60.1 in 1989	6 4.92 in 1977	6 0.17 in 2011
7 70.0 in 2021	60.1 in 1969	7 4.63 in 2009	7 0.25 in 1981
70.0 in 2016	8 60.3 in 1968	8 4.49 in 1967	8 0.27 in 1928
70.0 in 1932	9 60.6 in 1975	9 4.44 in 2023	9 0.28 in 1991
10 69.7 in 1951	10 60.7 in 1930	10 4.31 in 1969	10 0.34 in 2000
	60.7 in 1915		0.34 in 1962

Average Temperature for Dec 1-28, 2024 = 66.4°

Normal Temperature for December at PGD = 65.8°

Total Rainfall for Dec 1-28, 2024 = 0.23 inches

Normal Rainfall for December at PGD = 1.99 inches

Warmest Years	Coollest Years	Wettest Years	Driest Years
1 76.8 in 1948	1 71.5 in 1968	1 88.10 in 1947	1 30.01 in 2007
2 76.7 in 2023	2 71.6 in 2010	2 87.09 in 1959	2 30.07 in 1927
3 76.4 in 1946	3 71.8 in 1969	3 81.06 in 1995	3 32.85 in 1990
4 75.9 in 2020	71.8 in 1915	4 65.33 in 1922	4 35.07 in 1955
5 75.8 in 1949	5 71.9 in 1976	5 64.87 in 2003	5 36.18 in 2000
6 75.6 in 2018	71.9 in 1970	6 64.43 in 1983	6 36.87 in 1976
75.6 in 1990	7 72.3 in 1940	7 63.97 in 1928	7 37.41 in 1923
75.6 in 1945	8 72.4 in 1977	8 63.30 in 2018	8 38.03 in 1920
9 75.5 in 2015	9 72.6 in 1942	9 62.41 in 2016	9 38.11 in 1971
10 75.4 in 2022	10 72.7 in 1930	10 62.02 in 1958	10 39.17 in 1956
75.4 in 2021			

Average Temperature for Jan 1-Dec 28, 2024 = 77.0°

Normal Temperature for the Year at PGD = 74.3°

Total Rainfall for Jan 1-Dec 28, 2024 = 50.52 inches

Normal Rainfall for the Year at PGD = 52.97 inches

FORT MYERS AREA (Records began in January 1902):

Warmest Decembers		Coolest Decembers		Wettest Decembers		Driest Decembers	
1	73.6 in 2015	1	56.7 in 2010	1	7.04 in 1925	1	Trace in 1956
2	73.3 in 2016	2	58.4 in 1935	2	6.21 in 1905	2	0.01 in 1924
3	72.8 in 1931	3	58.5 in 1903	3	5.71 in 2019	3	0.02 in 1984
4	72.6 in 2021	4	58.8 in 1910	4	5.46 in 1997		0.02 in 1906
5	72.3 in 1971	5	59.3 in 1963	5	5.42 in 1940	5	0.05 in 2014
6	71.5 in 2013	6	60.3 in 1950	6	5.26 in 1986	6	0.09 in 2005
7	71.2 in 2007	7	60.5 in 1954	7	5.16 in 1979	7	0.13 in 1933
8	70.9 in 2006	8	60.8 in 1989	8	4.68 in 2003	8	0.14 in 1951
9	70.7 in 2019	9	61.0 in 1969	9	4.35 in 1978	9	0.15 in 1926
10	70.5 in 1948		61.0 in 1930	10	4.18 in 2023	10	0.16 in 1968

Average Temperature for Dec 1-28, 2024 = 66.8°

Normal Temperature for December at FMY = 67.3°

Total Rainfall for Dec 1-28, 2024 = 0.67 inches

Normal Rainfall for December at FMY = 1.90 inches

Warmest Years		Coolest Years		Wettest Years		Driest Years	
1	78.0 in 2023	1	71.2 in 1910	1	80.17 in 1947	1	32.83 in 1964
2	77.6 in 2022	2	71.8 in 1903	2	77.35 in 1922	2	32.85 in 1927
3	77.1 in 2020	3	72.1 in 1904	3	74.85 in 1983	3	33.93 in 1944
4	77.0 in 2015	4	72.3 in 1958	4	74.75 in 1912	4	35.00 in 1988
	77.0 in 1990		72.3 in 1902	5	74.46 in 2005	5	36.19 in 1950
6	76.9 in 2021	6	72.4 in 1977	6	73.14 in 1995	6	38.50 in 1907
7	76.8 in 2019		72.4 in 1917	7	72.70 in 2022	7	39.88 in 2009
8	76.6 in 1994	8	72.5 in 1976	8	71.94 in 1969	8	41.68 in 1918
9	76.4 in 1991		72.5 in 1906	9	70.64 in 2003	9	41.72 in 1938
10	76.2 in 2018	10	72.8 in 1983	10	70.29 in 1968	10	42.32 in 2014
	76.2 in 2012		72.8 in 1969				
			72.8 in 1940				
			72.8 in 1909				

Average Temperature for Jan 1-Dec 28, 2024 = 76.8°

Normal Temperature for the Year at FMY = 75.4°

Total Rainfall for Jan 1-Dec 28, 2024 = *79.71 inches

Normal Rainfall for the Year at FMY = 57.41 inches

** Rainfall was missing on October 10, 2024, but radar and surrounding observations only indicate that 0.05 inch or less fell on this day.*

For more Climate information visit our web site at the following link:
<https://www.weather.gov/tampabay> and then go to the Climate and Past Weather drop down menu above the graphical forecast images.