



## NOAA - National Weather Service

Tampa Bay Area

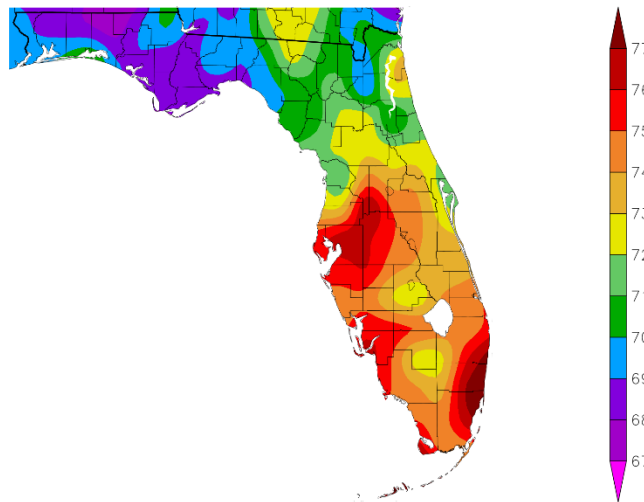
2525 14th Avenue SE, Ruskin, Florida 33570

813-645-2323 <https://weather.gov/tampabay>

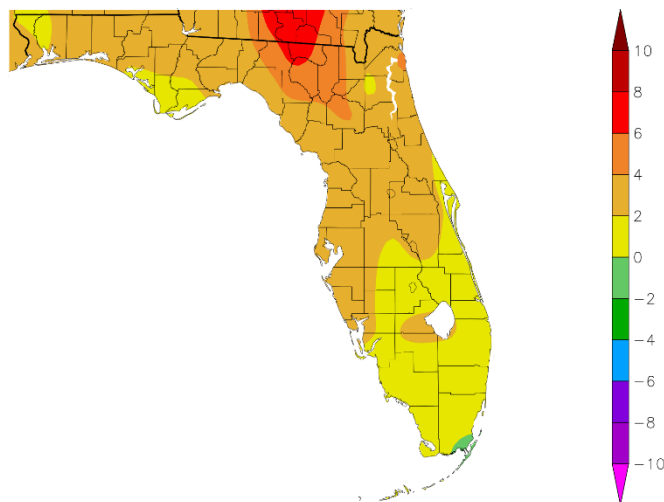
### Preliminary April 2025 Weather Summary for West Central and Southwest Florida

Temperatures are averaging about 2 to 4 degrees Fahrenheit above normal so far this April, with a few locations on track to end up in the Top Ten Warmest Aprils. This is thanks to many days with high pressure at the surface and aloft keeping a rather warm and dry airmass across the region.

Temperature (F)  
4/1/2025 - 4/27/2025

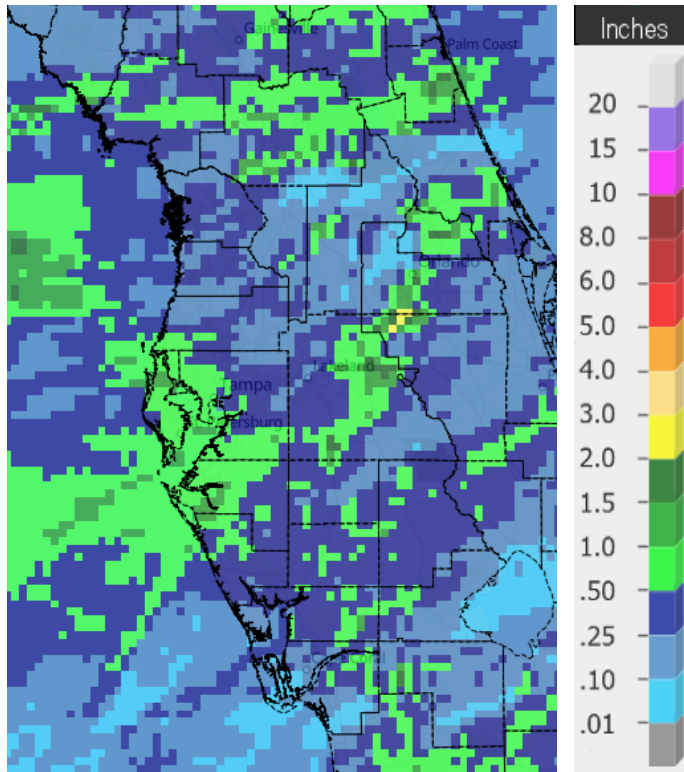


Departure from Normal Temperature (F)  
4/1/2025 - 4/27/2025

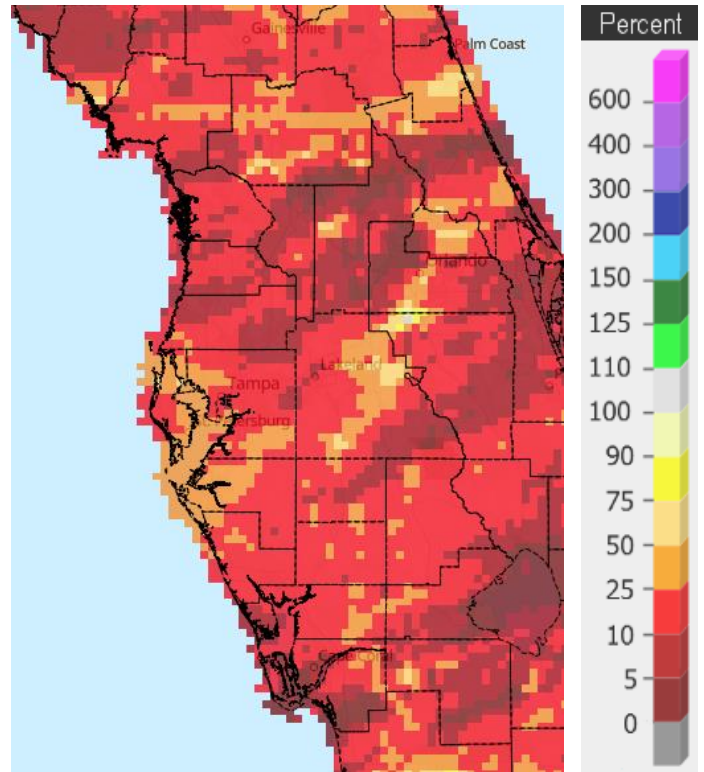


Graphics Source: High Plains Regional Climate Center (HPRCC)

As far as rainfall, April is usually one of the drier months of the year and thanks to high pressure holding over the region for much of the month many locations are running less than 25 percent of normal.



April 1-27, 2025 Rainfall



Percent of Normal Rain

On the following pages are tables of the top ten warmest, coolest, wettest, and driest Aprils at some official NWS locations, which includes the average/total so far for this April where available, and the 1991-2020 average temperature and rainfall for the month of April.

**CHIEFLAND 5 ESE** (records began in July 1956):

Warmest Aprils	Coolest Aprils	Wettest Aprils	Driest Aprils
1 73.0 in 1991	1 63.4 in 1961	1 14.61 in 1982	1 0.00 in 1967
2 72.5 in 2002	2 64.8 in 2005	2 8.46 in 1997	2 0.30 in 1963
3 72.2 in 1999	3 64.9 in 2004	3 7.39 in 1995	3 0.31 in 1969
4 71.8 in 1970	4 65.0 in 1962	4 7.16 in 1985	4 0.42 in 2016
5 71.5 in 2020	5 65.3 in 1993	5 7.13 in 1991	5 0.79 in 1989
6 71.3 in 2017	6 65.5 in 2000	6 6.65 in 1957	6 0.80 in 2000
71.3 in 2011	7 65.6 in 2007	7 6.48 in 1983	7 0.88 in 2001
8 71.2 in 1911	8 66.4 in 1966	8 6.22 in 2005	0.88 in 1998
71.2 in 1965	9 66.6 in 1984	9 6.20 in 1961	9 0.91 in 1993
10 70.9 in 1994	10 66.9 in 1986	10 6.12 in 1979	0.91 in 1981
	66.9 in 1983		

Average Temperature for April 1-27, 2025 = 71.2°

Normal Temperature for April at CHIF1 = 68.4°

Total Rainfall for April 1-27, 2025 = 0.55 inches

Normal Rainfall for April at CHIF1 = 2.97 in.

-----

**INVERNESS 3 SE** (records began in July 1948):

Warmest Aprils	Coolest Aprils	Wettest Aprils	Driest Aprils
1 75.5 in 1954	1 64.8 in 1993	1 7.88 in 1953	1 0.00 in 1967
2 74.9 in 2015	2 66.1 in 2004	2 5.89 in 1991	2 0.06 in 2001
3 74.5 in 1968	3 66.2 in 2000	3 5.76 in 2011	3 0.07 in 1998
4 74.3 in 1967	4 66.3 in 2007	4 5.52 in 2021	4 0.20 in 1978
5 74.2 in 2023	5 66.4 in 1996	5 5.49 in 2022	5 0.26 in 1987
6 74.1 in 1965	6 66.8 in 2003	6 5.20 in 1997	6 0.31 in 1977
7 74.0 in 1970	66.8 in 1992	7 5.15 in 1959	0.31 in 1974
8 73.5 in 2002	8 67.1 in 1998	8 5.01 in 2018	8 0.65 in 1999
9 73.1 in 1969	9 67.3 in 1988	9 5.00 in 1982	9 0.73 in 1968
73.1 in 1963	10 67.4 in 1950	10 4.89 in 1984	10 0.76 in 1981

Average Temperature for April 2025 = Not Available Yet

Normal Temperature for April at INV1 = 68.5°

Total Rainfall for April 2025 = Not Available Yet

Normal Rainfall for April at INV1 = 2.69 in.

**BROOKSVILLE AREA** (records began in January 1892):

Warmest Aprils	Coolest Aprils	Wettest Aprils	Driest Aprils
1 75.5 in 1947	1 64.3 in 2005	1 14.49 in 1928	1 Trace in 2017
75.5 in 1945	64.3 in 2004	2 8.05 in 1900	Trace in 1967
75.5 in 1929	3 64.8 in 1901	3 7.54 in 1935	3 0.04 in 2001
4 75.2 in 2015	4 65.3 in 2000	4 7.41 in 1949	4 0.10 in 1903
5 74.5 in 1927	5 66.8 in 2007	5 7.38 in 1991	5 0.16 in 1977
6 74.4 in 1994	6 67.1 in 1950	6 6.92 in 1953	6 0.20 in 1981
7 74.3 in 2023	7 67.3 in 1892	7 6.48 in 1937	7 0.21 in 1932
8 74.0 in 1909	8 67.5 in 1998	8 6.39 in 1918	8 0.25 in 2006
9 73.9 in 2020	9 67.6 in 1926	9 6.33 in 1982	9 0.26 in 1998
10 73.8 in 1981	10 67.7 in 1952	10 6.20 in 1926	10 0.32 in 1896

Average Temperature for April 1-27, 2025 = 72.5°

Temperature for April at BKV = 69.2°

Total Rainfall for April 1-27, 2025 = 0.16 inches

Normal Rainfall for April at BKV = 2.18 in.

-----

**ST. LEO** (records began in April 1895):

Warmest Aprils	Coolest Aprils	Wettest Aprils	Driest Aprils
1 76.8 in 1908	1 66.4 in 1931	1 15.55 in 1953	1 Trace in 1967
2 76.0 in 1954	2 66.7 in 1987	2 11.22 in 1928	2 0.06 in 1981
76.0 in 1947	66.7 in 1928	3 7.41 in 1937	0.06 in 1922
4 75.7 in 1945	4 67.7 in 1950	4 7.02 in 1997	4 0.09 in 2001
5 75.5 in 2015	67.7 in 1915	5 6.86 in 1991	5 0.11 in 1903
6 75.4 in 2002	67.7 in 1901	6 6.75 in 1949	6 0.12 in 1963
7 75.3 in 1994	7 68.0 in 1903	6.75 in 1941	7 0.13 in 2017
8 74.9 in 2023	8 68.4 in 1916	8 6.61 in 2018	8 0.20 in 1911
74.9 in 1991	9 68.6 in 1993	9 6.33 in 1895	9 0.21 in 1998
10 74.6 in 2006	10 68.7 in 1913	10 6.32 in 2020	10 0.23 in 1896
74.6 in 1999			

Average Temperature for April 2025 = Not Available Yet

Normal Temperature for April at STLf1 = 71.4°

Total Rainfall for April 2025 = Not Available Yet

Normal Rainfall for April at STLf1 = 3.06 in.

**TARPON SPRINGS** (records began in January 1892):

Warmest Aprils	Coolest Aprils	Wettest Aprils	Driest Aprils
1 76.5 in 2015	1 65.7 in 1987	1 7.63 in 1931	1 0.00 in 1967
2 76.4 in 1947	2 67.1 in 1915	2 7.20 in 1942	2 Trace in 1896
3 76.0 in 1991	3 67.2 in 1962	3 6.97 in 1949	3 0.05 in 1922
4 75.3 in 1945	4 67.4 in 1950	4 6.66 in 1928	4 0.07 in 1981
5 75.1 in 1994	67.4 in 1940	5 6.31 in 1953	0.07 in 1972
6 75.0 in 2020	6 67.5 in 1903	6 6.01 in 1957	6 0.08 in 1923
7 74.9 in 1948	7 67.8 in 1916	7 6.00 in 2020	7 0.16 in 1998
8 74.8 in 1922	8 67.9 in 1971	8 5.97 in 1933	8 0.18 in 1903
74.8 in 1912	67.9 in 1961	9 5.90 in 1959	9 0.20 in 2017
10 74.7 in 2002	67.9 in 1910	10 5.70 in 1941	10 0.23 in 1910
74.7 in 1929			

Average Temperature for April 1-27, 2025 = 74.6°

Normal Temperature for April at TRPF1 = 72.2°

Total Rainfall for April 1-27, 2025 = 1.04 inches

Normal Rainfall for April at TRPF1 = 2.69 in.

-----

**TAMPA AREA** (records began in April 1890):

Warmest Aprils	Coolest Aprils	Wettest Aprils	Driest Aprils
1 78.0 in 2015	1 66.3 in 1987	1 10.71 in 1997	1 Trace in 1981
2 77.1 in 2017	2 66.7 in 1901	2 8.04 in 1920	Trace in 1967
3 77.0 in 2023	3 67.2 in 1993	3 7.23 in 1931	3 0.02 in 2001
4 76.9 in 2022	4 67.7 in 1950	4 6.76 in 2022	4 0.05 in 1969
5 76.8 in 1991	5 68.1 in 1903	5 6.73 in 2020	5 0.16 in 1922
6 76.6 in 1947	6 68.2 in 1899	6 6.59 in 1957	0.16 in 1898
7 76.4 in 1908	7 68.6 in 1983	7 6.14 in 1933	7 0.21 in 1963
8 76.3 in 2011	68.6 in 1961	8 5.75 in 1926	8 0.31 in 1892
76.3 in 2002	68.6 in 1915	9 5.48 in 1959	9 0.35 in 1938
10 76.0 in 1945	68.6 in 1891	10 5.38 in 1895	10 0.37 in 1946

Average Temperature for April 1-27, 2025 = 77.0°

Normal Temperature for April at TPA = 73.9°

Total Rainfall for April 1-27, 2025 = 0.63 inches

Normal Rainfall for April at TRA = 2.55 in.

-----

**ST. PETERSBURG** (records began in August 1914):

Warmest Aprils	Coolest Aprils	Wettest Aprils	Driest Aprils
1 78.6 in 2015	1 68.5 in 1950	1 9.73 in 1997	1 0.00 in 1967
2 77.2 in 2023	2 68.7 in 1987	2 9.09 in 1920	2 Trace in 1981
3 77.0 in 2011	3 68.9 in 1993	3 8.45 in 1951	3 0.01 in 1974
77.0 in 1947	4 69.2 in 1952	4 7.69 in 1933	4 0.04 in 2001
5 76.9 in 2002	5 69.3 in 1983	5 7.39 in 1957	5 0.07 in 1987
6 76.6 in 1991	6 70.1 in 1916	6 7.20 in 2003	6 0.11 in 1998
7 76.5 in 2020	7 70.2 in 1915	7 6.16 in 1960	7 0.24 in 1932
76.5 in 2013	8 70.4 in 1951	8 6.09 in 1948	8 0.25 in 1977
9 76.1 in 1929	9 70.6 in 1931	9 5.81 in 1931	9 0.27 in 2006
10 76.0 in 1981	10 70.8 in 1996	10 5.46 in 1941	0.27 in 1963
76.0 in 1954	70.8 in 1961		
76.0 in 1922			

Average Temperature for April 1-27, 2025 = 76.1°

Normal Temperature for April at SPG = 74.1°

Total Rainfall for April 1-27, 2025 = 0.61 inches

Normal Rainfall for April at SPG = 1.93 in.

-----

**PLANT CITY** (Temperature records began in Sep 1892 and  
Rainfall records began in Jan 1893):

Warmest Aprils	Coolest Aprils	Wettest Aprils	Driest Aprils
1 77.9 in 2023	1 65.0 in 1901	1 7.29 in 1931	1 0.00 in 2001
2 77.2 in 2020	2 65.5 in 1987	2 7.13 in 1957	0.00 in 1981
3 76.9 in 2015	3 65.9 in 1931	3 7.11 in 1933	0.00 in 1967
4 76.1 in 1947	4 67.4 in 1932	4 6.56 in 1928	4 0.16 in 1987
5 75.9 in 1912	5 67.6 in 1983	5 6.53 in 1941	5 0.20 in 1923
6 75.8 in 1911	67.6 in 1902	6 6.40 in 1937	0.20 in 1911
7 75.7 in 1945	7 67.7 in 2005	7 6.36 in 1947	7 0.26 in 1938
8 75.6 in 2011	8 67.9 in 1993	8 6.06 in 1997	8 0.27 in 1963
9 75.5 in 1991	9 68.0 in 1940	9 6.00 in 1951	9 0.31 in 1977
10 75.3 in 2017	10 68.2 in 1925	10 5.78 in 1959	10 0.32 in 1898

Average Temperature for April 1-27, 2025 = 76.8°

Normal Temperature for April at PLCF1 = 73.5°

Total Rainfall for April 1-27, 2025 = 0.21 inches

Normal Rainfall for April at PLCF1 = 2.88 in.

-----

**LAKELAND AREA** (records began in January 1915):

Warmest Aprils	Coolest Aprils	Wettest Aprils	Driest Aprils
1 77.2 in 2015	1 67.3 in 1950	1 8.48 in 1959	1 0.00 in 1967
2 77.0 in 2023	2 68.3 in 2005	2 8.36 in 1939	2 0.04 in 2001
3 76.6 in 2020	68.3 in 1952	3 8.35 in 1934	3 0.05 in 1963
4 76.5 in 1991	4 68.5 in 1987	4 8.15 in 1951	4 0.09 in 1981
5 76.3 in 1994	5 68.6 in 1961	5 7.71 in 1928	5 0.22 in 1977
6 76.2 in 1922	68.6 in 1951	6 6.84 in 1997	6 0.25 in 1922
7 76.1 in 2011	7 68.7 in 2007	7 6.77 in 1957	7 0.42 in 1972
8 75.8 in 1947	8 68.9 in 1973	8 6.66 in 1920	0.42 in 1969
9 75.6 in 1945	9 69.0 in 1983	9 5.82 in 1926	9 0.43 in 1932
10 75.4 in 1929	10 69.5 in 1931	10 5.60 in 1941	10 0.44 in 1945
	69.5 in 1915		

Average Temperature for April 1-27, 2025 = 76.1°

Normal Temperature for April at LLDF1 = 73.2°

Total Rainfall for April 1-27, 2025 = 0.22 inches

Normal Rainfall for April at LLDF1 = 2.82 in.

-----

**WINTER HAVEN AREA** (records began in March 1941):

Warmest Aprils	Coolest Aprils	Wettest Aprils	Driest Aprils
1 78.6 in 2015	1 67.0 in 1987	1 7.36 in 1951	1 0.00 in 1981
2 77.8 in 1947	2 68.5 in 1983	2 7.29 in 1941	0.00 in 1967
3 77.5 in 1991	68.5 in 1973	3 6.51 in 2008	3 0.18 in 1963
4 77.1 in 1945	4 69.0 in 1961	4 6.34 in 1957	4 0.28 in 1946
5 76.6 in 2002	5 69.1 in 1971	5 5.55 in 1947	5 0.46 in 1952
6 76.3 in 2011	6 69.7 in 2005	6 5.30 in 1960	6 0.51 in 2017
7 76.2 in 2023	69.7 in 1962	7 5.11 in 1997	7 0.56 in 2001
8 76.0 in 2020	8 69.9 in 1993	8 5.01 in 1959	8 0.61 in 1978
9 75.8 in 1994	9 70.0 in 1951	9 4.42 in 2018	9 0.62 in 1968
10 75.7 in 1948	10 70.1 in 2004	4.42 in 1991	10 0.64 in 1986

Average Temperature for April 1-27, 2025 = 75.8°

Normal Temperature for April at GIF = 73.8°

Total Rainfall for April 1-27, 2025 = 0.88 inches

Normal Rainfall for April at GIF = 2.50 in.

**BARTOW** (records began in June 1892):

Warmest Aprils	Coolest Aprils	Wettest Aprils	Driest Aprils
1 78.7 in 1908	1 65.9 in 1926	1 9.70 in 1920	1 0.00 in 1967
2 77.2 in 1945	2 66.3 in 1901	2 8.40 in 1951	2 Trace in 2000
3 76.1 in 1991	3 66.9 in 1915	3 6.89 in 1941	Trace in 1907
4 76.0 in 1999	4 67.3 in 1928	4 6.69 in 1934	4 0.04 in 1922
76.0 in 1947	5 68.0 in 1913	5 6.43 in 1937	5 0.11 in 1981
76.0 in 1922	6 68.1 in 1987	6 6.14 in 1935	6 0.17 in 1938
7 75.9 in 2023	7 68.4 in 1950	7 6.12 in 1954	7 0.20 in 1987
75.9 in 2014	68.4 in 1931	6.12 in 1895	8 0.21 in 2006
9 75.7 in 1965	9 68.8 in 1952	9 5.94 in 1933	9 0.28 in 2001
10 75.6 in 2002	10 68.9 in 1937	10 5.87 in 1991	10 0.34 in 1919
75.6 in 1954			

Average Temperature for April 2025 = Not Available Yet  
Normal Temperature for April at BARF1 = 72.5°

Total Rainfall for April 2025 = Not Available Yet  
Normal Rainfall for April at BARF1 = 2.72 in.

-----  
**SARASOTA-BRADENTON AREA** (records began in January 1911):

Warmest Aprils	Coolest Aprils	Wettest Aprils	Driest Aprils
1 76.2 in 2023	1 65.9 in 1987	1 10.23 in 1957	1 0.00 in 1967
2 75.9 in 2015	2 67.0 in 1916	2 9.82 in 1920	2 Trace in 2017
75.9 in 1945	3 67.1 in 1915	3 8.78 in 1997	3 0.01 in 1923
4 75.2 in 2020	4 67.5 in 1931	4 7.36 in 2020	4 0.03 in 1981
5 75.1 in 1994	5 67.8 in 1986	5 7.22 in 1933	5 0.08 in 1963
6 75.0 in 2017	6 68.3 in 2005	6 7.09 in 1951	6 0.10 in 1998
7 74.9 in 1947	68.3 in 1950	7 5.55 in 1930	7 0.10 in 1922
8 74.6 in 2002	8 68.4 in 1993	8 5.11 in 1953	8 0.14 in 2006
9 74.5 in 2022	9 68.5 in 1971	9 4.87 in 1916	0.14 in 2001
74.5 in 1954	68.5 in 1940	10 4.85 in 1960	10 0.15 in 1938

Average Temperature for April 1-27, 2025 = 75.1°  
Normal Temperature for April at SRQ = 72.6°

Total Rainfall for April 1-27, 2025 = 1.16 inches  
Normal Rainfall for April at SRQ = 2.46 in.



**VENICE** (records began in May 1955):

Warmest Aprils	Coolest Aprils	Wettest Aprils	Driest Aprils
1 76.9 in 2015	1 65.5 in 1987	1 13.85 in 1957	1 0.00 in 1967
2 76.6 in 2023	2 68.0 in 1986	2 7.86 in 1997	2 0.06 in 1975
3 76.2 in 2011	3 68.5 in 1993	3 6.10 in 1962	3 0.07 in 1987
4 76.1 in 1994	4 68.6 in 2005	4 5.20 in 1993	0.07 in 1978
5 75.9 in 2013	5 68.8 in 1983	5 5.18 in 1984	5 0.09 in 1963
6 75.5 in 2002	68.8 in 1962	6 5.09 in 1991	6 0.15 in 2006
7 75.0 in 2020	7 69.0 in 1988	7 4.51 in 2013	7 0.16 in 2001
8 74.5 in 2017	8 69.3 in 1984	4.51 in 1982	8 0.17 in 1970
74.5 in 1999	9 69.4 in 2007	9 4.12 in 1966	9 0.18 in 1999
10 74.4 in 2012	10 69.6 in 1956	10 4.01 in 2004	10 0.24 in 1972

Average Temperature for April 1-27, 2025 = 74.7°

Normal Temperature for April at VNCF1 = 72.5°

Total Rainfall for April 1-27, 2025 = Few Days Missing

Normal Rainfall for April at VNCF1 = 2.47 in.

-----

**MYAKKA RIVER STATE PARK** (Temperature records began in March 1956  
and Rainfall records began in Sep 1943):

Warmest Aprils	Coolest Aprils	Wettest Aprils	Driest Aprils
1 77.0 in 2015	1 66.5 in 1987	1 8.93 in 1997	1 0.00 in 2001
2 76.0 in 1999	2 67.8 in 1962	2 7.85 in 1993	2 Trace in 1981
3 75.7 in 1994	3 68.0 in 1961	3 7.10 in 1954	3 0.02 in 1987
4 74.9 in 2023	4 68.3 in 2005	4 7.02 in 1948	4 0.04 in 1946
5 74.8 in 1982	5 68.4 in 1986	5 6.82 in 1957	5 0.10 in 2006
6 74.7 in 2013	6 68.7 in 1973	6 6.54 in 2020	6 0.12 in 1970
74.7 in 2011	7 69.2 in 2004	7 6.22 in 1951	7 0.15 in 1978
74.7 in 1981	8 69.3 in 1971	8 5.58 in 1995	8 0.20 in 1998
9 74.4 in 2002	9 69.7 in 1983	9 5.17 in 2008	9 0.33 in 1971
74.4 in 1970	10 69.8 in 2024	10 5.05 in 1982	10 0.43 in 1950

Average Temperature for April 2025 = Not Available Yet

Normal Temperature for April at MKCF1 = 72.5°

Total Rainfall for April 2025 = Not Available Yet

Normal Rainfall for April at MKCF1 = 2.98 in.

-----

**WAUCHULA** (records began in January 1933):

Warmest Aprils	Coolest Aprils	Wettest Aprils	Driest Aprils
1 77.2 in 1945	1 65.7 in 1950	1 8.26 in 1951	1 0.00 in 2001
2 76.3 in 1947	2 66.7 in 1993	2 7.75 in 1947	0.00 in 1978
3 75.6 in 2023	66.7 in 1987	3 6.94 in 1962	0.00 in 1967
4 75.4 in 2015	4 66.8 in 2004	4 6.60 in 1995	4 0.03 in 1963
5 74.8 in 1968	5 67.6 in 1983	5 6.55 in 1953	5 0.05 in 1971
6 74.7 in 1991	6 67.9 in 1952	6 6.44 in 1992	6 0.08 in 1981
7 74.5 in 1970	7 68.1 in 1951	7 6.36 in 1934	7 0.13 in 1970
8 74.4 in 1975	8 68.3 in 2000	8 6.16 in 2021	8 0.16 in 1987
9 74.2 in 1965	9 68.5 in 2007	9 5.95 in 1997	9 0.22 in 1945
10 74.1 in 2020	68.5 in 1997	10 5.44 in 1933	10 0.23 in 1975
74.1 in 1982			
74.1 in 1939			

Average Temperature for April 1-27, 2025 = 73.0°

Normal Temperature for April at WAUF1 = 71.0°

Total Rainfall for April 1-27, 2025 = 0.40 inches

Normal Rainfall for April at WAUF1 = 2.92 in.

-----

**ARCHBOLD BIO STN** (records began in January 1969):

Warmest Aprils	Coolest Aprils	Wettest Aprils	Driest Aprils
1 76.6 in 2015	1 63.0 in 1987	1 9.53 in 2021	1 0.03 in 2006
2 75.0 in 2023	2 66.4 in 1986	2 5.90 in 1972	2 0.08 in 1971
75.0 in 2020	3 66.7 in 2004	3 5.65 in 2015	3 0.16 in 1981
4 74.8 in 1991	4 66.9 in 1993	4 5.64 in 2023	4 0.19 in 1970
5 74.4 in 2011	5 67.4 in 2005	5 5.47 in 1997	5 0.21 in 1986
6 74.1 in 1994	67.4 in 1983	6 5.37 in 2013	6 0.42 in 2016
7 73.7 in 1982	7 67.7 in 2000	7 4.91 in 1992	7 0.43 in 1978
8 73.5 in 1975	8 68.6 in 1971	8 4.90 in 1973	8 0.52 in 1987
9 73.4 in 2013	9 68.7 in 1992	9 4.15 in 1982	9 0.59 in 2009
10 73.1 in 2017	10 68.8 in 2007	10 4.10 in 2004	10 0.62 in 2024
	68.8 in 1984		

Average Temperature for April 2025 = Not Available Yet

Normal Temperature for April at ACHF1 = 71.7°

Total Rainfall for April 2025 = Not Available Yet

Normal Rainfall for April at ACHF1 = 2.54 in.

**PUNTA GORDA AREA** (records began in May 1914):

Warmest Aprils	Coolest Aprils	Wettest Aprils	Driest Aprils
1 78.7 in 1945	1 67.9 in 1987	1 8.70 in 1920	1 0.00 in 1981
2 78.2 in 1947	2 68.7 in 1915	2 7.93 in 1957	0.00 in 1963
3 76.9 in 1944	3 69.1 in 2004	3 7.08 in 1931	0.00 in 1946
4 76.6 in 2023	69.1 in 1916	4 6.07 in 2023	4 Trace in 1975
76.6 in 2015	5 69.2 in 2005	5 5.80 in 1994	Trace in 1967
76.6 in 1994	6 69.7 in 1971	6 5.52 in 1941	6 0.03 in 1922
7 76.1 in 1954	7 70.0 in 1993	7 5.36 in 1947	7 0.05 in 2006
8 76.0 in 1991	70.0 in 1986	8 5.20 in 1933	8 0.09 in 1970
76.0 in 1946	9 70.1 in 2000	9 5.15 in 1997	9 0.10 in 2001
10 75.9 in 1948	10 70.2 in 1950	10 5.08 in 1965	10 0.11 in 1987
		5.08 in 1948	

Average Temperature for April 1-27, 2025 = 75.1°

Normal Temperature for April at PGD = 73.1°

Total Rainfall for April 1-27, 2025 = 0.36 inches

Normal Rainfall for April at PGD = 2.23 in.

-----  
**FORT MYERS AREA** (records began in January 1902):

Warmest Aprils	Coolest Aprils	Wettest Aprils	Driest Aprils
1 79.2 in 2020	1 68.5 in 1950	1 8.42 in 1939	1 Trace in 1970
2 79.0 in 2023	2 68.8 in 1987	2 7.66 in 1941	Trace in 1967
3 78.8 in 2015	3 69.3 in 1915	3 6.06 in 1933	Trace in 1903
4 77.7 in 2011	4 69.6 in 1903	4 5.89 in 1930	4 0.01 in 2006
77.7 in 1991	5 70.1 in 1983	5 5.83 in 2022	0.01 in 1946
77.7 in 1947	70.1 in 1910	6 5.68 in 1994	6 0.02 in 1922
7 77.5 in 2022	7 70.2 in 1952	7 5.61 in 1916	7 0.08 in 1981
8 77.4 in 1994	8 70.4 in 1971	8 5.50 in 1949	0.08 in 1950
9 77.3 in 1908	9 70.6 in 1931	9 5.34 in 1995	9 0.11 in 1974
10 76.9 in 2018	10 70.8 in 2005	10 5.01 in 1991	10 0.14 in 1987
76.9 in 2013	70.8 in 1993		
76.9 in 2002	70.8 in 1961		
76.9 in 1945	70.8 in 1907		
	70.8 in 1902		

Average Temperature for April 1-27, 2025 = 76.7°

Normal Temperature for April at FMY = 74.8°

Total Rainfall for April 1-27, 2025 = 0.57 inches

Normal Rainfall for April at FMY = 2.44 in.

-----  
For more Climate information visit our web site at the following link:  
<https://www.weather.gov/tampabay> and then go to the Climate and Past  
Weather drop down menu above the graphical forecast images.