



NOAA - National Weather Service

Tampa Bay Area

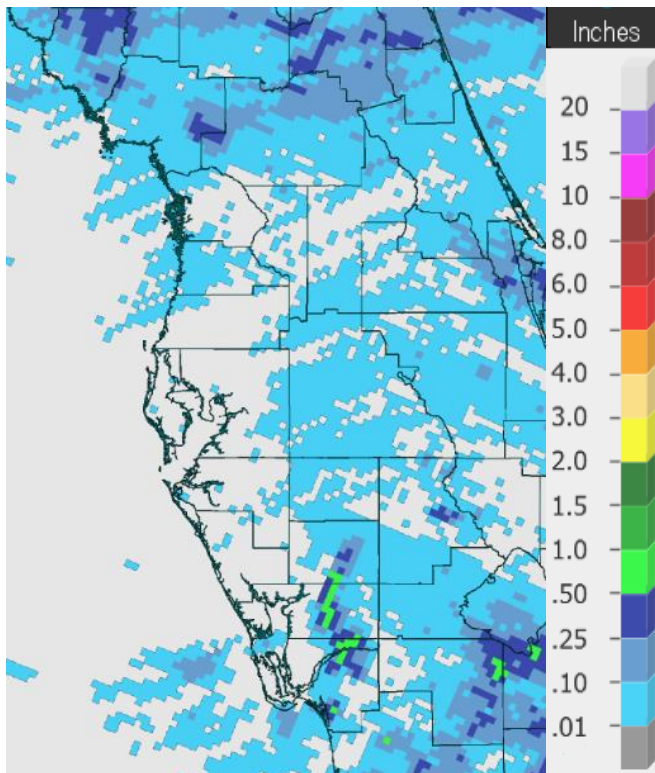
2525 14th Avenue SE, Ruskin, Florida 33570

813-645-2323 <https://weather.gov/tampabay>

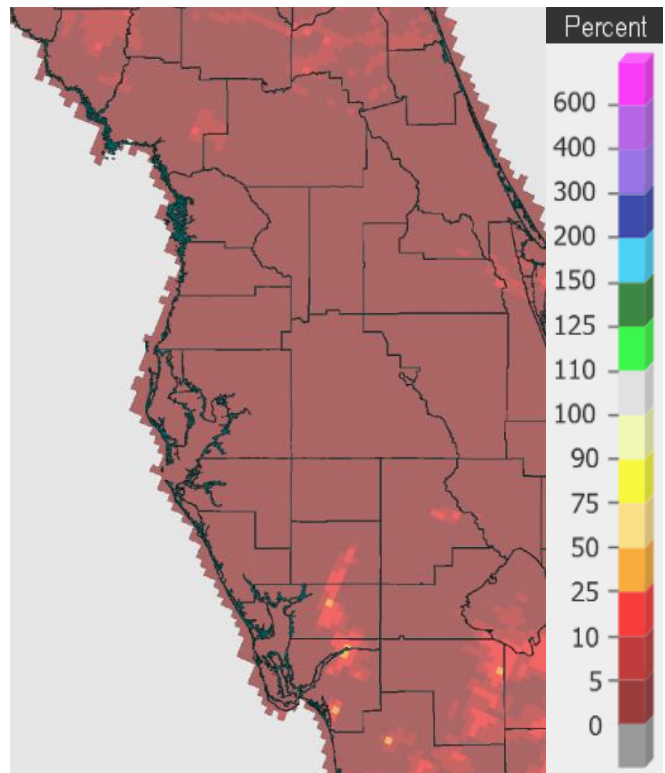
Abnormally Dry across West Central and Southwest Florida

[Included are listings of the Top Ten Driest Months/Driest January through March and Driest November (prev year) through March at some locations across West Central and Southwest Florida]

Rainfall has been pretty much non-existent this month as high pressure has been holding across the region with limited moisture and only one actual cold frontal passage during the first week. These dry conditions could place many sites as the driest/second driest for the month of March, but that's assuming we don't receive much rain with the cold front on the last day of the month.

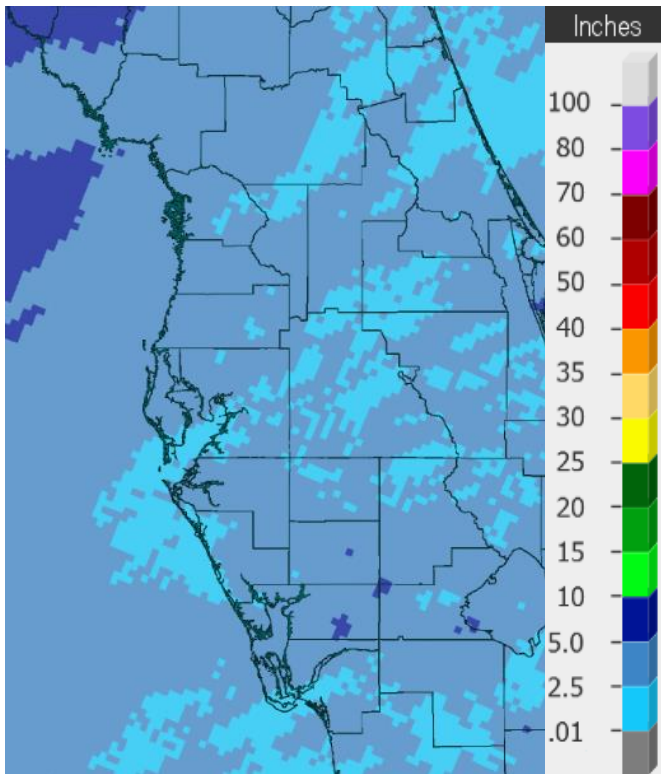


Rainfall March 1-28 2020

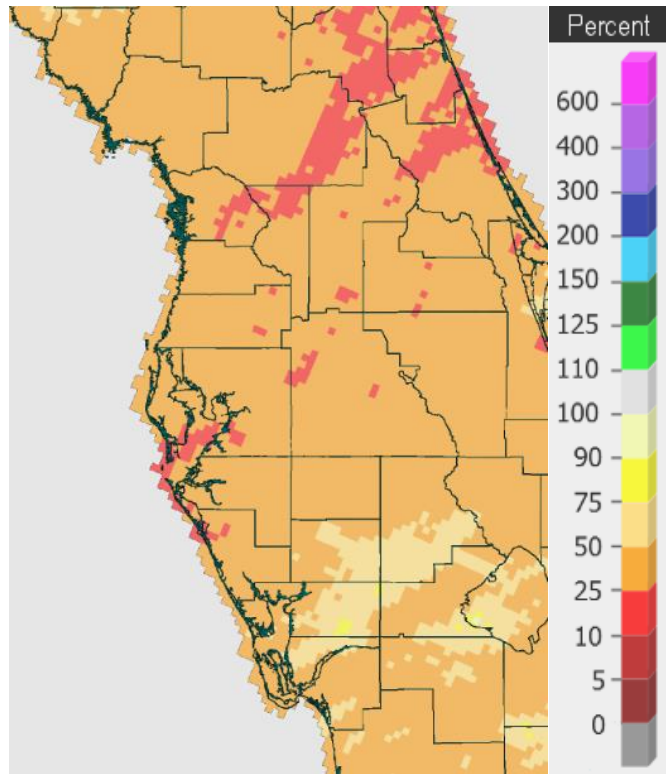


Percent of Normal

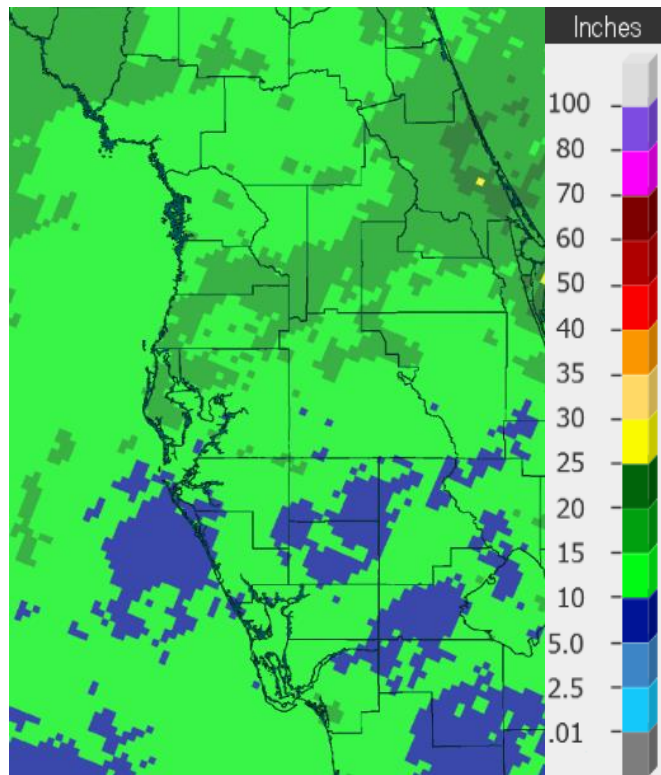
This dry trend began back during last Autumn with most locations running below normal since then. However, this is not that unusual for this time period as it is usually our drier time of year. Over the last five to six months though we have seen below normal rainfall in most locations across West Central and Southwest Florida.



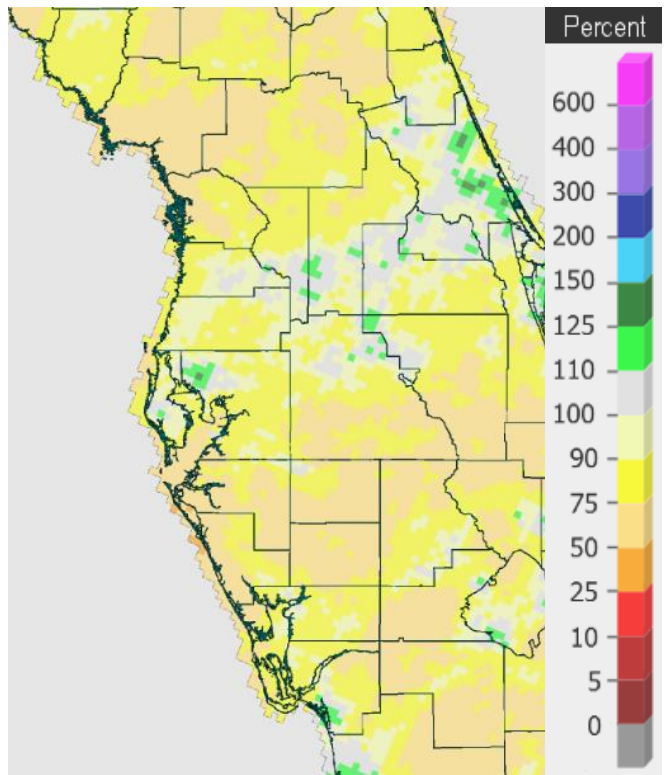
Rainfall Jan 1 - Mar 28 2020



Percent of Normal



Rainfall Oct 1 2019 - Mar 28 2020

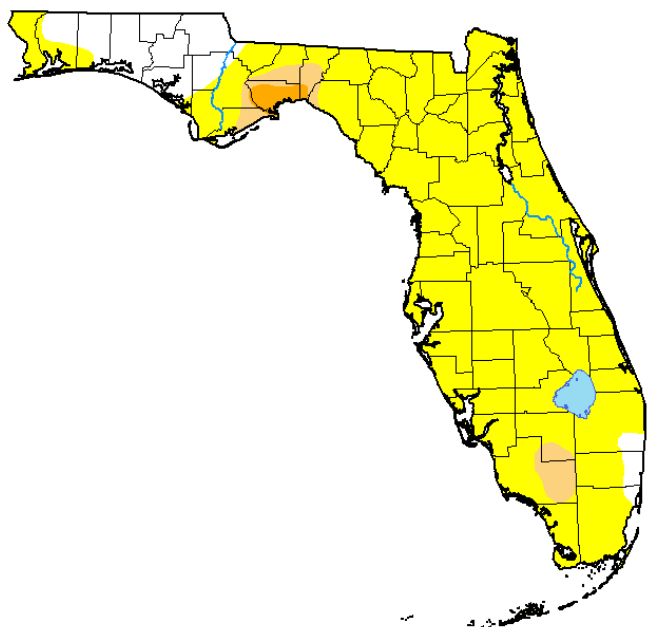


Percent of Normal

Therefore, as of March 24, 2020 the U.S. Drought Monitor placed all of West Central and Southwest Florida in the D0 Abnormally Dry (yellow area on map below). This generally indicates that conditions are much drier than normal, that brush fires could increase, and more landscape irrigation is needed.

**U.S. Drought Monitor
Florida**

March 24, 2020
(Released Thursday, Mar. 26, 2020)
Valid 8 a.m. EDT



Intensity:

- None
- D0 Abnormally Dry
- D1 Moderate Drought
- D2 Severe Drought
- D3 Extreme Drought
- D4 Exceptional Drought

The Drought Monitor focuses on broad-scale conditions. Local conditions may vary. For more information on the Drought Monitor, go to <http://droughtmonitor.unl.edu/About.aspx>

Author:

Brad Rippey
U.S. Department of Agriculture

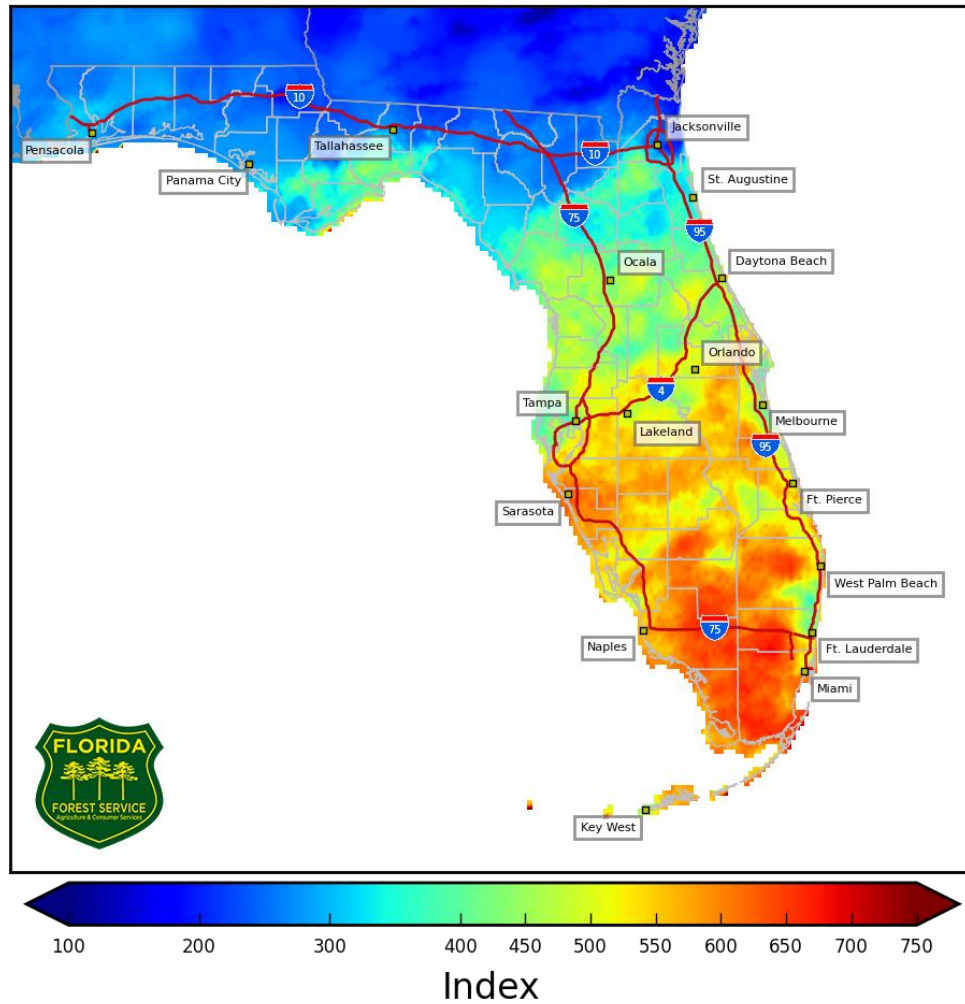


droughtmonitor.unl.edu

Category	Impact
D0	Small brush fires increase
	Increased landscape irrigation is needed; voluntary water conservation is requested
D1	Burn bans are possible
	Trees and bushes begin browning
D2	Water supply decreases
	Pasture is drying, hay yields are low
	Large increase of wildfire abundance; fire danger is elevated; burn bans are implemented
	Lawns and landscapes go dormant
	Bears and snakes change food and water habitats
D3	Air and water quality are poor; water salinity is high; river and lake levels are low
	Fire danger is extreme; fire restrictions increase
	Saltwater species replace freshwater species; sea intrusion
	Nesting bird populations grow with increased nesting area; mosquitoes increase
D4	Fish kills occur; toxic algae blooms appear
	Ground water declines; Lake Okeechobee is extremely low
	Ground water declines rapidly
	Large municipalities use alternative water sources, borrow water

These dry conditions can also be seen in the Keetch-Byram Drought Index (KBDI) which gives an indication of the dryness of the soil and surface fuels. It uses a scale that ranges from 0 (no moisture deficit) to 800. High values of the KBDI are an indication that conditions may be favorable for the occurrence and spread of wildfires. As seen below, the KBDI values are over 500 from about Interstate 4 southward, with portions of Manatee, Sarasota, and Lee counties over 600.

4 km Resolution KBDI Statewide March 29, 2020



On the following pages are tables of the Top Ten Driest Months, Driest Marches, Driest January through March, and Driest November through March at some official NWS locations, which include the average/total so far for this season where available, and the 1981-2010 Normal (average) rainfall for these time periods.

CHIEFLAND 5 SE (Records began in June 1956):

Driest Months		Driest Marches		Driest Jan-Mar		Driest Nov-Mar	
1	0.00 in Oct 2010	1	0.06 in 2006	1	3.54 in 2013	1	6.07 in 2016-17
	0.00 in May 2001	2	0.63 in 2017	2	3.62 in 2017	2	8.17 in 2012-13
	0.00 in Apr 1967	3	0.69 in 2013	3	4.41 in 1976	3	8.47 in 2001-02
	0.00 in Dec 1956	4	0.71 in 1976	4	5.19 in 1989	4	9.12 in 1961-62
5	Trace in Nov 1978	5	0.74 in 2019	5	5.26 in 2019	5	9.50 in 2011-12
6	0.05 in May 2000	6	0.95 in 2007	6	5.27 in 1962	6	9.67 in 1975-76
7	0.06 in Mar 2006	7	0.99 in 1967	7	5.57 in 1997	7	9.75 in 1999-00
8	0.11 in Oct 2001	8	1.26 in 2004	8	6.61 in 2000	8	10.38 in 1998-99
9	0.12 in Feb 1962	9	1.27 in 1979	9	6.80 in 2015	9	10.41 in 1956-57
10	0.14 in Oct 1973	10	1.55 in 2002	10	7.39 in 2002	10	10.50 in 2008-09

Total Rainfall so far in March 2020 = 0.15 inches
Normal Rainfall for March at CHIF1 = 4.58 inches

Total Rainfall for January - March 2020 = 3.58 inches
Normal Rainfall for January - March at CHIF1 = 12.30 inches

Total Rainfall for November 2019 - March 2020 = 14.11 inches
Normal Rainfall for November - March at CHIF1 = 17.67 inches

INVERNESS 3 SE (Records began in July 1948):

Driest Months		Driest Marches		Driest Jan-Mar		Driest Nov-Mar	
1	0.00 in Nov 2004	1	0.00 in 1956	1	2.28 in 2013	1	3.70 in 2012-13
	0.00 in Nov 1978	2	0.01 in 2006	2	2.47 in 1949	2	4.50 in 1955-56
	0.00 in Apr 1967	3	0.17 in 2019	3	2.91 in 2009	3	5.61 in 2004-05
	0.00 in Mar 1956	4	0.56 in 2012	4	3.08 in 1956	4	6.09 in 2011-12
	0.00 in Jan 1950	5	0.65 in 2013	5	3.71 in 1976	5	6.25 in 1975-76
6	Trace in Oct 1974	6	0.66 in 1967	6	4.21 in 2005	6	6.59 in 1949-50
7	0.01 in Nov 2016	7	0.77 in 1961	7	4.29 in 1950	7	7.06 in 1999-00
	0.01 in Mar 2006	8	0.80 in 1949	8	4.32 in 2012	8	7.22 in 1984-85
9	0.02 in Nov 1950	9	0.83 in 1966	9	4.67 in 2007	9	7.50 in 1950-51
10	0.03 in Oct 2010	10	0.85 in 1976	10	4.85 in 1985	10	7.61 in 2016-17
	0.03 in Oct 1961						7.61 in 1998-99

Total Rainfall so far in March 2020 = Trace
Normal Rainfall for March at INVF1 = 4.32 inches

Total Rainfall for January - March 2020 = 3.08 inches
Normal Rainfall for January - March at INVF1 = 10.27 inches

Total Rainfall for November 2019 - March 2020 = 8.16 inches
Normal Rainfall for November - March at INVF1 = 14.44 inches

BROOKSVILLE AREA (Records began in January 1892):

Driest Months	Driest Marches	Driest Jan-Mar	Driest Nov-Mar
1 0.00 in Oct 2010	1 Trace in 1956	1 2.42 in 2012	1 3.32 in 2011-12
0.00 in Nov 1967	2 0.04 in 2006	2 2.45 in 2000	2 4.39 in 2008-09
3 Trace in Apr 2017	3 0.07 in 2017	3 2.68 in 1917	3 4.57 in 1944-45
Trace in Nov 2016	4 0.10 in 1908	4 2.73 in 1898	4 5.26 in 1938-39
Trace in May 1977	5 0.15 in 1898	5 2.82 in 1911	5 5.59 in 1910-11
Trace in Apr 1967	6 0.16 in 1916	6 2.85 in 2009	6 5.94 in 2012-13
Trace in Mar 1956	7 0.17 in 2019	7 3.38 in 1945	7 5.99 in 1897-98
Trace in Jan 1950	0.17 in 1945	8 3.40 in 1939	8 6.54 in 1975-76
Trace in Nov 1931	9 0.20 in 1904	9 3.48 in 1921	9 6.90 in 1908-09
10 0.01 in Nov 1978	10 0.41 in 1921	10 3.57 in 1976	10 7.08 in 1998-99
0.01 in Oct 1974			
0.01 in Dec 1955			

Total Rainfall so far in March 2020 = 0.02 inches

Normal Rainfall for March at BKV = 3.70 inches

Total Rainfall for January - March 2020 = 3.49 inches

Normal Rainfall for January - March at BKV = 10.29 inches

Total Rainfall for November 2019 - March 2020 = 10.35 inches

Normal Rainfall for November - March at BKV = 14.59 inches

ST LEO (Records began in April 1895):

Driest Months	Driest Marches	Driest Jan-Mar	Driest Nov-Mar
1 0.00 in Oct 2010	1 Trace in 1907	1 1.43 in 1907	1 2.26 in 1906-07
0.00 in Jan 1950	2 0.01 in 1895	2 2.13 in 1898	2 4.34 in 2016-17
3 Trace in Apr 1967	3 0.02 in 2006	3 2.29 in 1916	3 4.52 in 2011-12
Trace in Nov 1960	4 0.10 in 1908	4 2.49 in 1949	4 4.92 in 1934-35
Trace in Mar 1907	5 0.19 in 1904	5 2.91 in 1911	5 5.32 in 2008-09
6 0.01 in Feb 1911	6 0.30 in 1949	6 3.19 in 2009	6 5.64 in 1948-49
0.01 in Mar 1895	7 0.33 in 1956	7 3.25 in 2000	7 5.76 in 1938-39
8 0.02 in Mar 2006	8 0.38 in 1917	8 3.51 in 1938	8 6.01 in 2012-13
0.02 in Nov 1978	9 0.47 in 1898	9 3.64 in 1935	9 6.09 in 1897-98
10 0.03 in Oct 2010	10 0.50 in 1967	10 3.71 in 2007	10 6.25 in 1910-11
0.03 in May 2000			
0.03 in Nov 1931			
0.03 in Nov 1928			

Total Rainfall so far in March 2020 = 0.00 inches

Normal Rainfall for March at STLf1 = 4.15 inches

Total Rainfall for January - March 2020 = 3.19 inches

Normal Rainfall for January - March at STLf1 = 10.48 inches

Total Rainfall for November 2019 - March 2020 = 9.67 inches

Normal Rainfall for November - March at STLf1 = 15.43 inches

TARPON SPRINGS (Records began in January 1892):

Driest Months		Driest Marches		Driest Jan-Mar		Driest Nov-Mar	
1	0.00 in Nov 2016	1	0.00 in 1907	1	1.89 in 1907	1	3.27 in 1906-07
	0.00 in May 2001	2	0.02 in 2006	2	1.94 in 1898	2	3.77 in 1938-39
	0.00 in May 2000	3	0.04 in 1908	3	2.08 in 1916	3	3.91 in 1934-35
	0.00 in Apr 1967	4	0.11 in 1949	4	2.35 in 2007	4	4.19 in 2008-09
	0.00 in Jan 1950	5	0.26 in 1898	5	2.53 in 1911	5	4.65 in 2016-17
	0.00 in Mar 1907	6	0.34 in 1956	6	2.55 in 2009	6	4.95 in 1975-76
7	Trace in Nov 1939	7	0.47 in 1945	7	2.55 in 1976	7	5.50 in 1910-11
	Trace in Nov 1931	8	0.53 in 1935	8	2.94 in 2000	8	5.59 in 2006-07
	Trace in May 1927	9	0.59 in 2017	9	3.02 in 1935	9	5.68 in 1944-45
	Trace in Apr 1896	10	0.60 in 1990	10	3.06 in 1939	10	5.92 in 1897-98

Total Rainfall so far in March 2020 = 0.00 inches
Normal Rainfall for March at TRPF1 = 3.81 inches

Total Rainfall for January - March 2020 = 4.01 inches
Normal Rainfall for January - March at TRPF1 = 9.73 inches

Total Rainfall for November 2019 - March 2020 = 9.99 inches
Normal Rainfall for November - March at TRPF1 = 14.83 inches

TAMPA AREA (Records began in April 1890):

Driest Months		Driest Marches		Driest Jan-Mar		Driest Nov-Mar	
1	Trace in Oct 2010	1	Trace in 2006	1	0.74 in 1949	1	1.97 in 1906-07
	Trace in Mar 2006		Trace in 1907	2	1.32 in 1907	2	3.62 in 1975-76
	Trace in May 2001	3	0.06 in 1956	3	1.97 in 1916	3	3.65 in 1934-35
	Trace in Apr 1981	4	0.08 in 1908	4	2.02 in 1898	4	3.94 in 1948-49
	Trace in Apr 1967		0.08 in 1898	5	2.46 in 1935	5	4.24 in 1938-39
	Trace in Nov 1960	6	0.20 in 1945	6	2.53 in 1976	6	4.39 in 2016-17
	Trace in Jan 1950	7	0.22 in 1949	7	2.59 in 1923	7	4.43 in 1931-32
	Trace in Mar 1907	8	0.35 in 2018	8	2.66 in 2000	8	4.68 in 1917-18
9	0.01 in Nov 2016	9	0.41 in 2000	9	2.69 in 1917	9	5.15 in 1897-98
	0.01 in Nov 1978	10	0.47 in 1917	10	2.89 in 1997	10	5.37 in 2011-12
							5.37 in 1998-99

Total Rainfall so far in March 2020 = Trace
Normal Rainfall for March at TPA = 3.03 inches

Total Rainfall for January - March 2020 = 2.91 inches
Normal Rainfall for January - March at TPA = 8.07 inches

Total Rainfall for November 2019 - March 2020 = 7.96 inches
Normal Rainfall for November - March at TPA = 12.09 inches

ST PETERSBURG AREA (Records began in August 1914):

Driest Months		Driest Marches		Driest Jan-Mar		Driest Nov-Mar	
1	0.00 in Apr 1967	1	0.03 in 1956	1	1.18 in 1949	1	2.57 in 1938-39
	0.00 in May 1953	2	0.09 in 2006	2	1.31 in 1956	2	2.64 in 2016-17
	0.00 in Oct 1942		0.09 in 1939	3	1.44 in 1916	3	2.89 in 2011-12
	0.00 in Nov 1931	4	0.19 in 1917	4	1.54 in 1976	4	3.00 in 1934-35
5	Trace in Oct 2010	5	0.24 in 1916	5	1.80 in 1935	5	3.19 in 1975-76
	Trace in May 2007	6	0.31 in 2002	6	1.87 in 2012	6	4.26 in 1955-56
	Trace in Apr 1981		0.31 in 1949	7	2.01 in 1939	7	4.29 in 1917-18
	Trace in Jan 1950	8	0.37 in 1945	8	2.27 in 2013	8	4.60 in 2008-09
9	0.01 in Apr 1974	9	0.40 in 2012	9	2.33 in 2017	9	4.66 in 1948-49
10	0.02 in May 2000	10	0.50 in 1918	10	2.61 in 2009	10	4.85 in 2012-13
	0.02 in Nov 1960						

Total Rainfall so far in March 2020 = 0.00 inches

Normal Rainfall for March at SPG = 3.75 inches

Total Rainfall for January - March 2020 = 2.05 inches

Normal Rainfall for January - March at SPG = 9.04 inches

Total Rainfall for November 2019 - March 2020 = 7.22 inches

Normal Rainfall for November - March at SPG = 13.69 inches

PLANT CITY (Records began in September 1892):

Driest Months		Driest Marches		Driest Jan-Mar		Driest Nov-Mar	
1	0.00 in Apr 2001	1	0.00 in 1908	1	0.98 in 1907	1	1.43 in 1906-07
	0.00 in Apr 1981		0.00 in 1907	2	1.38 in 1949	2	3.51 in 1975-76
	0.00 in Apr 1967	3	0.01 in 2006	3	1.56 in 1916	3	3.84 in 2016-17
	0.00 in Nov 1960	4	0.08 in 1999	4	1.57 in 1898	4	4.40 in 1934-35
	0.00 in Jan 1950	5	0.21 in 1945	5	1.94 in 1976	5	4.53 in 2011-12
	0.00 in Nov 1931	6	0.32 in 1916	6	2.55 in 1997	6	4.74 in 1944-45
	0.00 in Feb 1911	7	0.39 in 1975	7	2.69 in 2012	7	4.94 in 1910-11
	0.00 in Dec 1908	8	0.40 in 2017	8	3.15 in 1911	8	5.07 in 1897-98
	0.00 in Mar 1908	9	0.46 in 2002	9	3.37 in 2017	9	5.46 in 1967-68
	0.00 in Mar 1907	10	0.50 in 1935		3.37 in 1935	10	5.49 in 1948-49
	0.00 in Nov 1905						

Total Rainfall so far in March 2020 = 0.02 inches

Normal Rainfall for March at PLCF1 = 3.57 inches

Total Rainfall for January - March 2020 = 2.49 inches

Normal Rainfall for January - March at PLCF1 = 9.01 inches

Total Rainfall for November 2019 - March 2020 = 7.09 inches

Normal Rainfall for November - March at PLCF1 = 13.50 inches

LAKELAND AREA (Records began in January 1915):

Driest Months	Driest Marches	Driest Jan-Mar	Driest Nov-Mar
1 0.00 in Oct 2010	1 0.22 in 2006	1 1.24 in 1949	1 3.49 in 2011-12
0.00 in Apr 1967	0.22 in 1916	2 1.75 in 1916	2 3.90 in 1934-35
0.00 in Nov 1924	3 0.53 in 1925	3 2.80 in 2012	3 4.41 in 1948-49
4 Trace in Nov 1916	4 0.57 in 2009	4 2.83 in 1976	4 5.30 in 2012-13
Trace in Nov 1960	5 0.63 in 2000	5 3.02 in 2000	5 5.31 in 1928-29
Trace in Feb 1918	6 0.67 in 2007	6 3.06 in 1956	6 6.22 in 2016-17
Trace in Dec 1917	7 0.68 in 2002	7 3.18 in 1935	7 6.27 in 1931-32
Trace in Nov 1917	8 0.69 in 2017	8 3.28 in 1954	8 6.31 in 1999-00
9 0.03 in Nov 1931	9 0.74 in 2012	9 3.33 in 2013	9 6.35 in 1955-56
10 0.04 in Apr 2001	10 0.78 in 1949	10 3.46 in 1968	6.35 in 1915-16
0.04 in Oct 1974			
0.04 in Jan 1927			

Total Rainfall so far in March 2020 = 0.00 inches
Normal Rainfall for March at LLDF1 = 3.89 inches

Total Rainfall for January - March 2020 = 2.09 inches
Normal Rainfall for January - March at LLDF1 = 9.53 inches

Total Rainfall for November 2019 - March 2020 = 7.95 inches
Normal Rainfall for November - March at LLDF1 = 14.43 inches

WINTER HAVEN AREA (Records began in January 1941):

Driest Months	Driest Marches	Driest Jan-Mar	Driest Nov-Mar
1 0.00 in Apr 1981	1 0.30 in 1956	1 1.94 in 1956	1 3.54 in 2011-12
0.00 in Apr 1967	2 0.38 in 2006	2 2.32 in 2013	2 4.09 in 2012-13
0.00 in Nov 1960	3 0.48 in 2002	3 3.11 in 2000	3 4.31 in 2017-18
4 Trace in Nov 2011	4 0.57 in 1945	4 3.19 in 2009	4 4.61 in 2016-17
5 0.01 in Nov 2012	5 0.58 in 2018	5 3.21 in 2012	5 5.24 in 1955-56
6 0.02 in Oct 2010	0.58 in 2017	3.21 in 1976	6 6.51 in 2008-09
0.02 in Jan 1950	7 0.60 in 2000	7 3.28 in 2017	6.51 in 1974-75
8 0.03 in May 2000	8 0.61 in 2007	8 3.45 in 2018	8 6.60 in 1944-45
0.03 in Dec 1987	9 0.64 in 1999	9 3.95 in 2006	9 6.66 in 1967-68
0.03 in Dec 1984	10 0.72 in 2009	10 4.09 in 1968	10 7.16 in 1999-00

Total Rainfall so far in March 2020 = 0.03 inches
Normal Rainfall for March at GIF = 3.57 inches

Total Rainfall for January - March 2020 = 2.05 inches
Normal Rainfall for January - March at GIF = 8.68 inches

Total Rainfall for November 2019 - March 2020 = 7.38 inches
Normal Rainfall for November - March at GIF = 13.44 inches

BARTOW (Records began in June 1892):

Driest Months		Driest Marches		Driest Jan-Mar		Driest Nov-Mar	
1	0.00 in Nov 2016	1	0.02 in 1908	1	1.55 in 1949	1	2.89 in 2011-12
	0.00 in Oct 2000	2	0.05 in 1945	2	1.96 in 1916	2	3.45 in 1944-45
	0.00 in Apr 1967	3	0.10 in 2006	3	2.02 in 1898	3	3.84 in 1938-39
	0.00 in Nov 1960	4	0.36 in 2002	4	2.05 in 2006	4	4.01 in 1910-11
	0.00 in Feb 1911	5	0.41 in 1999	5	2.10 in 1911	5	4.06 in 1934-35
	0.00 in Dec 1906	6	0.45 in 2007	6	2.14 in 1956	6	4.13 in 2016-17
7	Trace in Apr 2000	7	0.46 in 1897	7	2.26 in 2012		4.13 in 2005-06
	Trace in Apr 1907	8	0.47 in 1967		2.26 in 1939	8	4.32 in 2008-09
9	0.02 in May 1965	9	0.52 in 1921	9	2.32 in 2000	9	4.44 in 1948-49
	0.02 in Nov 1931	10	0.54 in 1920	10	2.37 in 1950	10	5.31 in 1955-56
	0.02 in Mar 1908						

Total Rainfall so far in March 2020 = 0.00 inches

Normal Rainfall for March at BARF1 = 3.48 inches

Total Rainfall for January - March 2020 = 2.58 inches

Normal Rainfall for January - March at BARF1 = 8.21 inches

Total Rainfall for November 2019 - March 2020 = 6.59 inches

Normal Rainfall for November - March at BARF1 = 12.87 inches

SARASOTA-BRADENTON AREA (Records began in January 1911):

Driest Months		Driest Marches		Driest Jan-Mar		Driest Nov-Mar	
1	0.00 in Apr 1967	1	Trace in 1939	1	0.91 in 1949	1	2.22 in 1975-76
	0.00 in Jan 1950	2	0.10 in 1945	2	1.12 in 1976	2	2.38 in 1938-39
	0.00 in Oct 1942	3	0.21 in 1949	3	1.82 in 1956	3	2.77 in 1934-35
	0.00 in May 1941	4	0.26 in 1956	4	1.83 in 1939	4	3.46 in 1948-49
	0.00 in Dec 1933	5	0.28 in 2007	5	1.85 in 1935	5	4.22 in 1931-32
	0.00 in Nov 1931	6	0.34 in 1935	6	2.13 in 1916	6	4.24 in 2016-17
7	Trace in Apr 2017	7	0.37 in 1976	7	2.19 in 2013	7	4.29 in 2012-13
	Trace in Oct 2010	8	0.44 in 1917	8	2.26 in 1917	8	4.37 in 2011-12
	Trace in May 2007	9	0.47 in 2004	9	2.35 in 2000	9	4.53 in 1955-56
	Trace in Nov 1940	10	0.48 in 2017	10	2.67 in 1975	10	4.60 in 1944-45
	Trace in Mar 1939						
	Trace in Nov 1928						
	Trace in Feb 1911						

Total Rainfall so far in March 2020 = Trace

Normal Rainfall for March at SRQ = 3.86 inches

Total Rainfall for January - March 2020 = 2.84 inches

Normal Rainfall for January - March at SRQ = 9.05 inches

Total Rainfall for November 2019 - March 2020 = 6.17 inches

Normal Rainfall for November - March at SRQ = 13.51 inches

VENICE (Records began in April 1955):

Driest Months		Driest Marches		Driest Jan-Mar		Driest Nov-Mar	
1	0.00 in Oct 2010	1	0.10 in 1956	1	1.38 in 1974	1	3.85 in 1975-76
	0.00 in Feb 2001	2	0.14 in 2009	2	2.02 in 2009	2	4.39 in 1973-74
	0.00 in Nov 1991	3	0.19 in 1981	3	2.62 in 1976	3	4.50 in 2011-12
	0.00 in Apr 1967	4	0.33 in 1977	4	2.73 in 2012	4	4.53 in 2016-17
5	0.02 in Nov 2007	5	0.36 in 2006	5	2.84 in 2003	5	4.65 in 2008-09
6	0.04 in Dec 2016	6	0.39 in 1967	6	2.90 in 1975	6	5.04 in 1955-56
	0.04 in Nov 2001	7	0.40 in 1974	7	2.95 in 2000	7	5.20 in 1996-97
8	0.06 in Nov 2016	8	0.53 in 2004	8	2.97 in 1968	8	5.88 in 1970-71
	0.06 in May 1994	9	0.54 in 2002	9	3.08 in 1956	9	6.02 in 2012-13
	0.06 in May 1989	10	0.56 in 1975	10	3.20 in 1997	10	6.05 in 1966-67
	0.06 in Apr 1975						

Total Rainfall so far in March 2020 = 0.00 inches

Normal Rainfall for March at VNCF1 = 3.81 inches

Total Rainfall for January - March 2020 = 2.16 inches

Normal Rainfall for January - March at VNCF1 = 8.49 inches

Total Rainfall for November 2019 - March 2020 = 5.30 inches

Normal Rainfall for November - March at VNCF1 = 12.63 inches

MYAKKA RIVER STATE PARK (Temperature records began in March 1956
and Rainfall records began in Sep 1943):

Driest Months		Driest Marches		Driest Jan-Mar		Driest Nov-Mar	
1	0.00 in Oct 2010	1	0.08 in 1956	1	1.38 in 1950	1	2.62 in 1944-45
	0.00 in Nov 2001	2	0.13 in 2006	2	1.40 in 1949	2	3.69 in 1975-76
	0.00 in Apr 2001	3	0.16 in 1945	3	1.95 in 1945	3	3.73 in 1949-50
	0.00 in Oct 1974	4	0.23 in 1966	4	2.45 in 1976	4	3.88 in 1948-49
	0.00 in Jan 1974	5	0.29 in 2002	5	2.55 in 1975	5	4.63 in 2011-12
	0.00 in Jan 1950		0.29 in 1977	6	2.70 in 1968	6	4.65 in 1943-44
7	Trace in Feb 2001	7	0.41 in 1953	7	3.26 in 2006	7	5.07 in 1955-56
	Trace in Apr 1981	8	0.42 in 1949	8	3.36 in 2009	8	5.40 in 2008-09
9	0.01 in Feb 1950	9	0.47 in 1974	9	3.41 in 2003	9	5.79 in 2017-18
10	0.02 in May 2007	10	0.48 in 2007	10	3.44 in 2012	10	5.82 in 2012-13
	0.02 in May 2000				3.44 in 1956		
	0.02 in Feb 1999						
	0.02 in Apr 1987						
	0.02 in Nov 1950						

Total Rainfall so far in March 2020 = 0.00 inches

Normal Rainfall for March at MKCF1 = 3.86 inches

Total Rainfall for January - March 2020 = 3.33 inches

Normal Rainfall for January - March at MKCF1 = 9.41 inches

Total Rainfall for November 2019 - March 2020 = 7.80 inches

Normal Rainfall for November - March at MKCF1 = 14.02 inches

WAUCHULA 2 N (Records began in January 1933):

Driest Months	Driest Marches	Driest Jan-Mar	Driest Nov-Mar
1 0.00 in Apr 2001	1 0.00 in 2002	1 1.45 in 1974	1 2.38 in 2011-12
0.00 in Feb 2001	2 0.08 in 1967	2 1.46 in 1949	2 3.04 in 1975-76
0.00 in Oct 2000	3 0.18 in 1945	3 1.92 in 2012	3 3.13 in 1948-49
0.00 in May 2000	4 0.20 in 1935	4 2.08 in 1976	4 3.40 in 1934-35
0.00 in Apr 1978	5 0.22 in 2012	5 2.12 in 1935	5 3.84 in 1944-45
0.00 in Apr 1967	6 0.30 in 2006	6 2.57 in 2013	6 3.99 in 1973-74
7 Trace in Oct 1940	0.30 in 1974	2.57 in 1939	7 4.42 in 2012-13
8 0.01 in May 1965	8 0.35 in 1976	8 2.73 in 1956	8 4.47 in 1938-39
9 0.02 in Nov 1940	9 0.57 in 2004	9 3.00 in 1975	9 4.58 in 1966-67
10 0.03 in Jan 1974	0.57 in 1939	10 3.10 in 1945	10 4.67 in 1955-56
0.03 in Nov 1967			4.67 in 1932-33
0.03 in Apr 1963			

Total Rainfall so far in March 2020 = 0.00 inches
Normal Rainfall for March at WAUF1 = 3.79 inches

Total Rainfall for January - March 2020 = 2.49 inches
Normal Rainfall for January - March at WAUF1 = 8.54 inches

Total Rainfall for November 2019 - March 2020 = 7.65 inches
Normal Rainfall for November - March at WAUF1 = 12.83 inches

ARCADIA (Records began in January 1899):

Driest Months	Driest Marches	Driest Jan-Mar	Driest Nov-Mar
1 0.00 in Feb 2001	1 0.02 in 1956	1 0.93 in 1916	1 2.50 in 1948-49
0.00 in Jan 1990	2 0.06 in 1935	2 1.03 in 1920	2 3.00 in 1910-11
0.00 in Apr 1987	3 0.10 in 1990	3 1.17 in 1949	3 3.21 in 1955-56
0.00 in Jan 1974	4 0.18 in 1939	4 1.50 in 1956	4 3.32 in 1944-45
0.00 in Apr 1970	5 0.23 in 1945	5 1.69 in 1974	5 3.36 in 2000-01
0.00 in Apr 1967	6 0.30 in 1974	6 1.78 in 1911	6 3.43 in 1975-76
0.00 in May 1950	7 0.31 in 1977	7 1.94 in 1976	7 3.78 in 2016-17
0.00 in Feb 1916	8 0.41 in 1976	8 2.31 in 1945	3.78 in 1949-50
0.00 in Jan 1916	9 0.43 in 1981	9 2.42 in 2009	9 3.85 in 2008-09
10 Trace in Nov 1996	10 0.53 in 2002	10 2.71 in 2013	10 3.92 in 1928-29
Trace in Oct 1942			
Trace in Nov 1940			
Trace in Nov 1928			

Total Rainfall so far in March 2020 = 0.00 inches
Normal Rainfall for March at ARCF1 = 3.26 inches

Total Rainfall for January - March 2020 = 4.29 inches
Normal Rainfall for January - March at ARCF1 = 7.64 inches

Total Rainfall for November 2019 - March 2020 = 8.68 inches
Normal Rainfall for November - March at ARCF1 = 11.53 inches

ARCHBOLD BIO STN (Records began in January 1969):

Driest Months		Driest Marches		Driest Jan-Mar		Driest Nov-Mar	
1	0.00 in Nov 2016	1	0.05 in 1974	1	1.47 in 1974	1	3.13 in 2016-17
	0.00 in Oct 2010	2	0.06 in 2002	2	1.66 in 1975	2	3.55 in 2008-09
	0.00 in Nov 2008	3	0.22 in 2004	3	1.80 in 2009	3	3.86 in 1970-71
	0.00 in Feb 2001	4	0.66 in 2007	4	2.21 in 2007	4	4.02 in 1975-76
5	0.03 in Apr 2006	5	0.76 in 1999	5	2.59 in 2017	5	4.15 in 1973-74
6	0.05 in Mar 1974	6	0.78 in 1972	6	2.85 in 2018	6	4.27 in 2011-12
7	0.06 in Mar 2002	7	0.87 in 2006	7	2.91 in 2013	7	4.52 in 2000-01
8	0.08 in Nov 1986	8	0.91 in 2009	8	3.01 in 2012	8	4.66 in 2006-07
	0.08 in Jan 1976	9	1.01 in 2012	9	3.29 in 1976	9	5.12 in 1974-75
	0.08 in Apr 1971	10	1.02 in 1977	10	3.32 in 1999	10	5.70 in 2017-18

Total Rainfall so far in March 2020 = 0.05 inches

Normal Rainfall for March at ACHF1 = 3.77 inches

Total Rainfall for January - March 2020 = 5.45 inches

Normal Rainfall for January - March at ACHF1 = 8.24 inches

Total Rainfall for November 2019 - March 2020 = 9.44 inches

Normal Rainfall for November - March at ACHF1 = 12.14 inches

PUNTA GORDA AREA (Records began in May 1914):

Driest Months		Driest Marches		Driest Jan-Mar		Driest Nov-Mar	
1	0.00 in Apr 1981	1	0.00 in 1956	1	0.71 in 1974	1	2.62 in 1973-74
	0.00 in Apr 1963	2	Trace in 1920	2	1.47 in 1939	2	3.11 in 2016-17
	0.00 in Mar 1956	3	0.09 in 2007	3	1.59 in 1923	3	3.16 in 1944-45
	0.00 in Feb 1950	4	0.10 in 1945	4	1.71 in 1950	4	3.40 in 1975-76
	0.00 in Jan 1950		0.10 in 1935	5	1.75 in 1916	5	3.56 in 1948-49
	0.00 in Jan 1949	6	0.15 in 1967	6	1.97 in 2009	6	3.58 in 1949-50
	0.00 in Apr 1946	7	0.16 in 1938	7	2.11 in 1949	7	3.86 in 2008-09
	0.00 in Oct 1942	8	0.21 in 1923	8	2.16 in 1976	8	3.97 in 1970-71
	0.00 in Dec 1933	9	0.28 in 2006	9	2.17 in 1945	9	4.06 in 1917-18
	0.00 in Nov 1931		0.28 in 1922	10	2.30 in 1921	10	4.07 in 2011-12

Total Rainfall so far in March 2020 = Trace

Normal Rainfall for March at PGD = 3.31 inches

Total Rainfall for January - March 2020 = 3.34 inches

Normal Rainfall for January - March at PGD = 7.61 inches

Total Rainfall for November 2019 - March 2020 = 7.35 inches

Normal Rainfall for November - March at PGD = 11.58 inches

FORT MYERS AREA (Records began in January 1902):

Driest Months	Driest Marches	Driest Jan-Mar	Driest Nov-Mar
1 0.00 in Jan 1950	1 0.00 in 1935	1 0.21 in 1949	1 1.29 in 1948-49
0.00 in Mar 1935	2 0.03 in 1974	2 0.57 in 1950	2 1.96 in 1938-39
3 Trace in Nov 2016	3 0.04 in 1939	3 0.78 in 1905	3 2.37 in 1910-11
Trace in Feb 2001	4 0.05 in 1956	4 1.14 in 1911	4 2.40 in 1906-07
Trace in Jan 2001	5 0.08 in 1907	5 1.20 in 1974	5 2.42 in 2000-01
Trace in Nov 2000	6 0.09 in 1977	6 1.22 in 2009	6 2.61 in 1908-09
Trace in Apr 1970	7 0.10 in 1945	7 1.36 in 2007	7 2.65 in 2016-17
Trace in Apr 1967	8 0.13 in 2007	1.36 in 1939	8 3.00 in 2011-12
Trace in Dec 1956	0.13 in 1949	9 1.48 in 1923	9 3.02 in 1973-74
Trace in Nov 1944	10 0.16 in 2017	10 1.57 in 1916	3.02 in 1934-35
Trace in Feb 1944			
Trace in Feb 1911			
Trace in Apr 1903			

Total Rainfall so far in March 2020 = 0.02 inches

Normal Rainfall for March at FMY = 2.88 inches

Total Rainfall for January - March 2020 = 2.44 inches

Normal Rainfall for January - March at FMY = 6.97 inches

Total Rainfall for November 2019 - March 2020 = 8.75 inches

Normal Rainfall for November - March at FMY = 10.64 inches

For more Climate information visit our web site at the following link:
<https://www.weather.gov/tampabay> and then go to the Climate and Past
Weather drop down menu above the graphical forecast images. Here you can
also find some more Local Drought Information.