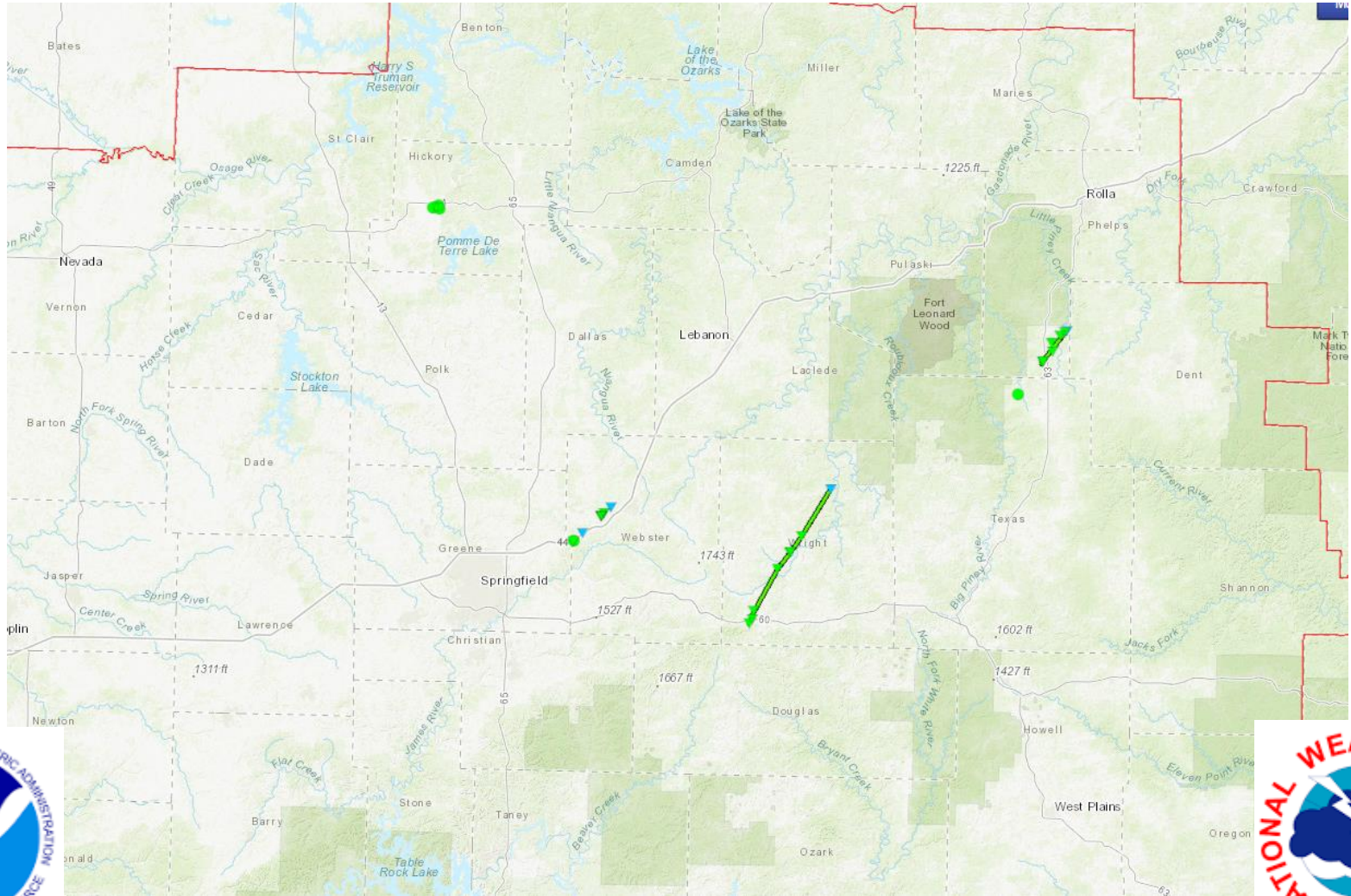


National Weather Service Damage Surveys From Storms May 21 2019



Status 05/22/2019 3:50 PM CDT

- 3 tornadoes confirmed.
- Information contained here is preliminary.
- ***Thanks to all emergency responders for their help in completing our surveys.***
- Link to kmz file:
[https://www.weather.gov/source/sgf/DamageKML/2019/May/May21/Torsu
m.kmz](https://www.weather.gov/source/sgf/DamageKML/2019/May/May21/Torsu
m.kmz)
- Link to this file: https://www.weather.gov/media/sgf/pdf/NWS_SGF_Tornadoes_05212019.pdf
- Our contact information:
- Springfield-Branson Regional Airport
5805 West Highway EE
Springfield, MO 65802-8430
Business: 417-863-8028 Recording: 417-869-4491
- Email: contact.sgf@noaa.gov



Preliminary Damage Survey Results

Marshfield – Webster County

Date 05/21/2019

Time (Local) 2:48 PM

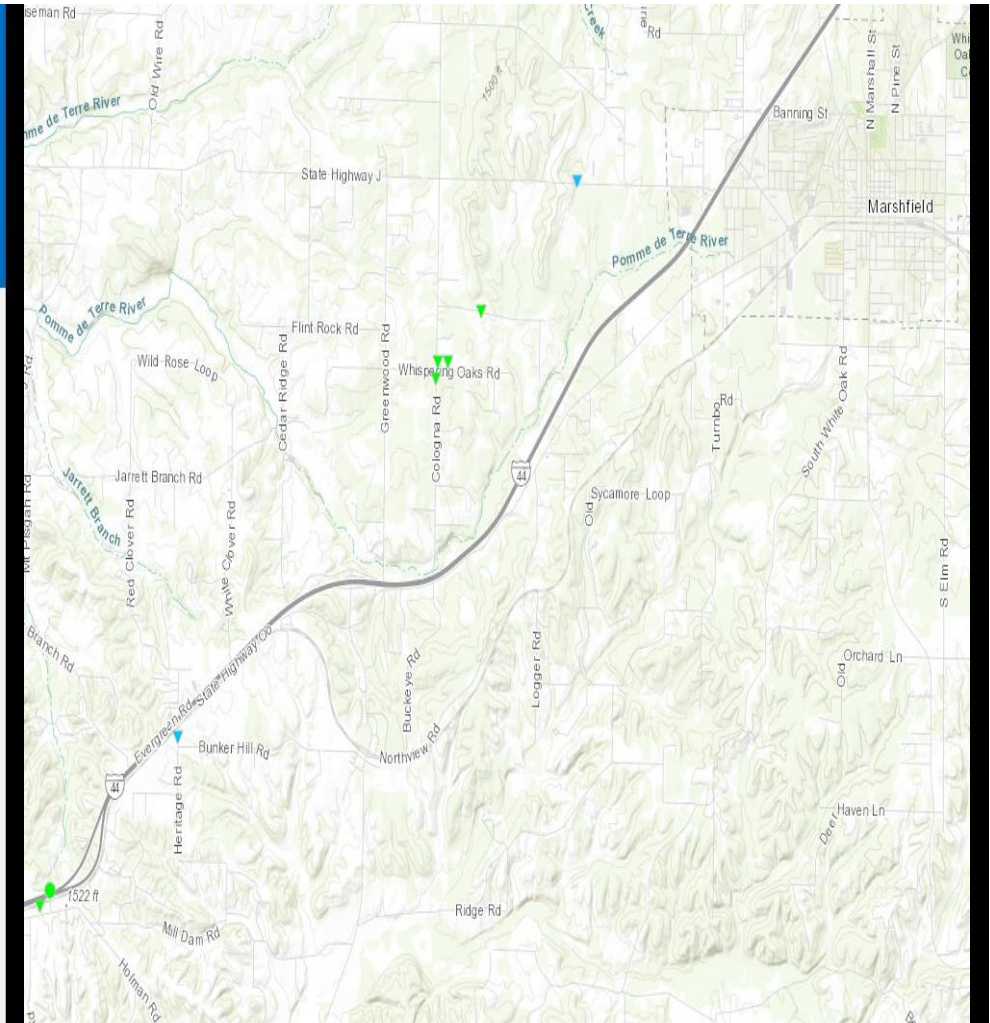
EF Rating EF-1

Est. Peak Winds 100 mph

Path Length Intermittent 7 miles

Max Width 100 yards

Injuries/Deaths 0/0



An NWS survey confirmed an EF1 tornado that tracked from near Interstate 44 and Jungle Road to 1.5 miles west of Marshfield. The tornado had an intermittent path of 7 miles, with estimated peak winds of 100 mph and a maximum width of 100 yards. The tornado produced roof damage and multiple uprooted and snapped trees.



NATIONAL WEATHER SERVICE
OCEANIC AND ATMOSPHERIC ADMINISTRATION



Preliminary Damage Survey Results

Mansfield/Hartville – Wright County

Date 05/21/2019

Time (Local) 3:17 PM

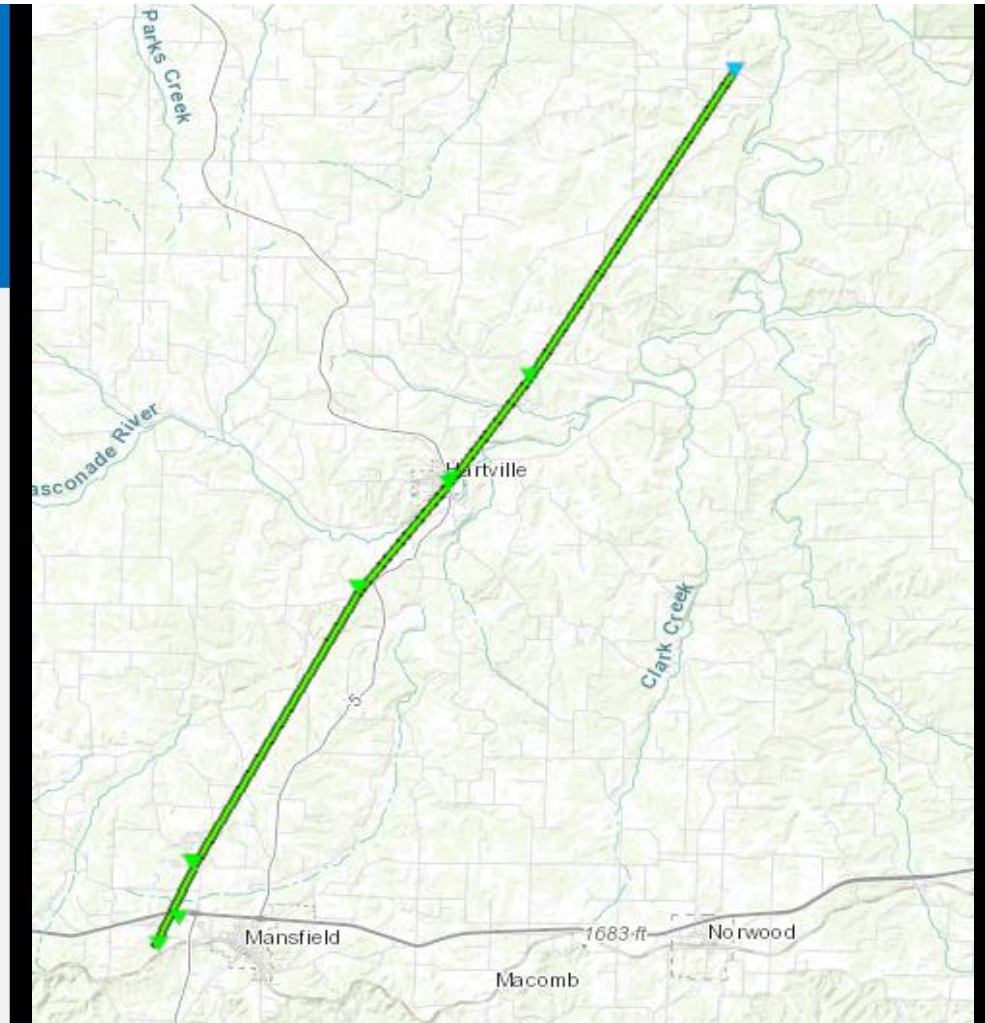
EF Rating EF-1

Est. Peak Winds 110 mph

Path Length 21.75 miles

Max Width 200 yards

Injuries/Deaths 0/0



A NWS survey confirmed an EF-1 Tornado that began 2 miles west of Mansfield and lifted near Highway H about 2 miles west of Manes. The tornado was on the ground from 3:17 PM until 3:40 PM for a total of 23 minutes. Peak winds were 110 mph, the maximum path width was 200 yards, and the path length was 21.75 miles. Numerous trees were snapped and uprooted along the tornado path, including in Mansfield and Hartville, with some large trees falling onto a home in Hartville. A grocery store in Hartville had the store front collapse and the back of the store blown in.



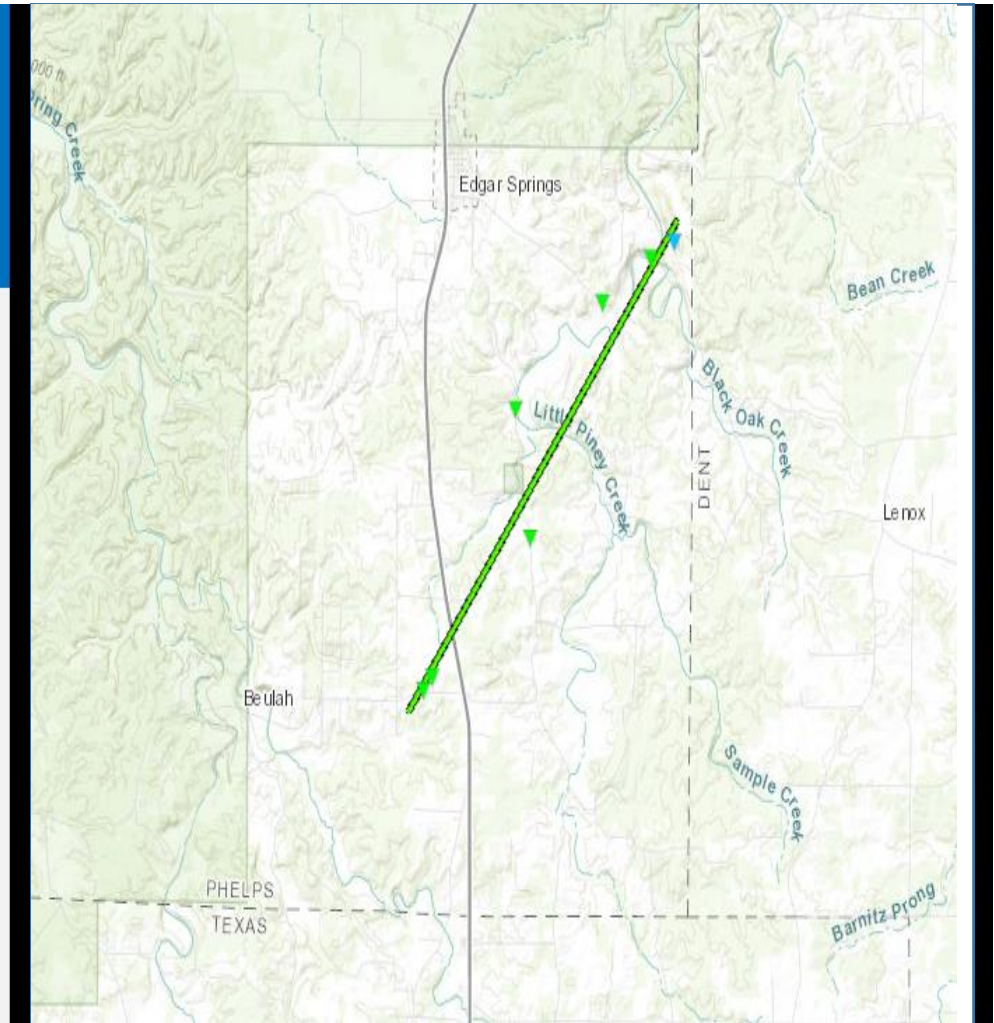
NATIONAL WEATHER SERVICE
OCEANIC AND ATMOSPHERIC ADMINISTRATION



Preliminary Damage Survey Results

Edgar Springs – Phelps County

Date	05/21/2019
Time (Local)	4:18 PM CDT
EF Rating	EF-1
Est. Peak Winds	100 mph
Path Length	5.86 miles
Max Width	800 yards
Injuries/Deaths	0/0



Hundred of trees uprooted along its path