

VWP – EVWP Comparison

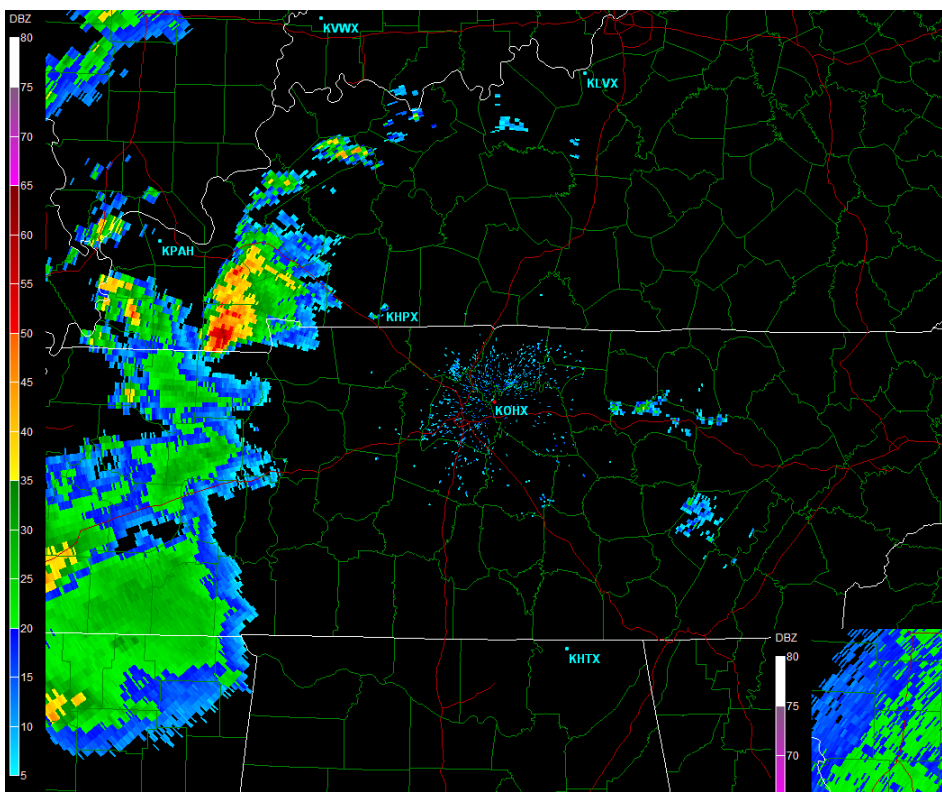
Nashville TN

KOHX

Squall Line Event

Feb 6, 2008

00:10Z through 12:54Z



Site: KOHX
 VST: 02/06/2008 00:10:42 UTC
 Prod: 02/06/2008 00:10:41 UTC
 VCP: 21
 Tilt: 0.501°

Select Sweep:
 Base Reflectivity
 Base Velocity
 Storm Relative
 Spectrum Width

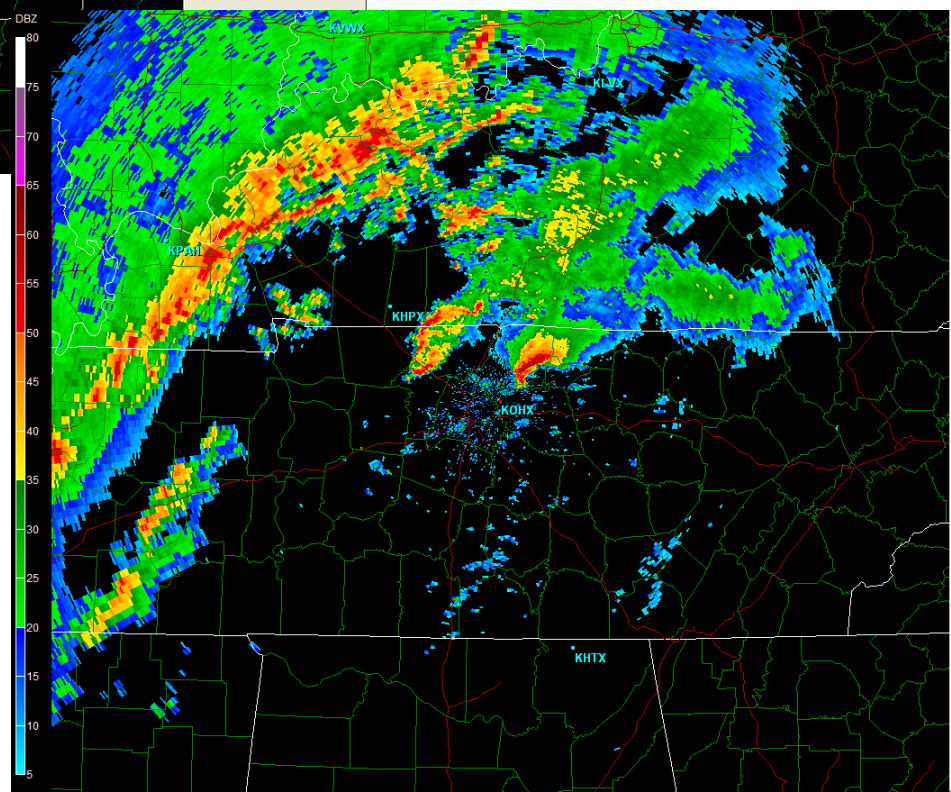
Select Tilt:
 0.5° 1.4° 2.5° 3.4°
 4.4° 6.0° 9.9° 14.6°
 19.6°

Warnings:
 Flash Flood - 0
 Thunderstorm - 0
 Tornado - 0

Smoothing
 Dealias

KOHX
 0.5° Reflectivity
 00:01Z

KOHX
 0.5° Reflectivity
 03:38Z



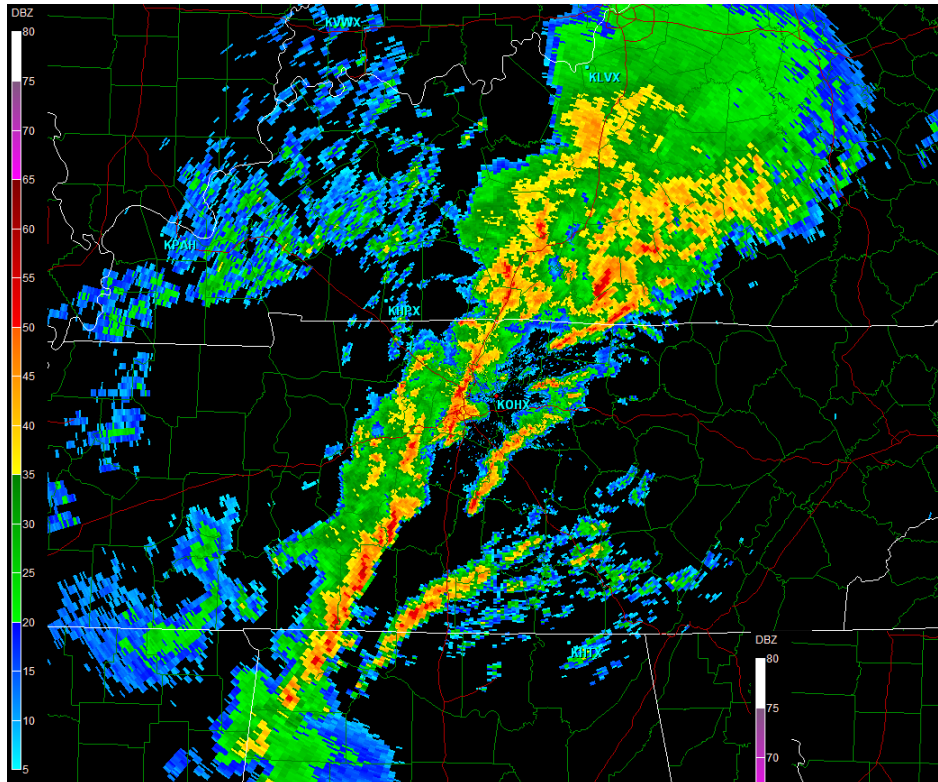
Site: KOHX
 VST: 02/06/2008 03:58:38 UTC
 Prod: 02/06/2008 03:58:37 UTC
 VCP: 12
 Tilt: 0.483°

Select Sweep:
 Base Reflectivity
 Base Velocity
 Storm Relative
 Spectrum Width

Select Tilt:
 0.5° 0.9° 1.3° 1.9°
 2.4° 3.2° 4.0° 5.1°
 6.5° 8.0° 10.1° 12.5°
 15.6° 19.5°

Warnings:
 Flash Flood - 0
 Thunderstorm - 0
 Tornado - 0

Smoothing
 Dealias



Site: KOHX
 VST: 02/06/2008 07:59:41 UTC
 Prod: 02/06/2008 07:59:39 UTC
 VCP: 12
 Tilt: 0.482°

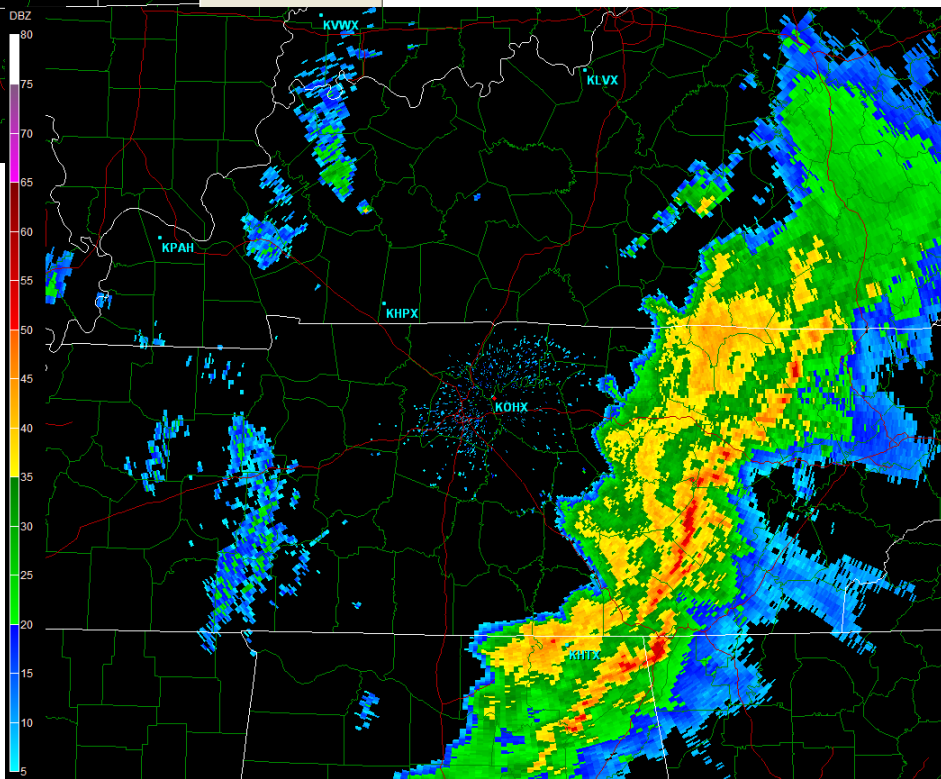
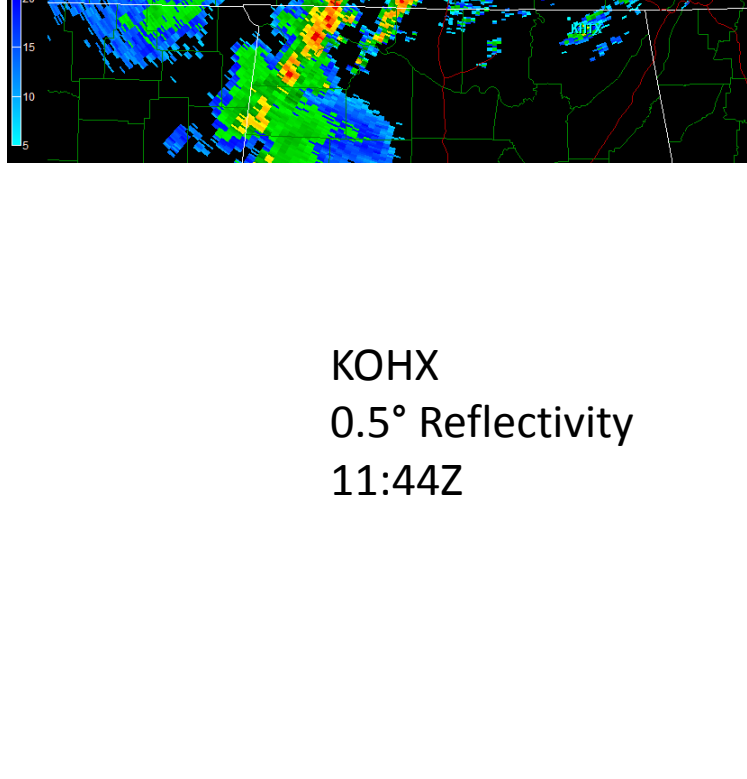
Select Sweep:
 Base Reflectivity
 Base Velocity
 Storm Relative
 Spectrum Width

Select Tilt:
 0.5° 0.9° 1.3° 1.8°
 2.4° 3.2° 4.0° 5.1°
 6.5° 8.0° 10.1° 12.5°
 15.6° 19.5°

Warnings:
 Flash Flood - 0
 Thunderstorm - 0
 Tornado - 0

Smoothing
 Dealias

KOHX
 0.5° Reflectivity
 07:59Z



Site: KOHX
 VST: 02/06/2008 11:44:07 UTC
 Prod: 02/06/2008 11:44:06 UTC
 VCP: 21
 Tilt: 0.496°

Select Sweep:
 Base Reflectivity
 Base Velocity
 Storm Relative
 Spectrum Width

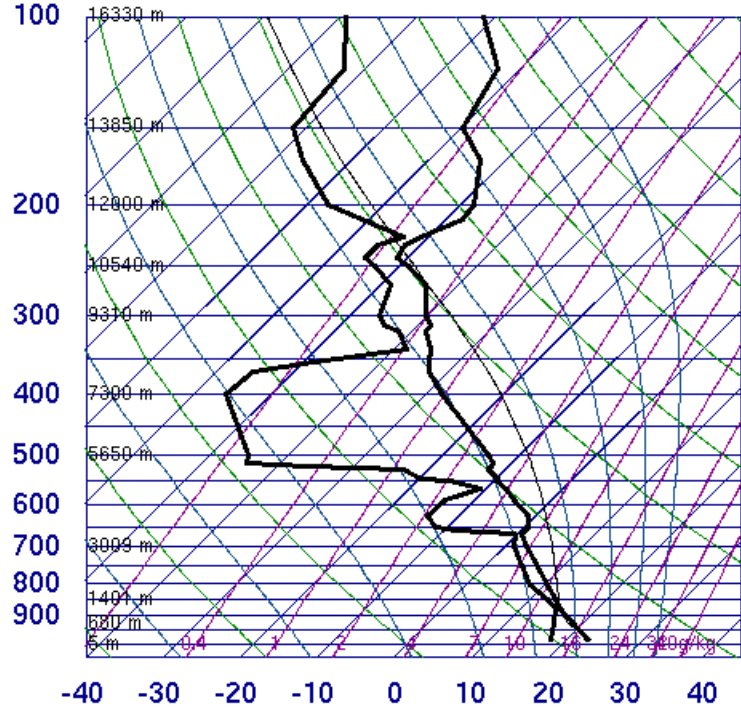
Select Tilt:
 0.5° 1.4° 2.5° 3.4°
 4.4° 6.0° 9.9° 14.6°
 19.6°

Warnings:
 Flash Flood - 0
 Thunderstorm - 0
 Tornado - 0

Smoothing
 Dealias

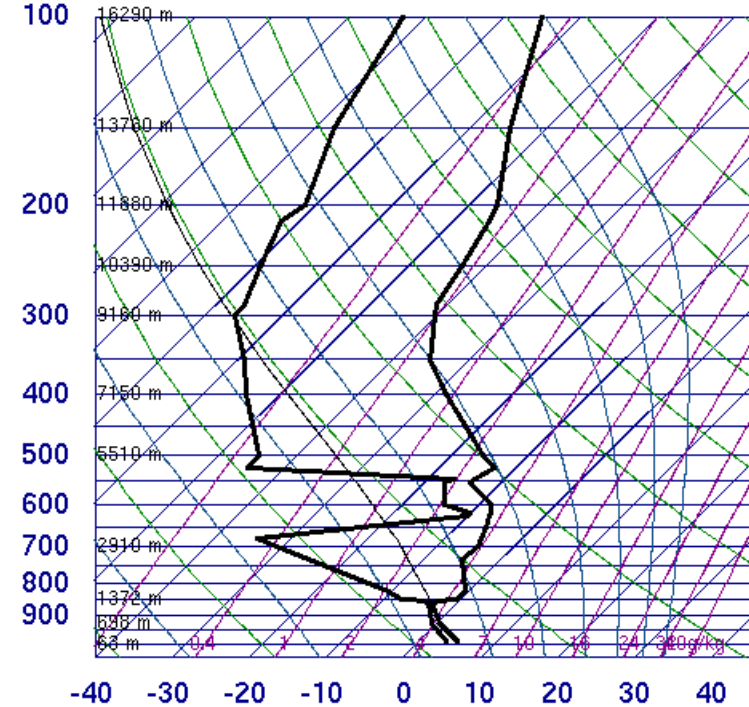
KOHX
 0.5° Reflectivity
 11:44Z

72340 LZK North Little Rock



00Z 06 Feb 2008 University of Wyoming

72340 LZK North Little Rock



12Z 06 Feb 2008 University of Wyoming

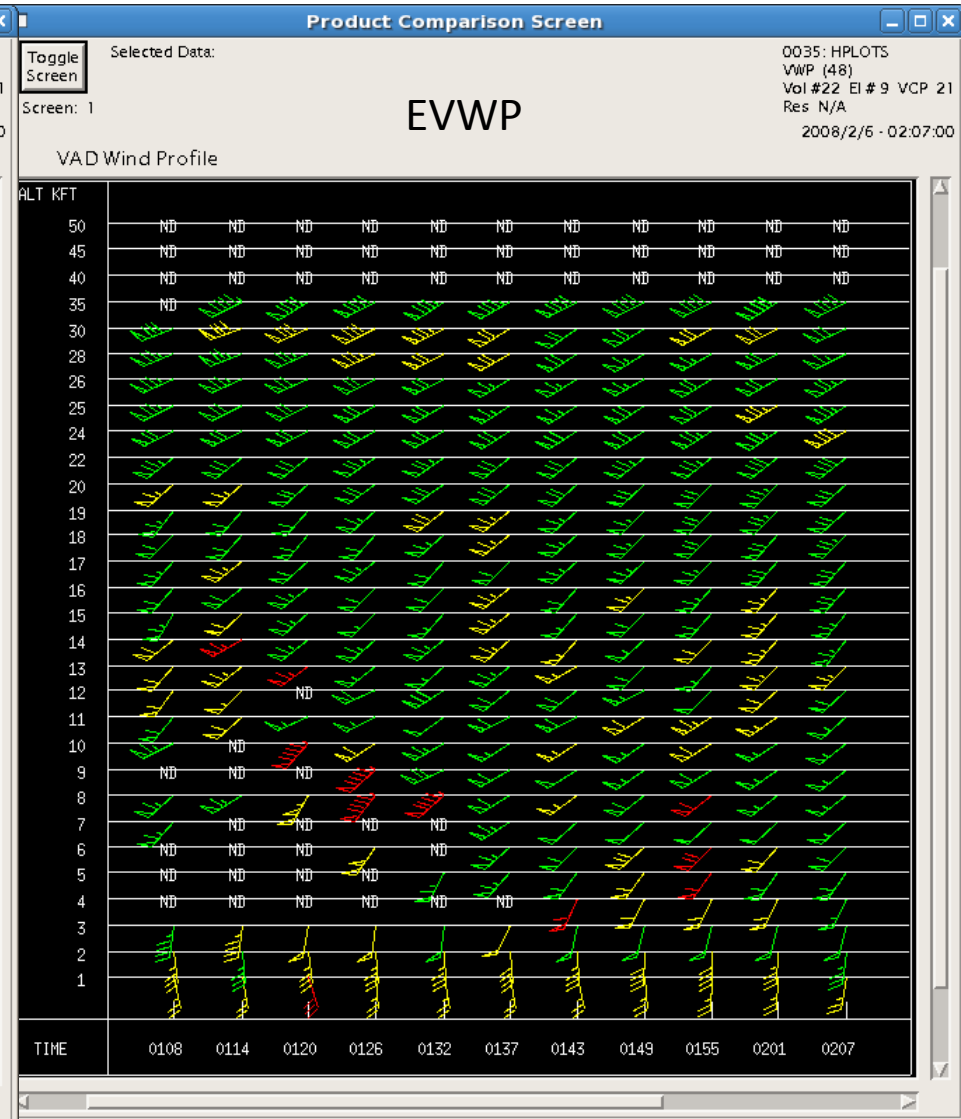
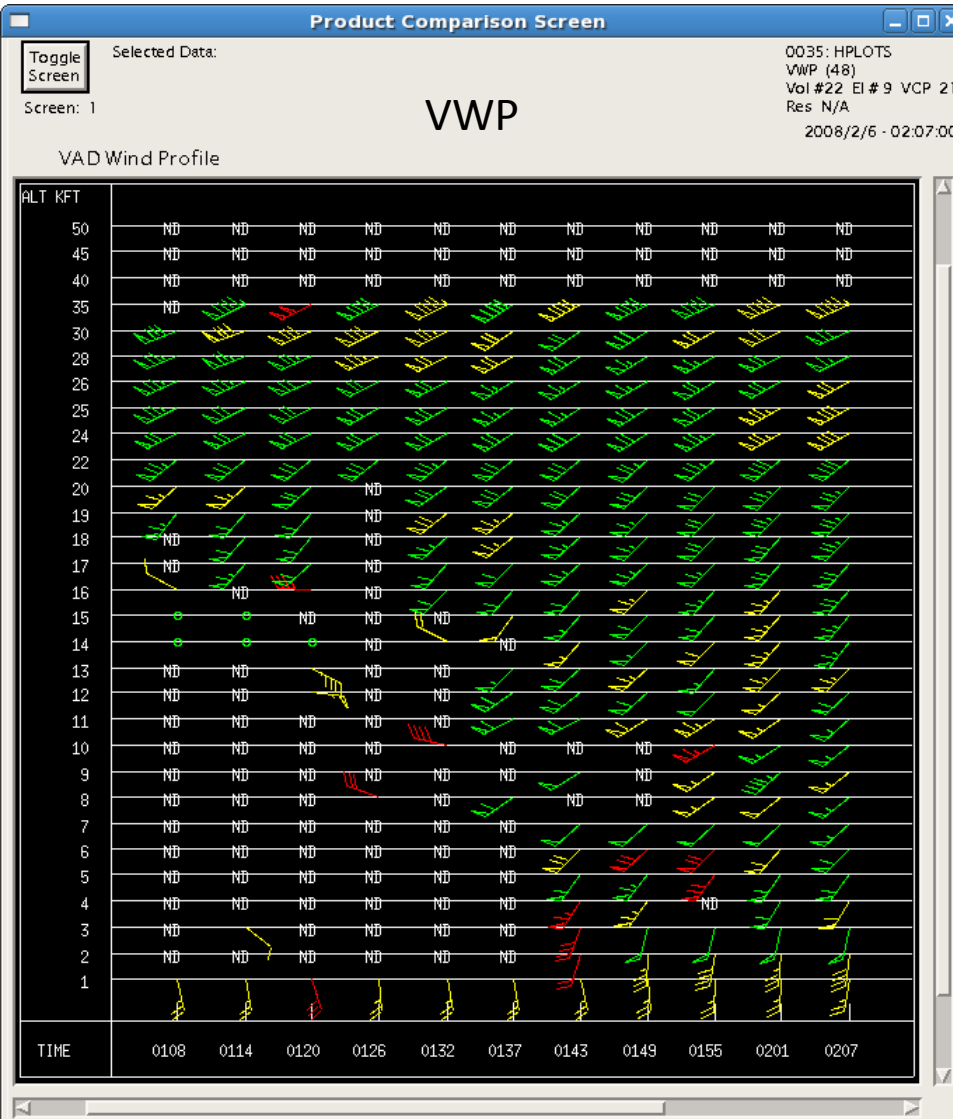
SLAT	34.83
SLON	-92.27
SELV	172.0
SHOW	18.05
LIFT	19.14
LFTV	19.10
SWET	190.0
KINX	-17.7
CTOT	9.60
VTOT	14.60
TOTL	24.20
CAPE	1.38
CAPV	2.17
CINS	0.00
CINV	0.00
EQLV	864.4
EQTV	859.4
LFCT	930.5
LFCV	932.9
BRCH	0.00
BRCV	0.01
LCLT	274.1
LCLP	938.2
MLTH	279.2
MLMR	4.43
THCK	544.7
PWAT	10.46

KOHX Feb 6, 2008 01:08Z – 02:07Z

EVWP Provided 25% More Wind Estimates than VWP

VWP Total Wind Estimates = 201

EVWP Total Wind Estimates - 251

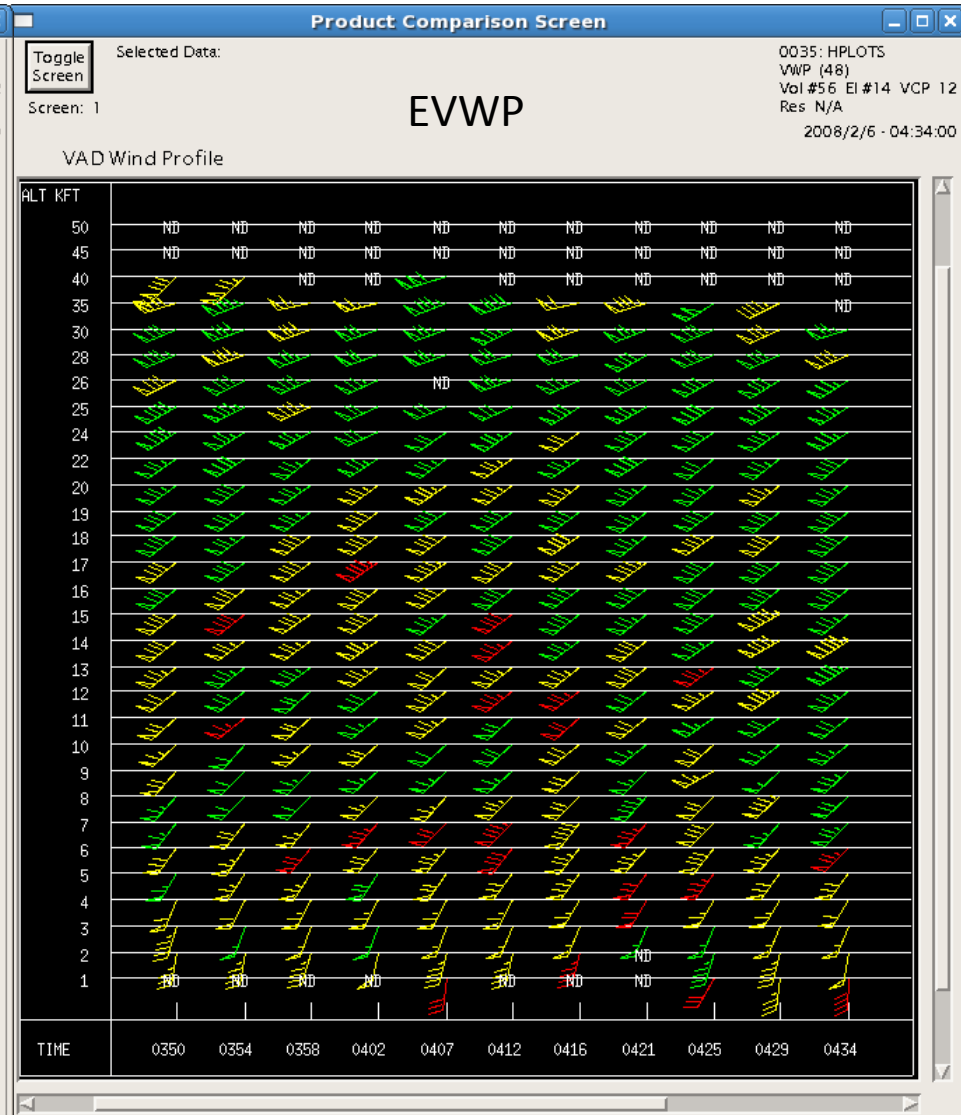
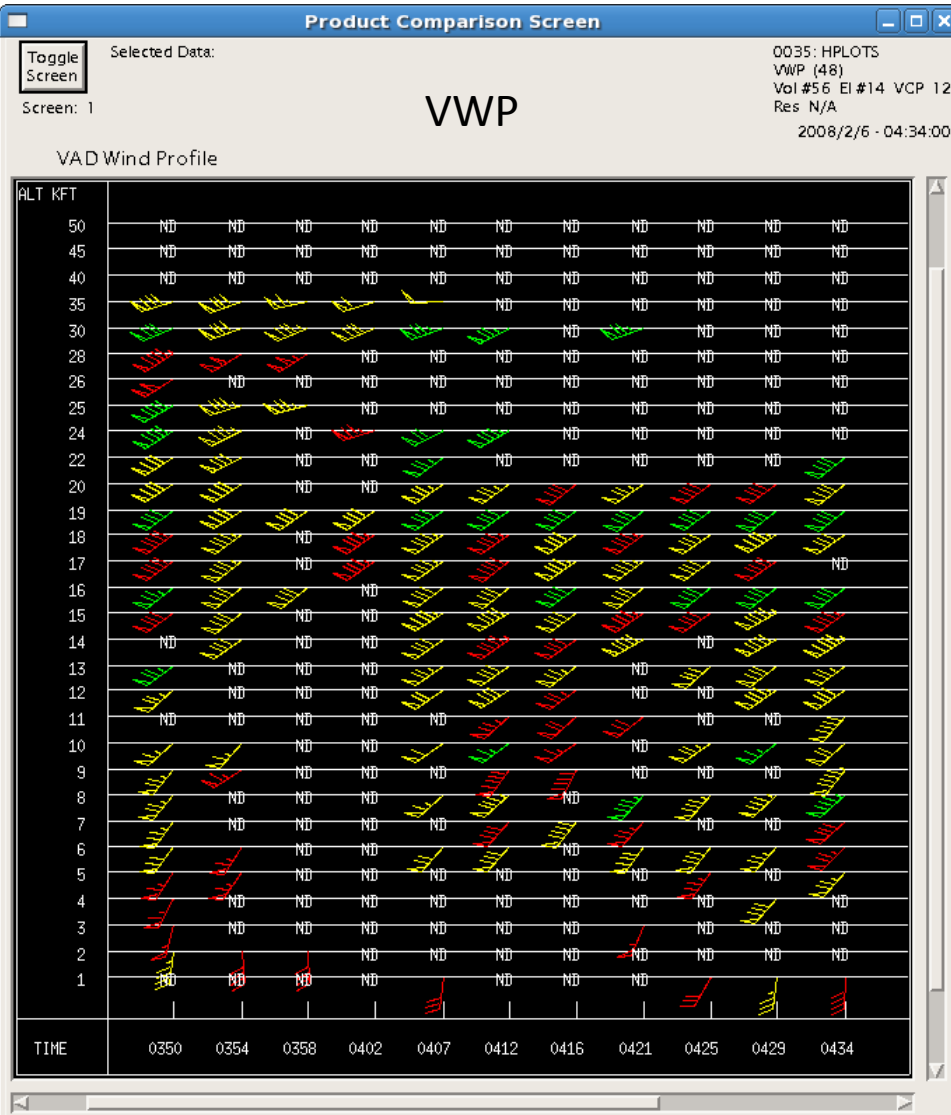


KOHX Feb 6, 2008 03:50Z – 04:34Z

EVWP Provided 83% More Wind Estimates than VWP

VWP Total Wind Estimates = 158

EVWP Total Wind Estimates - 289

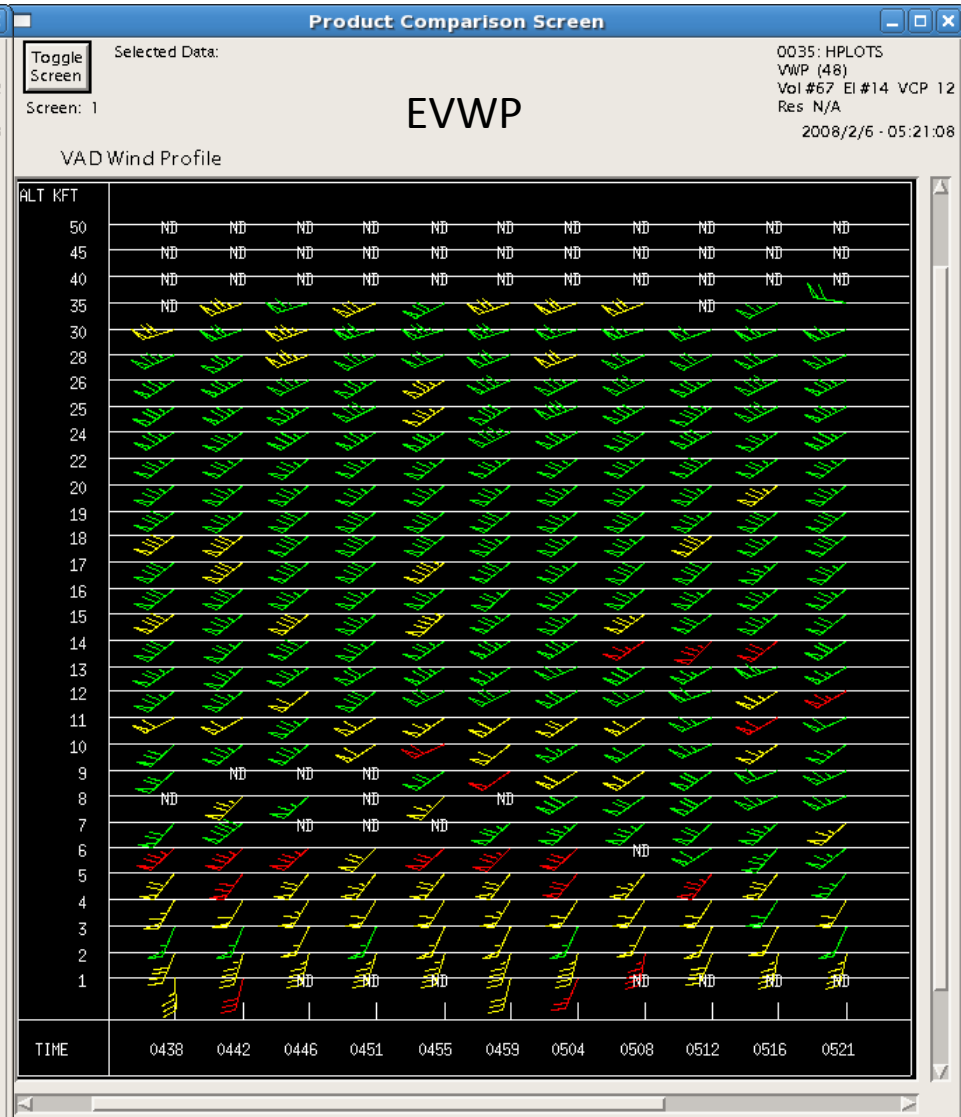
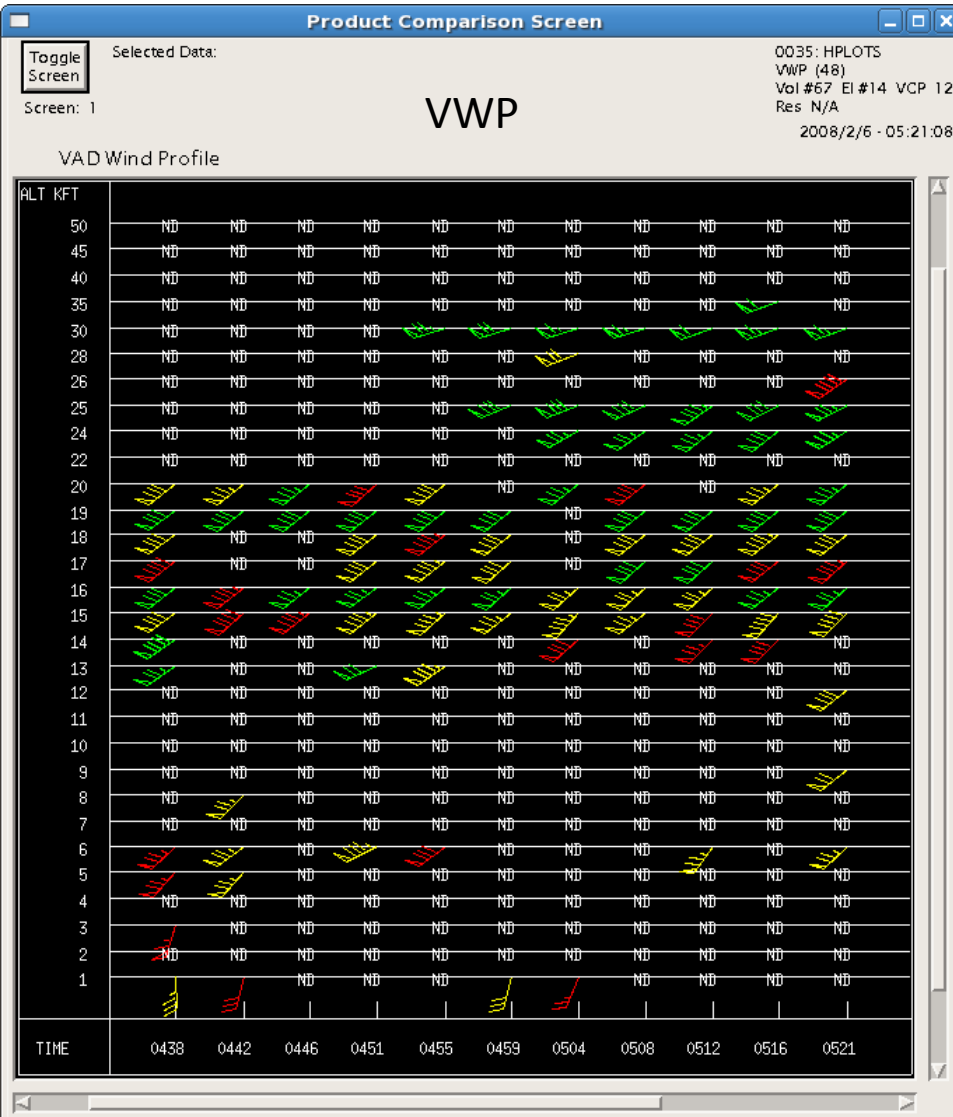


KOHX Feb 6, 2008 04:38Z – 05:21Z

EVWP Provided 175% More Wind Estimates than VWP

VWP Total Wind Estimates = 101

EVWP Total Wind Estimates - 278

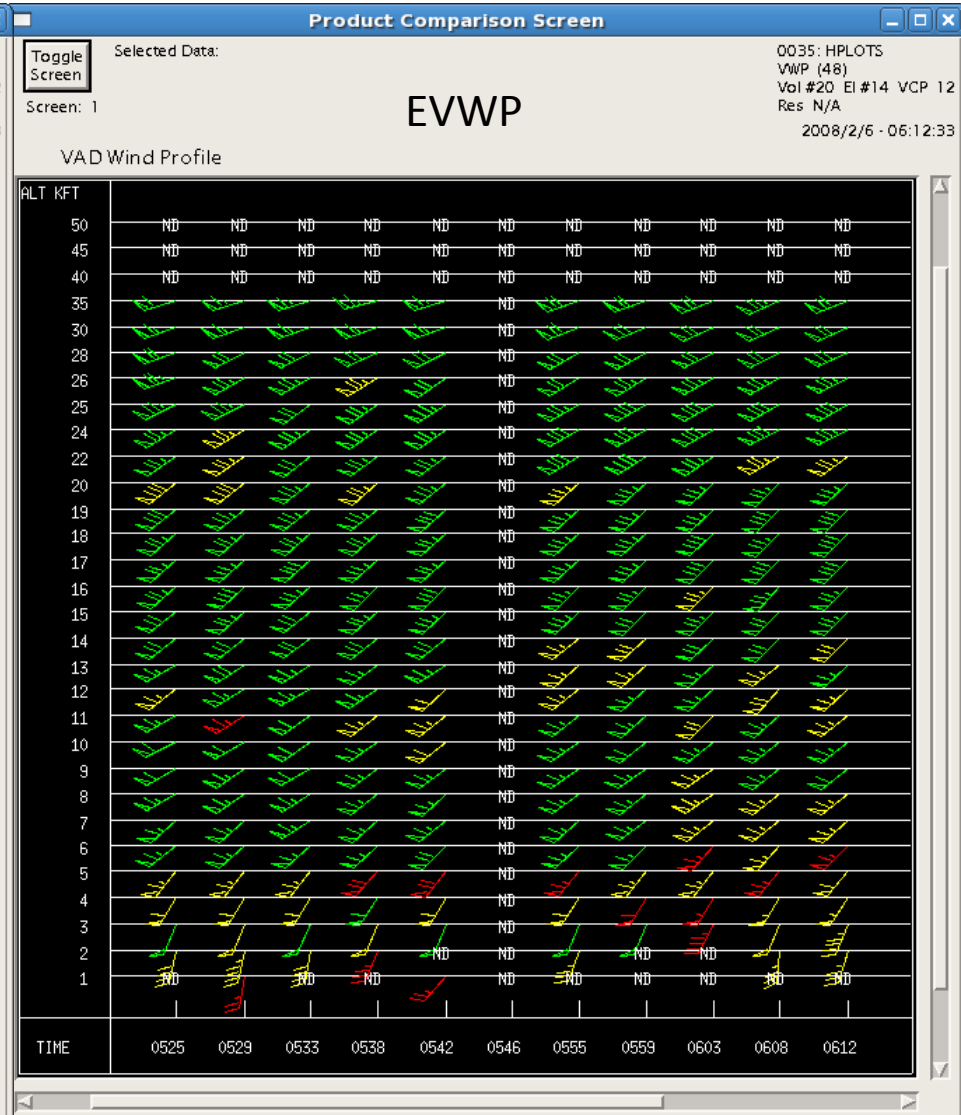
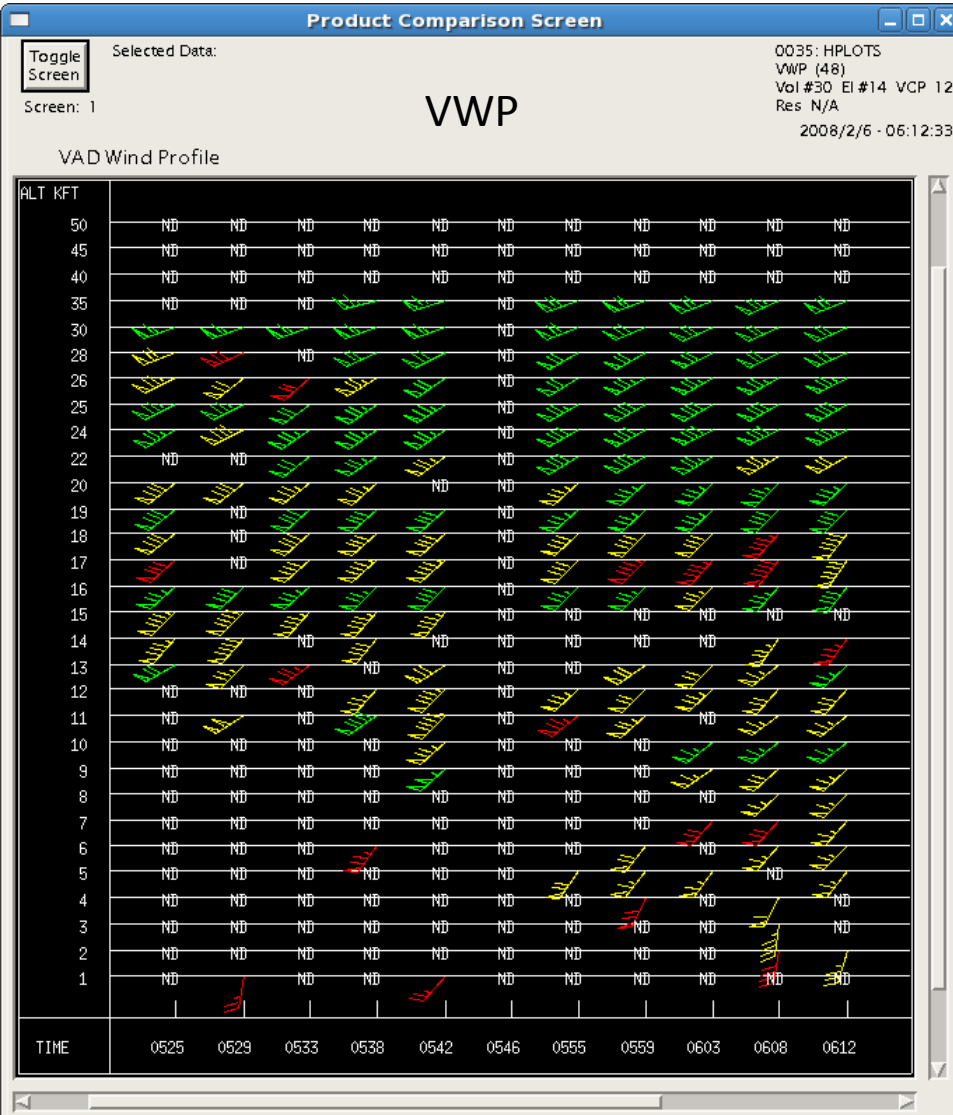


KOHX Feb 6, 2008 05:25Z – 06:12Z

EVWP Provided 52% More Wind Estimates than VWP

VWP Total Wind Estimates = 170

EVWP Total Wind Estimates - 259

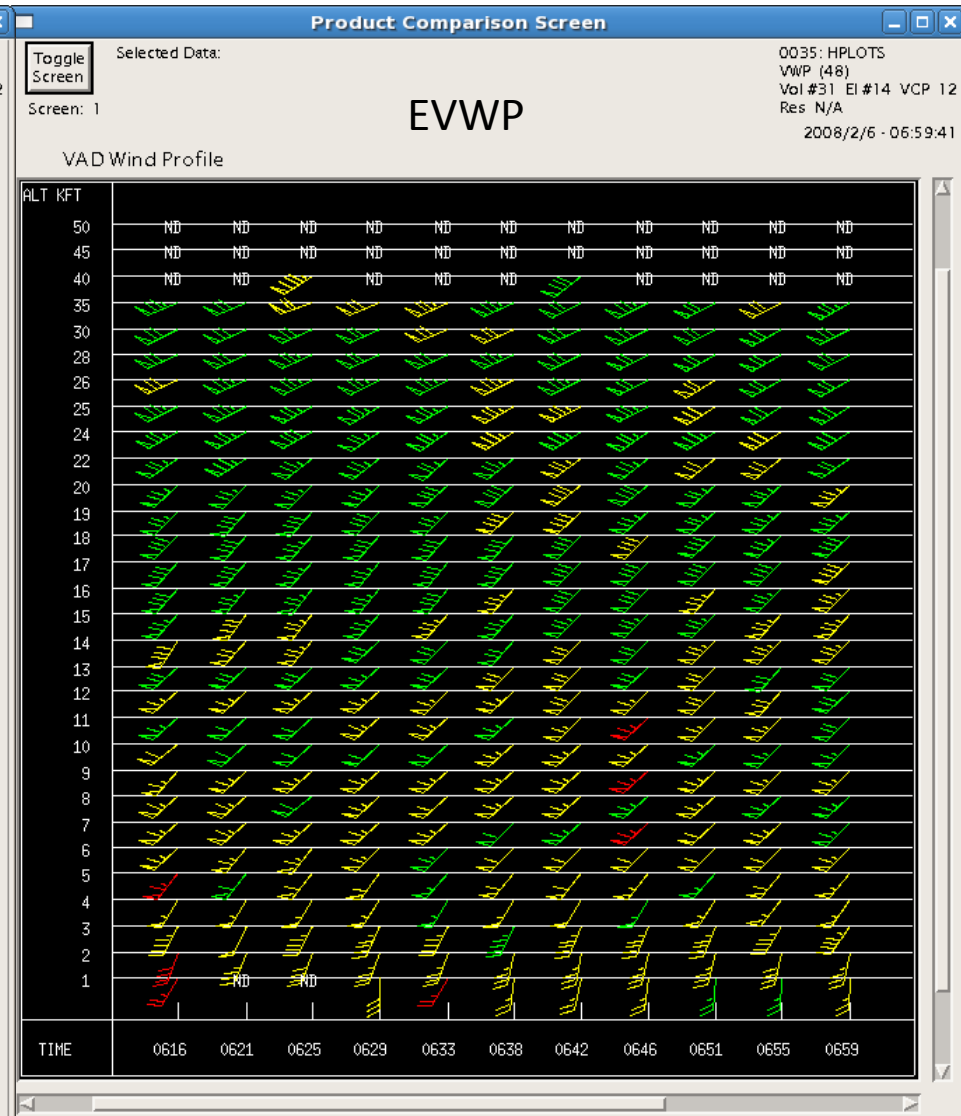
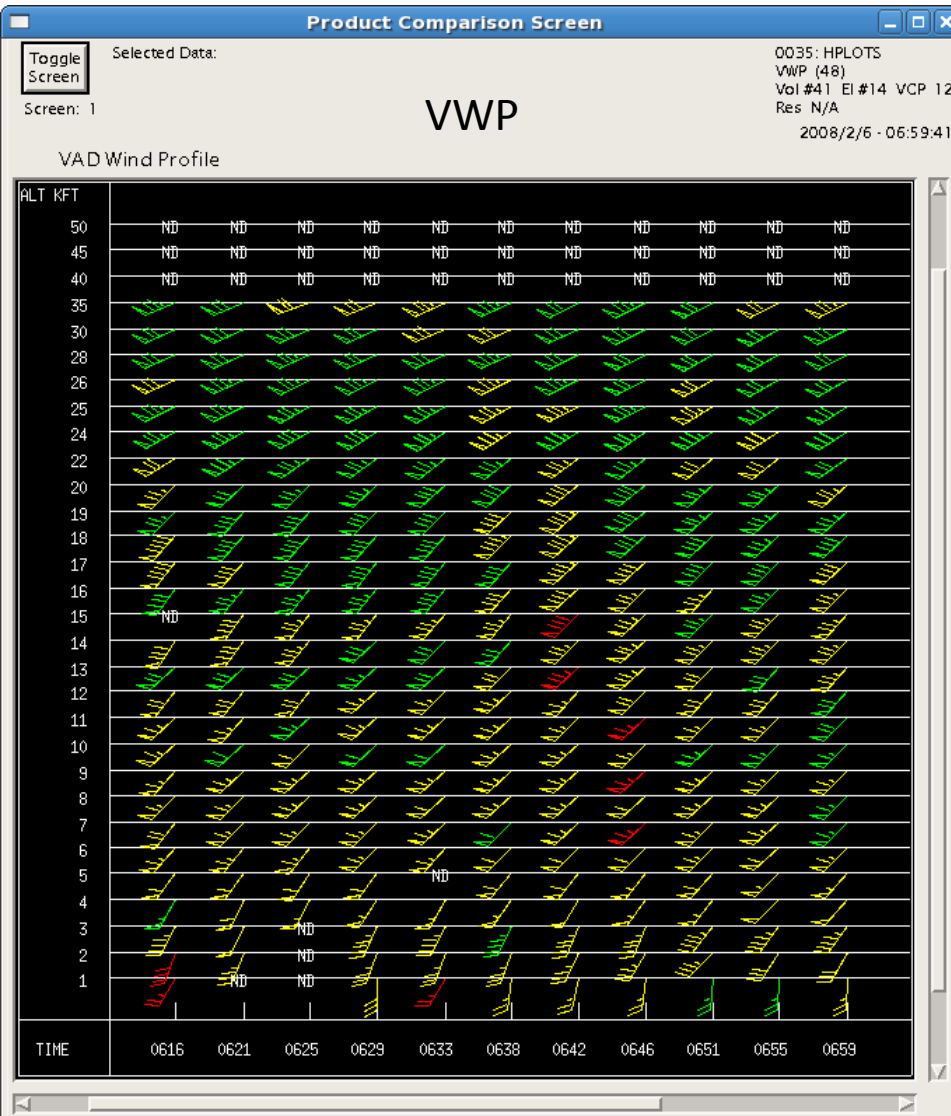


KOHX Feb 6, 2008 06:16Z – 06:59Z

EVWP Provided 2.1% More Wind Estimates than VWP

VWP Total Wind Estimates = 291

EVWP Total Wind Estimates - 297

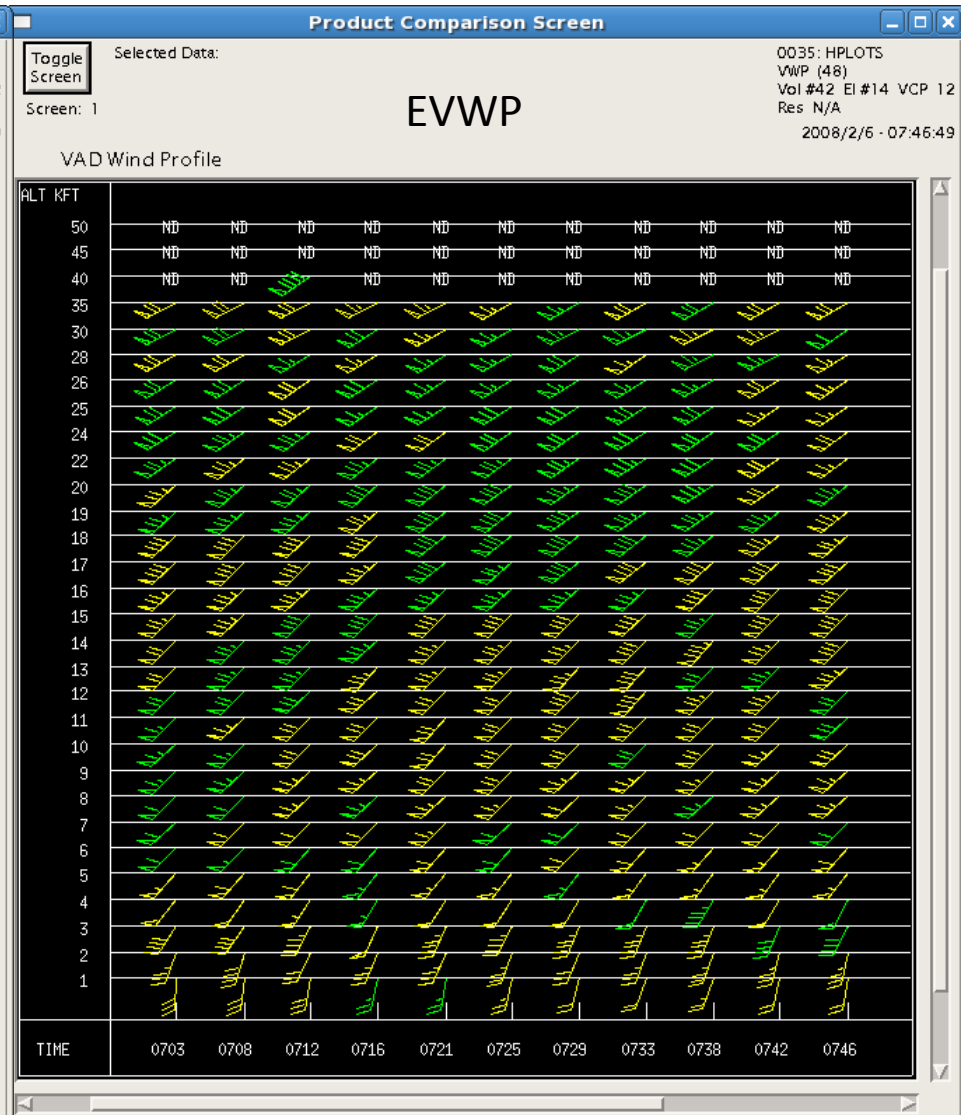
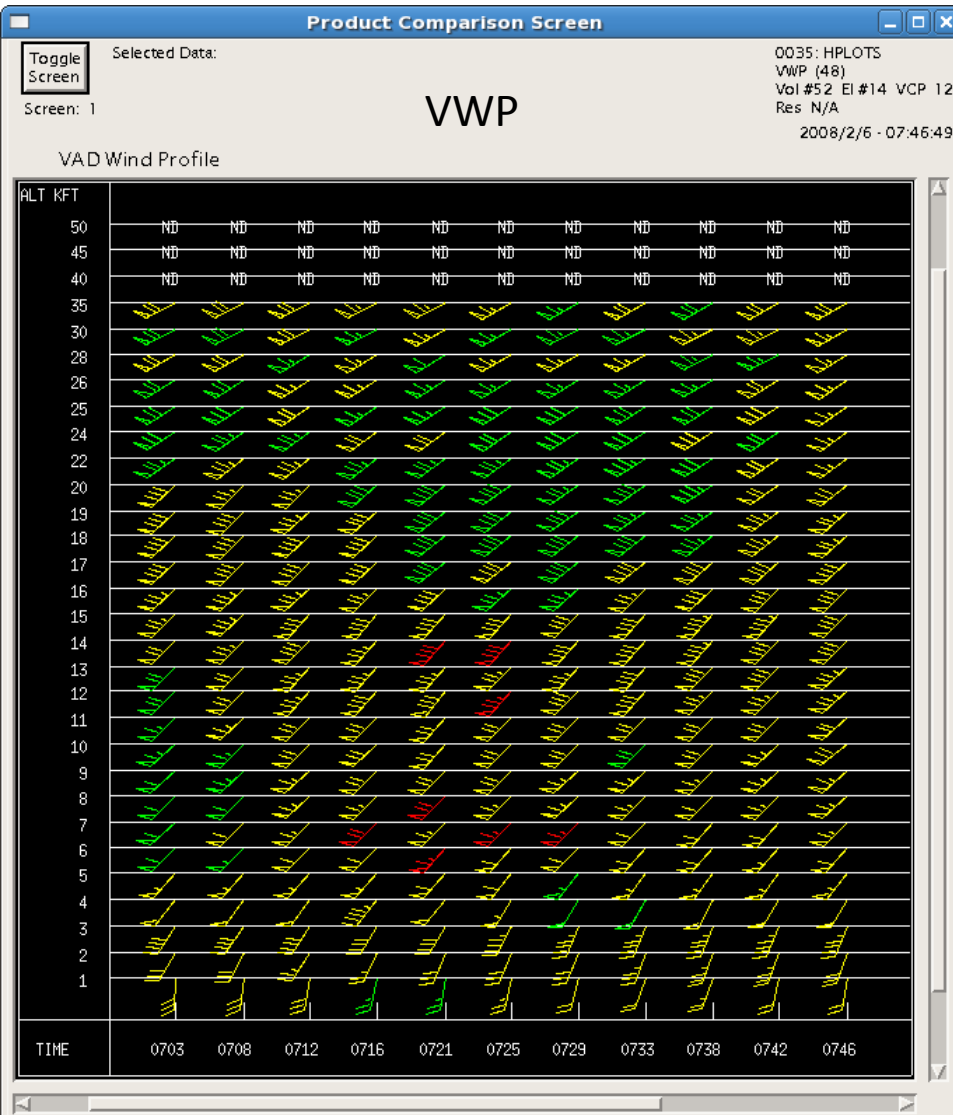


KOHX Feb 6, 2008 07:03Z – 07:46Z

EVWP Provided 0.3% More Wind Estimates than VWP

VWP Total Wind Estimates = 297

EVWP Total Wind Estimates - 298

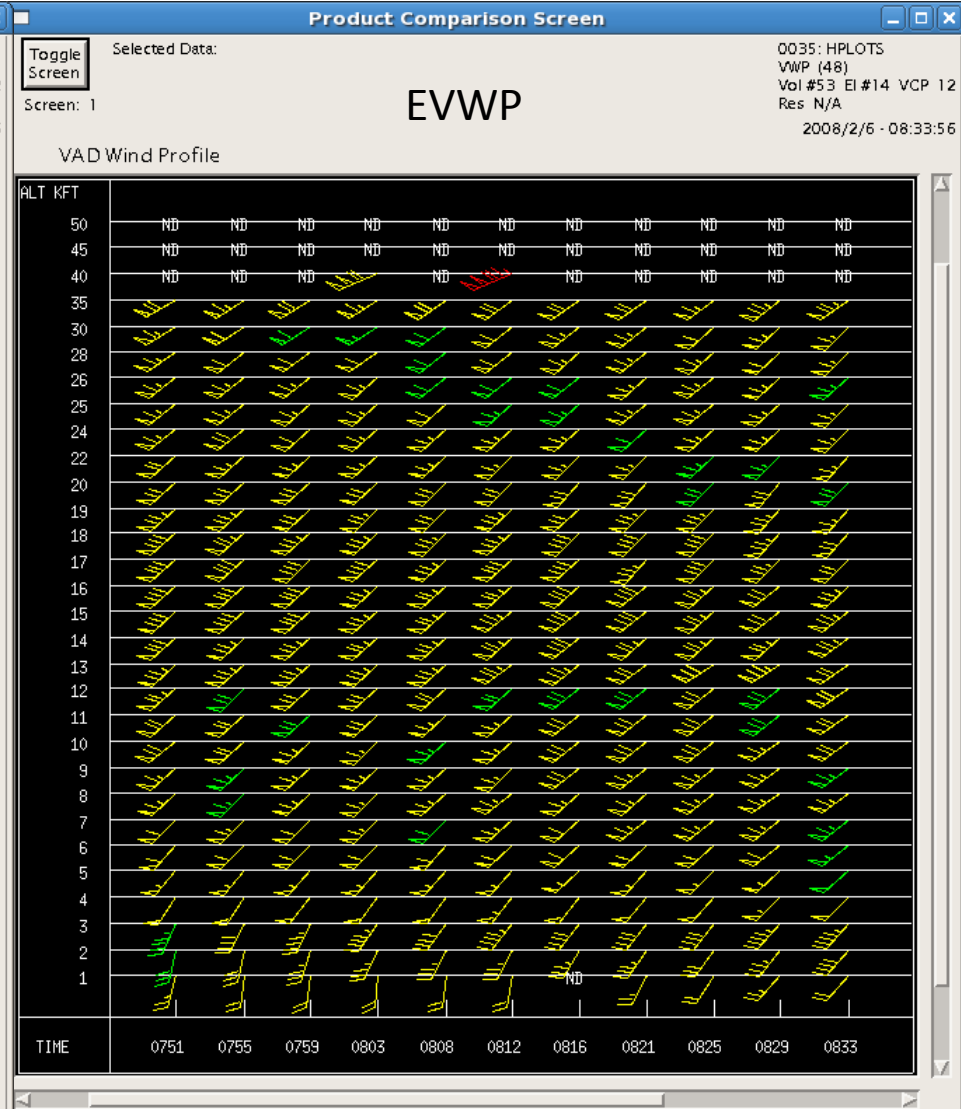
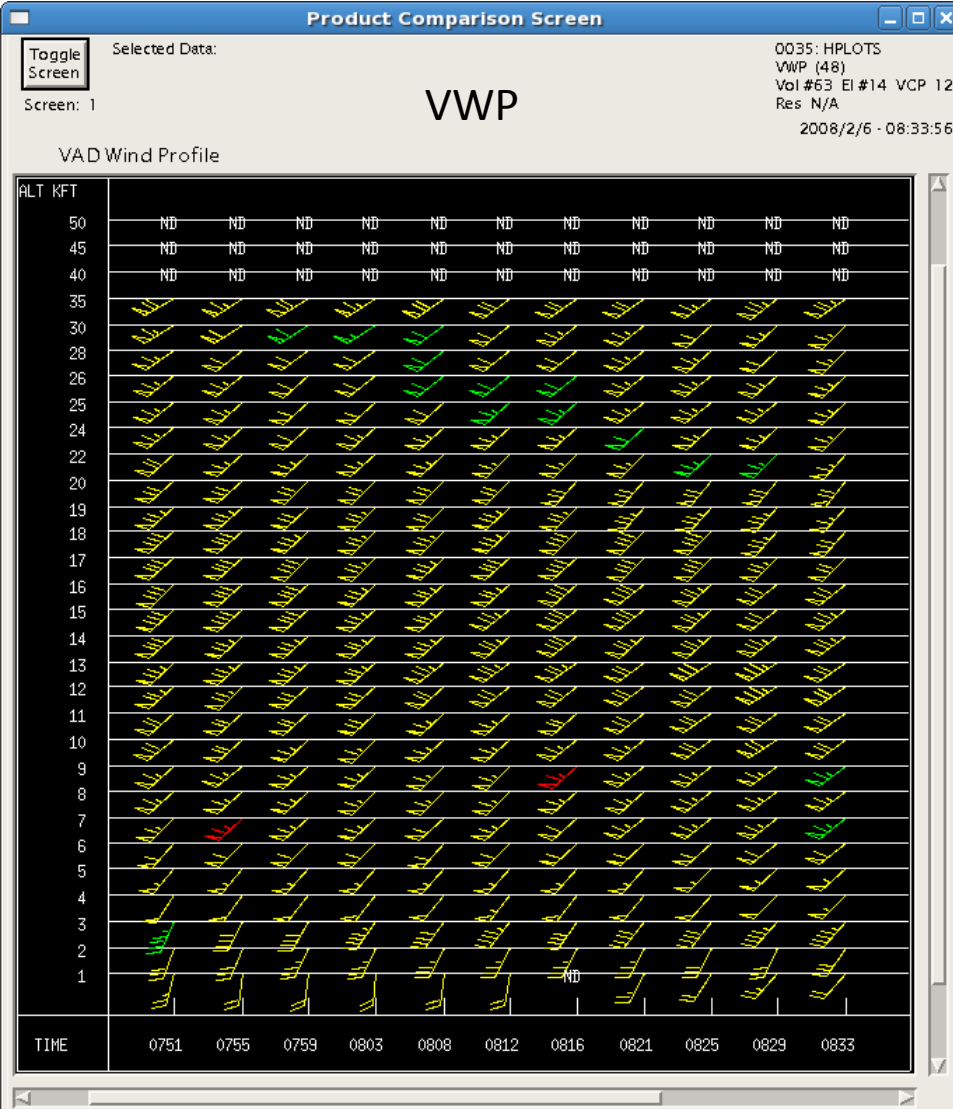


KOHX Feb 6, 2008 07:51Z – 08:33Z

EVWP Provided 0.7% More Wind Estimates than VWP

VWP Total Wind Estimates = 296

EVWP Total Wind Estimates - 298

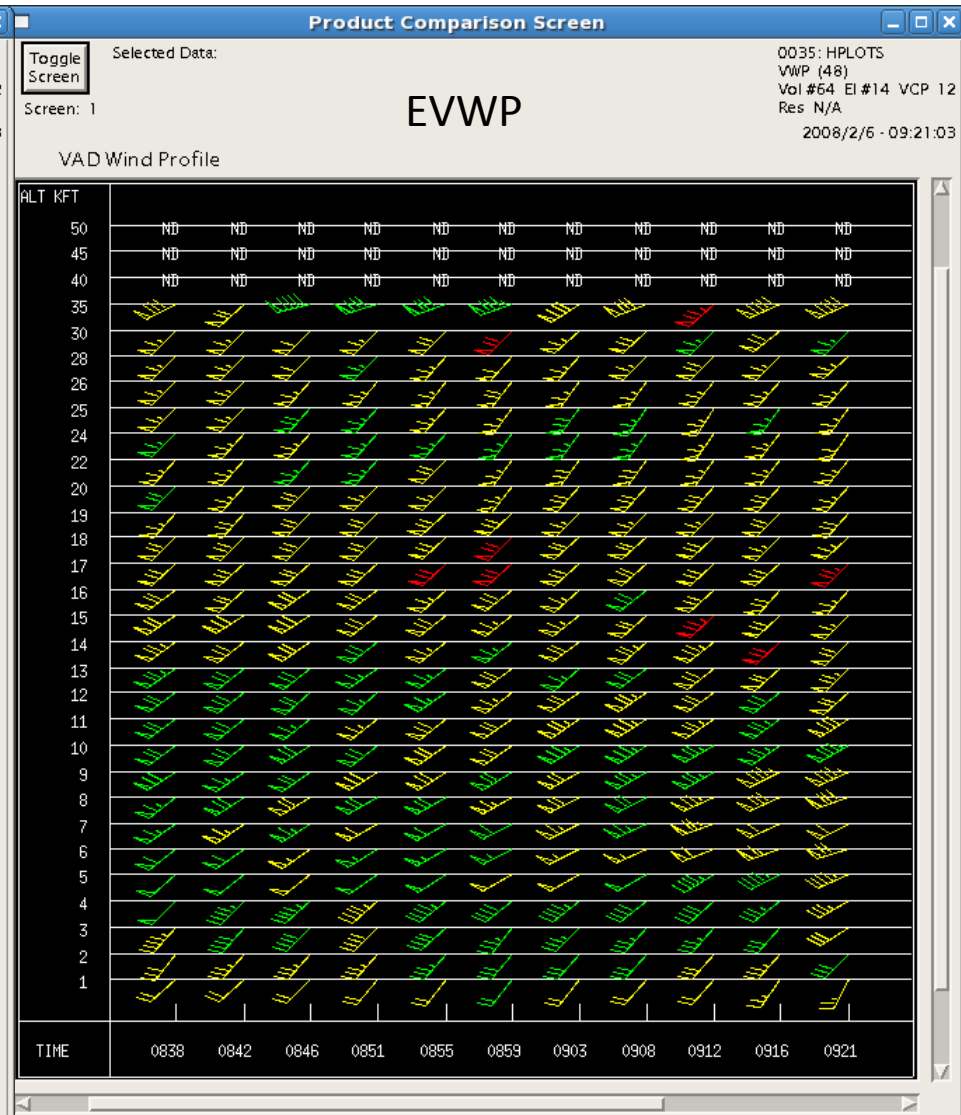
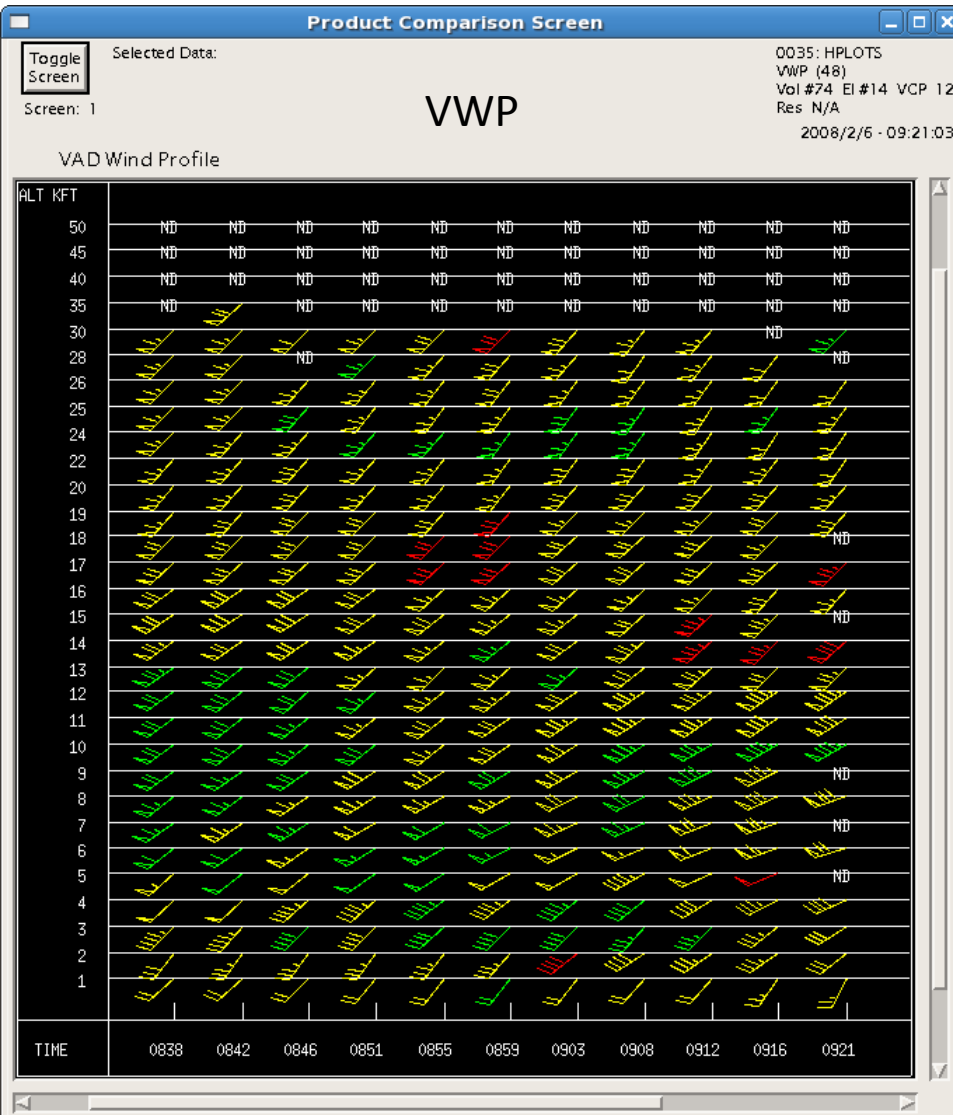


KOHX Feb 6, 2008 08:38Z – 09:21Z

EVWP Provided 6.5% More Wind Estimates than VWP

VWP Total Wind Estimates = 279

EVWP Total Wind Estimates - 297

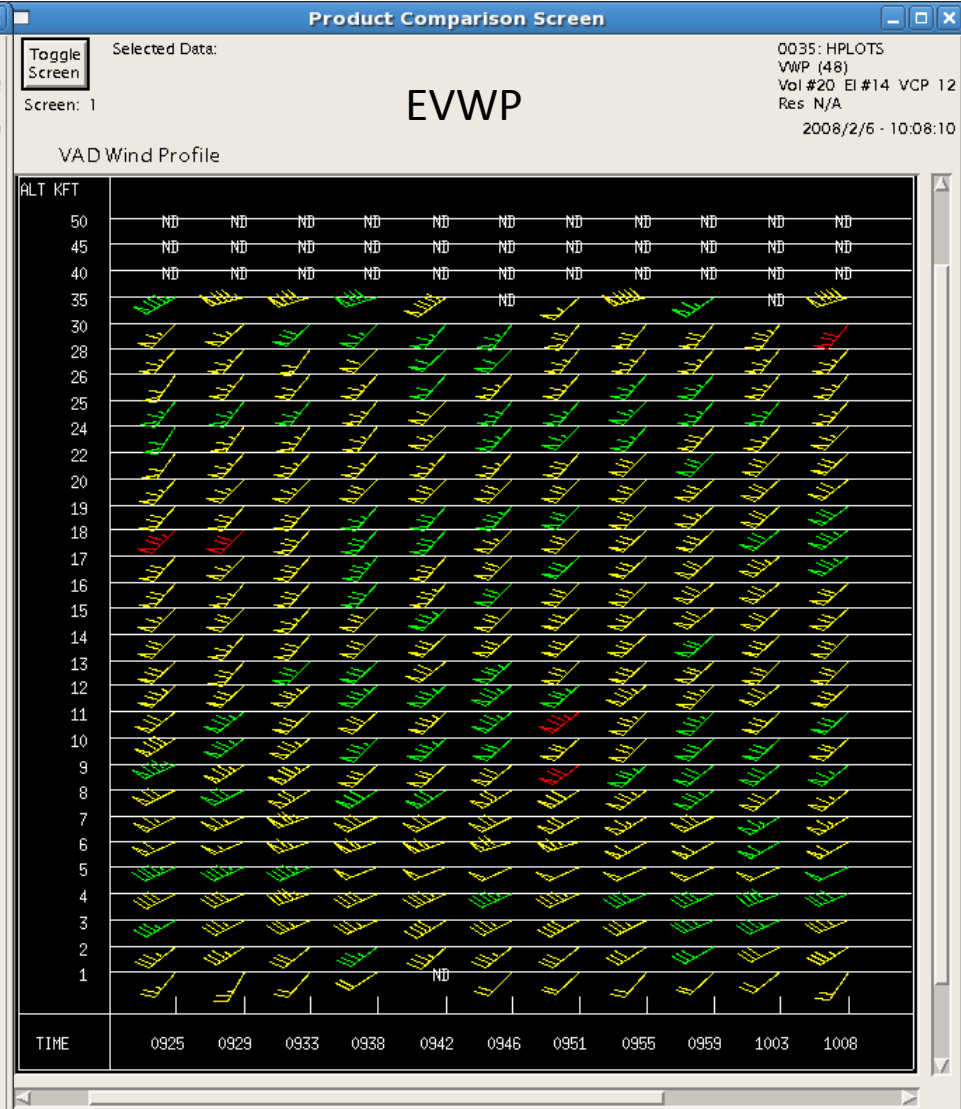
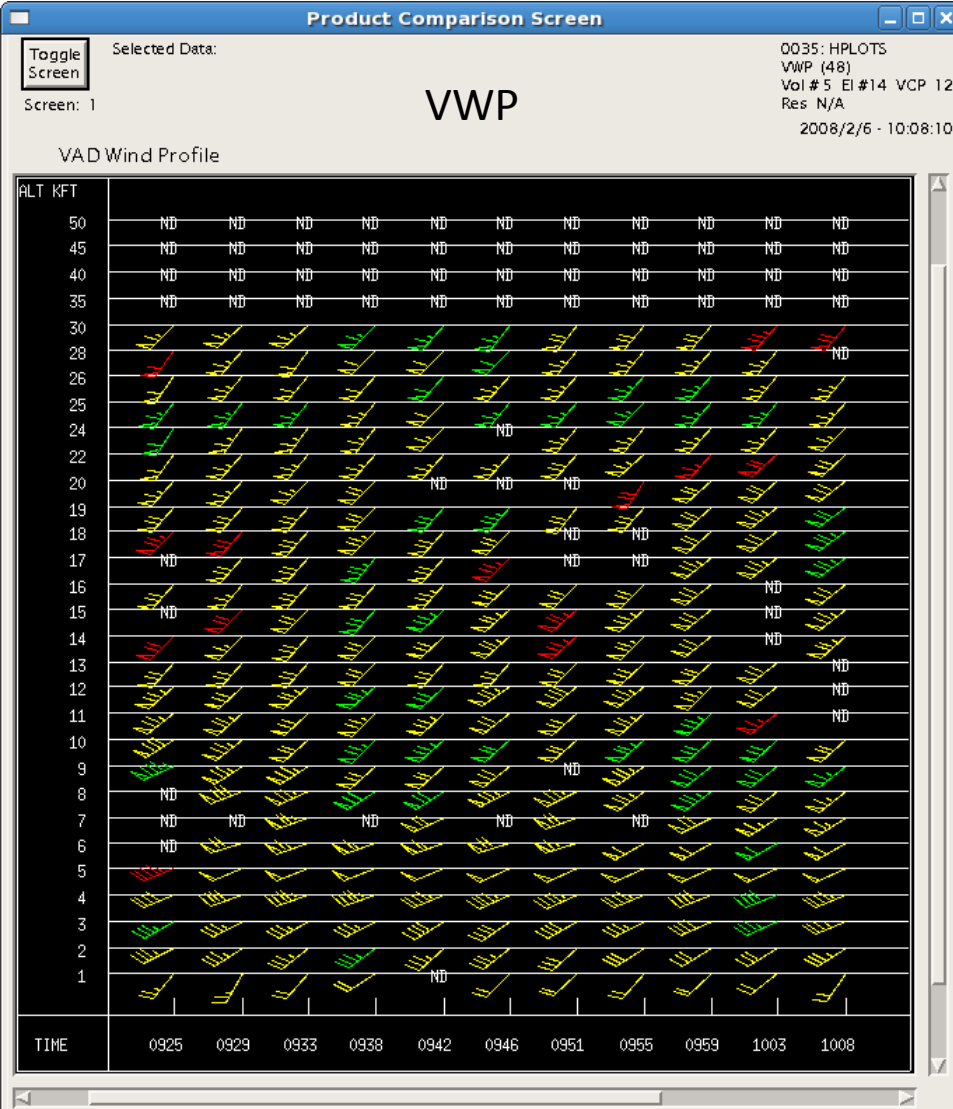


KOHX Feb 6, 2008 09:25Z – 10:08Z

EVWP Provided 13% More Wind Estimates than VWP

VWP Total Wind Estimates = 260

EVWP Total Wind Estimates - 294

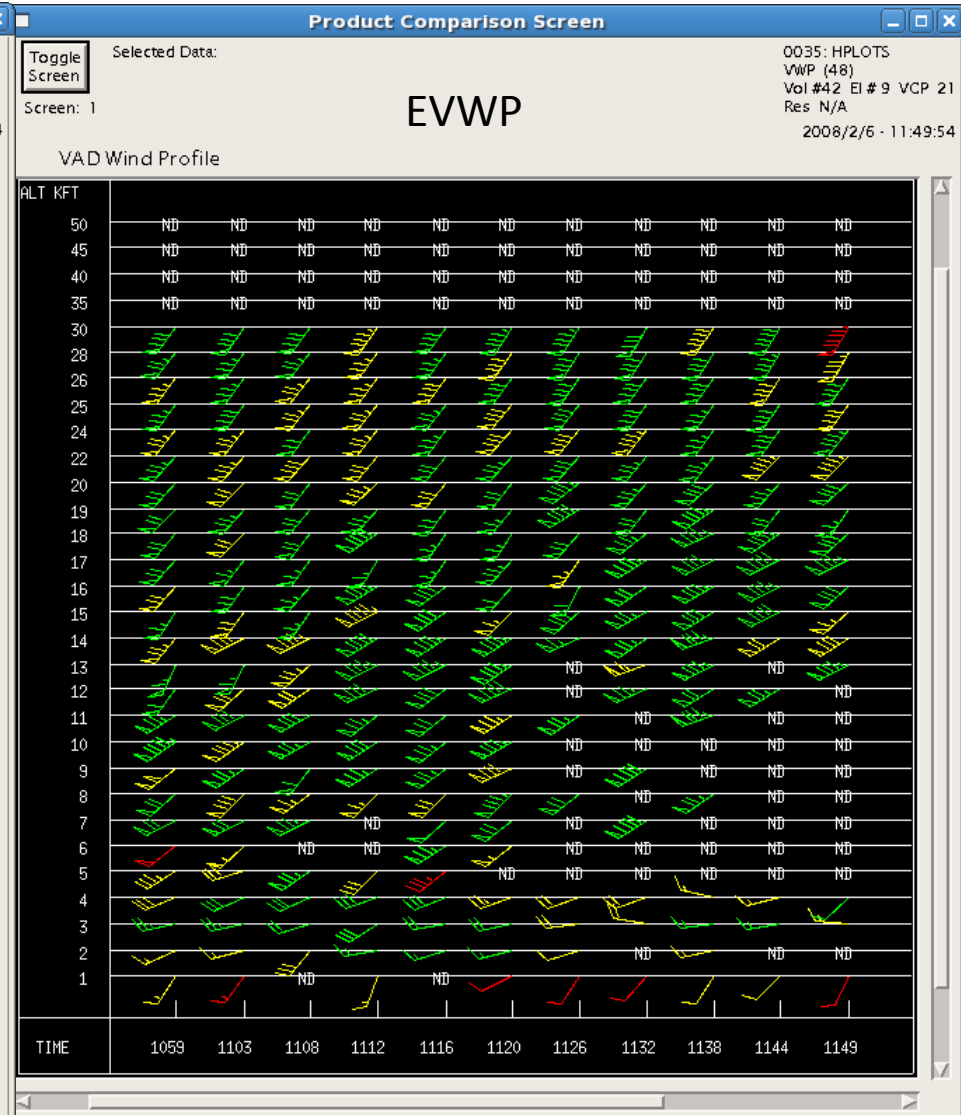
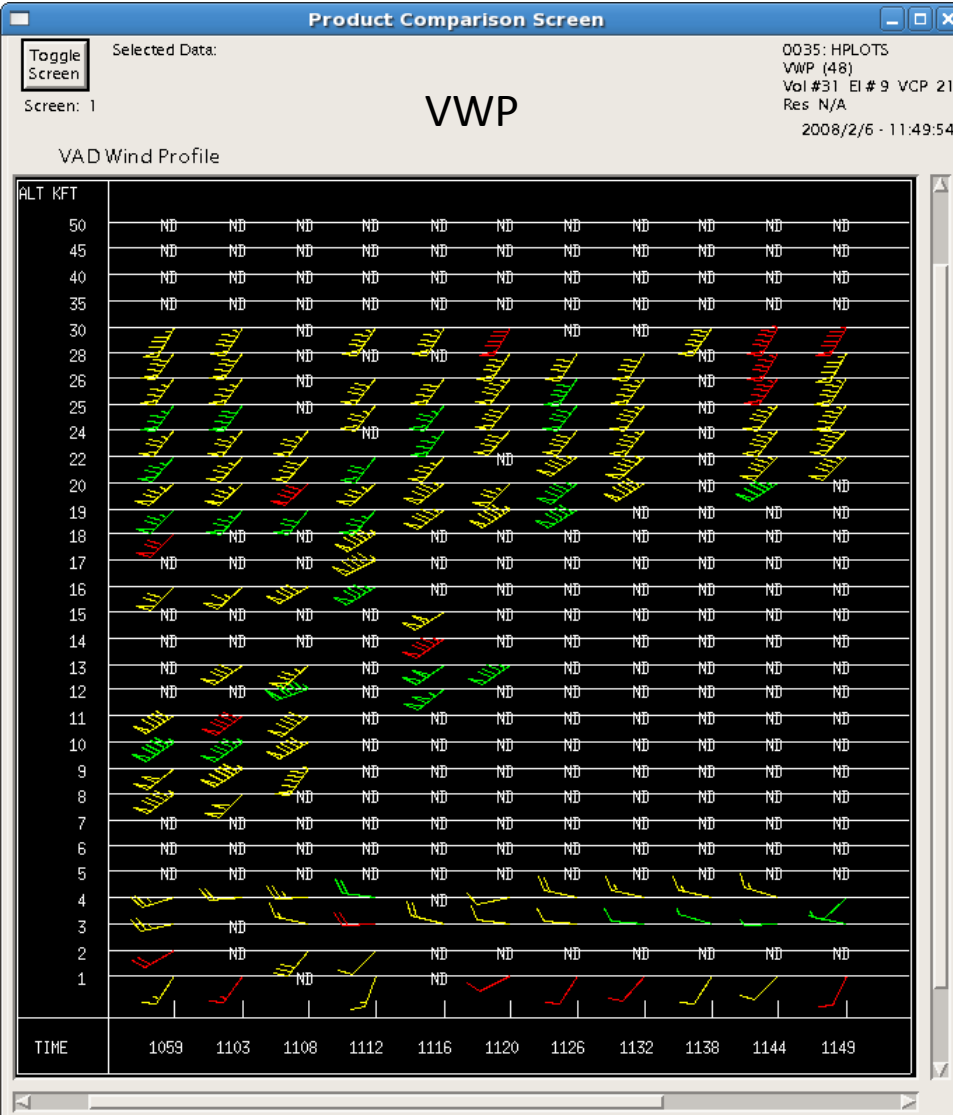


KOHX Feb 6, 2008 10:59Z – 11:49Z

EVWP Provided 95% More Wind Estimates than VWP

VWP Total Wind Estimates = 125

EVWP Total Wind Estimates - 244

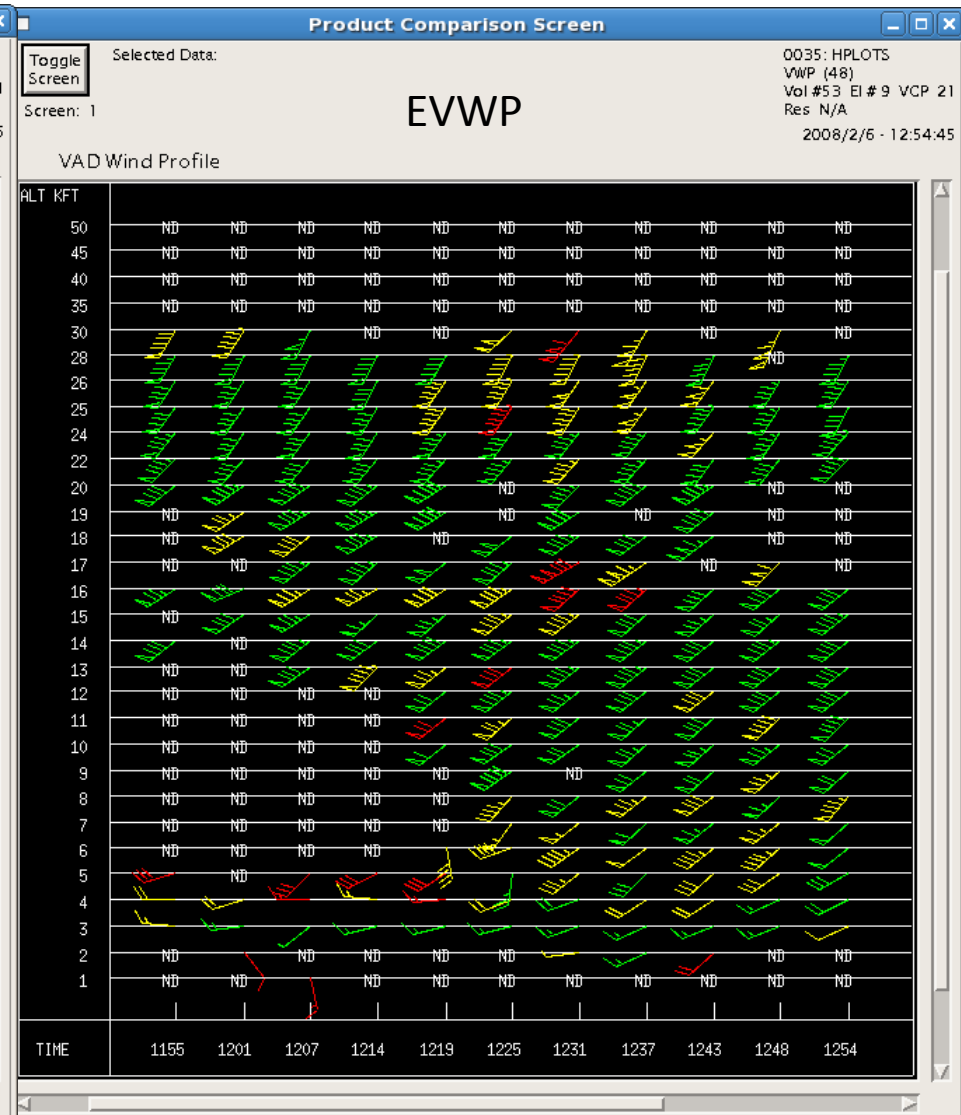
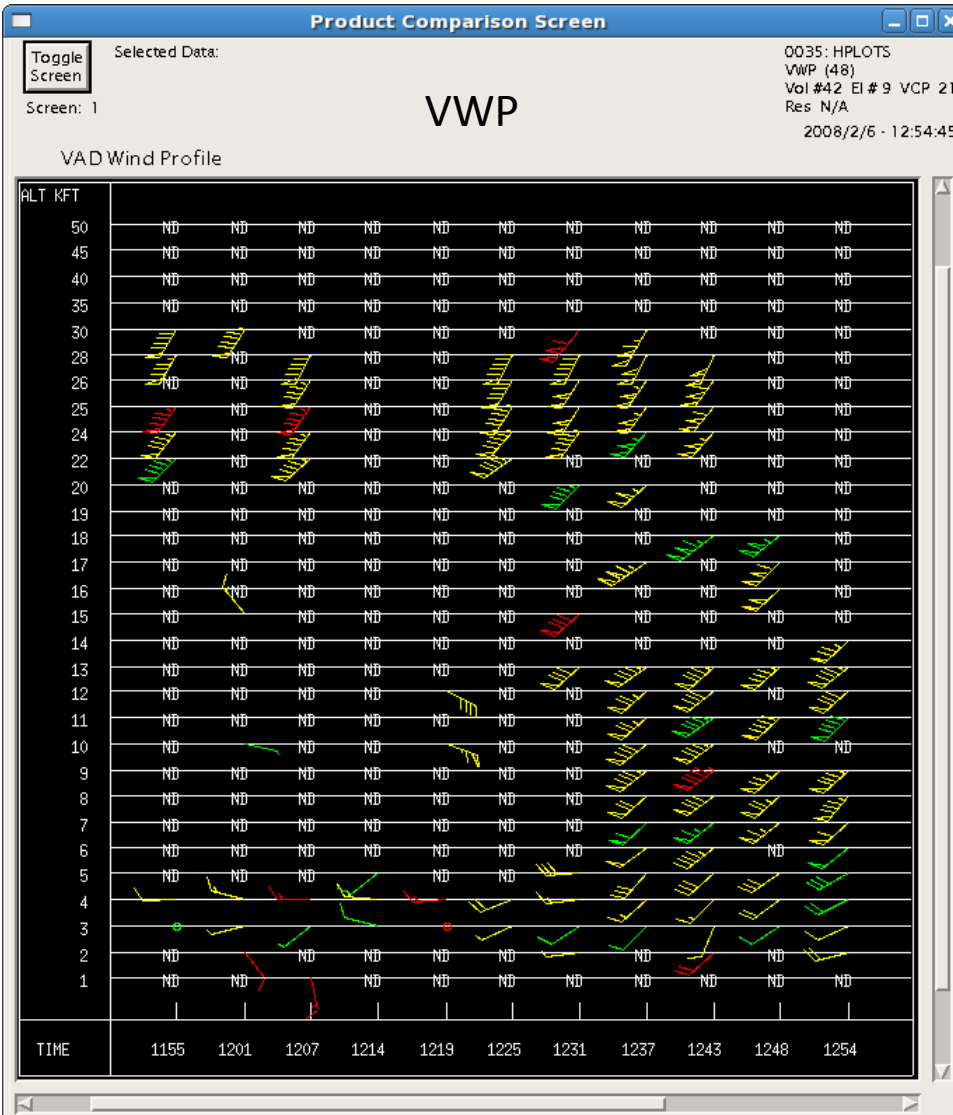


KOHX Feb 6, 2008 01:08Z – 02:07Z

EVWP Provided 83% More Wind Estimates than VWP

VWP Total Wind Estimates = 201

EVWP Total Wind Estimates - 251



Nashville TN (KOHX)

Feb 6, 2008 00:10Z through 12:54Z

Squall Line, Heavy Rain, Small Hail

VWP – EVWP Comparison Event Summary

Total Number of Volume Scans.....152

VWP Total Number of Wind Estimates.....3110

EVWP Total Number of Wind Estimates.....3881

EVWP Provided 24.8% More Wind Estimates than VWP