

# VWP – EVWP Comparison

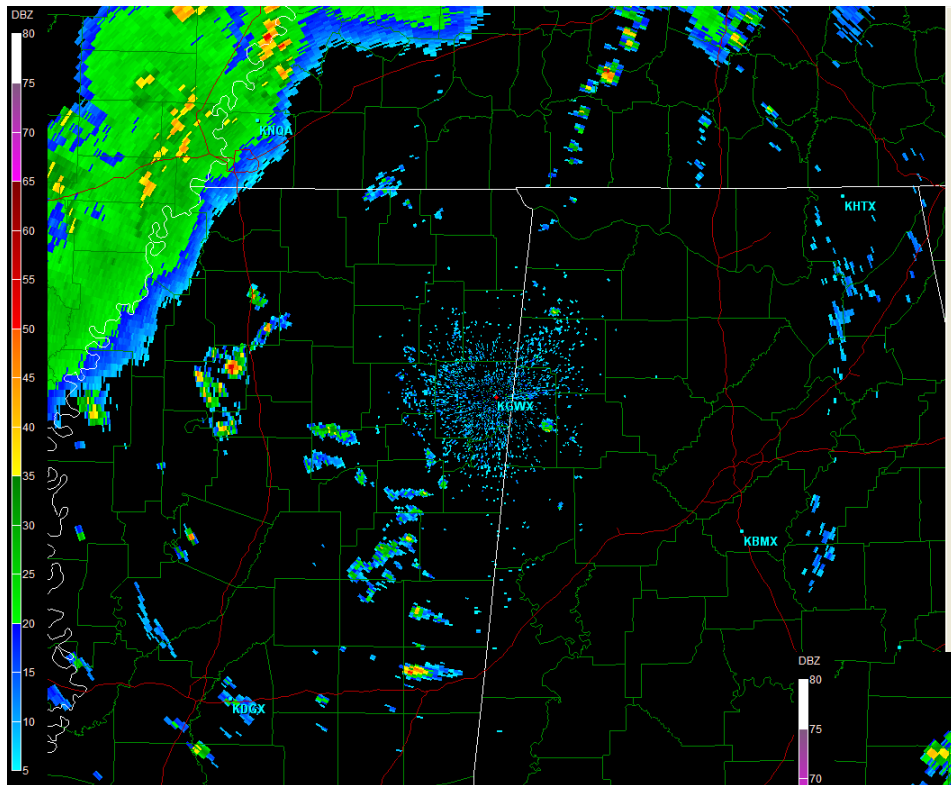
Columbus MS

KGWX

Severe Storms / Squall Line  
Convective Event

May 2 18:05Z through May 3 15:57Z

2008



Site: KGWX  
 VST: 05/02/2008 18:05:01 UTC  
 Prod: 05/02/2008 18:05:01 UTC  
 VCP: 212  
 Tilt: 0.483°

Select Sweep:  
 Base Reflectivity  
 Base Velocity  
 Storm Relative  
 Spectrum Width

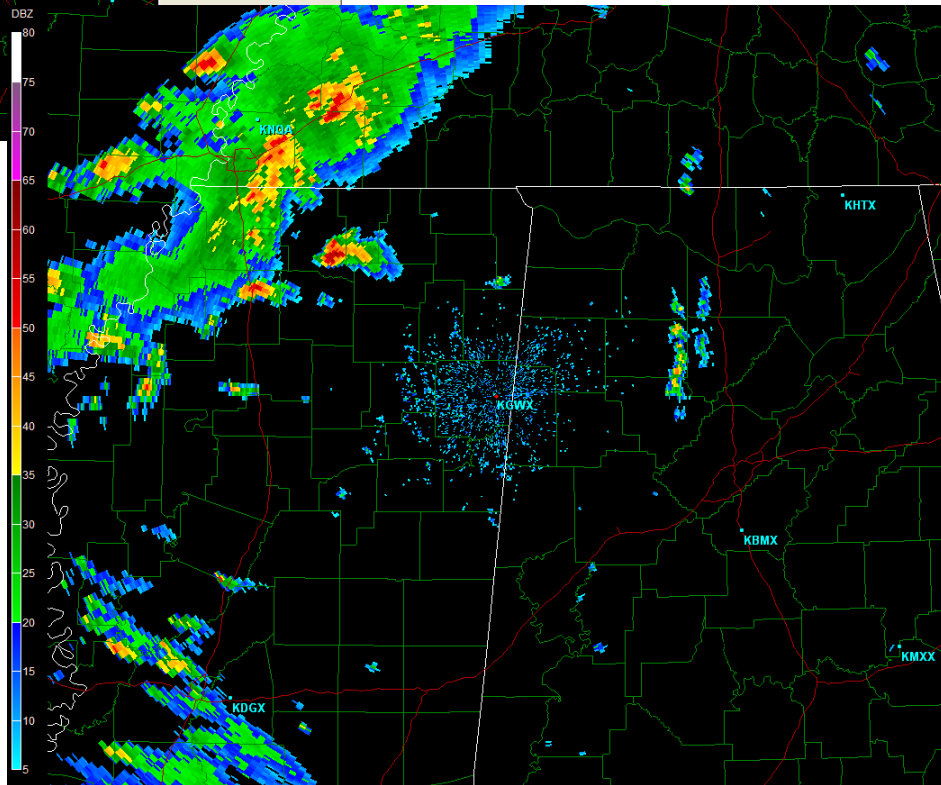
Select Tilt:  

0.5°	0.9°	1.3°	1.8°
2.4°	3.1°	4.0°	5.1°
6.4°	8.0°	10.0°	12.5°
15.6°	19.5°		

Warnings:  
 Flash Flood - 0  
 Thunderstorm - 0  
 Tornado - 0

Smoothing  
 Dealias

**KGWX**  
**0.5° Reflectivity**  
**18:05Z**



Site: KGWX  
 VST: 05/02/2008 19:45:44 UTC  
 Prod: 05/02/2008 19:45:43 UTC  
 VCP: 212  
 Tilt: 0.483°

Select Sweep:  
 Base Reflectivity  
 Base Velocity  
 Storm Relative  
 Spectrum Width

Select Tilt:  

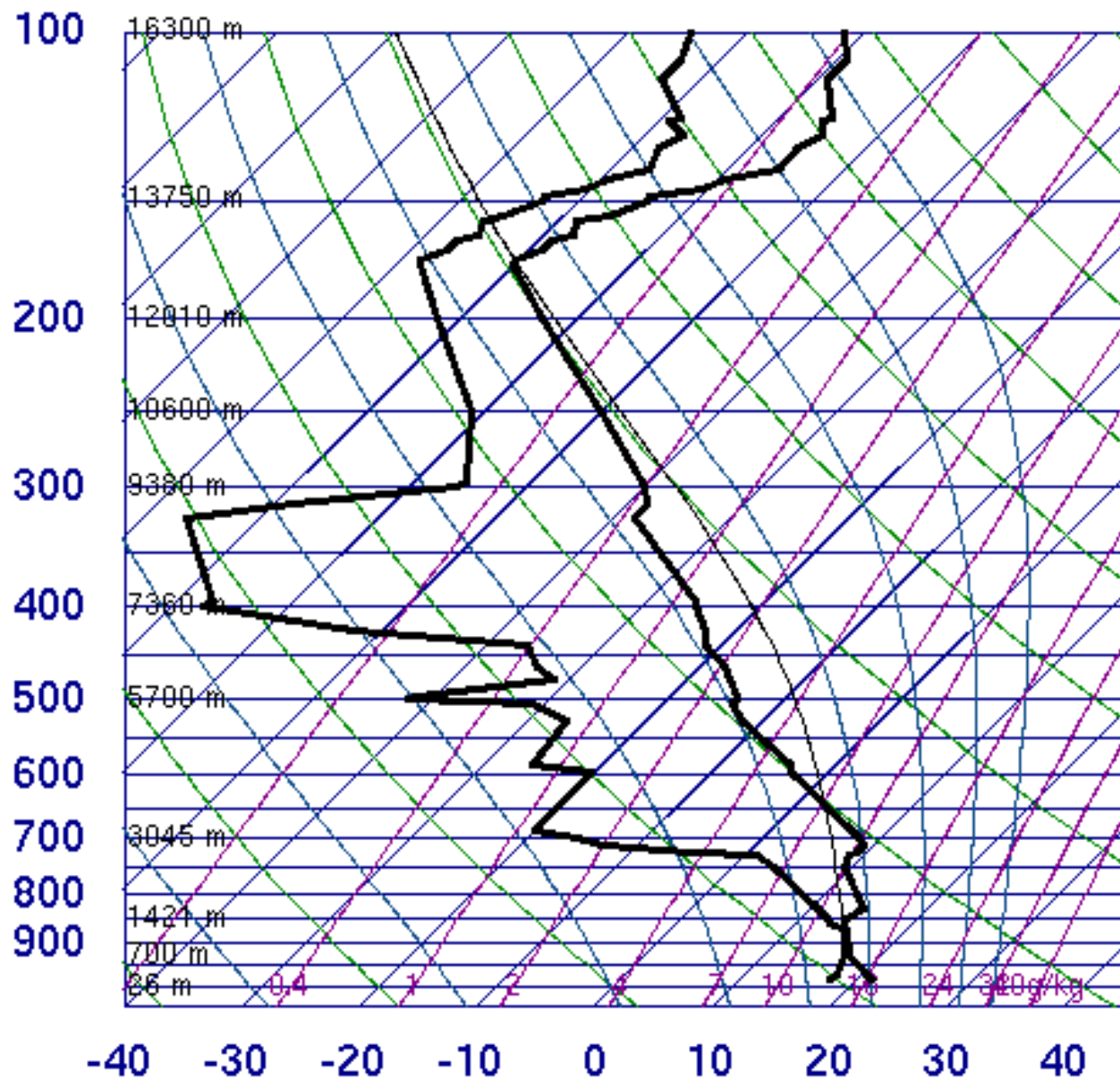
0.5°	0.9°	1.3°	1.8°
2.4°	3.1°	4.0°	5.1°
6.4°	8.0°	10.0°	12.5°
15.6°	19.5°		

Warnings:  
 Flash Flood - 0  
 Thunderstorm - 0  
 Tornado - 0

Smoothing  
 Dealias

**KGWX**  
**0.5° Reflectivity**  
**19:45Z**

# 72340 LZK North Little Rock



SLAT	34.83
SLON	-92.27
SELV	172.0
SHOW	-4.02
LIFT	-5.01
LFTV	-5.60
SWET	482.5
KINX	16.50
CTOT	26.50
VTOT	28.10
TOTL	54.60
CAPE	1171.
CAPV	1271.
CINS	-119.
CINV	-8.08
EQLV	173.2
EQTV	173.2
LFCT	645.5
LFCV	856.8
BRCH	9.56
BRCV	10.39
LCLT	290.1
LCLP	928.6
MLTH	296.3
MLMR	13.30
THCK	5674.
PWAT	30.86

12Z 02 May 2008

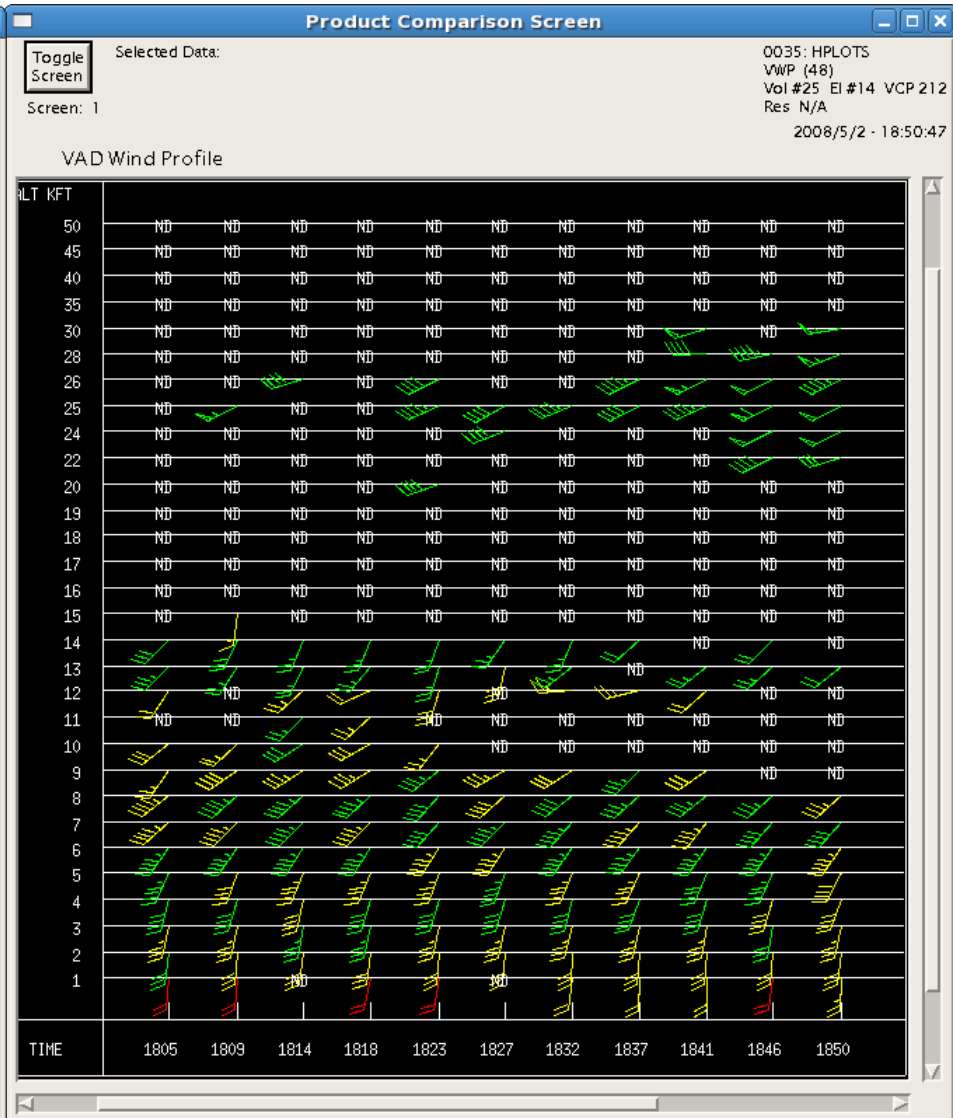
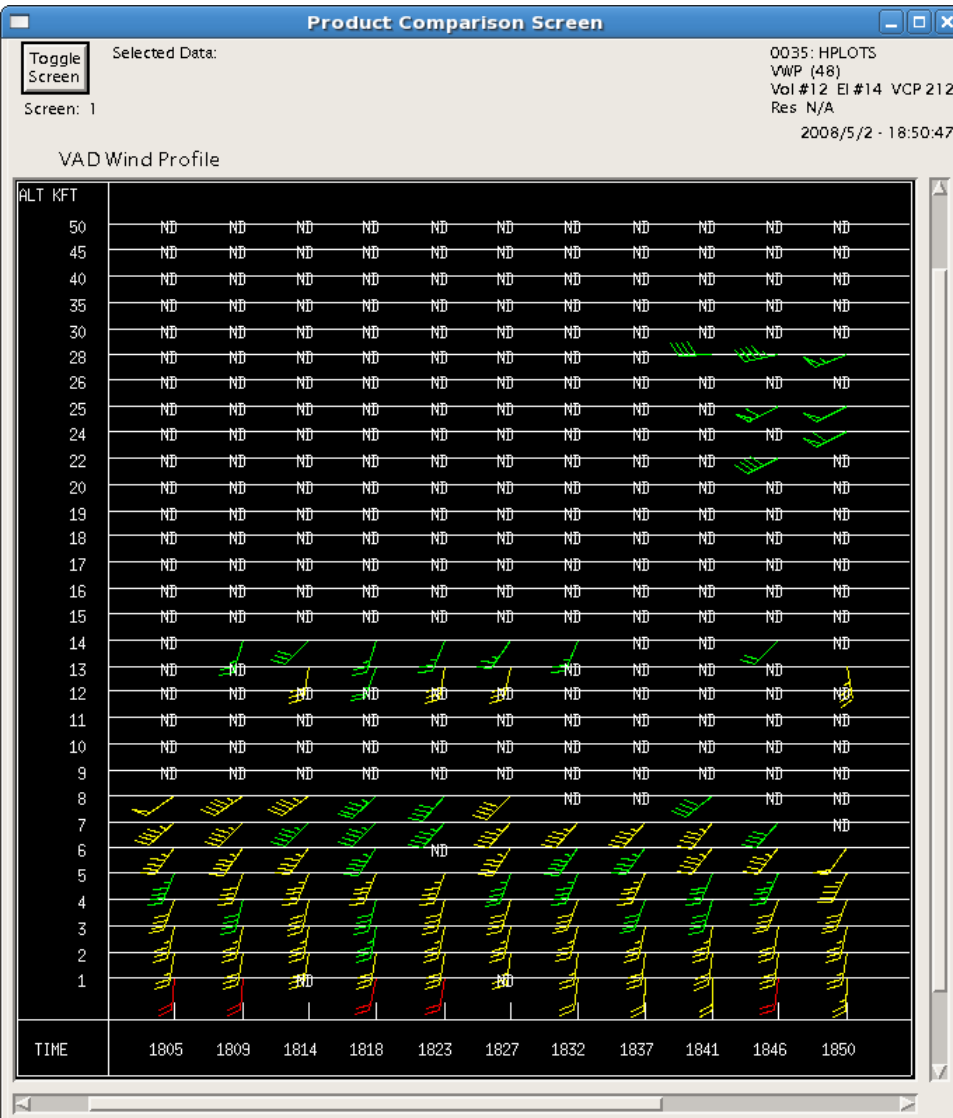
University of Wyoming

# KGWX May 2, 2008 18:05Z – 18:50Z

## EVWP Provided 55% More Wind Estimates than VWP

VWP Total Wind Estimates = 100

EVWP Total Wind Estimates - 155

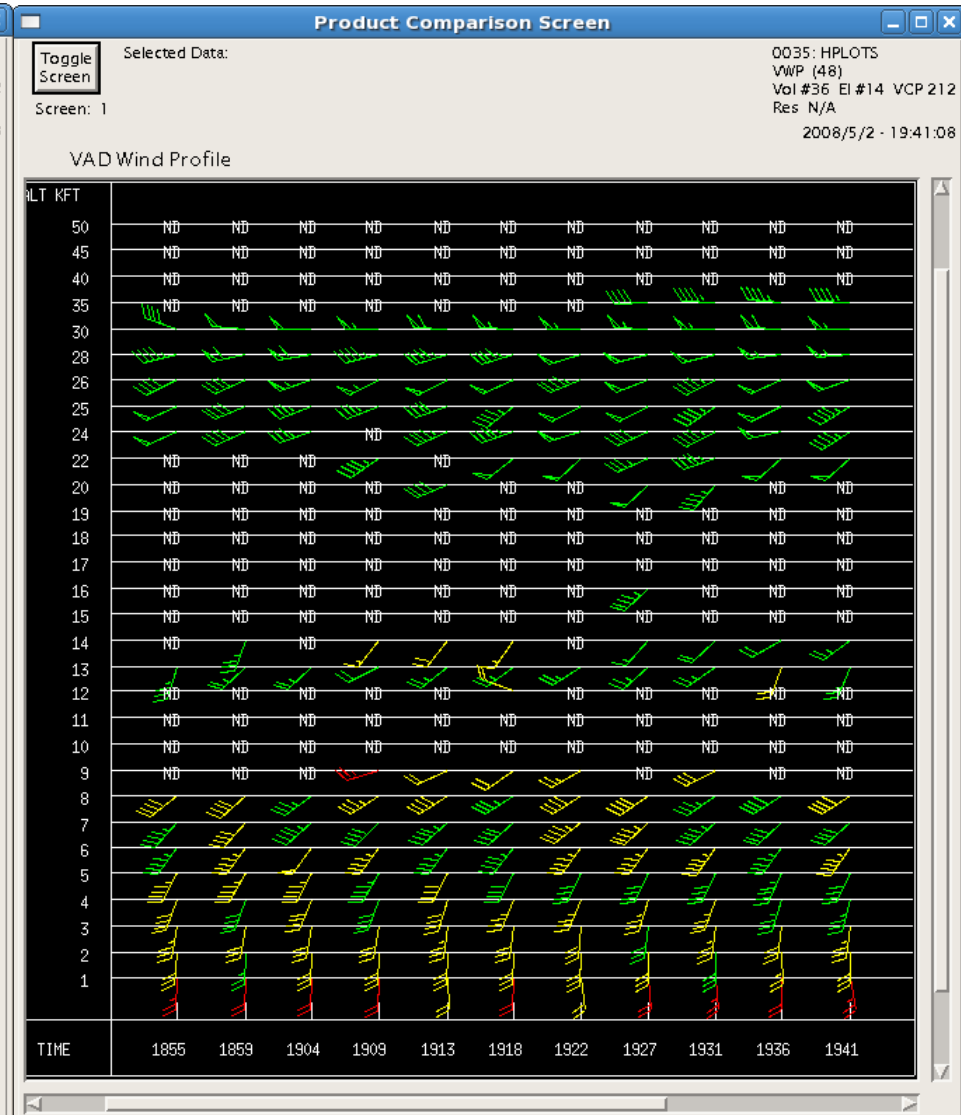
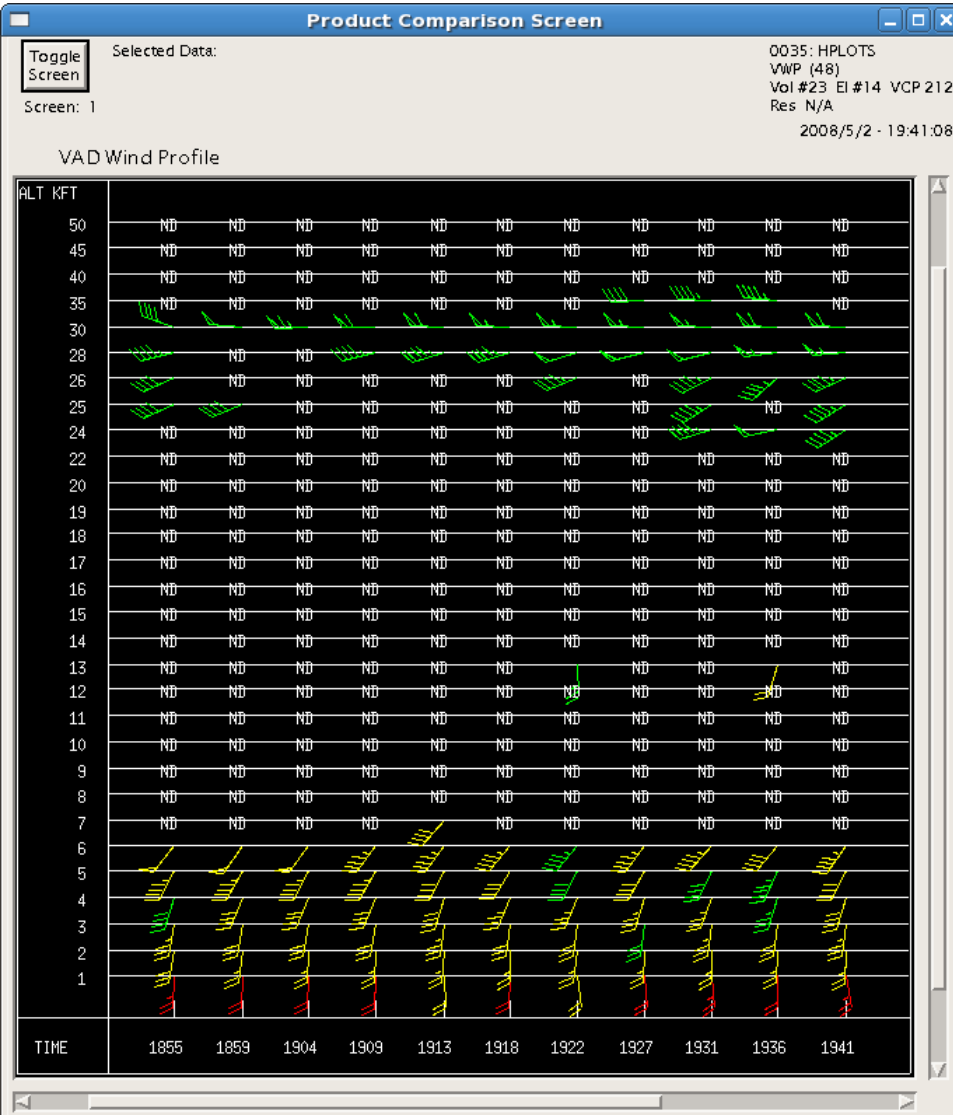


# KGWX May 2, 2008 18:55Z – 19:41Z

EVWP Provided 75% More Wind Estimates than VWP

VWP Total Wind Estimates = 104

EVWP Total Wind Estimates - 182

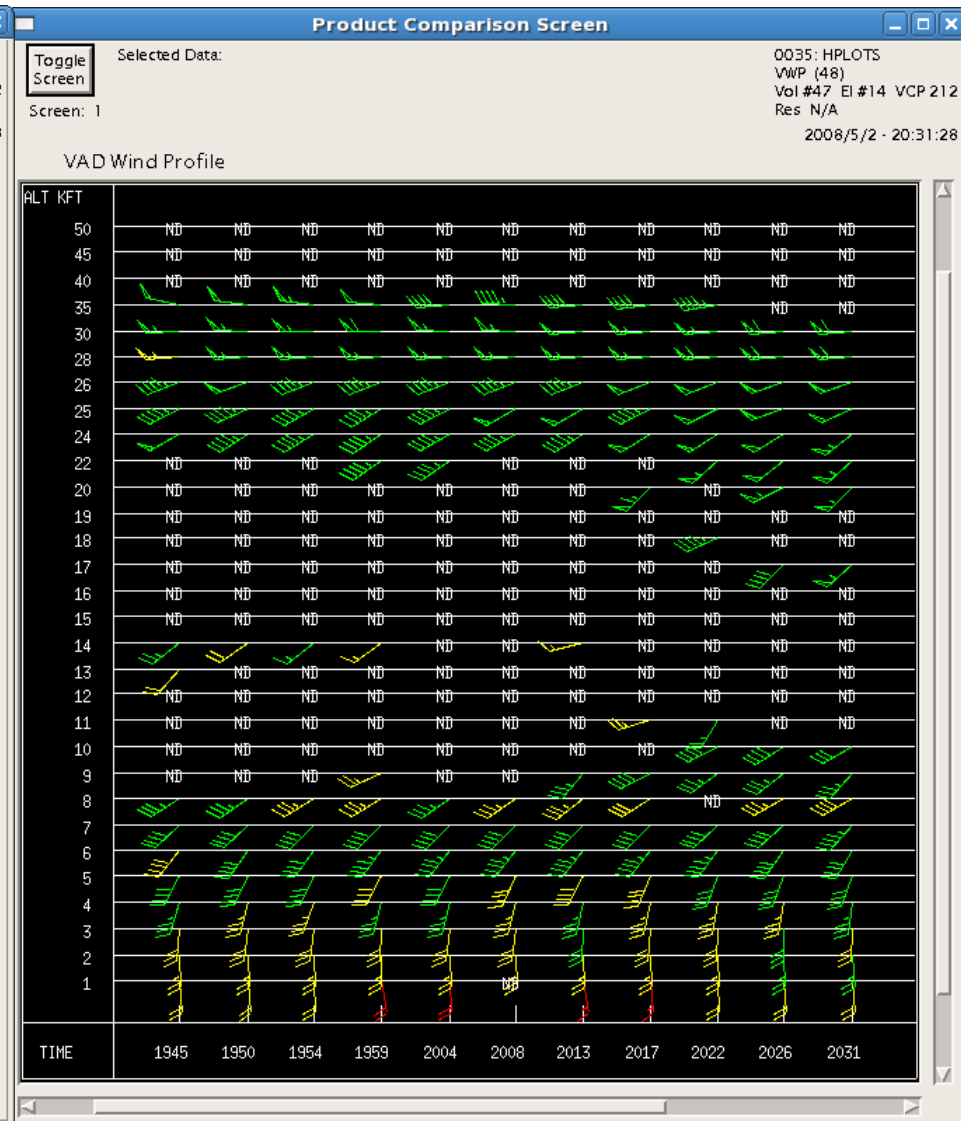
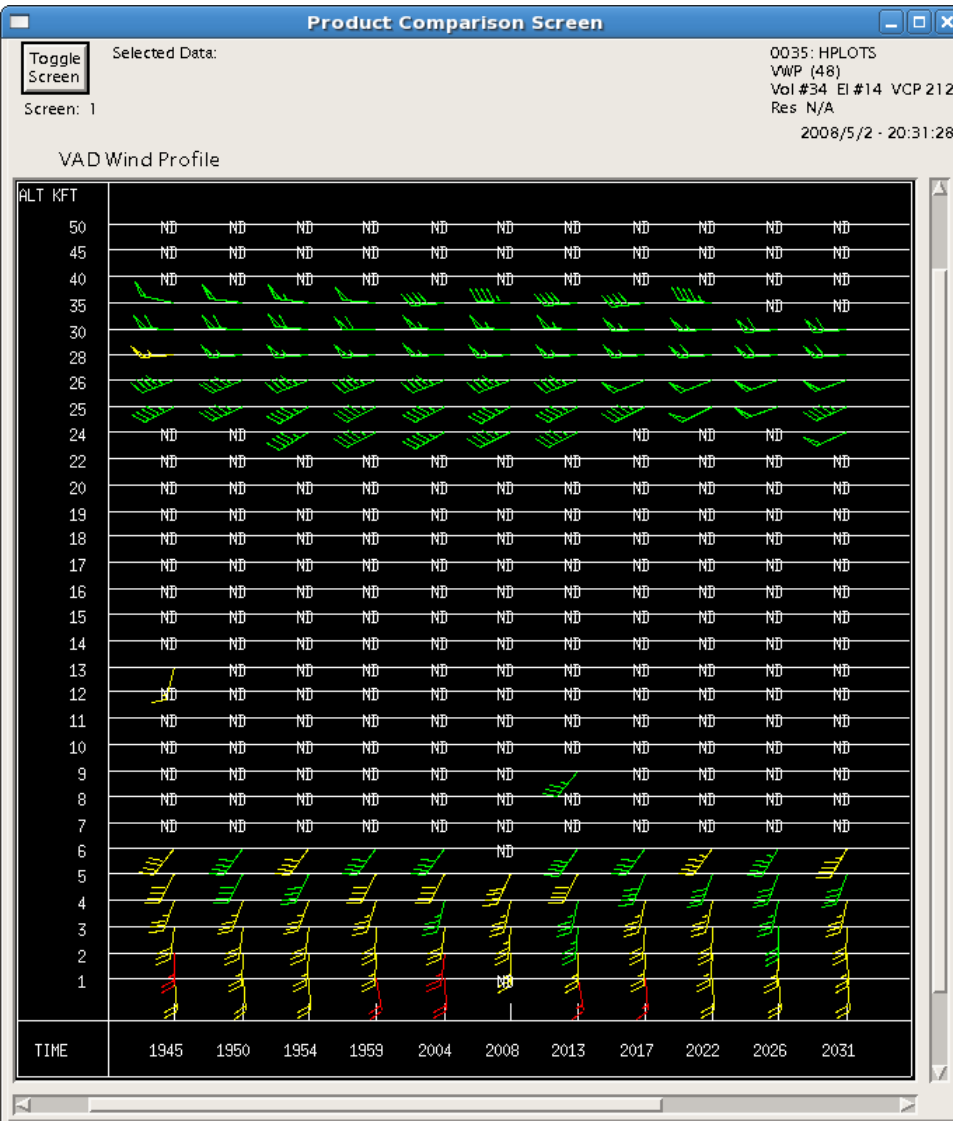


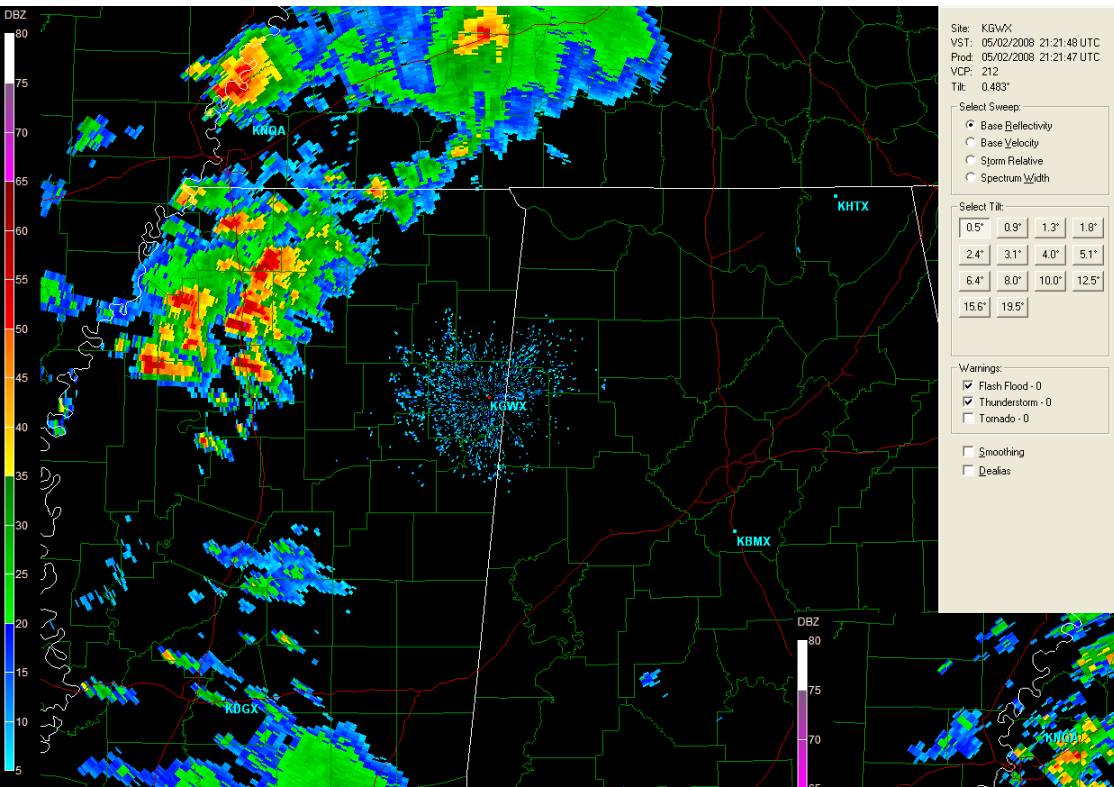
# KGWX May 2, 2008 19:45Z – 20:31Z

EVWP Provided 42% More Wind Estimates than VWP

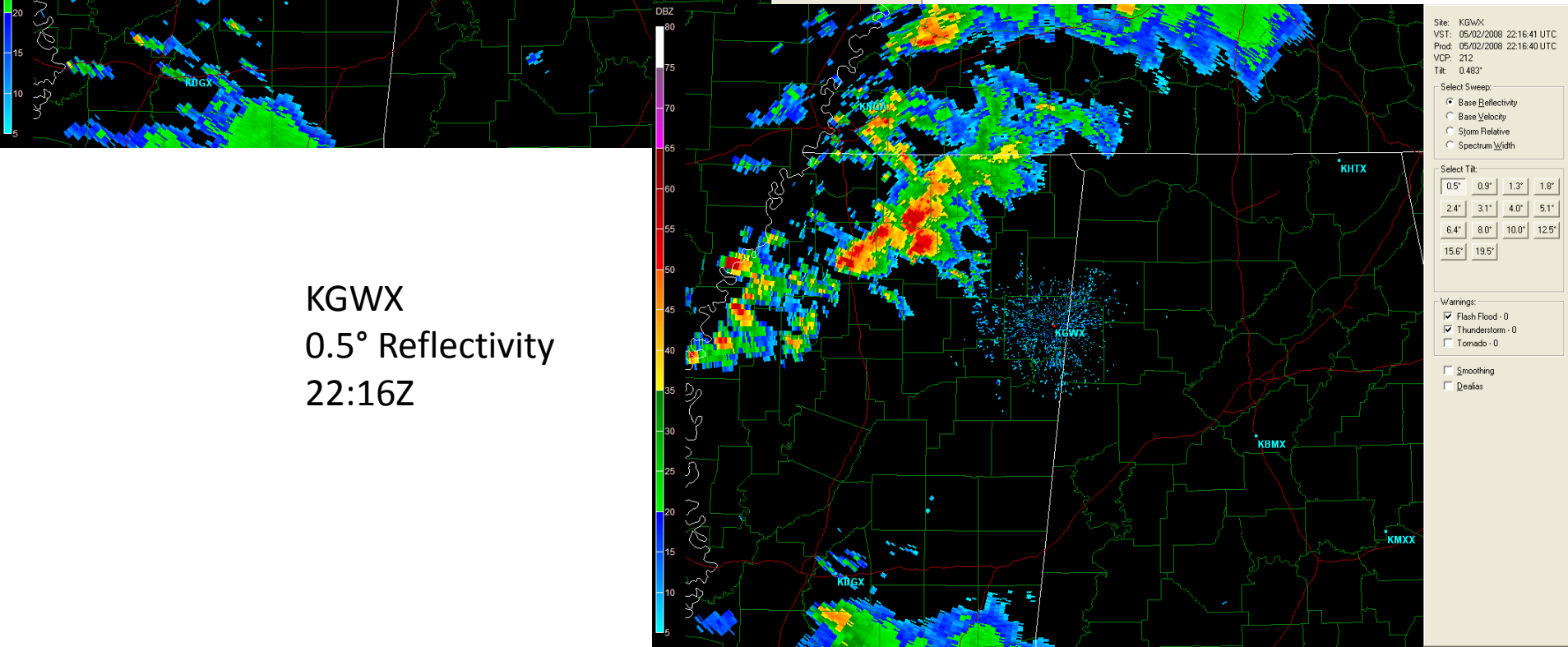
VWP Total Wind Estimates = 126

EVWP Total Wind Estimates - 179





KGWX  
 0.5° Reflectivity  
 21:21Z



KGWX  
 0.5° Reflectivity  
 22:16Z

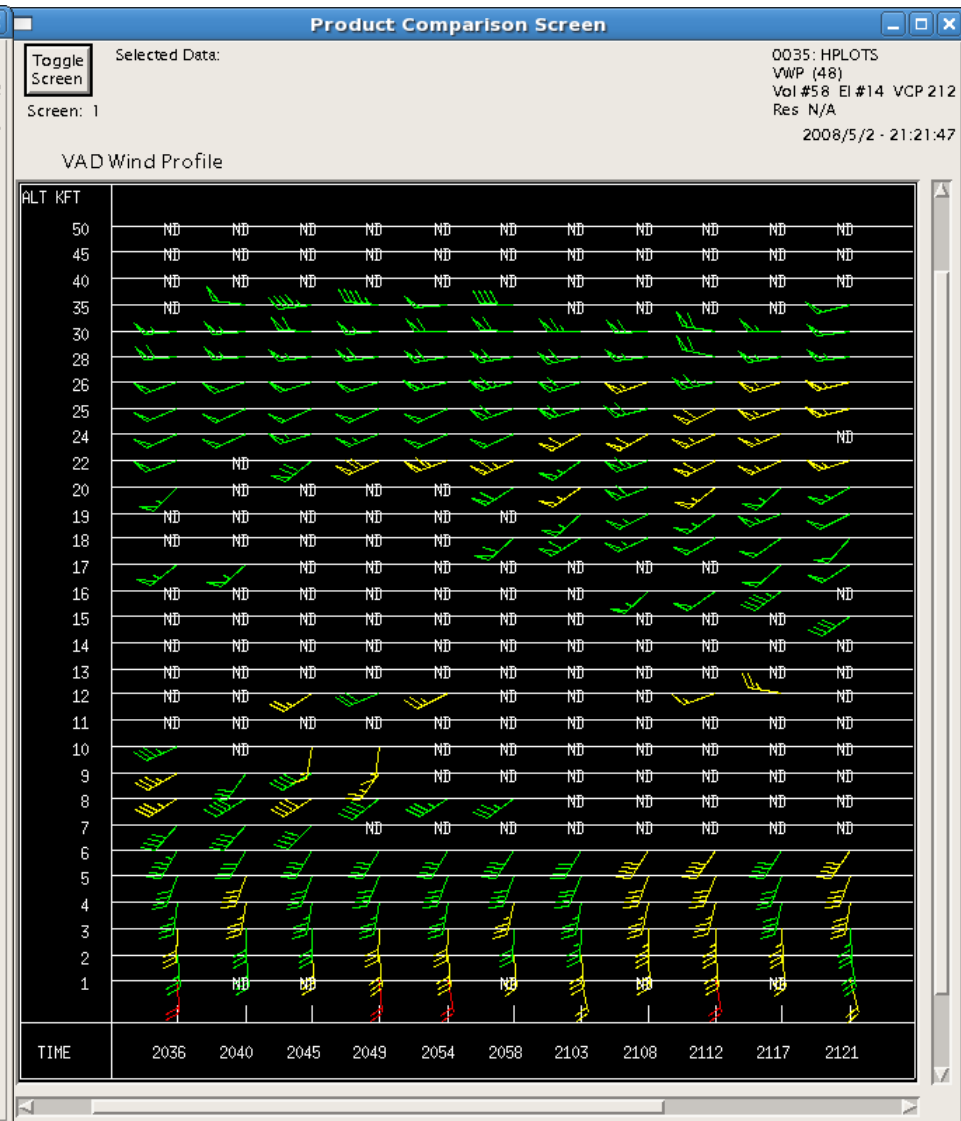
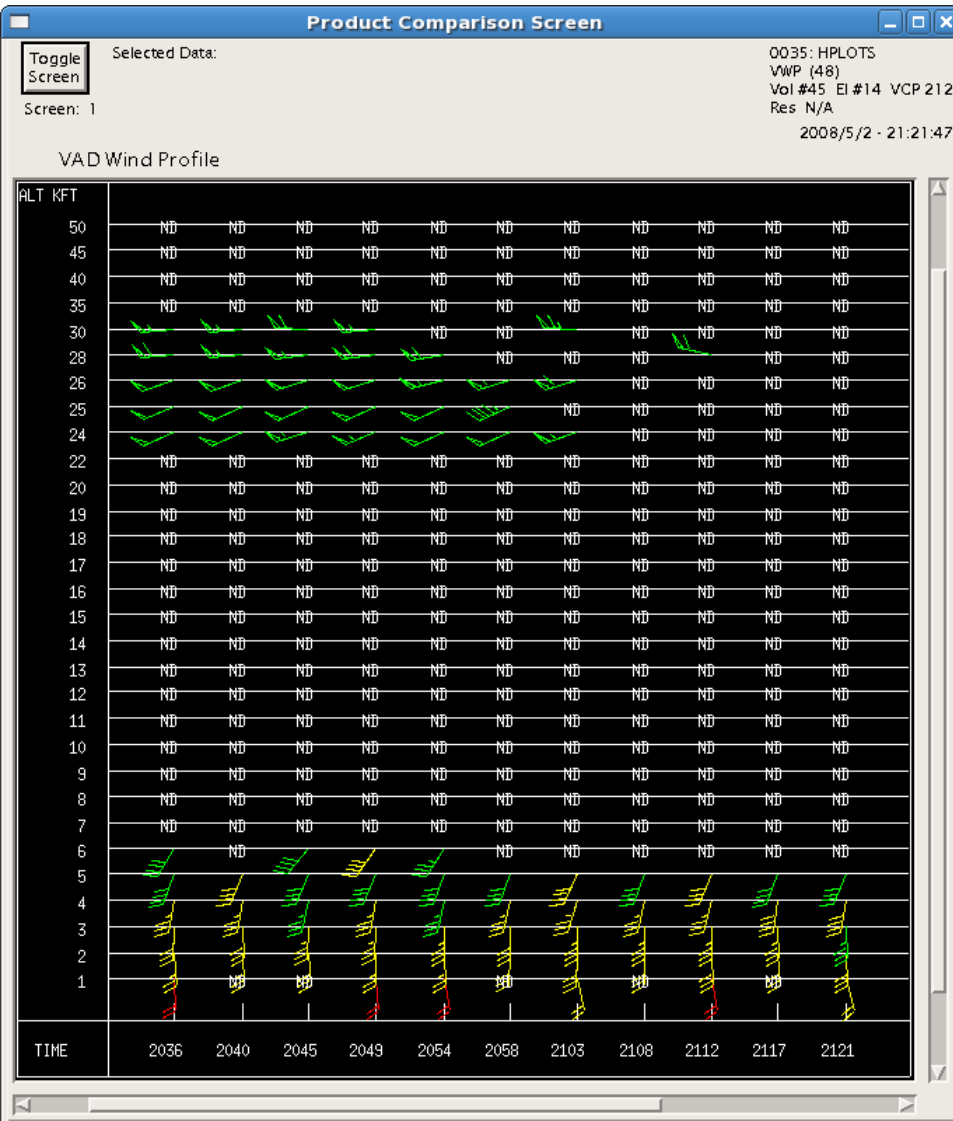


# KGWX May 2, 2008 20:36Z – 21:21Z

EVWP Provided 109% More Wind Estimates than VWP

VWP Total Wind Estimates = 85

EVWP Total Wind Estimates - 178



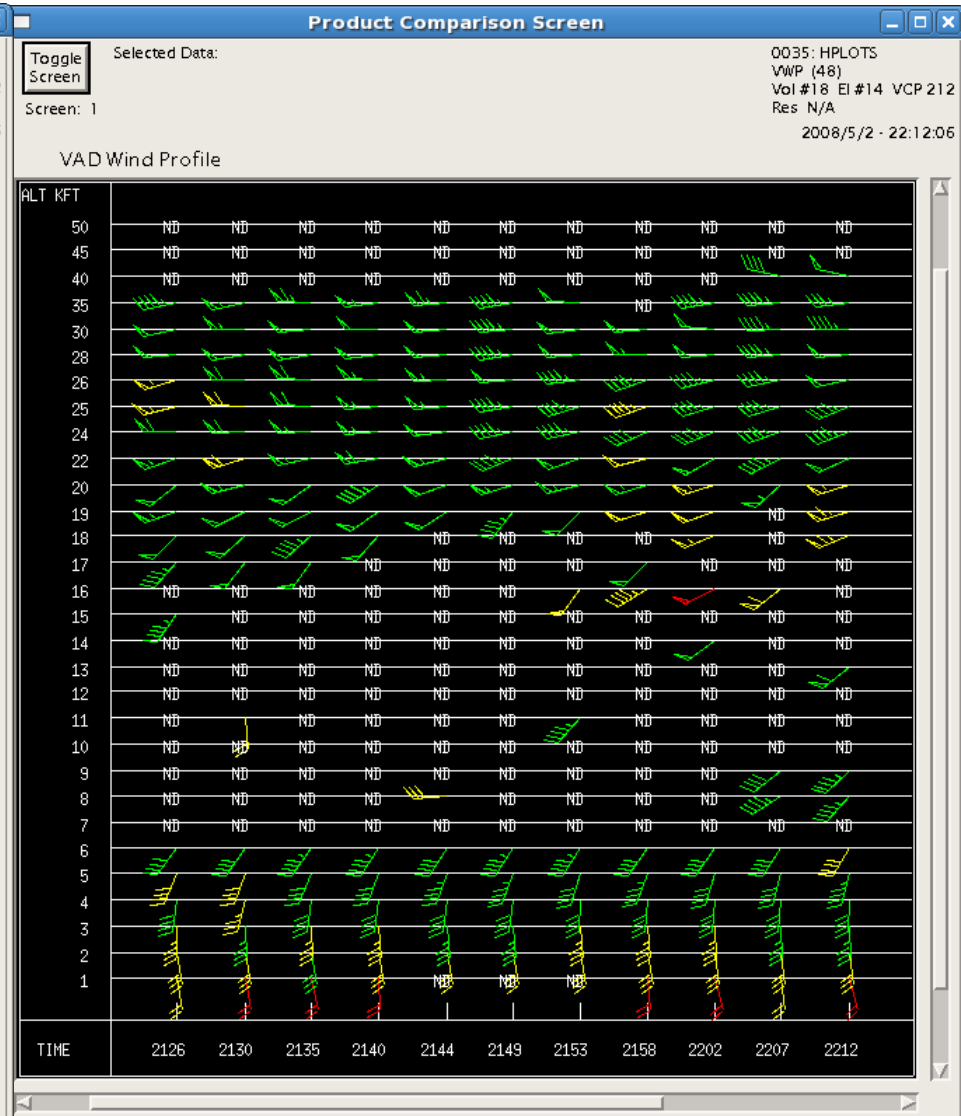
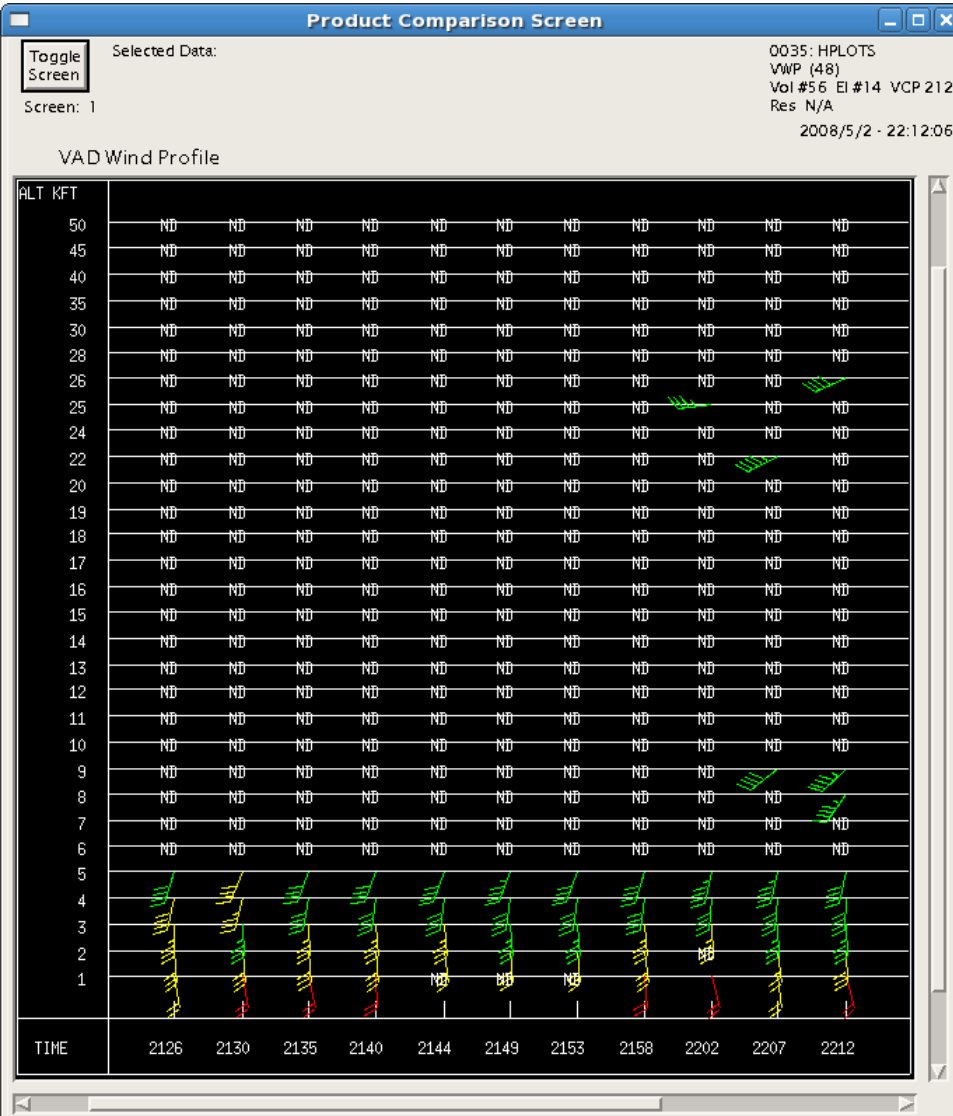


# KGWX May 2, 2008 21:26Z – 22:12Z

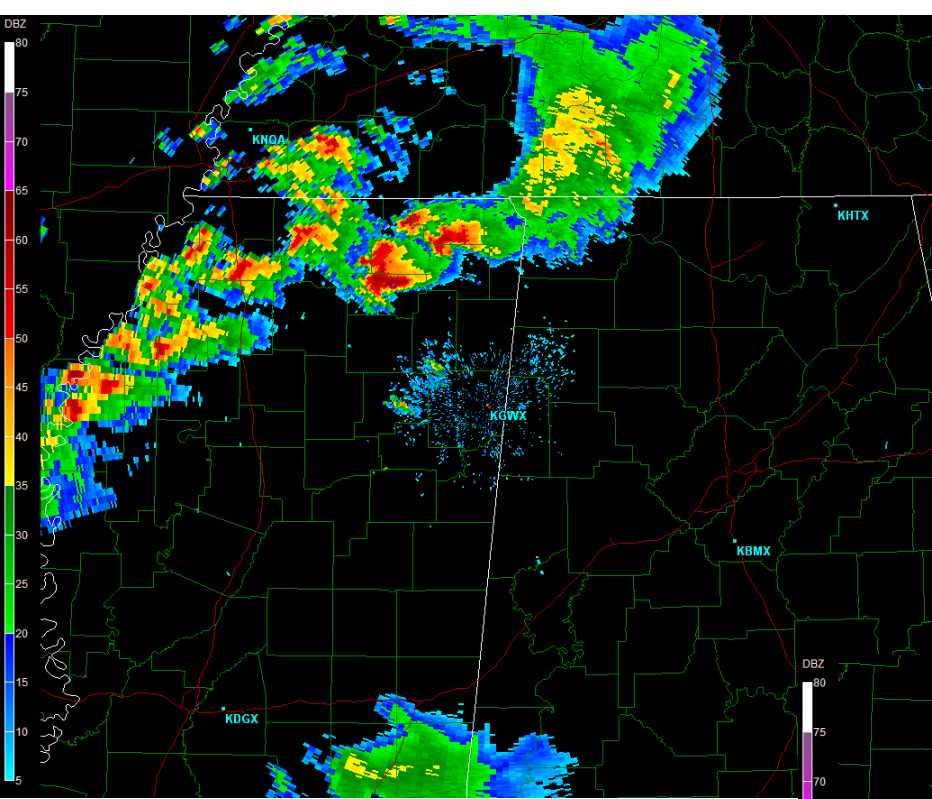
EVWP Provided 226% More Wind Estimates than VWP

VWP Total Wind Estimates = 57

EVWP Total Wind Estimates - 186







Site: KGWX  
 VST: 05/02/2008 23:52:45 UTC  
 Prod: 05/02/2008 23:52:44 UTC  
 VCP: 212  
 Tilt: 0.463°

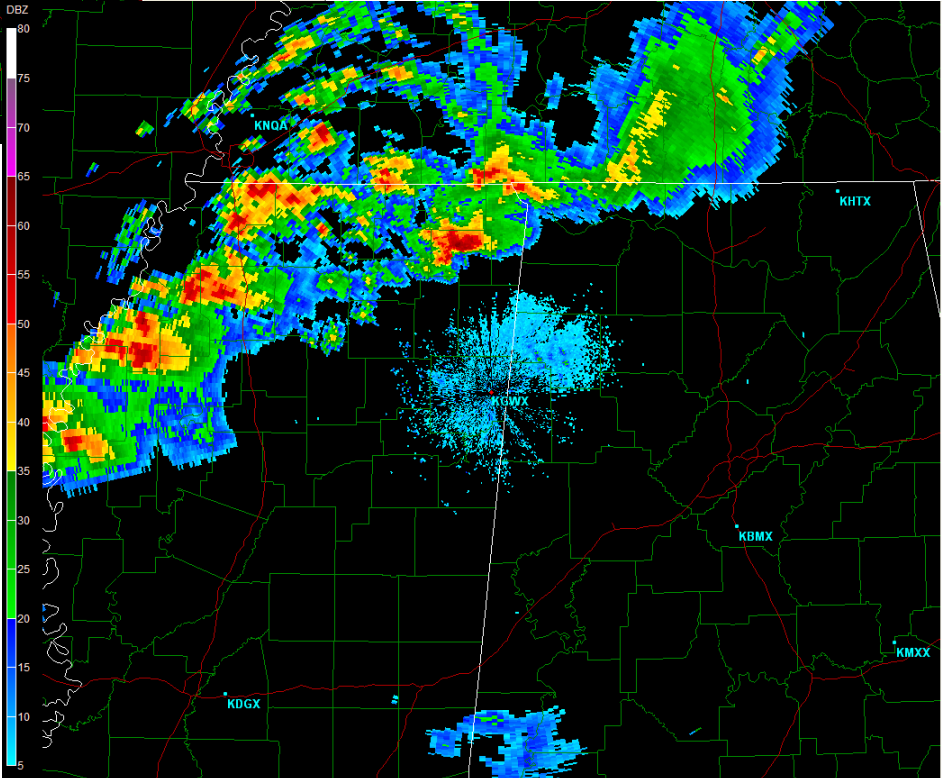
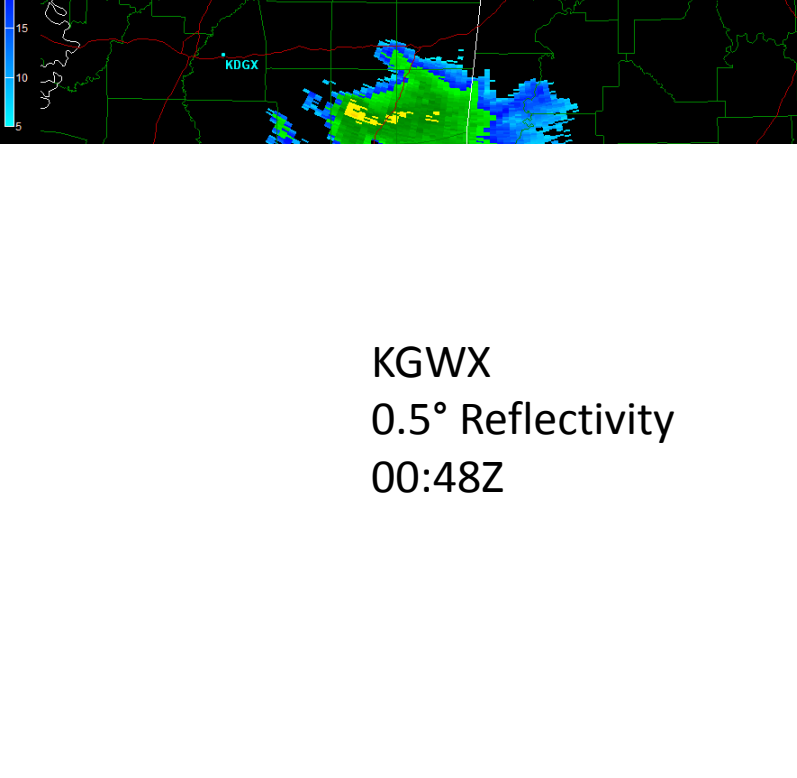
Select Sweep:  
 Base Reflectivity  
 Base Velocity  
 Storm Relative  
 Spectrum Width

Select Tilt:  

0.5°	0.9°	1.3°	1.8°
2.4°	3.1°	4.0°	5.1°
6.4°	7.9°	10.0°	12.5°
15.6°	19.5°		

Warnings:  
 Flash Flood - 0  
 Thunderstorm - 0  
 Tornado - 0  
 Smoothing  
 Dealias

KGWX  
 0.5° Reflectivity  
 23:52Z



Site: KGWX  
 VST: 05/03/2008 00:48:42 UTC  
 Prod: 05/03/2008 00:48:41 UTC  
 VCP: 212  
 Tilt: 0.463°

Select Sweep:  
 Base Reflectivity  
 Base Velocity  
 Storm Relative  
 Spectrum Width

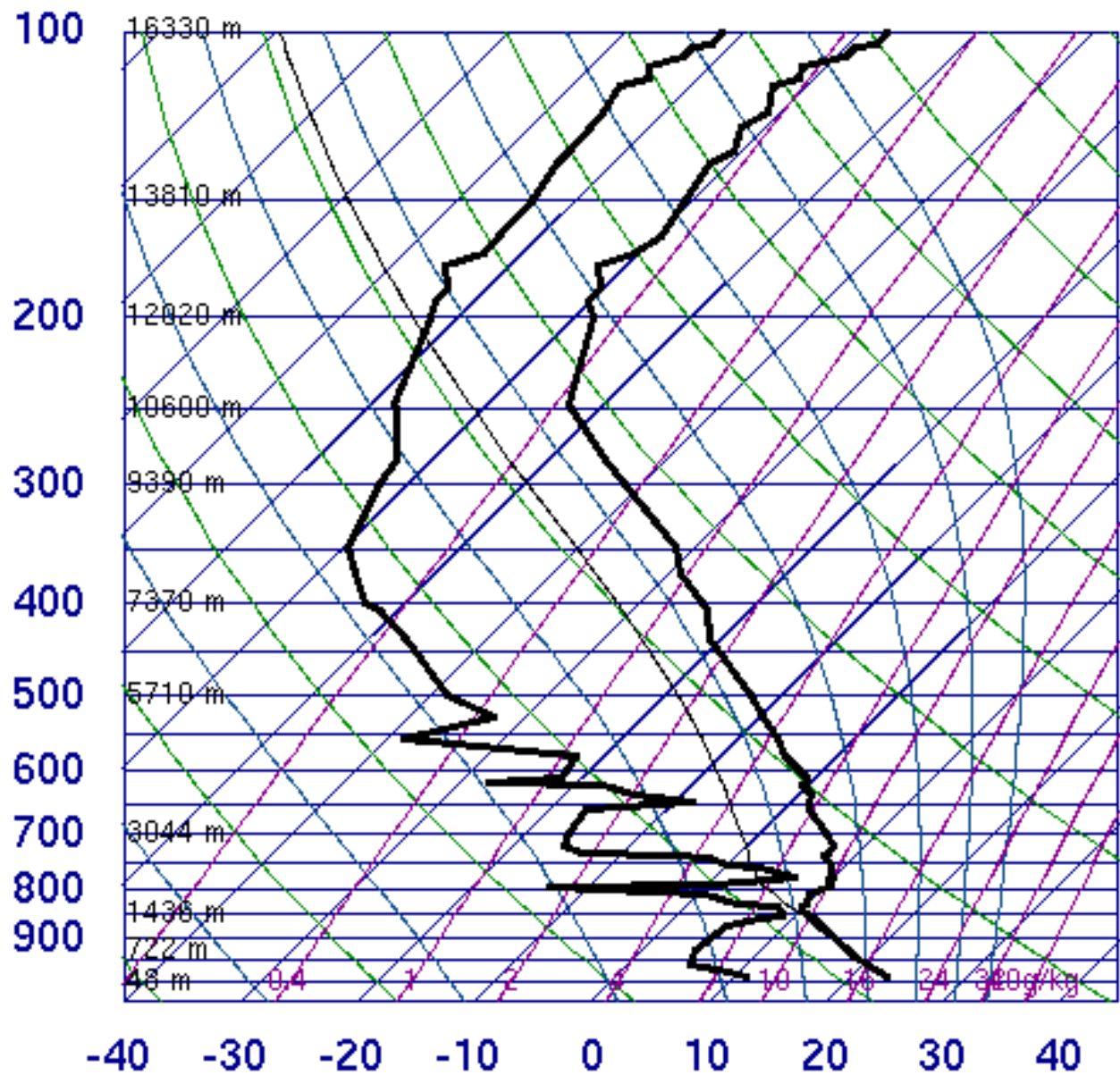
Select Tilt:  

0.5°	0.9°	1.3°	1.8°
2.4°	3.1°	4.0°	5.1°
6.4°	8.0°	10.0°	12.5°
15.6°	19.5°		

Warnings:  
 Flash Flood - 0  
 Thunderstorm - 0  
 Tornado - 0  
 Smoothing  
 Dealias

KGWX  
 0.5° Reflectivity  
 00:48Z

# 72340 LZK North Little Rock



SLAT	34.83
SLON	-92.27
SELV	172.0
SHOW	2.54
LIFT	6.26
LFTV	6.03
SWET	293.3
KINX	10.40
CTOT	21.40
VTOT	23.50
TOTL	44.90
CAPE	0.00
CAPV	0.00
CINS	0.00
CINV	0.00
EQLV	-9999
EQTV	-9999
LFCT	-9999
LFCV	-9999
BRCH	0.00
BRCV	0.00
LCLT	276.6
LCLP	778.9
MLTH	297.0
MLMR	6.40
THCK	5662.
PWAT	18.87

00Z 03 May 2008

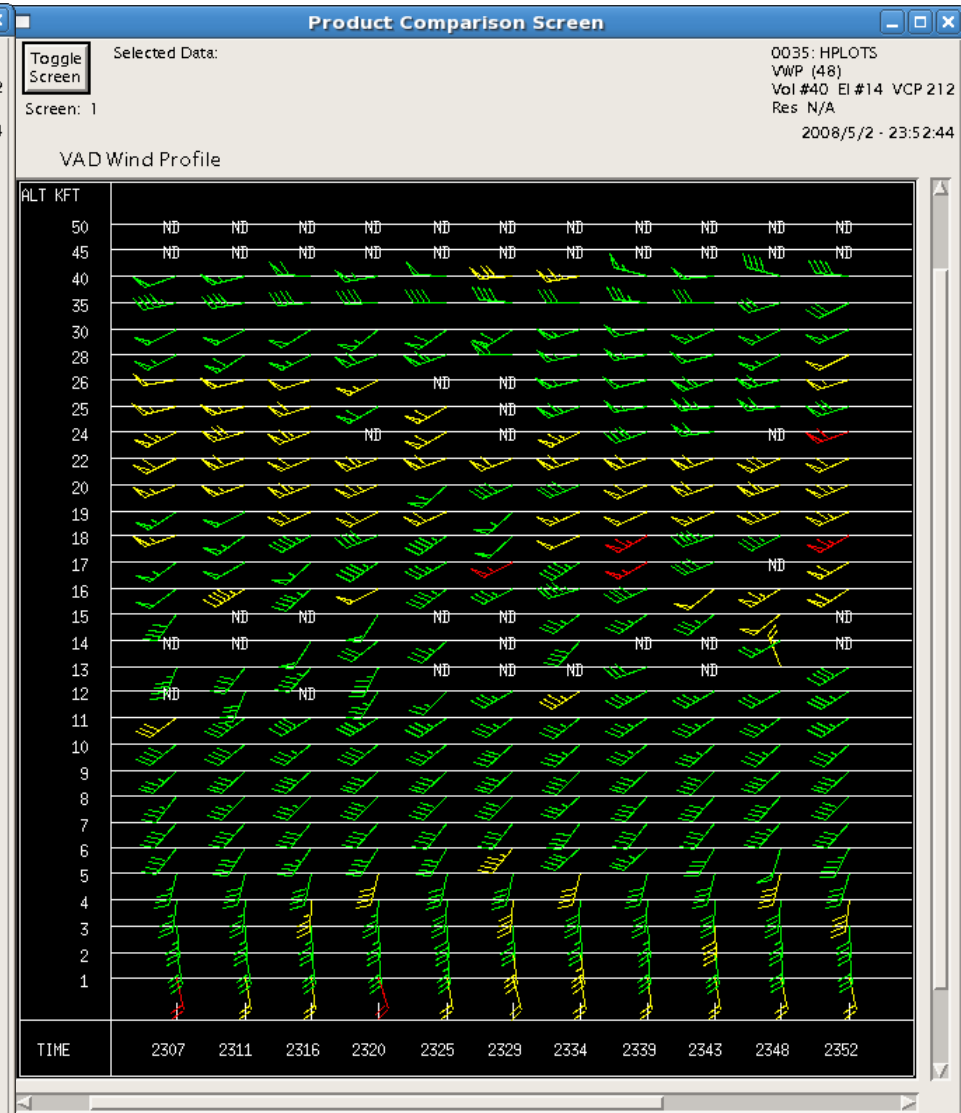
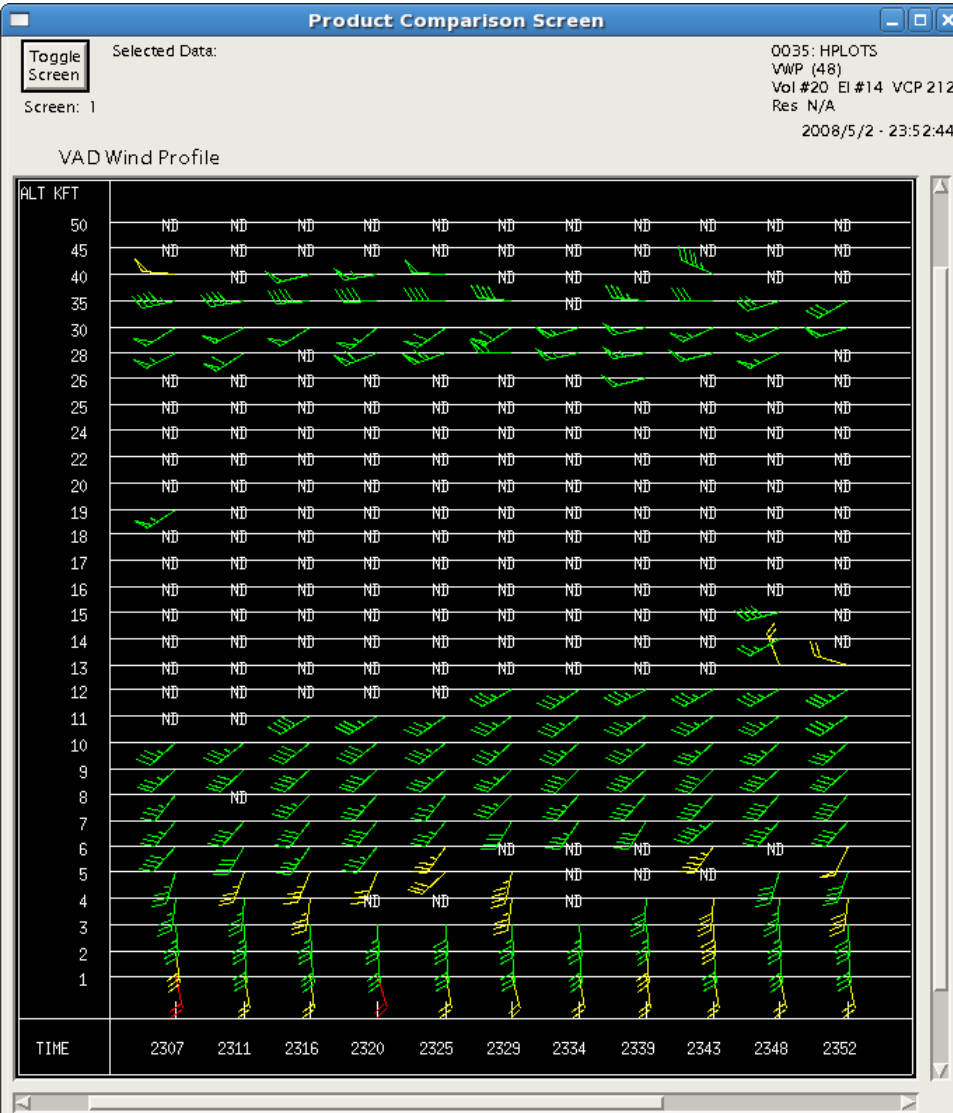
University of Wyoming

# KGWX May 2, 2008 23:07Z – 23:52Z

EVWP Provided 83% More Wind Estimates than VWP

VWP Total Wind Estimates = 155

EVWP Total Wind Estimates - 284



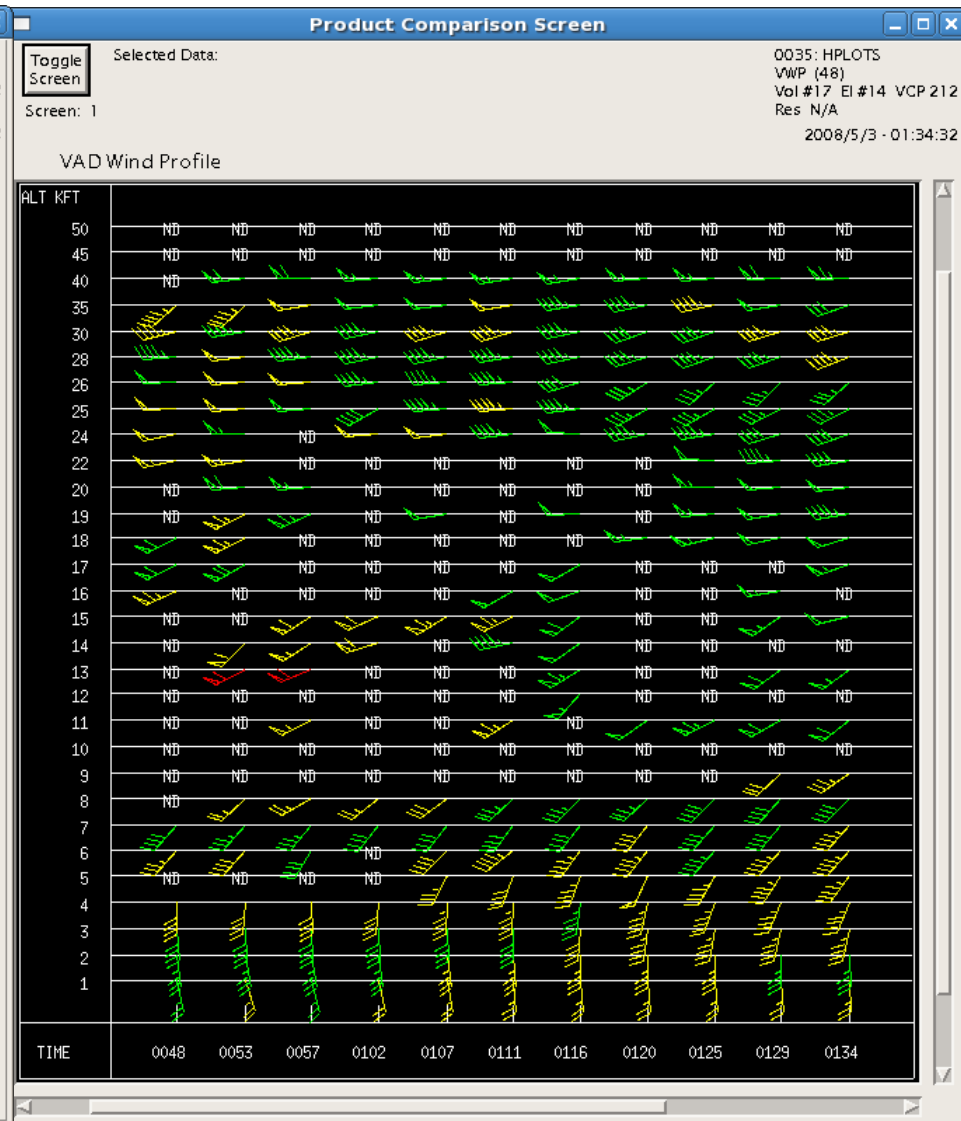
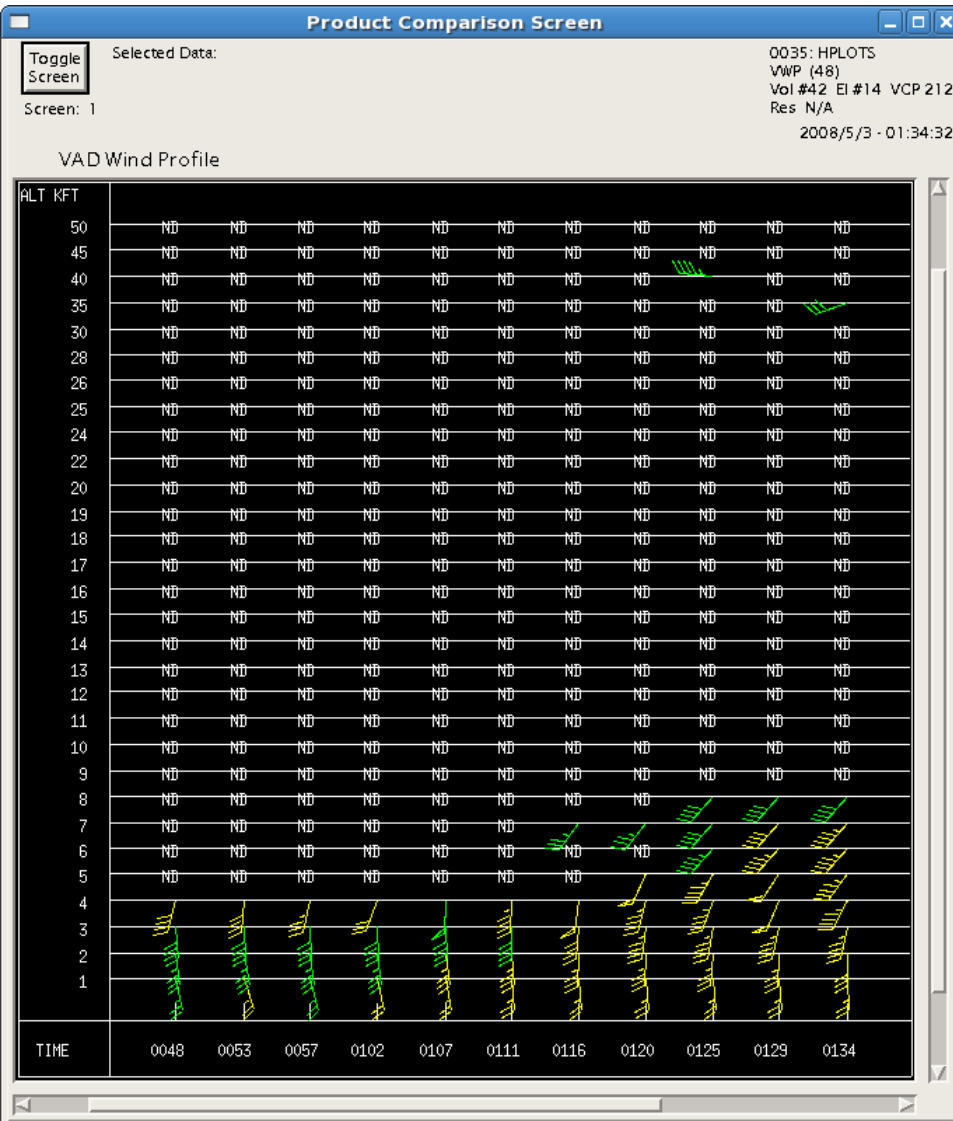


# KGWX May 3, 2008 00:48Z – 01:34Z

EVWP Provided 250% More Wind Estimates than VWP

VWP Total Wind Estimates = 61

EVWP Total Wind Estimates - 214



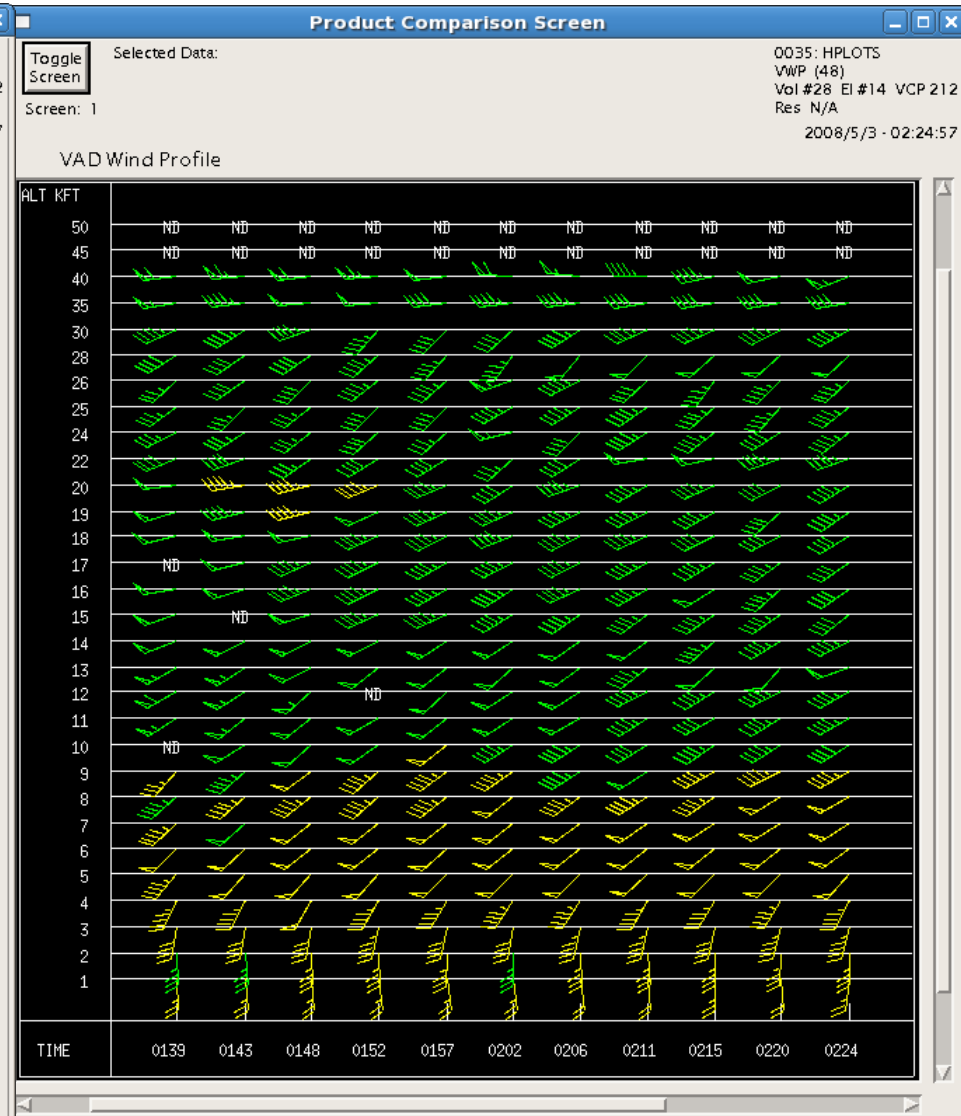
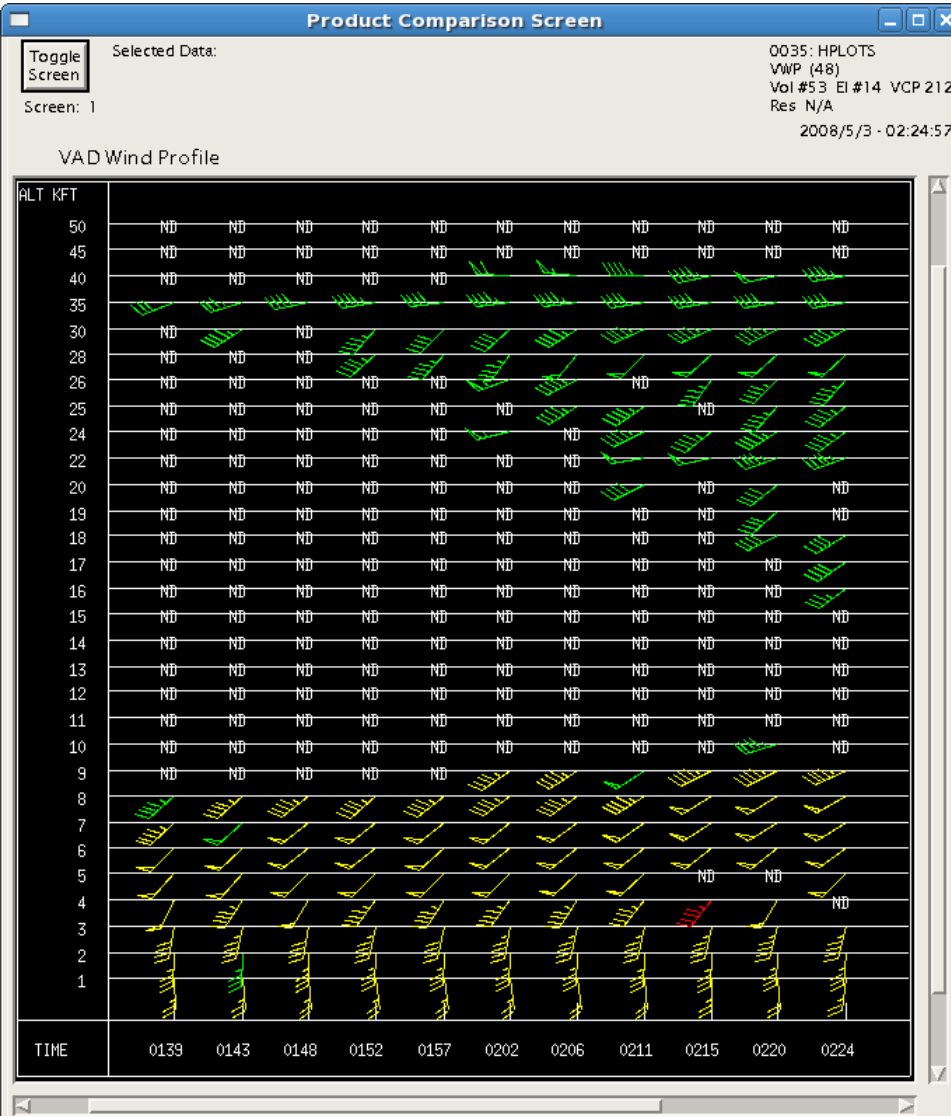


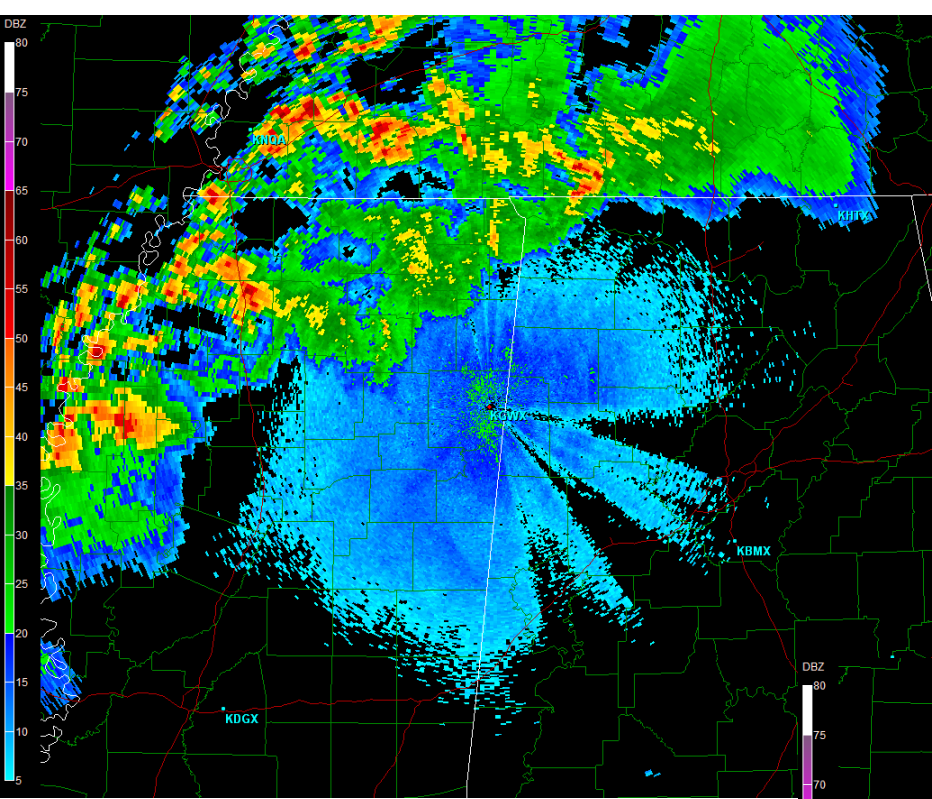
# KGWX May 3, 2008 01:39Z – 02:24Z

EVWP Provided 101% More Wind Estimates than VWP

VWP Total Wind Estimates = 151

EVWP Total Wind Estimates - 304





Site: KGWX  
 VST: 05/03/2008 02:29:34 UTC  
 Prod: 05/03/2008 02:29:32 UTC  
 VCP: 212  
 Tilt: 0.483°

Select Sweep:

- Base Reflectivity
- Base Velocity
- Storm Relative
- Spectrum Width

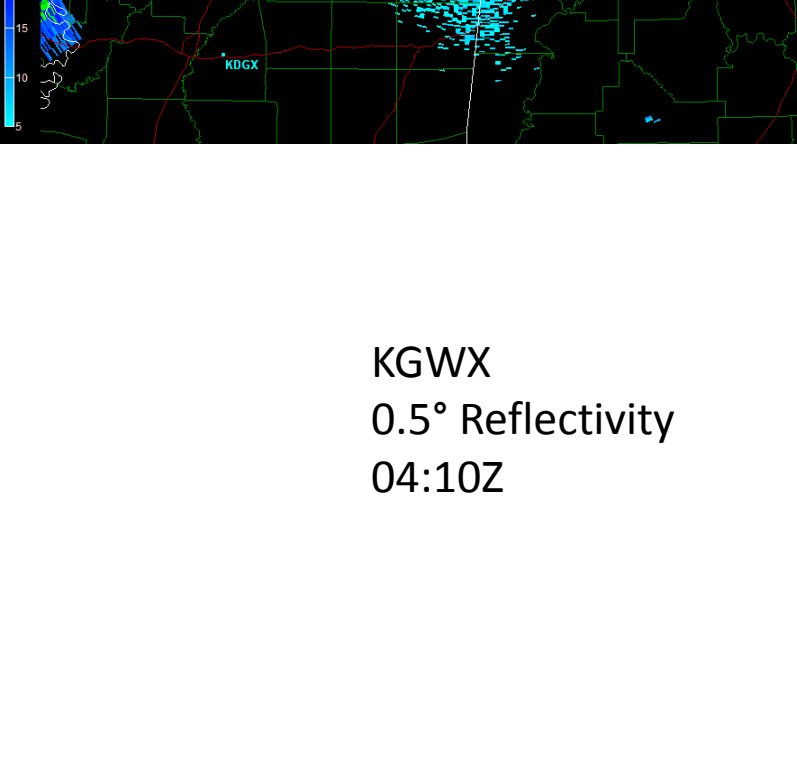
Select Tilt:

0.5°	0.9°	1.3°	1.8°
2.4°	3.1°	4.0°	5.1°
6.4°	8.0°	10.0°	12.5°
15.6°	19.5°		

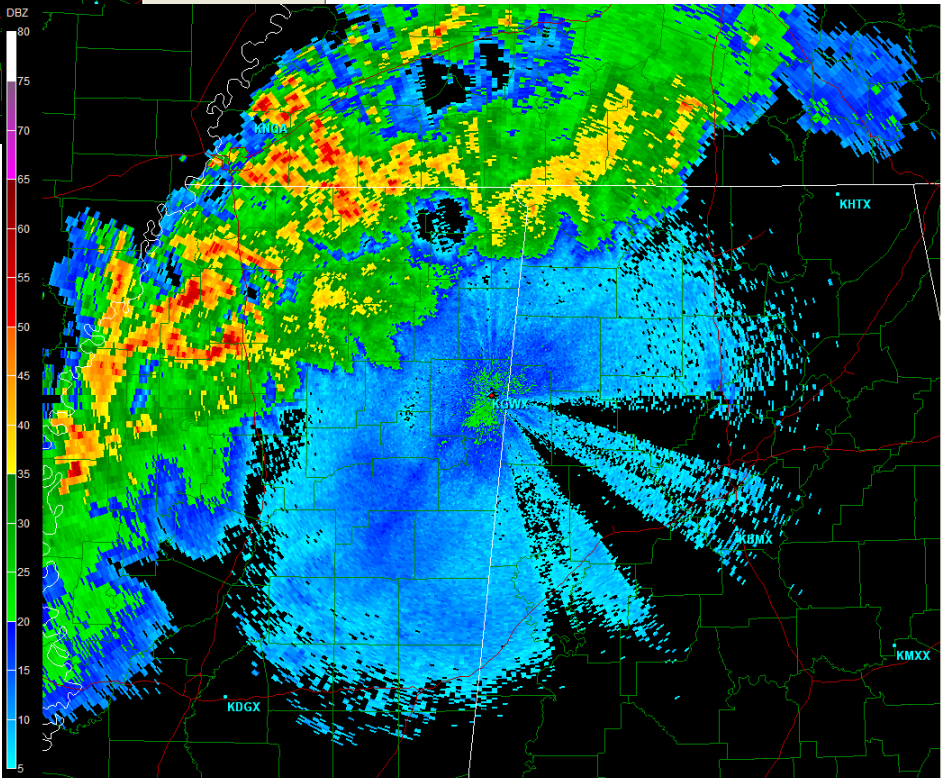
Warnings:

- Flash Flood - 0
- Thunderstorm - 0
- Tornado - 0
- Smoothing
- Dealias

**KGWX**  
**0.5° Reflectivity**  
**02:29Z**



**KGWX**  
**0.5° Reflectivity**  
**04:10Z**



Site: KGWX  
 VST: 05/03/2008 04:10:24 UTC  
 Prod: 05/03/2008 04:10:23 UTC  
 VCP: 212  
 Tilt: 0.483°

Select Sweep:

- Base Reflectivity
- Base Velocity
- Storm Relative
- Spectrum Width

Select Tilt:

0.5°	0.9°	1.3°	1.8°
2.4°	3.1°	4.0°	5.1°
6.4°	8.0°	10.0°	12.5°
15.6°	19.5°		

Warnings:

- Flash Flood - 0
- Thunderstorm - 0
- Tornado - 0
- Smoothing
- Dealias





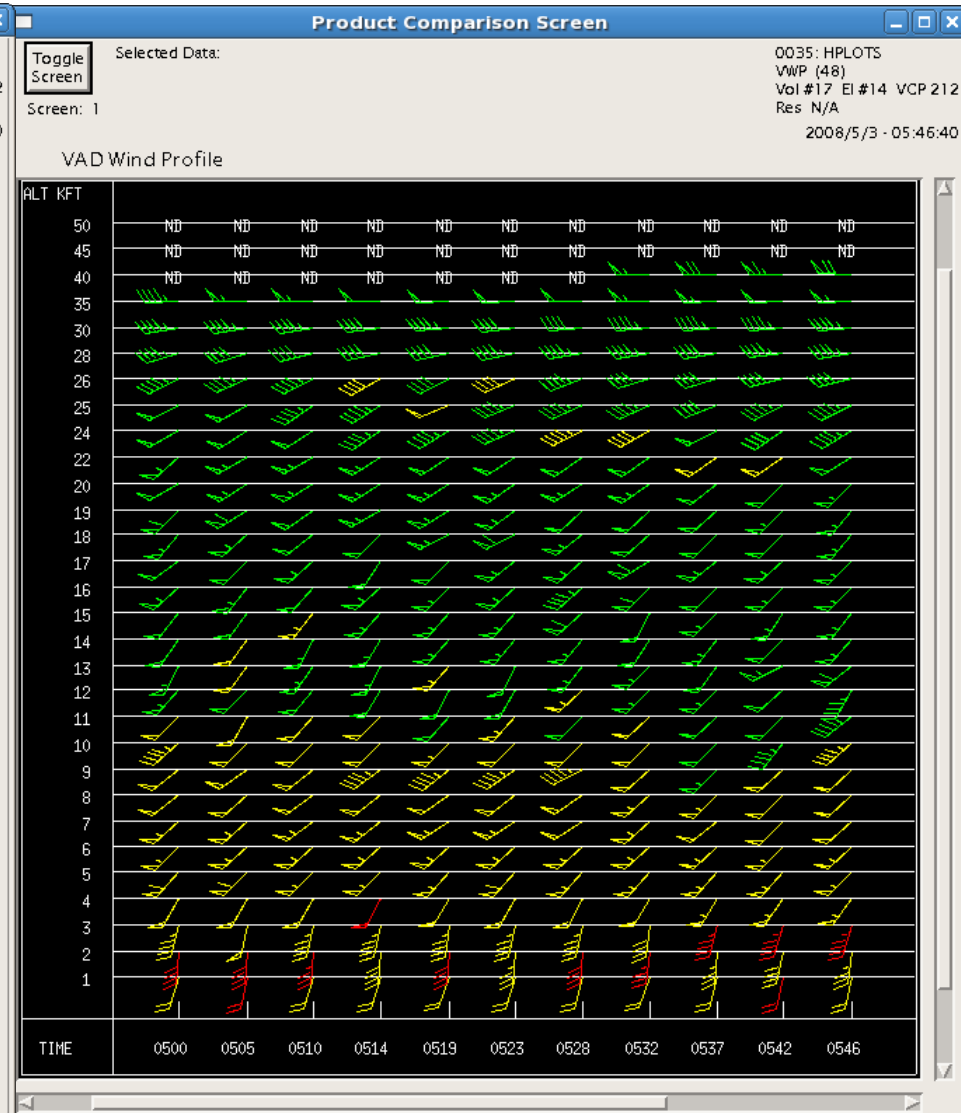
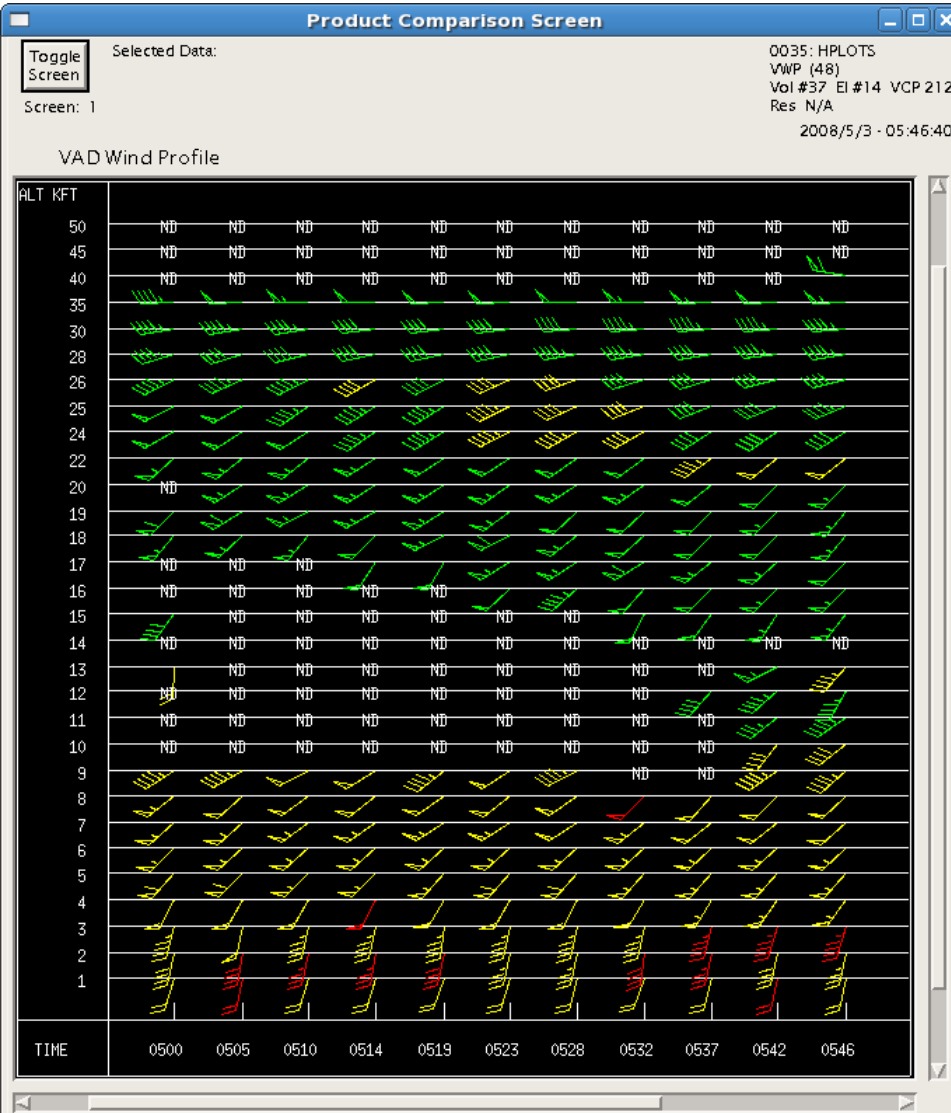


# KGWX May 3, 2008 05:00Z – 05:46Z

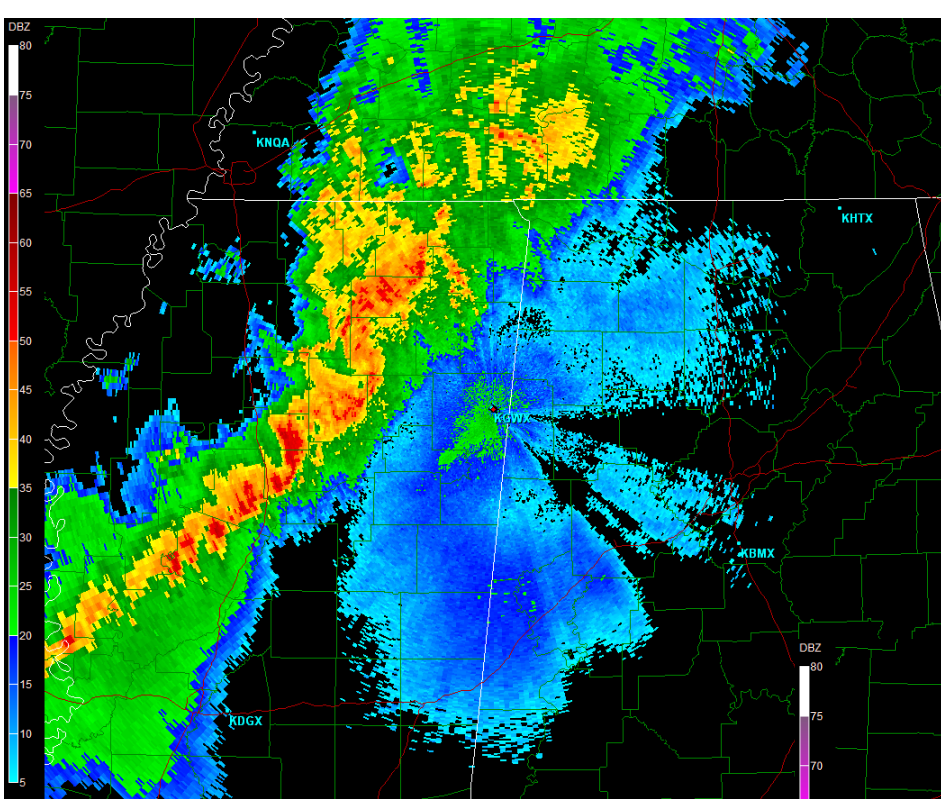
EVWP Provided 27% More Wind Estimates than VWP

VWP Total Wind Estimates = 236

EVWP Total Wind Estimates - 308







Site: KGWX  
 VST: 05/03/2008 06:41:43 UTC  
 Prod: 05/03/2008 06:41:42 UTC  
 VCP: 212  
 Tilt: 0.483°

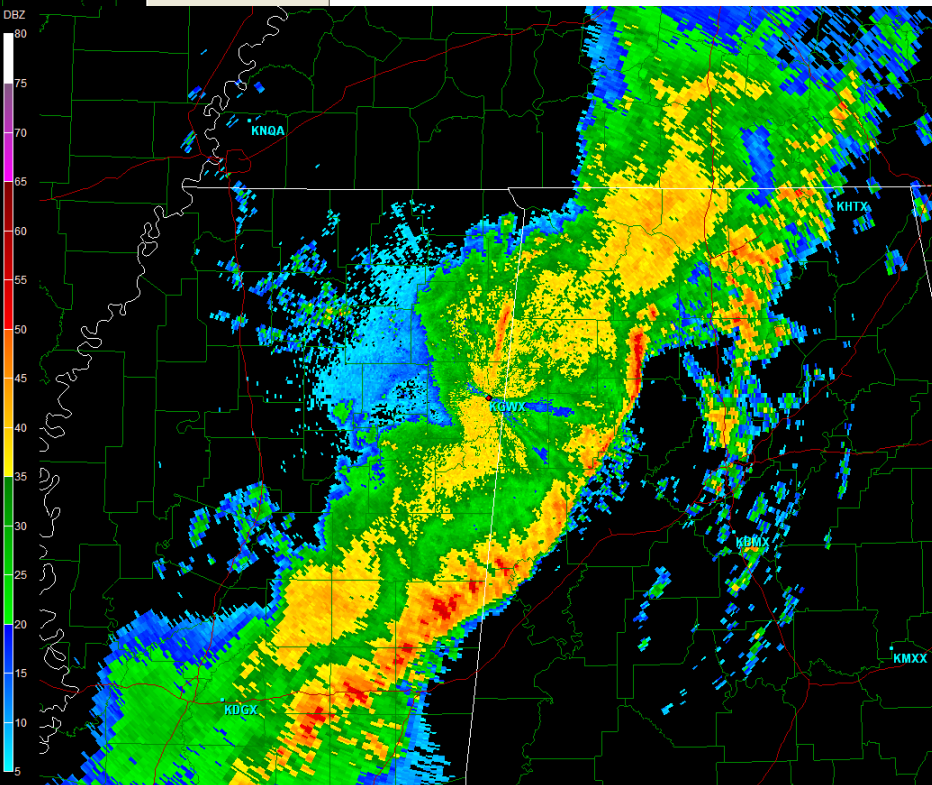
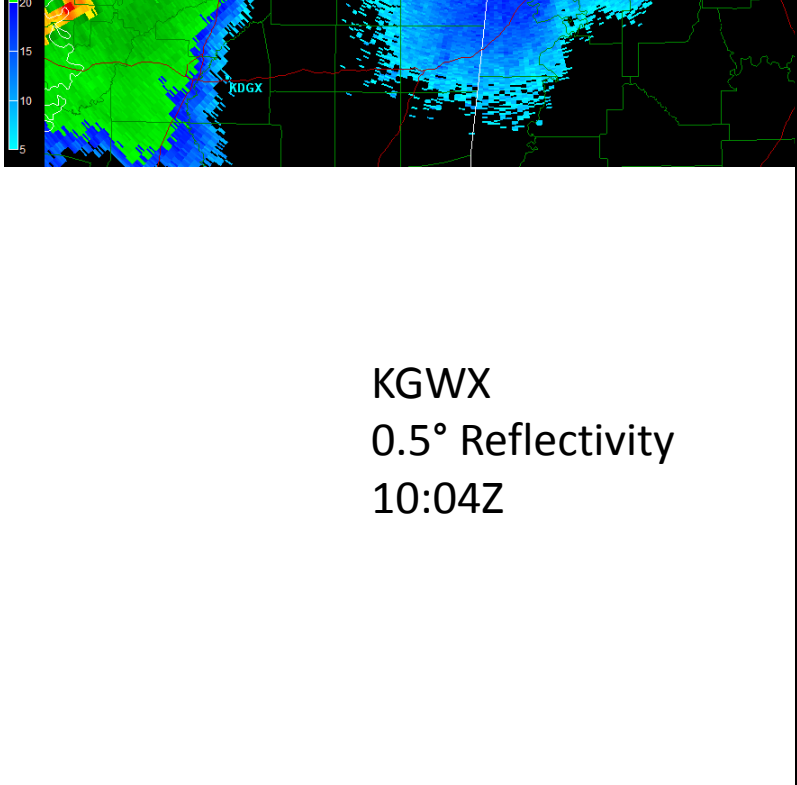
Select Sweep:  
 Base Reflectivity  
 Base Velocity  
 Storm Relative  
 Spectrum Width

Select Tilt:  
 0.5° 0.9° 1.3° 1.8°  
 2.4° 3.1° 4.0° 5.1°  
 6.4° 8.0° 10.0° 12.5°  
 15.6° 19.5°

Warnings:  
 Flash Flood - 0  
 Thunderstorm - 0  
 Tornado - 0

Smoothing  
 Dealias

KGWX  
 0.5° Reflectivity  
 06:41Z



Site: KGWX  
 VST: 05/03/2008 10:04:30 UTC  
 Prod: 05/03/2008 10:04:30 UTC  
 VCP: 212  
 Tilt: 0.483°

Select Sweep:  
 Base Reflectivity  
 Base Velocity  
 Storm Relative  
 Spectrum Width

Select Tilt:  
 0.5° 0.9° 1.3° 1.8°  
 2.4° 3.1° 4.0° 5.1°  
 6.4° 8.0° 10.0° 12.5°  
 15.6° 19.5°

Warnings:  
 Flash Flood - 0  
 Thunderstorm - 0  
 Tornado - 0

Smoothing  
 Dealias

KGWX  
 0.5° Reflectivity  
 10:04Z







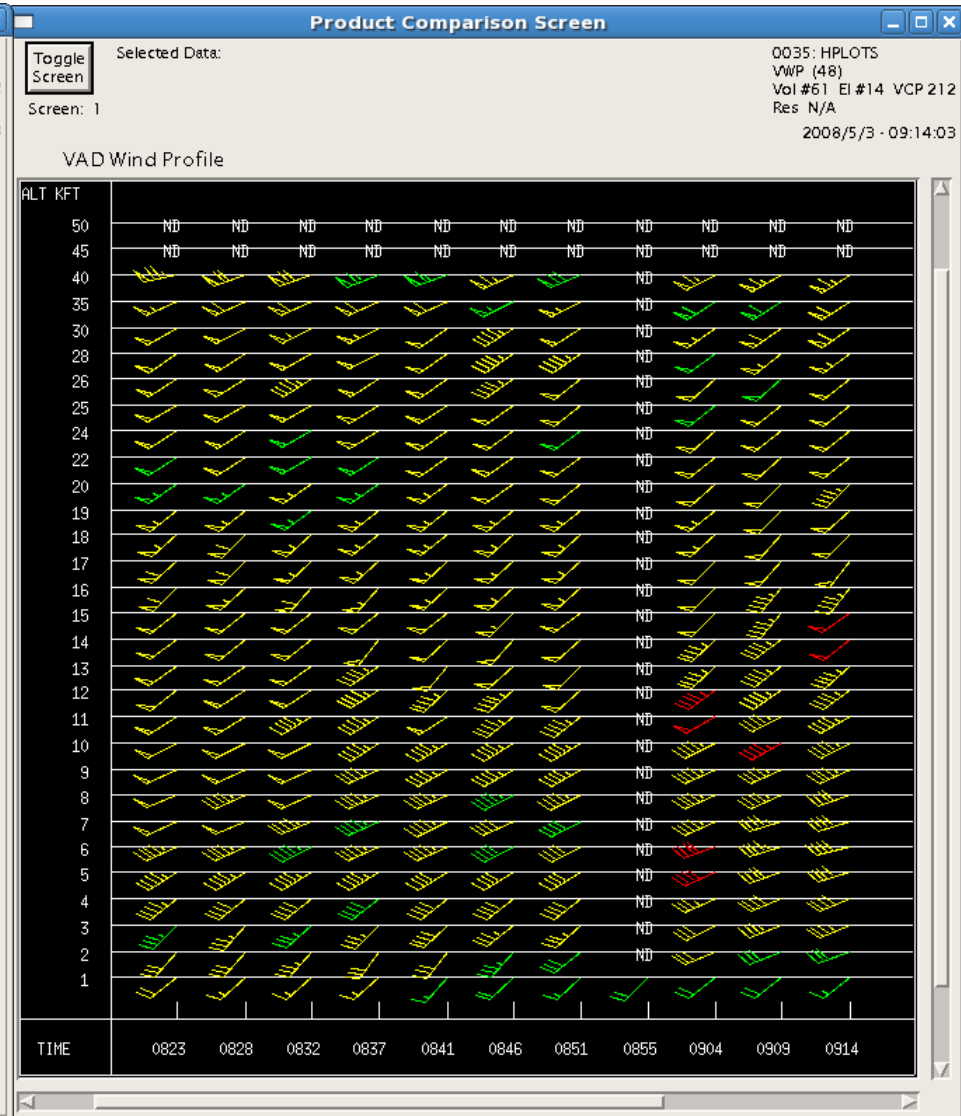
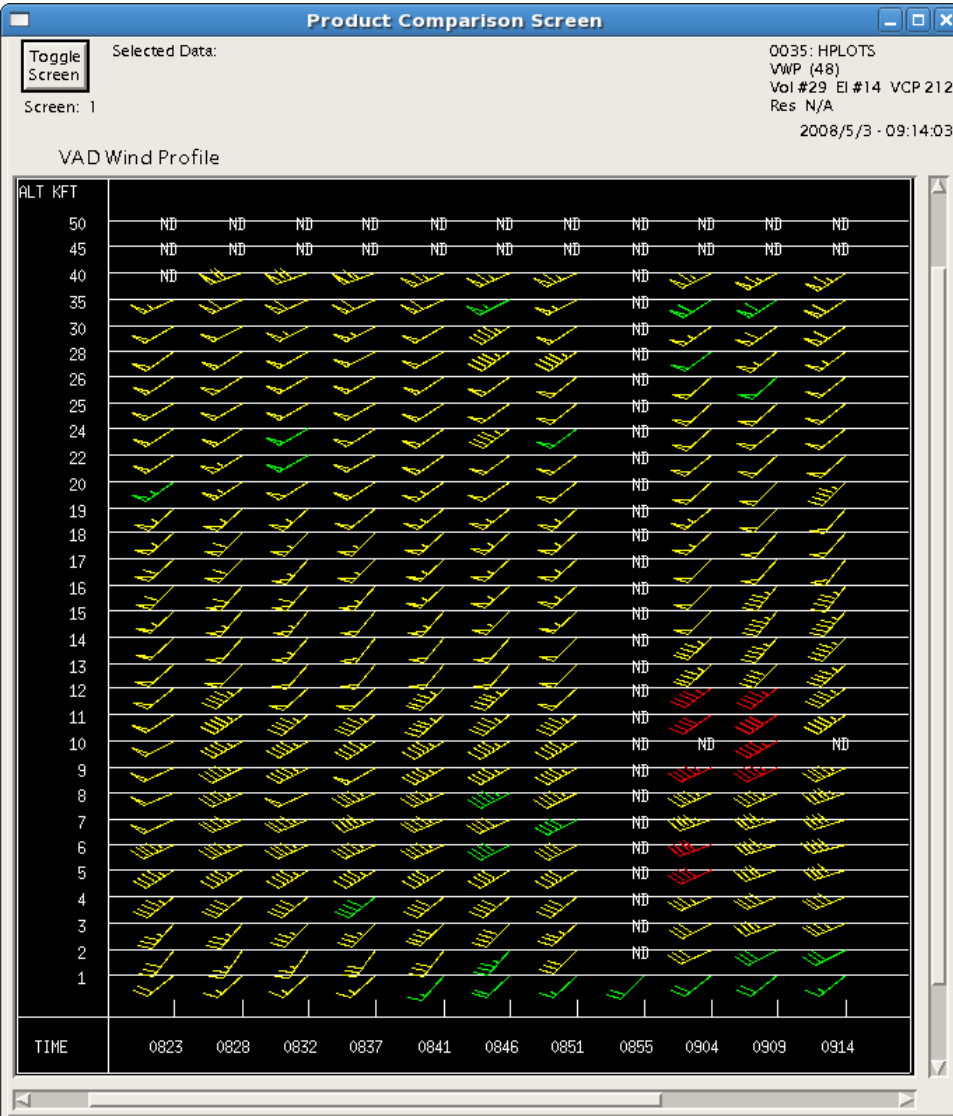


# KGWX May 3, 2008 08:23Z – 09:14Z

EVWP Provided 1.1% More Wind Estimates than VWP

VWP Total Wind Estimates = 278

EVWP Total Wind Estimates - 281

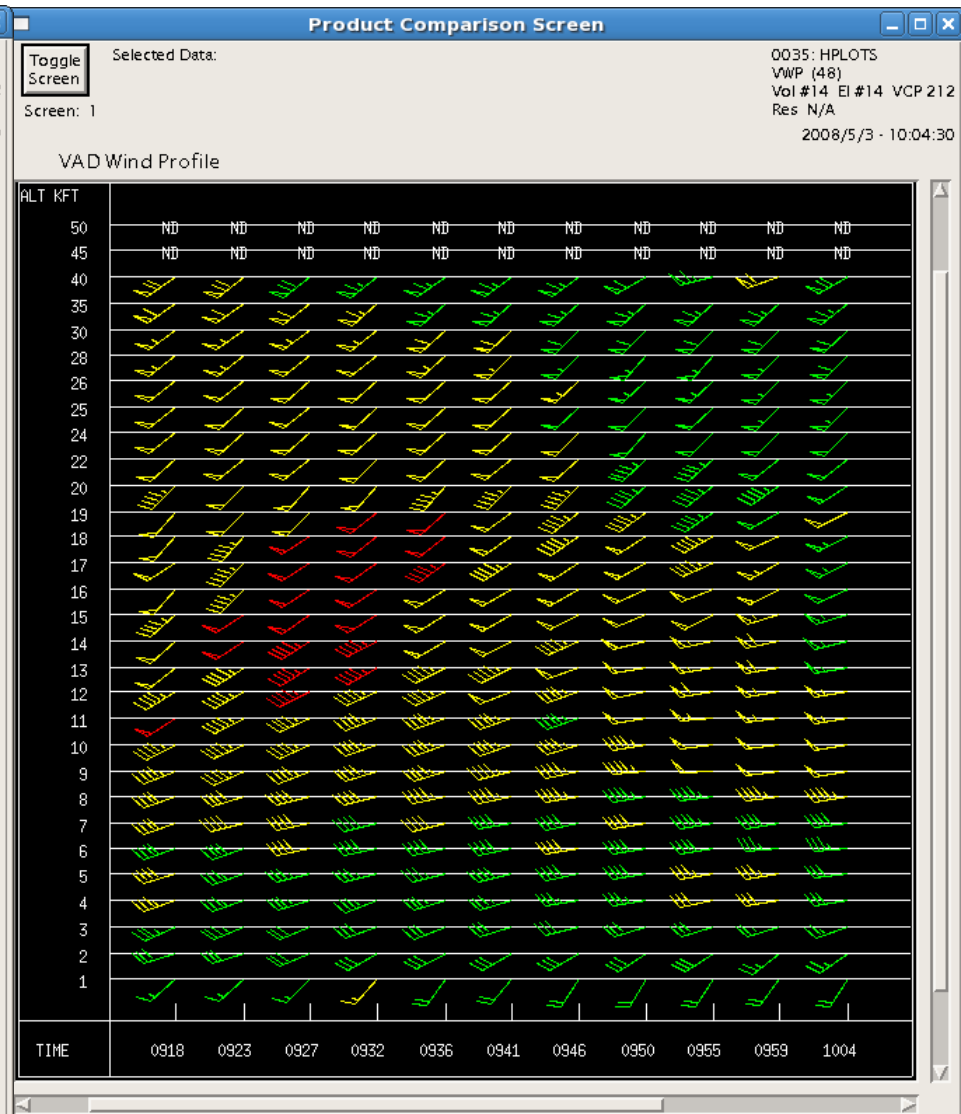
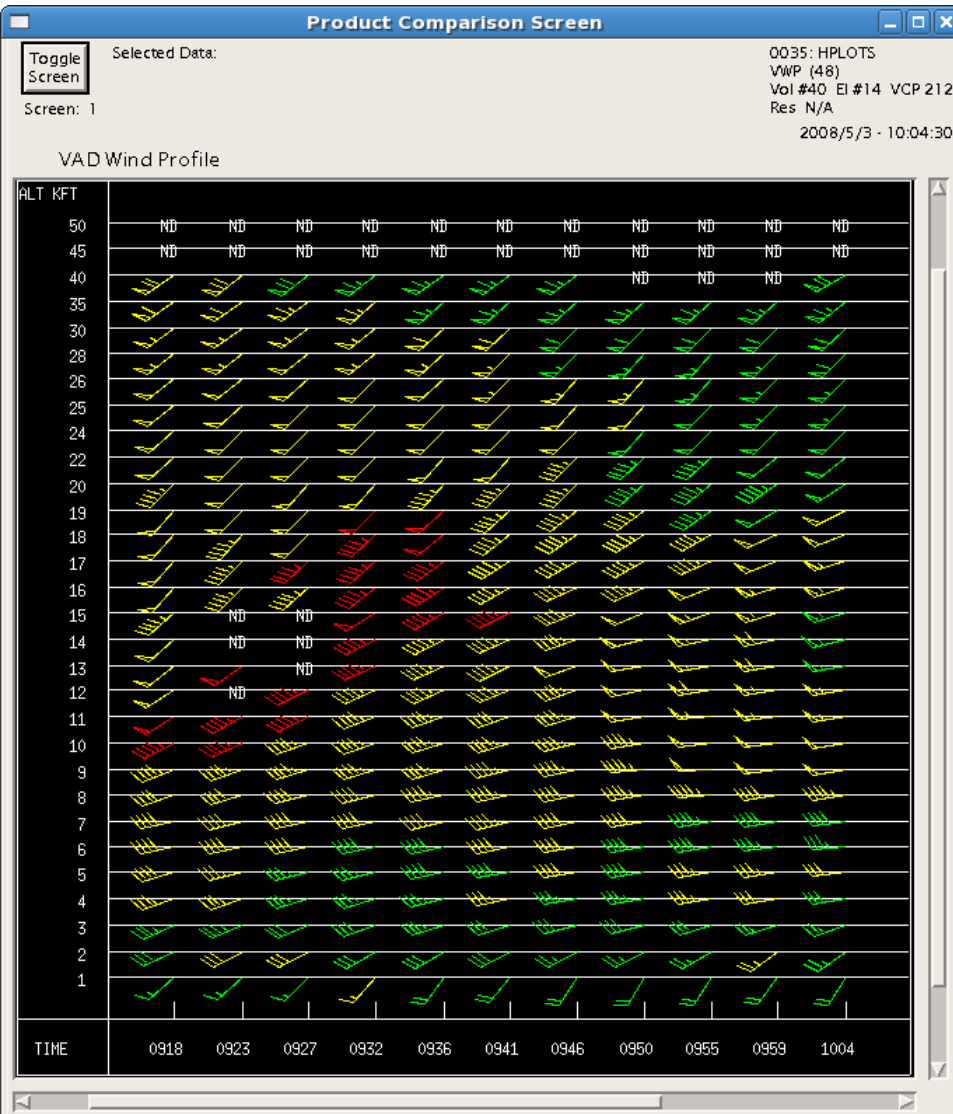


# KGWX May 3, 2008 09:18Z – 10:04Z

EVWP Provided 3.0% More Wind Estimates than VWP

VWP Total Wind Estimates = 299

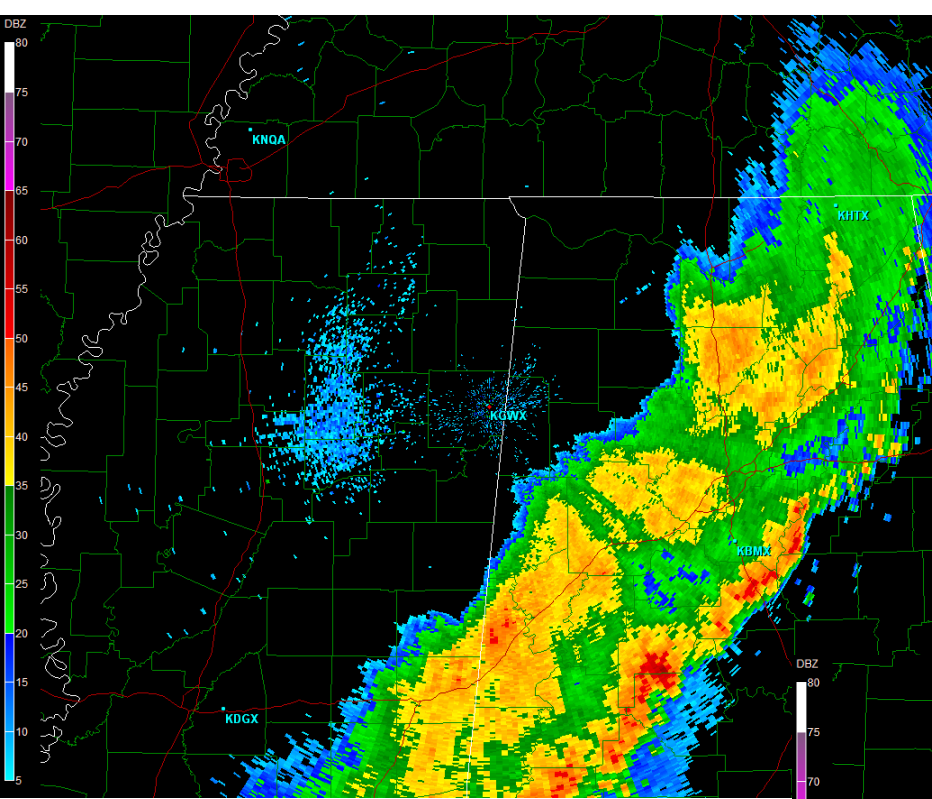
EVWP Total Wind Estimates - 308











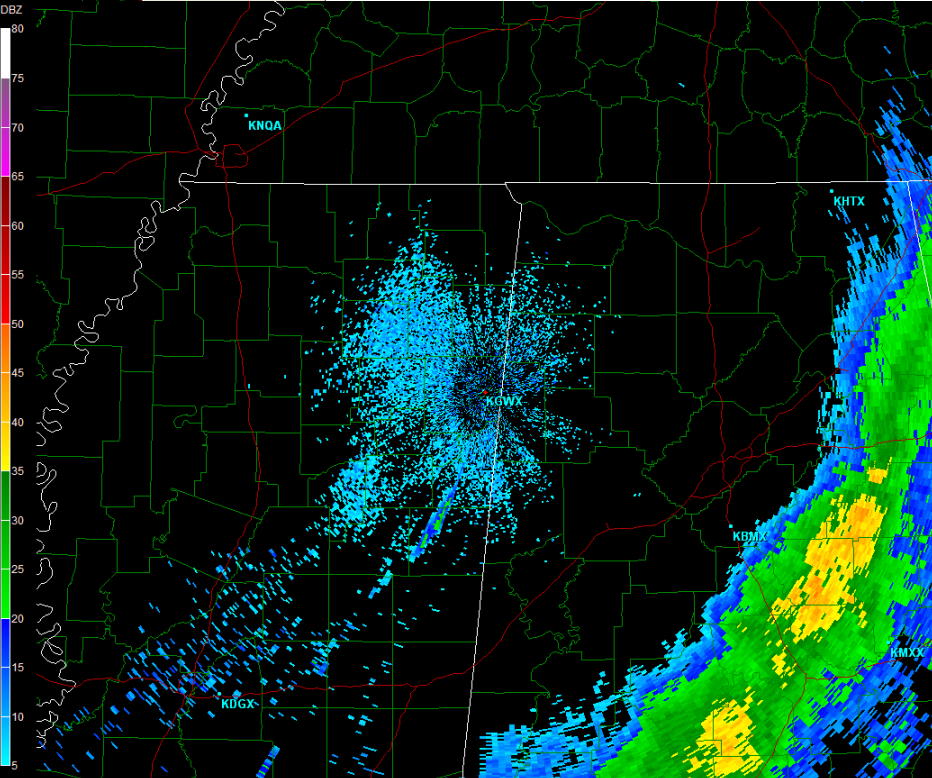
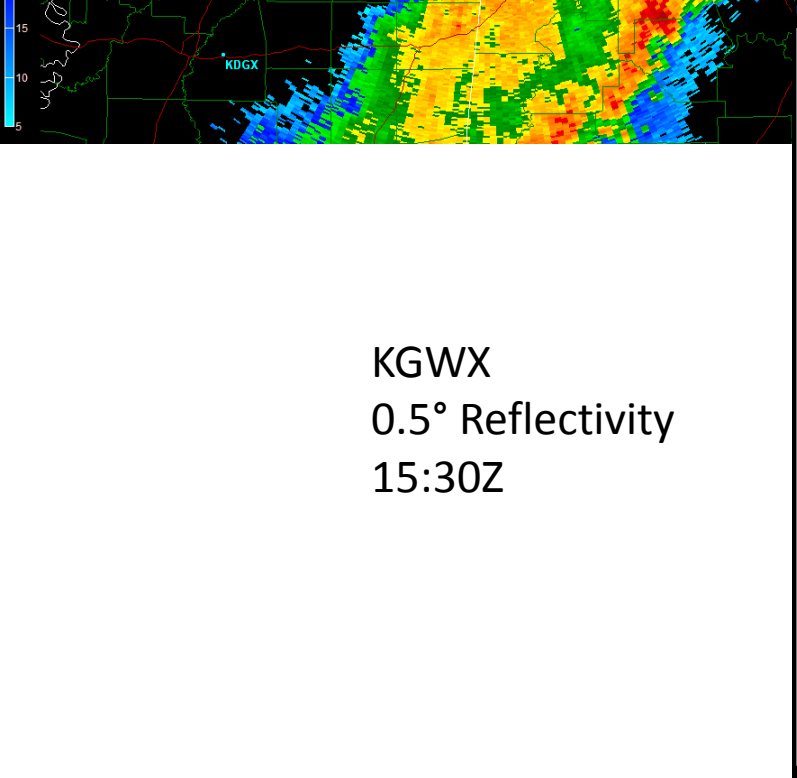
Site: KGWX  
 VST: 05/03/2008 12:26:47 UTC  
 Prod: 05/03/2008 12:26:46 UTC  
 VCP: 212  
 Tilt: 0.483°

Select Sweep:  
 Base Reflectivity  
 Base Velocity  
 Storm Relative  
 Spectrum Width

Select Tilt:  
 0.5° 0.9° 1.3° 1.8°  
 2.4° 3.1° 4.0° 5.1°  
 6.4° 8.0° 10.0° 12.5°  
 15.6° 19.5°

Warnings:  
 Flash Flood - 0  
 Thunderstorm - 0  
 Tornado - 0  
 Smoothing  
 Dealias

**KGWX**  
**0.5° Reflectivity**  
**12:26Z**



Site: KGWX  
 VST: 05/03/2008 15:30:24 UTC  
 Prod: 05/03/2008 15:30:23 UTC  
 VCP: 212  
 Tilt: 0.483°

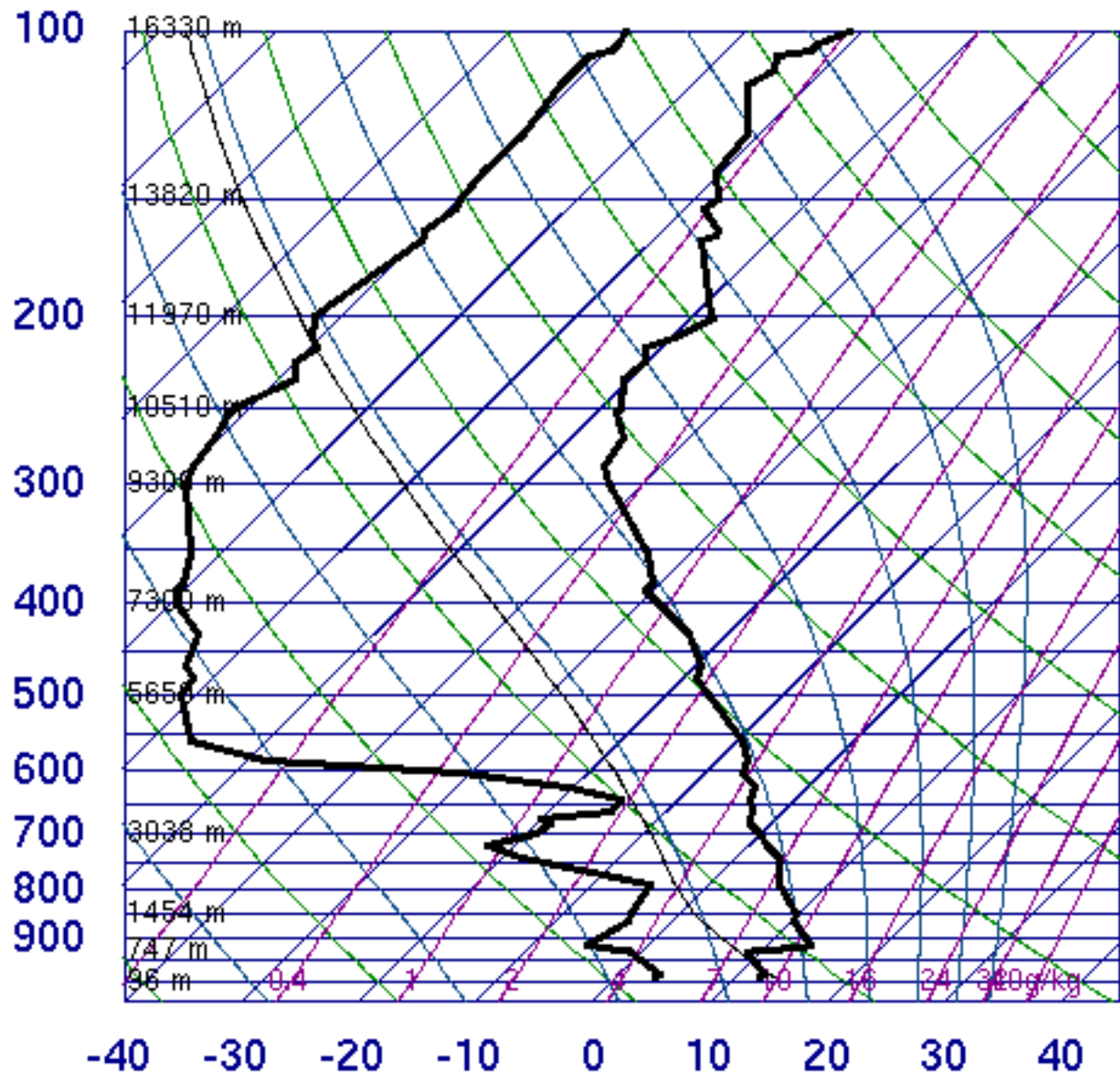
Select Sweep:  
 Base Reflectivity  
 Base Velocity  
 Storm Relative  
 Spectrum Width

Select Tilt:  
 0.5° 0.9° 1.3° 1.8°  
 2.4° 3.1° 4.0° 5.1°  
 6.4° 8.0° 10.0° 12.5°  
 15.6° 19.5°

Warnings:  
 Flash Flood - 0  
 Thunderstorm - 0  
 Tornado - 0  
 Smoothing  
 Dealias

**KGWX**  
**0.5° Reflectivity**  
**15:30Z**

# 72340 LZK North Little Rock



SLAT	34.83
SLON	-92.27
SELV	172.0
SHOW	8.28
LIFT	12.44
LFTV	12.33
SWET	136.9
KINX	2.90
CTOT	12.10
VTOT	26.10
TOTL	38.20
CAPE	0.00
CAPV	0.00
CINS	0.00
CINV	0.00
EQLV	-9999
EQTV	-9999
LFCT	-9999
LFCV	-9999
BRCH	0.00
BRCV	0.00
LCLT	272.7
LCLP	833.7
MLTH	287.3
MLMR	4.51
THCK	555.4
PWAT	10.41

12Z 03 May 2008

University of Wyoming

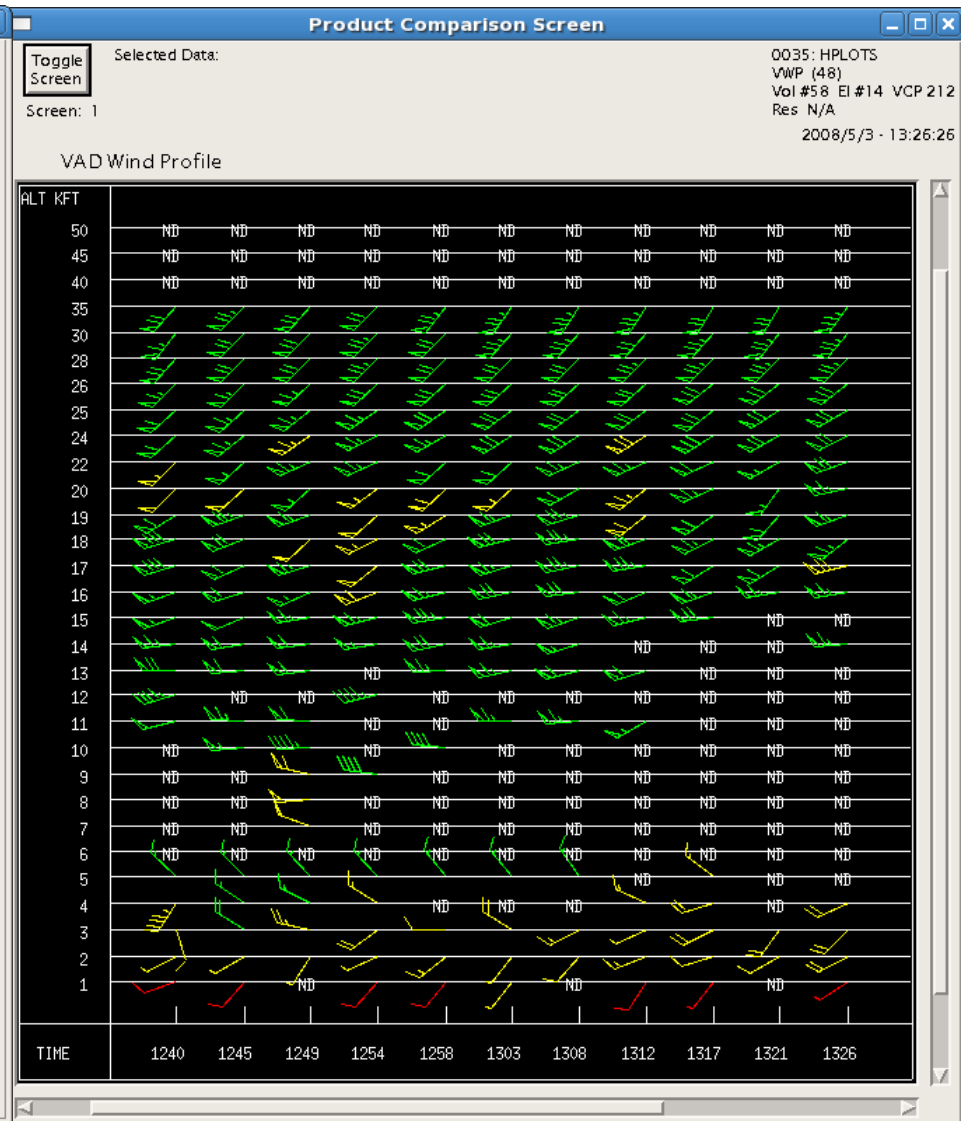
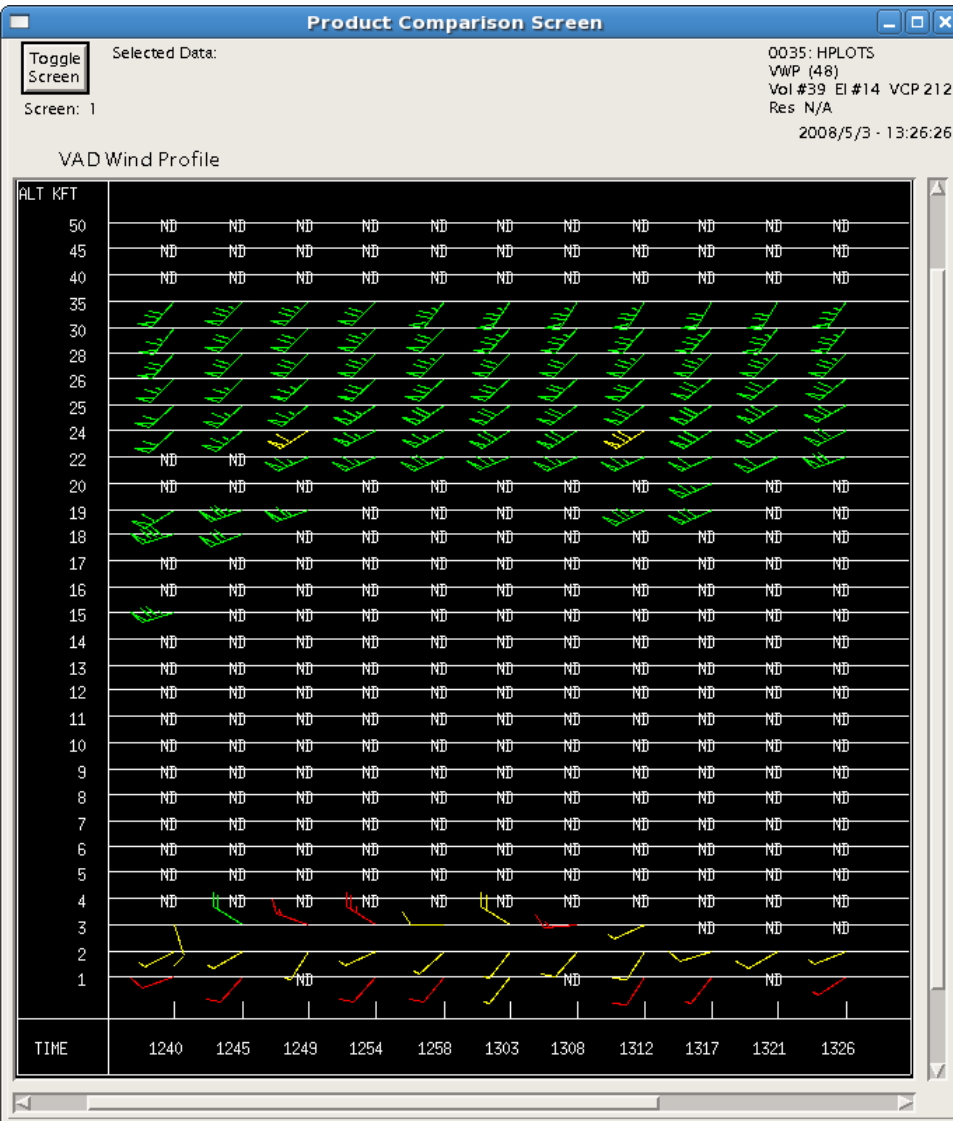


# KGWX May 3, 2008 12:40Z – 13:26Z

EVWP Provided 95% More Wind Estimates than VWP

VWP Total Wind Estimates = 111

EVWP Total Wind Estimates - 217





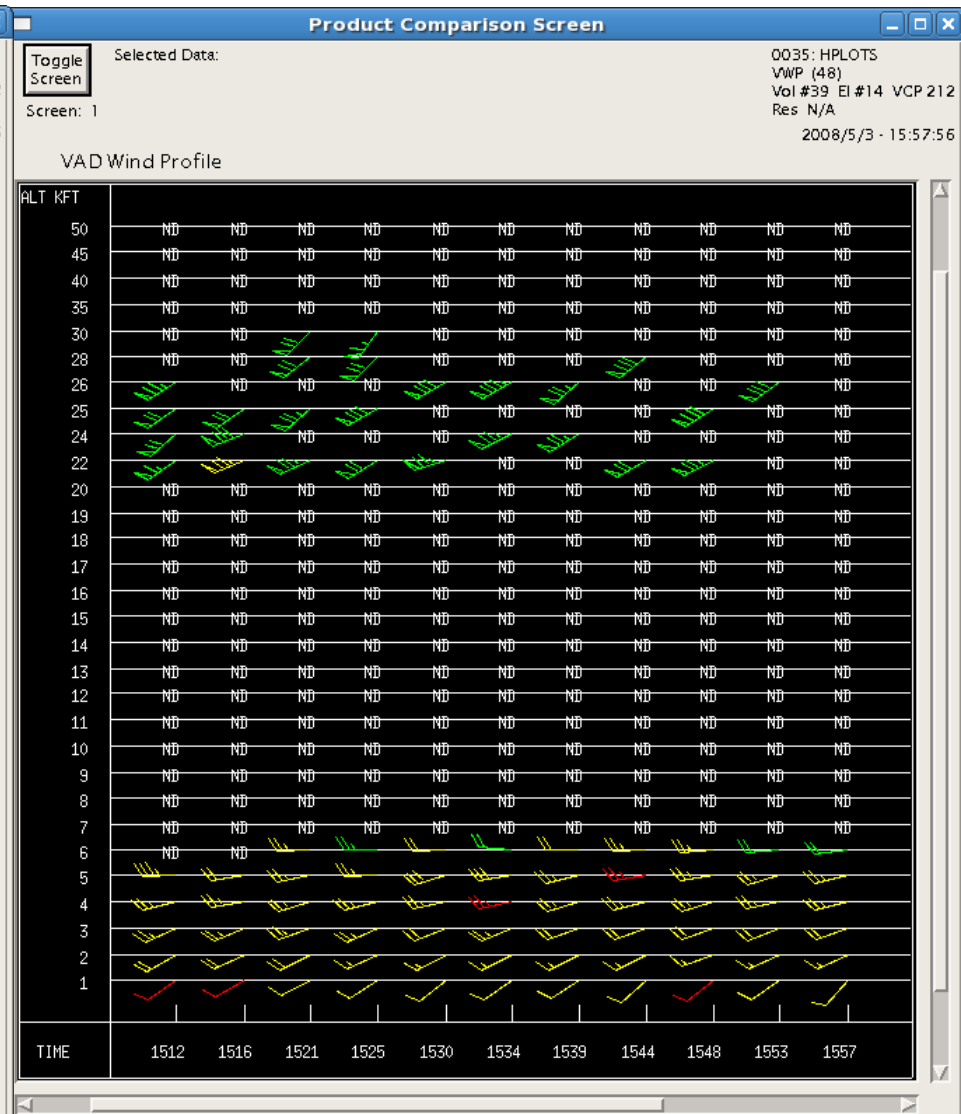
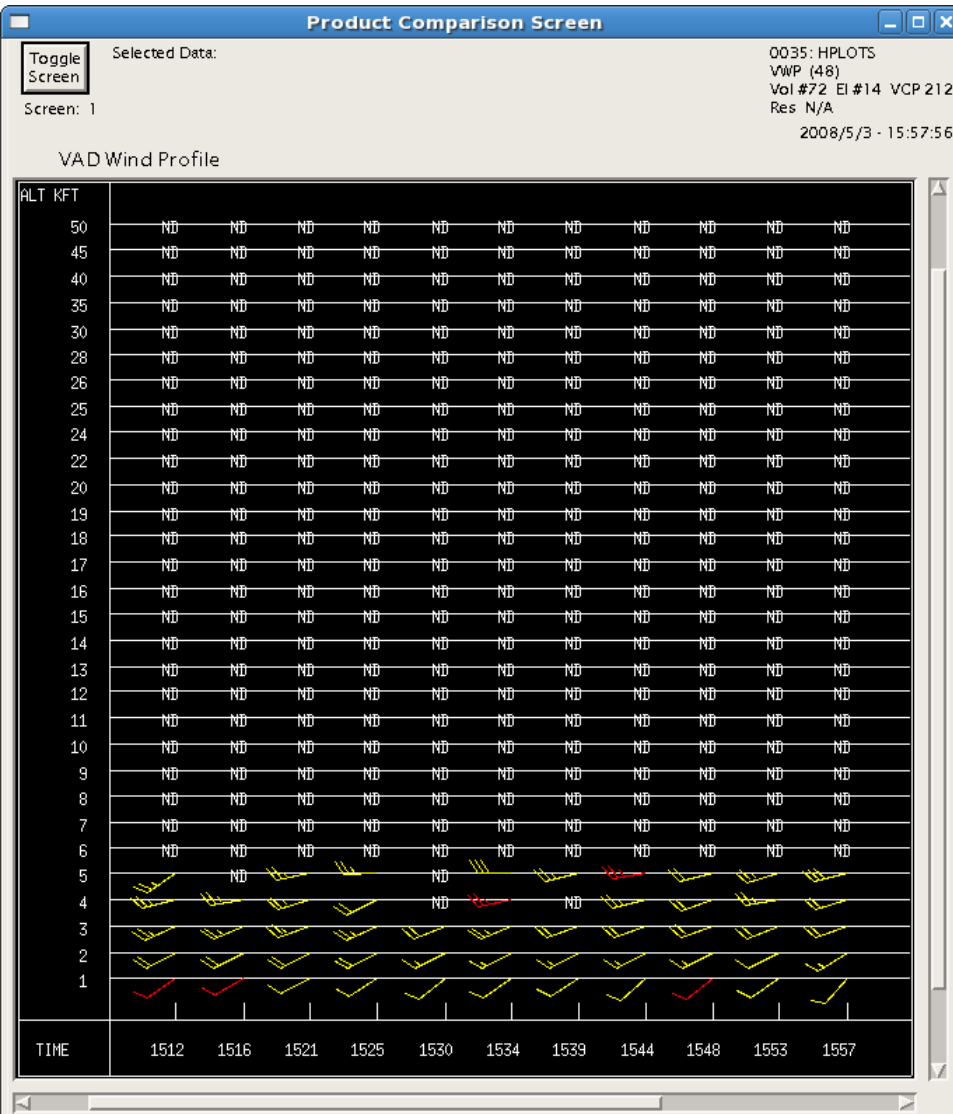


# KGWX May 3, 2008 15:12Z – 15:57Z

EVWP Provided 76% More Wind Estimates than VWP

VWP Total Wind Estimates = 51

EVWP Total Wind Estimates - 90





# Columbus MS (KGWX)

May 2 18:05Z through May 3 15:57Z, 2008

Severe Storms / Squall Line  
Convective Event

## VWP – EVWP Comparison Event Summary

Total Number of Volume Scans.....285

VWP Total Number of Wind Estimates.....4613

EVWP Total Number of Wind Estimates.....6381

**EVWP Provided 38.3% More Wind Estimates than VWP**