



# Drought Information Statement

for southeast Ohio, northeast Kentucky, southwest Virginia, and much of West Virginia

Valid October 24, 2024

Issued By: NWS Charleston, WV

Contact Information: [rlx.webmaster@noaa.gov](mailto:rlx.webmaster@noaa.gov)

- This product will be updated November 1, 2024
  - Please see all currently available products at <https://drought.gov/drought-information-statements>.
  - Please visit <https://www.weather.gov/RLX/DroughtInformationStatement> for previous statements.
- 
- Slight degradation in McDowell County WV, otherwise no changes





# Current Drought Conditions

Latest Drought Monitor

## Main Takeaways

- **D4 (Exceptional Drought)**: No change
- **D3 (Extreme Drought)**: No change
- **D2 (Severe Drought)**: No change
- **D1 (Moderate Drought)**: No change
- **D0: (Abnormally Dry)**: Expansion into McDowell County WV

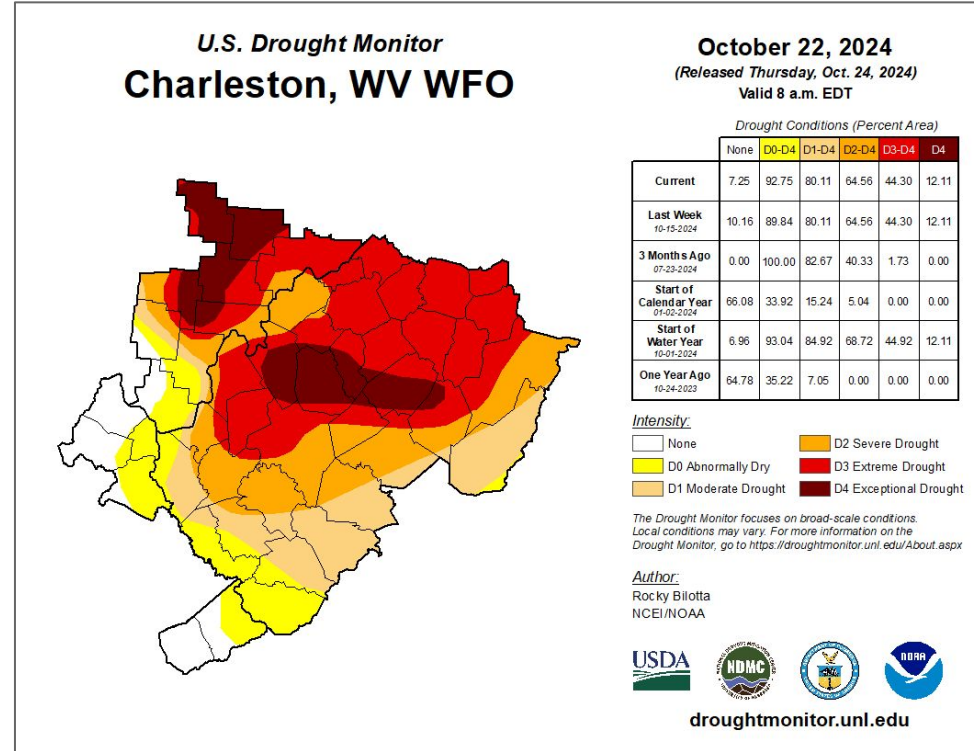


Image Caption: Right: [U.S. Drought Monitor valid 8am EDT October 24, 2024](https://droughtmonitor.unl.edu)





# Current Drought Conditions

## Latest Drought Monitor Four-Week Change

- **Four Week Drought Monitor Class Change**
  - **Drought Worsened:**
  - **No Change:** Areas of southeast OH and northern WV
  - **Drought Improved:** Significant improvement across southwest VA, mountains of WV, northeast KY, southern half of WV

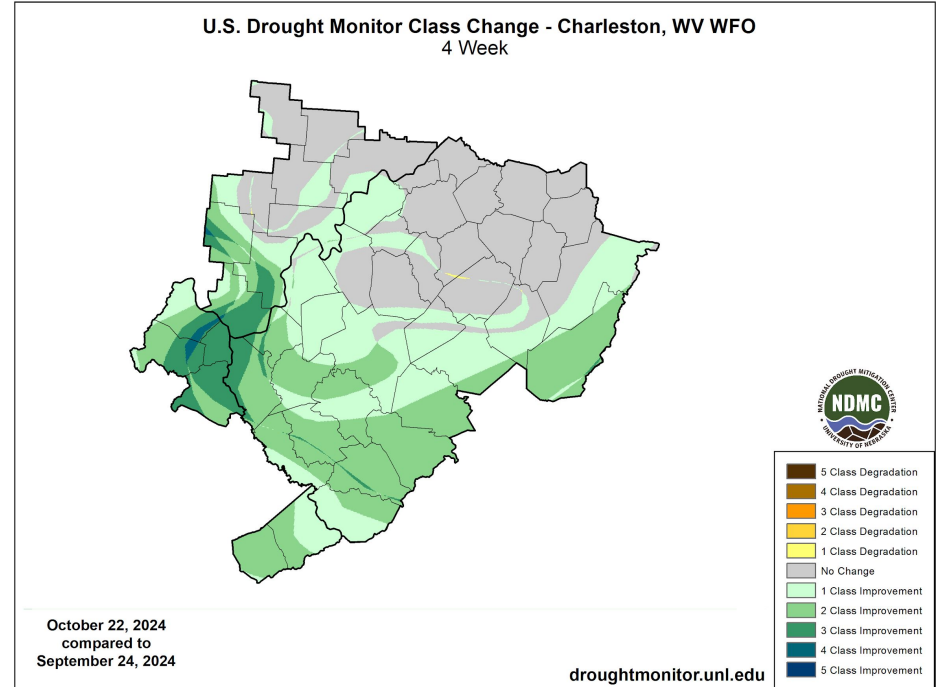


Image Caption: Right: [U.S. Drought Monitor 4 week change valid 8am EDT October 24, 2024](https://droughtmonitor.unl.edu)





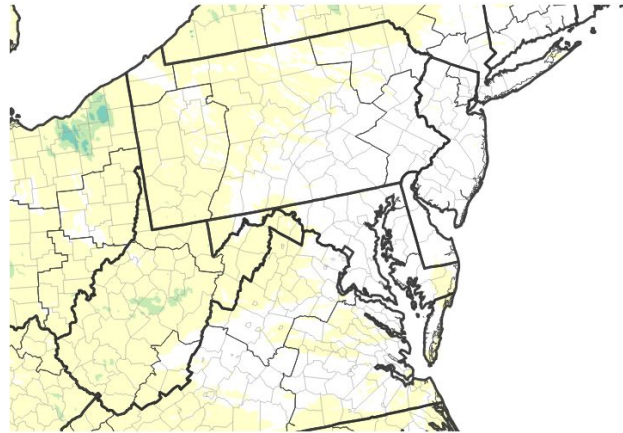
# Observed Precipitation

## Latest 7 Rainfall and 30-Day Percent of Normal Rainfall

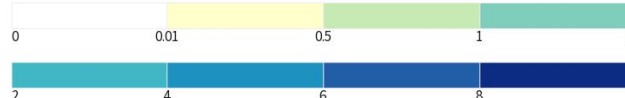
### Main Takeaways

- Some very light rain amounts across the central lowlands and northeast mountains
- Rainfall surplus lingers in the long term across WV Coal Fields and mountains from remnants of Helene
  - Will drop from the 30 day tally next week
- Significant long term rainfall deficits continue across northern WV lowlands and southeast OH

7-Day Precipitation Accumulations (Inches)

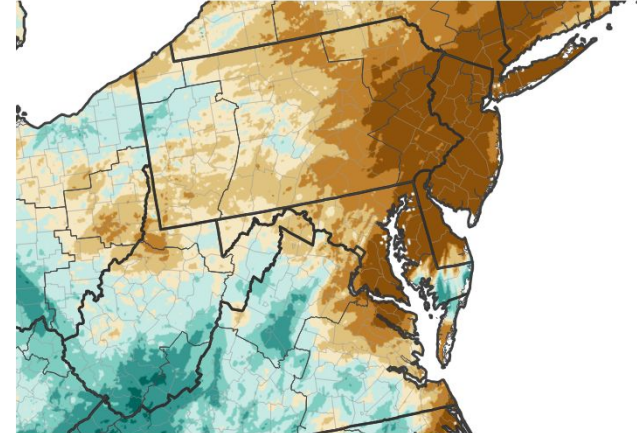


Inches of Precipitation

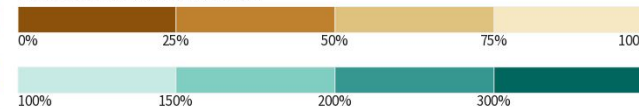


Source(s): National Weather Service Multi-Radar Multi-Sensor System; image courtesy of Drought.gov Last Updated: 10/24/24

30-Day Percent of Normal Precipitation



Percent of Normal Precipitation (%)



Source(s): National Weather Service Multi-Radar Multi-Sensor System; image courtesy of Drought.gov Last Updated: 10/24/24

### Image Caption:

Left - 7 Day Precipitation Amount for Mid Atlantic  
Right - 30 Day Percent of Normal Precipitation for Mid Atlantic  
Data Courtesy NWS National Water Prediction Service ending October 24, 2024





# Summary of Impacts

Links: See/submit [Condition Monitoring Observer Reports \(CMOR\)](#) and view the [Drought Impacts Reporter](#)

## Hydrologic Impacts

- 7-day average streamflows well below normal in southeast OH and western WV
- Water levels in residential and agricultural wells may drop again absent precipitation over the next few weeks

## Agricultural Impacts

- Near surface soil moisture normal southwest VA, northeast KY, southern and eastern WV, below normal elsewhere
  - Dry signal persists in deeper soil profiles
- Hay shortage remains with supplemental feeding needed for winter

## Fire Hazard Impacts

- Fire danger increases Friday and again early next week
  - Expected to remain elevated with overall dry pattern and leaf drop over the next two weeks.

## Mitigation Actions

- Improved impacts overall including water supply and water quality across northeast KY and southern/eastern WV







# Hydrologic Conditions and Impacts

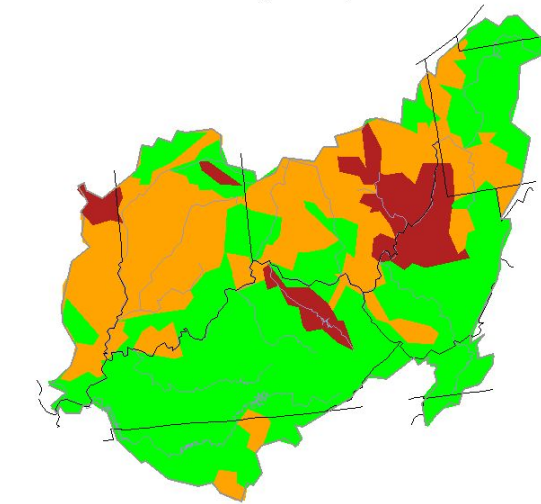
## Main Takeaways

- Streamflows dropping once again outside of the mountains
- Streamflow is typically lowest this time of year
  - Much below normal in the Hocking, Muskingum, lower Little Kanawha, and Upper Ohio basins
- Groundwater wells remain low many locales

## Impacts

- Most reservoir lakes releases for winter drawdown delayed until mid December due to the extraordinary low summer pools

Wednesday, October 23, 2024



Explanation - Percentile classes							
Low	<10 Much below normal	10-24 Below normal	25-75 Normal	76-90 Above normal	>90 Much above normal	High	Not-ranked



VA and WV Groundwater Levels and Trends

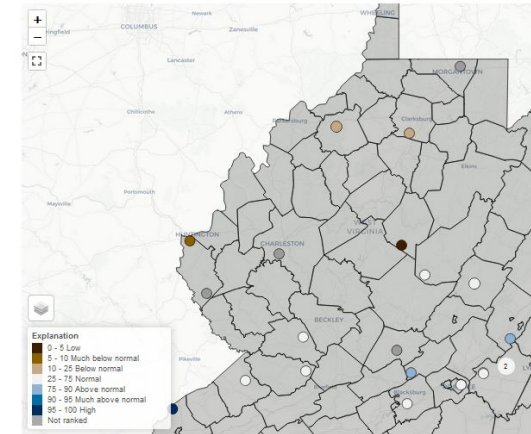


Image Caption:

Left - USGS 7 day average streamflow HUC maps valid October 24, 2024  
Right - USGS groundwater wells valid October 23, 2024





# Agricultural Impacts

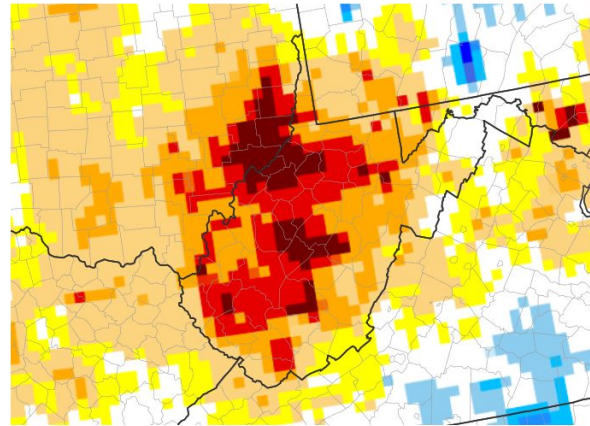
## Main Takeaways

- Soil moisture near normal outside of southeast OH and lowlands of WV, though deeper profiles exhibit a lingering dry signal across most areas outside of the mountains

## Impacts

- Hay shortage remains with supplemental feeding needed for winter

GRACE Root Zone Soil Moisture Percentile

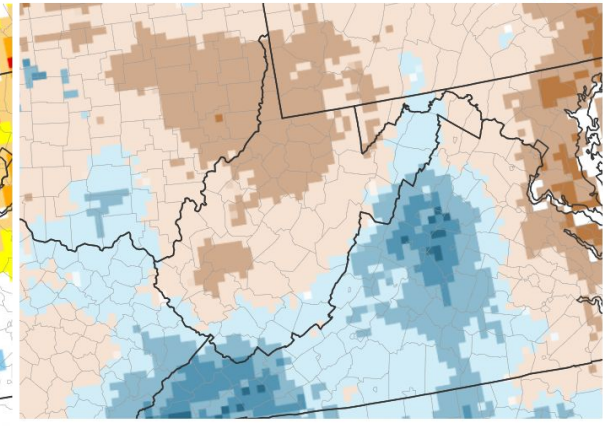


Root Zone Soil Moisture: Wetness Percentile

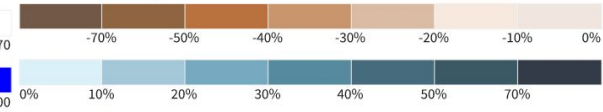


Source(s): NASA, National Drought Mitigation Center  
Data Valid: 10/17/24

Crop-CASMA Subsoil (3 Feet) Soil Moisture Anomaly



Soil Moisture Anomaly



Source(s): NASA  
Data Valid: 10/19/24

Drought.gov

Drought.gov

## USDA Crop Progress and Condition Weekly Reports

[West Virginia](#)  
[Virginia](#)

[Ohio](#)  
[Kentucky](#)

## Image Captions:

Left: GRACE root zone soil moisture percentile valid October 17, 2024

Right: CASMA subsoil moisture percentile valid October 19, 2024



National Oceanic and  
Atmospheric Administration  
U.S. Department of Commerce

National Weather Service  
Charleston, WV



# Fire Hazard Impacts

Link to [Wildfire Potential Outlooks from the National Interagency Coordination Center](#).

## Main Takeaways

- Fuels are drying out once again
  - Increasing brush fire threat Friday and again early next week with warming afternoon temperatures and low relative humidity
    - Mitigated somewhat by lack of wind
- Significant wildfire outlook is normal for October

## Impacts

- Expect fire danger to remain elevated at times over the next two weeks due to leaf drop and overall dry weather pattern
  - Amplified during warm days with wind and low relative humidity

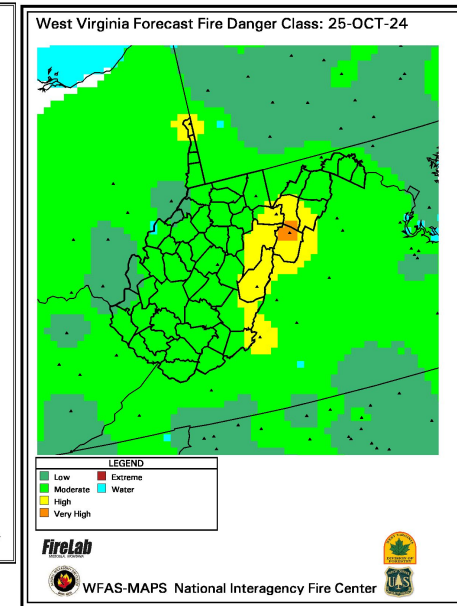
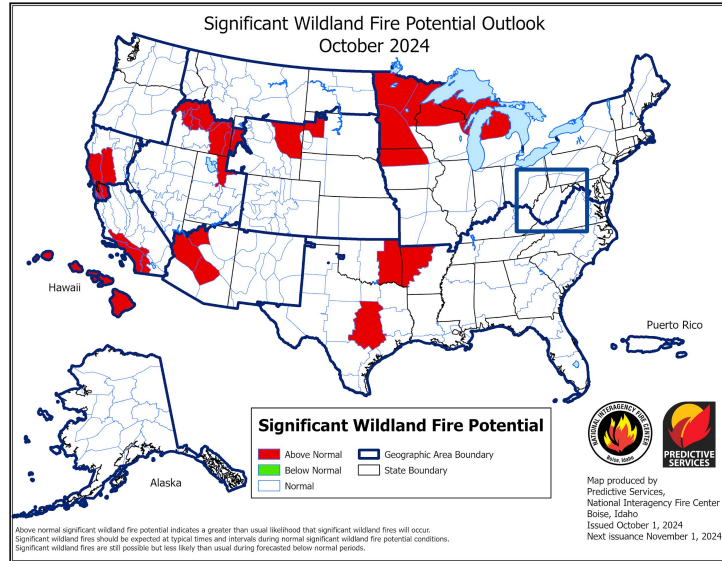


Image Captions:  
 Left: Significant Wildland Fire Potential monthly outlook valid October, 2024  
 Right: Area fire danger class, valid October 25, 2024





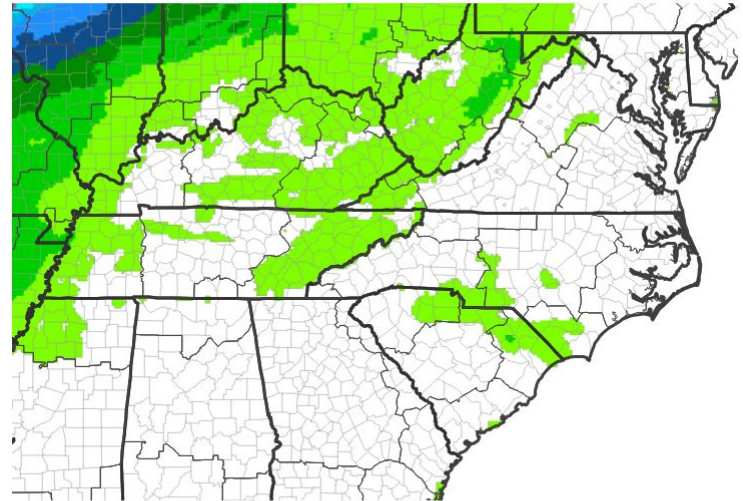


# Seven Day Precipitation Forecast

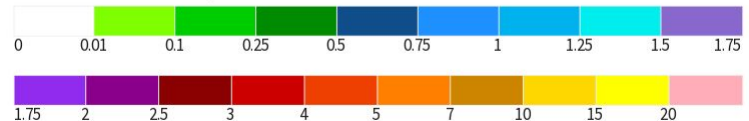
## Next 7 days:

- High pressure and dry weather over the next week, interrupted briefly by a moisture starved cold front Friday night
- After a brief chill this weekend, temperatures will return to above normal next week, though mornings will remain a bit chilly initially.

7-Day Quantitative Precipitation Forecast for October 24, 2024–October 31, 2024



Predicted Inches of Precipitation



Source(s): National Weather Service Weather Prediction Center; image courtesy of Drought.gov

Last Updated: 10/24/24

### Image Caption:

Weather Prediction Center 7-day precipitation forecast valid October 24, 2024





# 8-14 Day Outlook

## Temperature and Precipitation Outlook

### Main Takeaways

- Above normal temperatures favored
- Near normal precipitation favored

### Impacts

- Brush fire threat remains elevated

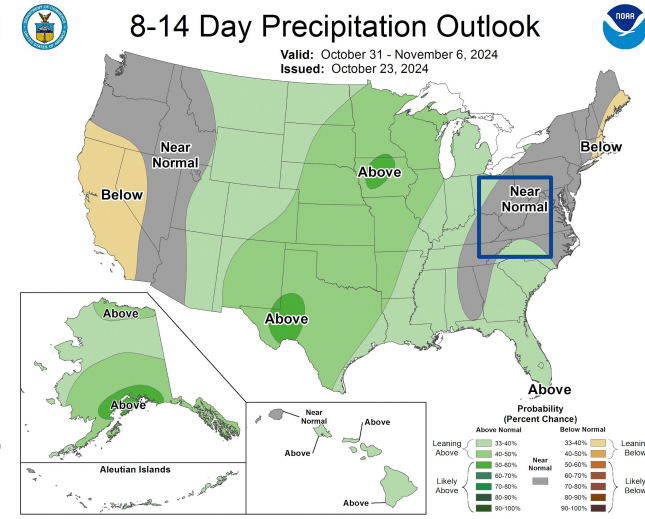
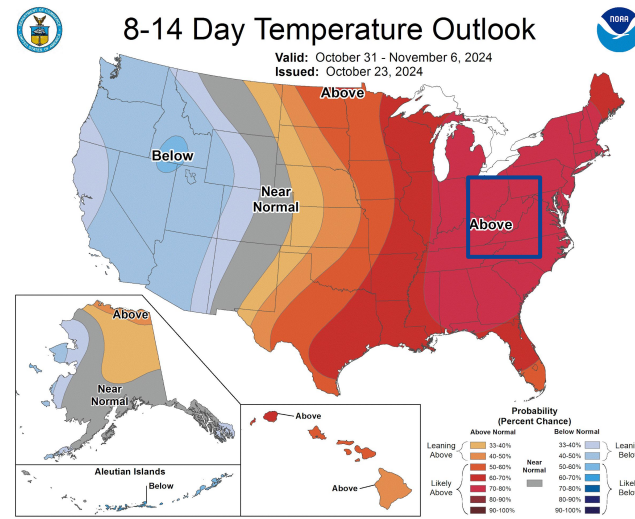


Image Captions: Climate Prediction Center 8-14 day temperature and precipitation outlook valid October 23, 2024



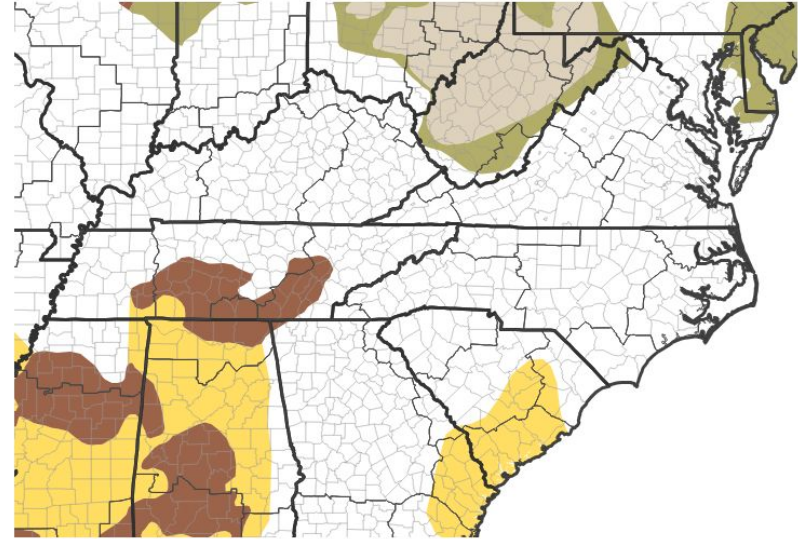
# Seasonal (3-Month) Drought Outlook

The latest monthly and seasonal outlooks can be found on the [CPC homepage](#)

## Main Takeaways

- Updated outlook favors drought remaining but improving through January across WV lowlands and southeast OH but ends elsewhere

## Seasonal (3-Month) Drought Outlook for October 17, 2024–January 31, 2025



### Drought Is Predicted To...



Source(s): Climate Prediction Center; image courtesy of Drought.gov

Last Updated: 10/17/24

**Image Caption:**  
Climate Prediction Center Seasonal Drought Outlook Released October 17, 2024  
Valid October 17, 2024 - January 31, 2024

