

Drought Information Statement for Western & Central Wyoming

Valid June, 07, 2024

Issued By: WFO Riverton, WY

Contact Information:

- This product will be updated by June 28, 2024, or sooner if drought conditions change significantly.
- Please see all currently available products at <https://drought.gov/drought-information-statements>.
- Please visit <https://www.weather.gov/riw/DroughtInformationStatement> for previous statements.
- Please visit <https://www.drought.gov/drought-status-updates> for regional drought status updates.

- Moderate (D1) drought conditions continue across northwestern Wyoming.
- Drought conditions have improved across parts of Natrona and Johnson Counties, especially in the higher elevations of the Bighorn Mountains.

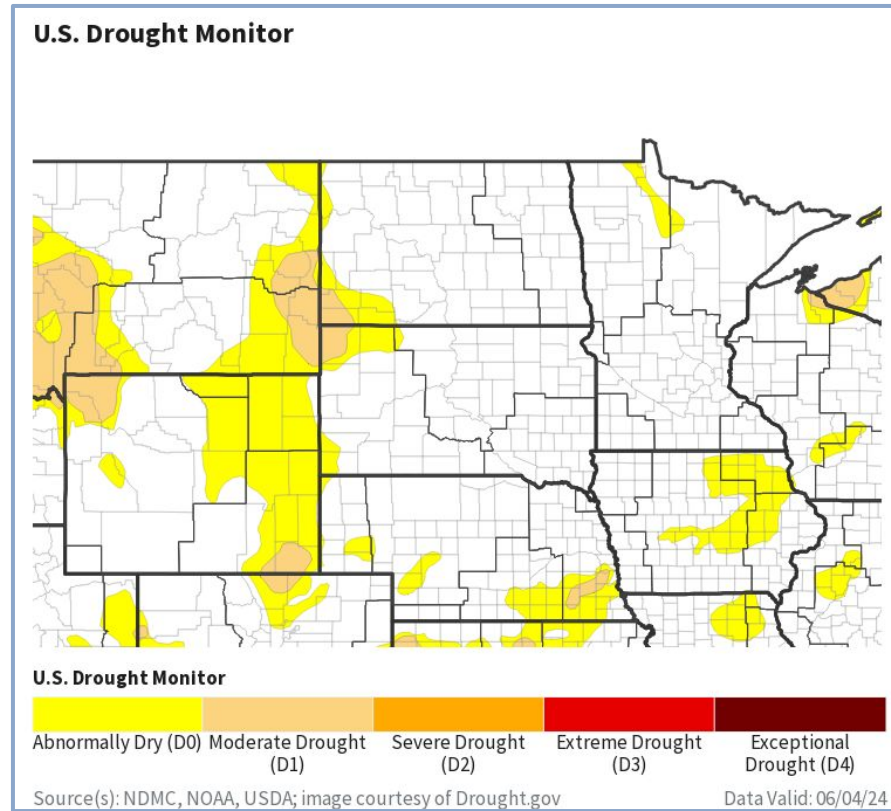




U.S. Drought Monitor

Link to the [latest U.S. Drought Monitor](#) for Wyoming

- Drought intensity and Extent
 - **D4 (Exceptional Drought):** None occurring
 - **D3 (Extreme Drought):** None occurring
 - **D2 (Severe Drought):** None occurring
 - **D1 (Moderate Drought):** Far northwestern WY, in parts of western Park and northern Teton Counties.
 - **D0: (Abnormally Dry):** Parts of Teton and Park Counties, northeast Sublette into the high elevations of the Wind River Range in Fremont County. Also most of Johnson and Natrona Counties.





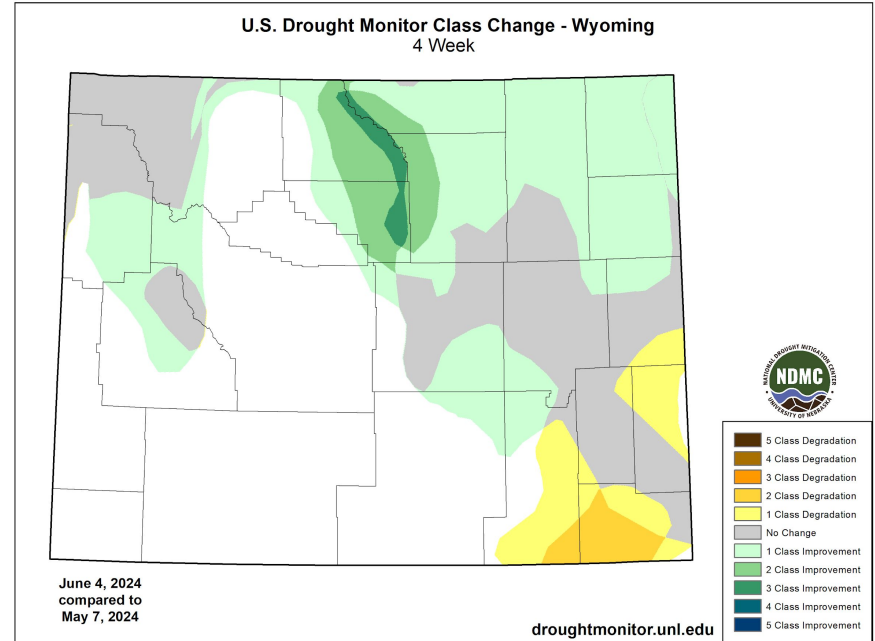
Recent Change in Drought Intensity

Link to the latest [4-week change map](#) for Wyoming

● Four Week Drought Monitor Class Change

- **Drought Worsened:** No areas
- **No Change:** Parts of Teton, Park, Natrona, Johnson, and Sublette Counties, as well as a small part of Fremont County.
- **Drought Improved:** Significant improvements across the Bighorn Mountains. Improvements were also seen in parts of Park, Teton, Fremont, Sublette, Natrona, Johnson, Washakie, and Big Horn Counties.

- **Frequent convective showers and thunderstorms** helped provide needed precipitation to the Bighorn Mountains and adjacent areas during the second half of May.



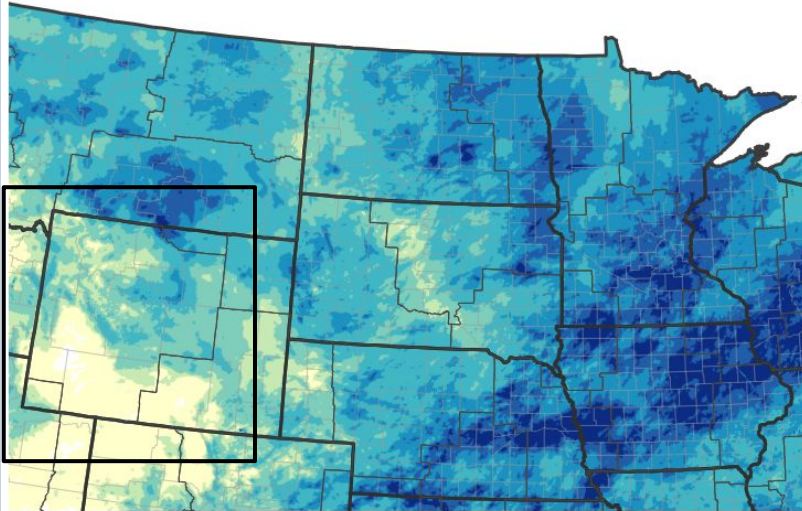


Precipitation

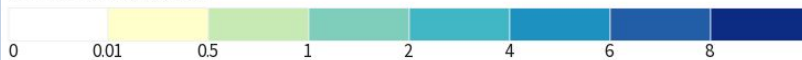
Areas west of the Continental Divide and in parts of central Wyoming had below normal precipitation over the past 30 days.

Above normal precipitation was mainly focused over the Bighorn Basin and the Bighorn Mountains.

30-Day Precipitation Accumulations (Inches)



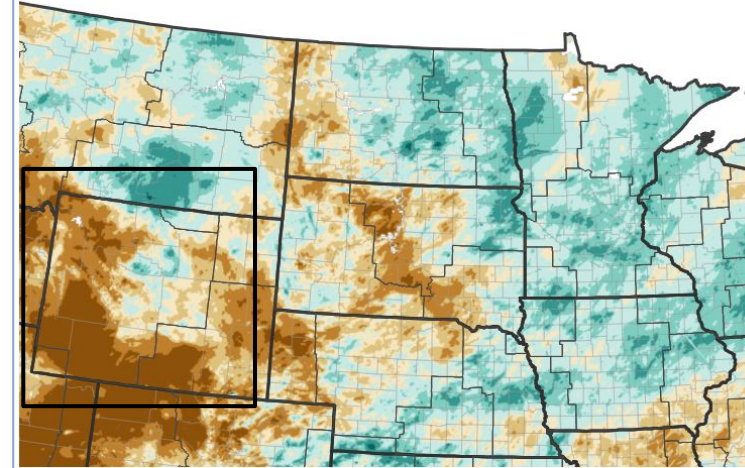
Inches of Precipitation



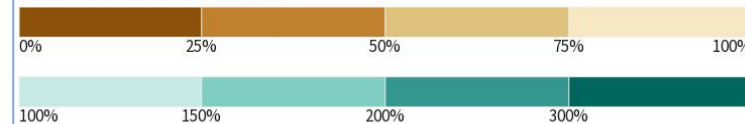
Source(s): National Weather Service Multi-Radar Multi-Sensor System; image courtesy of Drought.gov

Last Updated: 06/07/24

30-Day Percent of Normal Precipitation



Percent of Normal Precipitation (%)



Source(s): National Weather Service Multi-Radar Multi-Sensor System; image courtesy of Drought.gov

Last Updated: 06/07/24



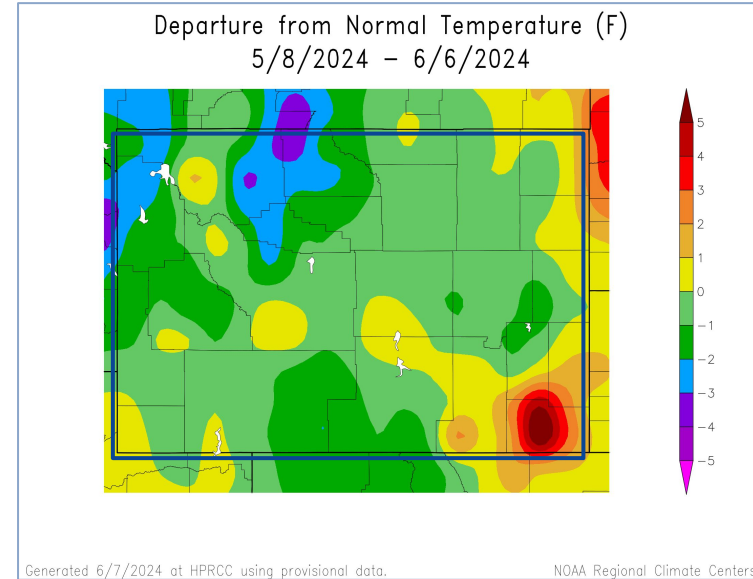
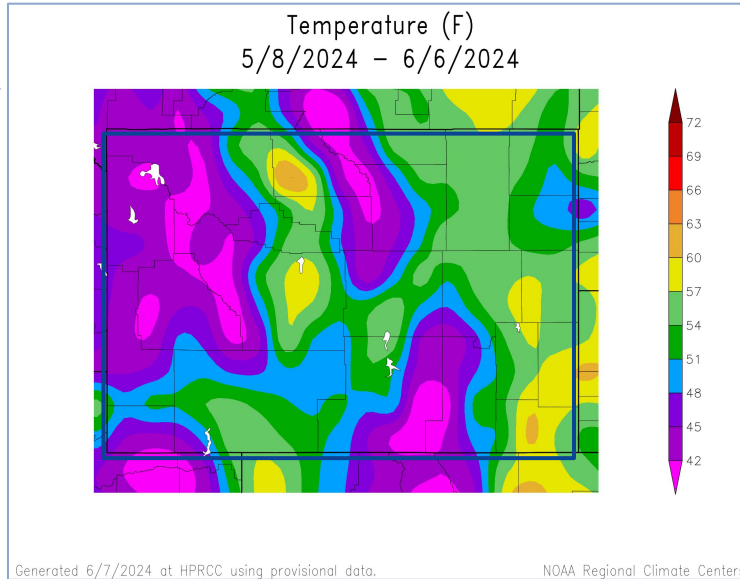


Temperature

Link to [ACIS Climate Maps from the High Plains Regional Climate Center](#)

Much of the region saw around or slightly below normal temperatures the past 30 days

The temperatures most below normal were scattered across the northern Bighorn Basin and in parts of Teton and Park Counties.



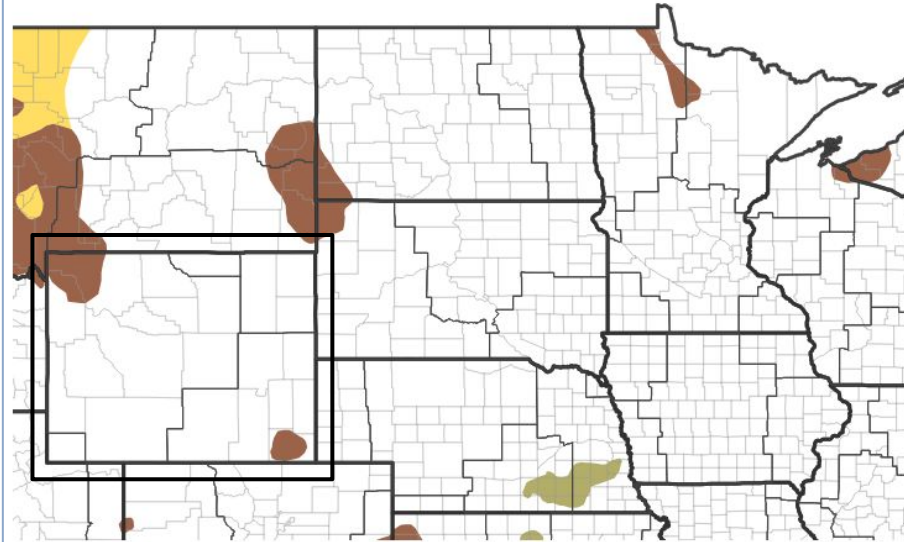


Drought Outlook

The latest monthly and seasonal outlooks can be found on the [CPC homepage](#)

- Drought conditions are expected to continue across the northwestern corner of the state. This includes parts of Park and Teton Counties.

1-Month Drought Outlook



Drought Is Predicted To...



Source(s): Climate Prediction Center; image courtesy of Drought.gov

Data Valid: 05/31/24

Links to the latest:

[Climate Prediction Center Monthly Drought Outlook](#)

[Climate Prediction Center Seasonal Drought Outlook](#)

