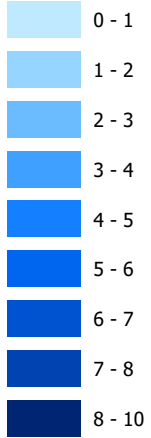


Legend

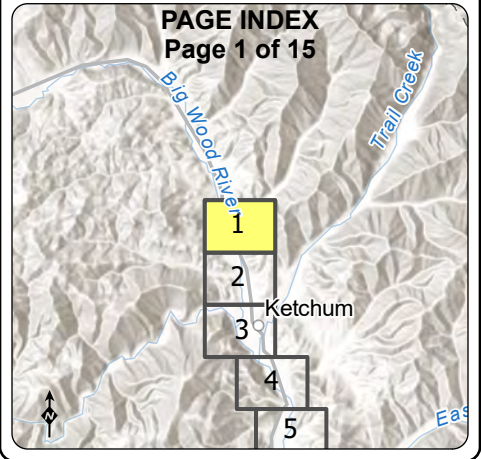
Water Depth, 3760 cfs

Feet



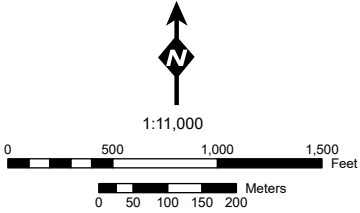
Notes:

- Background imagery: Aerial Imagery of Idaho (2019, 60-cm)
- cfs = cubic feet per second



Big Wood River

Ketchum to Bellevue, ID
River Flow: 3760 cfs



DATE	7/14/2022
DESIGNED	GROETCH, SCHWARZ
DRAWN	OCHS
CHECKED	SCHWARZ

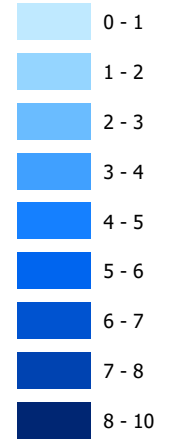




Legend

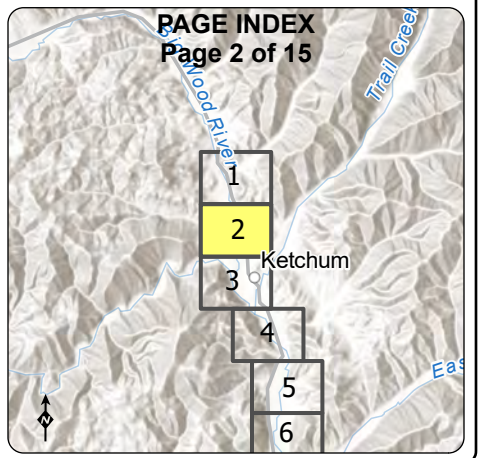
Water Depth, 3760 cfs

Feet



Notes:

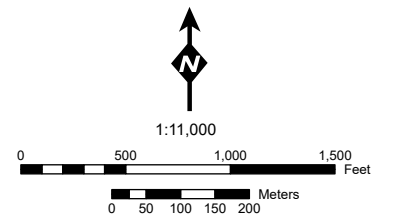
- Background imagery: Aerial Imagery of Idaho (2019, 60-cm)
- cfs = cubic feet per second



Big Wood River

Ketchum to Bellevue, ID

River Flow: 3760 cfs



DATE	7/14/2022
DESIGNED	GROETCH, SCHWARZ
DRAWN	OCHS
CHECKED	SCHWARZ

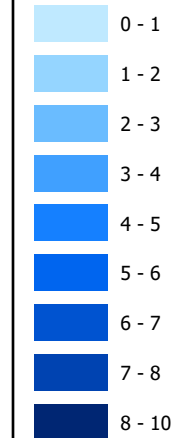




Legend

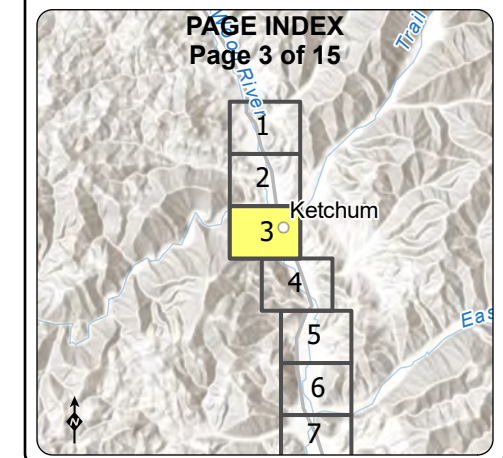
Water Depth, 3760 cfs

Feet



Notes:

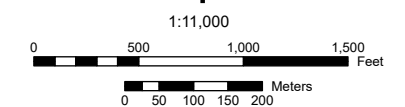
- Background imagery: Aerial Imagery of Idaho (2019, 60-cm)
- cfs = cubic feet per second



Big Wood River

Ketchum to Bellevue, ID

River Flow: 3760 cfs



DATE	7/14/2022
DESIGNED	GROETCH, SCHWARZ
DRAWN	OCHS
CHECKED	SCHWARZ

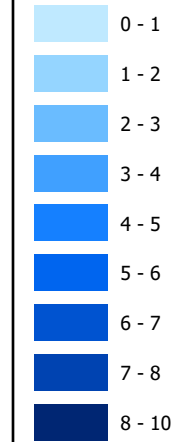




Legend

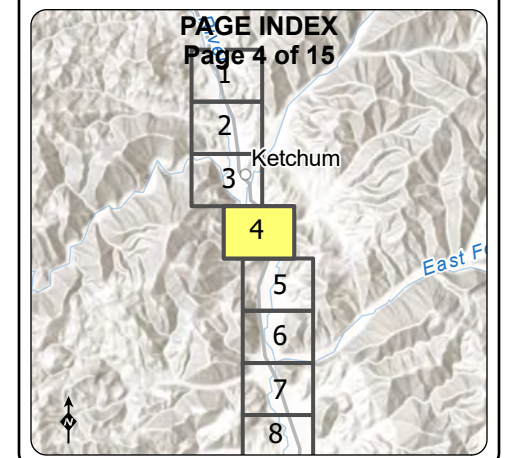
Water Depth, 3760 cfs

Feet



Notes:

- Background imagery: Aerial Imagery of Idaho (2019, 60-cm)
- cfs = cubic feet per second



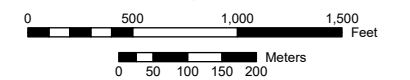
Big Wood River

Ketchum to Bellevue, ID

River Flow: 3760 cfs

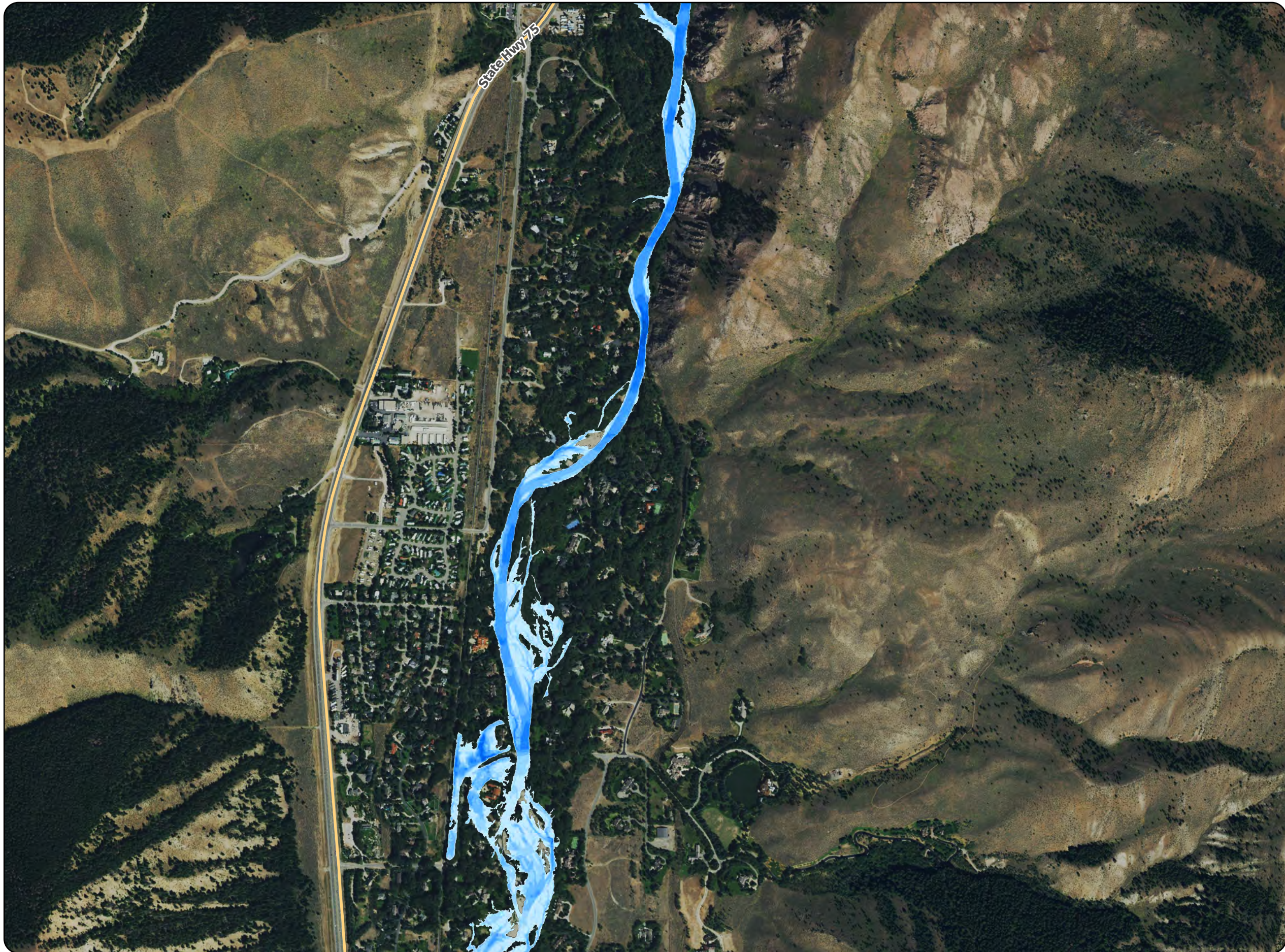


1:11,000



DATE	7/14/2022
DESIGNED	GROETCH, SCHWARZ
DRAWN	OCHS
CHECKED	SCHWARZ

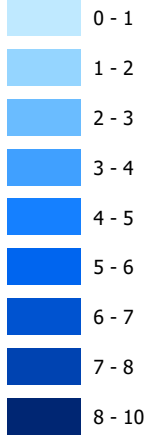




Legend

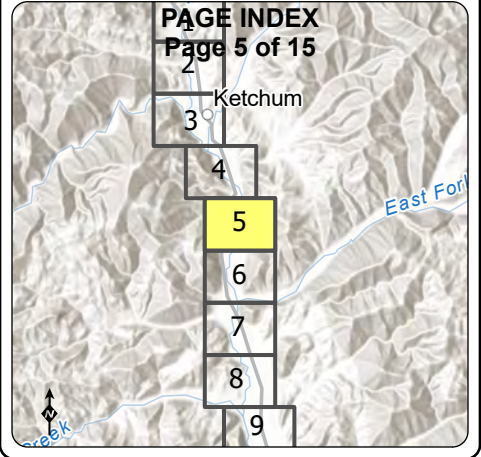
Water Depth, 3760 cfs

Feet



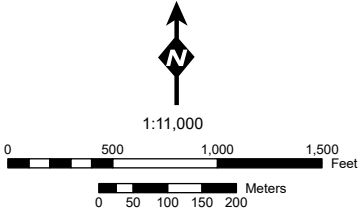
Notes:

- Background imagery: Aerial Imagery of Idaho (2019, 60-cm)
- cfs = cubic feet per second



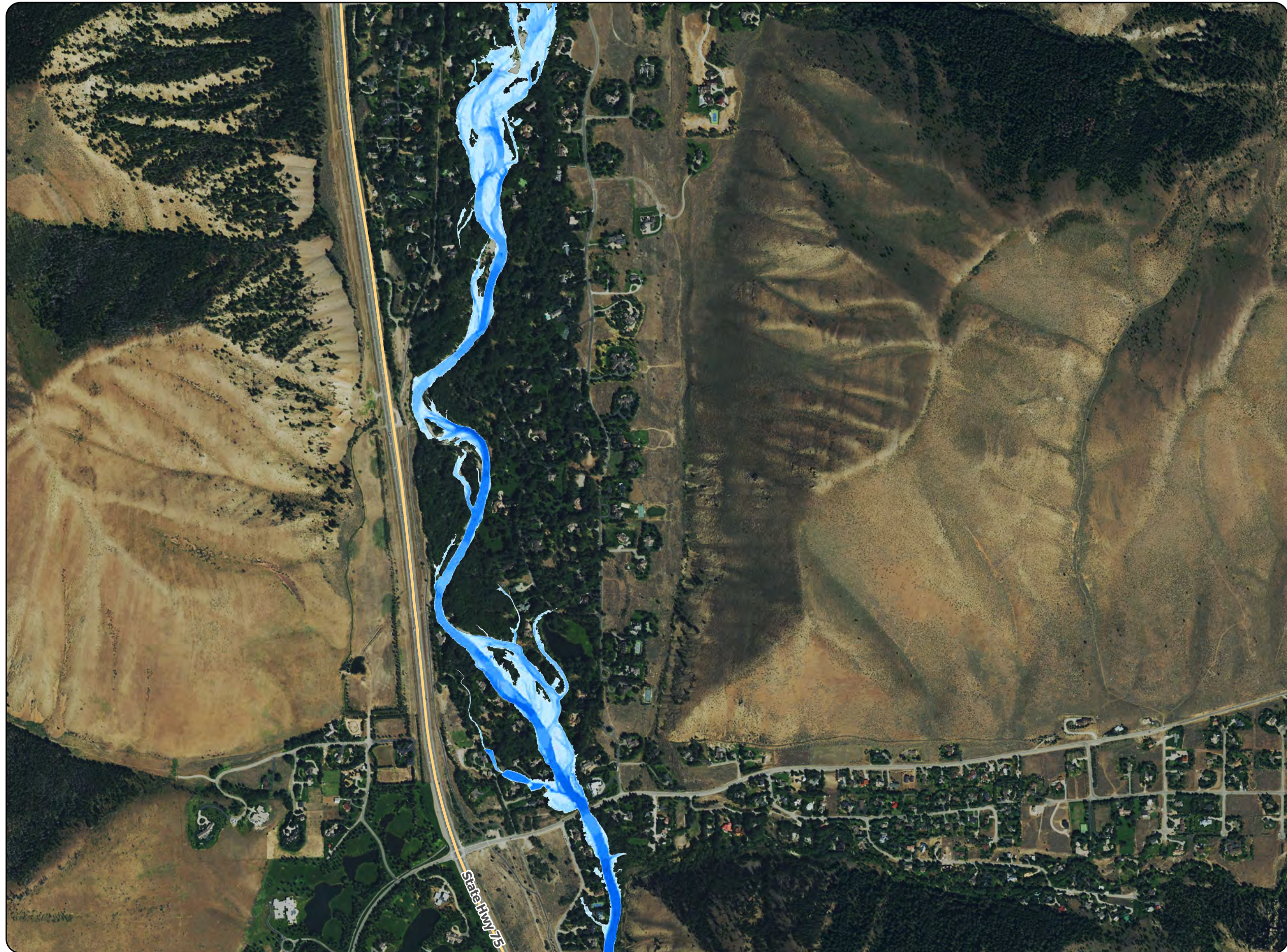
Big Wood River

Ketchum to Bellevue, ID
River Flow: 3760 cfs



DATE	7/14/2022
DESIGNED	GROETCH, SCHWARZ
DRAWN	OCHS
CHECKED	SCHWARZ

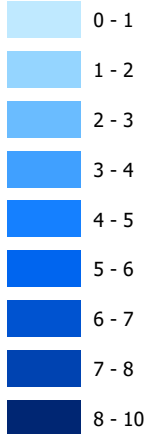




Legend

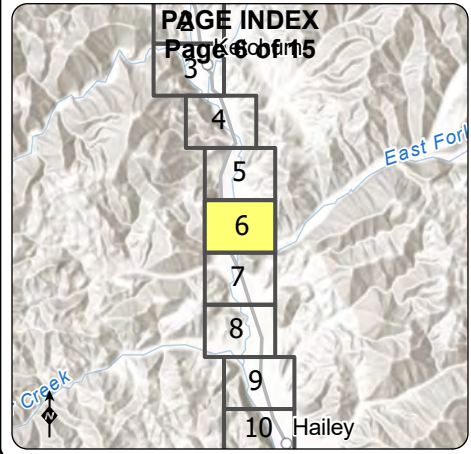
Water Depth, 3760 cfs

Feet



Notes:

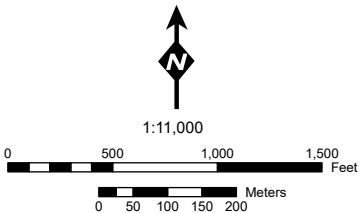
- Background imagery: Aerial Imagery of Idaho (2019, 60-cm)
- cfs = cubic feet per second



Big Wood River

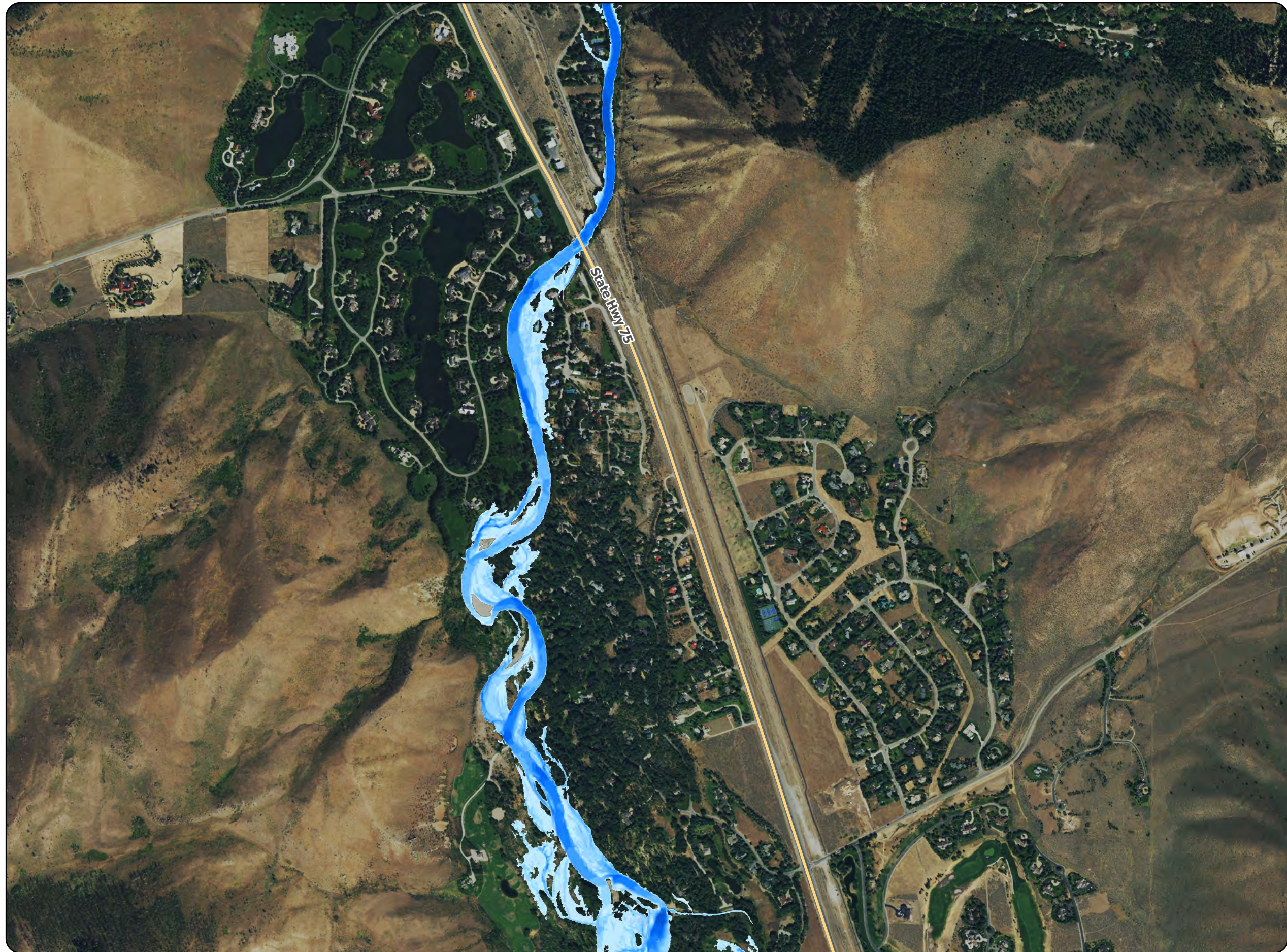
Ketchum to Bellevue, ID

River Flow: 3760 cfs



DATE	7/14/2022
DESIGNED	GROETCH, SCHWARZ
DRAWN	OCHS
CHECKED	SCHWARZ

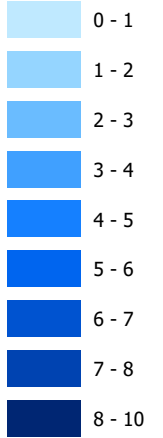




Legend

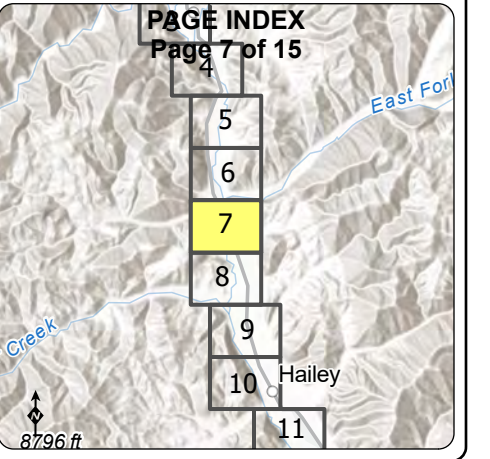
Water Depth, 3760 cfs

Feet



Notes:

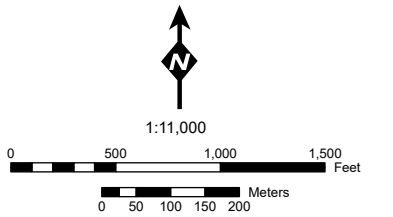
- Background imagery: Aerial Imagery of Idaho (2019, 60-cm)
- cfs = cubic feet per second



Big Wood River

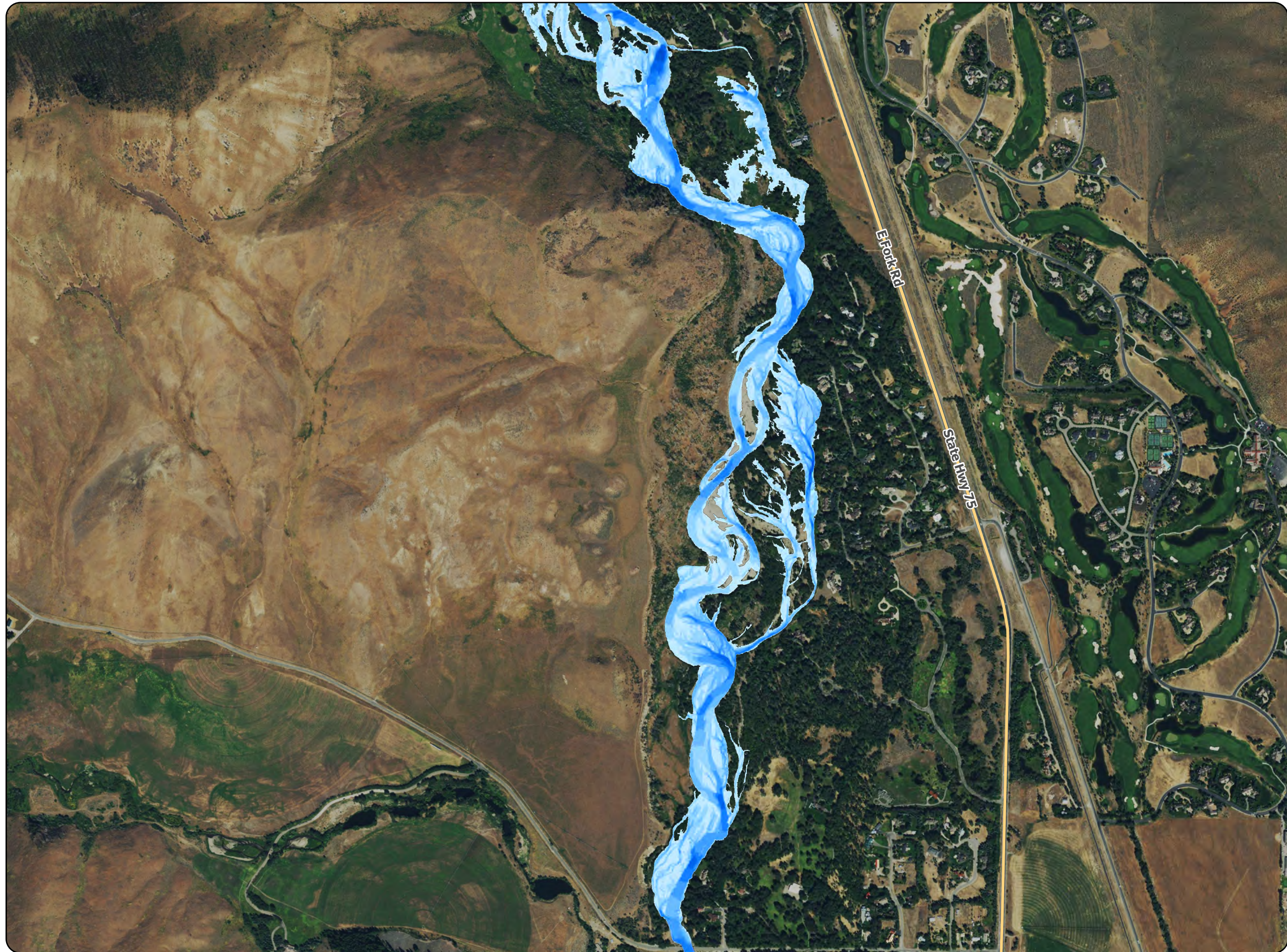
Ketchum to Bellevue, ID

River Flow: 3760 cfs



DATE	7/14/2022
DESIGNED	GROETCH, SCHWARZ
DRAWN	OCHS
CHECKED	SCHWARZ

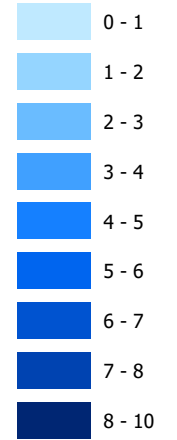




Legend

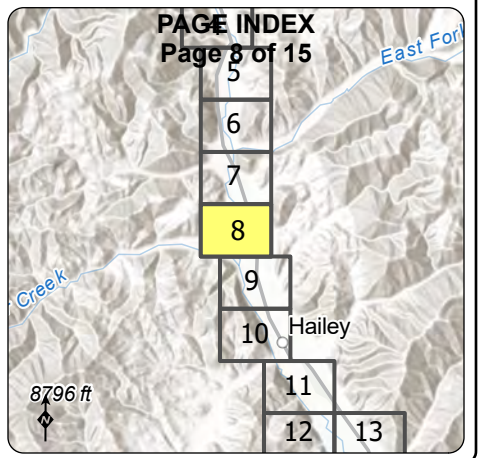
Water Depth, 3760 cfs

Feet



Notes:

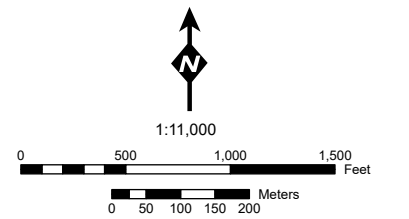
- Background imagery: Aerial Imagery of Idaho (2019, 60-cm)
- cfs = cubic feet per second



Big Wood River

Ketchum to Bellevue, ID

River Flow: 3760 cfs



DATE	7/14/2022
DESIGNED	GROETCH, SCHWARZ
DRAWN	OCHS
CHECKED	SCHWARZ

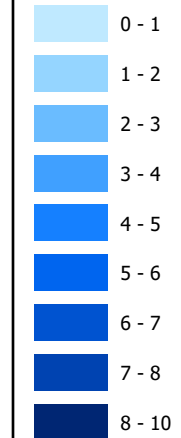




Legend

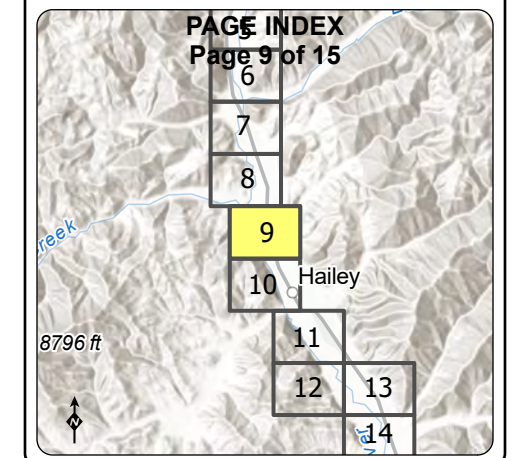
Water Depth, 3760 cfs

Feet



Notes:

- Background imagery: Aerial Imagery of Idaho (2019, 60-cm)
- cfs = cubic feet per second



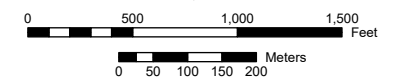
Big Wood River

Ketchum to Bellevue, ID

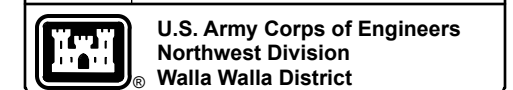
River Flow: 3760 cfs

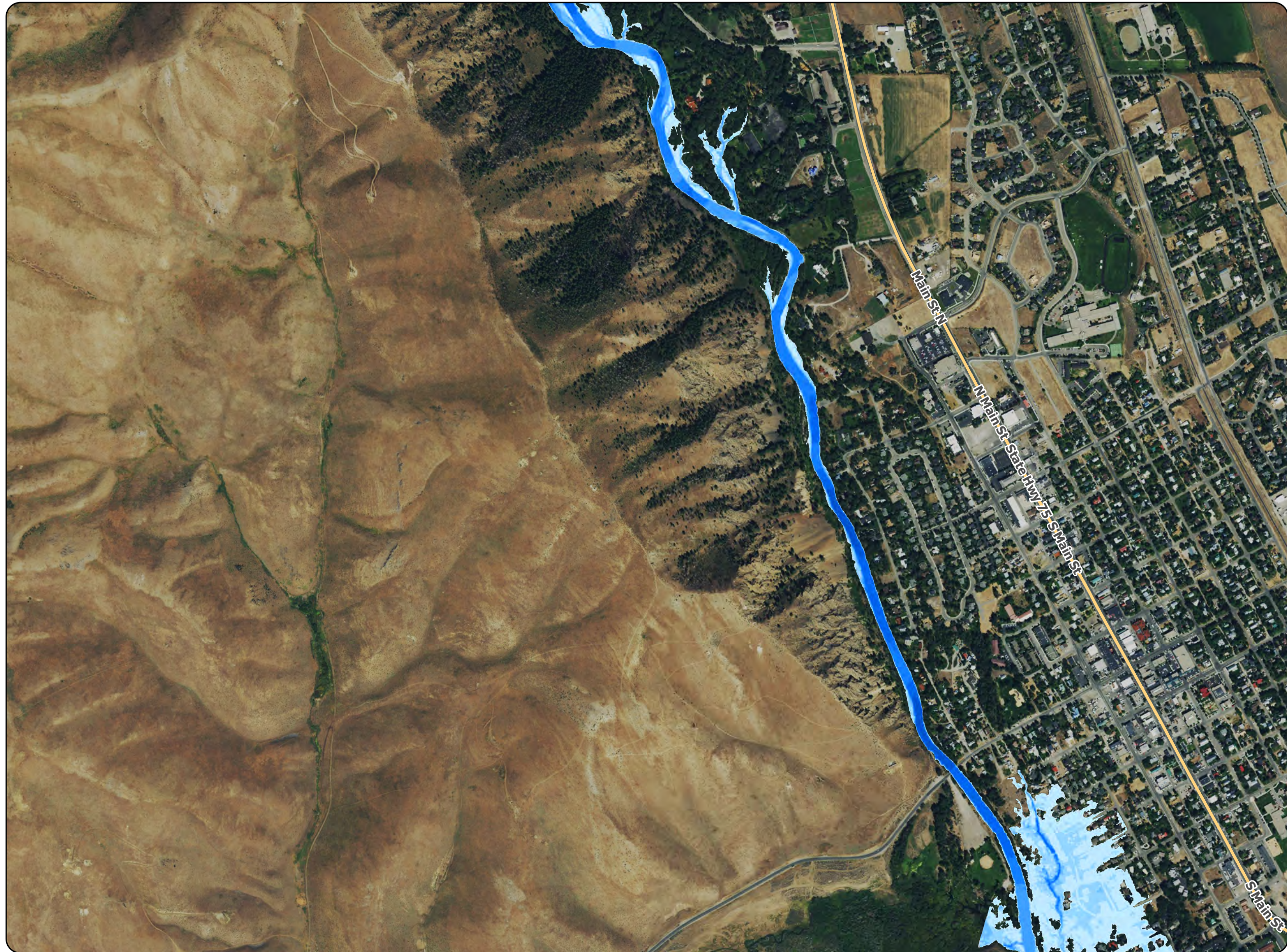


1:11,000



DATE	7/14/2022
DESIGNED	GROETCH, SCHWARZ
DRAWN	OCHS
CHECKED	SCHWARZ

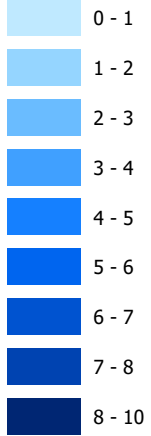




Legend

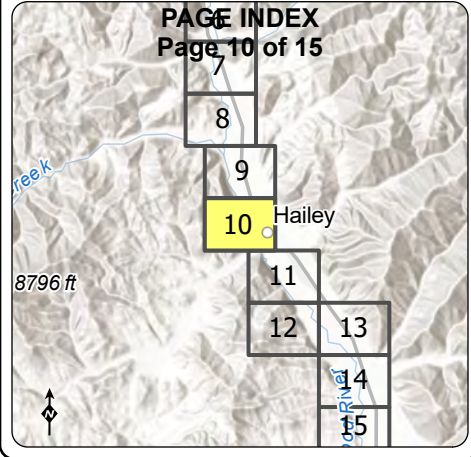
Water Depth, 3760 cfs

Feet



Notes:

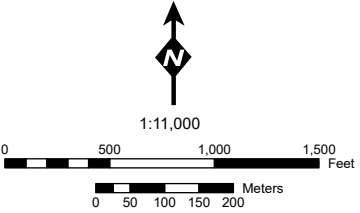
- Background imagery: Aerial Imagery of Idaho (2019, 60-cm)
- cfs = cubic feet per second



Big Wood River

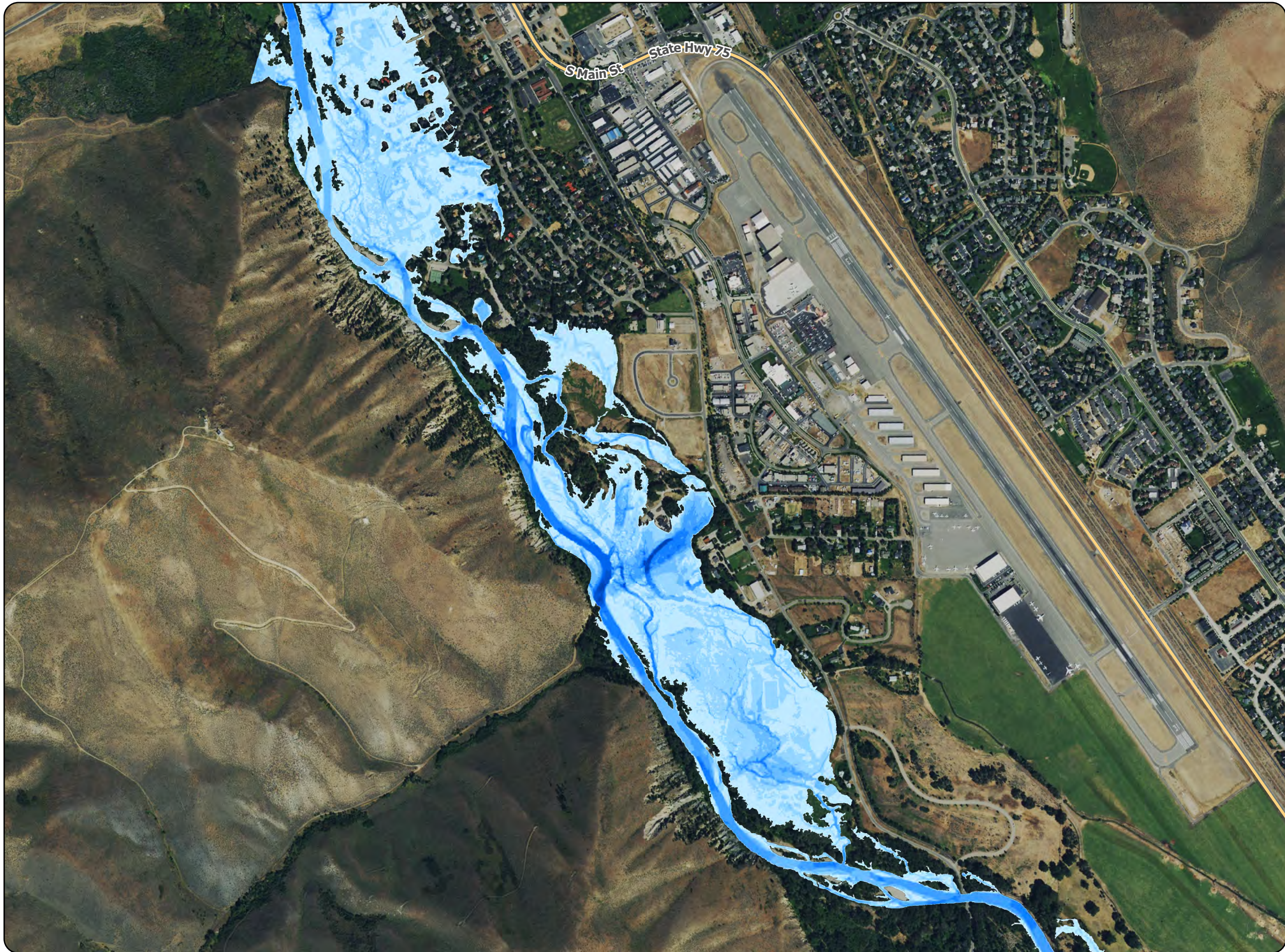
Ketchum to Bellevue, ID

River Flow: 3760 cfs



DATE	7/14/2022
DESIGNED	GROETCH, SCHWARZ
DRAWN	OCHS
CHECKED	SCHWARZ

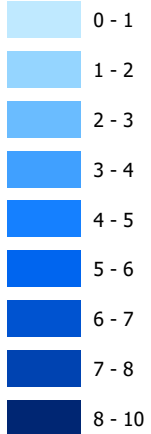




Legend

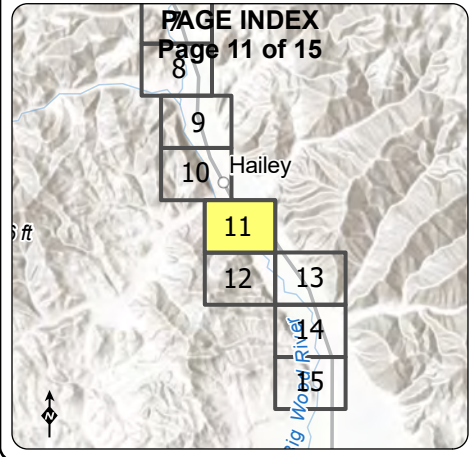
Water Depth, 3760 cfs

Feet



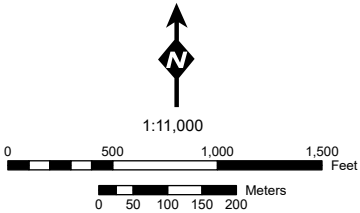
Notes:

- Background imagery: Aerial Imagery of Idaho (2019, 60-cm)
- cfs = cubic feet per second



Big Wood River

Ketchum to Bellevue, ID
River Flow: 3760 cfs



DATE	7/14/2022
DESIGNED	GROETCH, SCHWARZ
DRAWN	OCHS
CHECKED	SCHWARZ

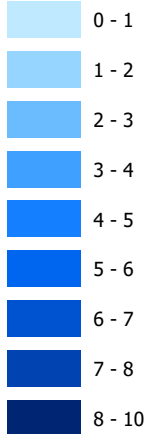




Legend

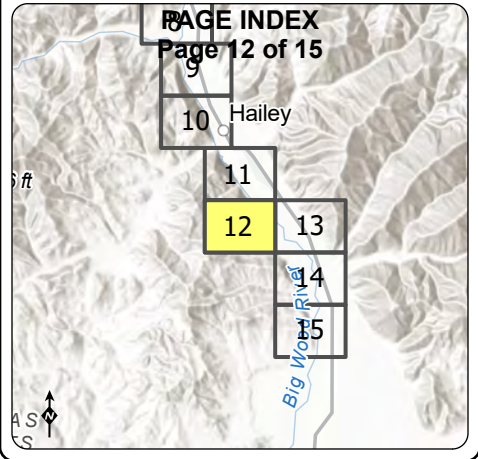
Water Depth, 3760 cfs

Feet



Notes:

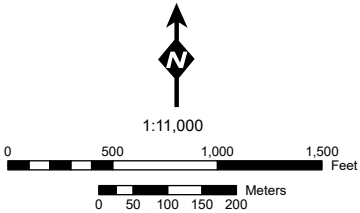
- Background imagery: Aerial Imagery of Idaho (2019, 60-cm)
- cfs = cubic feet per second



Big Wood River

Ketchum to Bellevue, ID

River Flow: 3760 cfs



DATE	7/14/2022
DESIGNED	GROETCH, SCHWARZ
DRAWN	OCHS
CHECKED	SCHWARZ

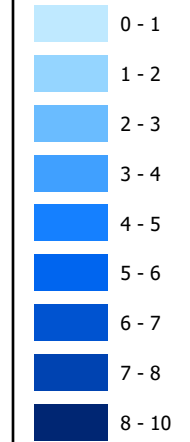




Legend

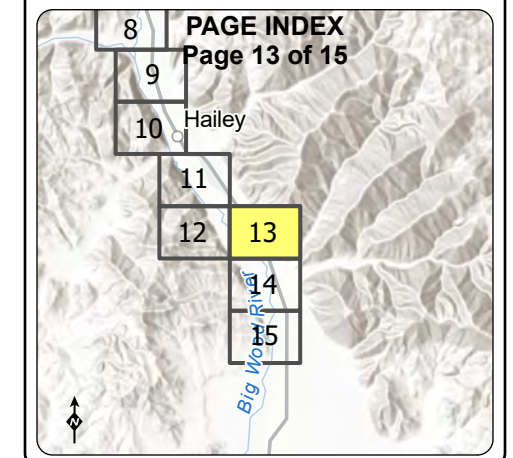
Water Depth, 3760 cfs

Feet



Notes:

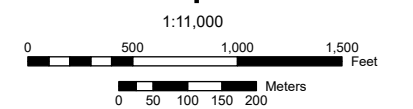
- Background imagery: Aerial Imagery of Idaho (2019, 60-cm)
- cfs = cubic feet per second



Big Wood River

Ketchum to Bellevue, ID

River Flow: 3760 cfs



DATE	7/14/2022
DESIGNED	GROETCH, SCHWARZ
DRAWN	OCHS
CHECKED	SCHWARZ

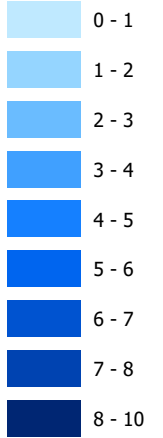




Legend

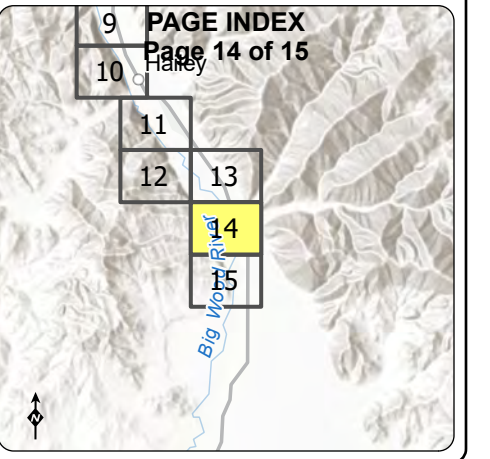
Water Depth, 3760 cfs

Feet



Notes:

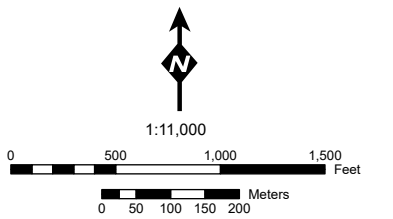
- Background imagery: Aerial Imagery of Idaho (2019, 60-cm)
- cfs = cubic feet per second



Big Wood River

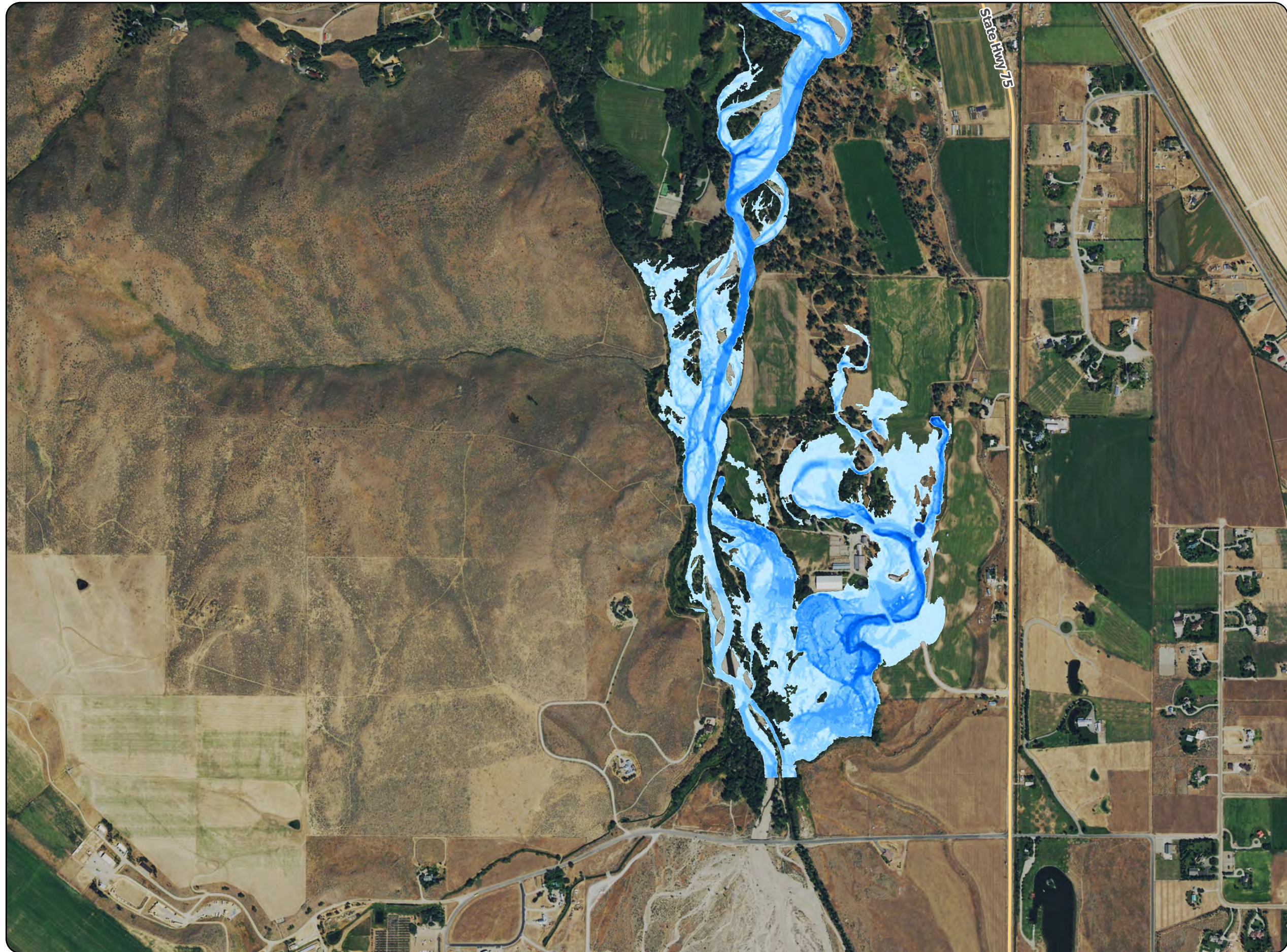
Ketchum to Bellevue, ID

River Flow: 3760 cfs



DATE	7/14/2022
DESIGNED	GROETCH, SCHWARZ
DRAWN	OCHS
CHECKED	SCHWARZ

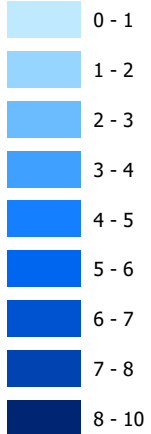




Legend

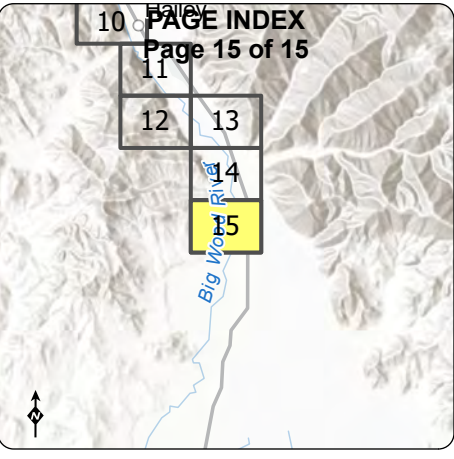
Water Depth, 3760 cfs

Feet



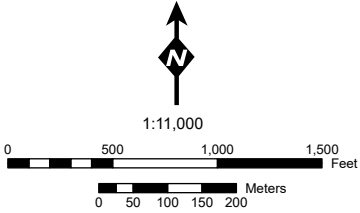
Notes:

- Background imagery: Aerial Imagery of Idaho (2019, 60-cm)
- cfs = cubic feet per second



Big Wood River

Ketchum to Bellevue, ID
River Flow: 3760 cfs



DATE	7/14/2022
DESIGNED	GROETCH, SCHWARZ
DRAWN	OCHS
CHECKED	SCHWARZ

