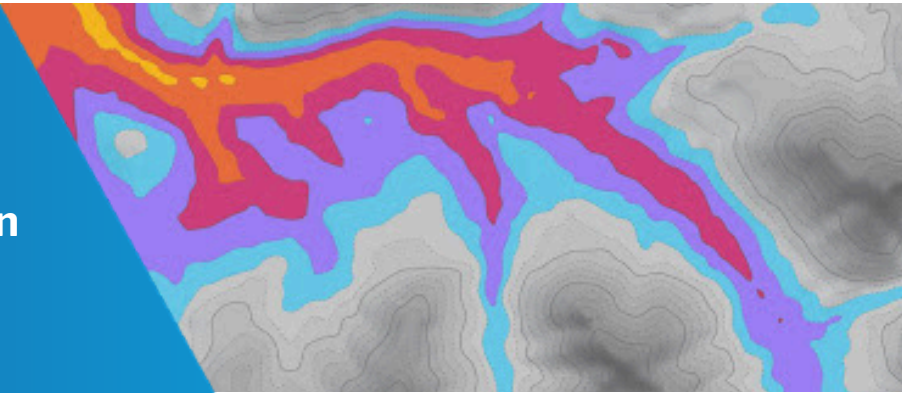




Using Categorical Flood Inundation Mapping on the National Water Prediction Service (NWPS)



“Categorical” FIM (CatFIM) maps are available for select NWS River Forecast Points within the FIM domain on NWPS. CatFIM is a method developed by the National Water Center to create a static (i.e. not event specific) inundation extent mapping library for the official NWS flood stage category thresholds [Action, Minor, Moderate, Major, and Record].

To access CatFIM on NWPS:

1. Choose gauge of choice
2. Click “Full Information” at the top of hydrograph side menu. This will open in a new tab. (Figure 1)
3. Scroll down to the “Gauge Location” section
4. Below the map are several check boxes and an opacity slider. Click “Activate [gauge] CATFIM” box to enable all threshold layers. (Figure 2)
5. Threshold layers can be toggled on/off

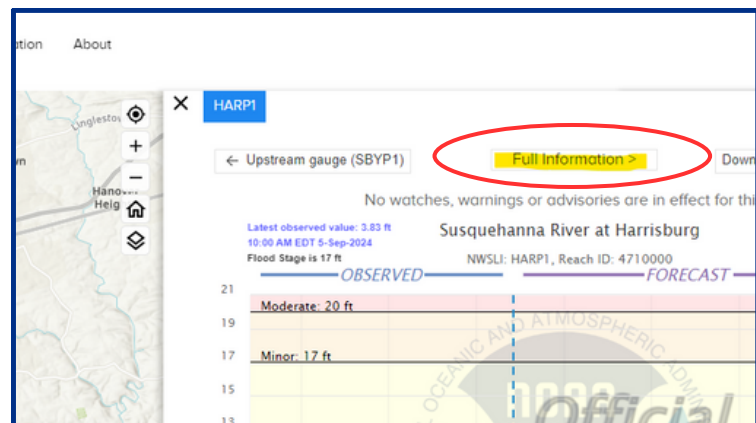


Figure 1: Full Information Button.

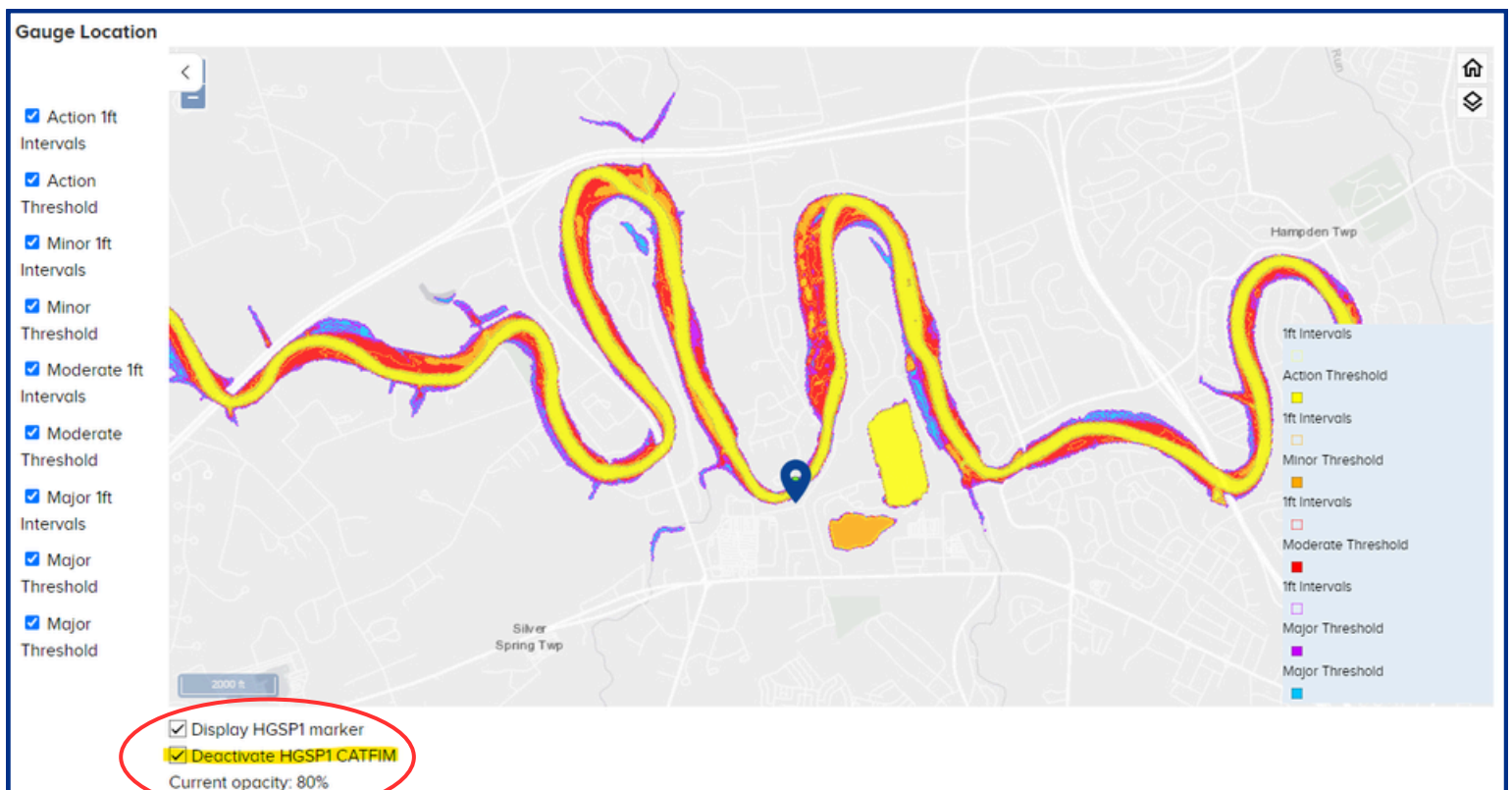


Figure 2: Screenshot of the Gauge Location with CatFIM thresholds enabled.