

# Documentation for check\_extents Script March 2, 2004

## 1.0 General Information

This script allows the user to check the number of extents of various tables in the rfc archive database. One ksh script is provided. The script queries the IBM Informix IDS sysmaster database for the information and pops up an nedit window to allow the user to view the results. This script is new with Build OB4. The file for this script is:

check\_extents (ksh script)

The check\_extents script is intended to be run manually whenever the user feels the need. This script can be run by any user.

## 2.0 Configuration Information

### 2.1 apps\_defaults tokens

Three apps\_defaults tokens are used by this script, these are:

adb_dir	name of the directory where RFC Archive apps and other files are stored on the archive system
adb_server	Informix server name on the archive system
adb_name	name of the RFC Archive database

### 2.2 "housecleaning" requirements

There should not be a need to set up any purging of files. This script creates a single file which is overwritten each time it runs. All temporary files that the script creates are deleted before the script ends.

## 3.0 User How-To

There are two ways the user can run this script; both ways are described below. It doesn't matter which way the user chooses; its basically user preference.

Method 1 is to use the arcmenu program; steps follow..

- 1) open a terminal window
- 2) enter the command xhost +
- 3) login to the ax
- 4) export the display (example: export DISPLAY=lx1-xxx:0.0)
- 5) at the prompt, type arcmenu This will bring up the main menu as shown in Figure 1
- 6) select option "a", the admin menu. This will bring up the admin menu as shown in Figure 2.
- 7) Select option "1" from this menu. This will run the script and pop-up a nedit window for viewing the results.

Method 2 is to run the script from the command line; steps follow.

- 1) open a terminal window
- 2) enter the command xhost +
- 3) login to the ax
- 4) export the display (example: export DISPLAY=lx1-xxx:0.0)
- 5) login to the rax
- 6) at the prompt, type cd /rfc\_arc/scripts/dbadmin
- 7) at the prompt, type check\_extents This will run the script and pop-up a nedit window for viewing the results.

### **Example output file**

The file created by this script can be found in the /rfc\_arc/logs/dbadmin directory and is called extents.list. A portion of this file is shown below.

dbsname	table	extents	total_size
adb_oblkrf	pedcsep	115	19392
adb_oblkrf	crest	36	512
adb_oblkrf	pedfsep	9	432000
adb_oblkrf	counties	9	72
adb_oblkrf	pecrsep	6	360000
adb_oblkrf	peoosep	6	360000
adb_oblkrf	pedrsep	6	360000
adb_oblkrf	unkstnvalue	6	144000
adb_oblkrf	pedrsep_mt	6	48
adb_oblkrf	peoosep_mt	6	48
adb_oblkrf	pedfsep_mt	6	48
adb_oblkrf	aliasid	3	167
adb_oblkrf	rivercrit	3	96
adb_oblkrf	huc8	2	92
adb_oblkrf	huc6	2	20
adb_oblkrf	shefpetrans	2	16
adb_oblkrf	huc4	2	16

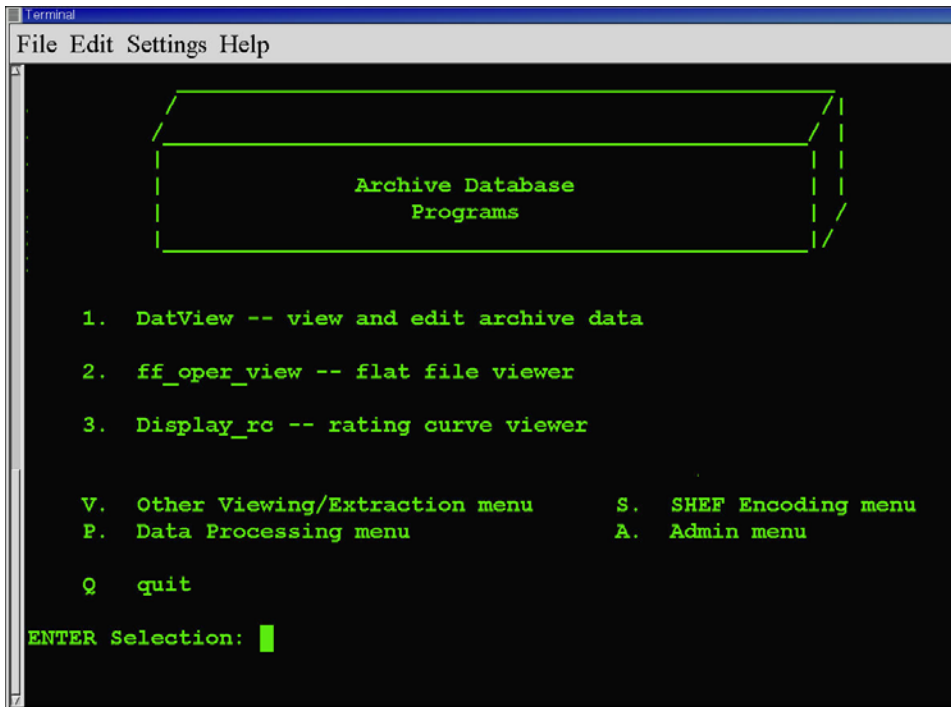


Figure 1. main menu

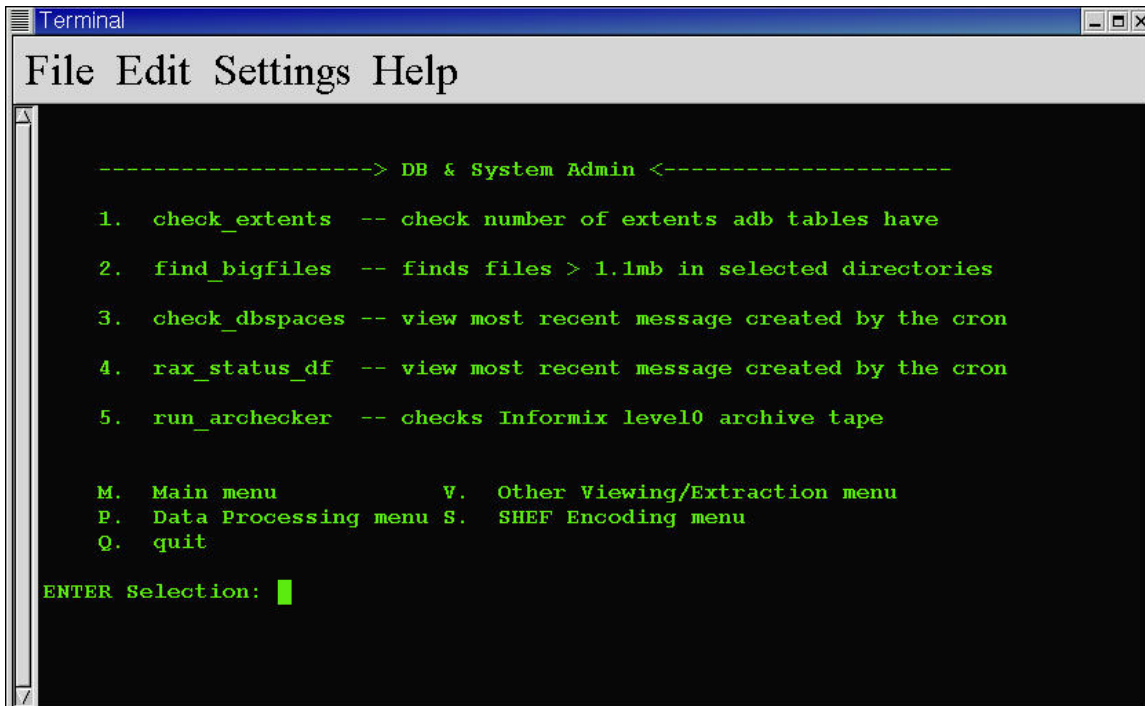


Figure 2. admin menu

## **4.0 Troubleshooting Information**

There shouldn't be any problems with the script itself. The most common problem is the user forgets to export the display so that the nedit window can pop up. If for some reason the query fails, contact RFC Support or refer to the book listed in the reference section.

## **5.0 Maintenance Information**

Originating Programmer/Office: Meyer, A. Juliann  
Missouri Basin River Forecast Center  
Pleasant Hill MO

Ellis, Larry  
North Central River Forecast Center  
Chanhassen MN

Maintenance programmer/Office: Meyer, A. Juliann  
Missouri Basin River Forecast Center  
Pleasant Hill MO

## **6.0 References**

Ron Flannery, "Informix Handbook", Prentice Hall PTR, 2000