

# Documentation for **find\_bigfiles Script** March 2, 2004

## 1.0 General Information

This script uses the Linux find command to find files that are greater than 1.1mb in size and any core files that may exist in the /rfc\_arc directory. One ksh script is provided. The script pops up a nedit window to allow the user to view the results. This script is new with OB4. The file for this script is:

find\_bigfiles (ksh script)

The find\_bigfiles script is intended to be run manually whenever the user feels the need. This script can be run by any user.

## 2.0 Configuration Information

### 2.1 apps\_defaults tokens

One apps\_defaults token is used by this script, it is::

adb\_dir                      name of the directory where RFC Archive apps and other files are stored on the archive system

### 2.2 "housecleaning" requirements

There should not be a need to set up any purging of files. This script creates a single file that is overwritten each time it runs.

## 3.0 User How-To

There are two ways the user can run this script; both ways are described below. It doesn't matter which way the user chooses; its basically user preference. The user will need to coordinate with their rax focal point the deletion of any files.

Method 1 is to use the arcmenu program; steps follow..

- 1) open a terminal window
- 2) enter the command xhost +
- 3) login to the ax
- 4) export the display (export DISPLAY=lx1-xxx:0.0)
- 5) at the prompt, type arcmenu This will bring up the main menu as shown in Figure 1
- 6) select option "a", the admin menu. This will bring up the admin menu as shown in Figure 2.
- 7) Select option "2" from this menu. This will run the script and pop-up a nedit window for viewing the results.

Method 2 is to run the script from the command line; steps follow.

- 1) open a terminal window
- 2) enter the command xhost +
- 3) login to the ax
- 4) export the display (export DISPLAY=lx1-xxx:0.0)
- 5) login to the rax
- 6) at the prompt, type cd /rfc\_arc/scripts/sysadmin
- 7) at the prompt, type find\_bigfiles This will run the script and pop-up a nedit window for viewing the results.

### **Example output file**

The file created by this script can be found in the /rfc\_arc/logs/sysadmin directory and is called.bigfiles.list. A portion of this file is shown below.

Looking for large files in /rfc\_arc.

```
-rwxrwxr-x  1 oper  users  1332788 Jul  3  2003 /rfc_arc/data/nwsrfs/states.20020830
-rwxrwxr-x  1 oper  users  1776118 Jul  3  2003 /rfc_arc/data/testfiles/snonrcs.testfile
-rwxrwxr-x  1 oper  users  1427494 Jul  3  2003 /rfc_arc/docs/datview_documentation.wpd
```

DONE WITH /rfc\_arc.

checking for nohup and core files

```
-rw-----  1 oper  users  11473 Feb 10 04:54 /rfc_arc/bin/nohup.out
```

DONE looking for core and nohup files

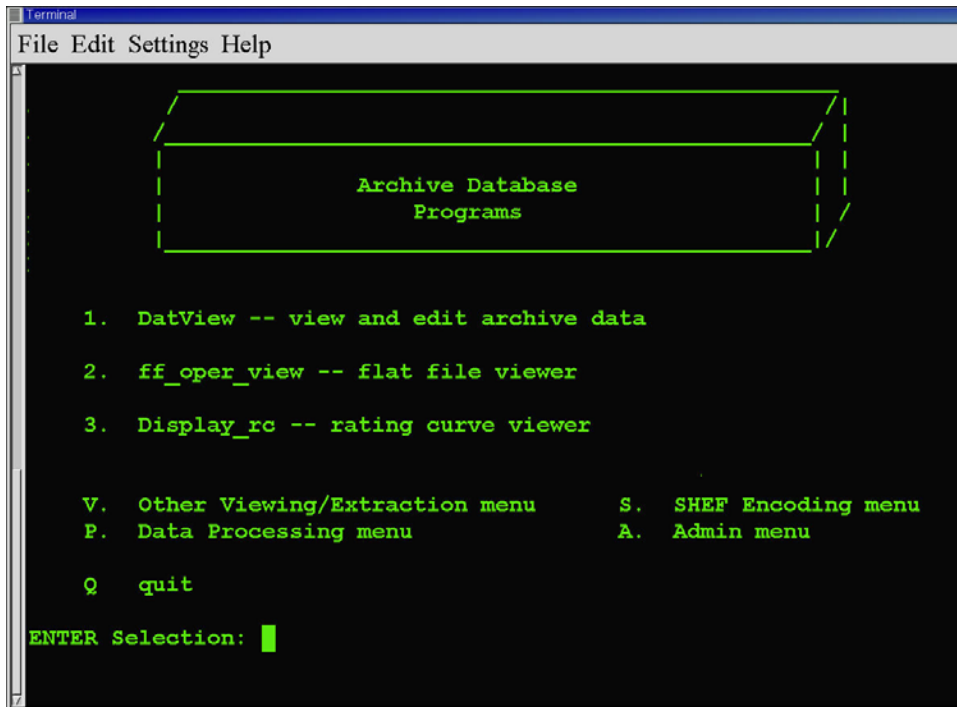


Figure 1. main menu

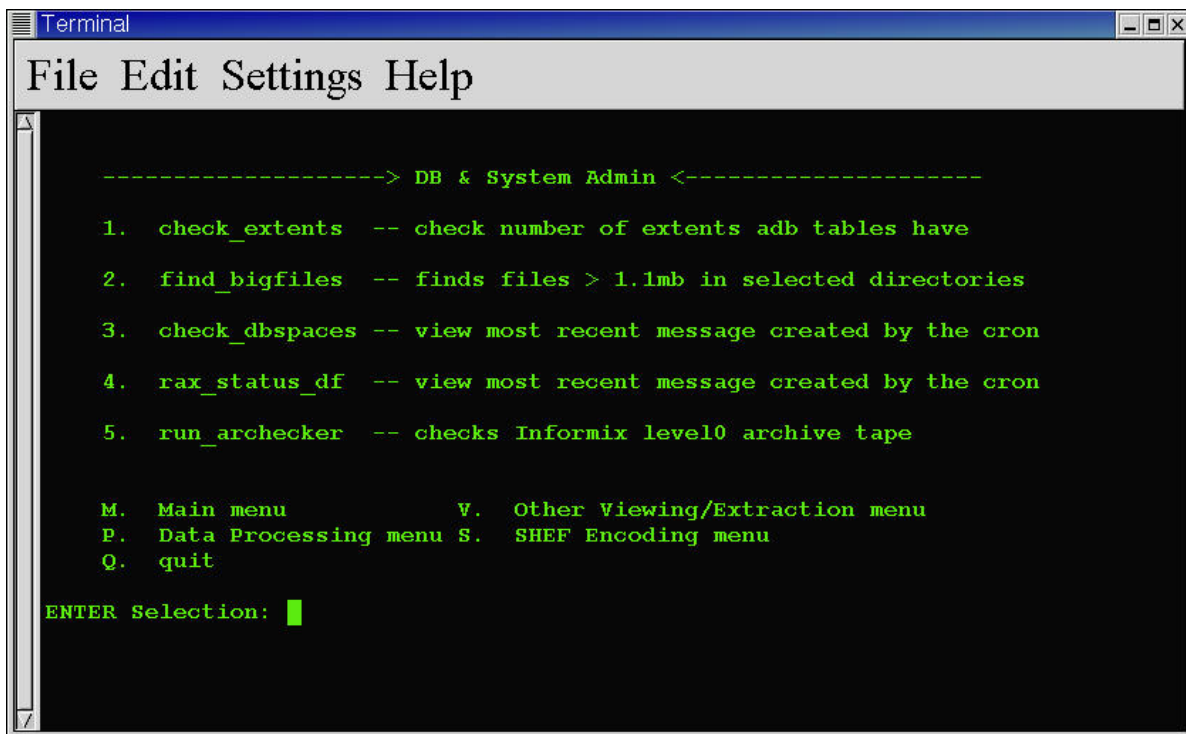


Figure 2. admin menu

## **4.0 Troubleshooting Information**

There shouldn't be any problems with the script itself. The most common problem is the user forgets to export the display so that the nedit window can pop up. If for some reason the script fails, contact RFC Support.

## **5.0 Maintenance Information**

Originating Programmer/Office: Meyer, A. Juliann  
Missouri Basin River Forecast Center  
Pleasant Hill MO

Ellis, Larry  
North Central River Forecast Center  
Chanhassen MN

Maintenance programmer/Office: Meyer, A. Juliann  
Missouri Basin River Forecast Center  
Pleasant Hill MO

## **6.0 References**

Any Red Hat Linux version 7.2 book