

Documentation for run_archecker Script March 16, 2004

1.0 General Information

This script ensures proper user configuration for running the Informix “archecker” executable, which tests and verifies the Informix database backup. One ksh script is provided. This script is new in Build OB4. The file for this script is:

run_archecker (ksh script)

This script is intended to be run manually, after the IBM Informix level 0 archive script is run either by the user or in a cron. This script is run by user “oper”.

2.0 Configuration Information

2.1 Configuration file

One configuration file, defined by the AC_CONFIG variable in the ksh script:

ac_config.adbs	located in /rfc_arc/cfg/dbadmin. Contains options, device definitions and full filenames specific to the archecker program. A user profile which successfully accesses Informix on the RFC ax is also assumed.
----------------	--

2.2 “housecleaning” requirements

There should be no need to purge any files. The archecker program creates one log file, and this script maintains a current and previous version of the log file. The two log files are located in /rfc_arc/logs/dbadmin. The archecker executable also creates temporary files in the SAVE subdirectory, under the directory specified by the AC_STORAGE variable in the ac_config.adbs config file (/tmp by default). However, these files are deleted and recreated with each run of archecker so one only needs to ensure adequate space exists for the creation of these files. The standard RFC ax /tmp partition size should be adequate.

3.0 User How-To

There are two ways the user can run this script; both ways are described below. It doesn't matter which method the user chooses; its basically user preference.

Method 1 is to use the arcmenu program; steps follow..

- 1) open a terminal window
- 2) enter the command xhost +
- 3) login to the ax
- 4) export the display (example: export DISPLAY=lx1-xxx:0.0)
- 5) at the prompt, type arcmenu This will bring up the main menu as shown in Figure 1
- 6) select option "a", the admin menu. This will bring up the admin menu as shown in Figure 2.
- 7) Select option "5" from this menu.

Method 2 is to run the script from the command line; steps follow.

- 1) open a terminal window
- 2) enter the command xhost +
- 3) login to the ax
- 4) export the display (example: export DISPLAY=lx1-xxx:0.0)
- 5) login to the rax
- 6) at the prompt, type cd /rfc_arc/scripts/dbadmin
- 7) at the prompt, type run_archecker

Example output file

The log file "archecker.log" is created in the /rfc_arc/logs/dbadmin directory. The log file from the previous run is "archecker.log.OLD. Portions of the log file are also echoed to standard output. A portion of this file is shown below.

```
STATUS: Checking adb_ob1msr:pedrsep_time_ind
STATUS: Checking adb_ob1msr:pedfsep_time_ind
STATUS: Checking adb_ob1msr:pecrsep_time_ind
STATUS: Checking adb_ob1msr:peoosep_time_ind
STATUS: Checking adb_ob1msr:unkstn_time_ind
STATUS: Table checks PASSED.
STATUS: BLOBChunk checks PASSED.
TIME: [03/16/2004 19:48:27] Checking Completed.
STATUS: Tables/Fragments validated:      458
Archive Validation PASSED.
```

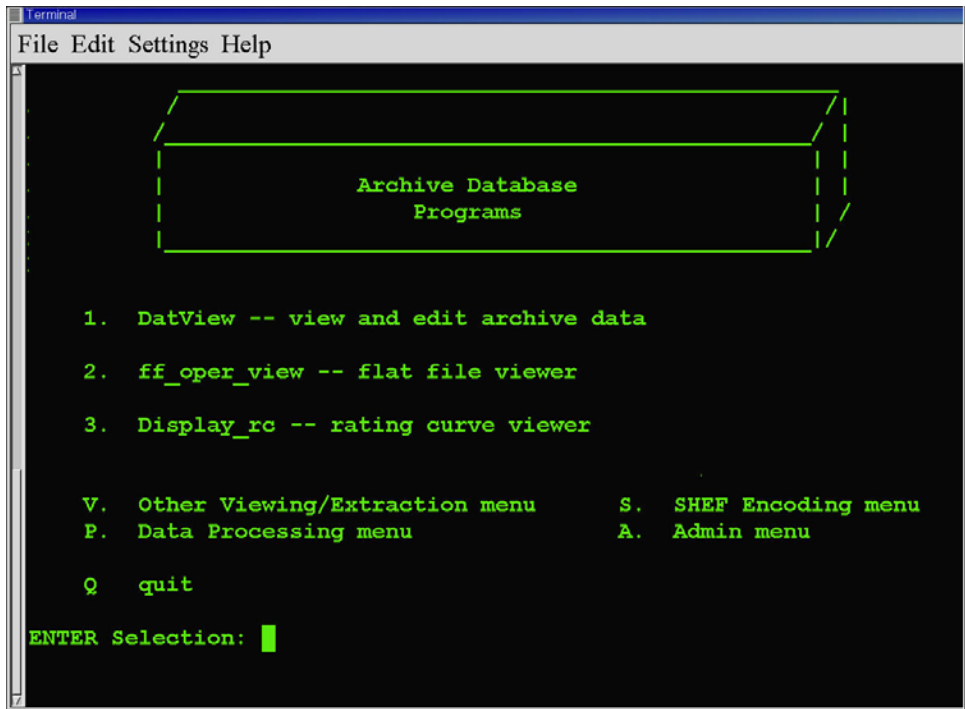


Figure 1. main menu

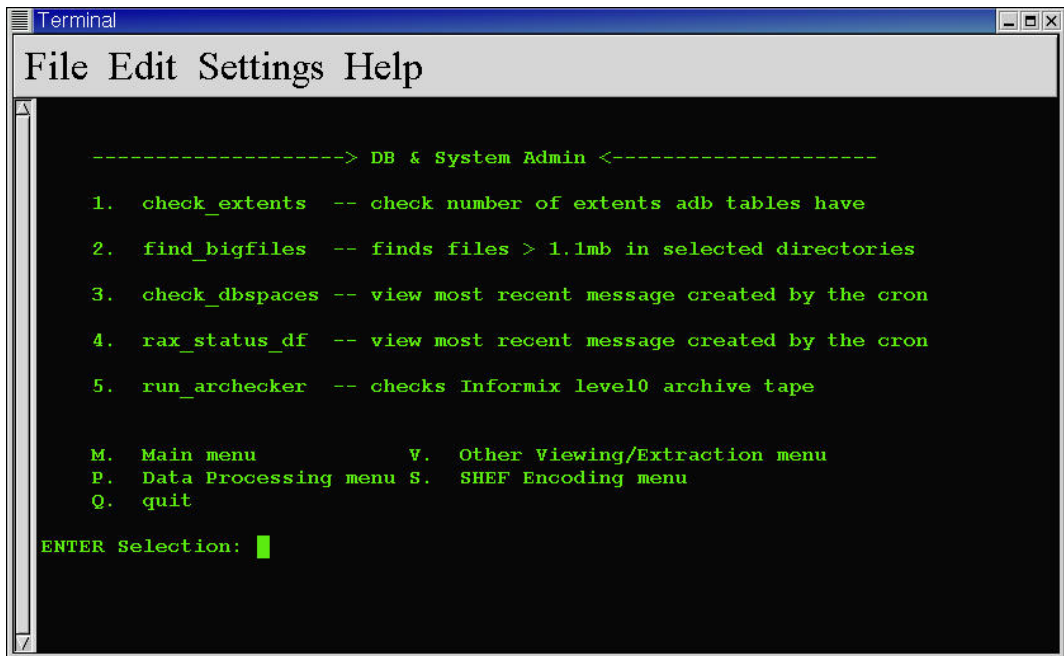


Figure 2. admin menu

4.0 Troubleshooting Information

The most common problem occurs when a user other than “oper” attempts to run the run_archecker script, and the archecker executable fails due to permission problems with file cleanup and creation. Numerous small files are created in the /SAVE subdirectory of the directory specified by the AC_STORAGE variable in the ac_config.adbs config file. As delivered, this is /tmp. Specify another directory for AC_STORAGE if space in /tmp is limited.

If for some reason the script fails contact RFC Support.

5.0 Maintenance Information

Originating Programmer/Office: Ellis, Larry
North Central River Forecast Center
Chanhassen MN

Maintenance programmer/Office: Ellis, Larry
North Central River Forecast Center
Chanhassen MN

6.0 References

<http://www.prstech.com/downloads.shtml>

Informix Dynamic Server Administrator's Reference

http://www.iiug.org/resources/whitepapers/IDSOLTP_wp.pdf

/rfc_arc/scripts/dbadmin/run_archecker contains extensive comments and suggestions for local customization.