

Figure 1.

Dead Run

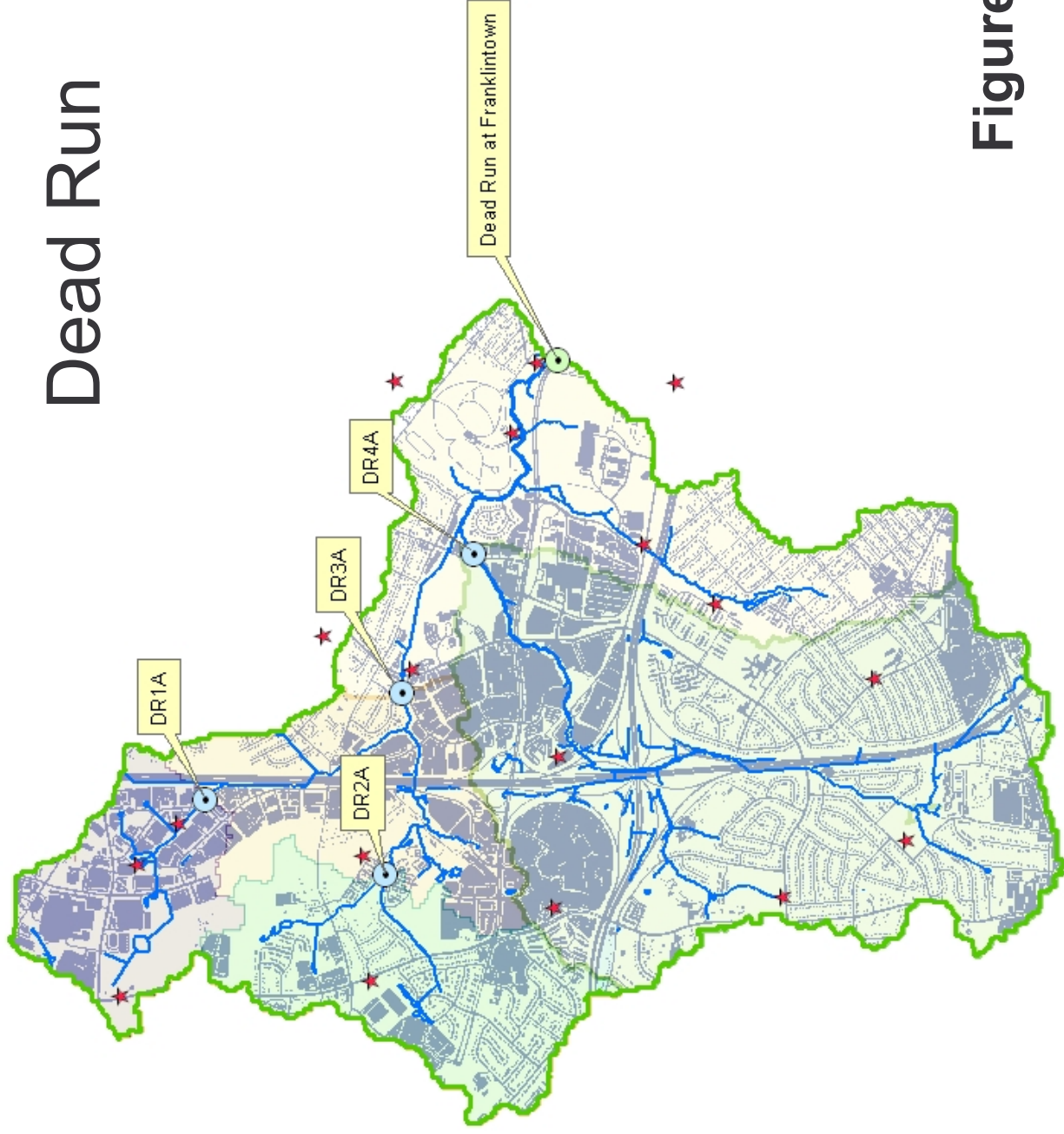


Figure 2.



Figure 3.

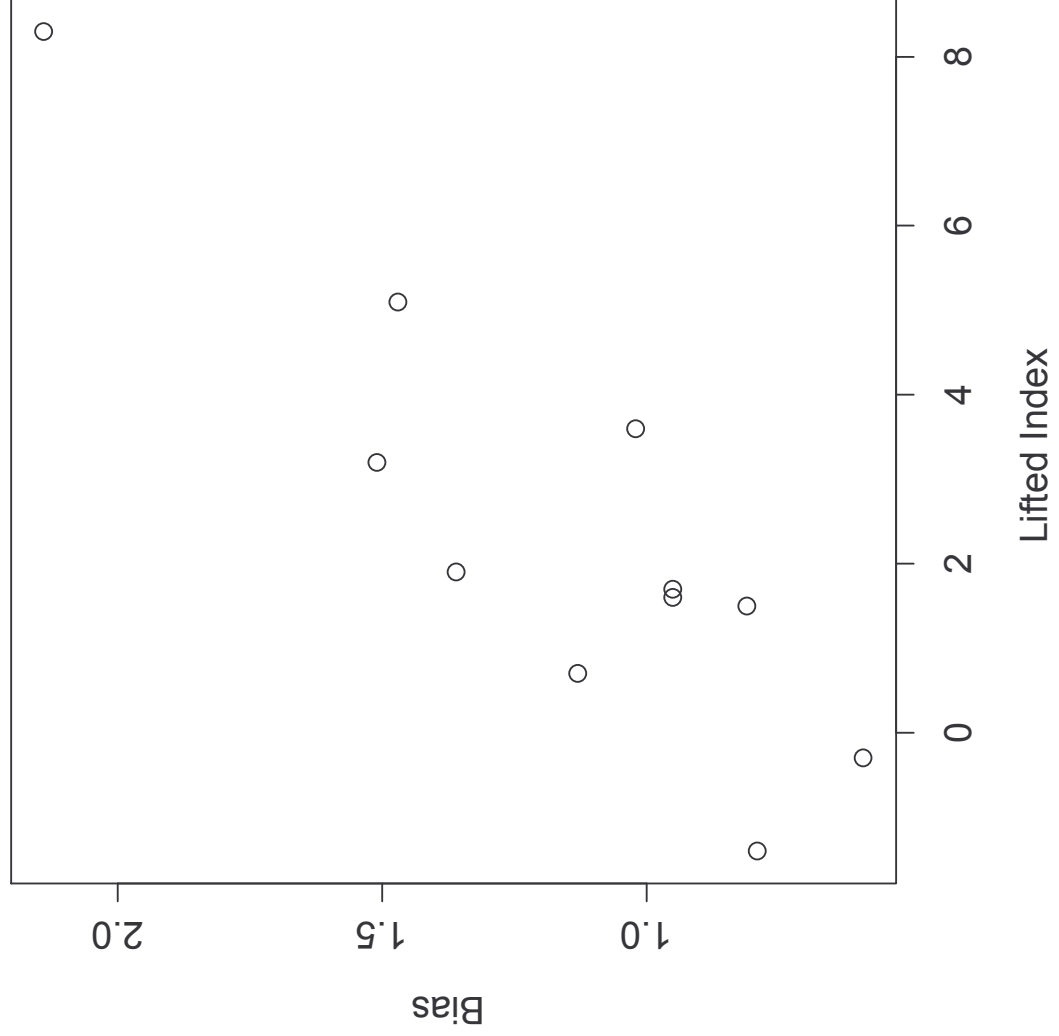


Figure 4.

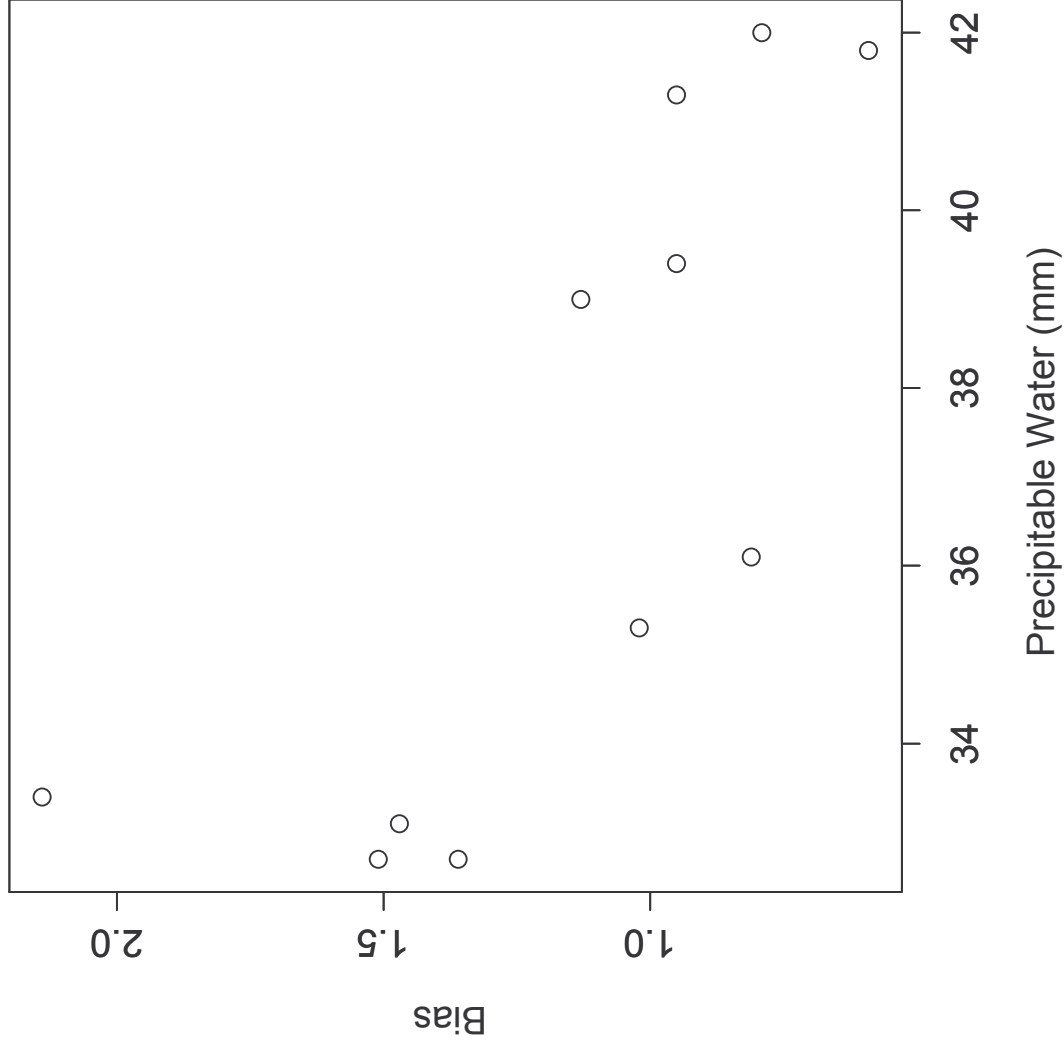


Figure 5.

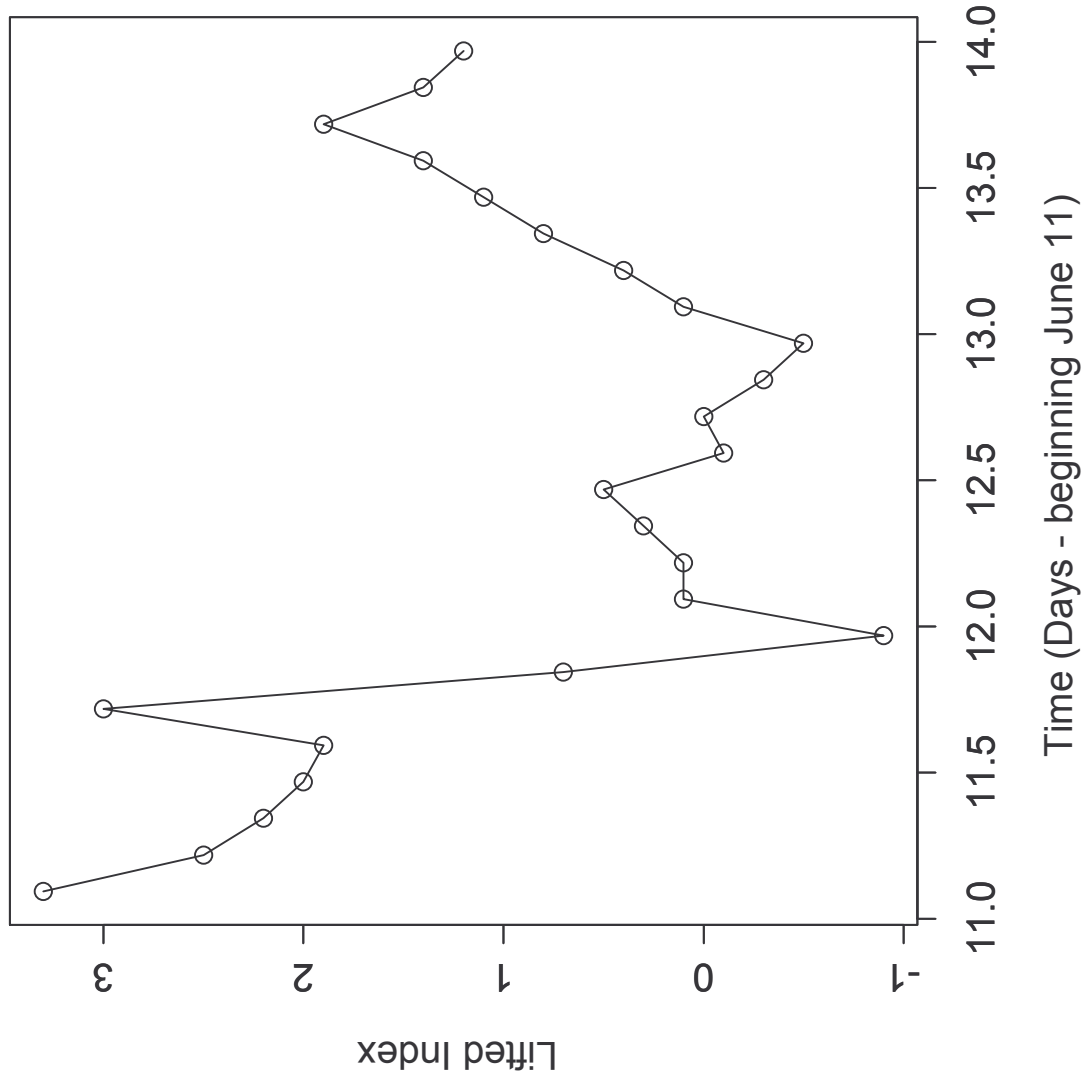


Figure 6.

Storm Total 12 June 2003 am

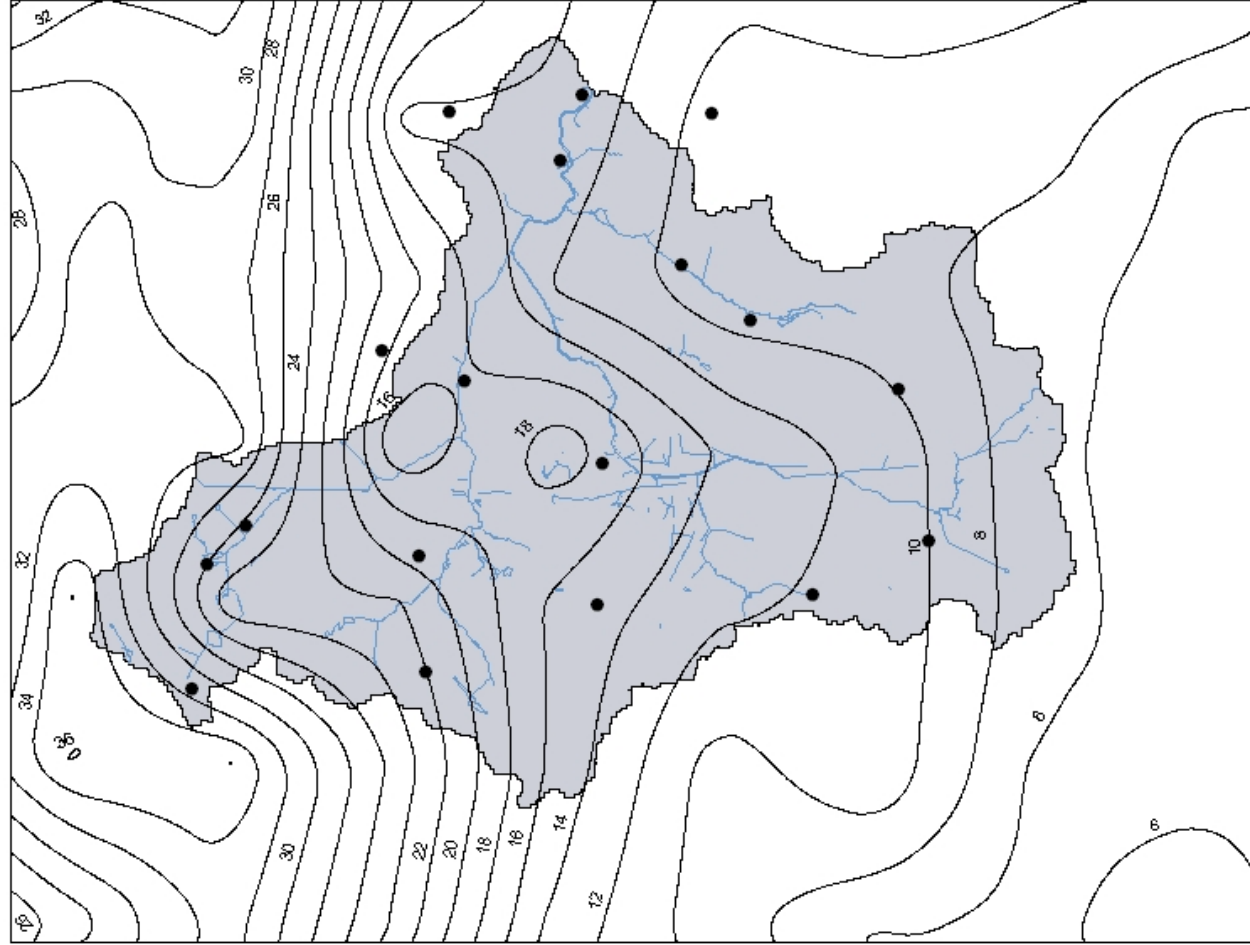


Figure 7a.

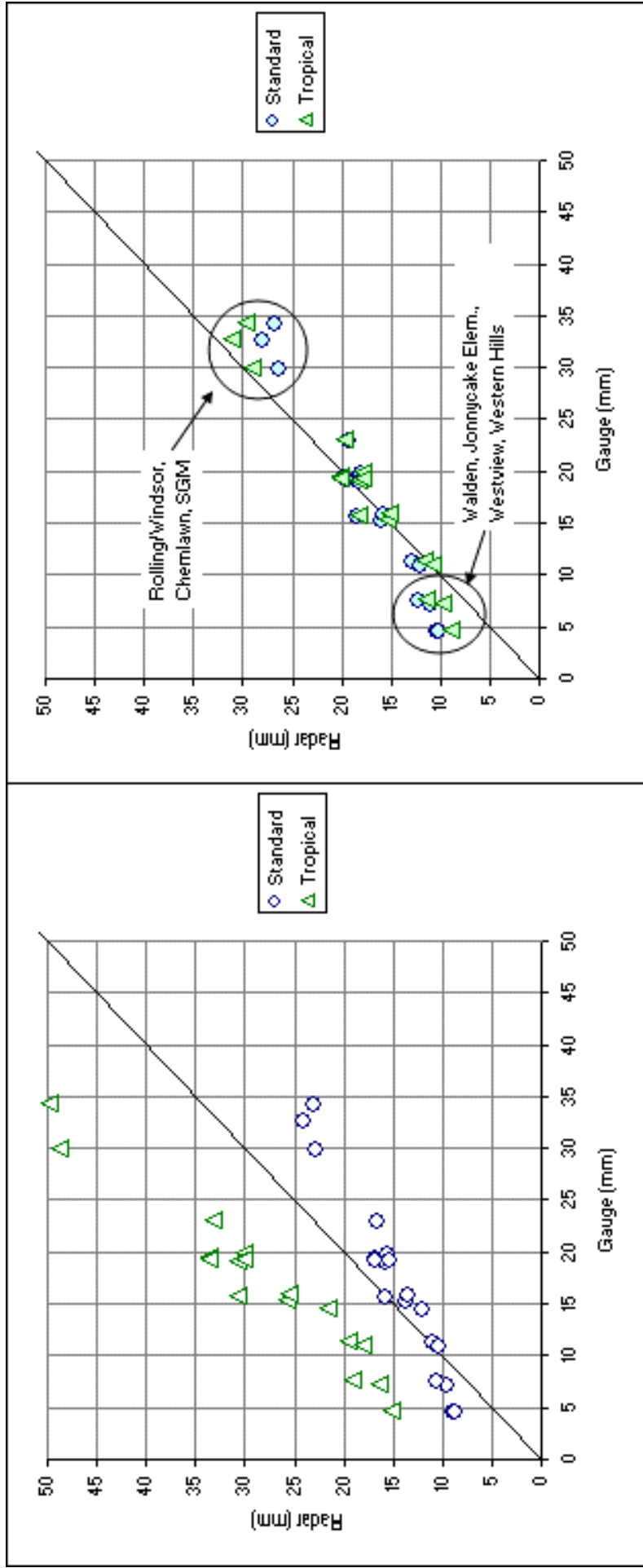


Figure 7b.

Storm Total 18 Sept 2003

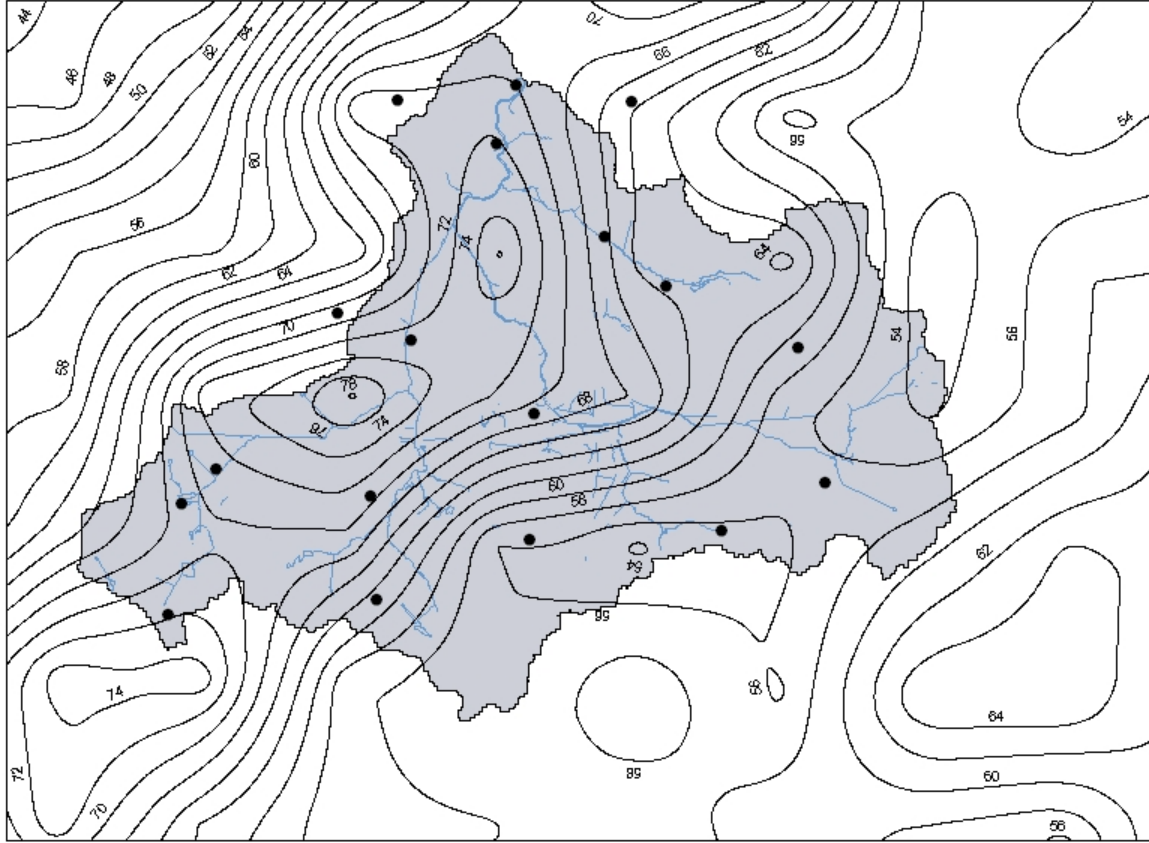


Figure 8a.

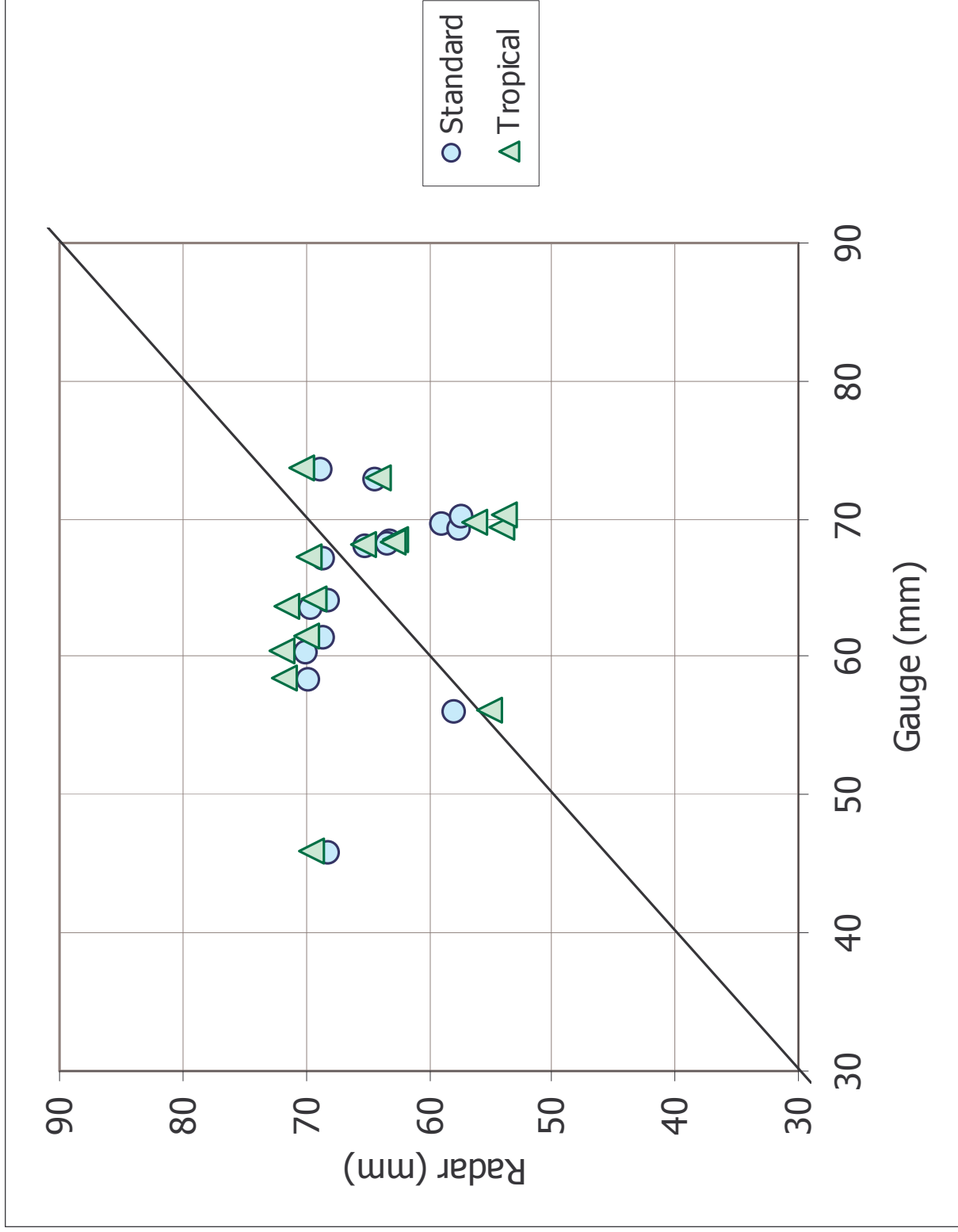


Figure 8b.

Storm Total 22 Sept 2003

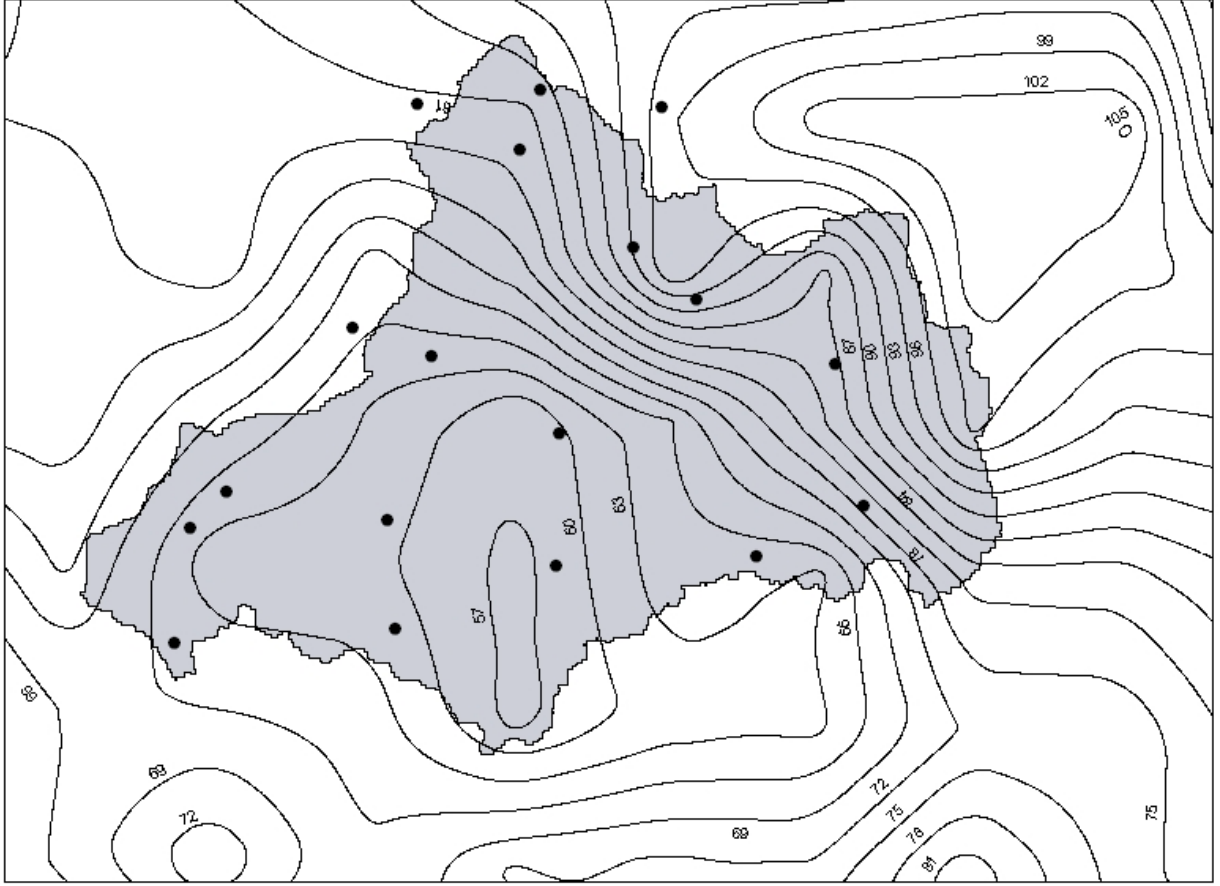


Figure 9a.

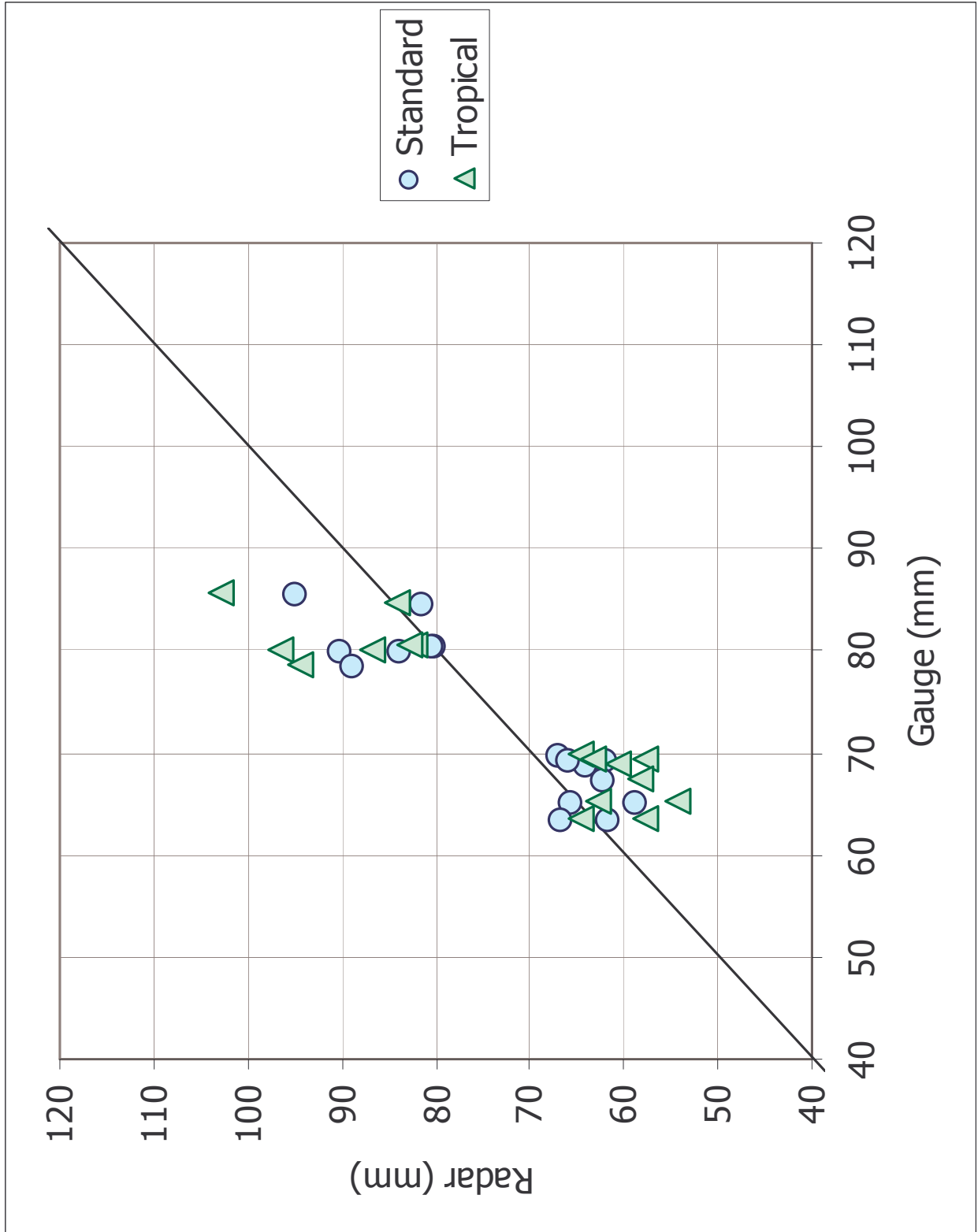


Figure 9b.

Storm Total 14 Oct 2003

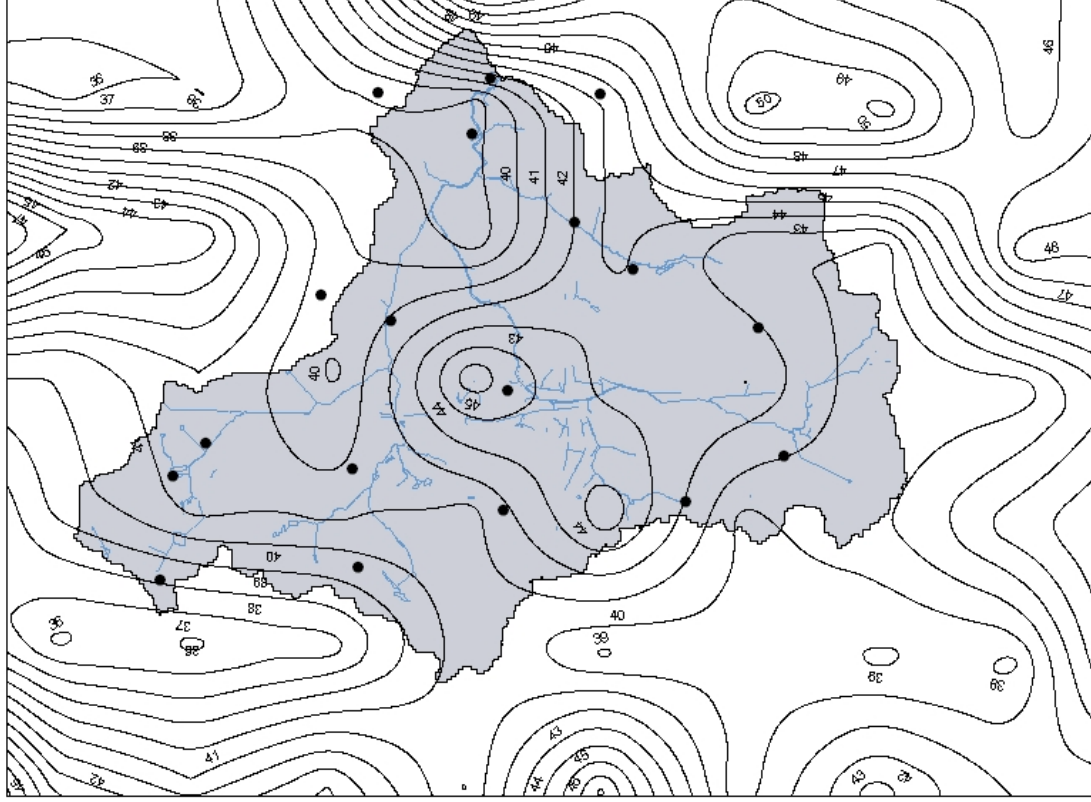


Figure 10a.

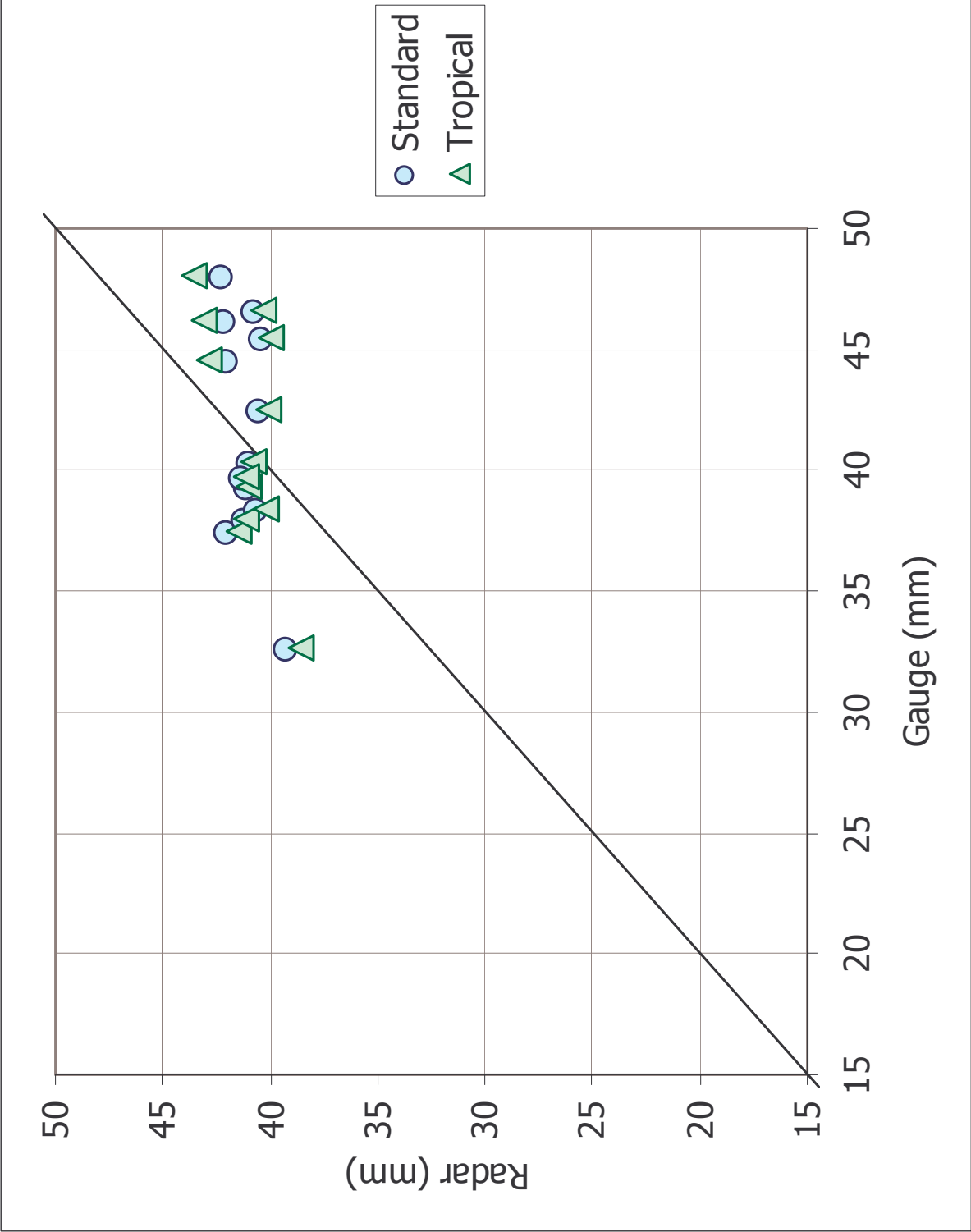


Figure 10b.

Storm Total 27 Oct 2003

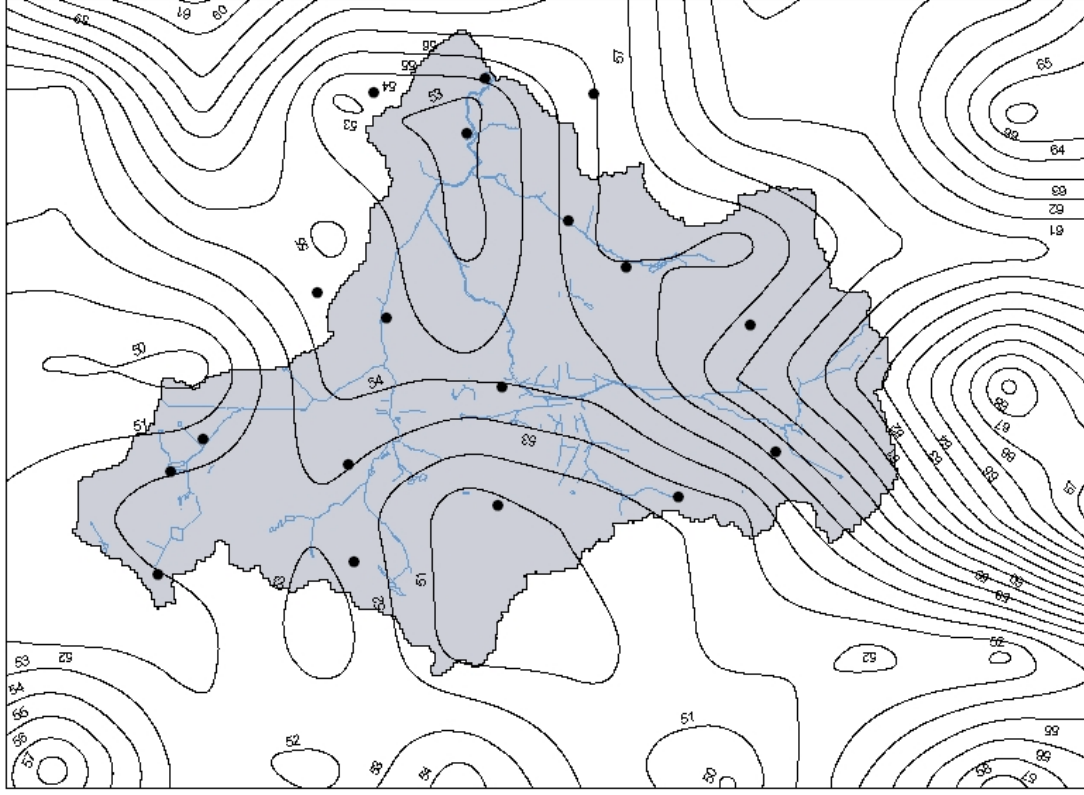


Figure 11a.

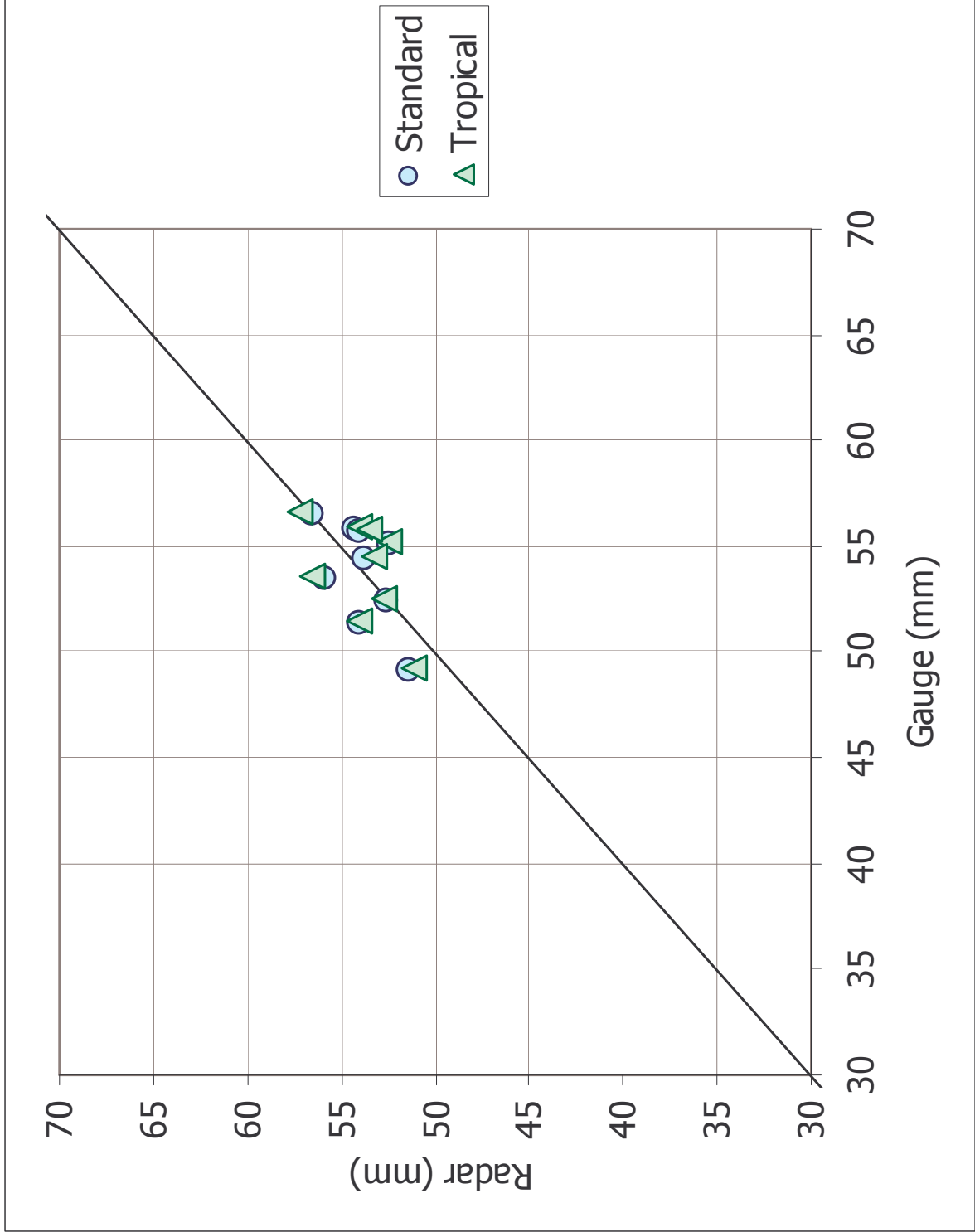


Figure 11b.

Storm Total 5 Nov 2003

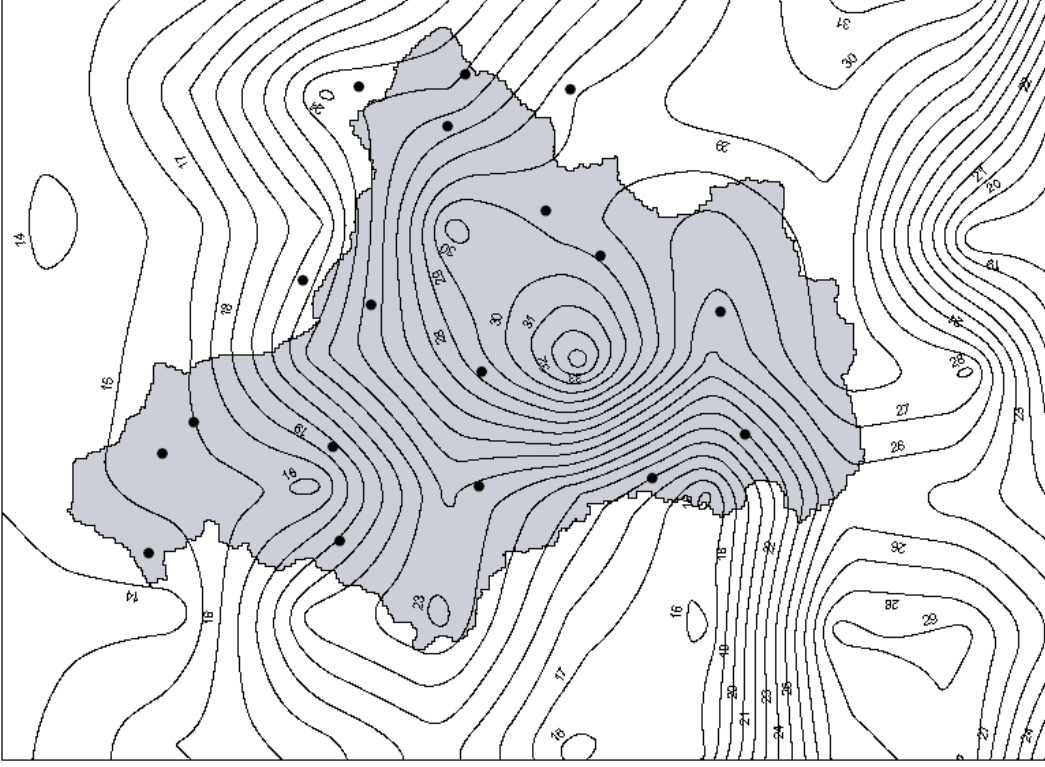


Figure 12a.

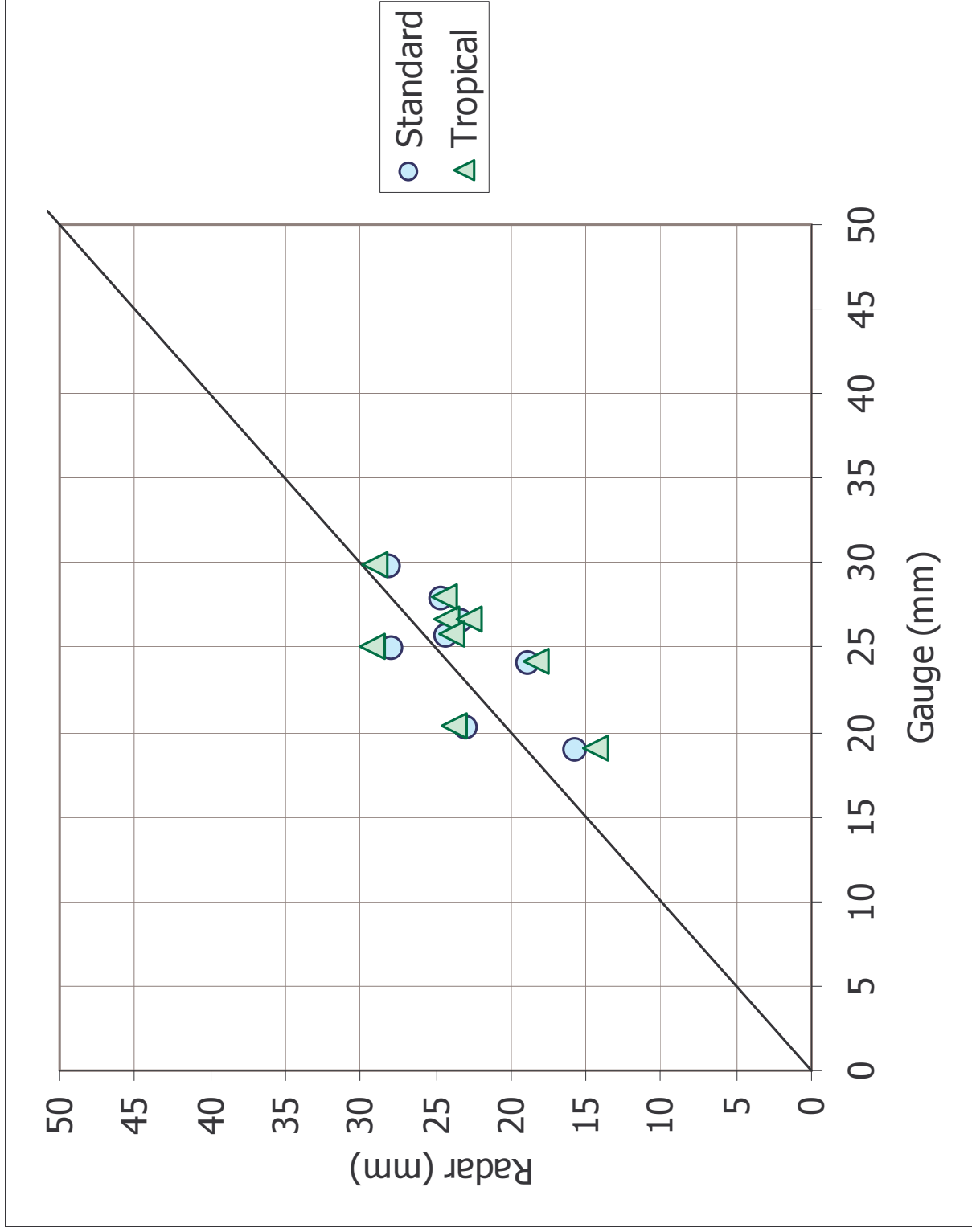


Figure 12b.

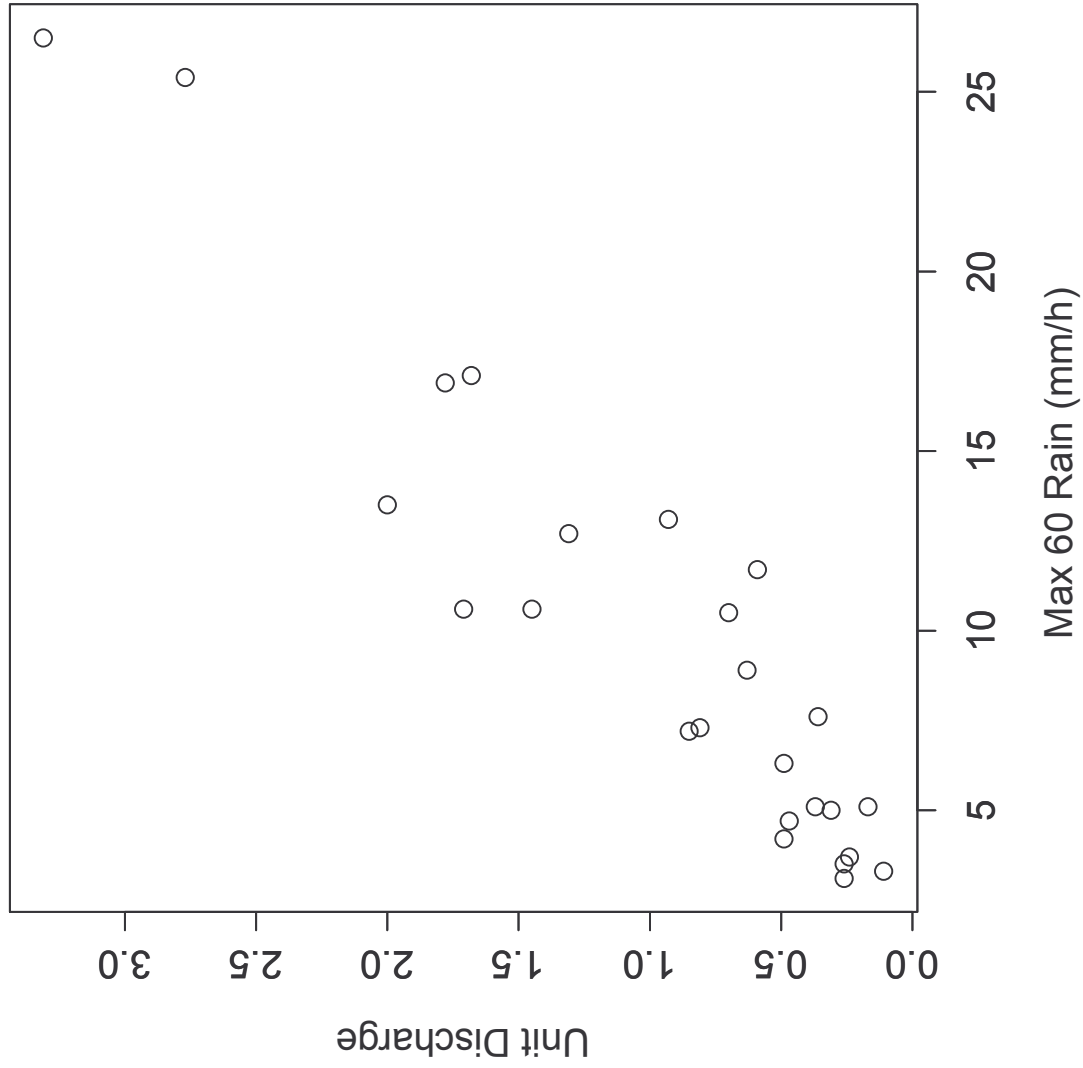


Figure 13.

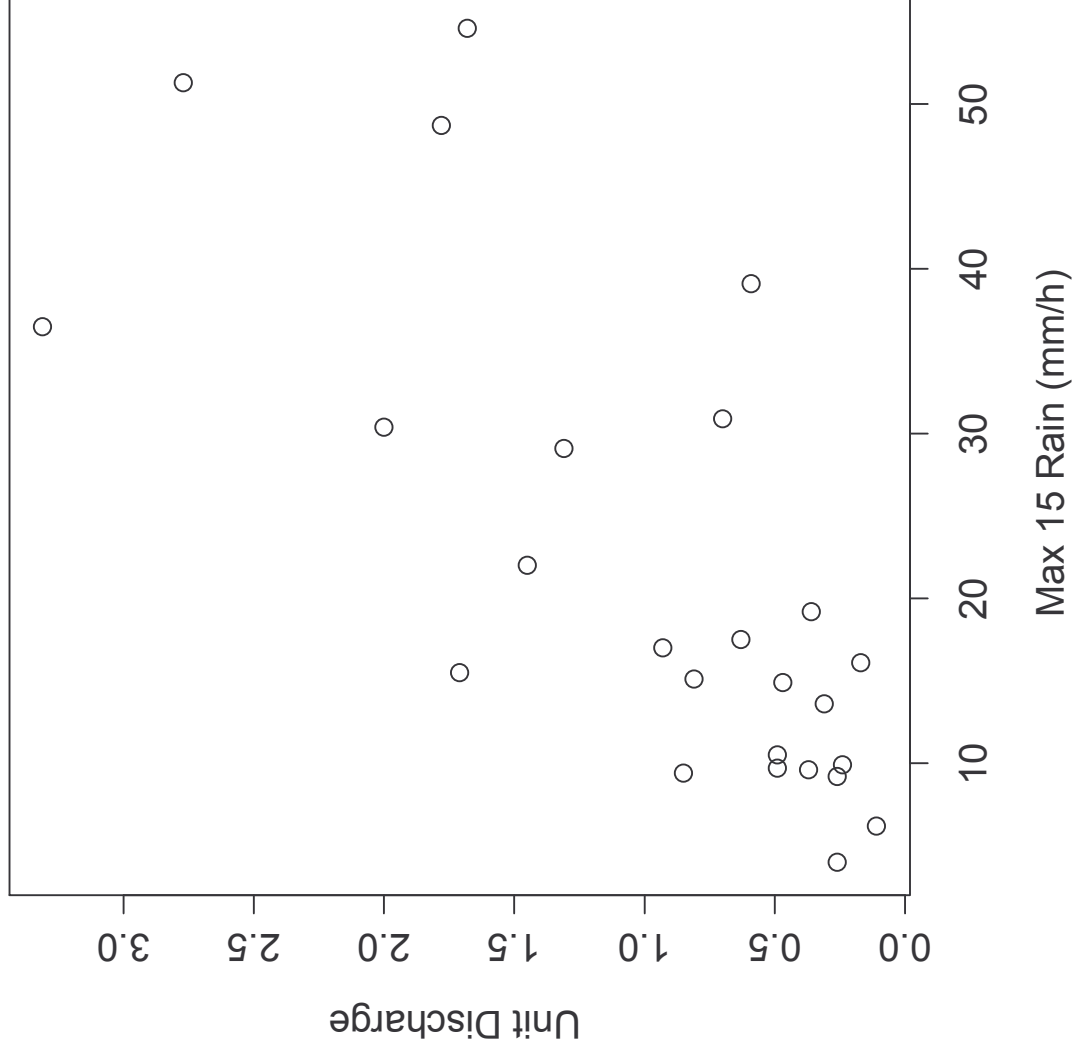
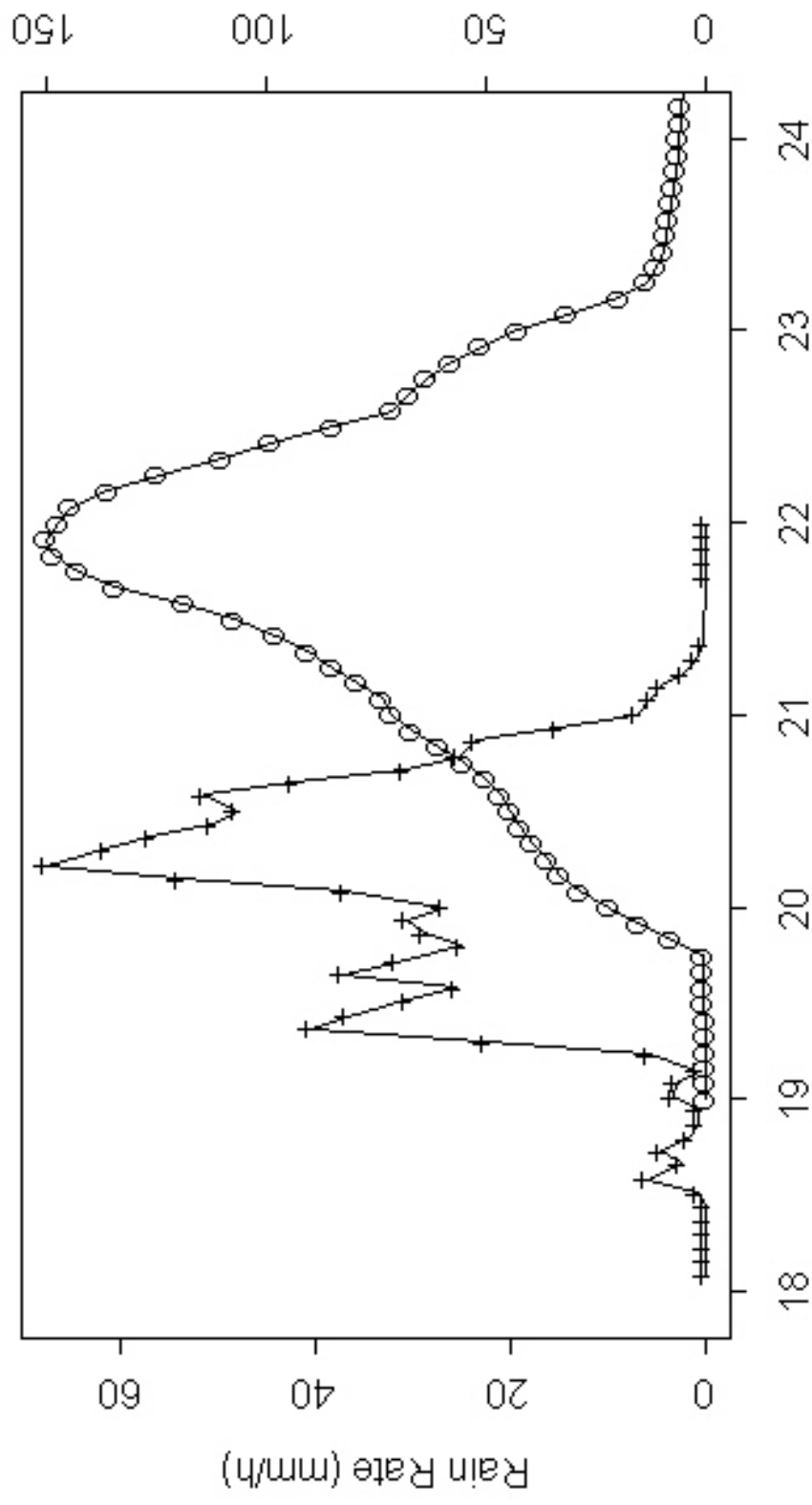


Figure 14.

Dead Run



Time UTC
7 July 2004

Figure 15.

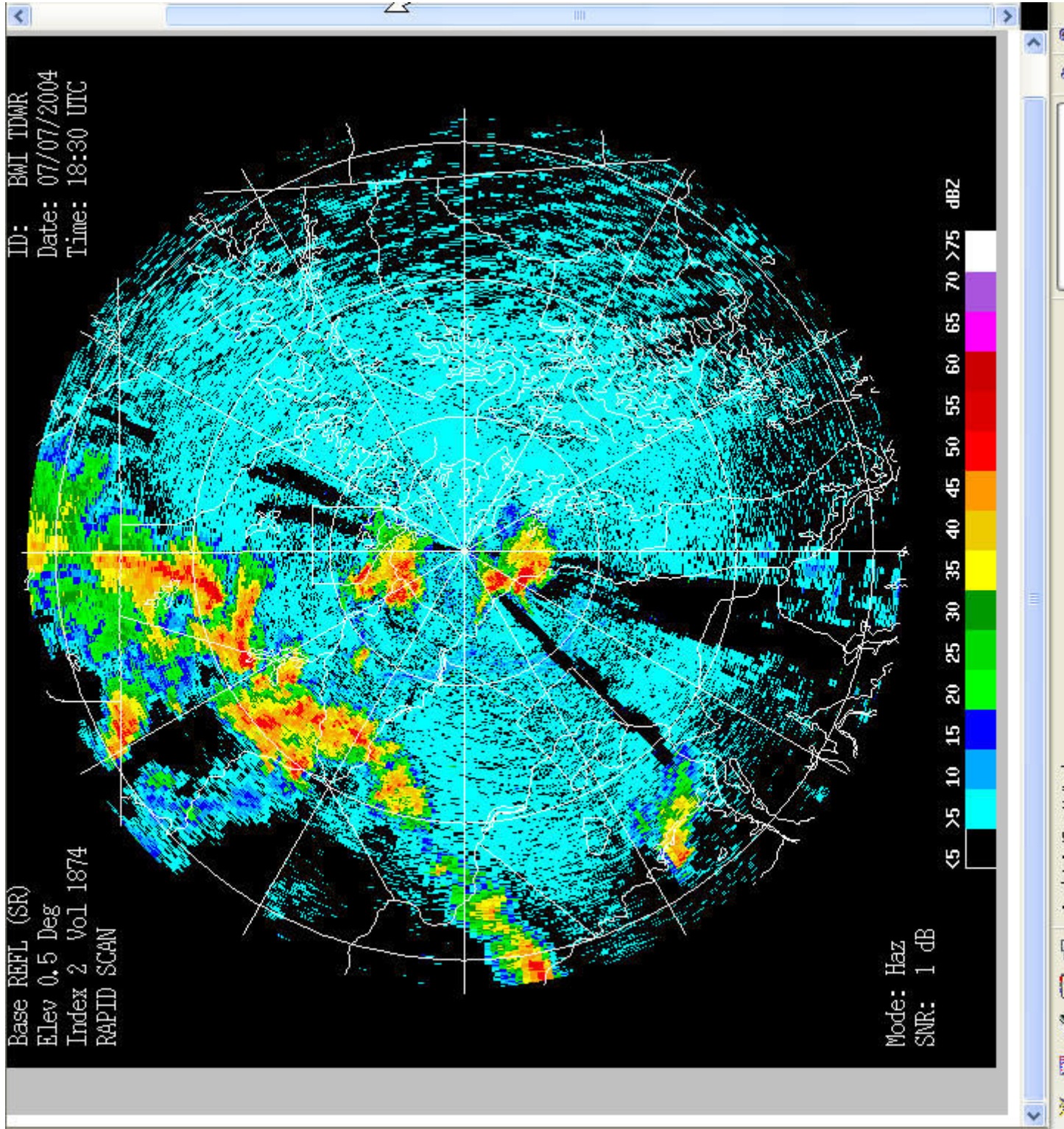


Figure
16a

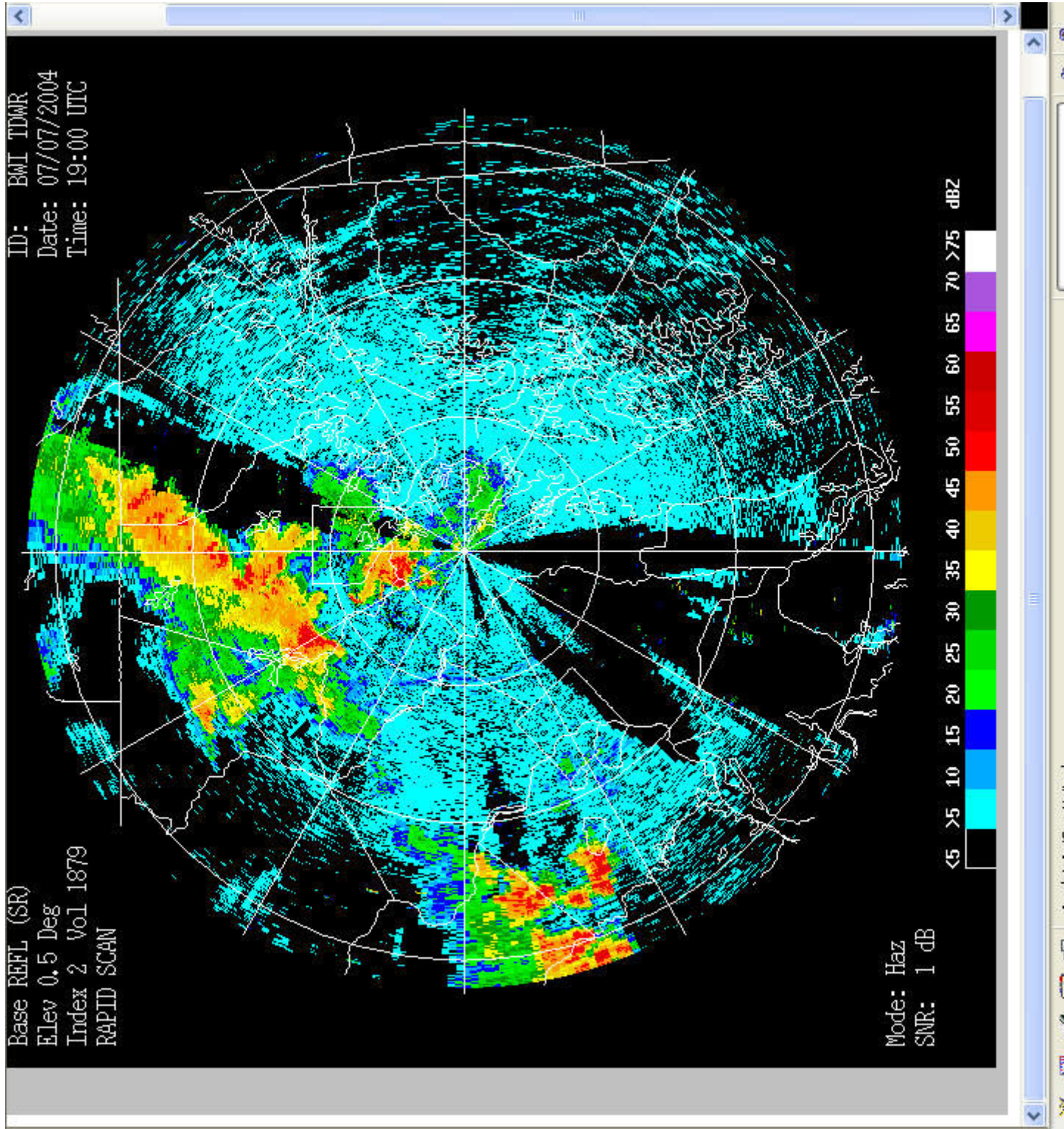


Figure
16b.

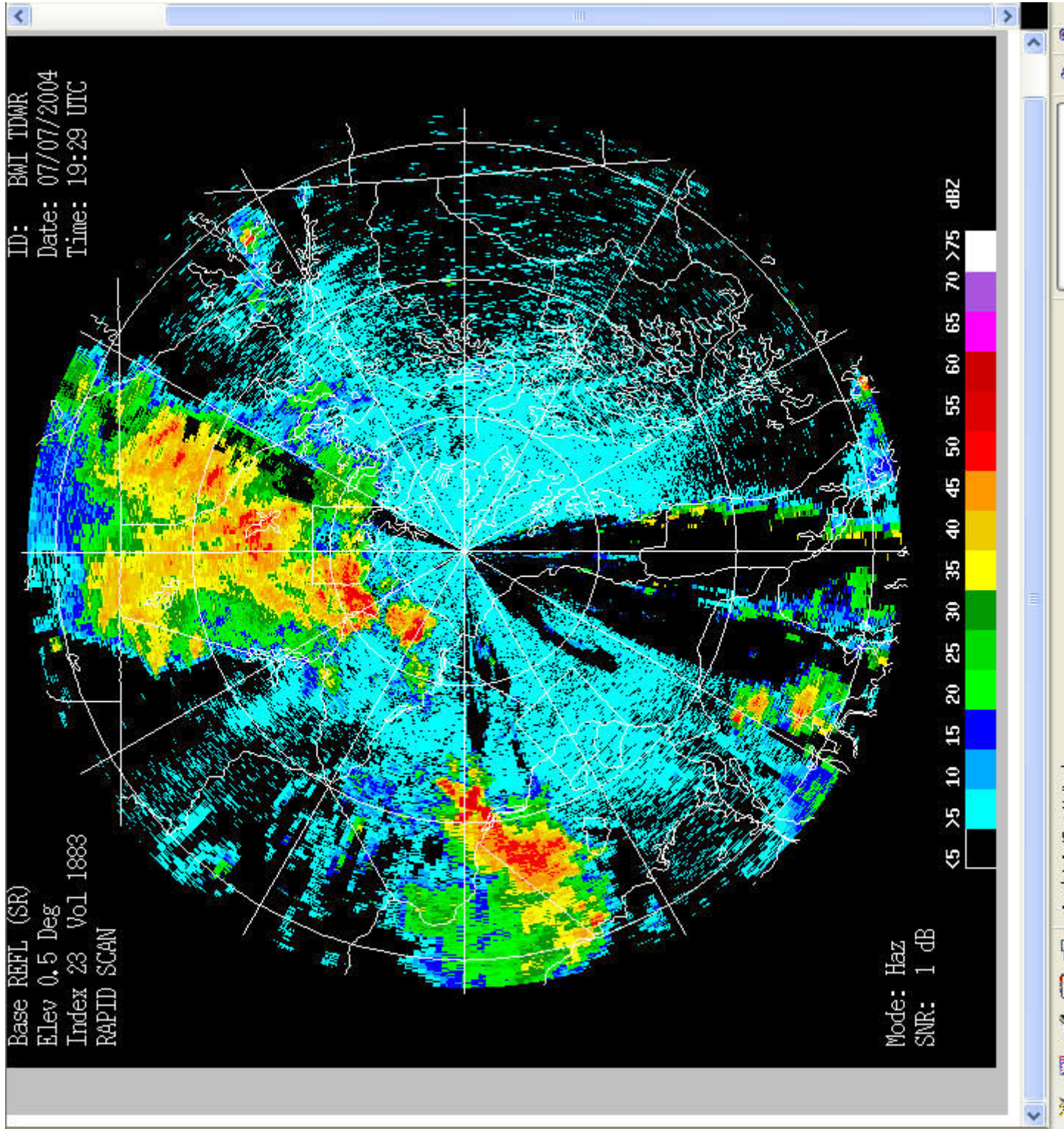


Figure 16c.

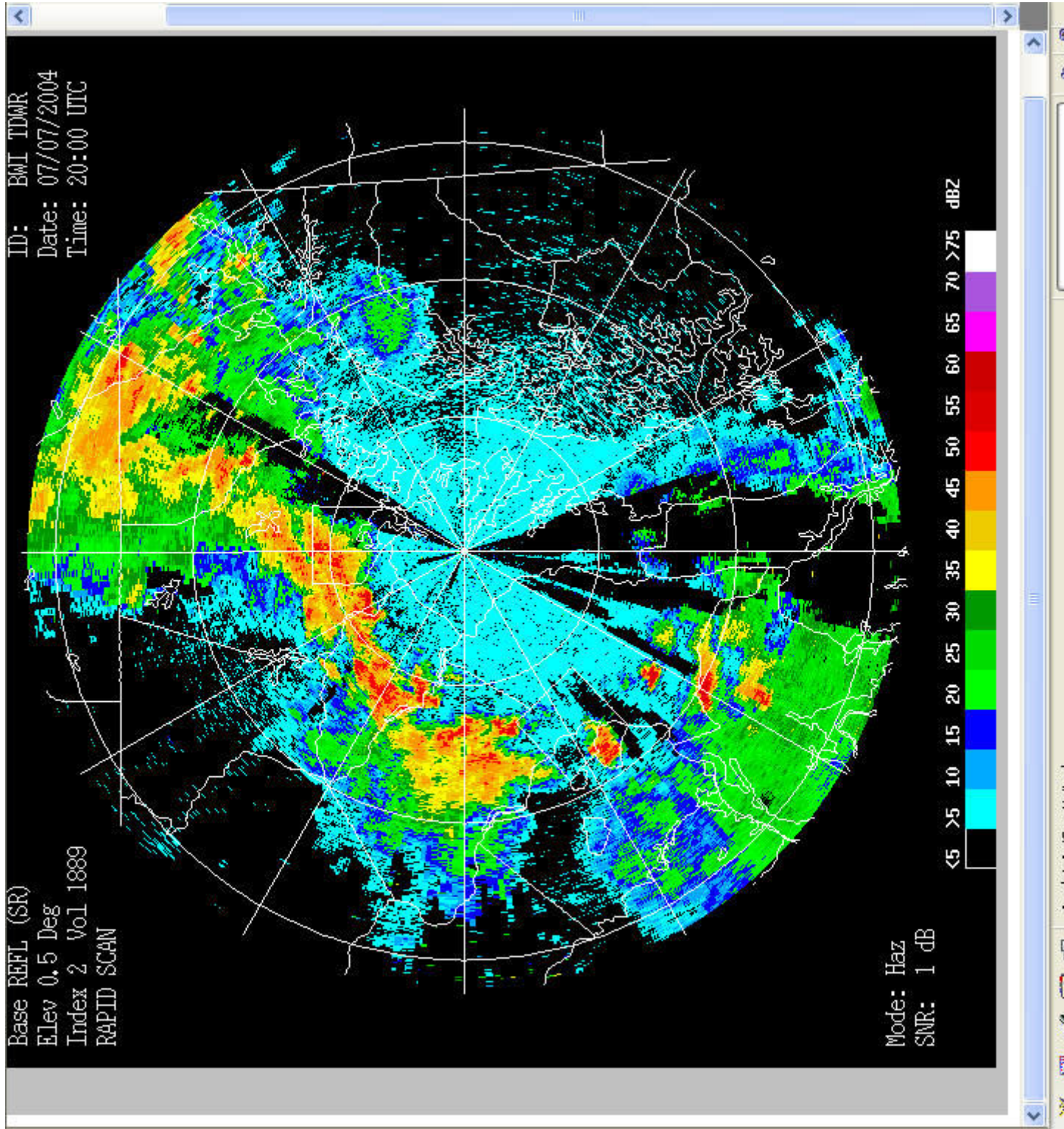


Figure 16d.

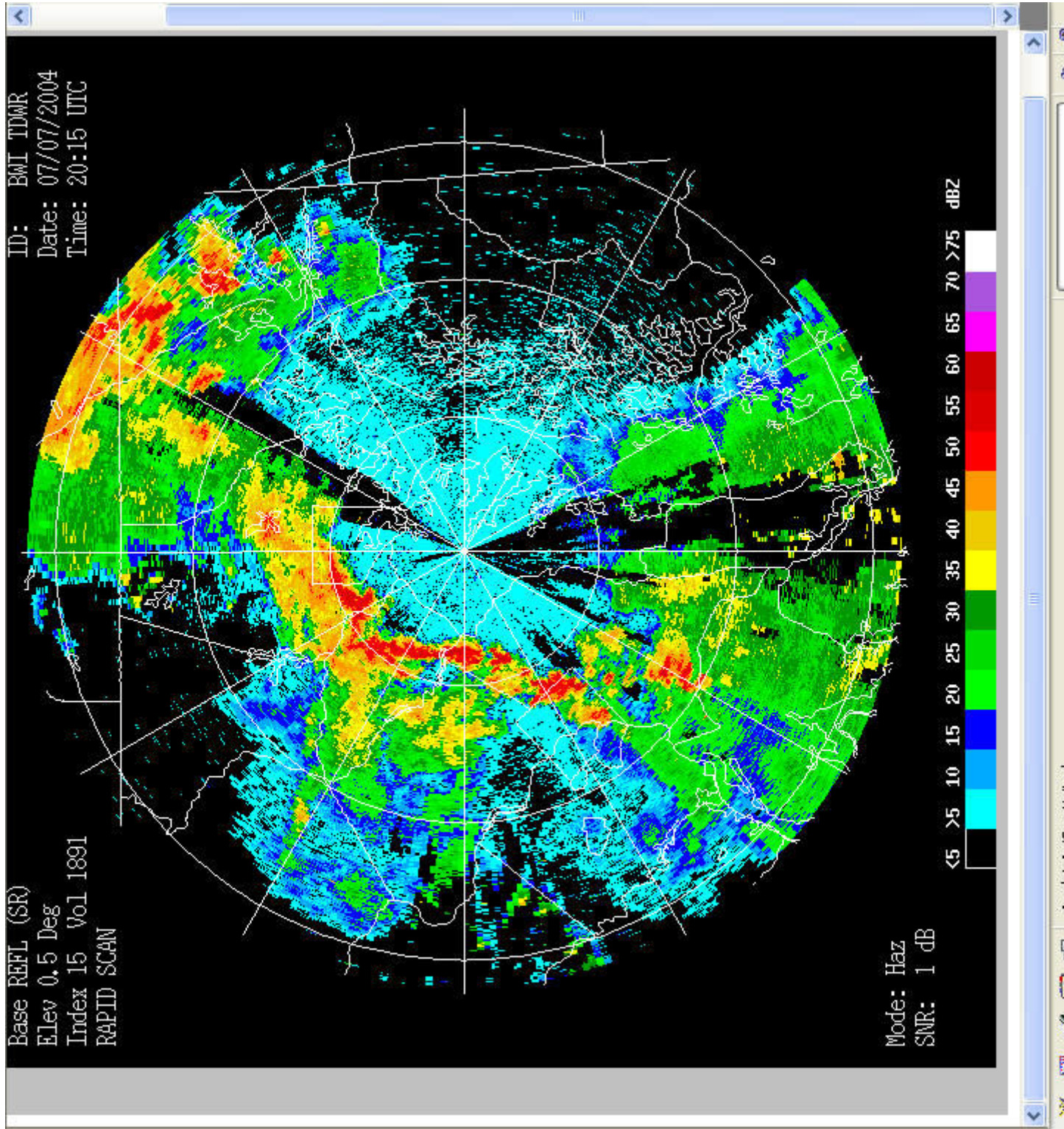


Figure 16e.

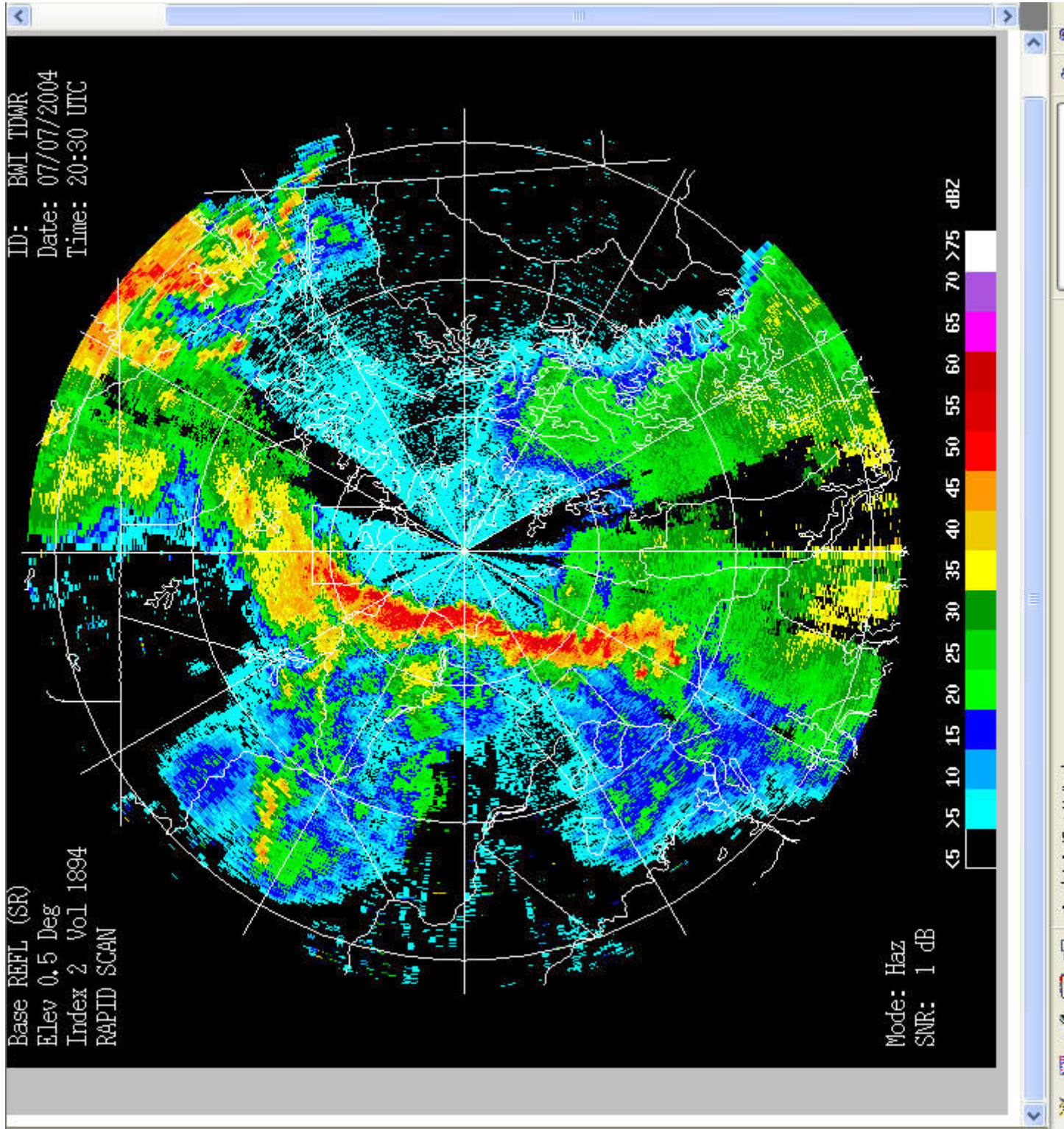
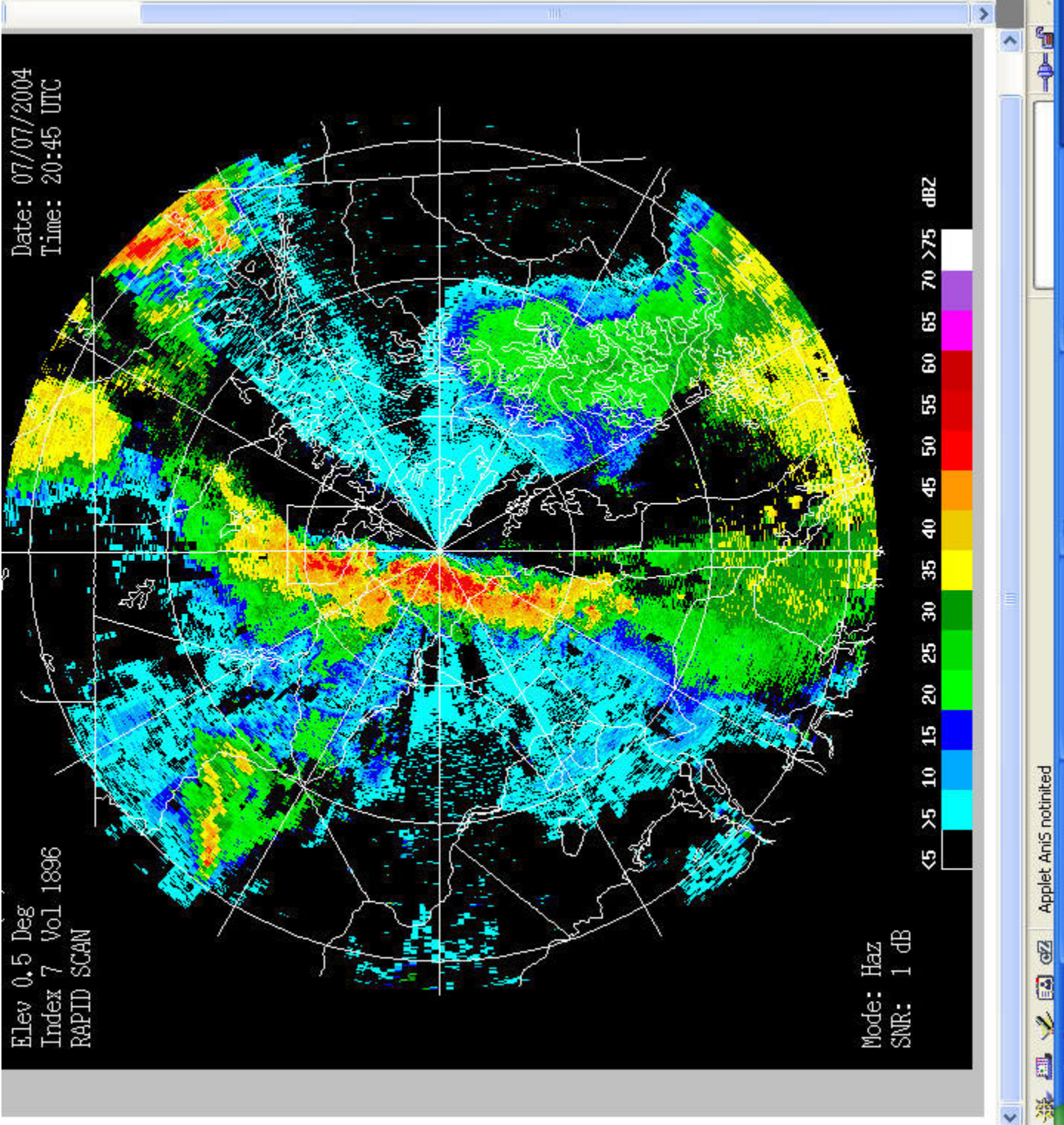


Figure 16f.

Elev 0.5 Deg
Index 7 Vol 1896
RAPID SCAN

Date: 07/07/2004
Time: 20:45 UTC



Mode: Haz
SNR: 1 dB

<5 >5 10 15 20 25 30 35 40 45 50 55 60 65 70 >75 dBZ

Figure 16g.

Storm Total 7 July 2004 (WSR-88D data)

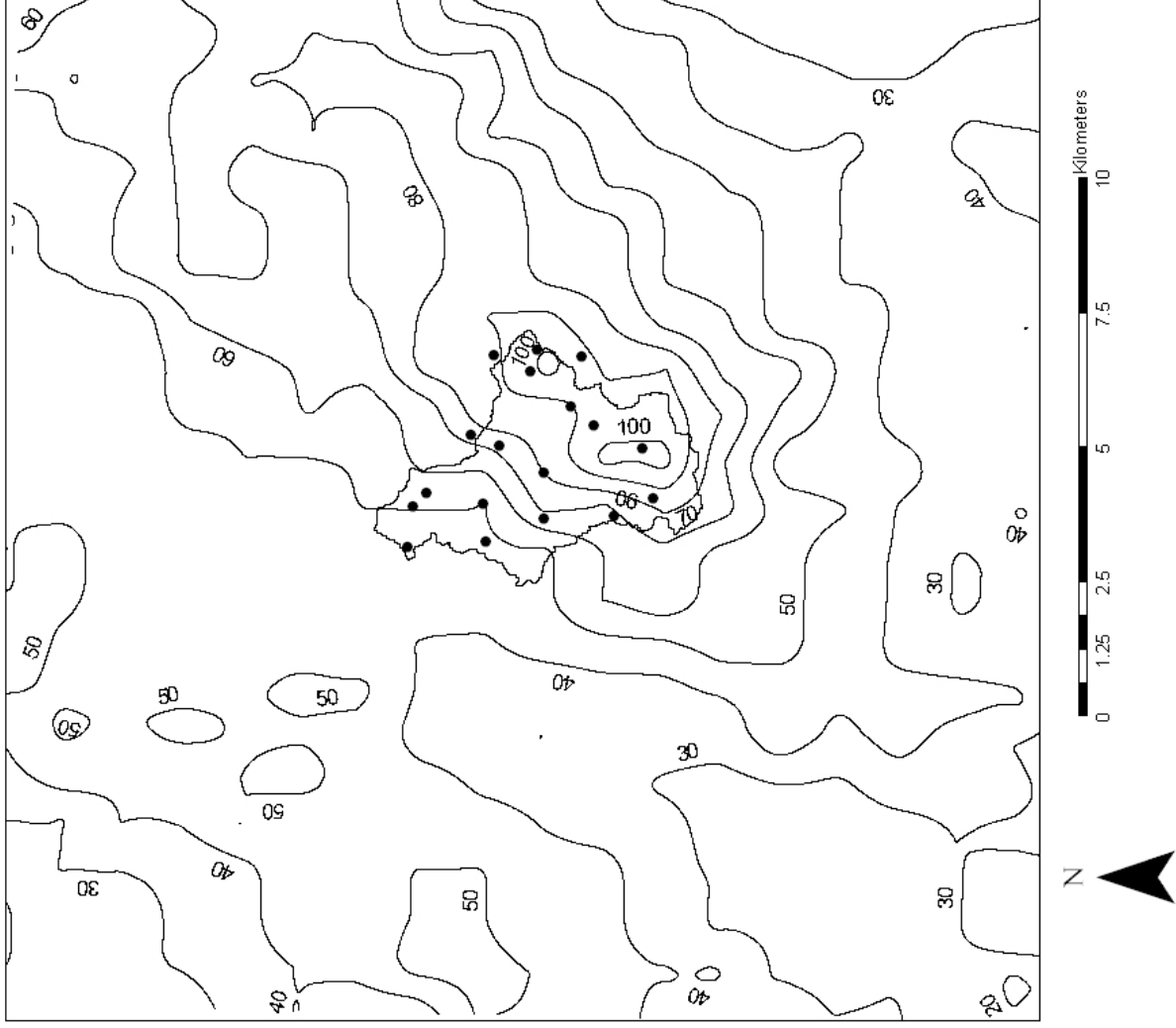
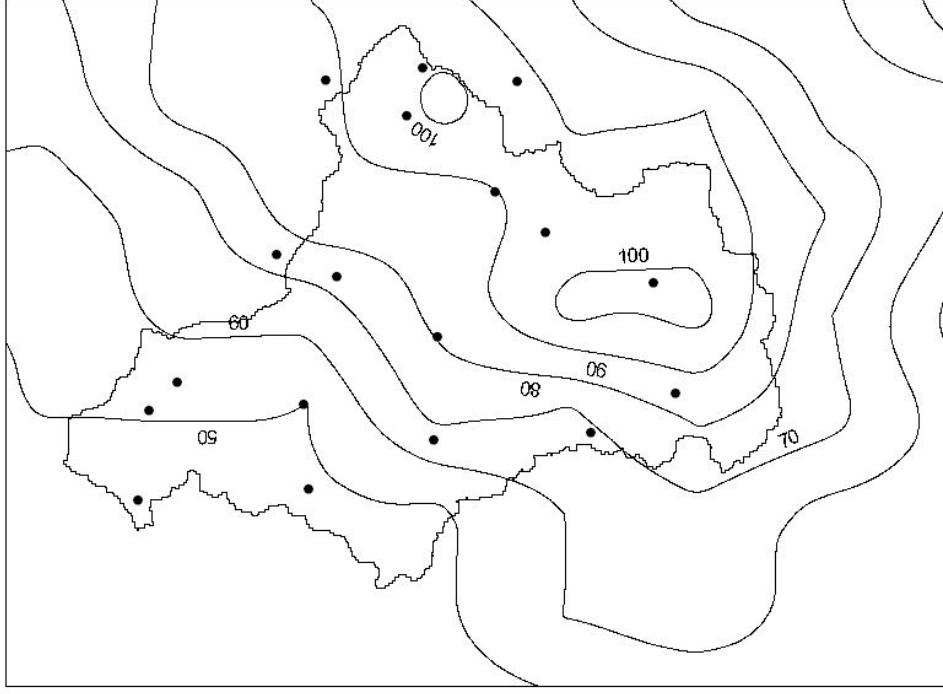


Figure 17.

Storm Total 7 July 2004 (WSR-88D data)



Storm Total 7 July 2004 (TDWR data)

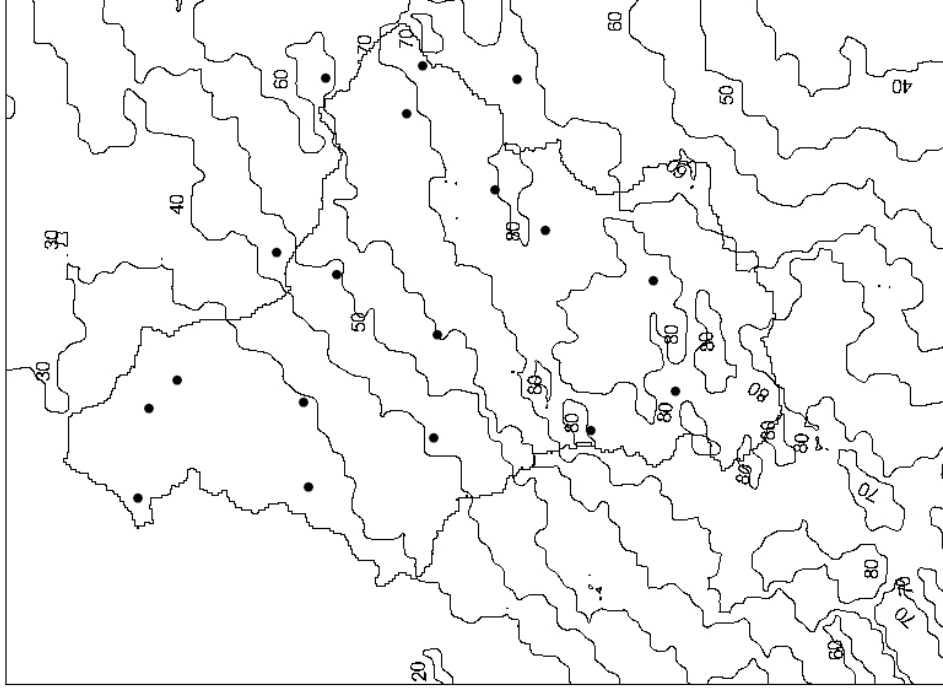


Figure 18.

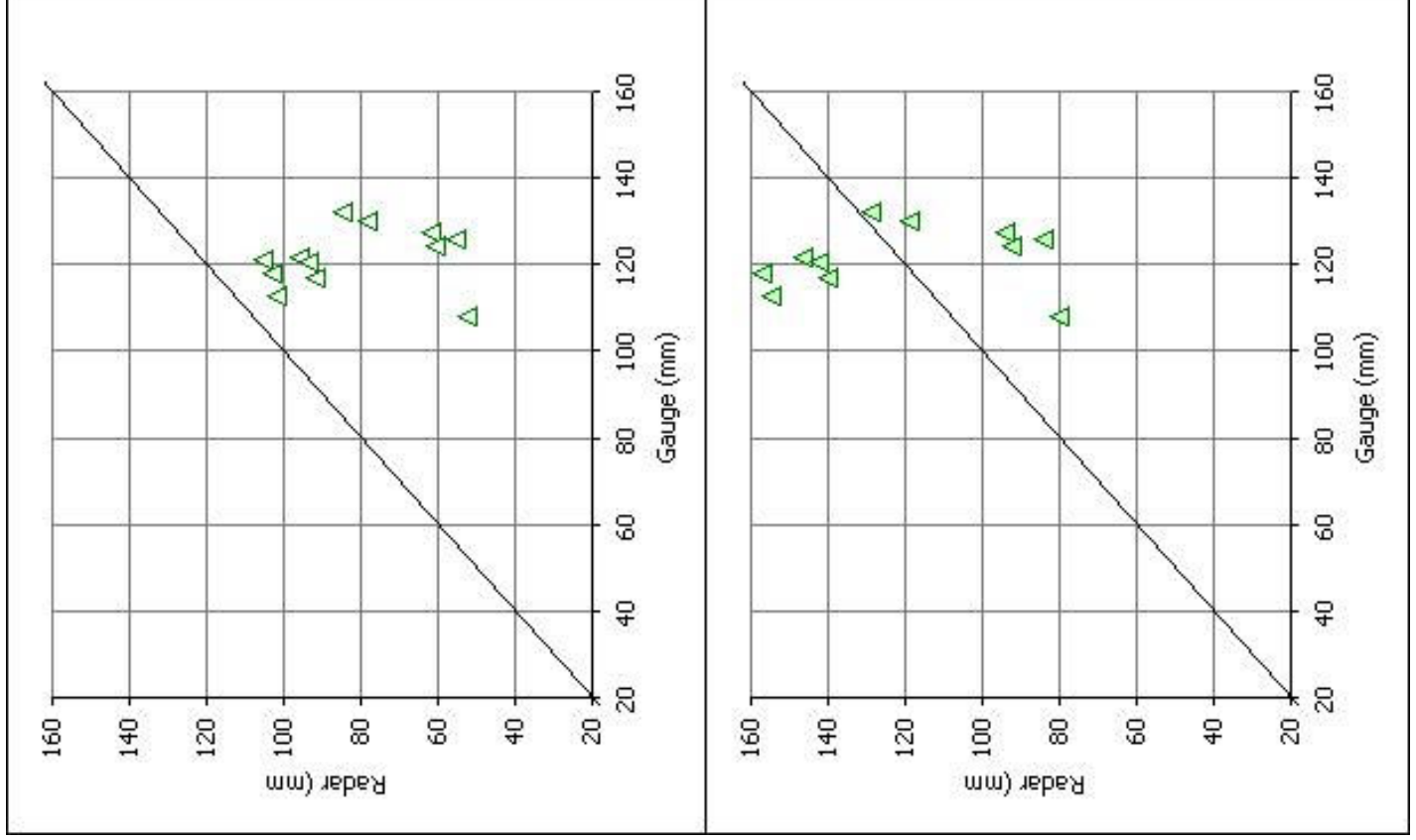


Figure 19.

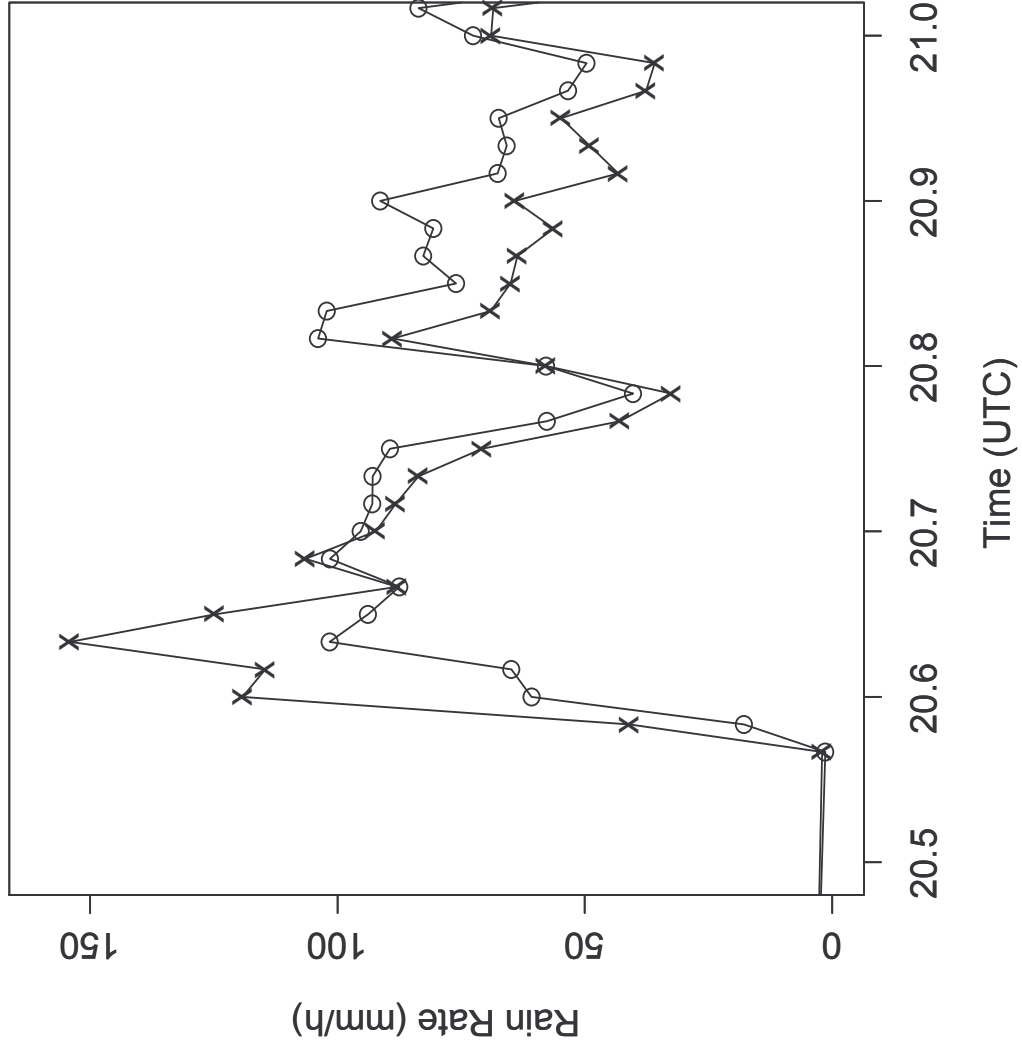


Figure 20.

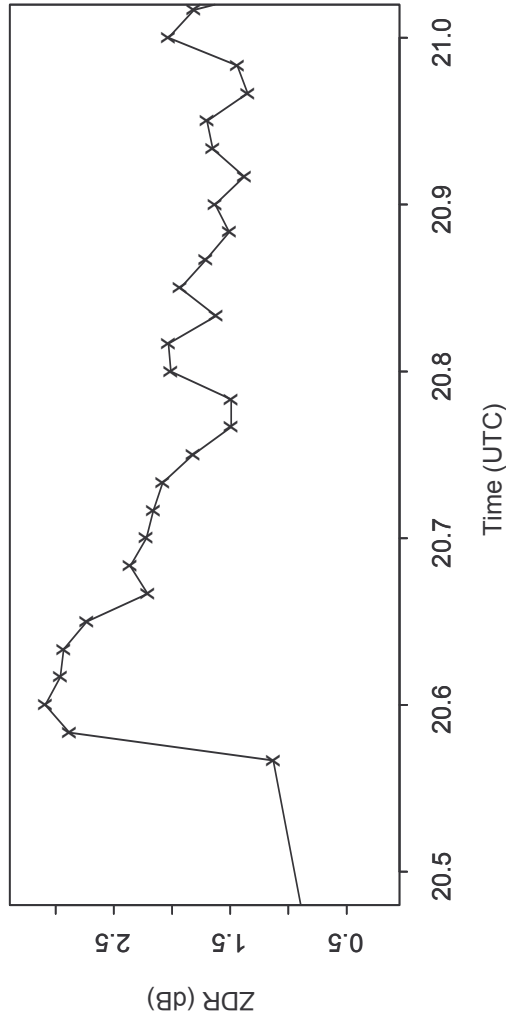
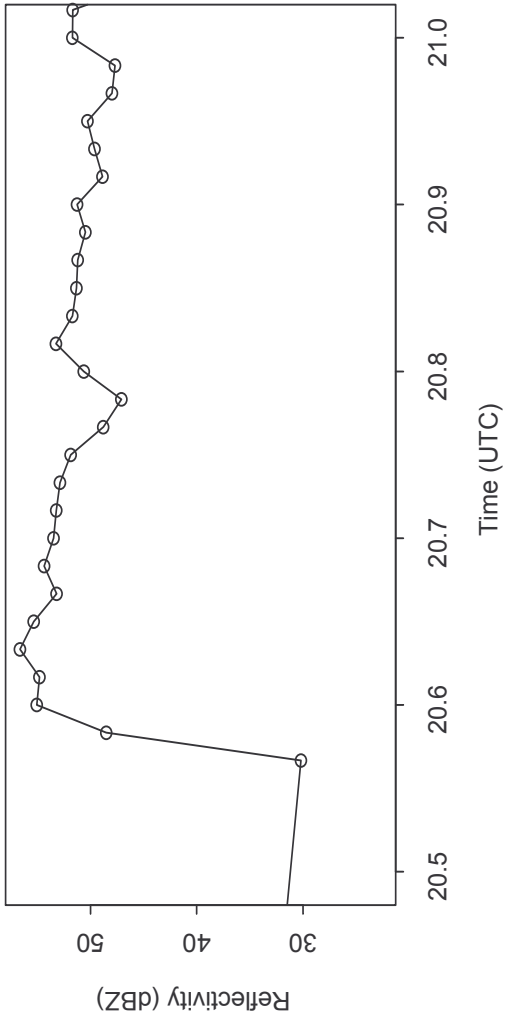


Figure 21.

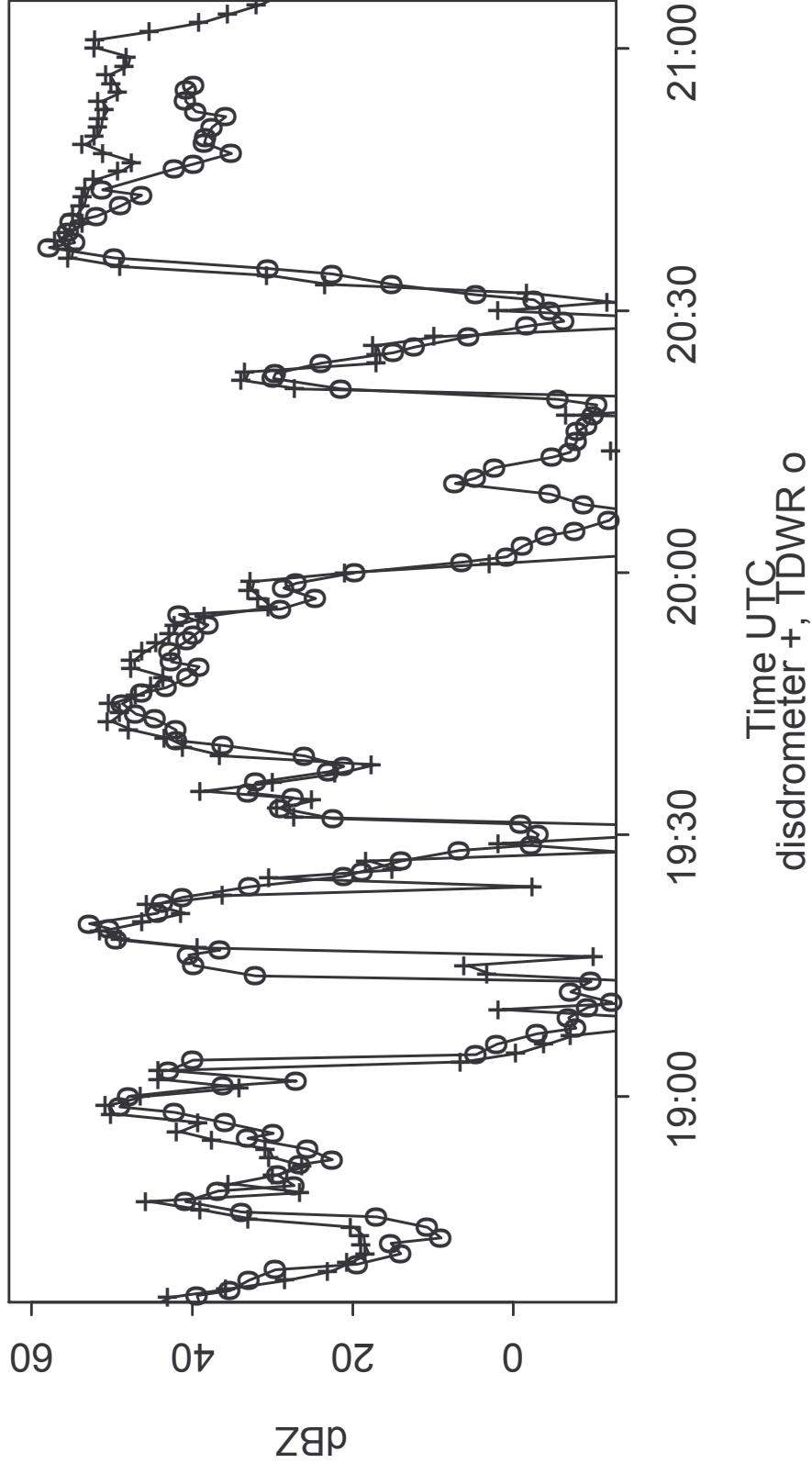


Figure 22.

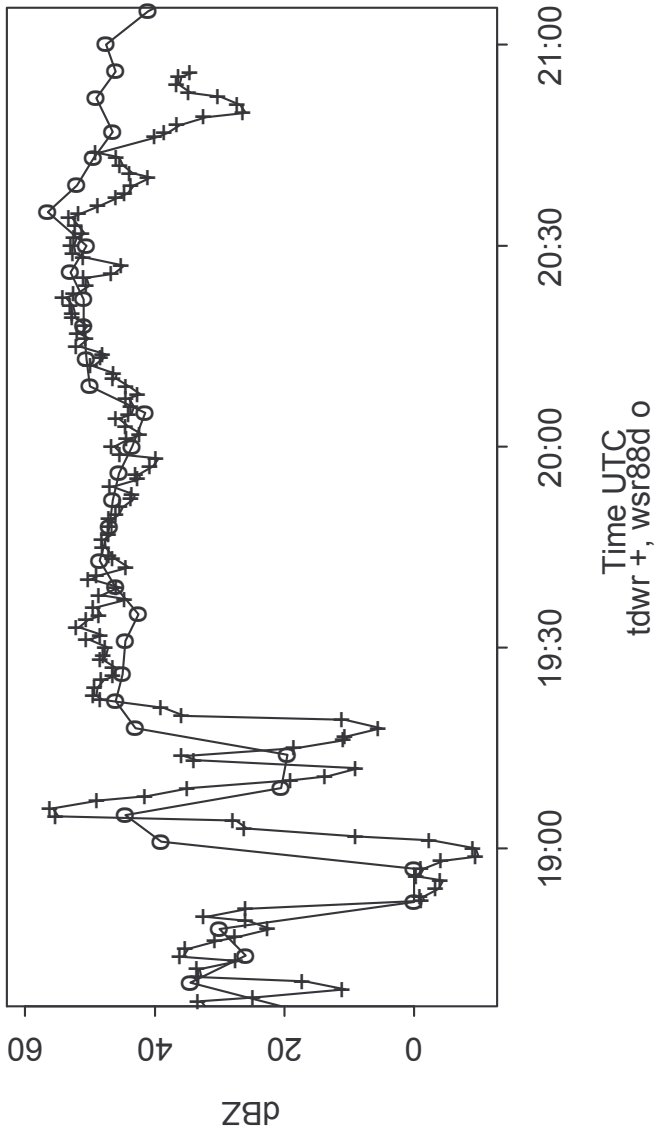


Figure 23.

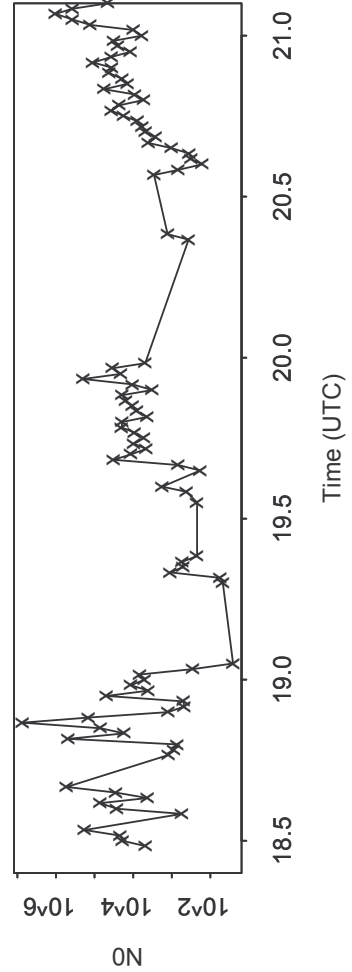
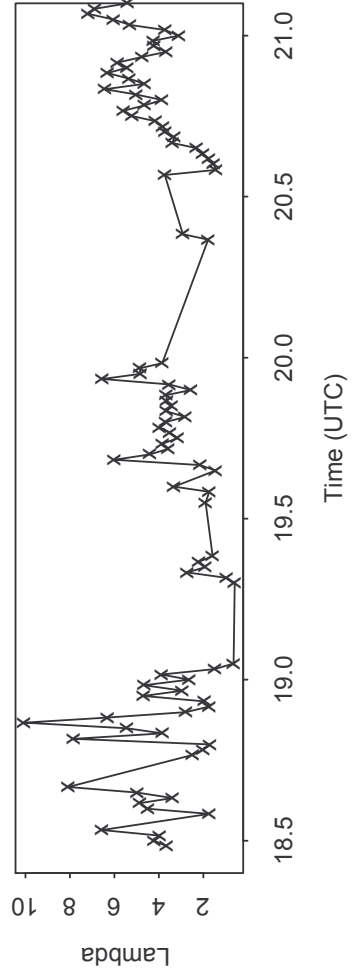
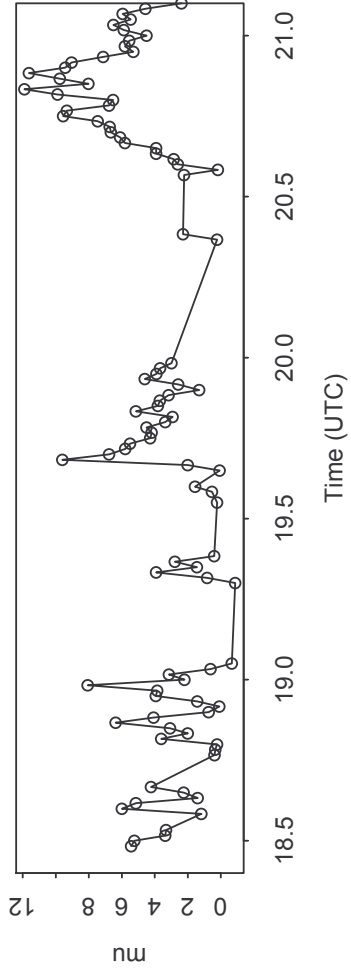


Figure 24.

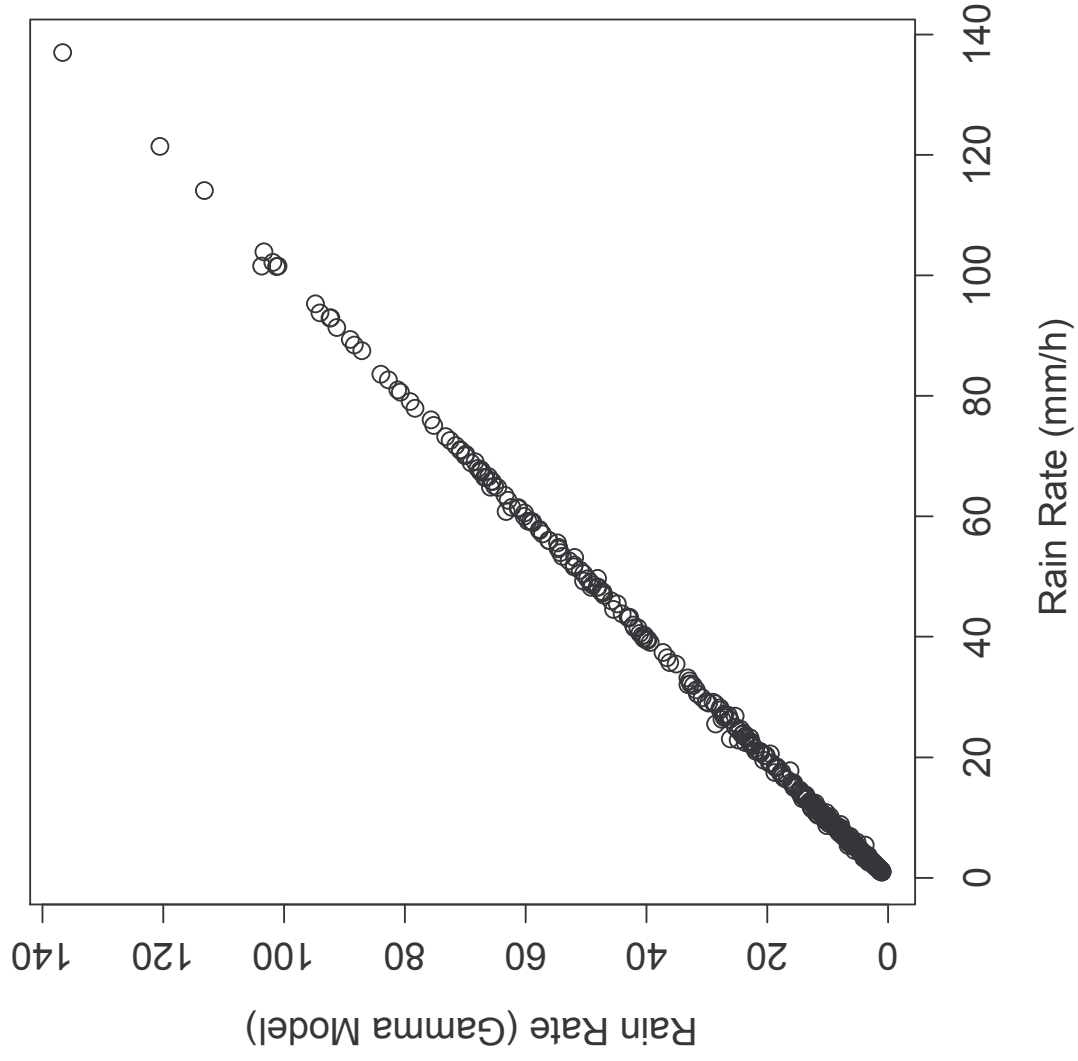


Figure 25.

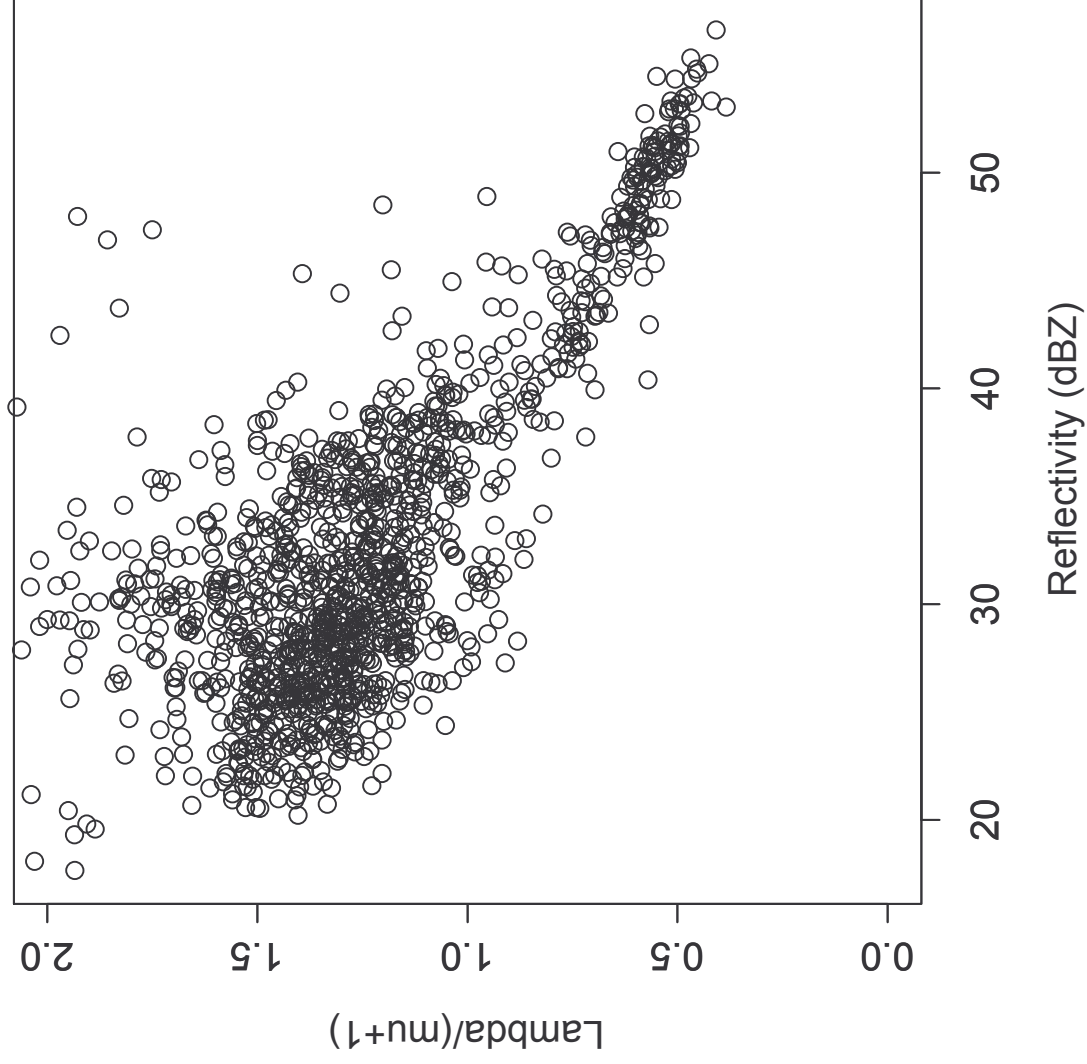


Figure 26.

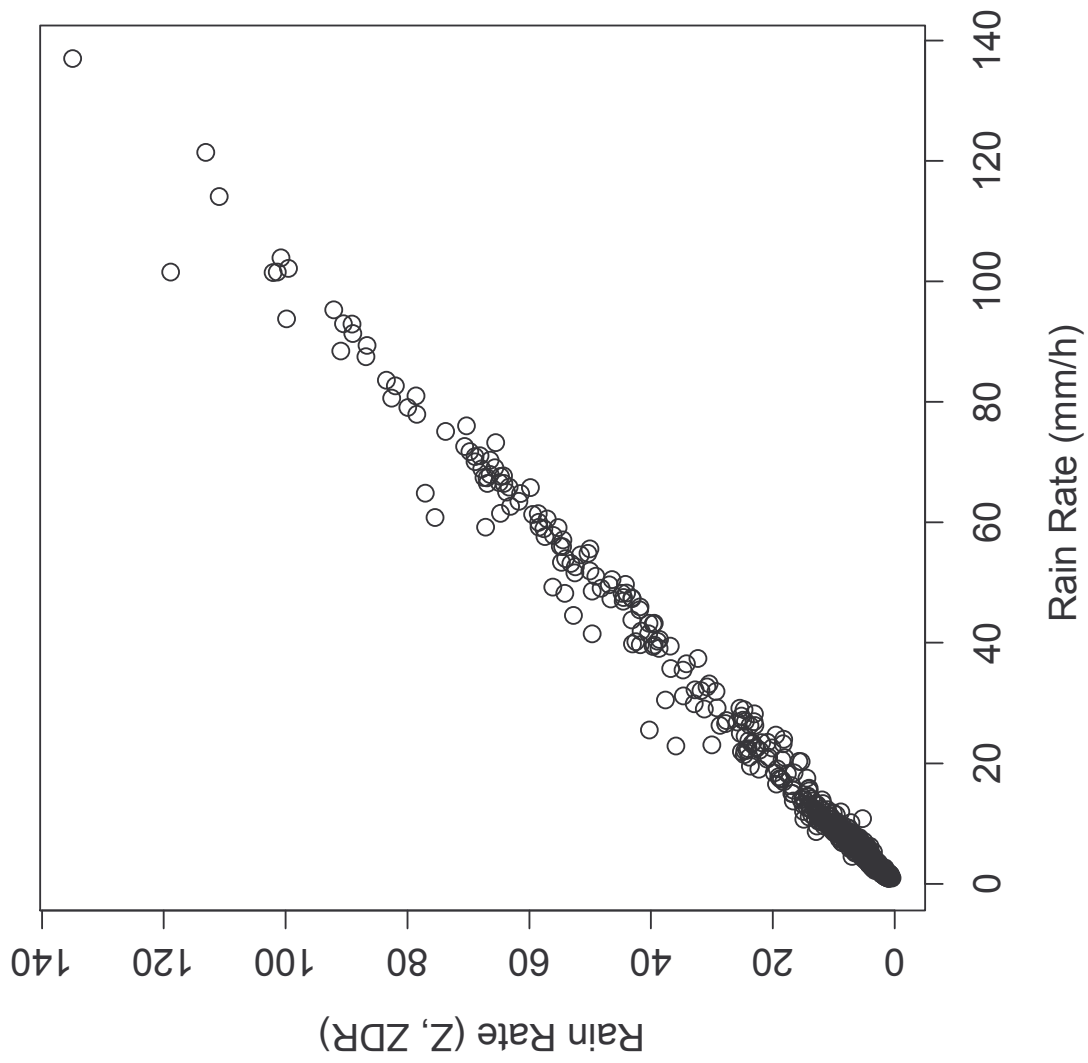


Figure 27.

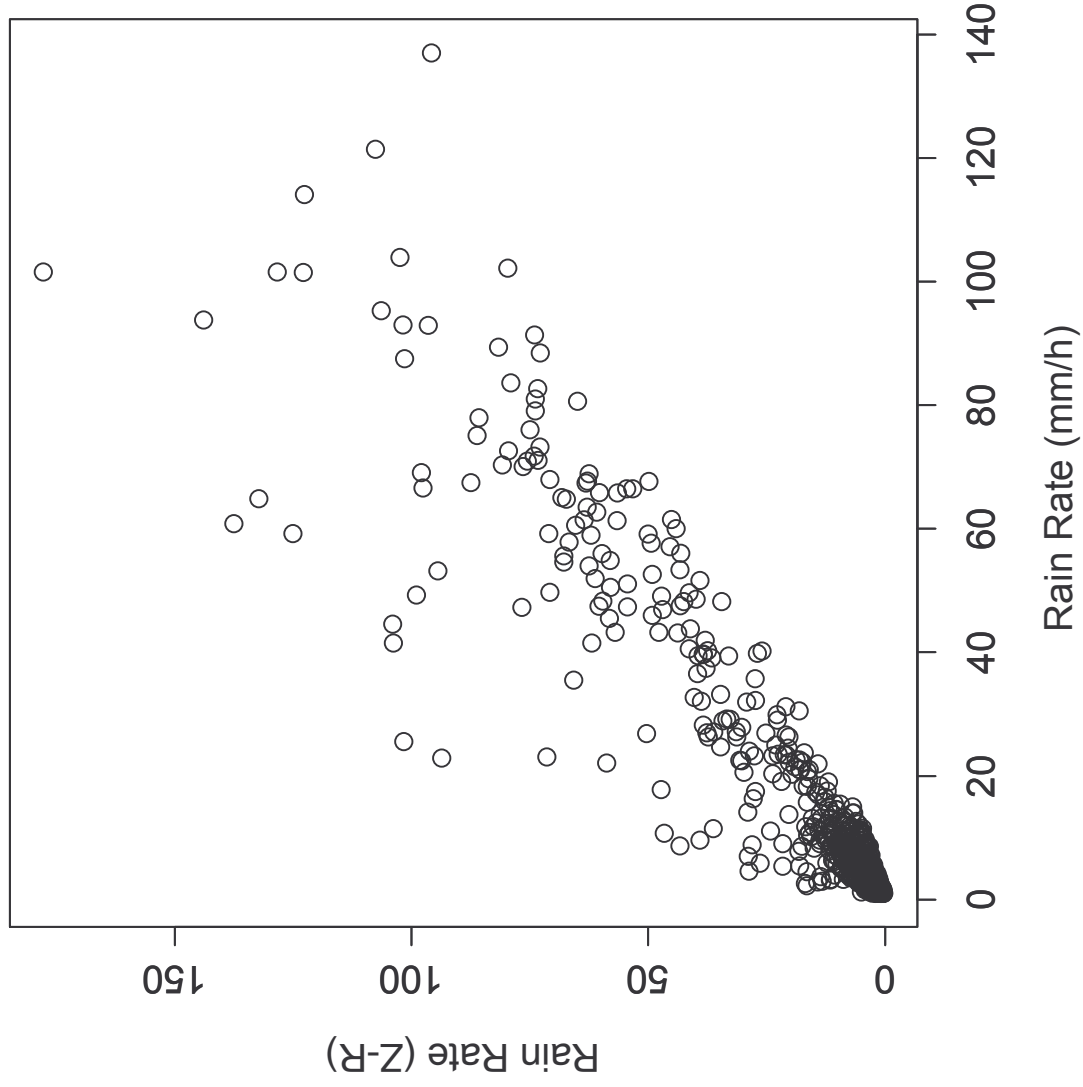


Figure 28.