

Introduction

1.0 Overview

ESPADP Batch Builder is a graphical user interface (GUI) which enables a user to construct a batch input file for ESPADP and run that batch input file.

Chapter 3 of the ESPADP User Manual should be read before reading this manual.

2.0 Notation and Definitions

The following notational conventions are used in this documentation:

- o A GUI component, including panels, menus and button is displayed in **bold**.
- o **Menu1** >> **ItemA** indicates menu item **ItemA** within the menu **Menu1**.
- o <key> indicates the keyboard key, <key>. For example <shift> means the shift key.

The following terms and their definitions are used in this manual and will be displayed in *italics*:

- o *stdout*: This is an abbreviation for standard out which is the terminal from which ESPADP Batch Builder is executed.

3.0 Execution

To run the ESPADP Batch Builder enter:

```
ens -p bbuilder
```

The main window is shown in Figure 3.1.

4.0 Recommended Apps-Defaults Tokens

Since ESPADP Batch Builder runs ESPADP in batch mode all of the apps-defaults tokens necessary for ESPADP should be set prior to running ESPADP Batch Builder.

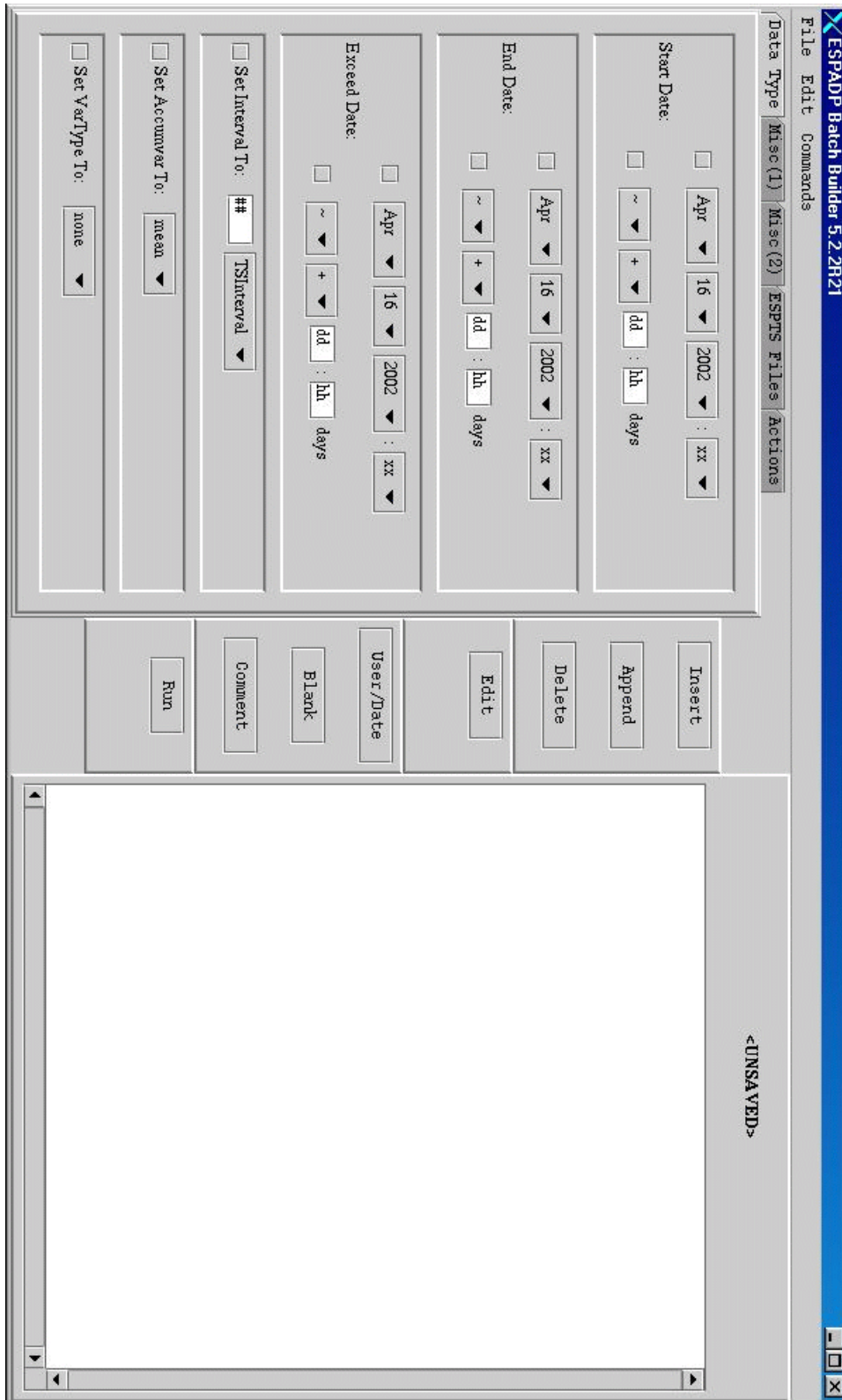


Figure 3.1. ESPADP Batch Builder Main Window.