

**Northern Minnesota, 18-19 June 2024**  
**Annual Exceedance Probabilities (AEPs) for the Highest 6-hour Rainfall Period**

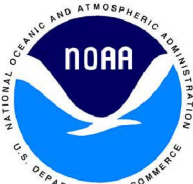
National Water Center  
 Office of Water Prediction, National Weather Service  
 National Oceanic and Atmospheric Administration

<https://www.weather.gov/owp/hdsc>

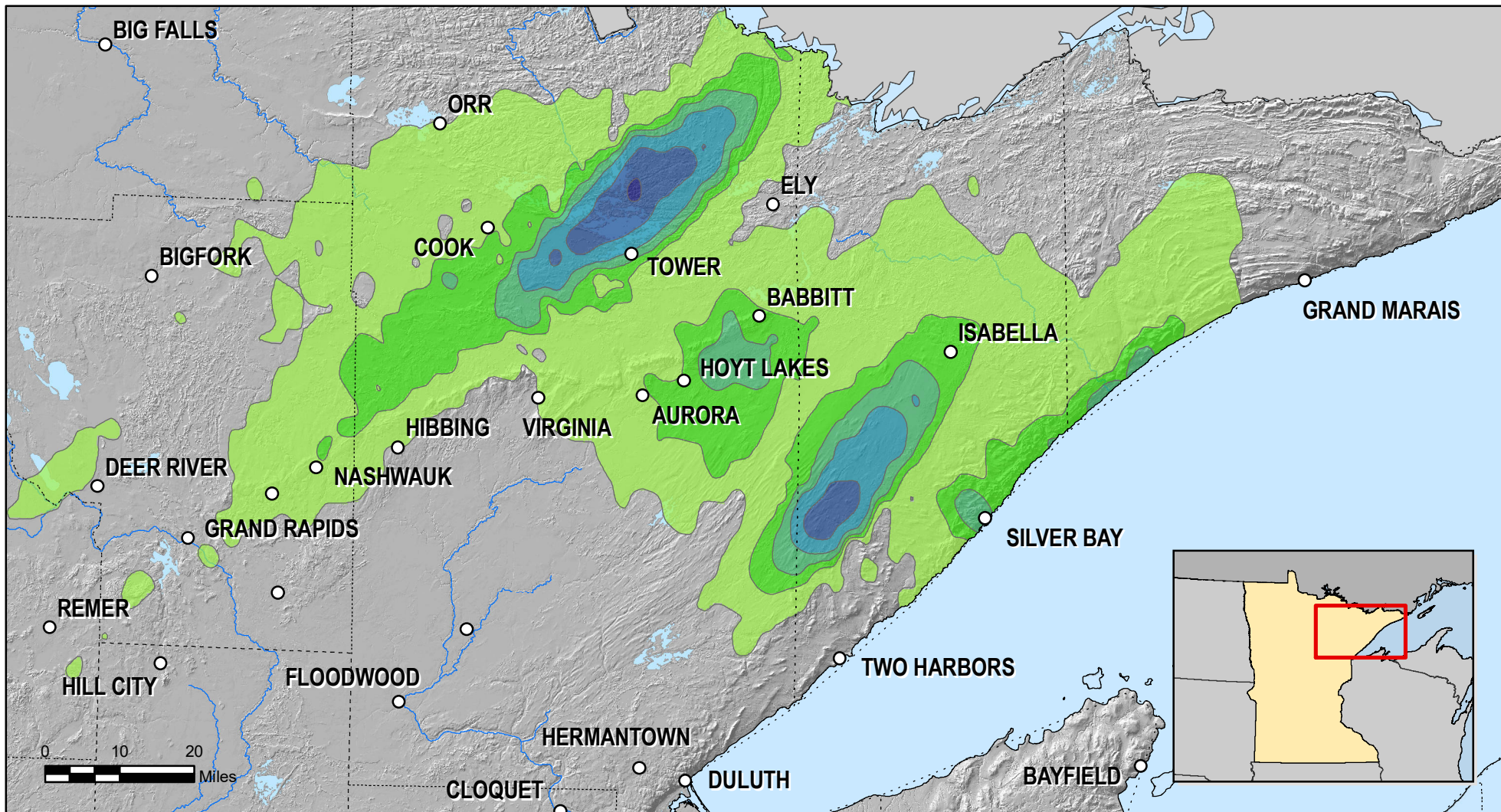
Created 26 June 2024

Precipitation frequency estimates are from NOAA Atlas 14.  
 Rainfall values come from 1-hour Stage IV multi-sensor data.

- > 1/10
- 1/50 - 1/10
- 1/100 - 1/50
- 1/200 - 1/100
- 1/500 - 1/200
- 1/1000 - 1/500
- < 1/1000







**Northern Minnesota, 18-19 June 2024  
Annual Exceedance Probabilities (AEPs) for the Highest 12-hour Rainfall Period**

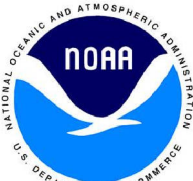
National Water Center  
Office of Water Prediction, National Weather Service  
National Oceanic and Atmospheric Administration

<https://www.weather.gov/owp/hdsc>

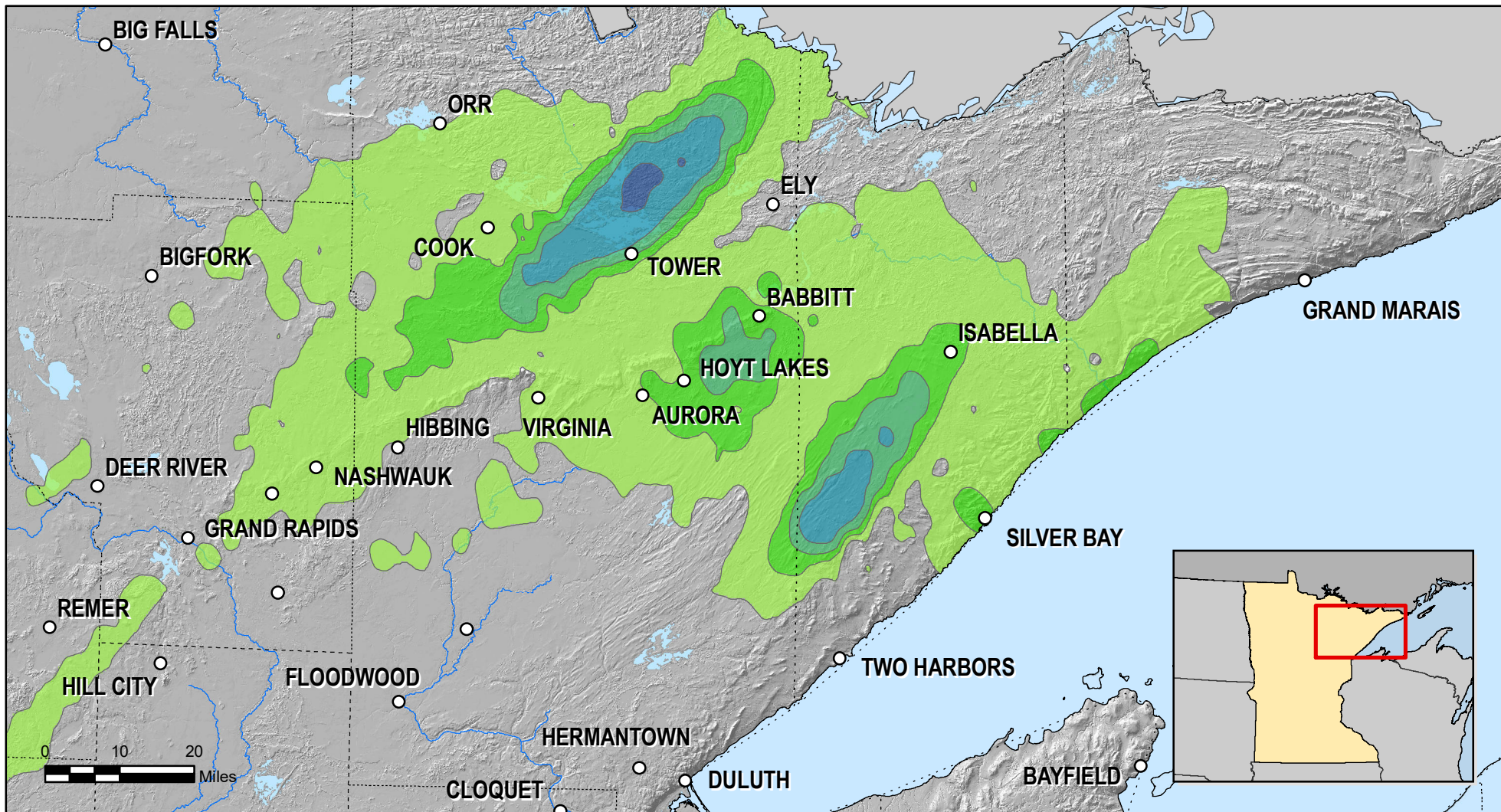
Created 26 June 2024

Precipitation frequency estimates are from NOAA Atlas 14.  
Rainfall values come from 1-hour Stage IV multi-sensor data.

- > 1/10
- 1/50 - 1/10
- 1/100 - 1/50
- 1/200 - 1/100
- 1/500 - 1/200
- 1/1000 - 1/500
- < 1/1000







**Northern Minnesota, 18-19 June 2024  
Annual Exceedance Probabilities (AEPs) for the Highest 24-hour Rainfall Period**

National Water Center  
Office of Water Prediction, National Weather Service  
National Oceanic and Atmospheric Administration

<https://www.weather.gov/owp/hdsc>

Created 26 June 2024

Precipitation frequency estimates are from NOAA Atlas 14.  
Rainfall values come from 1-hour Stage IV multi-sensor data.

- > 1/10
- 1/50 - 1/10
- 1/100 - 1/50
- 1/200 - 1/100
- 1/500 - 1/200
- 1/1000 - 1/500

