

***The Voice of NOAA's  
National Weather Service***

**< Over 1000 Transmitters >**

**Broadcasting Continuous  
Weather Information on the  
Following Frequencies:**

162.400 MHz  
162.425 MHz  
162.450 MHz  
162.475 MHz  
162.500 MHz  
162.525 MHz  
162.550 MHz



NOAA/PA 94062  
Rev January 2025

U.S. Department of Commerce  
National Oceanic and Atmospheric Administration  
National Weather Service

**<http://www.weather.gov/nwr/>**

# NOAA WEATHER RADIO

The Voice of NOAA's National Weather Service

<http://www.weather.gov/nwr>

NOAA Weather Radio is a service of the National Oceanic and Atmospheric Administration (NOAA) of the U.S. Department of Commerce. As the "voice of the National Weather Service," it provides continuous broadcasts (24 hours a day) of the latest weather information from local National Weather Service offices. Weather messages are repeated every 4 to 6 minutes and are routinely updated every 1 to 6 hours or more frequently in rapidly changing local weather or if a nearby natural hazardous or manmade condition exists.



The regular broadcasts are specifically tailored to weather information needs of the people within the service area of the transmitter. For example, in addition to general weather information, stations in coastal areas provide information of interest to mariners. Other specialized information, such as hydrological forecasts and other climate data may be broadcast.

During severe weather, National Weather Service forecasters can interrupt the routine weather broadcasts and insert special warning messages concerning imminent threats to life and property. The forecaster can also add special signals to warnings that trigger "alerting" features of specially equipped receivers. In the simplest case, this signal activates audible or visual alarms, indicating that an emergency condition exists within the broadcast areas of the station being monitored, and alerts the listener to turn up the volume and stay tuned for more information. More sophisticated receivers are automatically turned on and set to an audible volume when an alert is received.

In the most sophisticated alerting system, NOAA Weather Radio Specific Area Message Encoding (SAME), digital coding is employed to activate only those special receivers programmed for specific emergency conditions in specific area, typically a county. SAME can activate specially equipped radio and cable television receivers and provide a short text message that identifies the location and type of emergency. SAME is the primary activator for the FCC Emergency Alert System (EAS).

To program NWR SAME receivers with the proper county(s) and marine area(s) of choice, you need to know the 6-digit SAME code number(s) for that county(s). Once you have your code number(s), follow the manufacturer's directions for programming your NWR SAME receiver. You can obtain your SAME code numbers by dialing:

**888-NWR-SAME (888-697-7263)** – Voice & TTY/TTD Accessible

Under a January 1975 White House policy statement, NOAA Weather Radio was designated the sole Government-operated radio system to provide direct warning into private homes for both

natural disasters and nuclear attack. This concept has been expanded to include warnings for all hazardous conditions that pose a threat to life and safety, both at a local and national level. As a result, NOAA Weather Radio is being better integrated with other National Weather Service systems to provide state and local emergency managers and other warning providers better access to local weather forecast offices, allowing hazard warnings of all types to be broadcast on NOAA Weather Radio within seconds

NOAA Weather Radio currently broadcasts from 1036 stations in fifty states, Puerto Rico, the U.S. Virgin Islands, American Samoa, Guam, and Saipan on seven frequencies in the VHF band, ranging from 162.400 to 162.550 megahertz (MHz). These frequencies are outside the normal AM or FM broadcast bands.

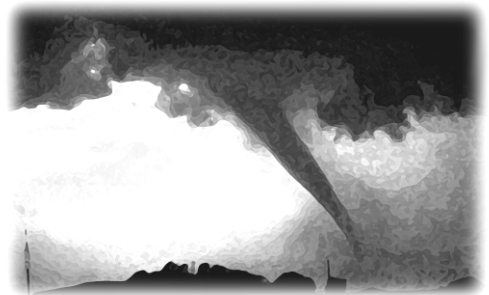
Special radios that receive only NOAA Weather Radio, both with and without special alerting features, are available from numerous manufacturers. In addition, other manufacturers are including NWR capability in a variety of receivers. NOAA Weather Radio capability is currently available on automobile, aircraft, marine, citizens band, and standard AM/FM radios as well as communications receivers, transceivers, scanners, and cable TV.

By nature and design, NOAA Weather Radio coverage is limited to an area within 40 miles of the transmitter. The quality of reception is dictated by transmitter distance, local terrain, and the quality and location of the receiver. In general, those using a high quality receiver on flat terrain or at sea can expect reliable reception beyond 40 miles. Those with standard receivers, surrounded by large buildings in cities and those in mountain valleys may experience little or no reception at considerably less than 40 miles. If possible, a receiver should be tested in the location where it will be used prior to purchase.

NOAA Weather Radio is directly available to a large portion of the U.S. and covers greater than 95 percent of the population.

If you have a question regarding the technical aspects of NOAA Weather Radio such as transmitter location, reception, and characteristics or if you are interested in becoming a partner with the National Weather Service to identify or provide local funding and/or facilities for the installation of a NOAA Weather Radio transmitter, please contact your local National Weather Service Office or send a letter to:

National Weather Service  
Attn: Dissemination Systems Branch, W/DSB  
1325 East-West Highway  
Silver Spring, MD 20910



The following is a listing of operational stations by state. For specific coverage information for your local area please visit our website at:  
<http://www.weather.gov/nwr/>

**ALABAMA**

Anniston .....	162.475
Arab .....	162.525
Auburn .....	162.525
Birmingham .....	162.550
Brewton .....	162.475
Columbus .....	162.400
Cullman .....	162.450
Demopolis .....	162.475
Dozier .....	162.550
Florence .....	162.475
Greenville .....	162.425
Henagar .....	162.500
Huntsville .....	162.400
Jackson .....	162.500
Louisville .....	162.475
Mobile .....	162.550
Montgomery .....	162.400
Oneonta .....	162.425
Selma .....	162.450
Tuscaloosa .....	162.400
Winfield .....	162.525

**ALASKA**

Althorp Peak .....	162.425
Anchorage .....	162.550
Bede Mountain .....	162.450
Bethel .....	162.550
Cape Fanshaw .....	162.425
Cape Gull .....	162.500
Cape Hinchinbrook .....	162.525
Cold Bay .....	162.425
Cordova .....	162.400
Craig .....	162.475
Dillingham .....	162.500
Duffield Peninsula .....	162.525
Duke Island .....	162.450
East Point .....	162.500
Fairbanks .....	162.550
Glennallen .....	162.550
Gravina Island .....	162.525
Haines .....	162.400
Homer .....	162.400
Juneau .....	162.550
Ketchikan .....	162.550
Kodiak .....	162.550
Kotzebue .....	162.550
Manleyville .....	162.500
Marmot Island .....	162.500
Middle Cape .....	162.525
Mt. McArthur .....	162.525
Mt. Robert Barron .....	162.450
Nenana .....	162.400
Ninilchik .....	162.550
Nome .....	162.550
Pillar Mtn. ....	162.525
Point Pigot .....	162.450
Potato Point .....	162.425
Raspberry Island .....	162.425
Rugged Island .....	162.425
Saint Paul Island .....	162.525
Sand Point .....	162.550
Seward .....	162.550
Sitka .....	162.550
Sitkinak Dome .....	162.450
Soldotna .....	162.475
Sukkwana Island .....	162.425

Tuklung Mtn. ....	162.425
Unalaska .....	162.550
Utqiagvik .....	162.550
Valdez .....	162.550
Wasilla .....	162.400
Whittier .....	162.475
Wrangell .....	162.400
Yakutat .....	162.400
Zarembo Island .....	162.450

**AMERICAN SAMOA**

Mt. Oloetele .....	162.550
Pago Pago .....	162.400

**ARIZONA**

Flagstaff .....	162.400
Globe .....	162.500
Grand Canyon .....	162.475
Greer .....	162.525
Kingman .....	162.425
Lake Havasu .....	162.400
Nogales .....	162.500
Payson Gila County N. ....	162.425
Phoenix .....	162.550
Prescott .....	162.525
Safford .....	162.475
Tucson .....	162.400
Window Rock .....	162.550

**ARKANSAS**

Cherokee Village .....	162.475
El Dorado .....	162.525
Fayetteville .....	162.475
Fort Smith .....	162.550
Fountain Hill .....	162.475
Gurdon .....	162.475
Harrison .....	162.525
High Peak .....	162.425
Jonesboro .....	162.550
Little Rock .....	162.550
Marvell .....	162.525
Mena .....	162.400
Morrilton .....	162.475
Mountain View .....	162.450
Russell .....	162.400
Russellville .....	162.525
Springdale .....	162.400
Star City .....	162.400
Yellville .....	162.500

**CALIFORNIA**

Avalon .....	162.525
Bakersfield .....	162.550
Big Rock Ridge .....	162.500
Bishop .....	162.425
Coachella .....	162.400
Coachella / Spanish .....	162.525
Contra Costa County .....	162.425
Conway Summit .....	162.525
El Paso Mtns. ....	162.425
Eureka .....	162.400
Fresno .....	162.400
Grass Valley .....	162.400
Los Angeles .....	162.550
Malibu Marine .....	162.425
Monterey .....	162.550
Monterey Marine .....	162.450
Point Arena .....	162.550
Redding .....	162.550
Sacramento .....	162.550
San Diego .....	162.400
San Diego Marine .....	162.425
San Francisco .....	162.400

San Luis Obispo .....	162.550
San Simeon .....	162.525
Sandberg .....	162.425
Santa Ana .....	162.450
Santa Barbara .....	162.400
Santa Barbara Marine .....	162.475
Sonoma County .....	162.475
Susanville .....	162.500
Ukiah .....	162.525
Victorville .....	162.500
Willow Creek .....	162.450
Yosemite .....	162.450
Yuma .....	162.550

**COLORADO**

Alamosa .....	162.475
Anton .....	162.425
Bethune .....	162.525
Boyero .....	162.450
Canon City .....	162.500
Colorado Springs .....	162.475
Deer Trail .....	162.500
Denver .....	162.550
Dillon .....	162.400
Durango .....	162.425
Eagle .....	162.450
Fort Collins/Ault .....	162.450
Fort Morgan .....	162.525
Fowler .....	162.425
Franktown .....	162.450
Glenwood Springs .....	162.500
Grand Junction .....	162.550
Greeley .....	162.400
La Junta .....	162.500
Lamar .....	162.525
Mead/Longmont .....	162.475
Montrose .....	162.450
North Cottonwood .....	162.500
Pueblo .....	162.400
Springfield .....	162.400
Steamboat Springs .....	162.525
Sterling .....	162.400
Walsenburg .....	162.450
Wray .....	162.475

**CONNECTICUT**

Cornwall .....	162.500
Hartford .....	162.475
Meriden .....	162.400
New London .....	162.550

**DELAWARE**

Lewes .....	162.550
Salisbury .....	162.475

**DISTRICT OF COLUMBIA**

Washington DC .....	162.450
---------------------	---------

**FLORIDA**

Belle Glade .....	162.400
Daytona Beach .....	162.400
East Point .....	162.500
Fort Myers .....	162.475
Fort Pierce .....	162.425
Gainesville .....	162.475
Hialeah Spanish .....	162.500
Inverness .....	162.400
Jacksonville .....	162.550
Key West .....	162.400
Lake City .....	162.400
Largo .....	162.450
Melbourne .....	162.550
Miami .....	162.550

Morrison .....	162.550
Naples .....	162.525
Ocala .....	162.525
Orlando .....	162.475
Palatka .....	162.425
Panama City .....	162.550
Pensacola .....	162.400
Princeton .....	162.425
Salem .....	162.425
Sebring .....	162.500
Sneads .....	162.425
Sumterville .....	162.500
Tallahassee .....	162.400
Tampa Bay .....	162.550
Tea Table Key .....	162.450
Venice .....	162.400
West Palm Beach .....	162.475
Westville .....	162.450

**GEORGIA**

Americus .....	162.425
Ashburn .....	162.450
Athens .....	162.400
Atlanta .....	162.550
Augusta .....	162.550
Baxley .....	162.525
Blakely .....	162.525
Blue Ridge .....	162.475
Brasstown Bald .....	162.500
Brunswick .....	162.425
Buchanan .....	162.425
Chatsworth .....	162.400
Clayton .....	162.450
Cleveland .....	162.525
Eastman .....	162.400
Eatonton .....	162.525
Jesup .....	162.450
La Grange .....	162.450
Macon .....	162.475
Metter .....	162.425
Pelham .....	162.550
Sandersville .....	162.450
Summerville .....	162.450
Thomaston .....	162.500
Toccoa .....	162.425
Valdosta .....	162.500
Washington .....	162.500
Waycross .....	162.475

**GUAM**

Guam .....	162.400
------------	---------

**HAWAII**

Hawaii Kai .....	162.450
Kauai .....	162.400
Kulani Cone .....	162.550
Lihue .....	162.450
Maui .....	162.400
North Kohala .....	162.500
Oahu .....	162.550
South Point .....	162.550

**IDAHO**

Boise .....	162.550
Bonnars Ferry .....	162.500
Burley .....	162.475
Driggs .....	162.450
Grangeville .....	162.450
Lewiston .....	162.550
McCall .....	162.475
Orofino .....	162.500
Payette .....	162.400
Pocatello .....	162.550

Salmon .....	162.500	Marshalltown .....	162.500
Sedgwick Peak .....	162.425	Milford .....	162.550
Sun Valley .....	162.450	Montezuma .....	162.450
Twin Falls .....	162.400	Ottumwa .....	162.500

**ILLINOIS**

Bloomington .....	162.525
Champaign .....	162.550
Chester .....	162.450
Chicago .....	162.550
Crescent City .....	162.500
Crystal Lake .....	162.500
DeKalb .....	162.550
Dixon .....	162.525
Freeport .....	162.450
Galesburg .....	162.400
Hillsboro .....	162.425
Jacksonville .....	162.525
Jerseyville .....	162.450
Kankakee .....	162.525
Lockport .....	162.425
Macomb .....	162.500
Marion .....	162.425
McLeansboro .....	162.400
Newton .....	162.450
Odel .....	162.450
Paris .....	162.525
Peoria .....	162.475
Plano .....	162.400
Princeton .....	162.425
Quad Cities .....	162.550
Rockford .....	162.475
Salem .....	162.475
Shelbyville .....	162.500
Springfield .....	162.400

**INDIANA**

Angola .....	162.425
Bloomington .....	162.450
Edwardsport .....	162.425
Evansville .....	162.550
Fort Wayne .....	162.550
Georgia .....	162.500
Hebron .....	162.450
Indianapolis .....	162.550
Marion .....	162.450
Michigan City .....	162.500
Monticello/Lafayette .....	162.475
Muncie .....	162.425
New Albany .....	162.475
Newport .....	162.425
North Webster .....	162.500
Putnamville .....	162.400
Richmond .....	162.500
Seymour .....	162.525
South Bend .....	162.400

**IOWA**

Burlington .....	162.525
Carroll .....	162.425
Cedar Rapids .....	162.475
Decorah .....	162.525
Delaware .....	162.450
Denison .....	162.550
Des Moines .....	162.550
Essex .....	162.550
Fairfield .....	162.400
Forest City .....	162.500
Fort Dodge .....	162.400
Hancock/Pottawattam .....	162.525
Iowa Falls .....	162.525
Lake Rathbun .....	162.425
Lenox .....	162.450
Maquoketa .....	162.425

**KANSAS**

Abilene .....	162.525
Beaumont .....	162.500
Belvidere .....	162.525
Blue Rapids .....	162.425
Chanute .....	162.400
Concordia .....	162.550
Dighton .....	162.525
Dodge City .....	162.475
Ellsworth .....	162.400
Gem .....	162.400
Great Bend .....	162.500
Halls Summit .....	162.425
Hays .....	162.450
Kirwin .....	162.500
Lenora .....	162.425
Meade .....	162.425
Parker .....	162.525
Saint Joseph .....	162.400
Sharon .....	162.400
Topeka .....	162.475
Tribune .....	162.550
Ulysses .....	162.450
Wichita .....	162.550

**KENTUCKY**

Ashland .....	162.550
Beattyville .....	162.500
Bowling Green .....	162.400
Burkesville .....	162.475
Campbellsville .....	162.525
Covington .....	162.550
East Madison County .....	162.525
Edmonton .....	162.450
Elkron .....	162.450
Elizabethtown .....	162.550
Frankfort .....	162.500
Frenchburg .....	162.475
Harlan .....	162.450
Hazard .....	162.475
Hopkinsville .....	162.450
Horse Cave .....	162.500
Irvine .....	162.475
Jackson .....	162.425
Lexington .....	162.400
London .....	162.475
Madison County .....	162.525
Madisonville .....	162.525
Manchester .....	162.400
Mayfield .....	162.475
Maysville .....	162.425
McKee .....	162.450
Moberly .....	162.525
Monticello .....	162.425
Morehead .....	162.400
Mount Vernon .....	162.425
Owenton .....	162.450
Paintsville .....	162.525
Phelps .....	162.500
Pikeville .....	162.400
Pineville .....	162.525
Somerset .....	162.550

Stanton .....	162.550
West Liberty .....	162.450
West Madison County .....	162.525
Whitesville .....	162.475
Williamsburg .....	162.500

**LOUISIANA**

Alexandria .....	162.475
Baton Rouge .....	162.400
Bogalusa .....	162.525
Buras .....	162.475
Lafayette .....	162.550
Lake Charles .....	162.400
Monroe .....	162.550
Morgan City .....	162.475
Natchitoches .....	162.500
New Orleans .....	162.550
Shreveport .....	162.400

**MAINE**

Caribou .....	162.525
Dresden .....	162.475
Ellsworth .....	162.400
Falmouth .....	162.550
Frenchville .....	162.475
Greenville .....	162.425
Jonesboro Marine .....	162.450
Medybemps .....	162.425
Milo .....	162.550
Springfield .....	162.500
Sugarloaf Mtn .....	162.450

**MARYLAND**

Baltimore .....	162.400
Frostburg .....	162.425
Hagerstown .....	162.475
Sudlersville .....	162.500

**MASSACHUSETTS**

Boston .....	162.475
Bourne/Hyannis .....	162.550
Egremont .....	162.450
Gloucester Marine .....	162.425
Leyden .....	162.425
Mt. Greylock .....	162.525
Worcester .....	162.550

**MICHIGAN**

Adrian / Petersburg .....	162.450
Alpena .....	162.550
Bad Axe .....	162.525
Cannonsburg .....	162.550
Copper Harbor .....	162.500
Crystal Falls .....	162.475
Detroit .....	162.550
Escanaba .....	162.500
Flint .....	162.475
Gaylord .....	162.500
Grand Marais .....	162.425
Hesperia .....	162.475
Houghton .....	162.400
Manistique .....	162.525
Marenisco .....	162.550
Marquette .....	162.550
Mount Pleasant .....	162.525
Munising .....	162.475
Newberry .....	162.450
Onondaga .....	162.400
Ownton .....	162.450
Paintsville .....	162.525
Phelps .....	162.500
Pikeville .....	162.400
Pineville .....	162.525
Sault Ste Marie .....	162.550
Traverse City .....	162.400
West Branch .....	162.450

West Olive .....	162.425
Wolf Lake .....	162.425

**MINNESOTA**

Aitkin .....	162.450
Appleton .....	162.550
Bemidji .....	162.425
Clearwater .....	162.500
Coleraine .....	162.400
Detroit Lakes .....	162.400
Duluth .....	162.550
Elephant Lake .....	162.450
Ely .....	162.500
Fergus Falls .....	162.500
Finland .....	162.425
Grand Rapids .....	162.425
Gun Flint Lake .....	162.525
International Falls .....	162.550
Jeffers .....	162.450
Kensington .....	162.400
LaCrescent .....	162.550
Lake Bronson .....	162.525
Leader .....	162.550
Long Prairie .....	162.525
Mankato .....	162.400
Minneapolis/St. Paul .....	162.550
New Ulm .....	162.525
Norwood .....	162.425
Olivia .....	162.400
Park Rapids .....	162.475
Pine City .....	162.425
Red Wing .....	162.450
Rochester .....	162.475
Rosevelt .....	162.450
Russell .....	162.500
St. Cloud .....	162.400
Thief River Falls .....	162.550
Virginia .....	162.475
Waubun .....	162.450
Willmar .....	162.475

**MISSISSIPPI**

Aberdeen .....	162.450
Ackerman .....	162.475
Booneville .....	162.400
Bude .....	162.550
Carthage .....	162.500
Gulfport .....	162.400
Hattiesburg .....	162.475
Inverness .....	162.425
Jackson .....	162.400
Leakesville .....	162.425
Magee .....	162.525
Meridian .....	162.550
Oxford .....	162.550

**MISSOURI**

Alton .....	162.500
Avilla .....	162.425
Bloomfield .....	162.400
Bourbon .....	162.525
Branson .....	162.550
Cameron .....	162.475
Cape Girardeau .....	162.550
Carrollton .....	162.450
Cassville .....	162.500
Clinton .....	162.500
Columbia .....	162.400
Crocker .....	162.500
Doniphan .....	162.450
El Dorado Springs .....	162.475
Eldon .....	162.550
Forland .....	162.400

Federicktown .....	162.500	Sidney .....	162.500	Watertown .....	162.475	Atoka .....	162.500
Gainesville .....	162.425	Superior .....	162.525	White Hill .....	162.525	Bartlesville .....	162.425
Hannibal .....	162.475	Trenton .....	162.500			Broken Bow .....	162.450
Hawk Point .....	162.425	Valentine .....	162.450			Chickasha .....	162.450
Hermitage .....	162.450	Yankton .....	162.500			Clinton .....	162.525
Jamestown .....	162.425					Enid .....	162.475
Joplin .....	162.550					Grove .....	162.525
Kansas City .....	162.550					Guymon .....	162.500
La Plata .....	162.525					Lawton .....	162.550
Lancaster .....	162.550					McAlester .....	162.475
Maryville .....	162.425					Oklahoma City .....	162.400
Medill .....	162.450					Oktaha .....	162.525
Neosho .....	162.450					Ponca City .....	162.450
Piedmont .....	162.425						
St. Louis .....	162.550					Stillwater .....	162.500
Summersville .....	162.475					Tulsa .....	162.550
Trenton .....	162.500					Wewoka .....	162.550
Wardell .....	162.525					Woodward .....	162.500
West Plains .....	162.525						
<b>MONTANA</b>						<b>OREGON</b>	
Baker .....	162.550					Bend/Redmond .....	162.500
Belgian Hill .....	162.500					Brookings .....	162.550
Billings .....	162.550					Burns Butte .....	162.475
Bozeman .....	162.500					Cape Blanco .....	162.425
Broadus .....	162.425					Carney Butte .....	162.475
Browning .....	162.525					Coos Bay .....	162.400
Butte .....	162.550					Enterprise .....	162.425
Circle .....	162.550					Eugene .....	162.400
Dillon .....	162.475					Florence .....	162.500
Ekalaka .....	162.475					Fossil .....	162.550
Forsyth .....	162.525					Heppner .....	162.425
Glasgow .....	162.400					John Day .....	162.500
Glendive .....	162.475					Klamath Falls .....	162.550
Glentana .....	162.525					Medford .....	162.400
Great Falls .....	162.550					Mt Hebo .....	162.525
Hardin .....	162.450					Mt. Ashland .....	162.475
Havre .....	162.400					Neahkahnie .....	162.425
Helena .....	162.400					Newport .....	162.550
Jordan .....	162.500					Portland .....	162.550
Kalispell .....	162.550					Reedsport .....	162.525
Lewistown .....	162.500					Roseburg .....	162.550
Livingston .....	162.525					Salem .....	162.475
Malta .....	162.475					Spout Springs .....	162.400
Miles City .....	162.400					The Dalles .....	162.400
Missoula .....	162.400					Tillamook .....	162.475
Plentywood .....	162.475						
Poplar .....	162.425						
Ryegate .....	162.450						
Scobey .....	162.450						
Wibaux .....	162.500						
Winnett .....	162.400						
<b>NEBRASKA</b>						<b>NORTH CAROLINA</b>	
Albion .....	162.500					Asheville .....	162.400
Bassett .....	162.475					Buck Mountain .....	162.500
Beatrice .....	162.450					Cape Hatteras .....	162.475
Cambridge .....	162.525					Chapel Hill .....	162.550
Chadron .....	162.525					Charlotte .....	162.475
Columbus .....	162.450					Elerbe .....	162.400
Grand Island .....	162.400					Gamer .....	162.450
Holdrege .....	162.475					Henderson .....	162.500
Lexington .....	162.425					Linville .....	162.450
Lincoln .....	162.475					Mamie .....	162.425
Merna .....	162.500					Margarettsville .....	162.450
Merriman .....	162.400					Mount Jefferson .....	162.500
Mullen .....	162.425					New Bern .....	162.400
Norfolk .....	162.550					Robbinsville .....	162.525
North Platte .....	162.550					Rocky Mount .....	162.475
Omaha .....	162.400					Saint Pauls .....	162.475
Ord .....	162.525					Statesville .....	162.525
Oshkosh .....	162.525					Warsaw .....	162.425
Scottsbluff .....	162.475					Windsor .....	162.525
Shubert .....	162.500					Winnabow .....	162.550
						Winston-Salem .....	162.400
						<b>NORTH DAKOTA</b>	
						Bismarck .....	162.475
						Cavalier .....	162.450
						Dickinson .....	162.400
						Fargo .....	162.475
						Fort Ransom .....	162.525
						Grand Forks .....	162.475
						Jamestown .....	162.550
						Langdon .....	162.500
						Minot .....	162.400
						New Town .....	162.525
						Petersburg .....	162.400
						Rolla .....	162.475
						Scranton .....	162.525
						Sheyenne .....	162.525
						Steele .....	162.400
						Webster .....	162.425
						Williston .....	162.550
						Willow City .....	162.450
						<b>NORTHERN MARIANA ISLANDS</b>	
						Saipan .....	162.550
						<b>OHIO</b>	
						Akron .....	162.400
						Athens .....	162.425
						Bridgeport .....	162.525
						Carey .....	162.525
						Chillicothe .....	162.500
						Cleveland .....	162.550
						Columbus .....	162.550
						Dayton .....	162.475
						Grafton .....	162.500
						High Hill .....	162.475
						Lima .....	162.400
						Mansfield .....	162.450
						Marietta .....	162.400
						New Philadelphia .....	162.425
						Otway .....	162.525
						Sandusky .....	162.400
						Toledo .....	162.500
						Youngstown .....	162.500
						<b>OKLAHOMA</b>	
						Altus .....	162.425
						Antlers .....	162.400
						Ardmore .....	162.525
						<b>PUERTO RICO</b>	
						Maricao .....	162.550
						San Juan .....	162.400

RHODE ISLAND  
Providence ..... 162.400

SOUTH CAROLINA

Aiken ..... 162.450  
Aynor ..... 162.400  
Barnwell ..... 162.500  
Beaufort ..... 162.450  
Charleston ..... 162.550  
Cheraw ..... 162.450  
Columbia ..... 162.400  
Cross ..... 162.475  
Florence ..... 162.550  
Georgetown ..... 162.500  
Greenville ..... 162.550  
Kirksey ..... 162.425  
Orangeburg ..... 162.525  
Rock Hill ..... 162.425  
Savannah ..... 162.400  
Sumter ..... 162.425

SOUTH DAKOTA

Aberdeen ..... 162.475  
Arlington ..... 162.525  
Faith ..... 162.475  
Firesteel ..... 162.425  
Hot Springs ..... 162.425  
Lead ..... 162.525  
Lowry ..... 162.500  
Mitchell ..... 162.450  
Philip ..... 162.450  
Pickstown ..... 162.425  
Pierre ..... 162.400  
Porcupine ..... 162.500  
Rapid City ..... 162.550  
Reliance ..... 162.525  
Sioux Falls ..... 162.400  
South Shore ..... 162.425  
Wessington ..... 162.550  
White River ..... 162.550

TENNESSEE

Bristol ..... 162.550  
Centerville ..... 162.450  
Chattanooga ..... 162.550  
Clarksville ..... 162.500  
Clifton ..... 162.500  
Cookeville ..... 162.400  
Dyersburg ..... 162.500  
Hickman ..... 162.500  
Jackson ..... 162.550  
Knoxville ..... 162.475  
La Follette ..... 162.450  
Lafayette ..... 162.525  
Lawrenceburg ..... 162.425  
Lobelville ..... 162.525  
Memphis ..... 162.475  
Nashville ..... 162.550  
Shelbyville ..... 162.475  
Spencer ..... 162.450  
Vale ..... 162.450  
Waverly ..... 162.400  
Winchester ..... 162.525

TEXAS

Abilene ..... 162.400  
Alpine ..... 162.550  
Amarillo ..... 162.550  
Austin ..... 162.400  
Bay City ..... 162.425  
Beaumont ..... 162.475  
Big Spring ..... 162.475  
Brownsville ..... 162.550

Bryan ..... 162.550  
Burkeville ..... 162.425  
Carrizo Springs ..... 162.550  
Center ..... 162.525  
Childress ..... 162.525  
Cisco ..... 162.500  
Coleman ..... 162.475  
Corpus Christi ..... 162.550  
Corsicana ..... 162.525  
Cumby ..... 162.500  
Dalhart ..... 162.425  
Dallas ..... 162.400  
Del Rio ..... 162.400  
D'Hanis ..... 162.525  
Dickens ..... 162.500  
Dilley ..... 162.500  
El Paso ..... 162.475  
El Paso Spanish ..... 162.550  
Fort Worth ..... 162.550  
Galveston ..... 162.550  
Gilmer ..... 162.425  
Gonzales ..... 162.525  
Guadalupe Mt Nat'l. Park ..... 162.525  
Junction ..... 162.475  
Kerrville ..... 162.450  
La Grange ..... 162.500  
Laredo ..... 162.475  
Llano ..... 162.425  
Lubbock ..... 162.400  
Lufkin ..... 162.550  
Marietta ..... 162.525  
Miami ..... 162.450  
Midland/Odessa ..... 162.400  
Milano ..... 162.525  
Mineral Wells ..... 162.525  
Muenster ..... 162.425  
New Taiton ..... 162.450  
Onalaska ..... 162.500  
Ozona ..... 162.500  
Palestine ..... 162.450  
Paris ..... 162.550  
Pecos ..... 162.450  
Perryton ..... 162.475  
Pharr ..... 162.400  
Pharr Spanish ..... 162.475  
Plainview ..... 162.450  
Port O'Connor ..... 162.475  
Richland Springs ..... 162.525  
Richmond ..... 162.475  
Rio Grande City ..... 162.425  
Riviera ..... 162.525  
San Angelo ..... 162.550  
San Antonio ..... 162.550  
Santa Maria Spanish ..... 162.450  
Sequin ..... 162.475  
Seminole ..... 162.425  
Sherman ..... 162.475  
Stephenville ..... 162.450  
Stinnett ..... 162.400  
Stratford ..... 162.525  
Summerfield ..... 162.500  
Sweetwater ..... 162.425  
Texarkana ..... 162.550  
Three Rivers ..... 162.450  
Throckmorton ..... 162.425  
Tomball ..... 162.400  
Tyler ..... 162.475  
Uvalde ..... 162.425  
Victoria ..... 162.400  
Waco ..... 162.475  
Wichita Falls ..... 162.475

UTAH

Bear Lake ..... 162.500  
Castle Dale ..... 162.500

Coalville / Park City ..... 162.475  
Escalante ..... 162.425  
Lake Powell ..... 162.550  
Logan ..... 162.400  
Manti ..... 162.425  
Milford/Cedar City ..... 162.400  
Moab ..... 162.475  
Monticello ..... 162.450  
Salt Lake City ..... 162.550  
St. George ..... 162.475  
Tabiona ..... 162.550  
Tooele (South Mountain) ..... 162.450  
Tooele (Vernon Hills) ..... 162.525  
Vernal ..... 162.400  
Wendover ..... 162.475

VERMONT

Burlington ..... 162.400  
Castleton ..... 162.500  
St. Johnsbury ..... 162.425  
Windsor ..... 162.475

VIRGIN ISLANDS

St. Thomas ..... 162.450

VIRGINIA

Accomack ..... 162.525  
Coveseville ..... 162.450  
Fredericksburg ..... 162.425  
Heathsville ..... 162.400  
Lynchburg ..... 162.550  
Manassas ..... 162.550  
Norfolk ..... 162.550  
Providence Forge ..... 162.500  
Richlands ..... 162.425  
Richmond ..... 162.475  
Roanoke ..... 162.475  
Sand Mtn ..... 162.450  
South Boston ..... 162.525

WASHINGTON

Astoria ..... 162.400  
Capitol Peak ..... 162.475  
Cle Elum ..... 162.400  
Davis Peak ..... 162.525  
Dayton ..... 162.525  
Forks ..... 162.425  
H Street - Blaine Area ..... 162.525  
Neah Bay ..... 162.550  
Okanogan ..... 162.525  
Plymouth ..... 162.425  
Puget Sound Marine ..... 162.425  
Randle ..... 162.425  
Richland ..... 162.450  
Seattle ..... 162.550  
Spokane ..... 162.400  
Wenatchee ..... 162.475  
Yakima ..... 162.550

WEST VIRGINIA

Backbone Mountain ..... 162.450  
Beckley ..... 162.550  
Charleston ..... 162.400  
Clarksburg ..... 162.550  
Garfield ..... 162.500

Gilbert ..... 162.475  
Baraboo ..... 162.500  
Hinton ..... 162.425  
Monterville ..... 162.525  
Moorefield ..... 162.400  
Morgantown ..... 162.475  
Sutton ..... 162.450

WISCONSIN

Ashland ..... 162.525  
Baraboo ..... 162.450  
Black River Falls ..... 162.500  
Coloma ..... 162.400  
Crandon ..... 162.450  
Dubuque ..... 162.400  
Fond Du Lac ..... 162.500  
Green Bay ..... 162.550  
Gresham ..... 162.500  
Janesville ..... 162.425  
Ladysmith ..... 162.550  
Madison ..... 162.550  
Menomonie ..... 162.400  
Milwaukee ..... 162.400  
New London ..... 162.525  
Park Falls ..... 162.500  
Prairie Du Chien ..... 162.500  
Racine ..... 162.450  
Rhineland ..... 162.400  
Richland Center ..... 162.475  
Sheboygan ..... 162.525  
Sister Bay ..... 162.425  
Spooner ..... 162.475  
Tomah ..... 162.525  
Wausau ..... 162.475  
Wausaukee ..... 162.400  
Winona ..... 162.425  
Withee ..... 162.425

WYOMING

Afton ..... 162.475  
Casper ..... 162.400  
Cheyenne ..... 162.550  
Cody ..... 162.400  
Dubois ..... 162.450  
Elk Plaza ..... 162.425  
Evanston ..... 162.450  
Gillette ..... 162.500  
Glendo ..... 162.450  
Grant Village ..... 162.450  
Jackson ..... 162.525  
Kaycee ..... 162.550  
Kemmerer ..... 162.525  
Lander ..... 162.475  
Newcastle ..... 162.475  
Pinedale ..... 162.500  
Rawlins ..... 162.425  
Rock Springs ..... 162.550  
Sheridan ..... 162.475  
Thermopolis ..... 162.500  
Worland ..... 162.525

As of January 2025 NOAA is operating 1036 stations across the United States and its territories.

The National Weather Service requests your assistance in reporting any outages of NOAA Weather Broadcast Stations.

Please use our Toll Free Number (888) 697-7263 or send an Email to [nwrouting@noaa.gov](mailto:nwrouting@noaa.gov) to report the outage.

# NOAA Weather Radio RF Coverage

January 2025

Guam and the  
Marianas

Hawaii

American Samoa

Alaska

Puerto Rico  
&  
Virgin Islands

Covered Areas

1036 Stations

