



Drought Information Statement

For East Tennessee, Southwest Virginia, and Southwest North Carolina

Valid January 4, 2024

Issued By: WFO Morristown, TN

Contact Information: sr-mrx.webmaster@noaa.gov

- This product will be updated in the next week or sooner if drought conditions change significantly.
- Please see all currently available products at <https://drought.gov/drought-information-statements>.
- Please visit <https://www.weather.gov/mrx/DroughtInformationStatement> for previous statements.





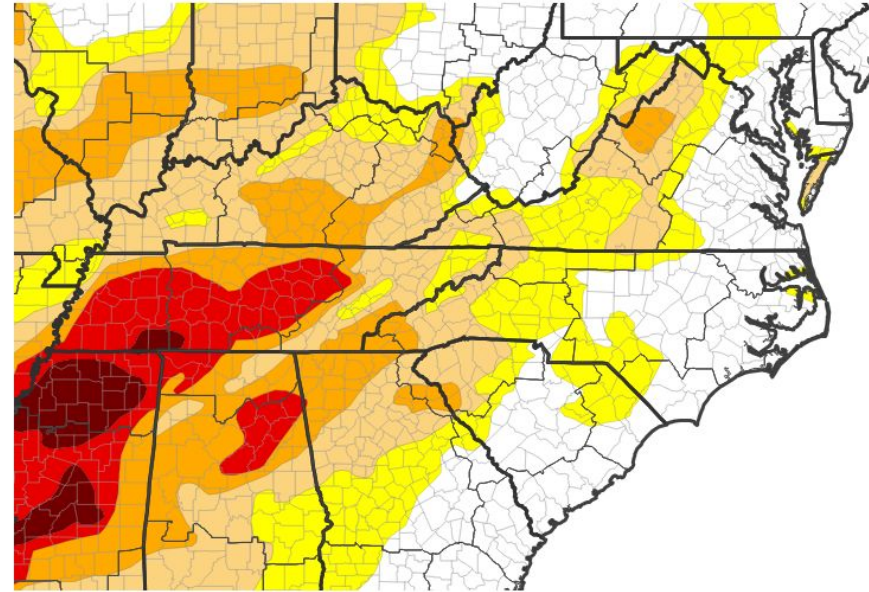
U.S. Drought Monitor

Link to the [latest U.S. Drought Monitor](#) for the NWS Morristown CWA

- **Drought intensity and Extent**

- **D4 (Exceptional Drought):** None.
- **D3 (Extreme Drought):** Extreme western Plateau.
- **D2 (Severe Drought):** Southeast Tennessee, Cherokee and Clay counties of North Carolina, and parts of the Cumberland Plateau.
- **D1 (Moderate Drought):** Much of the northern Plateau, central and northeast Tennessee, and southwest Virginia.
- **D0: (Abnormally Dry):** Parts of southwest Virginia and northeast Tennessee to Knoxville and southwest.

U.S. Drought Monitor



U.S. Drought Monitor



Source(s): NDMC, NOAA, USDA; image courtesy of Drought.gov

Data Valid: 01/02/24



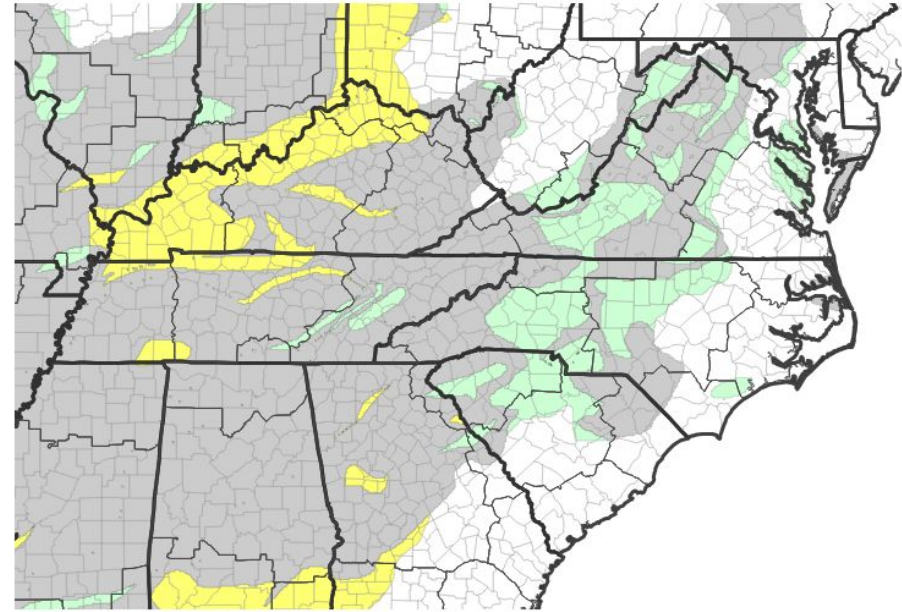


Recent Change in Drought Intensity

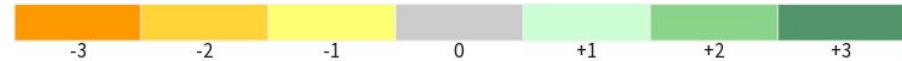
Link to the latest 1-week change map for the Southern Appalachians

- Four Week Drought Monitor Class Change.
 - **Drought Worsened:** None
 - **No Change:** Most places outside of the Plateau and central Valley
 - **Drought Improved:** Portions of the Plateau and central and southern Valley

U.S. Drought Monitor 1-Week Change Map



Drought Change Since Last Week



Source(s): NDMC, NOAA, USDA; image courtesy of Drought.gov

Data Valid: 01/02/24

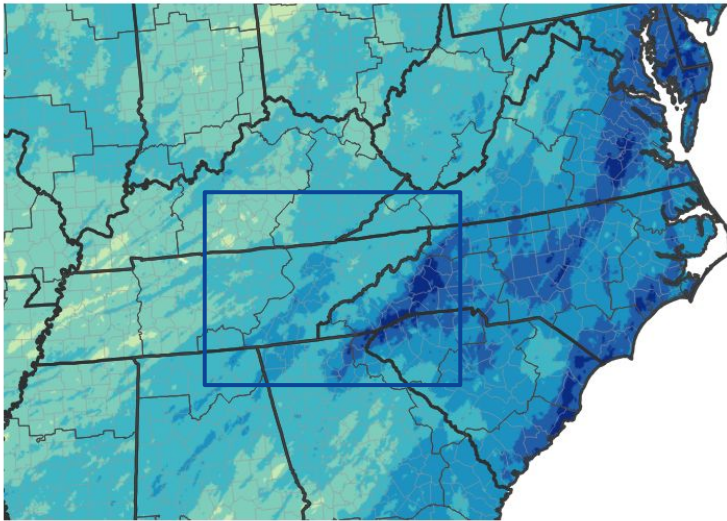




Precipitation

- Precipitation has been slightly below normal in most places.

30-Day Precipitation Accumulations (Inches)



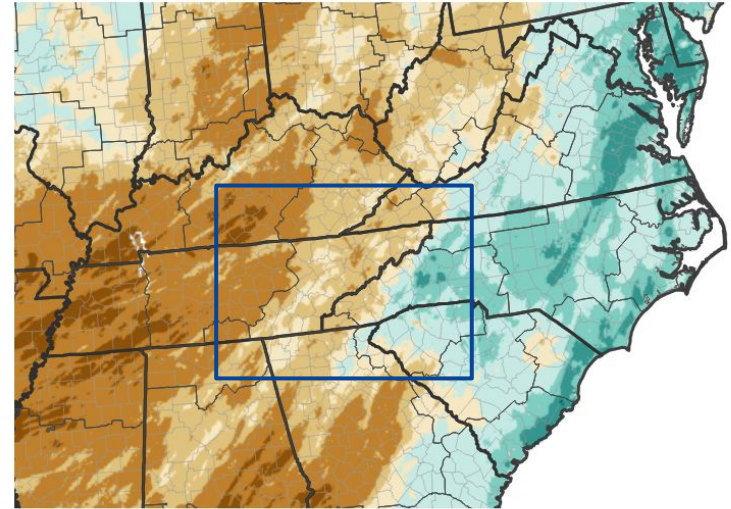
Inches of Precipitation



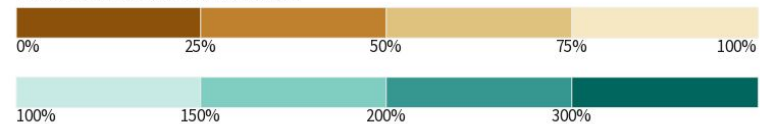
Source(s): National Weather Service Multi-Radar Multi-Sensor System;
image courtesy of Drought.gov

Last Updated: 01/04/24

30-Day Percent of Normal Precipitation



Percent of Normal Precipitation (%)



Source(s): National Weather Service Multi-Radar Multi-Sensor System;
image courtesy of Drought.gov

Last Updated: 01/04/24

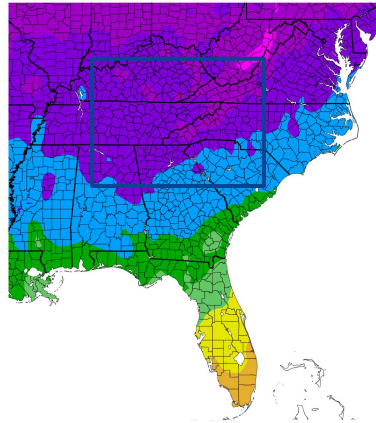




Temperature

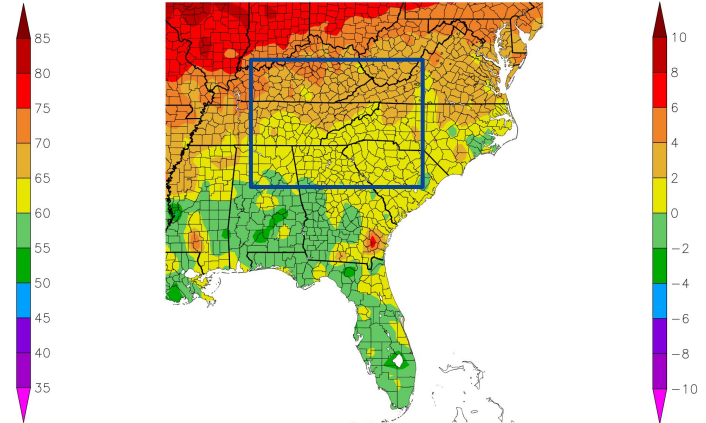
- Temperatures have been above normal for the last 4 weeks.

Temperature (F)
12/5/2023 – 1/3/2024



Generated 1/4/2024 at HPRCC using provisional data.

Departure from Normal Temperature (F)
12/5/2023 – 1/3/2024



NOAA Regional Climate Centers 24 at HPRCC using provisional data.

NOAA Regional Climate Centers





Summary of Impacts

Links: See/submit [Condition Monitoring Observer Reports \(CMOR\)](#) and view the [Drought Impacts Reporter](#)

Hydrologic Impacts

- Stream flows continue to be near normal for most locations.

Agricultural Impacts

- Soil moisture is near normal for agriculture.

Fire Hazard Impacts

- Tennessee Forestry has reported little to no fire activity.

Other Impacts

- Stay tuned for future updates.

Mitigation Actions

- Please refer to your municipality and/or water provider for mitigation information. Continue to abide by local burning bans and regulations.

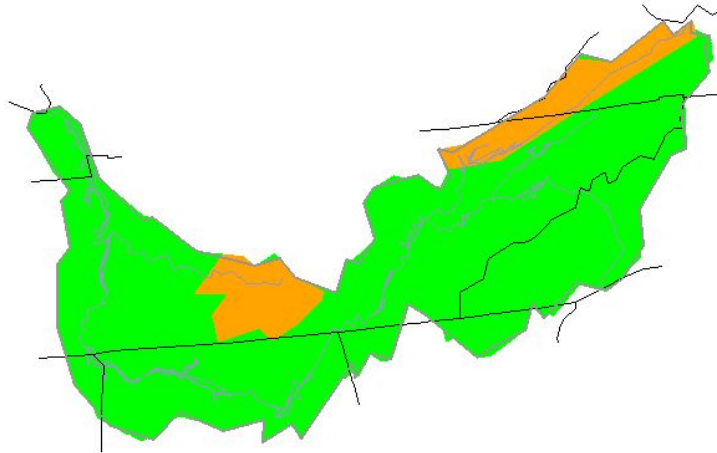




Hydrologic Conditions and Impacts

Wednesday, January 03, 2024

- Streamflows have improved over much of the area.



Explanation - Percentile classes							
Low	<10	10-24	25-75	76-90	>90	High	No Data
	Much below normal	Below normal	Normal	Above normal	Much above normal		

Image Caption: USGS 7 day average streamflow HUC map valid 12/27/2023.

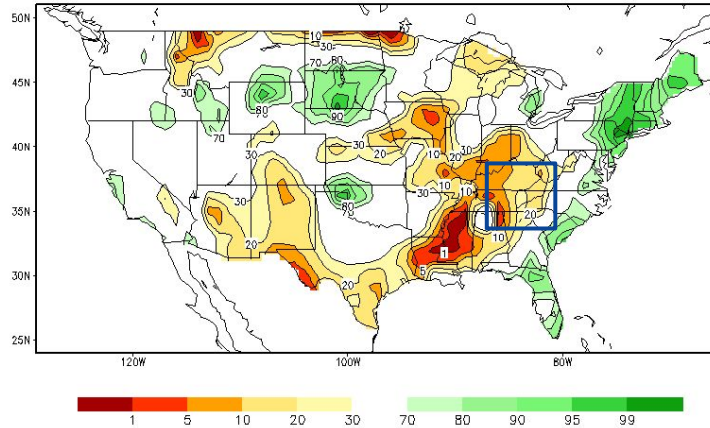




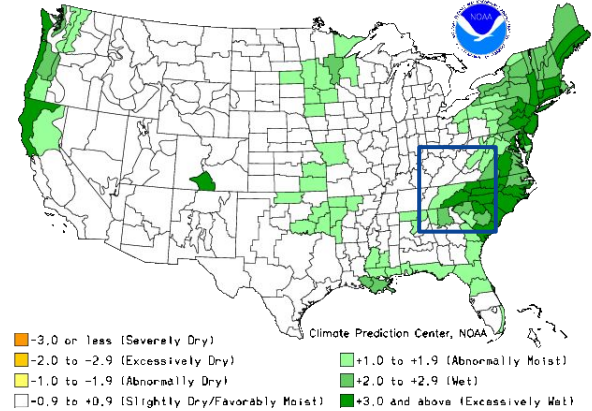
Agricultural Impacts

- Soil moisture has improved.
- Recent dry weather has resulted in some drier soil conditions over the past week.

Calculated Soil Moisture Ranking Percentile
JAN 03, 2024



Crop Moisture Index by Division
Weekly Value for Period Ending DEC 30, 2023
Short Term Need vs. Available Water in a Shallow Soil Profile





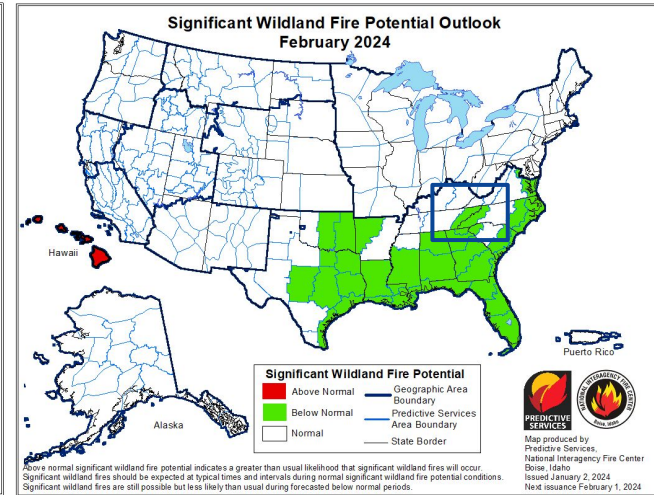
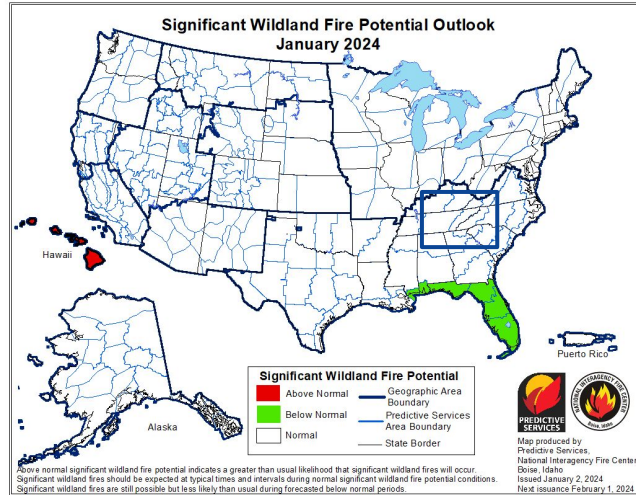
Fire Hazard Impacts

Link to [Wildfire Potential Outlooks from the National Interagency Coordination Center.](#)

Latest TN Burn Ban map available [here.](#)

Latest VA Burn Ban map available [here.](#)

Latest NC Burn Ban information available [here.](#)

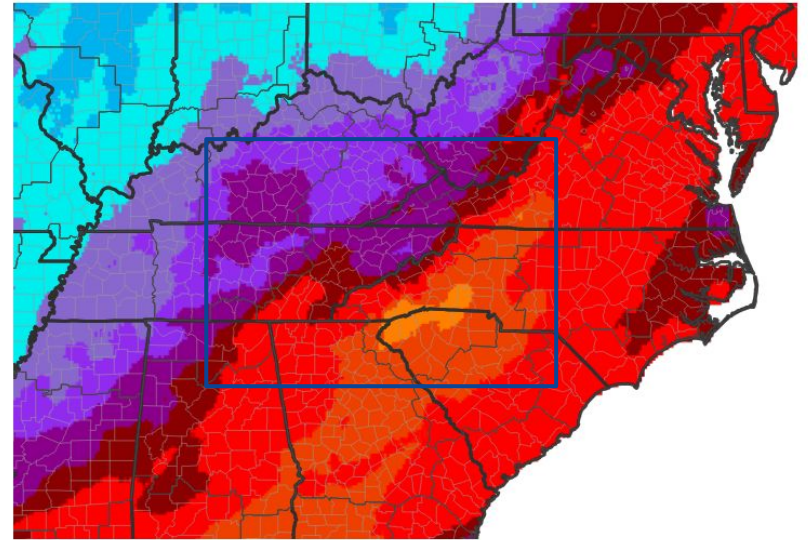




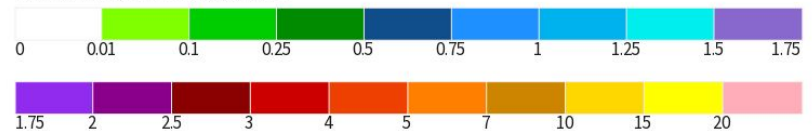
Seven Day Precipitation Forecast

- Moderate to locally heavy rainfall is expected over the next 7 days.
 - 2 different systems will bring multiple rounds of rain: the first being mainly Friday night through Saturday, then the 2nd being mainly Monday night through Tuesday evening.

7-Day Quantitative Precipitation Forecast



Predicted Inches of Precipitation



Source(s): National Weather Service Weather Prediction Center; image courtesy of Drought.gov

Data Valid: 01/04/24





Rapid Onset Drought Outlook

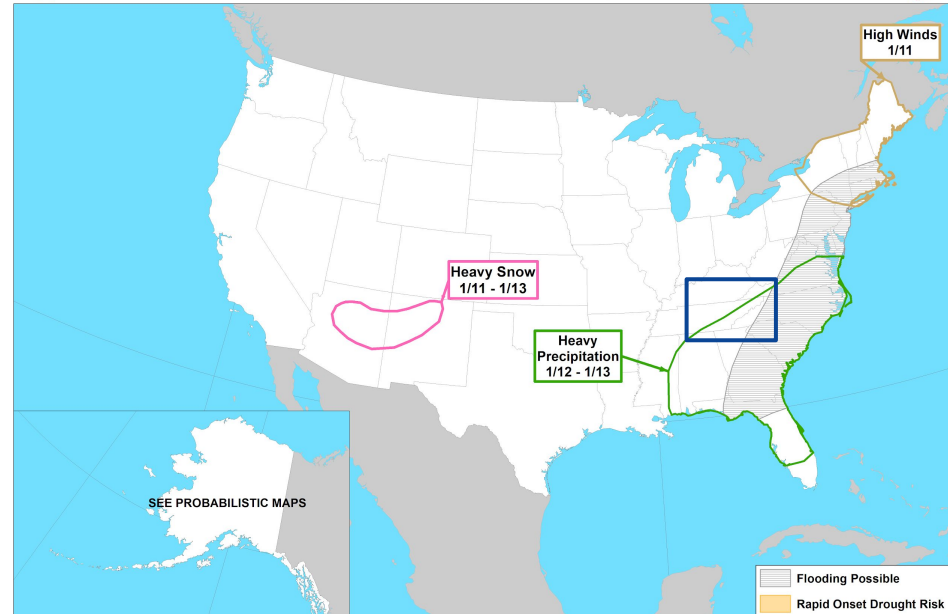
Links to the latest Climate Prediction Center 8 to 14 day [Temperature Outlook](#) and [Precipitation Outlook](#).

- No rapid drought onset is expected.
- Heavy precipitation is increasingly possible beyond the 7-day forecast, i.e. around January 13th.



Day 8-14 U.S. Hazards Outlook

Valid: 01/11/2024-01/17/2024



Climate Prediction Center

Made: 01/03/2024 3PM EST

Follow us:

www.cpc.ncep.noaa.gov



National Oceanic and
Atmospheric Administration

U.S. Department of Commerce

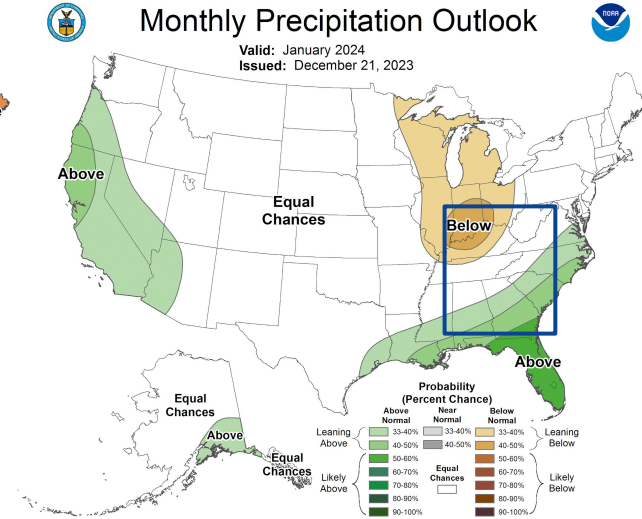
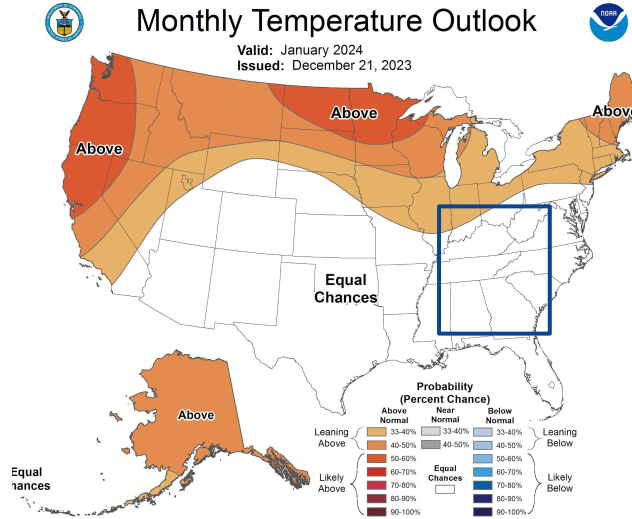
National Weather Service
Morristown, TN



Long-Range Outlooks

The latest monthly and seasonal outlooks can be found on the [CPC homepage](#)

- Equal chances for above or below normal temperatures in January.
 - Periods of above normal and below normal temperatures are expected.
- We'll be between below normal precipitation across the Ohio Valley and wetter than normal conditions across the Southeast U.S.



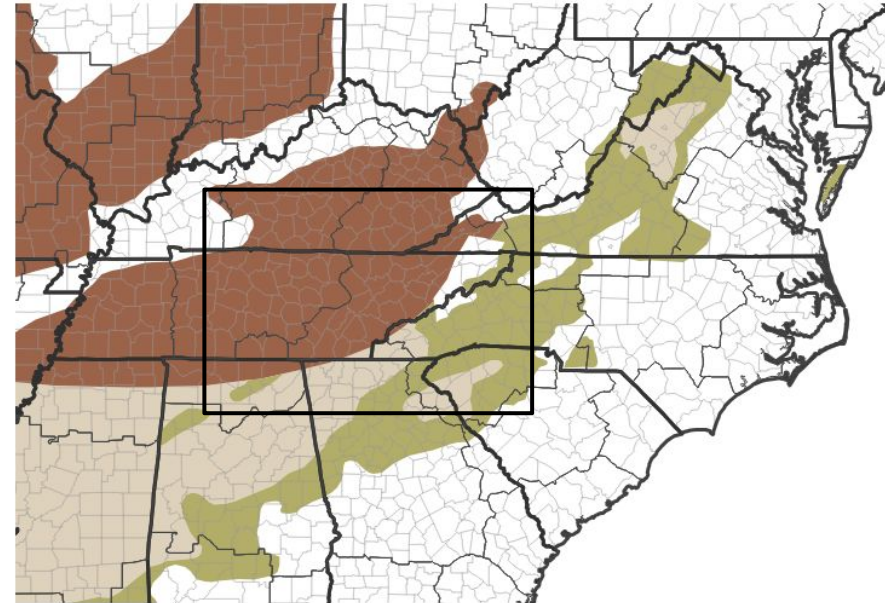


Drought Outlook

The latest monthly and seasonal outlooks can be found on the [CPC homepage](#)

- Drought conditions have been steadily improving across the region. They will continue to improve or persist with far eastern areas forecast to end drought altogether.

1-Month Drought Outlook



Drought Is Predicted To...



Source(s): Climate Prediction Center; image courtesy of Drought.gov

Data Valid: 12/31/23

Links to the latest:

[Climate Prediction Center Monthly Drought Outlook](#)

[Climate Prediction Center Seasonal Drought Outlook](#)

