



# Drought Information Statement for the Mid-South

Valid 09/27/2024

Issued By: NWS Memphis, TN

Contact Information: [sr-meg.wx@noaa.gov](mailto:sr-meg.wx@noaa.gov)

- This product will be updated by October 11, 2024, or if conditions worsen.
- Please see all currently available products at <https://drought.gov/drought-information-statements>.
- Please visit <https://www.weather.gov/meg/DroughtInformationStatement> for previous statements.



National Oceanic and Atmospheric Administration

U.S. Department of Commerce

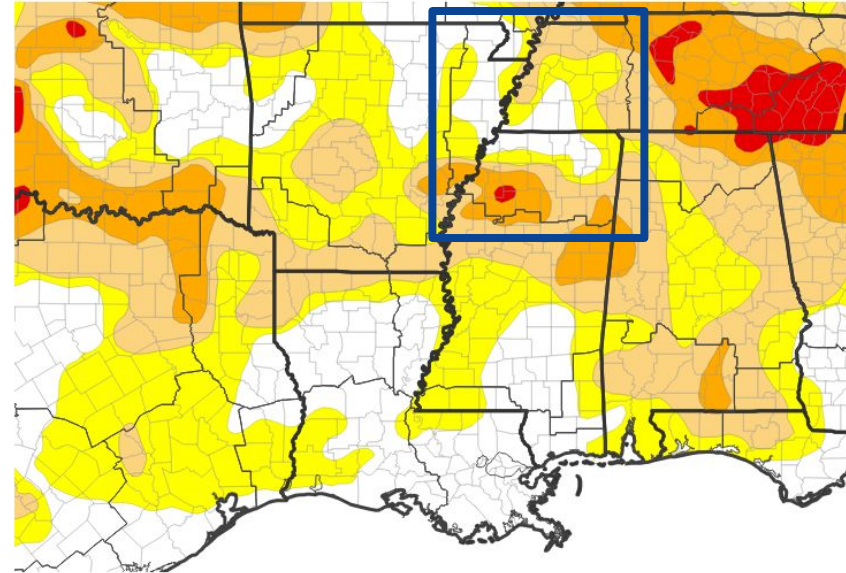


# U.S. Drought Monitor

Link to the [latest U.S. Drought Monitor](#) for the Mid-South

- DROUGHT CONTINUES BUT IMPROVES
- Drought intensity and extent
  - D4 (Exceptional Drought): None.
  - D3 (Extreme Drought): A small portion of north MS.
  - D2 (Severe Drought): A portion of north MS, a portion of southeast AR, and a portion of West TN.
  - D1 (Moderate Drought): Portions of north MS, portions of eastern Arkansas, a portion of the MO Bootheel, and portions of West TN.
  - D0 (Abnormally Dry): Small swaths across West TN, north MS, and eastern AR.

## U.S. Drought Monitor



## U.S. Drought Monitor



Source(s): NDMC, NOAA, USDA; image courtesy of Drought.gov Data Valid: 09/24/24  
 Image Caption: U.S. Drought Monitor valid 7 a.m. EST September 24, 2024



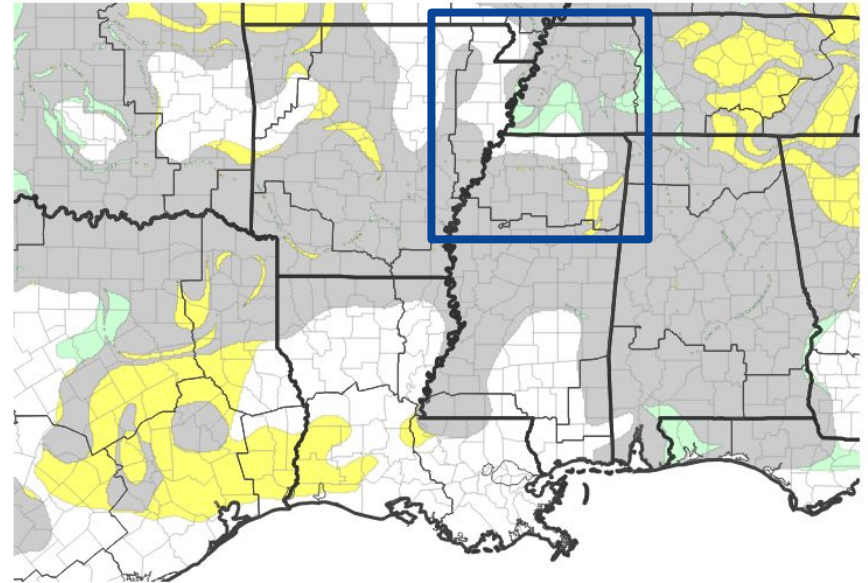


# Recent Change in Drought Intensity

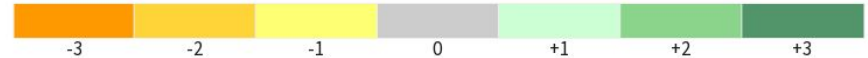
Link to the latest [4-week change map](#) for the Mid-South

- One-Week Drought Monitor Class Change
  - No change: Much of north MS, West TN, and portions of eastern AR.
  - Drought improved: Portions of West TN.
  - Drought worsened: Portions of West TN, eastern Arkansas, the MO Bootheel, and north Mississippi.

U.S. Drought Monitor 1-Week Change Map



Drought Change Since Last Week



Source(s): NDMC, NOAA, USDA; image courtesy of Drought.gov

Data Valid: 09/24/24

Image Caption: U.S. Drought Monitor 1-week change map valid 7 a.m. EST September 24, 2024

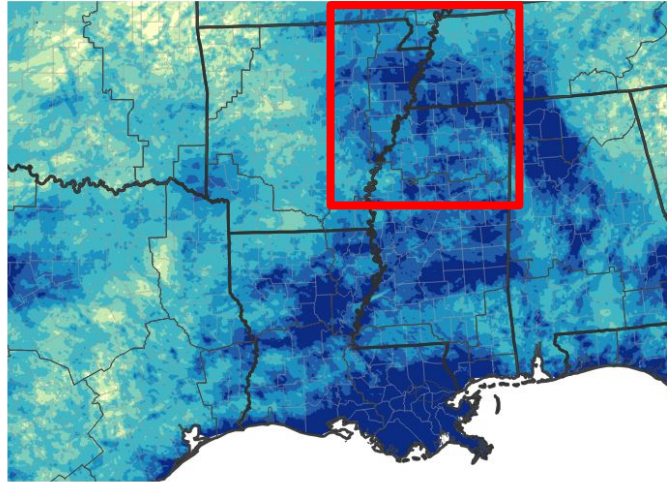




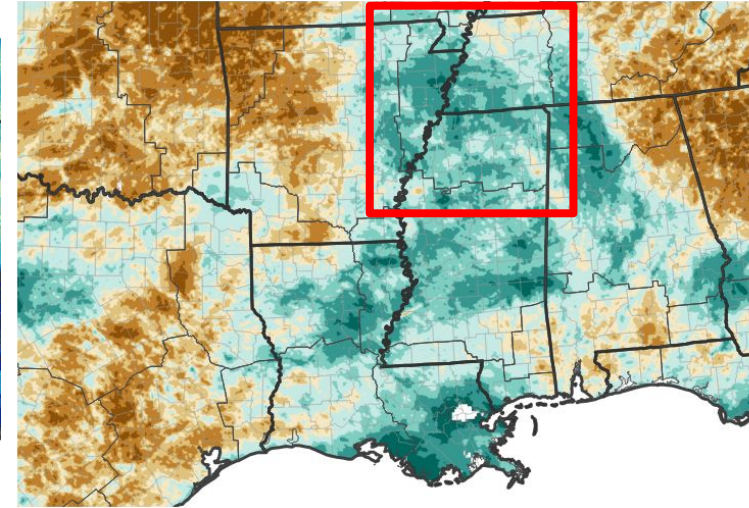
# Precipitation

Over the past 30 days from the [High Plains Regional Climate Center](#)

- Precipitation totals over the past 30 days were generally 2-6" across most of the area. Some areas across the Mid-South received up to 8".
- Rainfall amounts over the past 30 days were normal or above normal.



Inches of Precipitation



Percent of Normal Precipitation (%)

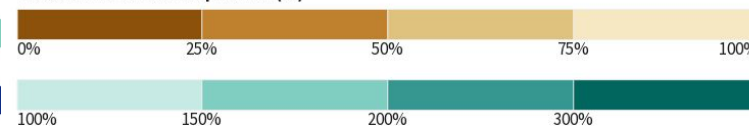


Image Captions:

Left - [Percent of Normal Precipitation for NWS-Southern Region East](#)

Right - [Precipitation for NWS- Southern Region East](#)

Data Courtesy High Plains Regional Climate Center.

Data over the past 30 days ending September 26, 2024



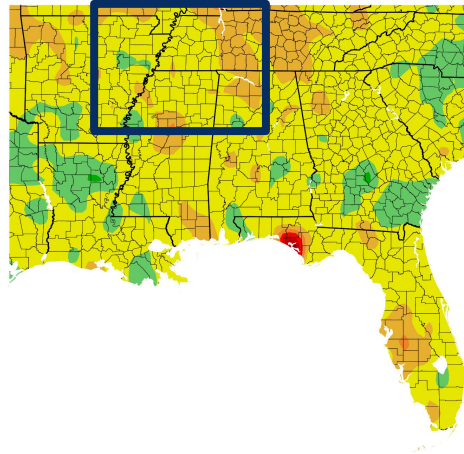


# Temperature

Data over the past 30 days from the [High Plains Regional Climate Center](#)

- Average temperatures have generally ranged from 72-82 degrees across the region over the last 30 days.
- Average temperatures hovered slightly above normal with few areas straying slightly below normal.

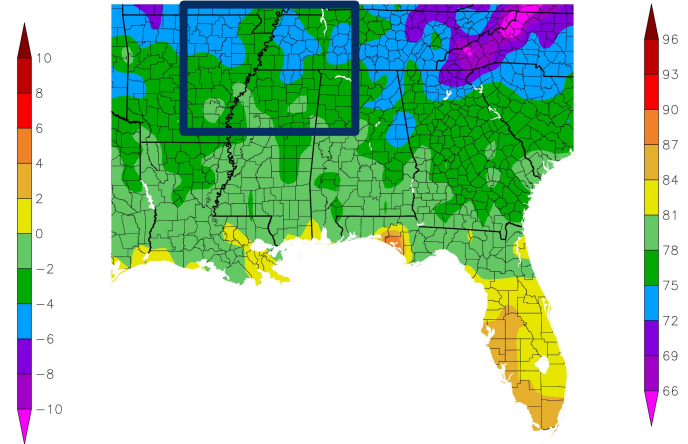
Departure from Normal Temperature (F)  
8/27/2024 – 9/25/2024



Generated 9/26/2024 at HPRCC using provisional data

NOAA Regional Climate Center

Temperature (F)  
8/27/2024 – 9/25/2024



Generated 9/26/2024 at HPRCC using provisional data

NOAA Regional Climate Center

Image Captions:

Left - [Departure from Normal Temperature](#)

Right - [Average Temperature](#)

Data Courtesy High Plains Regional Climate Center.  
Data over the past 30 days ending September 25, 2024





# Summary of Impacts

Links: See/submit [Condition Monitoring Observer Reports \(CMOR\)](#) and view the [Drought Impacts Reporter](#)

## Hydrologic Impacts

- Stream flow is below normal and current forecasts show the Mississippi River a gradual rise to positive values for a brief period of time.

## Agricultural Impacts

- Pastures in north MS and West TN provide very little or no feed. Supplemental feeding is required to maintain livestock condition.
- Areas across West TN are reporting a heavy degree of loss of yield crops. Rotationally graze and the paddocks in which we have grazed cows and have rotated off of have not grown back.

## Fire Hazard Impacts

- Burn Bans: Benton, Lee, Tippah, and Yalobusha Counties in MS.
- Check with local officials as cities have begun issuing city-wide burn bans.

## Other Impacts

- There are no known additional impacts at this time.

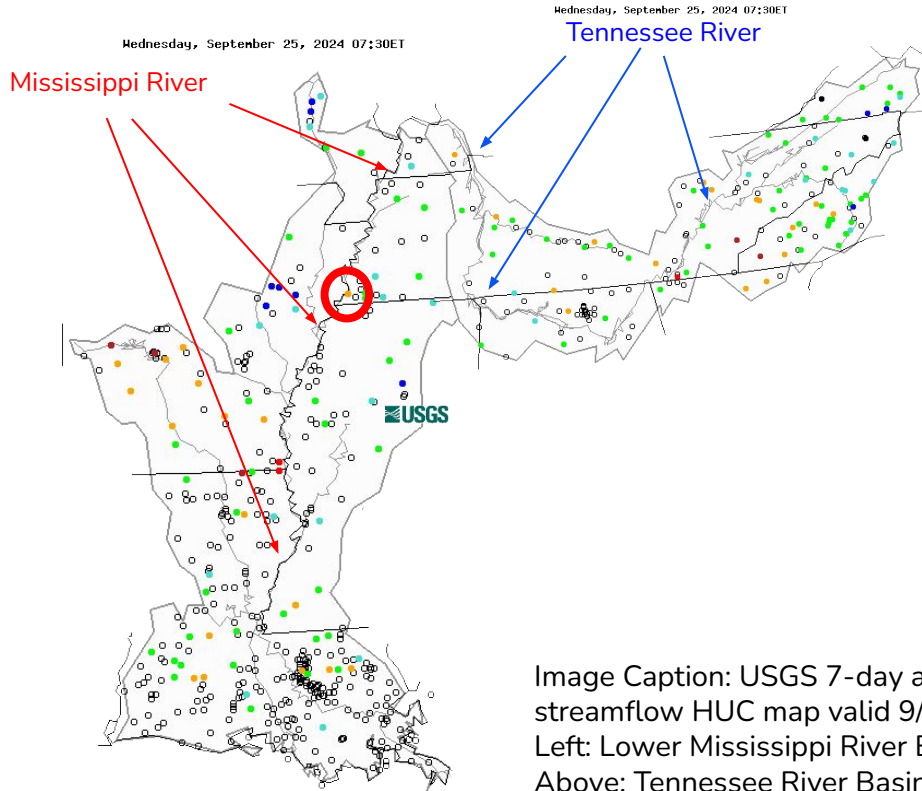
## Mitigation Actions

- Please refer to your municipality and/or water provider for mitigation information.





# Hydrologic Conditions and Impacts



- The **Mississippi River at Memphis** is currently experiencing below normal flow. The extended river forecasts indicate a gradual rise to positive values for a brief period of time.
- The Tennessee River feeds into the Mississippi River and remains near or slightly below normal at between Savannah, TN, and Kentucky Lake.



# Agricultural Impacts

- Soil moisture anomalies are normal or slightly above across the Mid-South.
- The crop moisture index is normal to abnormally moist across much of the Mid-South.

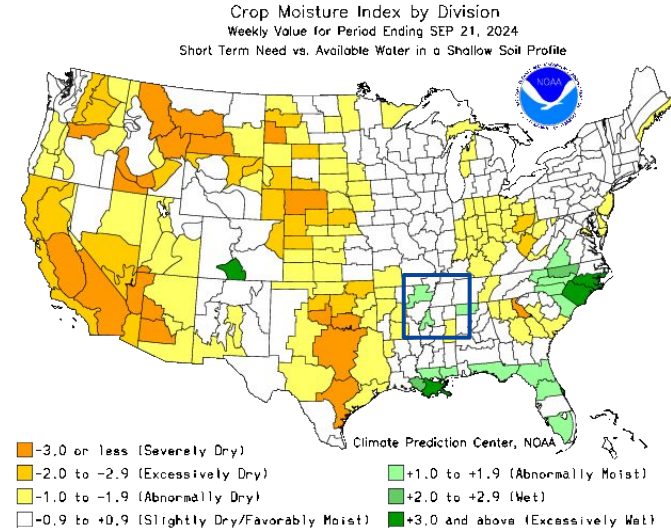
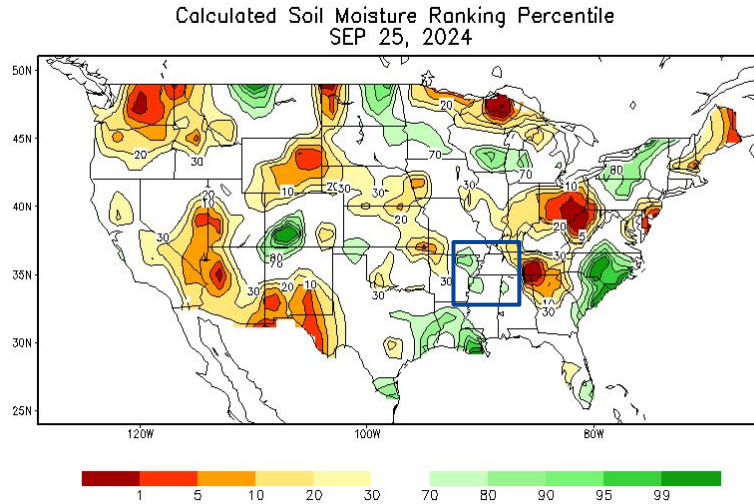


Image Captions:

Left: CPC Calculated [Soil Moisture Ranking Percentile](#) valid September 25, 2024

Right: [Crop Moisture Index by Division](#). Weekly value for period ending September 21, 2024







# Fire Hazard Impacts

Link to [Wildfire Potential Outlooks from the National Interagency Coordination Center](#).

- Above normal wildland fire is expected for September and October.
- Burn Bans currently in effect for:
  - [Arkansas](#): None.
  - [Missouri](#): None.
  - [Mississippi](#): Benton, Lee, Tippah, and Yalobusha.
  - [Tennessee](#): None.

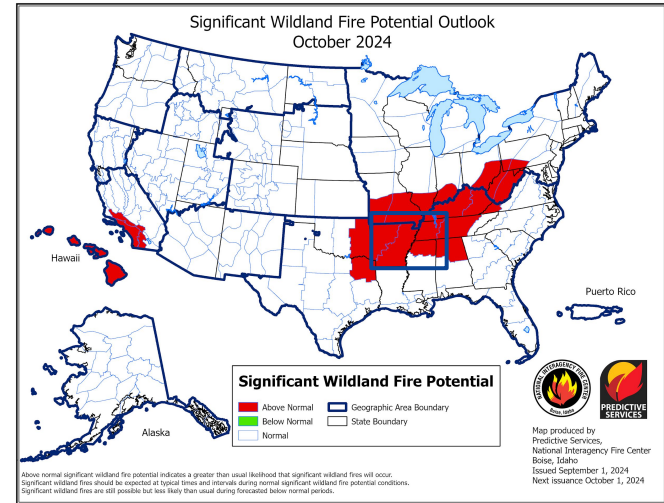
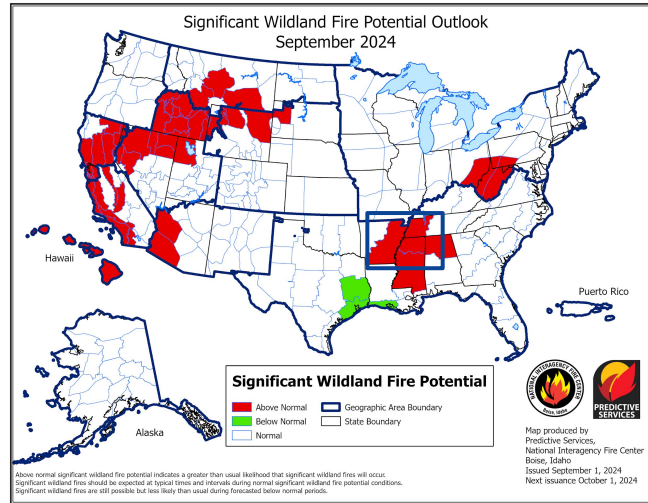


Image Caption: [Significant Wildland Fire Potential Monthly Outlook](#) for September 2024.

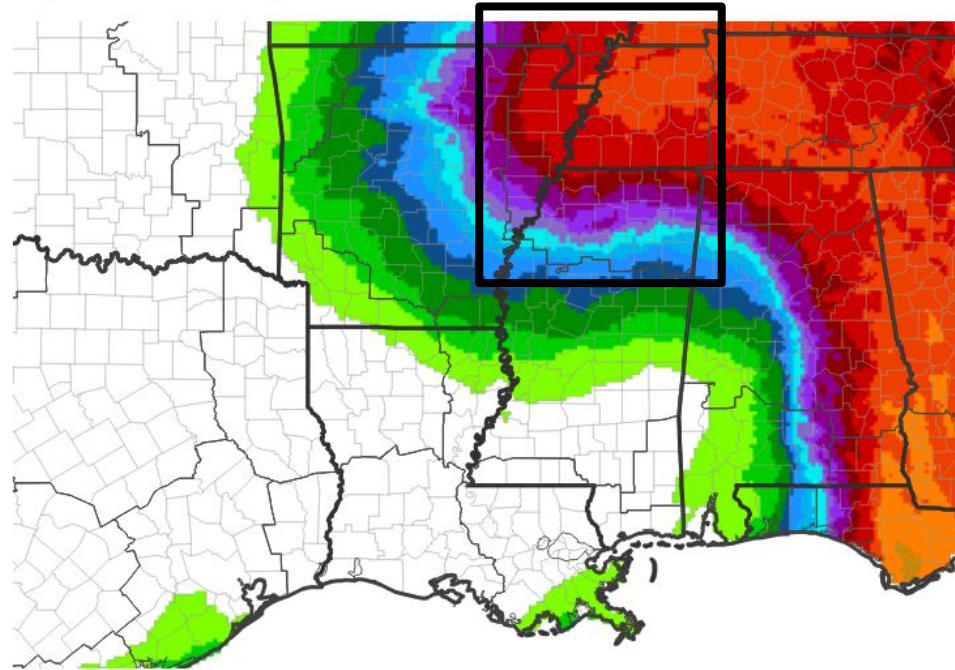




# Seven Day Precipitation Forecast

26, 2024–October 3, 2024

- Forecast precipitation over the next week is generally 2-4" with pockets up to 7" as Tropical Depression Helene moves across the Mid-South.



Predicted Inches of Precipitation

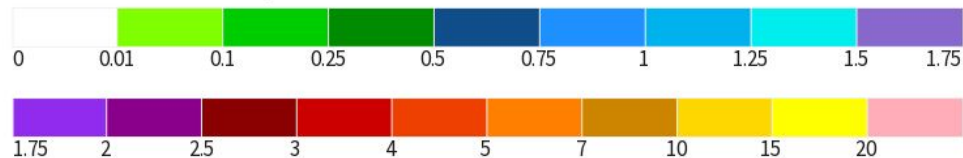


Image Caption: National Weather Service Weather Prediction Center courtesy of drought.gov  
7-Day Quantitative Precipitation  
Forecast Valid September 26-October 3, 2024





# Long-Range Outlooks

The latest monthly and seasonal outlooks can be found on the [CPC homepage](#)

- The Mid-South has equal chances of experiencing above or below normal temperatures for October.
- There is also a 30-40% chance that rainfall amounts will be leaning below normal for October.

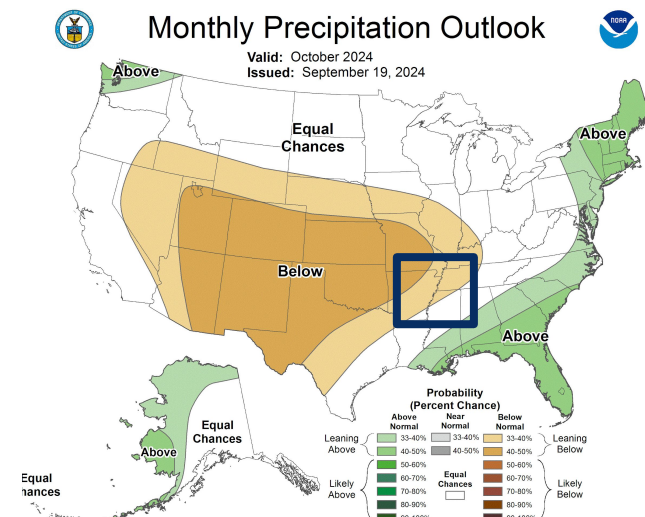
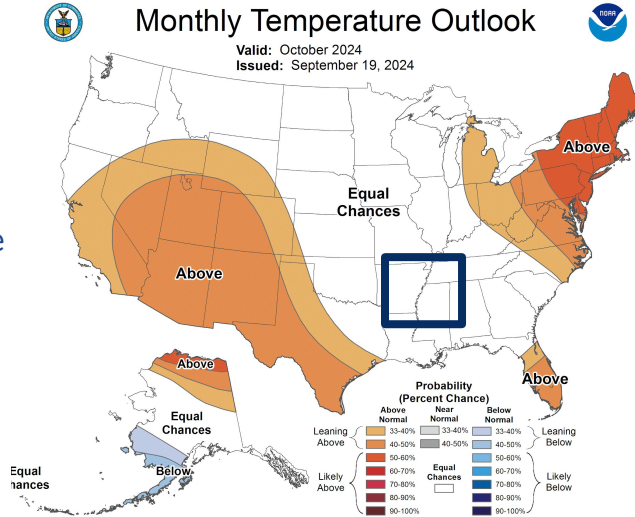


Image Captions:

Left - [Climate Prediction Center Monthly Temperature Outlook](#),

Right - [Climate Prediction Center Monthly Precipitation Outlook](#).

Valid October 2024



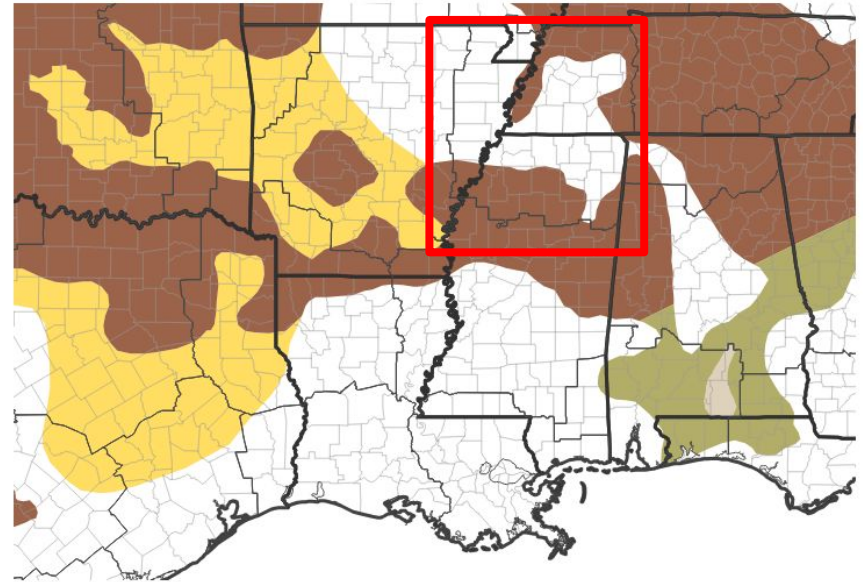


# Drought Outlook

The latest monthly and seasonal outlooks can be found on the [CPC homepage](#)

- Drought conditions are expected to persist across a portions of West TN and north MS.

## Seasonal (3-Month) Drought Outlook for September 19, 2024-December 31, 2024



Drought Is Predicted To...



Image Caption: Climate Prediction Center image courtesy of Drought.gov. Last Updated: 09/19/24

Climate Prediction Center Seasonal Drought Outlook Released  
09/19/2024 valid through 12/31/2024

Links to the latest:

- [Climate Prediction Center Monthly Drought Outlook](#)
- [Climate Prediction Center Seasonal Drought Outlook](#)

