



Drought Information Statement for the Mid-South

Valid 09/03/2024

Issued By: NWS Memphis, TN

Contact Information: sr-meg.wx@noaa.gov

- This product will be updated by September 12, 2024, or if conditions worsen.
- Please see all currently available products at <https://drought.gov/drought-information-statements>.
- Please visit <https://www.weather.gov/meg/DroughtInformationStatement> for previous statements.



National Oceanic and Atmospheric Administration

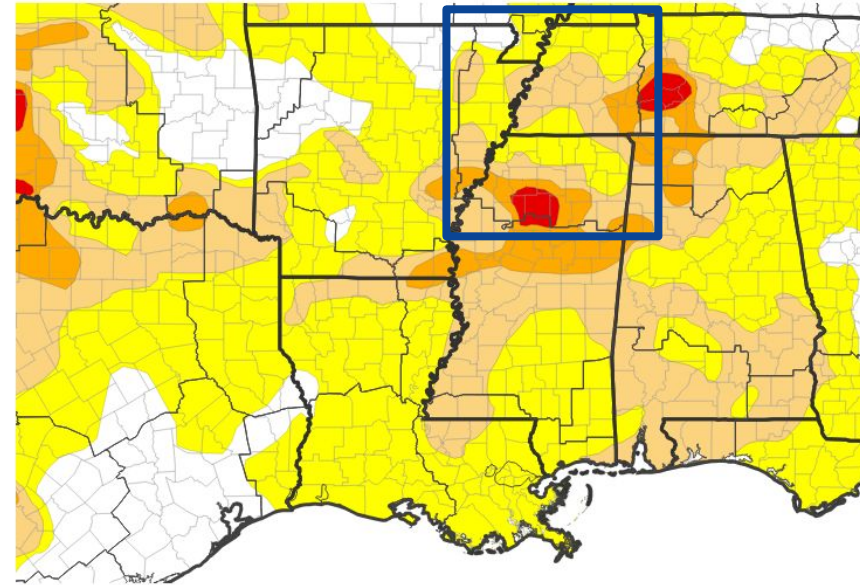
U.S. Department of Commerce



U.S. Drought Monitor

Link to the [latest U.S. Drought Monitor](#) for the Mid-South

- DROUGHT WORSENING
- Drought intensity and extent
 - D4 (Exceptional Drought): None.
 - D3 (Extreme Drought): A portion of north Mississippi.
 - D2 (Severe Drought): A portion of north-central MS, southeast Arkansas, and a portion of West TN.
 - D1 (Moderate Drought): Portions of north MS, portions of eastern Arkansas, and portions of West TN.
 - D0 (Abnormally Dry): Most of the remainder of the Mid-South.



U.S. Drought Monitor



Image Caption: U.S. Drought Monitor valid 7 a.m. EST August 27, 2024



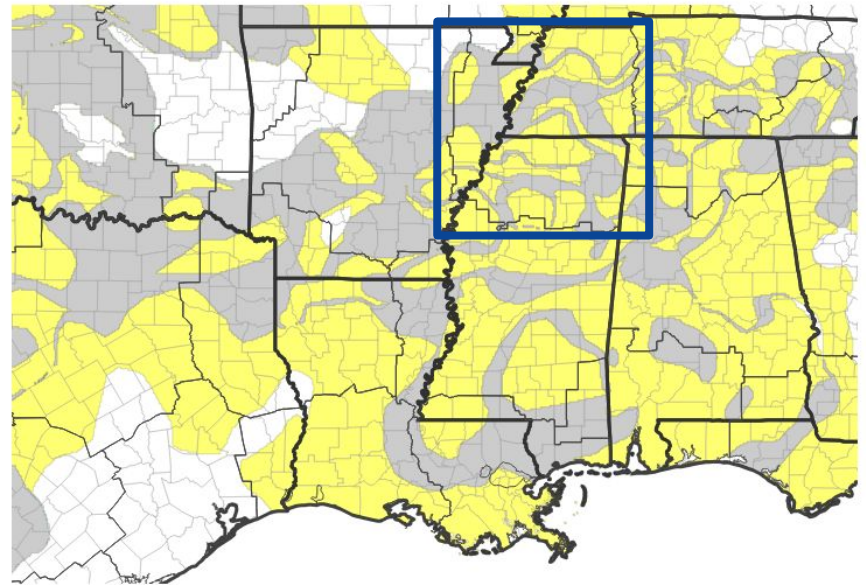


Recent Change in Drought Intensity

Link to the latest [4-week change map](#) for the Mid-South

- One-Week Drought Monitor Class Change
 - No change: Much of north MS, West TN, and east-central AR.
 - Drought improved: None.
 - Drought worsened: Portions of West TN, eastern Arkansas, and north Mississippi.

U.S. Drought Monitor 1-week change map



Drought Change Since Last Week

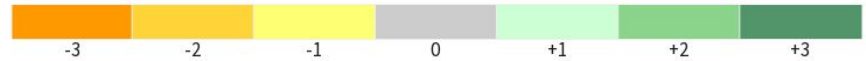


Image Caption: U.S. Drought Monitor 1-week change map valid 7 a.m. EST August 27, 2024





Precipitation

Over the past 30 days from the [High Plains Regional Climate Center](#)

- Precipitation totals over the past 30 days were 1-2” across most of the area.
- Rainfall amounts over the past 30 days were widely below normal.

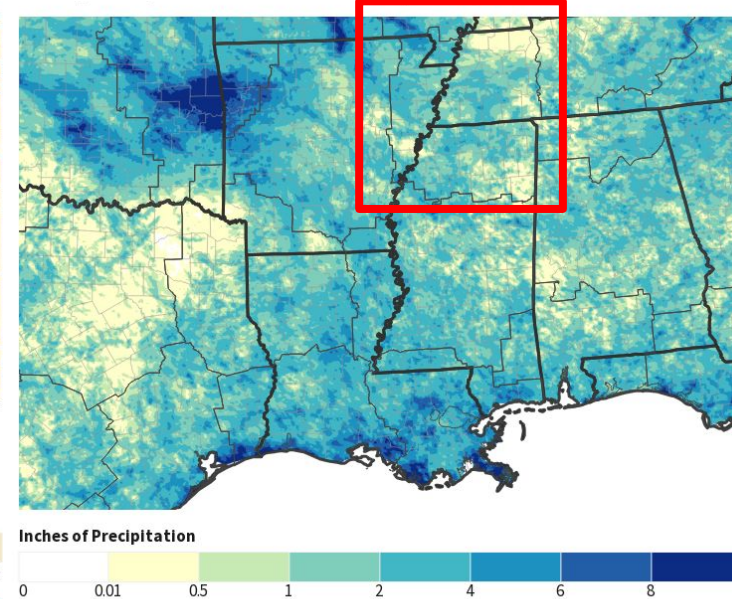
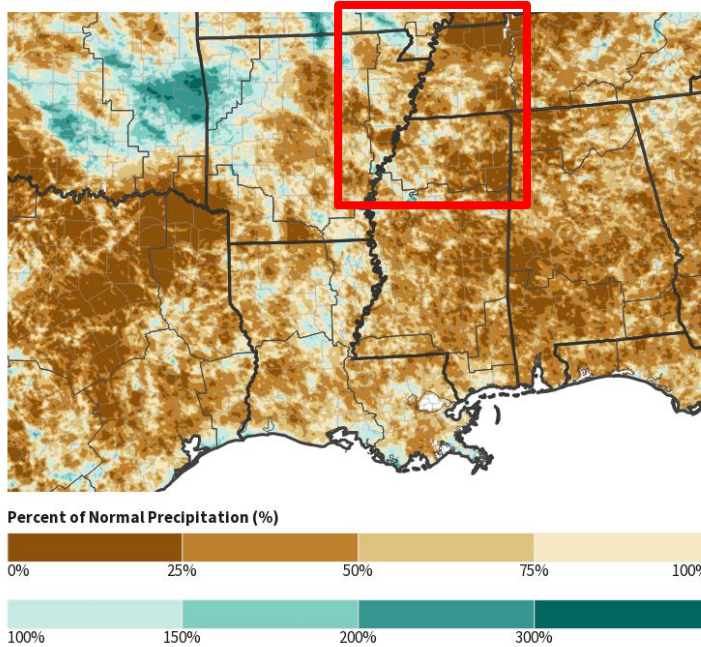


Image Captions:
 Left - [Percent of Normal Precipitation for NWS-Southern Region East](#)
 Right - [Precipitation for NWS- Southern Region East](#)

Data Courtesy High Plains Regional Climate Center.
 Data over the past 30 days ending September 2, 2024

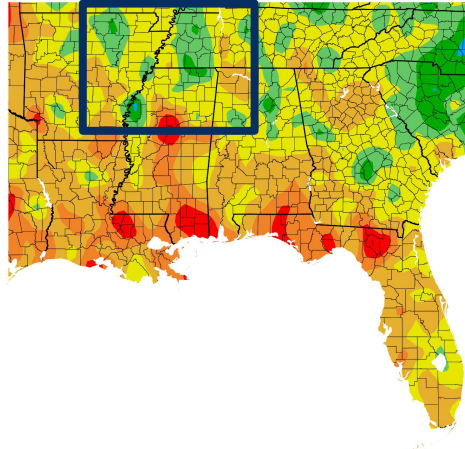


Temperature

Data over the past 30 days from the [High Plains Regional Climate Center](#)

- Average temperatures have generally ranged from 75-85 degrees across the region over the last 30 days.
- Average temperatures hovered around normal with few areas straying slightly above or below normal.

Departure from Normal Temperature (F)
8/4/2024 - 9/2/2024



Temperature (F)
8/4/2024 - 9/2/2024

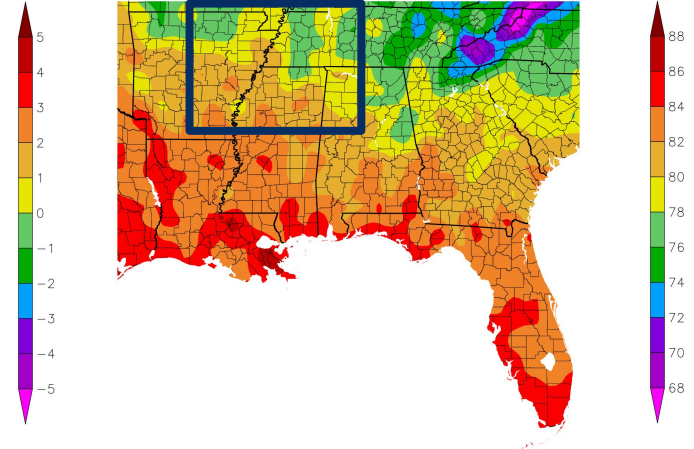


Image Captions:
Left - [Departure from Normal Temperature](#)
Right - [Average Temperature](#)

Data Courtesy High Plains Regional Climate Center.
Data over the past 30 days ending September 2, 2024





Summary of Impacts

Links: See/submit [Condition Monitoring Observer Reports \(CMOR\)](#) and view the [Drought Impacts Reporter](#)

Hydrologic Impacts

- Stream flow is below to near normal and current forecasts show the Mississippi River falling into or remaining below low water thresholds.

Agricultural Impacts

- Pastures in north MS and West TN provide very little or no feed. Supplemental feeding is required to maintain livestock condition.
- Areas across West TN are reporting a heavy degree of loss of yield crops.

Fire Hazard Impacts

- Moderate conditions of wildfire danger for Cross, Crittenden, St. Francis, Lee, and Phillips Counties in AR.
- Burn Bans: Alcorn, Calhoun, Lee, Marshall, Monroe, Prentiss, Tippah, and Union Counties in MS.
- Check with local officials as cities have begun issuing city-wide burn bans.

Other Impacts

- There are no known additional impacts at this time.

Mitigation Actions

- Please refer to your municipality and/or water provider for mitigation information.





Hydrologic Conditions and Impacts

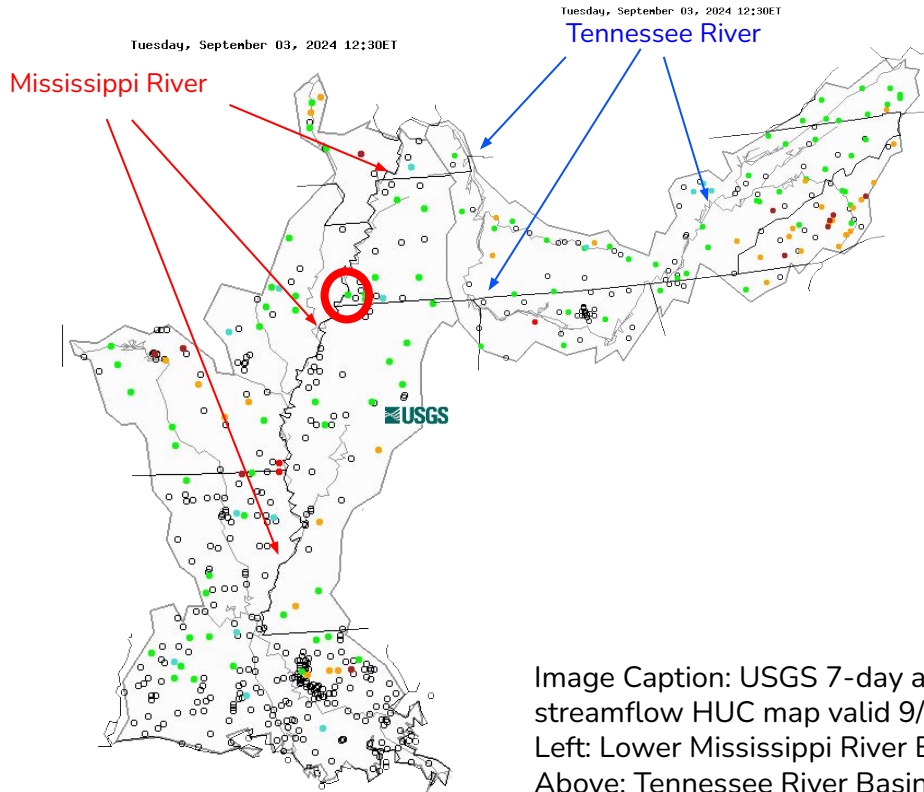


Image Caption: USGS 7-day average streamflow HUC map valid 9/03/2024
Left: Lower Mississippi River Basin
Above: Tennessee River Basin

- The **Mississippi River at Memphis** is currently experiencing normal flow. The extended river forecasts indicate a continuing slow further below low water thresholds.
- The Tennessee River feeds into the Mississippi River and remains near or slightly below normal at between Savannah, TN, and Kentucky Lake.



Agricultural Impacts

- Soil moisture anomalies are below normal across the Mid-South. The greatest anomalies are along and east of the Mississippi River.
- The crop moisture index is abnormally to excessively dry across much of the Mid-South.

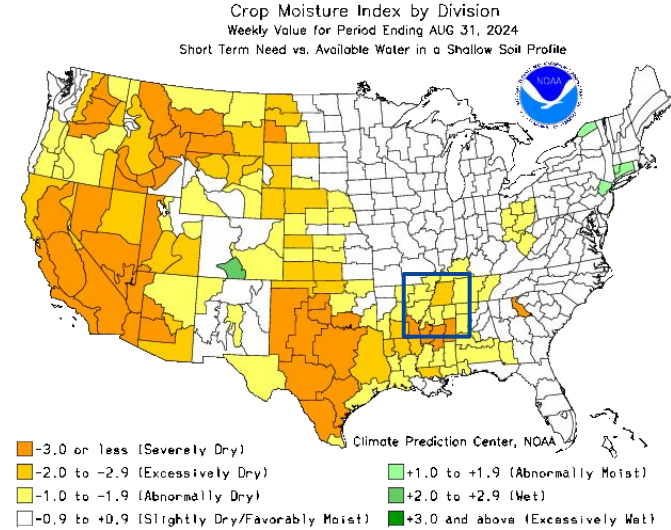
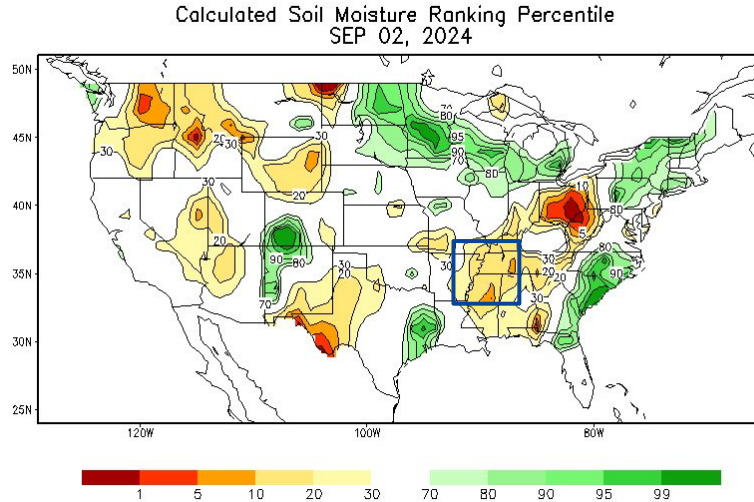


Image Captions:

Left: CPC Calculated [Soil Moisture Ranking Percentile](#) valid September 1, 2024

Right: [Crop Moisture Index by Division](#). Weekly value for period ending August 31, 2024





Fire Hazard Impacts

Link to [Wildfire Potential Outlooks from the National Interagency Coordination Center](#).

- Above normal wildland fire is expected for September and August.
- Burn Bans currently in effect for:
 - [Arkansas](#): None.
 - [Missouri](#): None.
 - [Mississippi](#): Alcorn, Calhoun, Lee, Marshall, Monroe, Prentiss, Tippah, and Union
 - [Tennessee](#): None.

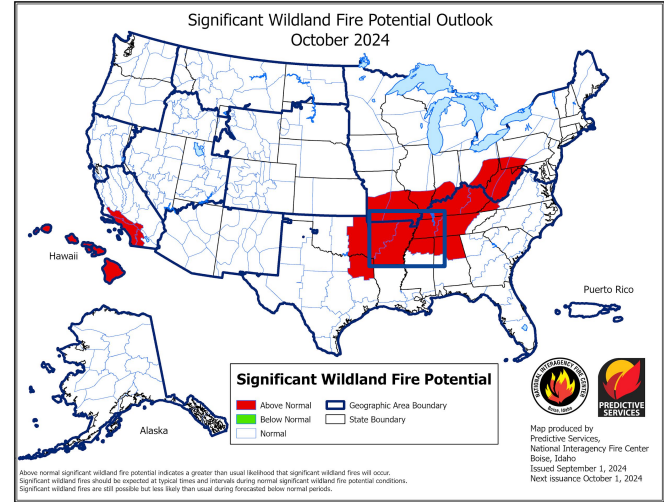
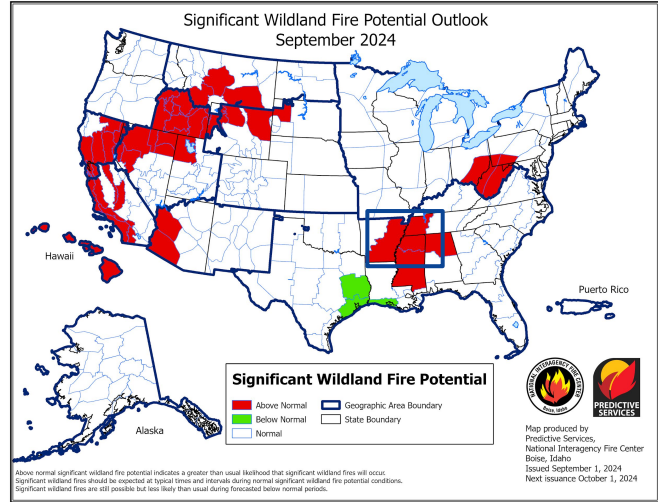


Image Caption: [Significant Wildland Fire Potential Monthly Outlook](#) for September 2024.





Seven Day Precipitation Forecast

- Forecast precipitation over the next week is generally an inch or less across the area.

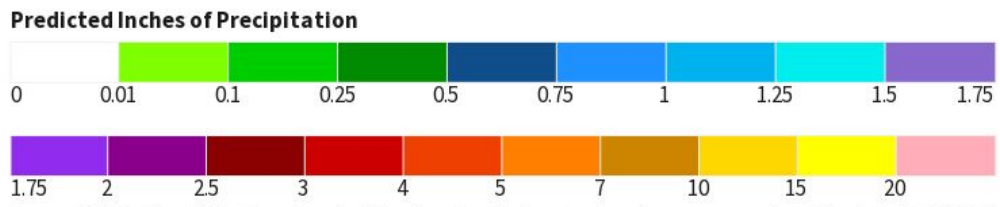
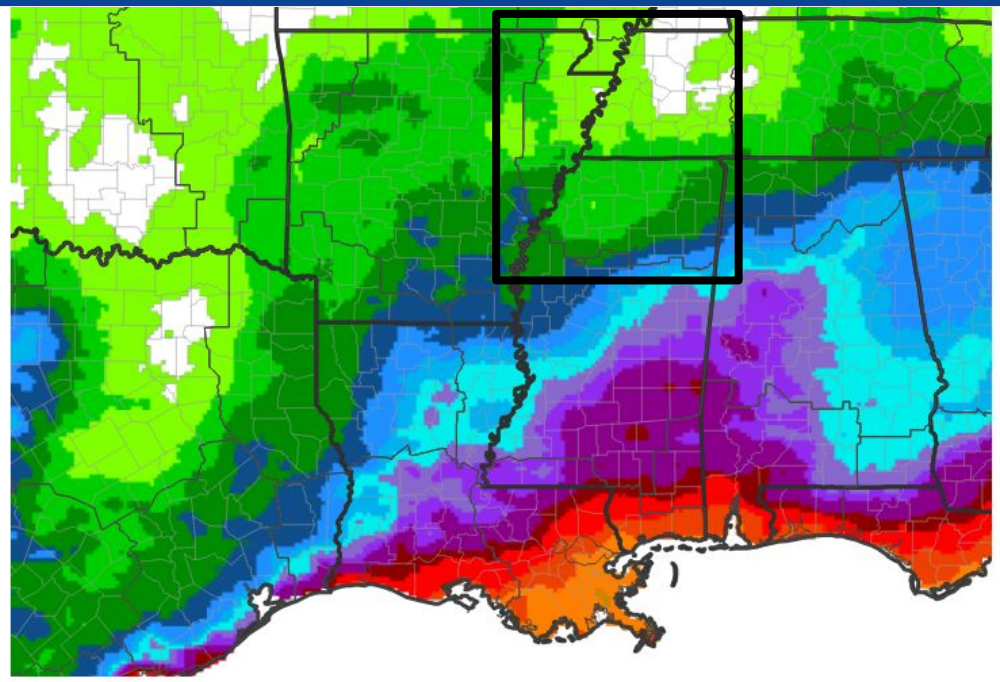


Image Caption: National Weather Service Weather Prediction Center courtesy of drought.gov
7-Day Quantitative Precipitation
Forecast Valid September 3-10, 2024



Long-Range Outlooks

The latest monthly and seasonal outlooks can be found on the [CPC homepage](#)

- The Mid-South has equal chances of experiencing above or below normal temperatures for September.
- There is also a 30-40% chance that rainfall amounts will be leaning above normal for September.

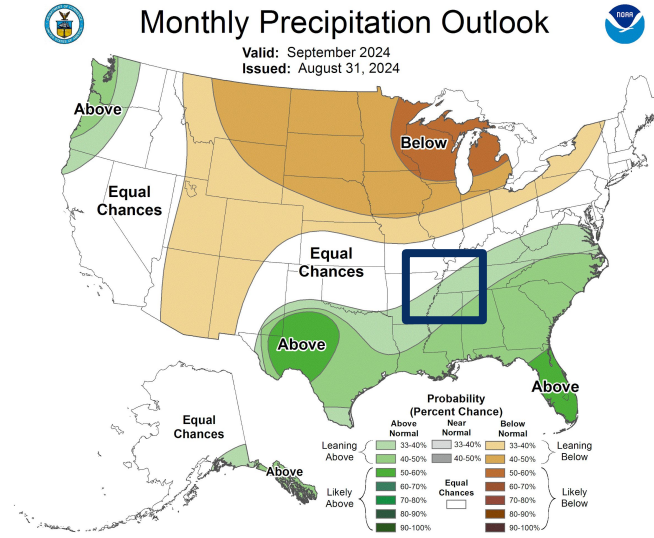
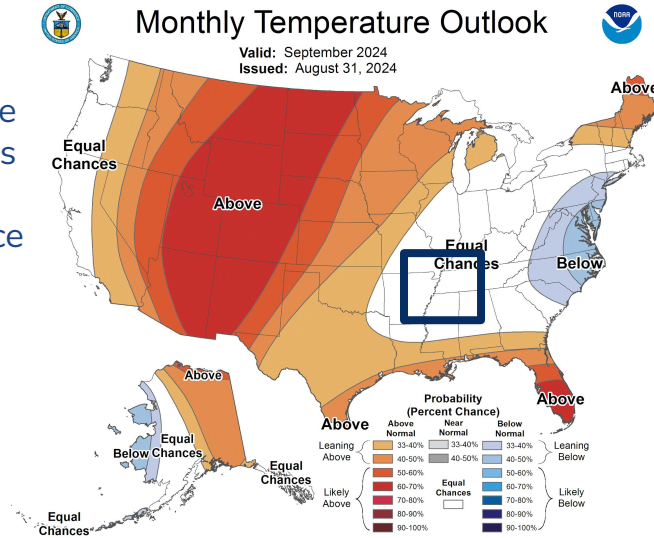


Image Captions:

Left - [Climate Prediction Center Monthly Temperature Outlook](#)

Right - [Climate Prediction Center Monthly Precipitation Outlook](#)

Valid August 2024





Drought Outlook

The latest monthly and seasonal outlooks can be found on the [CPC homepage](#)

- Drought conditions are expected to persist across northeast AR.
- Drought conditions are expected to improve or end across West TN and north MS.

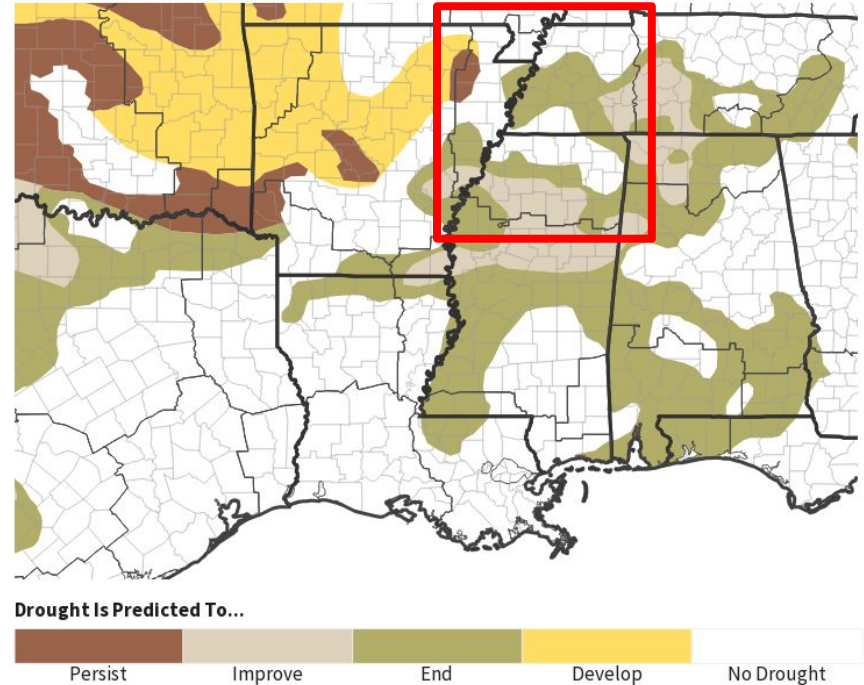


Image Caption:
Climate Prediction Center Seasonal Drought Outlook Released
08/31/2024 valid through 11/30/2024

Links to the latest:

- [Climate Prediction Center Monthly Drought Outlook](#)
- [Climate Prediction Center Seasonal Drought Outlook](#)

