



Drought Information Statement for the Mid-South

Valid 08/23/2024

Issued By: NWS Memphis, TN

Contact Information: sr-meg.wx@noaa.gov

- This product will be updated by September 6, 2024, or if conditions worsen.
- Please see all currently available products at <https://drought.gov/drought-information-statements>.
- Please visit <https://www.weather.gov/meg/DroughtInformationStatement> for previous statements.



National Oceanic and Atmospheric Administration

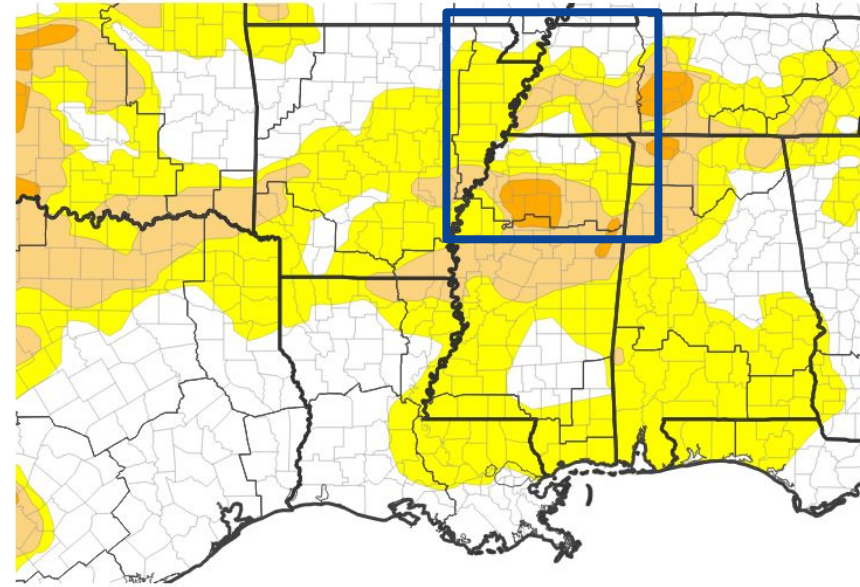
U.S. Department of Commerce



U.S. Drought Monitor

Link to the [latest U.S. Drought Monitor](#) for the Mid-South

- DROUGHT WORSENING
- Drought intensity and extent
 - D4 (Exceptional Drought): None.
 - D3 (Extreme Drought): None.
 - D2 (Severe Drought): A portion of north central MS.
 - D1 (Moderate Drought): Portions of north MS, southeast Arkansas, and portions of West TN.
 - D0 (Abnormally Dry): Most of the remainder of the Mid-South except along the MO/KY borders.



U.S. Drought Monitor



Image Caption: U.S. Drought Monitor valid 7 a.m. EST August 20, 2024





Recent Change in Drought Intensity

Link to the latest [4-week change map](#) for the Mid-South

- One-Week Drought Monitor Class Change
 - No change: Much of north MS, West TN, and east-central AR.
 - Drought improved: A sliver of northeast AR and the Missouri Bootheel.
 - Drought worsened: Portions of West TN, southeast Arkansas, and north central Mississippi.

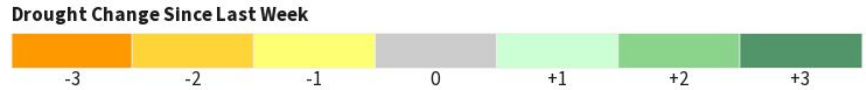
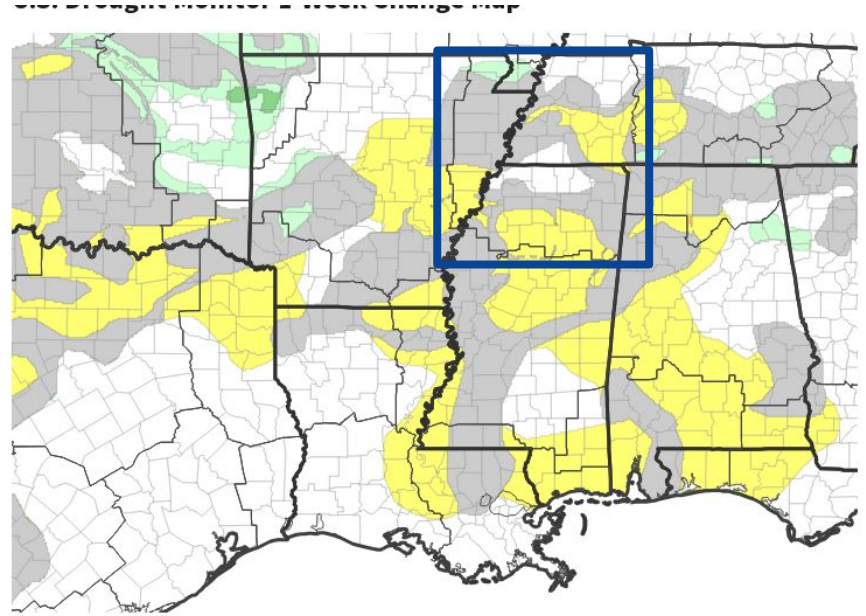


Image Caption: U.S. Drought Monitor 1-week change map valid 7 a.m. EST August 20, 2024





Precipitation

Over the past 30 days from the [High Plains Regional Climate Center](#)

- Precipitation totals over the past 30 days generally ranged from 2-4" across the Mid-South with localized areas seeing a half an inch or less.
- Rainfall amounts over the past 30 days were widely below normal with small localized areas near normal.

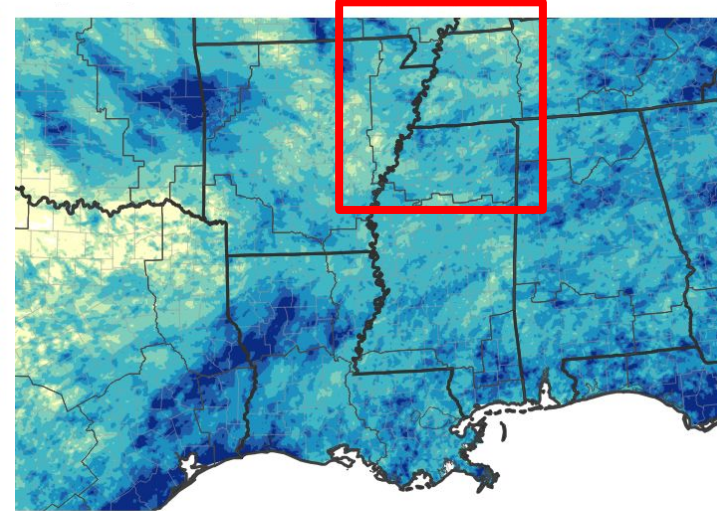
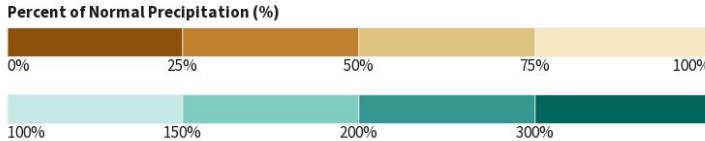
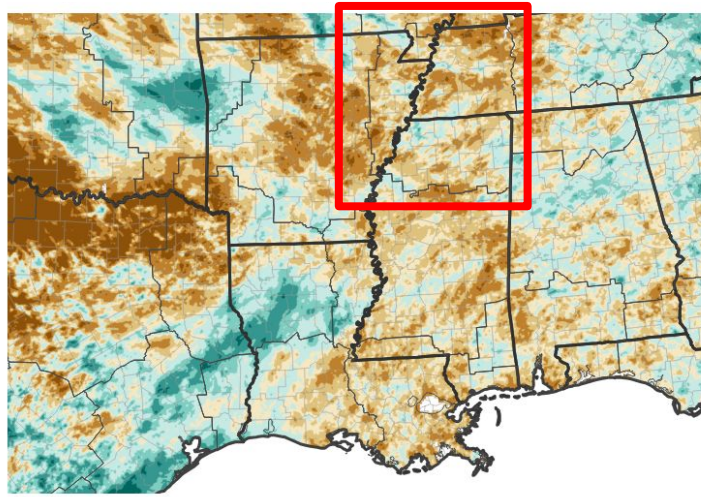


Image Captions:
Left - [Percent of Normal Precipitation for NWS-Southern Region East](#)

Right - [Precipitation for NWS- Southern Region East](#)

Data Courtesy High Plains Regional Climate Center.
Data over the past 30 days ending August 23, 2024

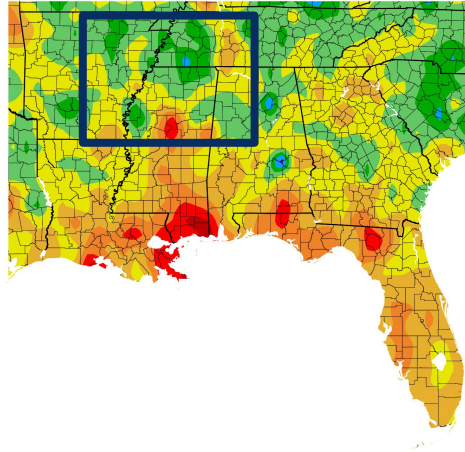


Temperature

Data over the past 30 days from the [High Plains Regional Climate Center](#)

- Average temperatures have generally ranged from 75-85 degrees across the region over the last 30 days.
- Average temperatures were normal or 1-2 degrees below normal across the region.

Departure from Normal Temperature (F)
7/24/2024 - 8/22/2024



Temperature (F)
7/24/2024 - 8/22/2024

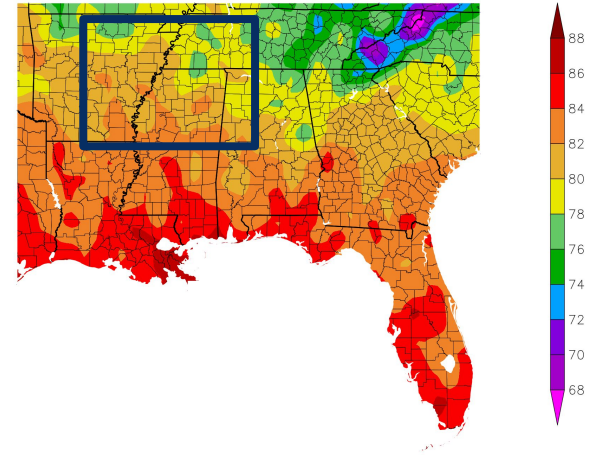


Image Captions:

Left - [Departure from Normal Temperature](#)

Right - [Average Temperature](#)

Data Courtesy High Plains Regional Climate Center.
Data over the past 30 days ending August 22, 2024





Summary of Impacts

Links: See/submit [Condition Monitoring Observer Reports \(CMOR\)](#) and view the [Drought Impacts Reporter](#)

Hydrologic Impacts

- Stream flow is below to near normal and current forecasts show the Mississippi River to continue to drop to near low water thresholds.

Agricultural Impacts

- Little to no rain has been good for harvest.

Fire Hazard Impacts

- Moderate conditions of wildfire danger for Cross, Crittenden, St. Francis, Lee, and Phillips Counties in AR.

Other Impacts

- There are no known additional impacts at this time.

Mitigation Actions

- Please refer to your municipality and/or water provider for mitigation information.





Hydrologic Conditions and Impacts

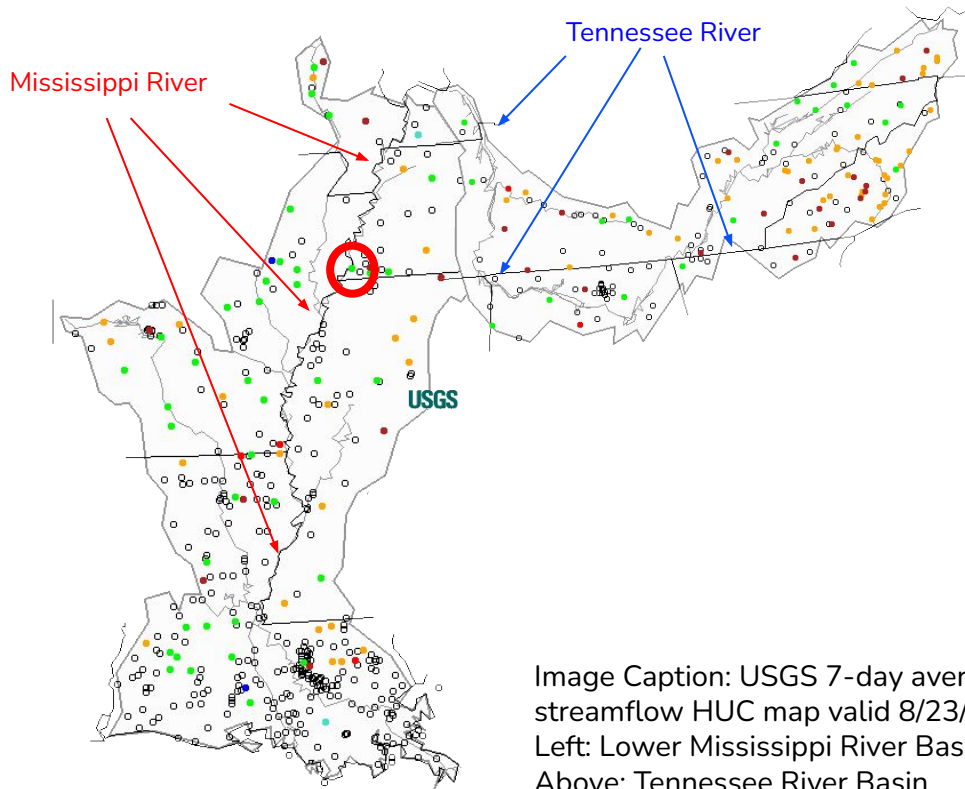


Image Caption: USGS 7-day average streamflow HUC map valid 8/23/2024
Left: Lower Mississippi River Basin
Above: Tennessee River Basin

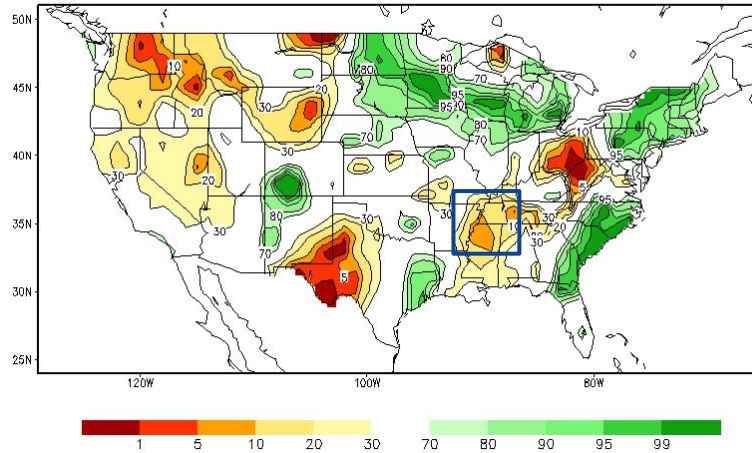
- The **Mississippi River at Memphis** is currently experiencing normal flow. The extended river forecasts indicate a continuing drop to near low water thresholds.
- The Tennessee River feeds into the Mississippi River remains near or slightly below normal at between Savannah, TN, and Kentucky Lake.



Agricultural Impacts

- Soil moisture anomalies are below normal across the Mid-South. The greatest anomalies are in southwest TN and northwest MS.
- The crop moisture index is abnormally to excessively dry across much of the Mid-South.

Calculated Soil Moisture Ranking Percentile
AUG 22, 2024



Crop Moisture Index by Division
Weekly Value for Period Ending AUG 17, 2024
Short Term Need vs. Available Water in a Shallow Soil Profile

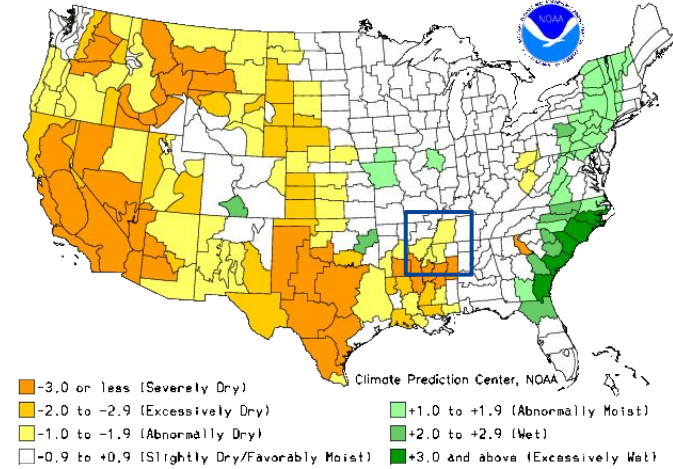


Image Captions:

Left: CPC Calculated [Soil Moisture Ranking Percentile](#) valid August 22, 2024

Right: [Crop Moisture Index by Division](#). Weekly value for period ending August 17, 2024





Fire Hazard Impacts

Link to [Wildfire Potential Outlooks from the National Interagency Coordination Center](#).

- Normal wildland fire is expected for August and September.
- Burn Bans currently in effect for:
 - [Arkansas](#): None.
 - [Missouri](#): None.
 - [Mississippi](#): None.
 - [Tennessee](#): None.

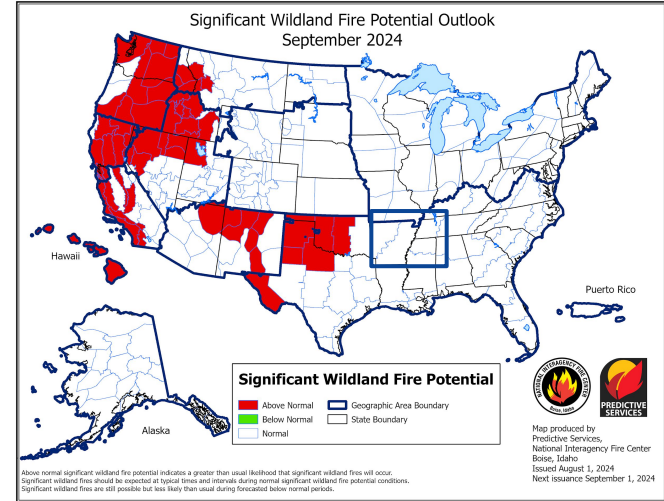
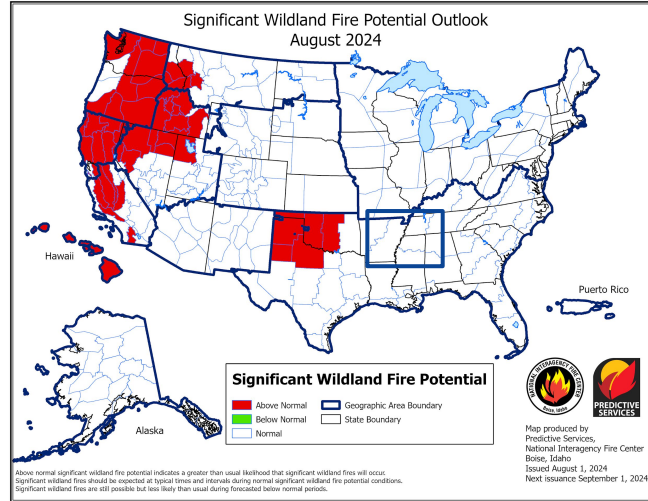


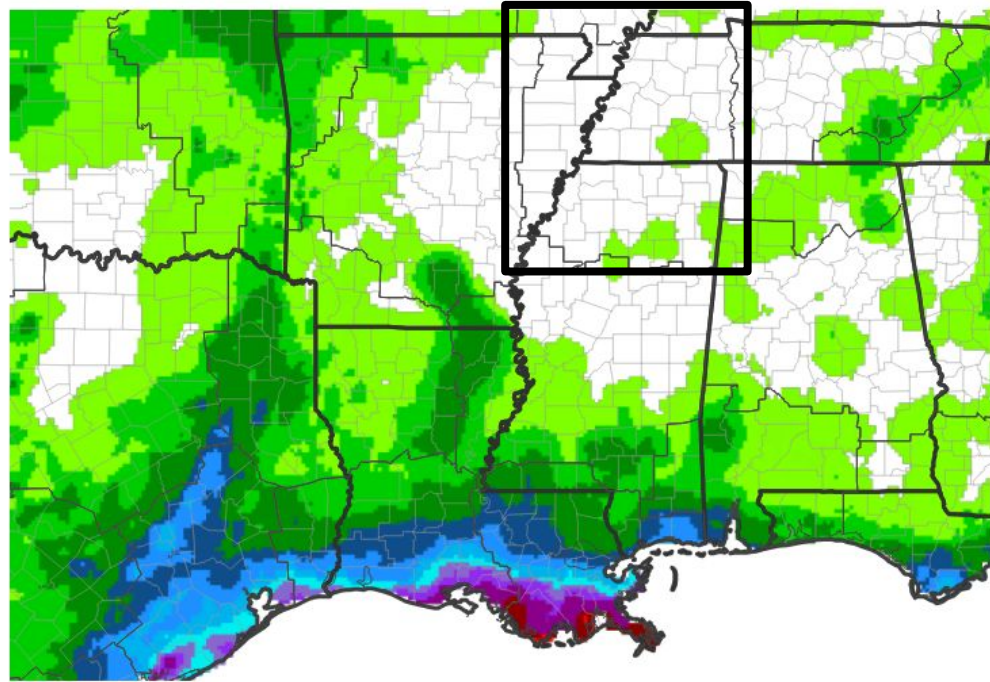
Image Caption: [Significant Wildland Fire Potential Monthly Outlook](#) for August 2024.



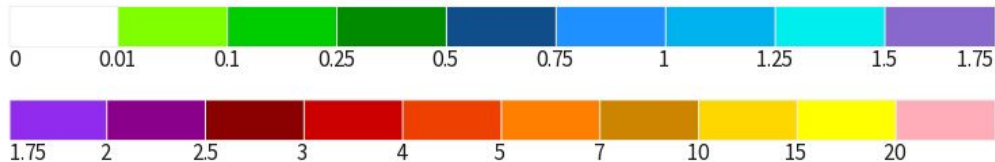


Seven Day Precipitation Forecast

- Forecast precipitation over the next week is very little to none at all.



Predicted Inches of Precipitation



Source(s): National Weather Service Weather Prediction Center; image courtesy of Drought.gov

Last Updated: 08/23/24

Memphis, TN

Image Caption: National Weather Service Weather Prediction Center courtesy of drought.gov
7-Day Quantitative Precipitation
Forecast Valid August 23-31, 2024





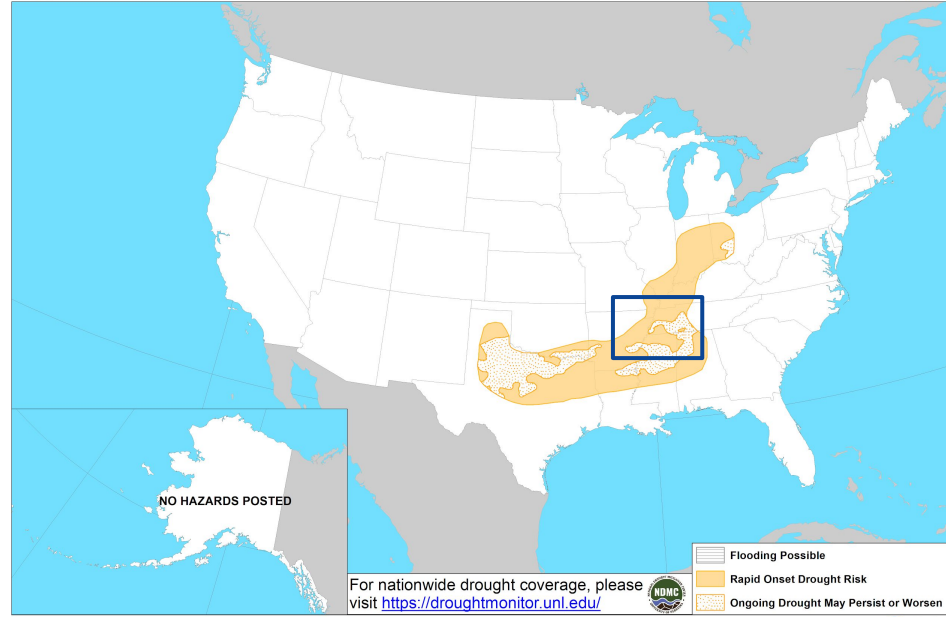
U.S. Hazards Outlook

Links to the latest Climate Prediction Center 8 to 14-day [Temperature Outlook](#) and [Precipitation Outlook](#).

- Rapid onset drought is expected to develop in portions of northwest TN, eastern AR, and northwest MS.
- Existing drought conditions may persist or worsen across north-central MS and portions of West TN.



Day 8-14 U.S. Hazards Outlook
Valid: 08/30/2024-09/05/2024



Climate Prediction Center
Made: 08/22/2024 3PM EDT

Follow us:
www.cpc.ncep.noaa.gov

Image Caption:
[Days 8 to 14 U.S. Hazards Outlook](#) Valid 8/30/2024 through 9/05/2024.





Long-Range Outlooks

The latest monthly and seasonal outlooks can be found on the [CPC homepage](#)

- The Mid-South has a 40-50% chance of experiencing above normal temperatures for the remainder of August.
- There is also a 30-50% chance that rainfall amounts will be below normal through the remainder of August.

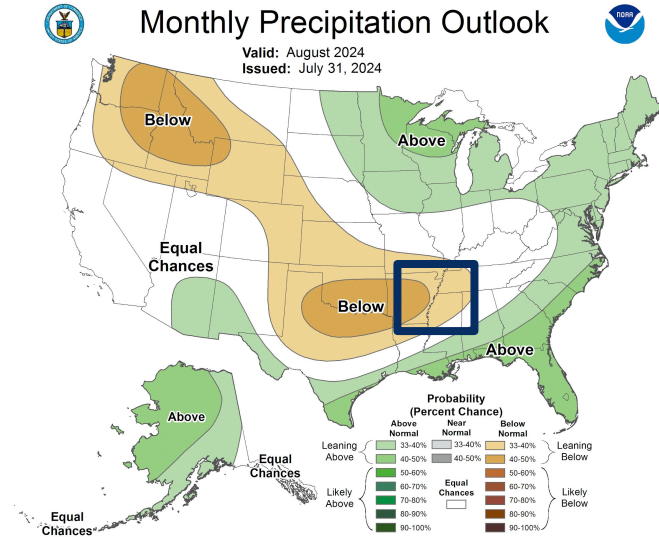
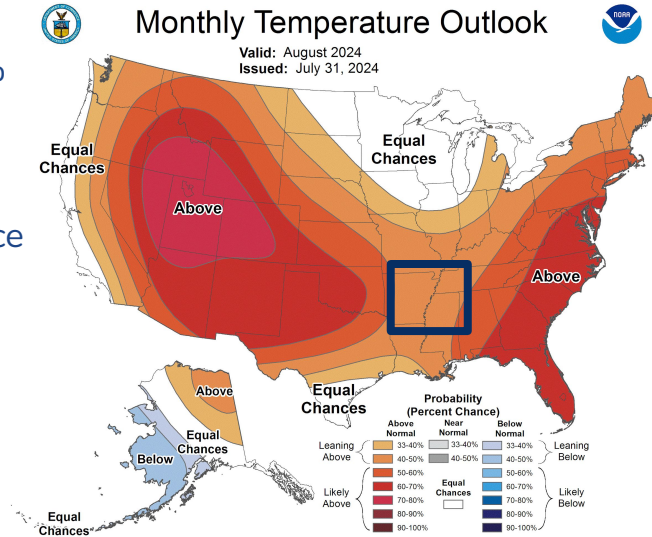


Image Captions:

Left - [Climate Prediction Center Monthly Temperature Outlook](#)

Right - [Climate Prediction Center Monthly Precipitation Outlook](#)

Valid August 2024





Drought Outlook

The latest monthly and seasonal outlooks can be found on the [CPC homepage](#)

- Drought conditions are expected to persist or potentially worsen across portions of the Mid-South.

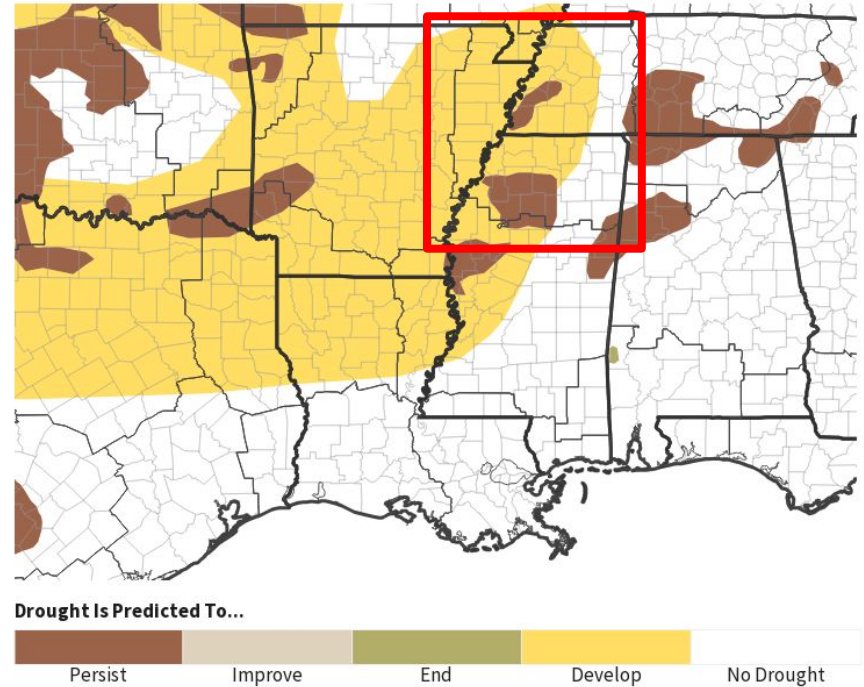


Image Caption:
Climate Prediction Center Seasonal Drought Outlook Released
08/15/2024 valid through 11/30/2024

Links to the latest:

- [Climate Prediction Center Monthly Drought Outlook](#)
- [Climate Prediction Center Seasonal Drought Outlook](#)