

WFO Midland, Texas

## MONTHLY REPORT OF HYDROLOGIC CONDITIONS

REPORT FOR:

MONTH

September

YEAR

2021

SIGNATURE

J. DeBerry

In Charge of HSA

DATE

October 15, 2021

TO: Hydrometeorological Information Center, W/OH2  
 NOAA / National Weather Service  
 1325 East West Highway, Room 7230  
 Silver Spring, MD 20910-3283

*When no flooding occurs, include miscellaneous river conditions, such as significant rises, record low stages, ice conditions, snow cover, droughts, and hydrologic products issued (NWS Instruction 10-924)*

An X inside this box indicates that no river flooding occurred within this hydrologic service area.

September was a dry month, with little notable hydrologic activity, even as the synoptic pattern transitioned from summer to fall. No flooding was reported.

Precipitation amounts from area ASOS's:

City	ASOS ID	September	August
Carlsbad, NM	KCNM	1.17"	2.17"
Fort Stockton	KFST	0.22"	2.00"
Guadalupe Pass	KGDP	0.34"	8.98"
Midland Int'l	KMAF	0.11"	0.84"
Odessa	KODO	0.09"	1.13"
Terrell County	K6R6	0.89"	0.86"
Wink	KINK	0.26"	0.83"

Precipitation amounts from area AWOS's:

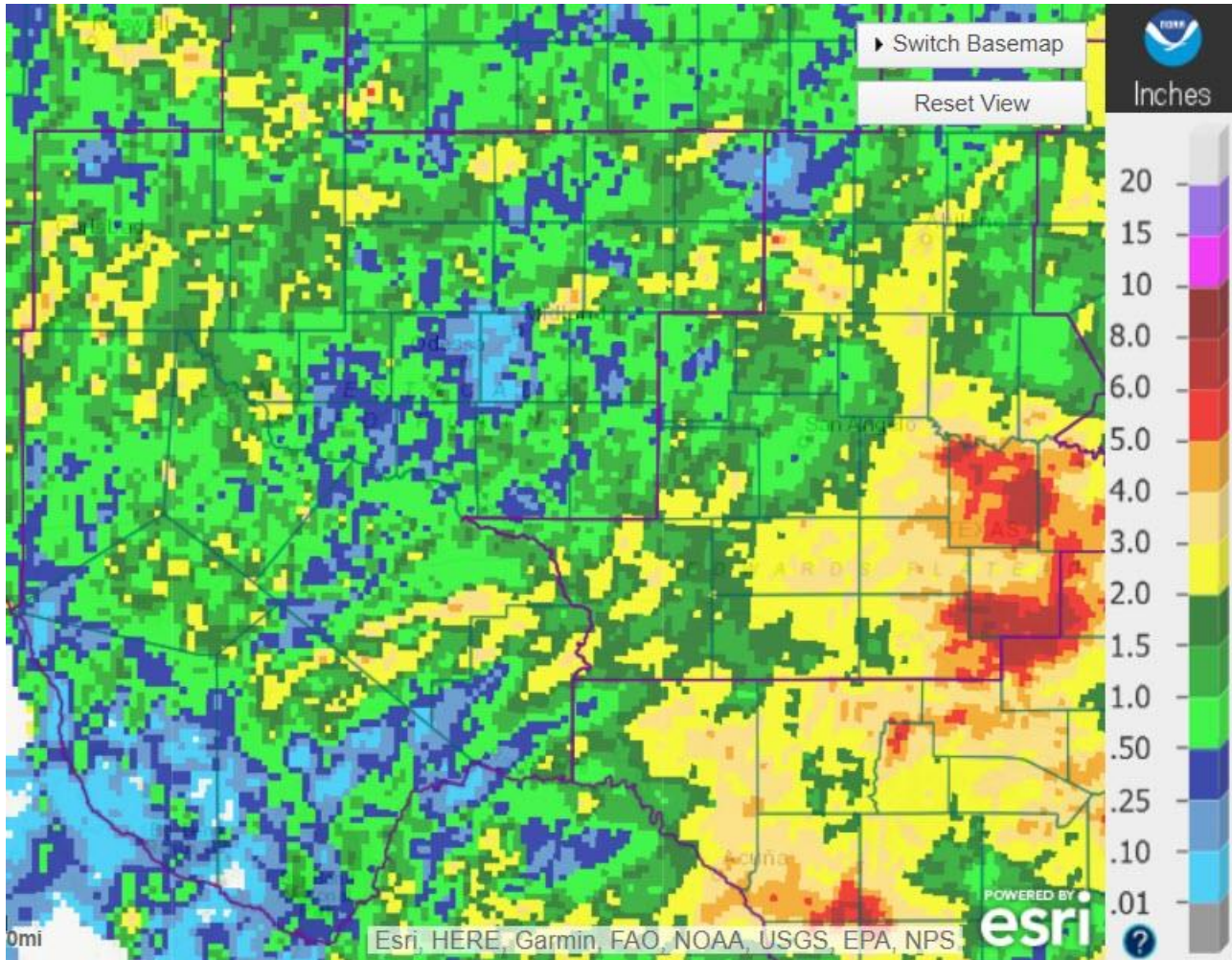
City	AWOS ID	September	August
Alpine	KE38	1.06"	2.62"
Andrews County	KE11	0.39"	0.83"
Artesia, NM	KATS	0.27"	1.80'
Big Spring	KBGP	2.08"	2.32"
Culberson County	KVHN	0.23"	3.14"
Gaines County	KGNC	0.01"	0.02"
Hobbs, NM	KHOB	0.33"	0.52"
Lamesa Municipal	KLUV	0.01"	2.06"
Marfa	KMRF	1.17"	3.72"
Midland Airpark	KMDD	0.03"	0.46"
Pecos County	KPEQ	0.77"	2.19"
Presidio County	KPRS	0.32"	2.15"
Reagan County	KE41	1.17"	M

Snyder	KSNK	1.69"	0.78"
--------	------	-------	-------

Some other locations in the HSA that received notable amounts of precipitation for September were:

I-10/I-20 Split, Reeves County	1.99"
Fort Davis, Jeff Davis County	2.23"
Elephant Mountain, Brewster County	2.32"
Dog Canyon, Culberson County	2.40"

98 locations reported rainfall for the month of September, for an HSA average of 0.71".



### September Precipitation

Normal September precipitation for Midland International Air and Space Port is 1.66". Total precipitation for 2021 ending October 1<sup>st</sup> was 13.67", or 2.68" above normal. Normal yearly rainfall is 13.51.



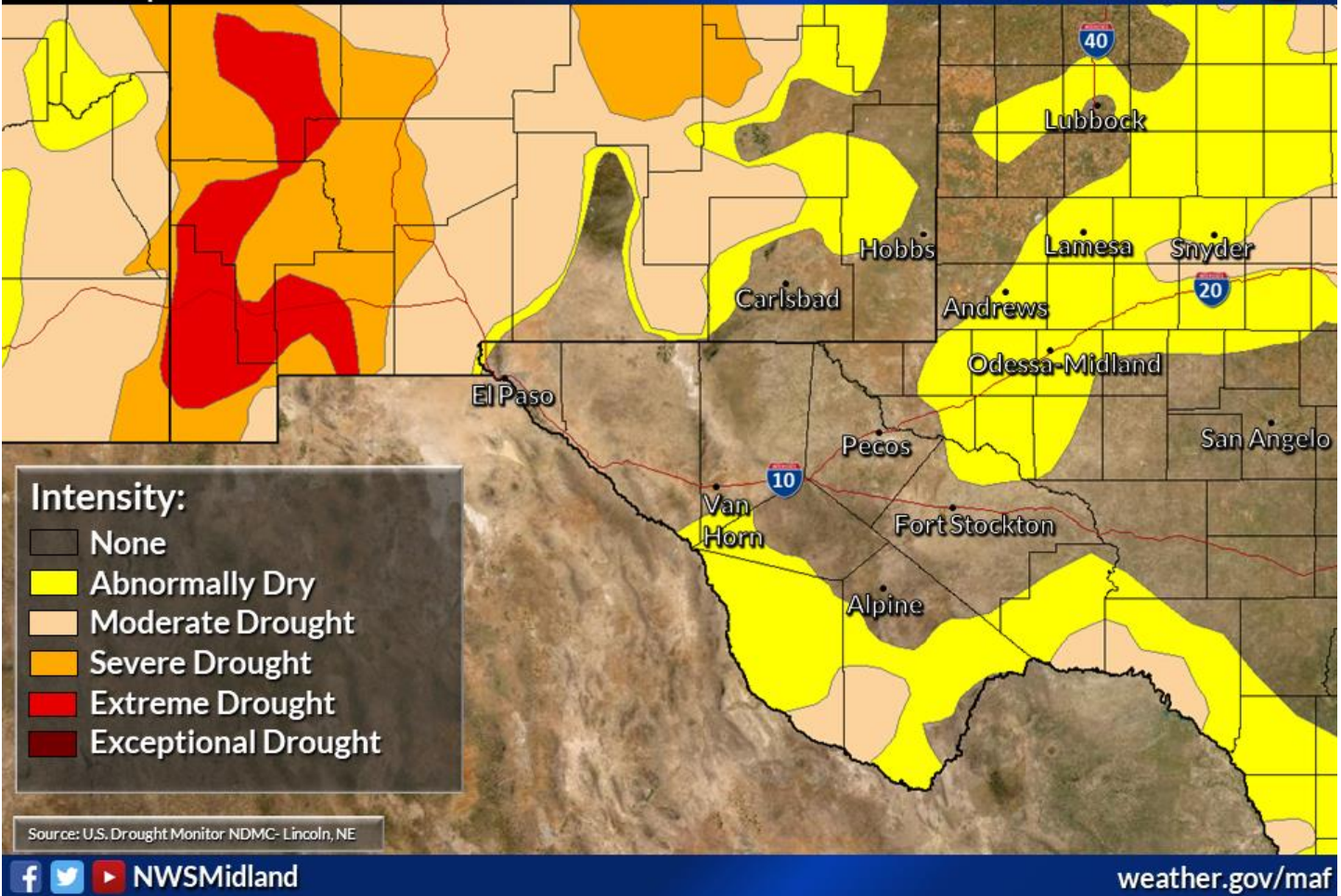
# Latest Drought Conditions

Weather Forecast Office  
Midland/Odessa, TX



Valid 30 September 2021

Issued October 5, 2021 3:09 AM CT



Source: U.S. Drought Monitor NDMC- Lincoln, NE

[f](#) [t](#) [v](#) NWSMidland

[weather.gov/maf](http://weather.gov/maf)

Reservoir levels across the HSA averaged 64.0% of conservation capacity as of October 1<sup>st</sup>:

Reservoir (County, State)	October 1 Conserv Cap (%)	September 1 Conserv Cap (%)
JB Thomas (Scurry, TX)	44.3	46.2
Colorado City (Mitchell, TX)	79.0	81.0
Champion Creek (Mitchell, TX)	74.2	74.8
Natural Dam Salt Lake (Howard, TX)	48.3	48.4
Moss Creek (Howard, TX)	67.0	68.0
Brantley (Eddy, NM)	74.0	91.0
Avalon (Eddy, NM)	51.0	88.0
Red Bluff (Reeves, TX)	74.0	75.6

## Non-Routine Products Issued for September:

- Flash Flood Watches (FFA): 3
- Flash Flood Warnings (FFW): 3
- Flash Flood Statements (FFS): 3
- Flood Advisories/Statements (FLS): 25

Flood Warnings (FLW): 0

**Total Non-Routine Products Issued: 34**

**cc: email: COE ABQ, HIC, IBWC ELP, IBWC PRD, LCRA, NWS ABQ, NWS EPZ, NWS LBB,  
NWS MAF, NWS SJT, SRH, TAMU, TCEQ, USGS CNM, USGS SJT, WGRFC**