



Drought Information Statement for West Texas & Southeast New Mexico

Valid 09/2/2024

Issued By: WFO Midland/Odessa

Contact Information: sr-maf.webmaster@noaa.gov

- This product will be updated October 2, 2024 or sooner if drought conditions change significantly.
- Please see all currently available products at <https://drought.gov/drought-information-statements>.
- Please visit <https://www.weather.gov/maf/DroughtInformationStatement> for previous statements.



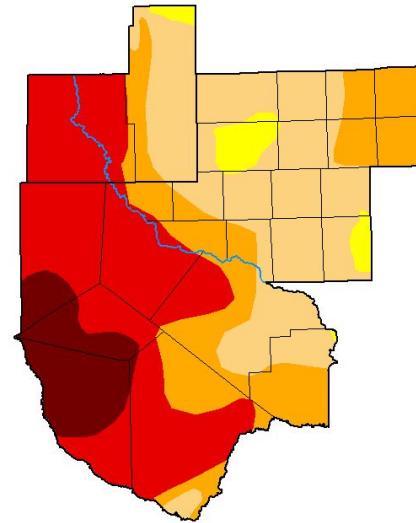


U.S. Drought Monitor

Link to the [latest U.S. Drought Monitor](#) for [region]

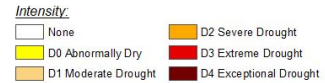
- DROUGHT CONDITIONS WORSEN FOR WEST TEXAS AND SE NM.
- Drought intensity and Extent
 - D4 (Exceptional Drought): Portions of Culberson, Jeff Davis, and Presidio Counties.
 - D3 (Extreme Drought): Extending south through Eddy County into Culberson, Jeff Davis, and all of Presidio counties. Portions of the Davis Mountains down into the Big Bend.
 - D2 (Severe Drought): Portions of Terrell and Reeves counties as well as areas along the Pecos River Valley.
 - D1 (Moderate Drought): Portions of Lea County, much of the Permian Basin, as well as Pecos and Brewster counties.
 - D0: (Abnormally Dry): Portions of the Permian Basin and Lower Trans Pecos

U.S. Drought Monitor Midland/Odessa, TX WFO



August 27, 2024
(Released Thursday, Aug. 29, 2024)
Valid 8 a.m. EDT

	Drought Conditions (Percent Area)					
	None	D0	D1	D2	D3	D4
Current	0.00	3.29	31.38	22.55	33.49	9.29
Last Week 08-20-2024	0.89	14.96	27.06	20.90	26.89	9.29
3 Months Ago 05-28-2024	10.89	11.24	41.88	26.07	7.45	2.48
Start of Calendar Year 01-01-2024	13.72	25.95	26.91	21.74	5.45	6.24
Start of Water Year 09-26-2023	0.00	5.05	30.07	32.49	23.81	8.58
One Year Ago 08-29-2023	2.26	9.12	14.47	54.62	19.53	0.00



The Drought Monitor focuses on broad-scale conditions. Local conditions may vary. For more information on the Drought Monitor, go to <https://droughtmonitor.unl.edu/About.aspx>

Author:
Richard Heim
NCEI/NOAA



droughtmonitor.unl.edu

Image Caption: U.S. Drought Monitor valid 8am EST August 29th.



Recent Change in Drought Intensity

Link to the latest [1-week change map](#) for [region]

- One Week Drought Monitor Class Change.
 - One class degradation across the Trans Pecos and portions of the Permian Basin.
 - Isolated areas received a two class degradation from recent heat.

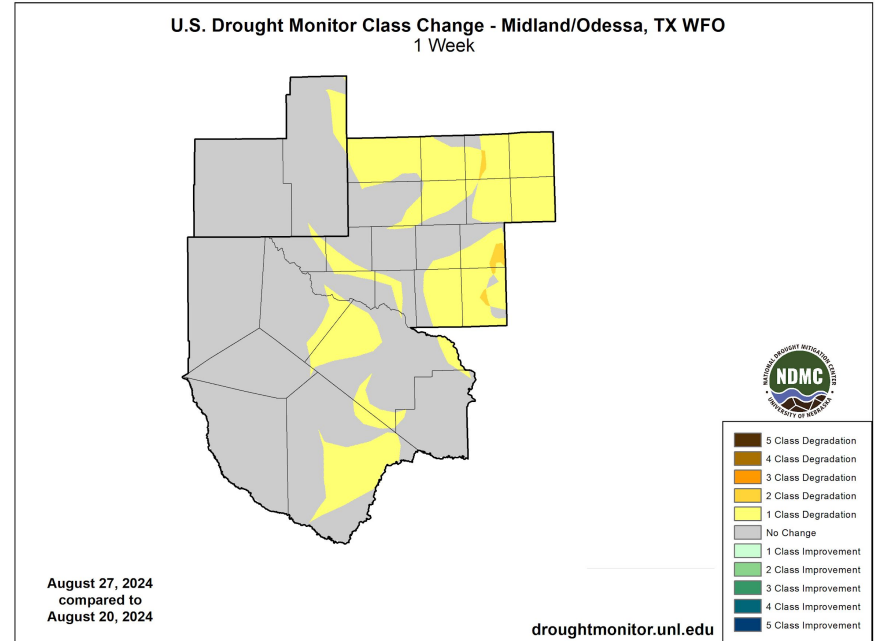


Image Caption: U.S. Drought Monitor 1-week change map valid 8am EST August 27th.

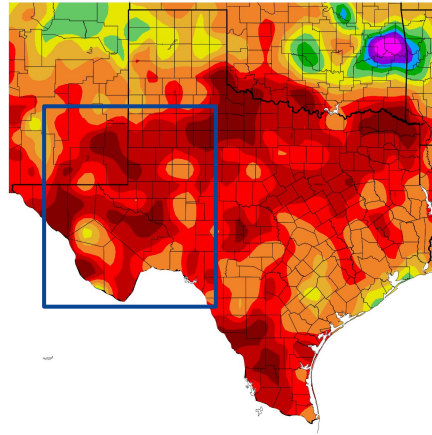




Precipitation

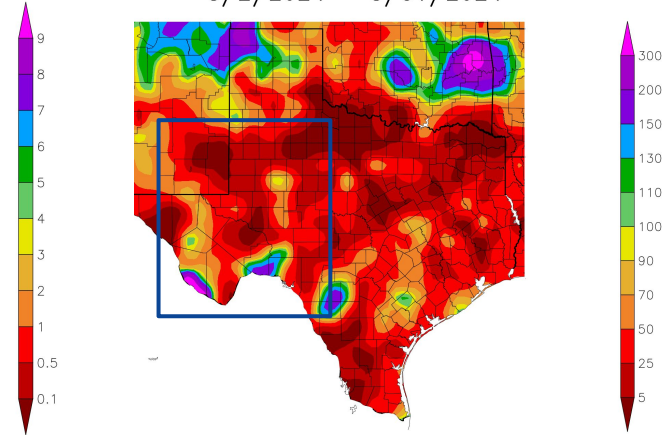
- Most of the area saw well below normal precipitation for August with only isolated areas along the Rio Grande seeing wetting rains.

Precipitation (in)
8/2/2024 – 8/31/2024



Generated 9/1/2024 at HPRCC using provisional data.

Percent of Normal Precipitation (%)
8/2/2024 – 8/31/2024



NOAA Regional Climate Centers at HPRCC using provisional data.

NOAA Regional Climate Centers

Image Captions:
Left - Precipitation Amount for West Texas and SE NM
Right - Percent of Normal Precipitation for West Texas and SE NM
Data Courtesy High Plains Regional Climate Center.
Data over the past 30 days ending August 31, 2024

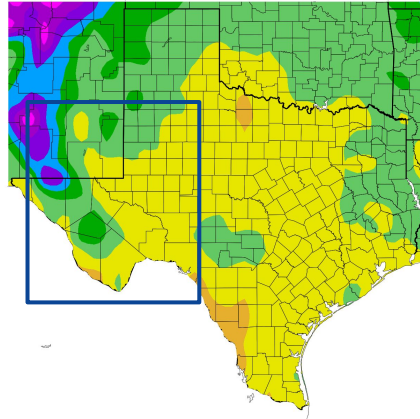




Temperature

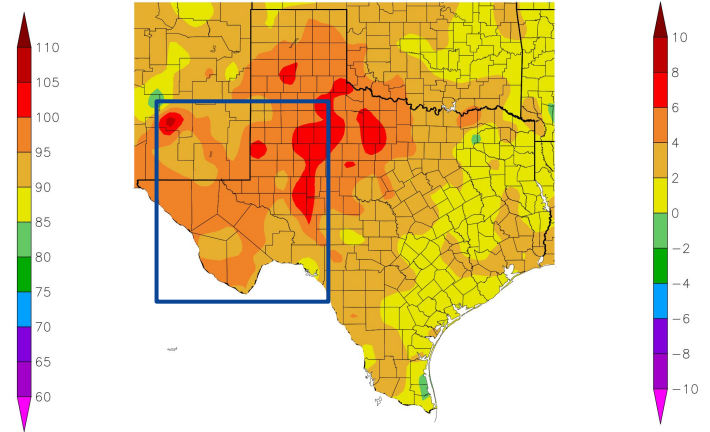
- Temperatures were a few to several degrees above average for the month of August for the entire region. August sees the peak and subsequent decline of average temperatures during the year.

Temperature (F)
8/2/2024 – 8/31/2024



Generated 9/1/2024 at HPRCC using provisional data.

Departure from Normal Temperature (F)
8/2/2024 – 8/31/2024



NOAA Regional Climate Centers ²⁴ at HPRCC using provisional data.

NOAA Regional Climate Centers

Image Captions:
Left - Average Temperature
Right - Departure from Normal Temperature
Data Courtesy High Plains Regional Climate Center.
Data over the past 30 days ending August 31, 2024





Summary of Impacts

Links: See/submit [Condition Monitoring Observer Reports \(CMOR\)](#) and view the [Drought Impacts Reporter](#)

Hydrologic Impacts

- Most area rivers and tributaries remain near baseflow. Area reservoirs are at 46.5% conservation capacity. See next page for more details.

Agricultural Impacts

- Per Agrilife Texas A&M [Crop and Weather Report](#), Livestock in fair to poor condition. Cotton and sorghum struggled with the extended heat and dry conditions of August. Corn was near completion.

Fire Hazard Impacts

- Fire weather impacts will be low through the summer given generally lighter winds. Lightning starts may be possible with isolated storms over the mountains.

Other Impacts

- There are no known impacts at this time.

Mitigation Actions

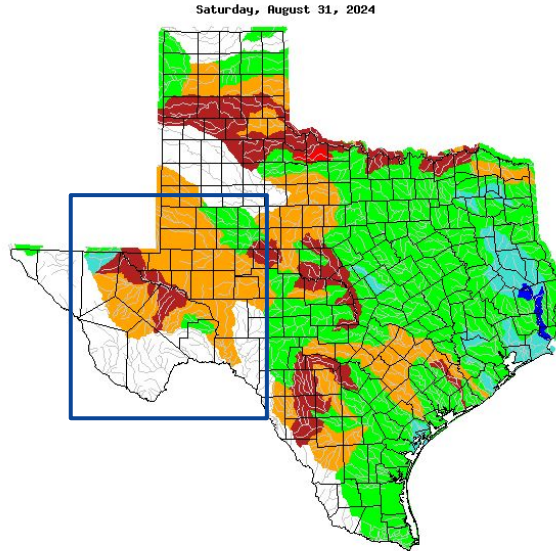
- Please refer to your municipality and/or water provider for mitigation information.





Hydrologic Conditions and Impacts

- The Colorado and Delaware Rivers, as well as Independence Creek, are normal to above normal.
- All other river and tributary basins are below to much below normal.
- [Midland Monthly Hydrology Report for July](#)
- [August Rainfall](#)



Explanation - Percentile classes							
Low	<10 Much below normal	10-24 Below normal	25-75 Normal	76-90 Above normal	>90 Much above normal	High	No Data

Reservoir	Pool Elevation	Current Elevation	% Full
JB Thomas	2258.00	2223.70	16.5
Colorado City	2070.20	2054.62	39.7
Champion Creek	2083.00	2066.61	51.7
Natural Dam Salt Lake	2457.00	2447.29	48.4
Moss Creek	2337.00	2331.48	76.0
Brantley	3256.70	3246.03	45.0
Avalon	3177.40	3175.04	57.0
Red Bluff	2827.40	2810.97	37.5

Image Caption: [USGS 7 day streamflows for Texas](#), valid 31 August 2024

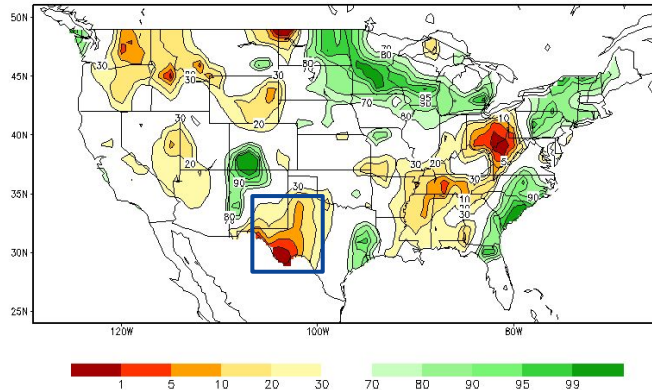




Agricultural Impacts

- Soil moisture continues to rank below the 10-20th percentiles across much of West Texas and SE NM with the worst conditions over the Marfa Plateau and along the Rio Grande.
- During the past month, crop moisture has become noted as being excessively dry as below normal precipitation has occurred.

Calculated Soil Moisture Ranking Percentile
AUG 30, 2024



Crop Moisture Index by Division
Weekly Value for Period Ending AUG 24, 2024
Short Term Need vs. Available Water in a Shallow Soil Profile

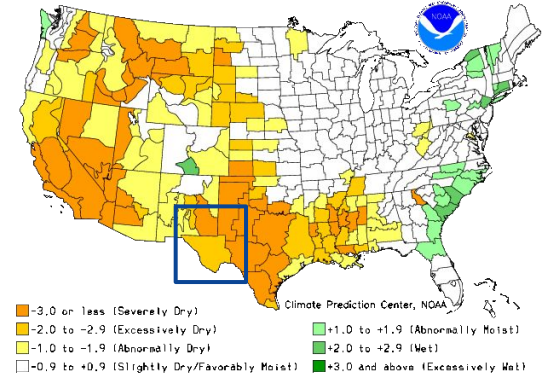


Image Captions:

Left: CPC Calculated [Soil Moisture Ranking Percentile](#) valid Aug 30, 2024

Right: [Crop Moisture Index by Division](#). Weekly value for period ending Aug 24, 2024





Seven Day Precipitation Forecast

- Measurable precipitation remains possible areawide over the next week with the highest amounts likely seen over the eastern Permian Basin and down across the Lower Trans Pecos.
- Without continued and consistent rainfall, drought conditions will continue.

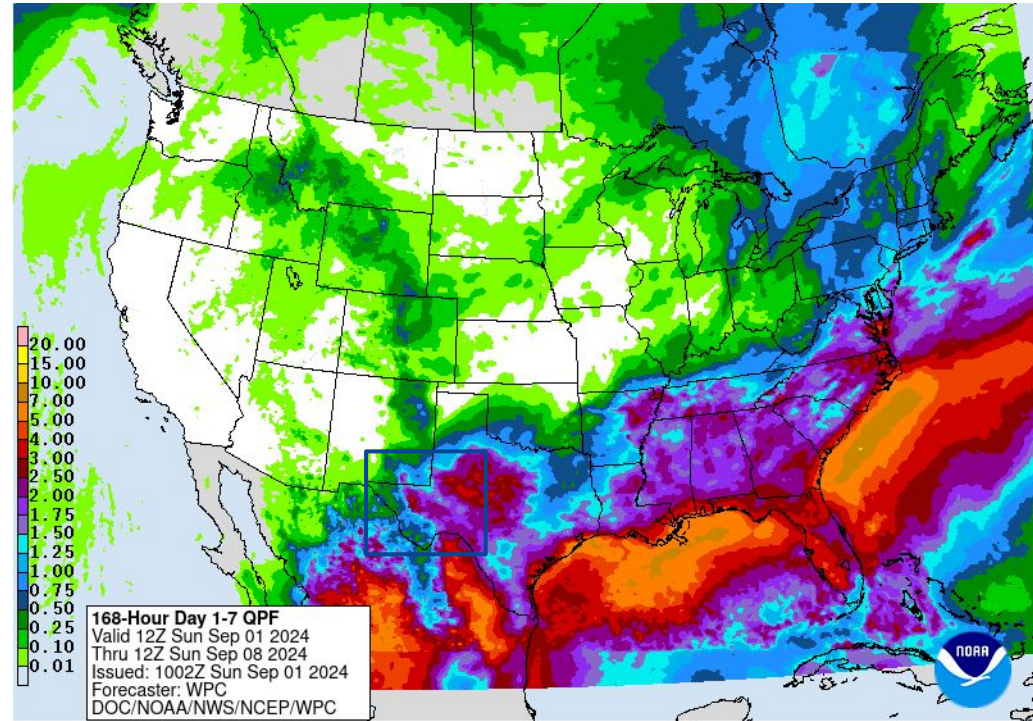


Image Caption: Weather Prediction Center [7-day precipitation forecast](#) valid Sunday Sept 01 to Sunday Sun 08





Drought Outlook

The latest monthly and seasonal outlooks can be found on the [CPC homepage](#)

- The outlook for September is a somewhat positive one as cooler temperatures and a good chance for wetting rains is in the forecast for the first half of the month. Drought conditions look to improve slightly, but still remain.

U.S. Monthly Drought Outlook Drought Tendency During the Valid Period

Valid for September 2024
Released August 31, 2024

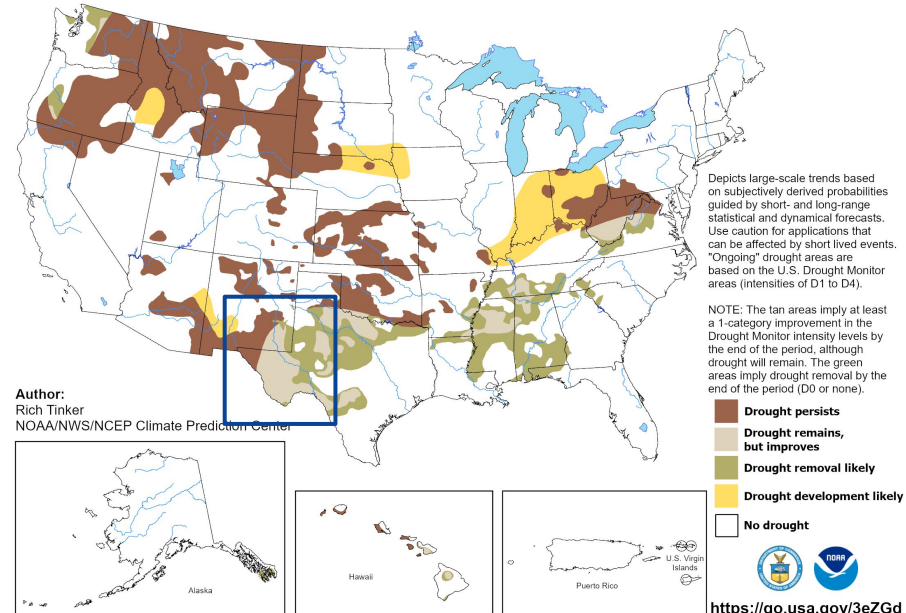


Image Caption:

Climate Prediction Center Monthly Drought Outlook Released 08 31, 2024 valid for 09 2024

Links to the latest:

[Climate Prediction Center Monthly Drought Outlook](#)

[Climate Prediction Center Seasonal Drought Outlook](#)



National Oceanic and Atmospheric Administration
U.S. Department of Commerce

National Weather Service
Midland/Odessa