



SKYWARN Newsletter

Program Update: 2025 Edition

Fall 2024/Winter 2025 Virtual Classes Announced!

UPCOMING ONLINE COURSE SCHEDULE:

~~BASIC COURSE:~~

~~Date: Fri Dec 6th 6 - 8PM CT~~

~~ADVANCED COURSE:~~

~~Date: Fri Dec 20th 5:30 - 8PM CT~~

BASIC COURSE:

Date: Thu, Jan 9th 6 - 8PM CT

BASIC COURSE:

Date: Thu, Jan 30th 6 - 8PM CT

BASIC COURSE:

Date: Wed, Feb 19th 6 - 8PM CT

ADVANCED COURSE:

Date: Fri, Mar 7th 5:30 - 8PM CT

BASIC COURSE:

Date: Thu, Mar 20th 6 - 8PM CT

IN-PERSON COURSE SCHEDULE:

Terrebonne Parish, LA

BASIC COURSE:

Date: Thu, Feb 13th 2025 4:30-6PM CT

Address: Terrebonne Parish EOC:
101 Government St, Gray, LA 70359

More Coming Soon! Check back!

The NWS New Orleans/Baton Rouge office is happy to announce another round of Basic & Advanced SKYWARN courses to be offered virtually for the Winter 2024/2025 Season! Be sure to spread the news to family and friends or anyone that would be interested! As a reminder, it is recommended that you attend refresher courses every two to three years.

These courses are always presented live, with interactive polls to maximize engagement. You will also be able to interact and talk with a NWS forecaster during a Q and A session at the very end!

TO REGISTER, VISIT:

[WEATHER.GOV/NEWORLEANS/SKYWARN](https://www.weather.gov/neworleans/skywarn)

Course dates may be subject to change, especially if hazardous weather threatens the area during the scheduled class time.

COURSE DESCRIPTION:

Basic Course: **[NEW FORMAT!]** Covers all the basics associated with tornadoes, hazards, the EF-scale, and local climatology, then dives into other forms of severe weather, including pulse (summer) storms, microbursts, squall lines and flash flooding. Each Basic course includes interactive polls, and ends with a short quiz to apply all you have learned. This course lasts around 2 hours, not including any discussion or questions at the end.

Advanced Courses: **[NEW FORMAT!]** **[Highly recommended to take the Basic course before the Advanced Course]** Topics include severe weather forecasting; radar and its applications; storm mode and motion; and supercells and types of tornadoes. Each Advanced course includes interactive polls, and ends with true/false tornado myths. This course lasts around 2.5 hours, not including any discussion or questions at the end.

Top News: NWS Reveals New Cold Weather Hazard Products!

The NWS is simplifying its suite of cold weather products this year, with the goal to improve messaging and provide better decision-making services for the public. Social science surveys and data collected during public and partner engagements led to the consolidation of Wind Chill and Hard Freeze products into a suite of new products to help message impacts in both cold air temperature and dangerous wind chills. This change went into effect October 1st, 2024.

To read more about Hazard Simplification, including a more in-depth understanding for the consolidation of cold weather products in effect for all NWS offices, visit the following link: <https://www.weather.gov/media/hazardsimplification/Cold-1-pager-for-SCN-3b%281%29.pdf>

There are three main changes:

1. Removing the Hard Freeze Warning Product.
2. Changing Wind Chill Advisory, Watch and Warning to Extreme Cold Watch and Warning
3. Changing the thresholds/criteria that we use to issue these products.

The thresholds below are for our local LIX warning forecast area, divided by geographic area (north vs south) as well as temperatures and wind chills.:

OLD Products	NEW Products
Freeze Warning - First two instances of 32°F Every instance of 32°F on Southshore OR after prolonged warm period	Freeze Warning - First two instances of 32°F Every instance of 32°F on Southshore OR after prolonged warm period
Hard Freeze Warning - 25°F or less Air Temperature Anywhere	Cold Weather Advisory - 25°F South/20°F North or less Air Temperature OR 25°F South/20°F North or less Wind Chill
Wind Chill Advisory - Wind chills are expected to drop to -5F or less, with winds around 10 mph or more.	Extreme Cold Weather Warning - 15°F South/10°F North or less Air Temperature OR 15°F South/10°F North or less Wind Chill
Wind Chill Warning - Wind chills are expected to drop to -20F or less, with wind speeds around 10 mph or more.	Extreme Cold Weather Watch- 15°F South/10°F North or less Air Temperature OR 15°F South/10°F North or less Wind Chill

NWS New Orleans/Baton Rouge

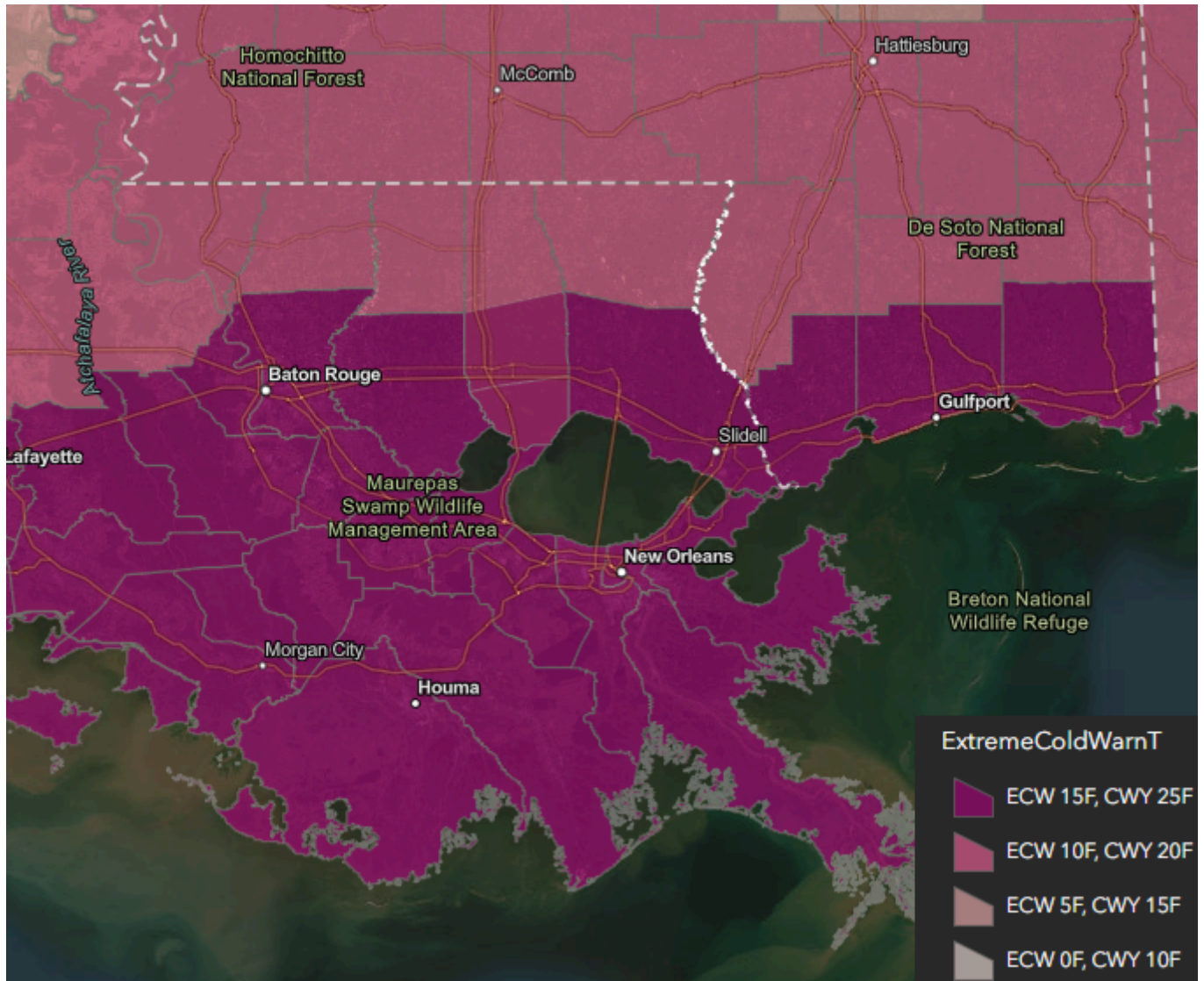


The temperature and wind chill threshold values are based on climatology and what temperatures impact the local area.

(Continued) NWS Reveals New Cold Weather Hazard Products!

The map below illustrates the threshold changes by geographic area. Be advised, changes to this criteria could occur after this season, to better suit this national product change tailored to our local area.

ECW is Extreme Cold Warning
CWY is Cold Weather Advisory



Mississippi Coast and South of I-10 (dark pink):

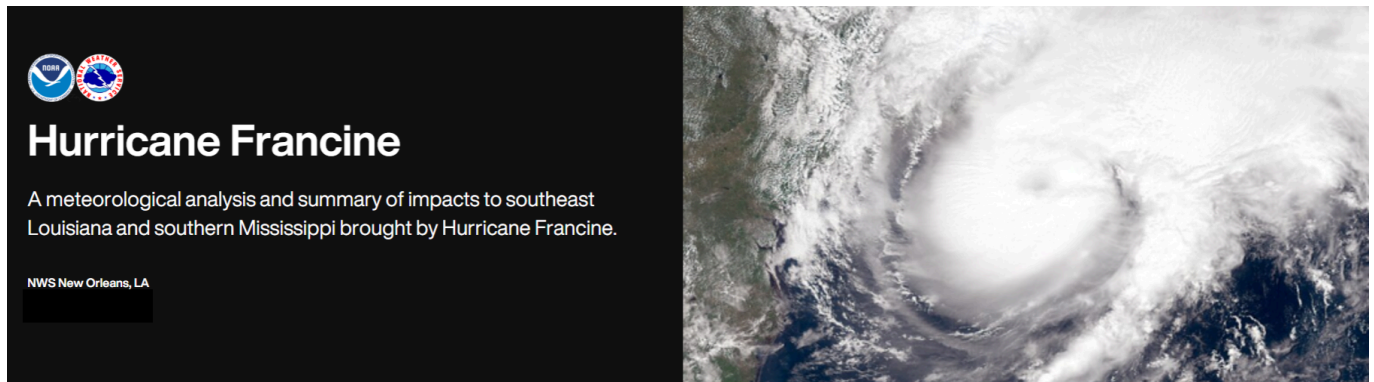
- **Cold Weather Advisory:** Issued when temperatures or wind chills drop **below 25°F**.
- **Extreme Cold Warning:** Issued when temperatures or wind chills drop **below 15°F**.
- **Freeze Warning:** Issued when temperatures reach 32°F or below ([not overlapping with a Cold Weather Advisory](#)).

North of I-10 (light pink):

- **Cold Weather Advisory:** Issued when temperatures or wind chills drop **below 20°F**.
- **Extreme Cold Warning:** Issued when temperatures or wind chills drop **below 10°F**.
- **Freeze Warning:** Issued only for the first two freezes of the season or after an unseasonably warm spell.

To learn more about this change and more detailed information, be sure to check out our web page (top headline) or read here: <https://www.weather.gov/lix/ColdWeatherChange2024>

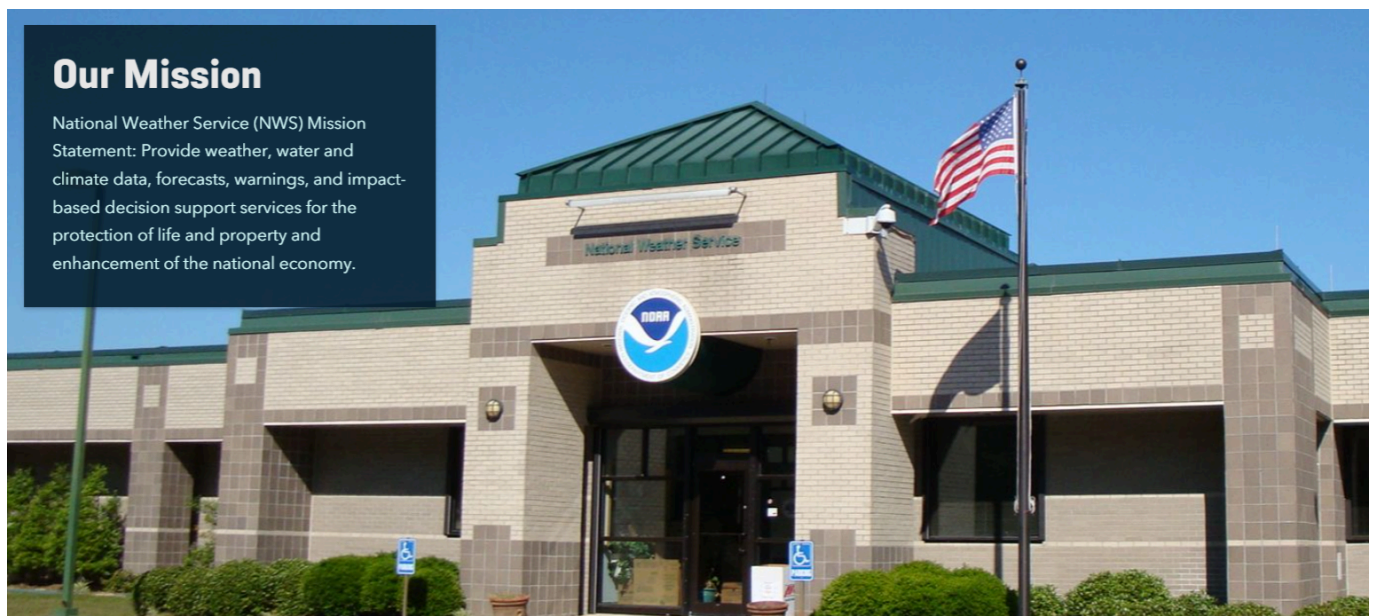
Coming Soon: NWS New Orleans Hurricane Francine Story Map



On the afternoon of September 11, 2024, Hurricane Francine made landfall in southwest Terrebonne Parish as a Category 2 storm with 100 mph winds, bringing record flash flooding, significant storm surge, and widespread wind damage across southeastern Louisiana and southern Mississippi.

NWS New Orleans summarized the storm's history, meteorology, and impacts in an ArcGIS Story Map. Be sure to check our social media when it is revealed soon!

Updated: NWS New Orleans "About Us" Story Map Released!



In February 2024, WFO New Orleans launched an updated "About Us" page offering a behind-the-scenes look at our work, services, and staff. It includes:

- An overview of our mission and services.
- A historical timeline of the office's evolution.
- A "Meet the Team" section highlighting our forecasters and staff.
-

Visit the page at weather.gov/NewOrleans under "Local Programs" > "About Us" or via the link below!

Check it out! <https://storymaps.arcgis.com/stories/d570a80cd3244852aedd81da2c4e3296>

Reminder: An (Additional) Method to Send Reports!

**TEXT US
YOUR REPORTS!**

**TEXT:
504-527-8678**

NATIONAL WEATHER SERVICE
WEATHER.GOV / NEWORLEANS

If possible, let us know:

- What**
[tell us what happened]
- Where**
[where the severe weather occurred at]
- When**
[the time the severe weather occurred]

Examples Include...

- Tree Damage
- Hail
- Flooding

Our local NWS office is continuing to use a new (additional) method for spotters & the public to send reports of severe weather! A new texting option gives you the ability to send your reports (and even photos) directly to us from your cell phone!

The graphic above will continue to be posted on our social media platforms ahead/during severe weather events and will remain experimental through portions of the upcoming 2025 season, and may be subject to change/be removed pending the testing phase. If you see severe weather, give this option a try to (safely) send your reports!

Reporting Reminders

As always mentioned in our Basic and Advanced courses, there are multiple ways to relay weather reports to the forecasters here at NWS New Orleans/Baton Rouge.

What to Report:

- Hail of ANY size
- Winds greater than 58 mph
- Wind Damage
- Tornadoes, Waterspouts, Funnel Clouds
- Widespread flooding covering roadways or inundating property.

What we need to know:

- **Who you are:**
 - Let us know you are a trained spotter.
- **What you witnessed:**
 - Specific weather event
- **When the event occurred:**
 - NOT the time of the report
- **Where the event occurred:**
 - Direction and distance from your location

Always remember safety!

- Never put yourself in harm's way!
- Keep a safe distance.
- Do not expose yourself to life-threatening weather. Stay sheltered until it passes.
- NEVER get in the way of local rescue officials following a devastating weather event.

Remember, there are multiple ways to report severe weather to us directly!

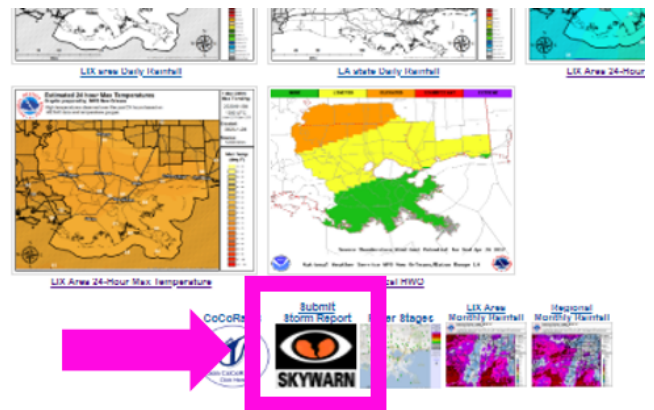
Call us!

504-522-7330
or: **985-649-0357**

Use Ext 4 to speak with a forecaster on shift.

Through our Website!

Visit www.weather.gov/lix and scroll to the bottom of the page to find the SKYWARN logo with the label "Submit Storm Report"



This will take you to a Google Form to fill out which will transmit your report directly to forecasters on shift!

Through Social Media!



@NWSNewOrleans

Any questions or concerns? Feel free to reach out to us anytime! Give us a call or email us at sr-lix.webmaster@noaa.gov

We plan to continue these newsletter updates annually to bring you the latest updates to the spotter program, as well as new changes in NWS products nationwide or locally here at WFO LIX. Stay tuned!

-Kevin Gilmore
SKYWARN Program Leader
WFO LIX New Orleans/Baton Rouge, LA