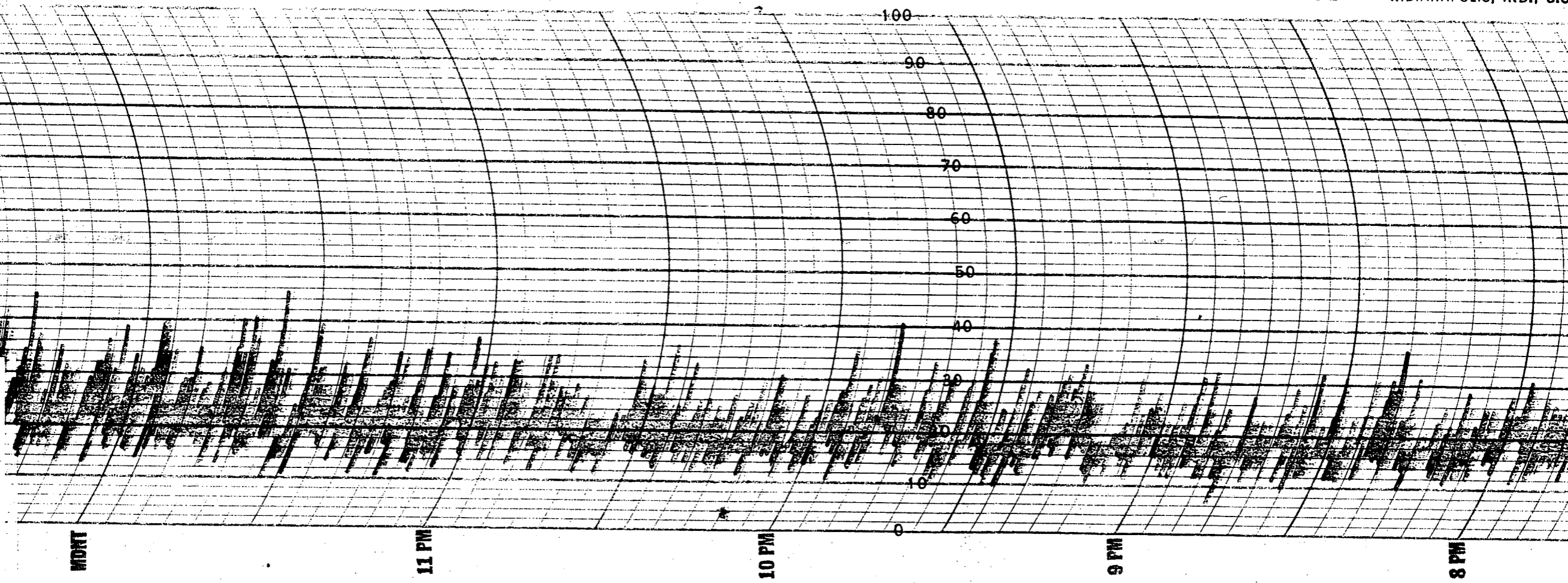
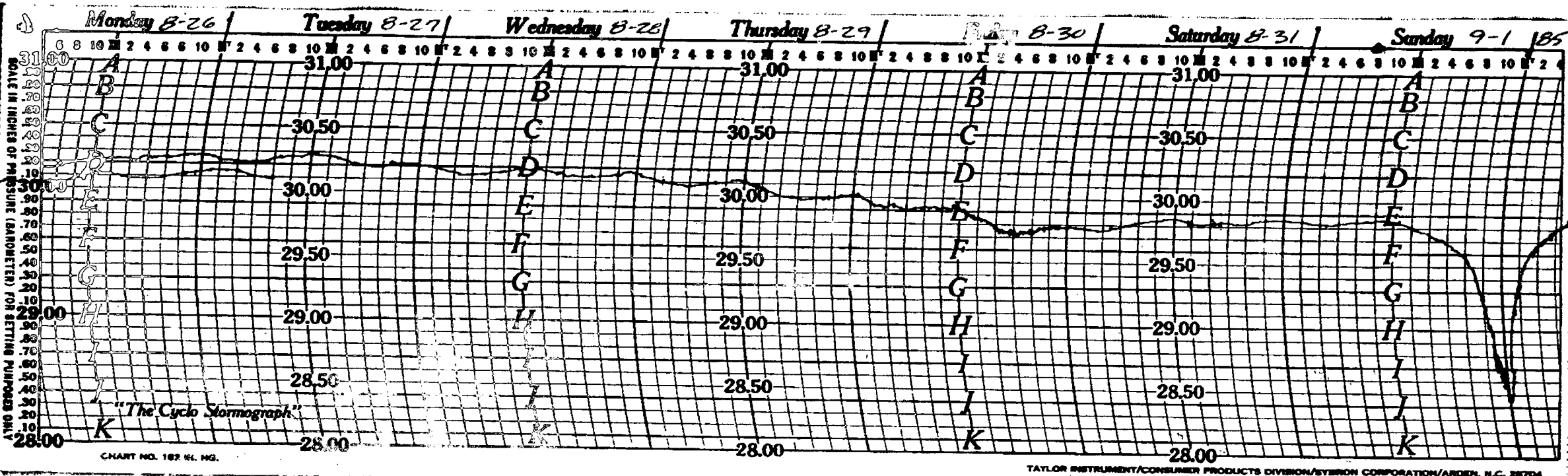


ESTERLINE ANGUS

INDIANAPOLIS, IND., U.S.

REPRODUCED AT GOVERNMENT EXPENSE





Barograph Chart taken from Oil Rig..Zapata Yorktown..Destin Dome 284

Rig was torn lose and dragged 15 miles to the northwest during hurricane Elena..Rig is at 29°42' 26" N
86°46' 49" W

9/12/85
fmc

PRINTED IN U.S.A.

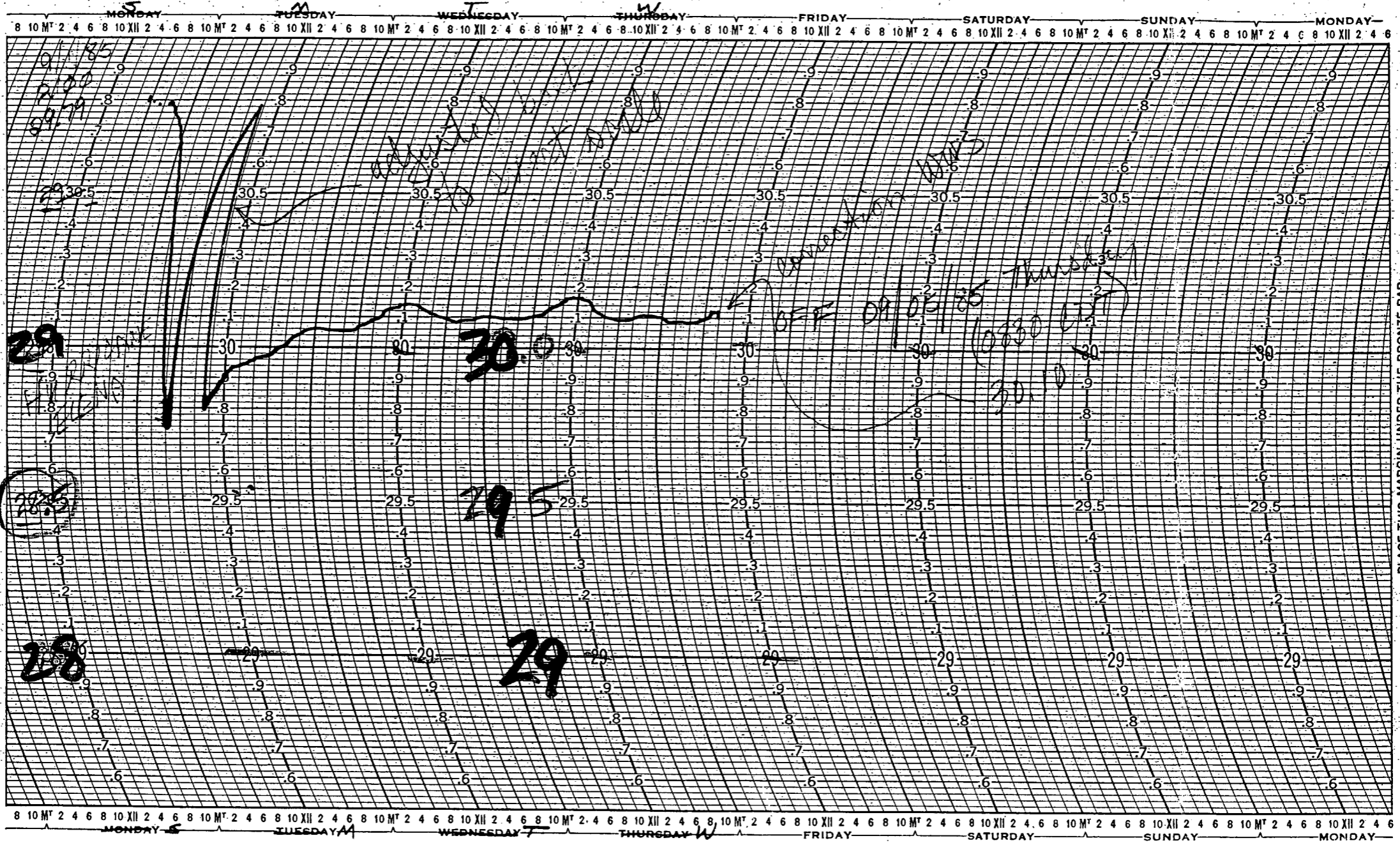
HURRICANE ELENA

MICRO-BAROGRAPH
CHART NO. 5-1071
BELFORT INSTRUMENT COMPANY
BALTIMORE, MARYLAND, U.S.A.

Daphin Island
Sea Lab

INSTRUMENT NO. _____ DATE _____ STATION _____

REMARKS



PLACE THIS MARGIN UNDER THE BRONZE BAR

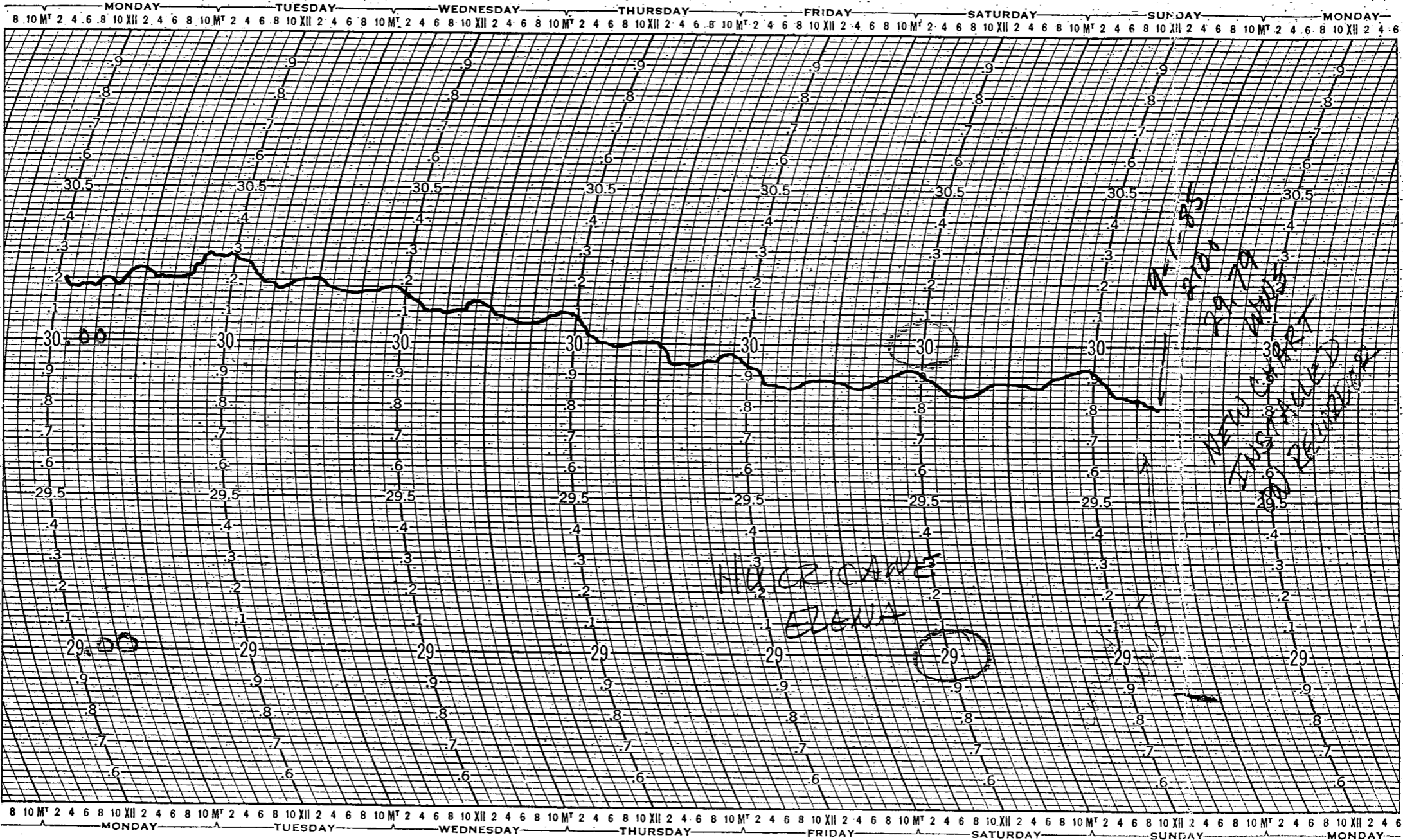
*Daphin Island
Sea Lab*

MICRO-BAROGRAPH
CHART NO. 5-1071

BELFORT INSTRUMENT COMPANY
BALTIMORE MARYLAND, U.S.A.

INSTRUMENT NO. *ON* DATE *08/26/88* STATION *1329* *30.17*

REMARKS

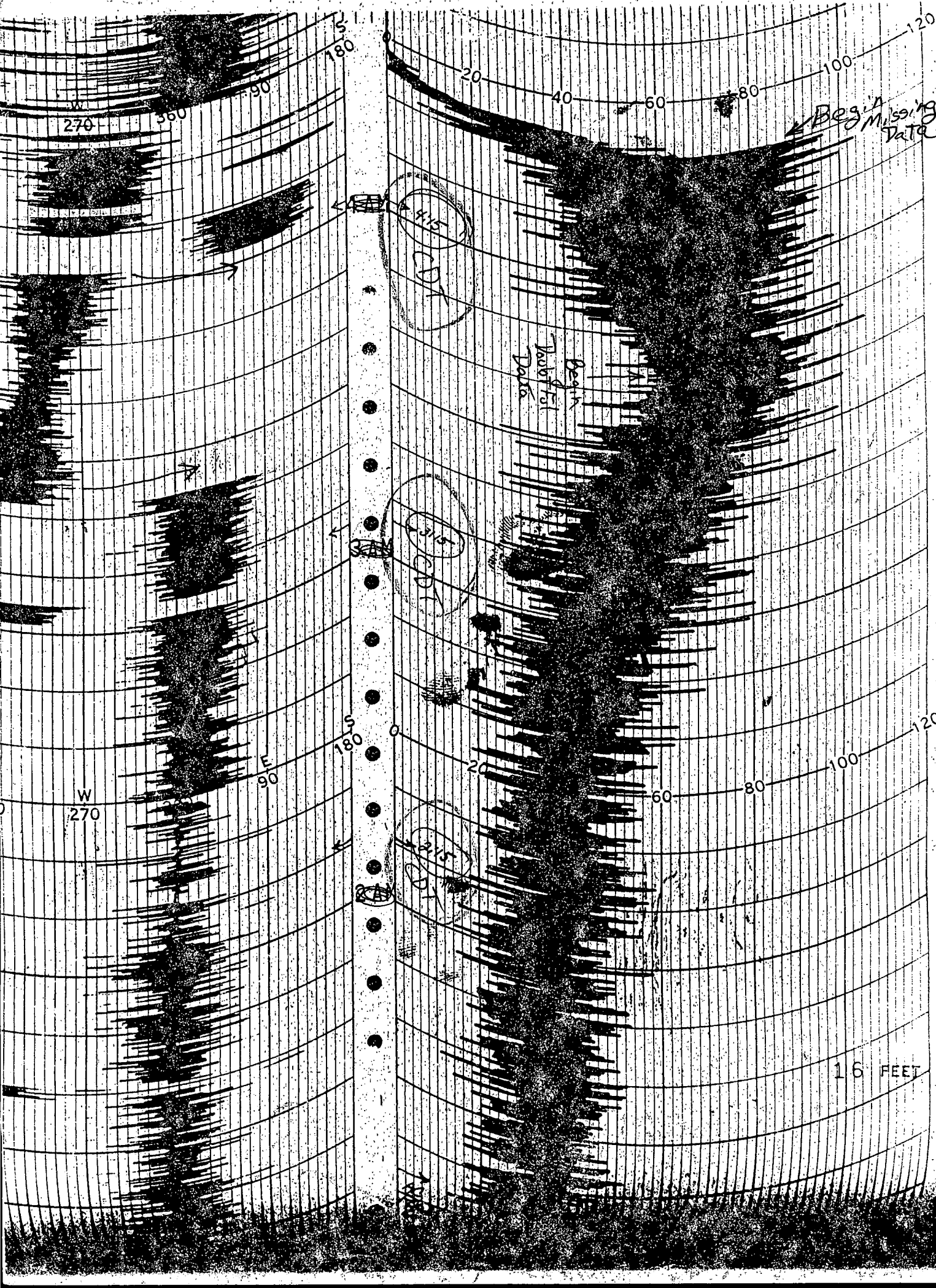


PLACE THIS MARGIN UNDER THE BRONZE BAR

Hurricane Elena — Dauphin Island SEA LAB 9-2-85

THE BENDIX CORP. ENVIRONMENTAL & PROCESS INSTRUMENTS DIVISION, BALTIMORE, MD. 21204 U.S.A.

THE BENDIX CORP. ENVIRONMENTAL & PROCESS INSTRUMENTS DIVISION, BALTIMORE, MD. 21204 U.S.A.



NOAA-WSO, MOBILE, ALABAMA

STATION PRESSURE (IN INCHES) AT

TIME OF RECORD 90 TH MERIDIAN ELEVATION (H.P.)

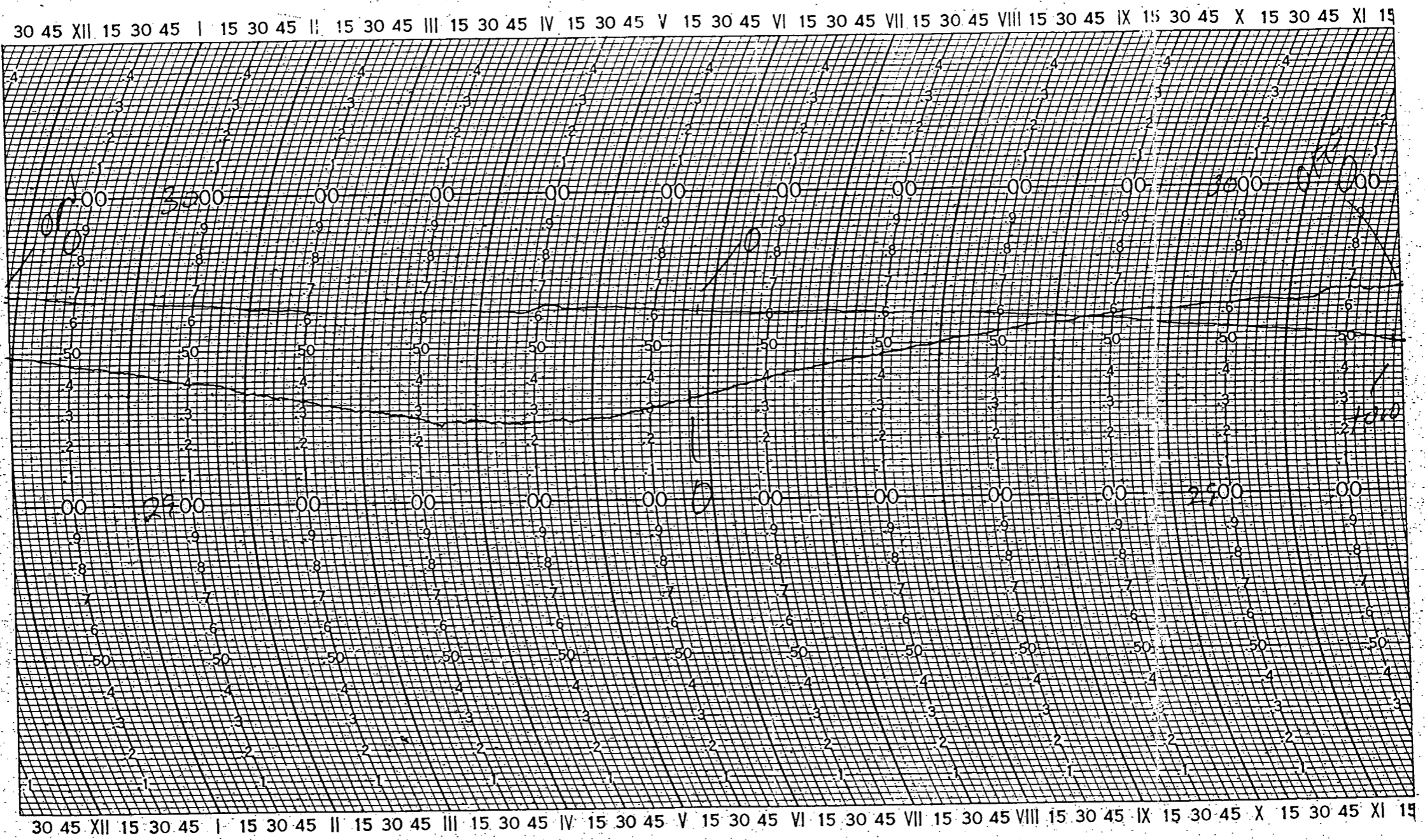
221.3

SEP 1 1985

AM X TIME 1151C

ON PRESSURE 29.690 DATE AND PM () TIME 1151C

OFF PRESSURE 29.670 DATE AND PM () TIME 1153C SEP 2 1985

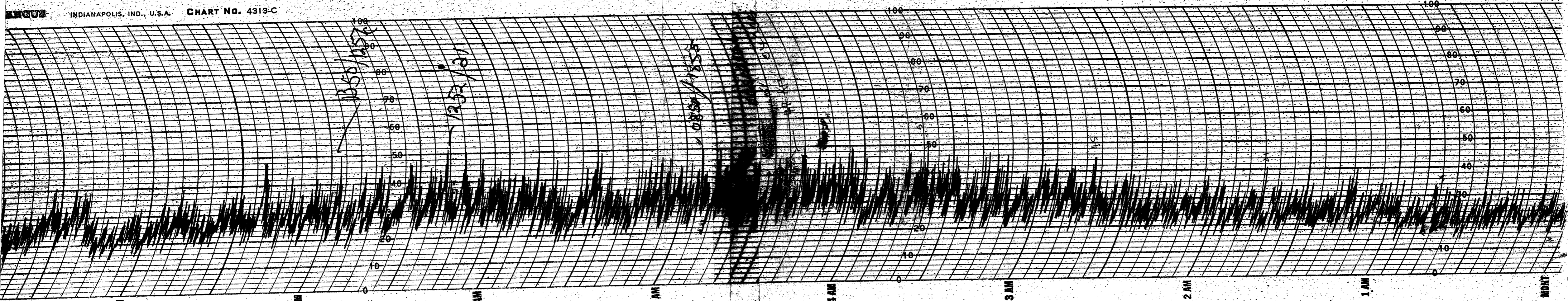


FOLD THIS MARGIN UNDER AND PLACE CLIP WITHIN FOLD

WSO Mobile, AL Bates Field
ELENA 9-2-85

MADE IN U.S.A. ESTERLINE ANGUS INDIANAPOLIS, IND., U.S.A.

ANGUS INDIANAPOLIS, IND., U.S.A. CHART No. 4313-C



(Times are CST)

WS FORM 455-17

FORMERLY 1068D (REV. 4-72) PEN ARM IS 7.625 INCHES LONG. AXIS IS 3.375 INCHES ABOVE CLOCK FLANGE

U.S. DEPARTMENT OF COMMERCE - NOAA NATIONAL WEATHER SERVICE

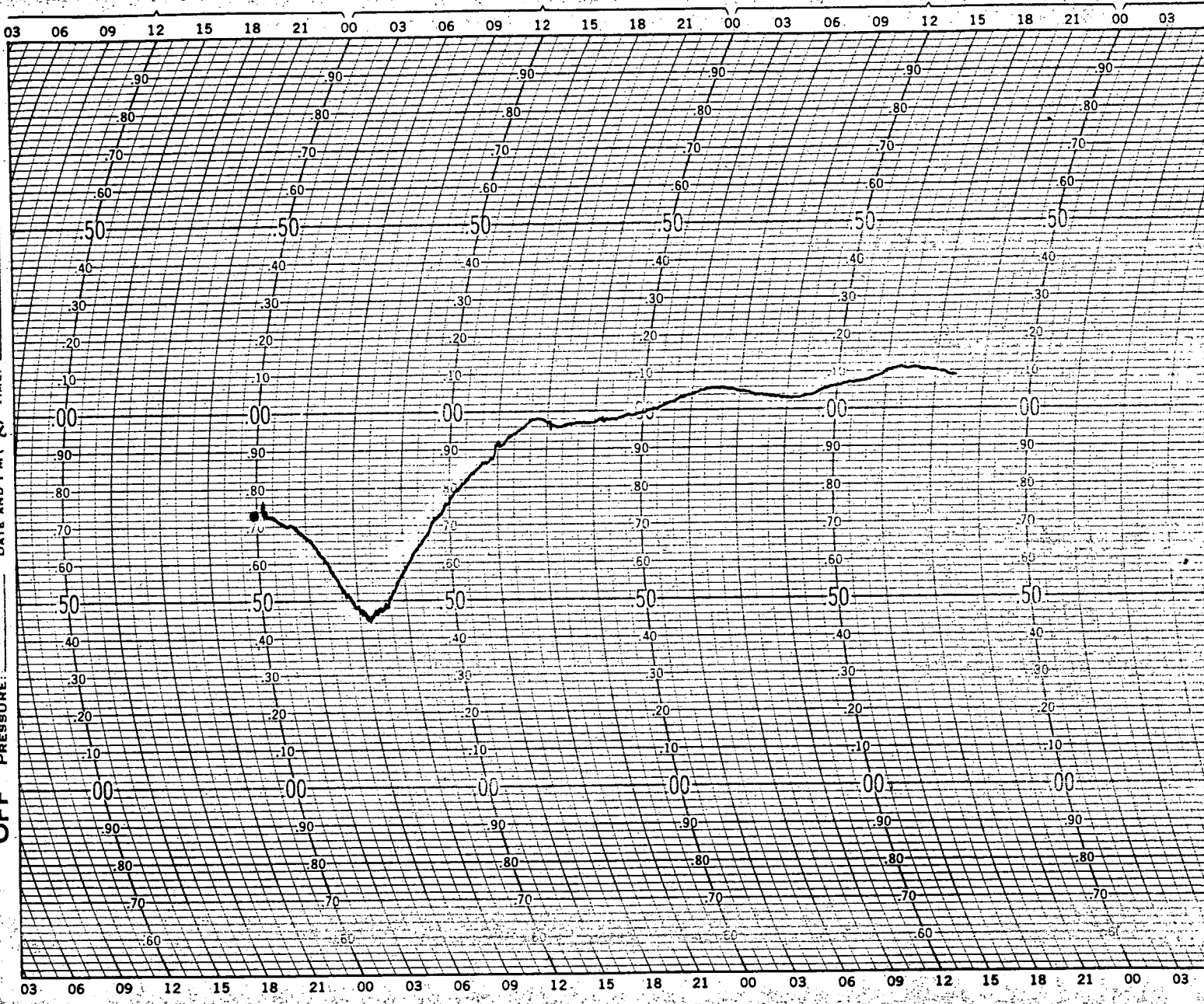
BAROGRAM

STATION PRESSURE (in inches) AT WSo Pensacola

TIME OF RECORD _____ TH MERIDIAN. ELEVATION (H_p) _____

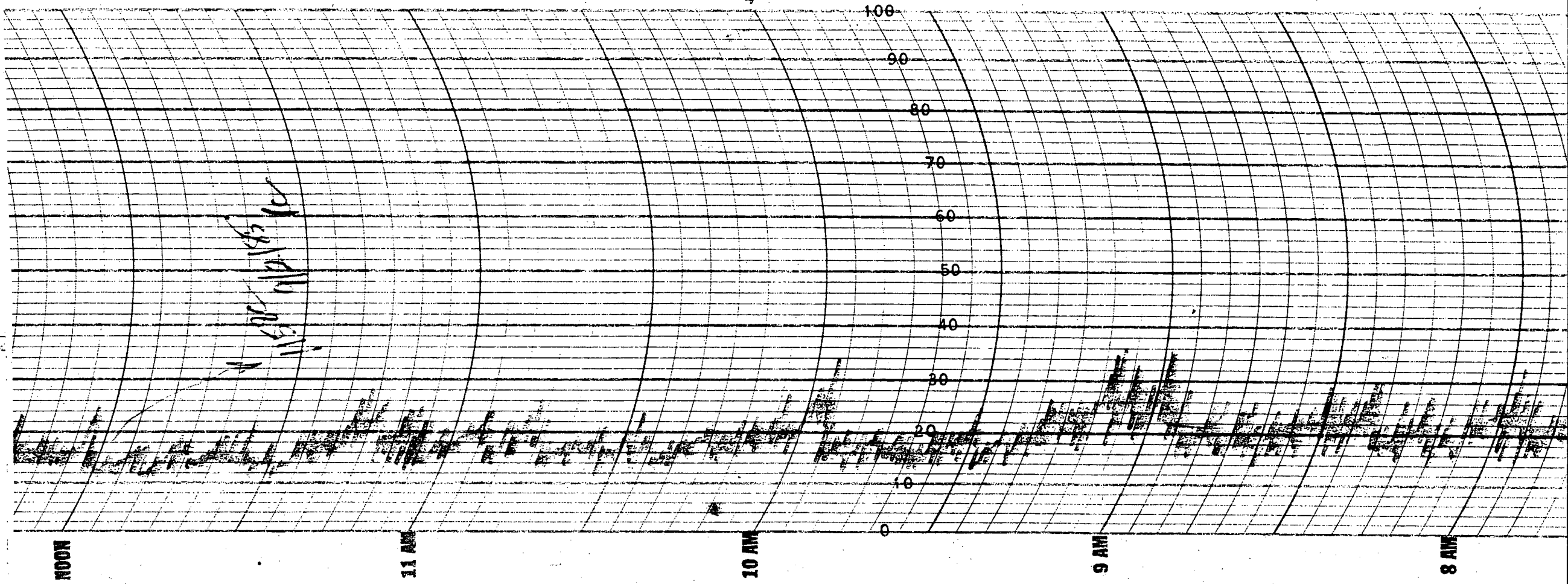
ON PRESSURE: _____ DATE AND PM (X) TIME: 1814 C. Sep 1, 1985

OFF PRESSURE: _____ DATE AND PM (X) TIME: 221 C. Sep 3, 1985



ESTERLINE ANGUS

INDIANAPOLIS, IND., U.S.A.



REPRODUCED AT GOVERNMENT EXPENSE

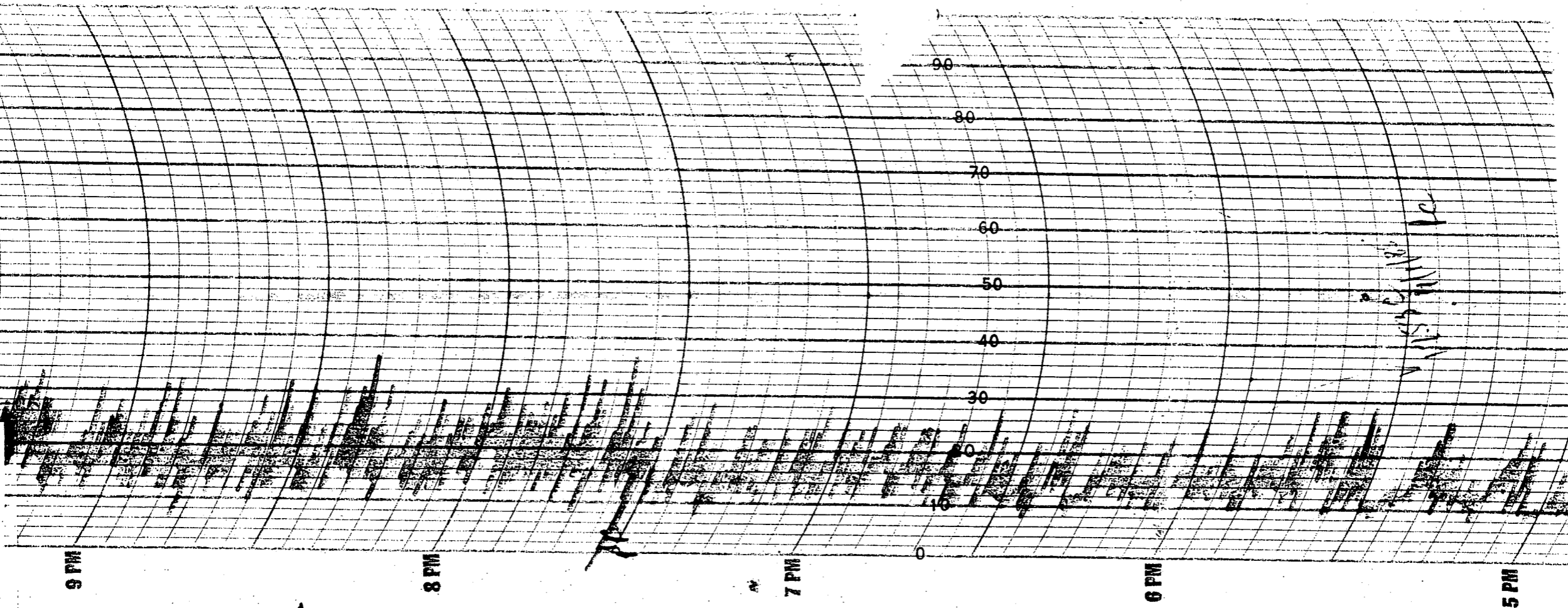
PNS

FAA Facilities maintenance indicated that the error in this equipment was approximately 10%

ESTERLINE ANGUS

INDIANAPOLIS, IND., U.S.A.

CHART NO. 4313-C



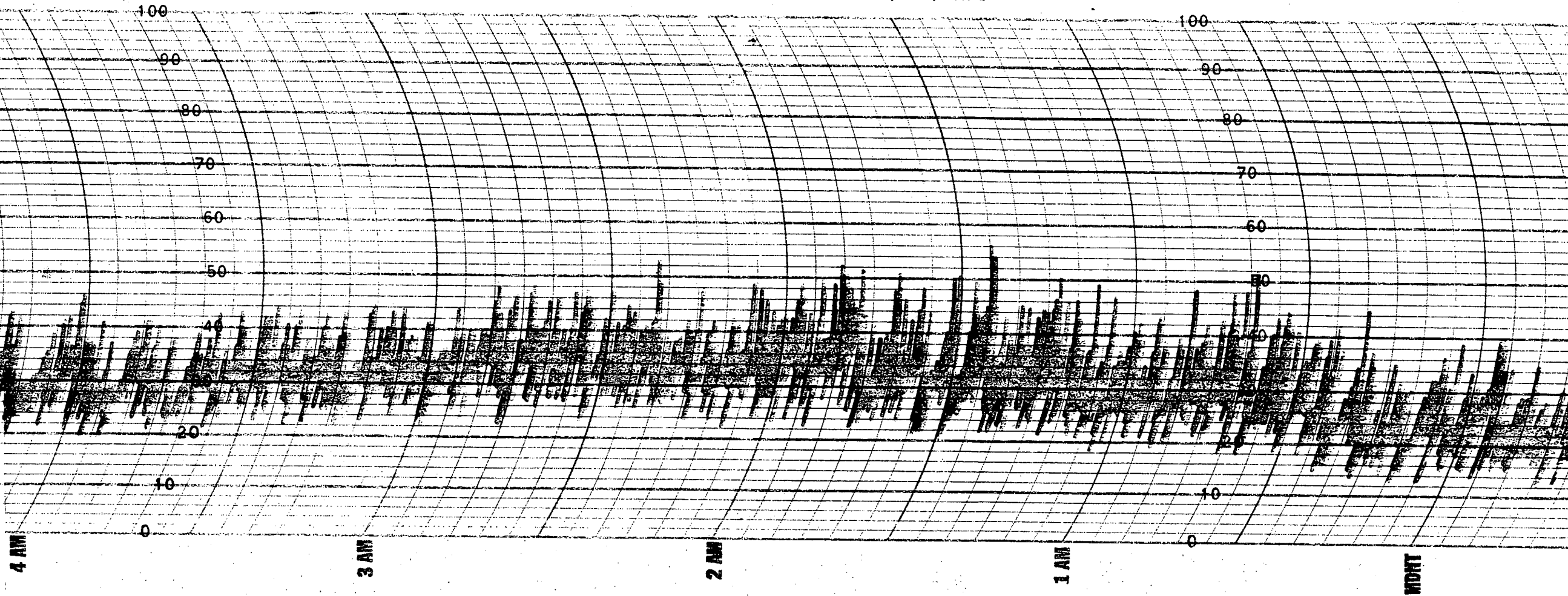
REPRODUCED AT GOVERNMENT EXPENSE

MADE IN U.S.A.

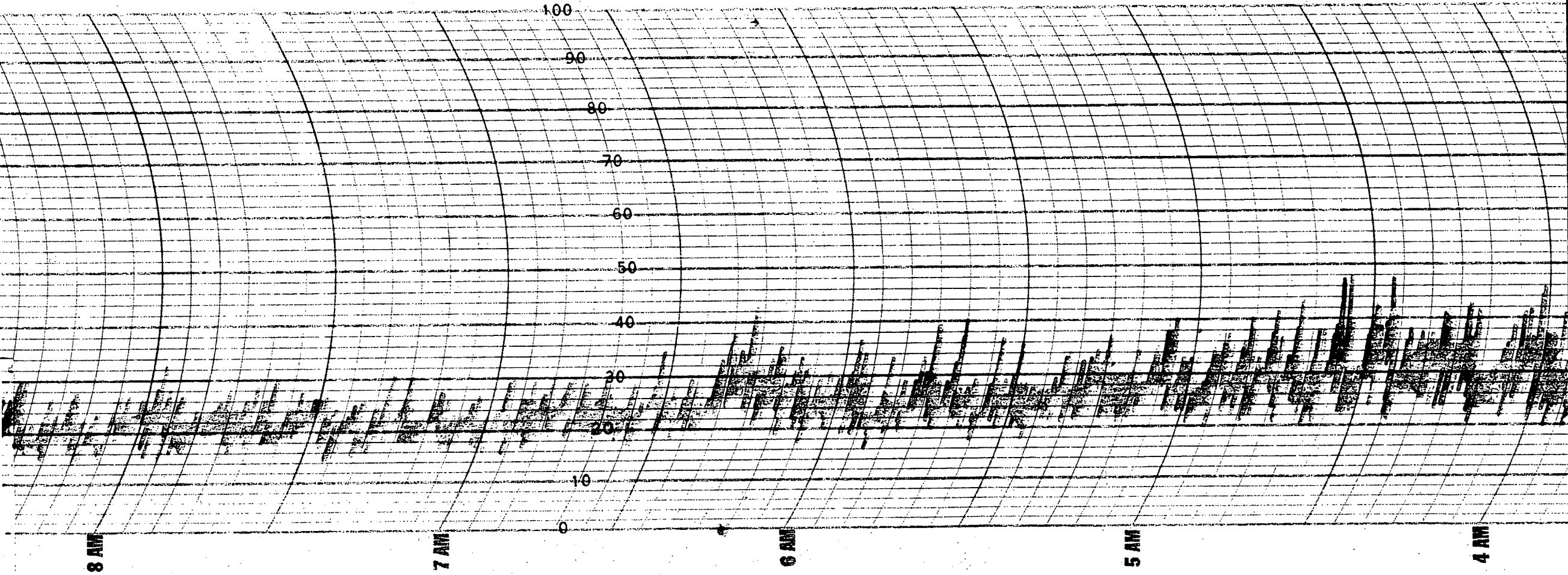
ESTERLINE ANGUS

INDIANAPOLIS, IND., U.S.A.

REPRODUCED AT GOVERNMENT EXPENSE



INDIANAPOLIS, IND., U.S.A. CHART NO. 4313-C



REPRODUCED AT GOVERNMENT EXPENSE