

##A

NEWLSRLCH

TTAA00 KLCH 151830

SEVERE STORM REPORT

NATIONAL WEATHER SERVICE LAKE CHARLES LA
122PM CDT THU AUG 15 1985

TORNADO TOUCHDOWN JUST SOUTH OF HACKBERRY LOUISIANA IN CAMERON PARISH IN SOUTHWEST LOUISIANA AT 1245 PM CDT. REPORTED BY MR GARY GRANT. A LOT OF DEBRIS REPORTED. NO KNON DEATHS AS MOST PEOPLE WERE EVACUATED OR GONE. HACKBERRY IS LOCATED 10 MILES SOUTHWEST OF WSO LAKE CHARLES. ANOTHER REPORT WAS JUST RECEIVED AND APPARENTLY THE TOUCHDOWN WAS IN A LARGE FIELD AND TORE UP EVERYTHING IN ITS WAY BEFORE WITHDRAWING BACK INTO CLOUDS.

NNNN

RCV20278

23:03 08/15/85

##A

NEWSRNEW

TTAA00 KNEW 151039

DELAYED STORM REPORT

NATIONAL WEATHER SERVICE NEW ORLEANS LOUISIANA

540 AM CDT THU AUG 15 1985

JEFFERSON PARISH...

THE GRAND ISLE LOUISIANA POLICE DEPARTMENT REPORTED THAT TWO TORNADOES OCCURRED THERE AT AROUND 340 AM CDT. THE ROOF WAS BLOWN OFF A CEMENT BUILDING. AND AN APARTMENT BUILDING ALSO WAS UNROOFED. THE POWER WAS KNOCKED OFF BY THE TORNADOES AND THE AREA IS STILL 80 PERCENT WITHOUT ELECTRICITY.

NNNN

STORM DATA AND UNUSUAL WEATHER PHENOMENA

STATE TEXAS, Southern

MONTH AND YEAR AUGUST, 1985

PLACE	DATE	TIME	LENGTH OF PATH (MILES)	WIDTH OF PATH (YARDS)	NO. OF PERSONS		ESTIMATED [†] DAMAGE		CHARACTER OF STORM
					KILLED	INJURED	PROPERTY	CROPS	
Fort Bend, Harris Counties	20	1750-1840			0	1	0	0	Lightning, Wind
Thunderstorm winds gusting to near 70 MPH were reported in the western part of Harris County near Katy. Also high winds were reported in the western part of Fort Bend County. Damage not reported. Lightning struck and injured a man while he was jogging.									
Matagorda County	25	1550			0	0	4	0	Wind
Thunderstorm winds did heavy damage to a trailer park in Wadsworth which is located 10 miles south of Bay City. Several trailers were overturned. There was some roof damage to homes and commercial buildings in the area. Tree limbs in the area were also downed.									

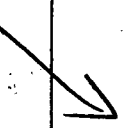
STOP BETWEEN COLUMNS 5 AND 6

DANNY
FOLDER

STORM DATA AND UNUSUAL WEATHER PHENOMENA

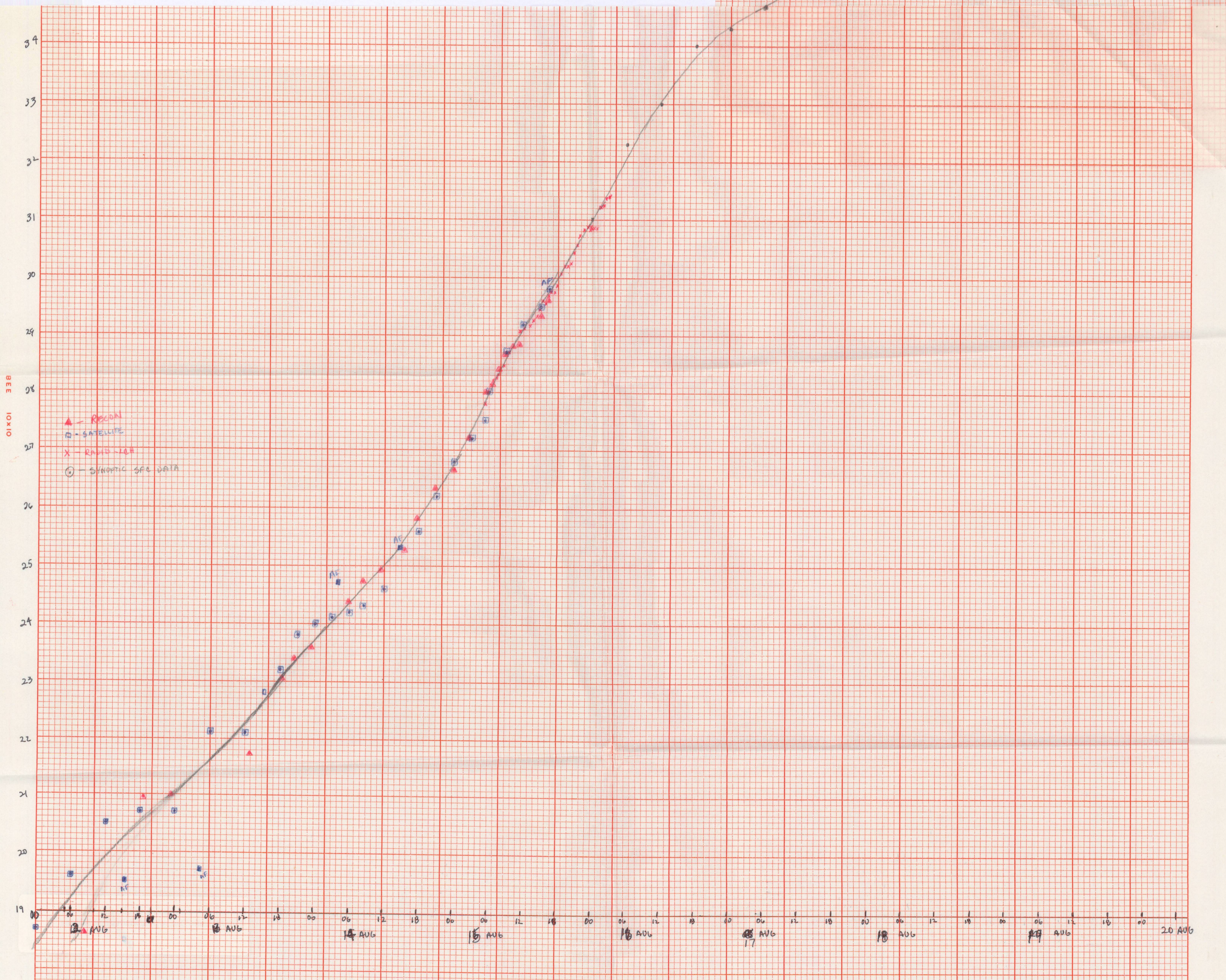
STATE TEXAS, Southern MONTH AND YEAR AUGUST, 1985

PLACE	DATE	TIME	LENGTH OF PATH (MILES)	WIDTH OF PATH (YARDS)	NO. OF PERSONS		ESTIMATED† DAMAGE		CHARACTER OF STORM
					KILLED	INJURED	PROPERTY	CROPS	
TEXAS, Southern									
Hardin, Tyler Counties	2	1730CST			0	0	0	0	Hail, Wind
			3/4 inch hail and winds estimated at 65-70 MPH were reported by a cooperative observer on the Hardin-Tyler County line. Damage not reported.						
Jefferson County	2	1745CST			0	0	0	0	Hail, Wind
			3/4 inch hail was reported by an off duty NWS employee 5 miles west of Port Acres on Hwy 73. Winds were also estimated between 60-65 MPH. Damage was not reported.						
Chambers County	3	1840CST			0	0	0	0	Wind
			High winds from a thunderstorm was reported by the sheriffs department near Lake Anahuac. WSO at Galveston reported a wind gust to 52 MPH at 1920 CST. Damage was not reported.						
Southeast Texas	15	Morning			0	0	0	0	Outer fringe of Hurricane Danny
			Hurricane "Danny" skirted southeast Texas and made landfall 55 miles southeast of Lake Charles La near Pecan Island. The storm had a very minimal effect on Southeast Texas and the upper Texas Coast. Highest winds at Beaumont was a peak gust to 39 MPH at 1313CST. Galveston peak gust was to 30 MPH from the northwest at 1441CST. Tides were generally 2-3 feet with very little beach erosion. State highway 87 from Sabine Pass to High Island was closed for a short time because of debris and sand that washed upon the roadway from the high tides. Bon Weir, in extreme eastern Newton county reported the heaviest rainfall in the area with 1.85 inches. Beaumont had only .07 while not a drop fell at Galveston.						
			About 2,000 persons evacuated the west end of Galveston Island. Several hundred persons voluntarily left Bolivar Penisular. Evacuation was requested for Sabine Pass and several hundred persons fled.						



20
15
10
5
0

STOP BETWEEN LINES 5 AND 6



01x01
BEE
10x10

