



Drought Information Statement for Southeast TX and Southwest LA

Valid October 17, 2024

Issued By: WFO Lake Charles, LA

Contact Information:

- This product will be updated October 24, 2024 or sooner if drought conditions change significantly.
- Please see all currently available products at <https://drought.gov/drought-information-statements>.
- Please visit <https://www.weather.gov/LCH/DroughtInformationStatement> for previous statements.
- Please visit <https://www.drought.gov/drought-status-updates/> for regional drought status updates.

Severe drought has evolved across portions of SW Louisiana and SE Texas



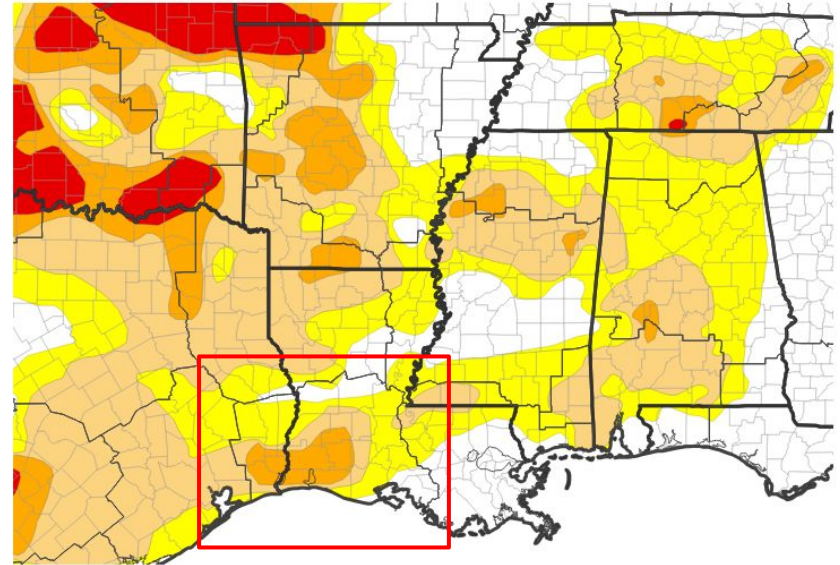


U.S. Drought Monitor

Link to the [latest U.S. Drought Monitor](#)

- Drought Intensity and Extent
 - **D2 (Severe Drought)**: Portions of Allen, Acadia, Jefferson Davis, Cameron, Calcasieu, and Beauregard Parishes. Portions of Newton, Jasper, Hardin, Orange, and Jefferson Counties.
 - **D1 (Moderate Drought)**: Portions of St. Landry, Evangeline, Rapides, Vernon, Acadia, Allen, Beauregard, Vermillion, Cameron, and Calcasieu Parishes. Portions of Newton, Jasper, Hardin, and Jefferson Counties.
 - **D0: (Abnormally Dry)**: Portions of Avoyelles, Rapides, Vernon, Beauregard, Evangeline, St. Landry, Acadia, Vermillion, Lafayette, St. Martin, Iberia, and Cameron Parishes. Portions of Newton, Jasper, Tyler, Hardin, and Jefferson Counties.

U.S. Drought Monitor



U.S. Drought Monitor



Source(s): NDMC, NOAA, USDA; image courtesy of Drought.gov

Data Valid: 10/15/24



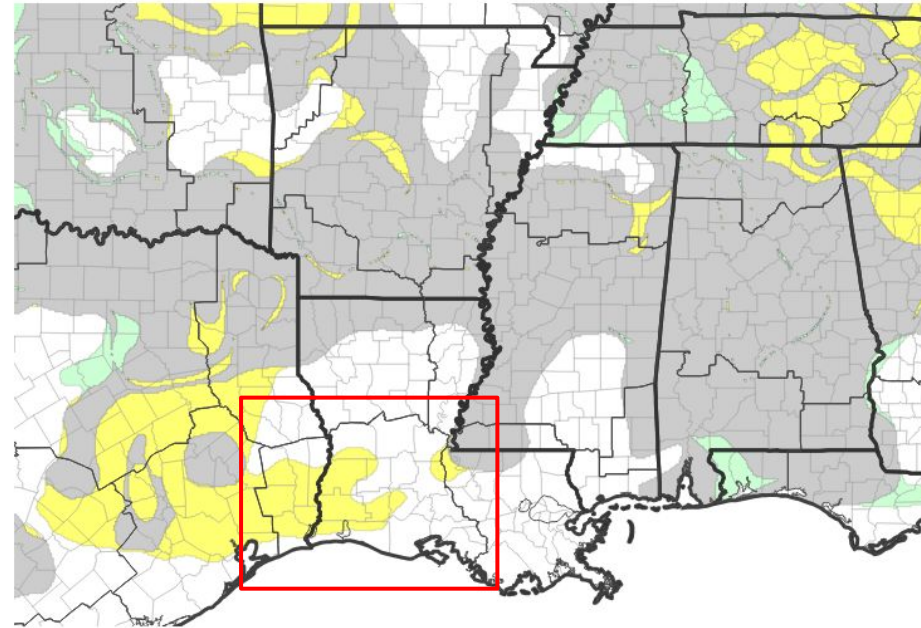


Recent Change in Drought Intensity

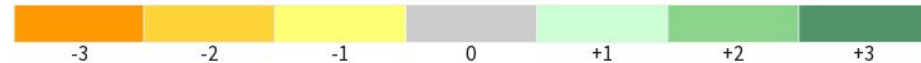
Link to the latest [1-week change map](#)

- One Week Drought Monitor Class Change.
 - Drought Worsened: Portions of Vernon, Beauregard, Calcasieu, Cameron, Jefferson Davis, Acadia, Avoyelles, and St. Landry Parishes. Orange, Hardin, and portions of Tyler, Newton, Jasper, and Jefferson Counties.
 - No Change: St. Mary, Iberia, St. Martin, Vermillion, Lafayette, Rapides, Evangeline, and portions of St Landry, Acadia, Jefferson Davis, Allen, and Vernon Parishes. Portions of Jefferson, Tyler, Newton, and Jasper Counties.

U.S. Drought Monitor 1-Week Change Map



Drought Change Since Last Week



Source(s): NDMC, NOAA, USDA; image courtesy of Drought.gov

Data Valid: 09/24/24



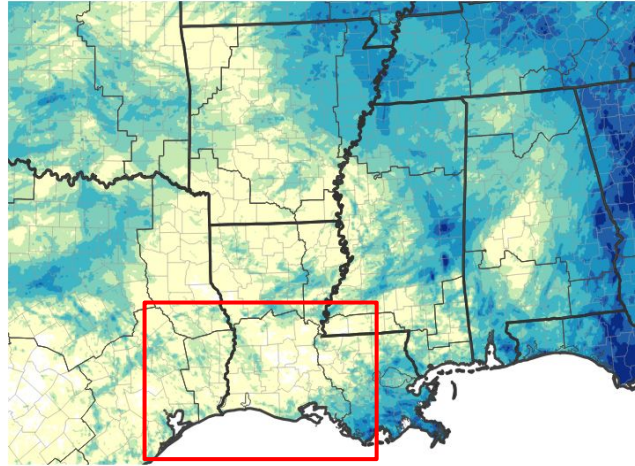


Precipitation

For the past 30 days

- Roughly 0.01 to 1.5 inches of rain has fallen over southwest Louisiana and southeast Texas over the past 30 days.
- These amounts are roughly 0-25 percent of normal (with isolated areas receiving closer to 25-50 percent of normal). Therefore, the entire region has seen below normal precipitation over the last 30 days.

30-Day Precipitation Accumulations (Inches)

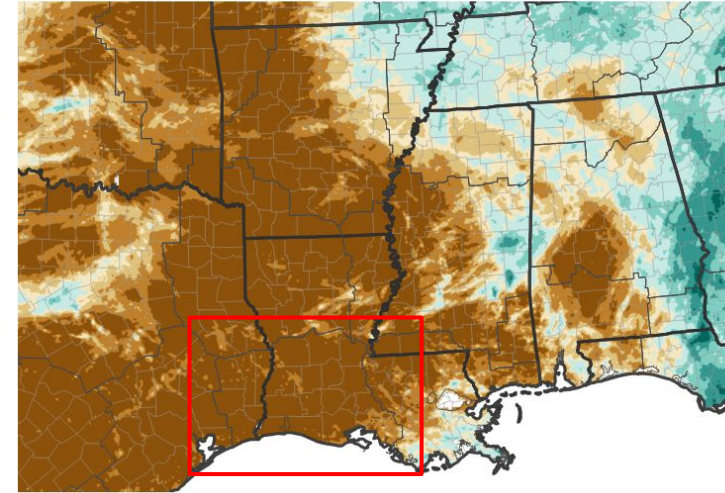


Inches of Precipitation

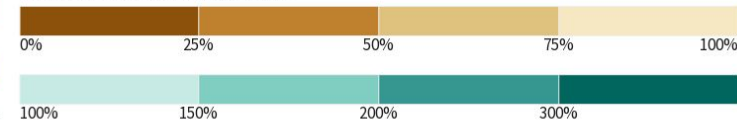


Source(s): National Weather Service Multi-Radar Multi-Sensor System; image courtesy of Drought.gov Last Updated: 10/17/24

30-Day Percent of Normal Precipitation



Percent of Normal Precipitation (%)



Source(s): National Weather Service Multi-Radar Multi-Sensor System; image courtesy of Drought.gov Last Updated: 10/16/24





Summary of Impacts

Links: See/submit [Condition Monitoring Observer Reports \(CMOR\)](#) and view the [Drought Impacts Reporter](#)

Hydrologic Impacts

- There are no known impacts at this time

Agricultural Impacts

- There are no known impacts at this time

Fire Hazard Impacts

- Burn bans are in place for Vernon, Rapides, Allen, Evangeline, St. Landry, Acadia, Jefferson Davis, and Calcasieu Parishes, as well as Newton, Jasper, Tyler, Hardin, Orange, and Jefferson Counties.

Mitigation Actions

- Please refer to your municipality and/or water provider for mitigation information.



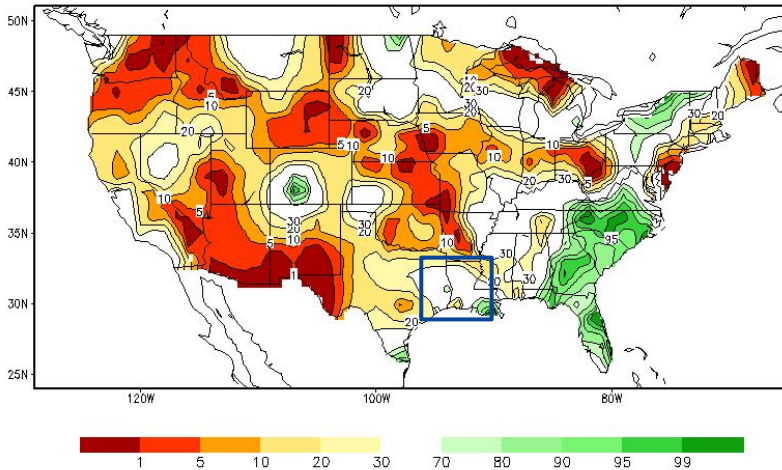


Agricultural Impacts

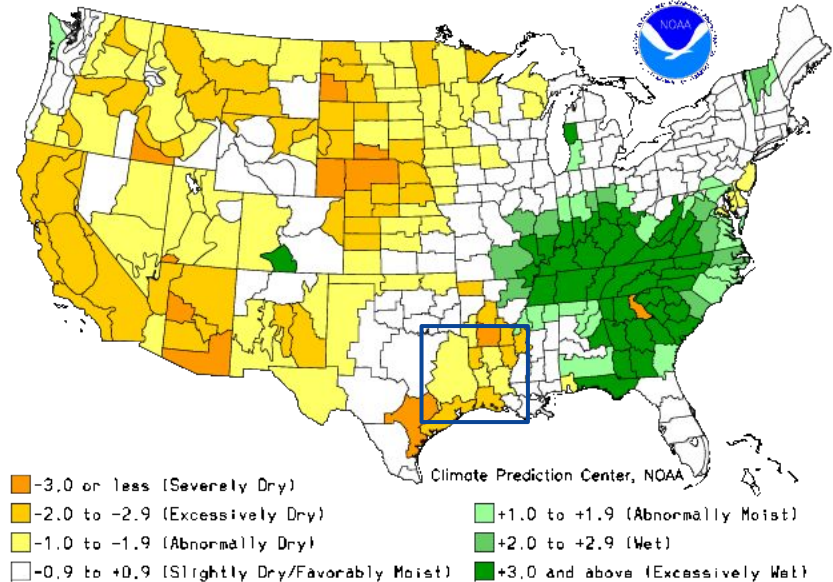
Soil Moisture and Drought Severity Index by Ag Division

- Soil moisture is largely near normal across the area, apart from a couple of isolated spots. However, the Crop Moisture Index is Excessively to Abnormally Dry for much of the region (excluding lower Acadiana)

Calculated Soil Moisture Ranking Percentile
OCT 16, 2024



Crop Moisture Index by Division
Weekly Value for Period Ending OCT 12, 2024
Short Term Need vs. Available Water in a Shallow Soil Profile



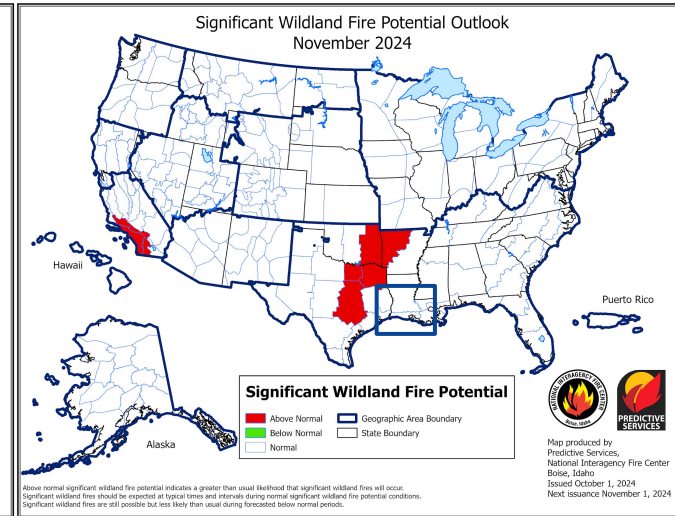
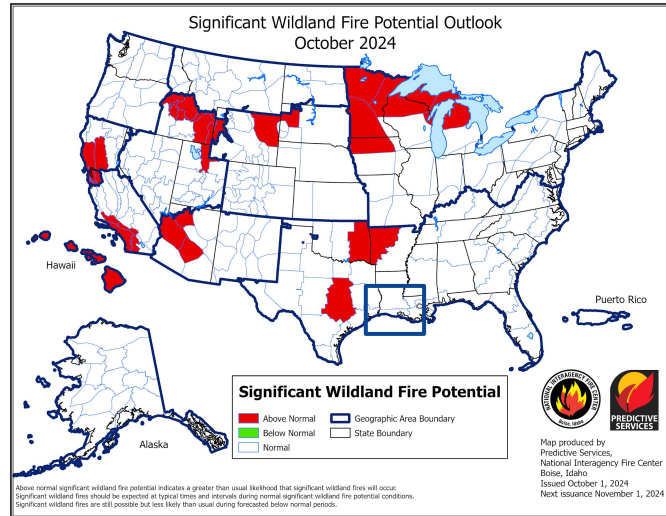


Fire Hazard Impacts

Link to [Wildfire Potential Outlooks from the National Interagency Coordination Center.](#)

Latest TX Burn Ban map available [here.](#)

Latest LA Burn Ban map available [here.](#)

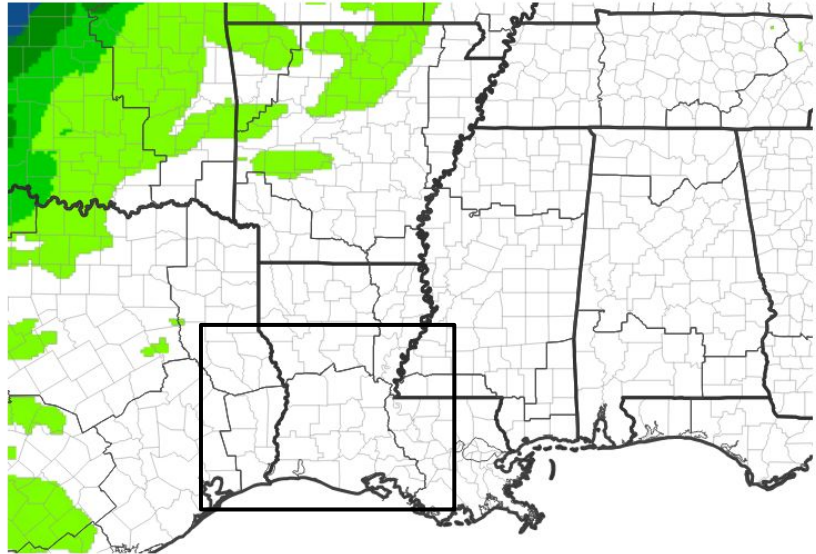




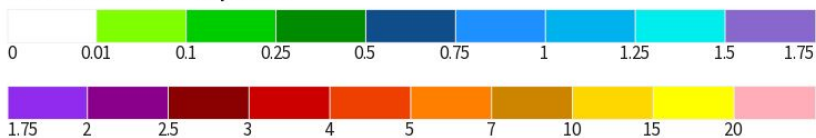
Seven Day Precipitation Forecast

- Dry weather is expected to persist across the entire region through at least the next week, with no rainfall anticipated. Therefore, no improvement in the drought conditions are expected.

7-Day Quantitative Precipitation Forecast for October 16, 2024–October 23, 2024



Predicted Inches of Precipitation



Source(s): National Weather Service Weather Prediction Center; image courtesy of Drought.gov Last Updated: 10/16/24



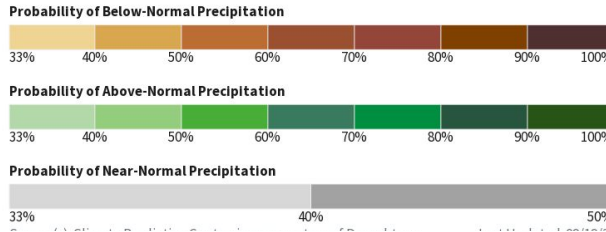
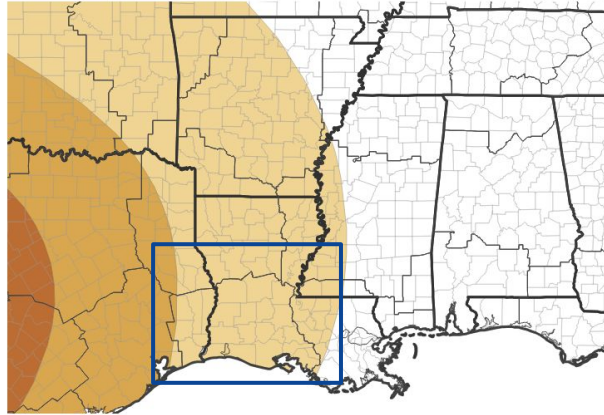


Long-Range Outlooks

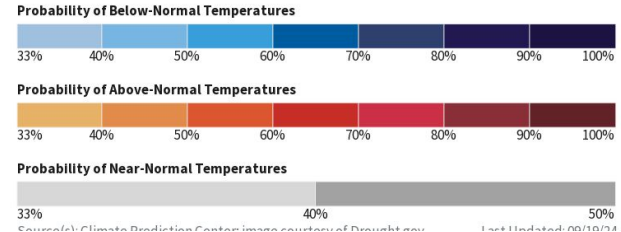
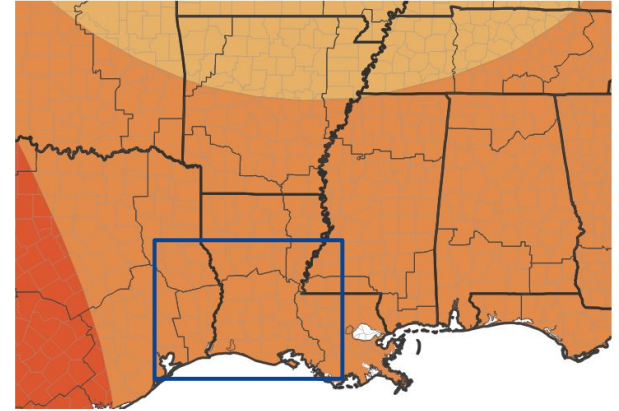
The latest monthly and seasonal outlooks can be found on the [CPC homepage](#)

- There is roughly a 30-40% chance that the trend of below normal precipitation will continue through the end of the year for the entire region.
- There is a 40-50% chance of above normal temperatures continuing across the entire region through the end of the year.

Seasonal (3-Month) Precipitation Outlook for October 1, 2024–December 31, 2024



Seasonal (3-Month) Temperature Outlook for October 1, 2024–December 31, 2024



Source(s): Climate Prediction Center (map courtesy of Drought.gov) Last Updated: 09/19/24



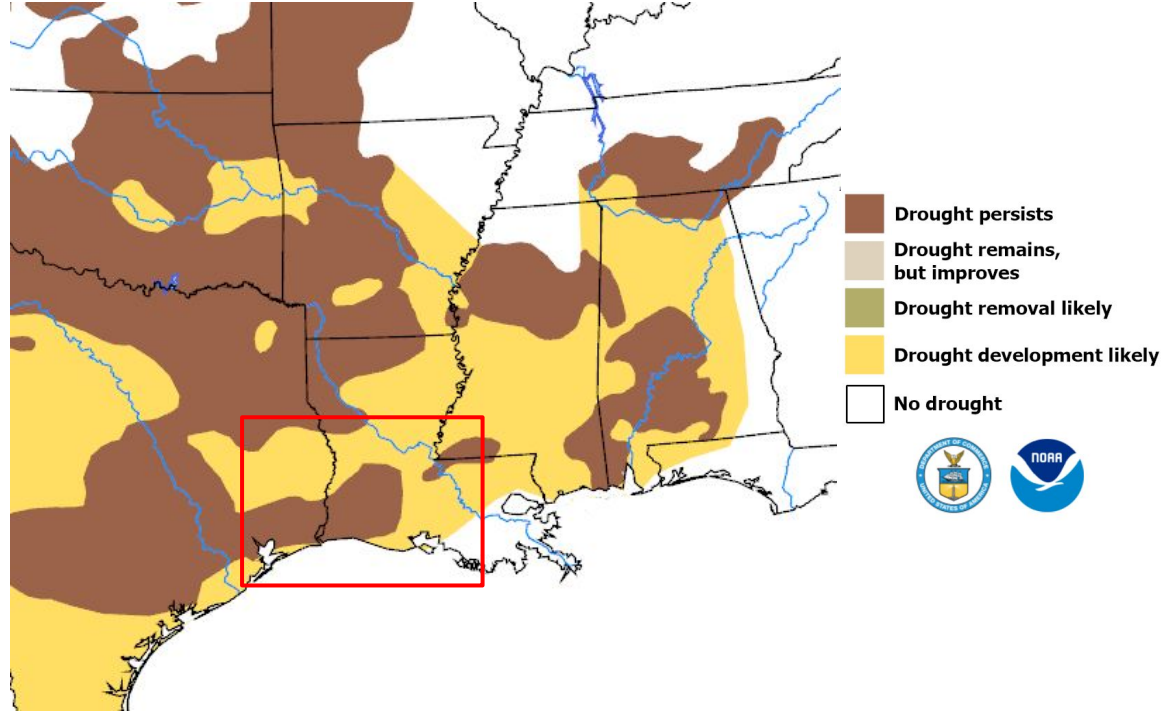


Drought Outlook

The latest monthly and seasonal outlooks can be found on the [CPC homepage](#)

- Drought conditions are expected to persist across lower SE TX and SW LA through the next 3 months.
- Drought conditions are expected to develop across the remainder of the region over the next 3 months.

Valid for October 17, 2024 - January 31, 2025
Released October 17, 2024



Links to the latest:

- [Climate Prediction Center Monthly Drought Outlook](#)
- [Climate Prediction Center Seasonal Drought Outlook](#)