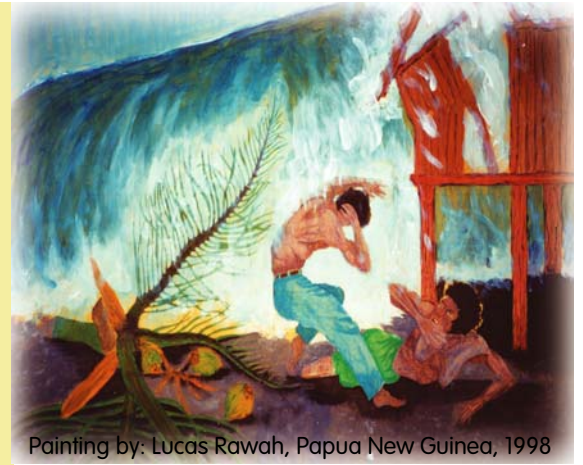


O LE A LE MEA E TATAU ONA FAI?

FAAILO MO GALU LOLO



Painting by: Lucas Rawah, Papua New Guinea, 1998

E iloagofie le aga'i mai o galu lolo, pe a tula'i mai lagona fa'alenua nei.

LAGONA

- **O mafui'e malolosi e mafua ai galu lolo.**
- **LAGONAINA** le lulu malosi o le laueleele.

VA'AI

- **E mou atu le sami i tai o le 'aau, ona iloa atu lea o le alititai ('amu, 'aau ma figota o le sami).**
- **VAAI** atu pe iloa le sami?

FA'ALOGO

- **Ua fa'alogoina le fafati leo tele o galu e pei o se afi o se va'alele.**
- **FA'ALOGO** atu i le malosi o galu lolo?

TAMO'E

- **Aua ne'i fa'atali mo fa'atonuga mai le malo o Amerika Samoa.**
- **Vave tula'i ese mai nofoaga maualalalo e tu lata i le sami.**
- **Aga'i atu i nofoaga mapu'epu'e pe mamao ese mai fo'i ma le sami.**
- **TAMO'E** pe a va'aia le galu lolo ua aga'i mai!

National Weather Service Office
Pago Pago Office, American Samoa
Telephone: (684) 699-9130

Pacific Tsunami Warning Center Website:
<http://www.tsunami.gov>



ASG Dept. of Homeland Security
Telephone: (684) 699-6481
(684) 699-3800
(684) 633-2827

UNESCO/IOC-NOAA International Tsunami Information Center
Telephone: (808) 725-6050 Email: itic.tsunami@noaa.gov
Website: <http://www.tsunamiwave.org/>



TSUNAMI