



# CARIBE WAVE 17

## 2<sup>nd</sup> Webinar

**Christa G. von Hillebrandt-Andrade**  
NOAA NWS Caribbean Tsunami Warning Program- Manager  
ICG CARIBE EWS Chair  
March 7, 2017

# Welcome!

## CARIBE WAVE 17 Webinar Series

- ✓ **17 January in English**
- ✓ **18 de enero en Español**
- ✓ **19 janvier à Français**
- ✓ **7 March in English**
  - 8 de marzo en Español**
  - 9 mars à Français**

# Objectives

- 1. To exercise and evaluate operations of the CARIBE EWS Tsunami Warning System.**
  - A. Validate the issuance of tsunami products from the PTWC.**
  - B. Validate the receipt of tsunami products by CARIBE EWS Tsunami Warning Focal Points (TWFPs) and/or National Tsunami Warning Centers NTWCs).**
- 2. To evaluate the use of PTWC CARIBE EWS products.**
- 3. To validate the readiness to respond to a tsunami.**
  - A. Validate the operational readiness of the TWFPs/ NTWCs and/or the National Disaster Management Office (NDMO).**
  - B. To improve operational readiness. Before the exercise, ensure appropriate tools and response plan(s) have been developed, including public education materials.**
  - C. Validate that the dissemination of warnings and information/advice by TWFPs, and NTWCs, to relevant in-country agencies and the public is accurate and timely.**
  - D. Validate the organizational decision-making process (tsunami response plans) about public warnings and evacuations.**
  - E. Validate that the methods used to notify and instruct the public are accurate and timely.**
  - F. Evaluate the status of the implementation of the Tsunami Ready recognition program.**

# Goals/ Metrics

Goal	2013 Result	2014 Metric	2014 Result	2015 Metric	2015 Result	2016 Metric	2016 Result	2017 Metric
<b>Participation of Member States of ICG CARIBE EWS with designated focal warning point</b>	94%	95%	98% (including two MS/Territory unofficial)	95%	100%	100%	100%	100%
<b>Compliance with the timeline</b>	Close to 100%	100%	Almost 100%	100%	Almost 100%	100%	Almost 100%	100%
<b>Community involvement (beyond TWFP)</b>	75%	75%	75%	80%	66%	85%	73%	90%
<b>Number of participants</b>	44,000	+10%	191,000	+10%	191,420	+10%	332,814	+10%
<b>TWFP receive the dummy message</b>	98%	100%	94%	100%	90%	100%	84%	100%
<b>Countries who participate submit exercise questionnaire</b>	90%	100%	100%	100%	91%	100%	100%	100%

# The exercise manuals are available at: [www.caribewave.info](http://www.caribewave.info)



## NATIONAL WEATHER SERVICE

NATIONAL OCEANIC AND ATMOSPHERIC ADMINISTRATION

HOME FORECAST PAST WEATHER SAFETY INFORMATION EDUCATION NEWS SEARCH ABOUT

Local forecast by "City, St" or ZIP code  
   
[Location Help](#)

### Windy and Cooler in the East; Return to Wet Weather in the West

A frontal boundary pushing off the east coast is allowing cooler air to rush into the eastern U.S.. Strong and gusty winds will weaken into Friday. Temperatures will lower to below normal on Friday with some snow reaching south into the DC Beltway area. A new wet weather pattern from the Gulf of Alaska will bring rain, then low elevation snow levels and heavy mountain snow to the West Coast.

[Read More >](#)

## Caribbean Tsunami Warning Program

[Weather.gov > Caribbean Tsunami Warning Program](#)

Carib. Sea Level Stations Seismic Stations Communications Systems CARIBE EWS Preparedness/Education About CTWP

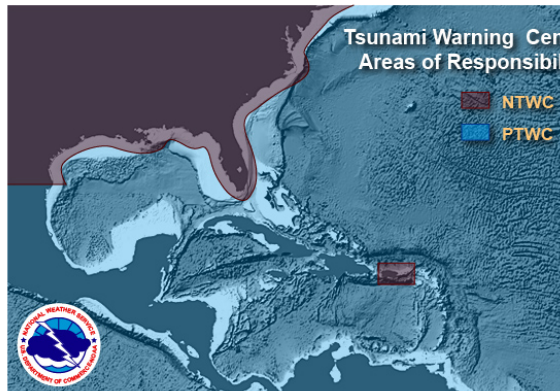

## CaribeWave 17

March 21 2017

[Click here for documentation and registration](#)

The Caribbean Tsunami Warning Program (CTWP) supports domestic and international tsunami warning services and programs in the Caribbean and Adjacent Regions. The office focuses on strengthening and sustaining the tsunami observational system as well as the continued enhancement of tsunami outreach, education and readiness, including the implementation of the [TsunamiReady@](#) and international [Tsunami Ready](#) Programs.

Within NOAA it works closely with the [U.S. Tsunami Warning Centers](#) (National Tsunami Warning Center and Pacific Tsunami Warning Center), which are currently providing tsunami services to the Caribbean; the [International Tsunami Information Center](#); the NWS [San Juan Weather Forecast Office](#)

## NATIONAL WEATHER SERVICE

NATIONAL OCEANIC AND ATMOSPHERIC ADMINISTRATION

HOME FORECAST PAST WEATHER SAFETY INFORMATION EDUCATION NEWS SEARCH ABOUT

Local forecast by "City, St" or ZIP code  
   
[Location Help](#)

### Heavy Snow in the Pacific Northwest and Northern Rockies; High Fire Danger Continues in the Plains

Another round of heavy snow will occur in the mountains of Washington State and Oregon. Snow will spread east to the Interior Northwest Mountains and Northern Rockies. Blustery winds and blizzard conditions also continue in the northern Plains. Meanwhile in the central Plains, strong winds and low humidity will continue to produce elevated fire weather conditions.

[Read More >](#)

## CARIBE WAVE 17

[Weather.gov > Caribbean Tsunami Warning Program](#) - CARIBE WAVE 17

Caribbean Tsunami Warning Program  
National Program

Carib. Sea Level Stations Seismic Stations Communications Systems CARIBE EWS Preparedness/Education About CTWP

The Tsunami Exercise Caribe Wave 17 will have three scenarios: Santiago de Cuba, Costa-Rica and Northeastern Antilles. All scenarios will start with one dummy message, at 1400 UTC (time of the earthquake) and the 1st message for each of the three scenarios will be 5 minutes later (1405 UTC). It is important to remark that each Member State will select one scenario and that PTWC only will send simulated products for the selected scenario to the primary TWFP and NTWC of that Member State.

Read the [IOC Circular Letter No 2854 - CARIBE WAVE 2017](#)

Join CARIBE WAVE 17 by [Registering here](#)

Download the [Handbook](#)

Download the KMZ [Northeastern Antilles -- Costa Rica -- Cuba](#)

### FIRST WEBINAR SERIES

English - January 17, 2017 [Presentation](#) and [Recording](#)

Español - January 18, 2017 [Presentation](#) and [Recording](#)

Français - January 19, 2017 [Presentation](#) and [Recording](#)

### SECOND WEBINAR SERIES

English - March 7, 2017 [Register here](#)

Español - March 8, 2017 [Register here](#)

Français - March 9, 2017 [Register here](#)

Thanks and PLEASE contact me with any questions.  
[Christa G. von Hillebrandt-Andrade](#)  
 Manager

### CARIBE WAVE 17 Selected Scenarios

Scenario Selection Due Date: **March 10, 2017**

Costa Rica	Cuba	Northeastern Lesser Antilles
Colombia	Cayman Islands	France
Costa Rica	Cuba	Guadeloupe Saint-Barthélemy Martinique Saint-Martin
	Guatemala	United Kingdom
	Haiti	Anguilla British Virgin Islands
	Honduras	United States
	Kingdom of Netherlands	Puerto Rico U.S. Virgin Islands
	Aruba	Venezuela
	Saint Lucia	



# Tsunami Warning System Exercises

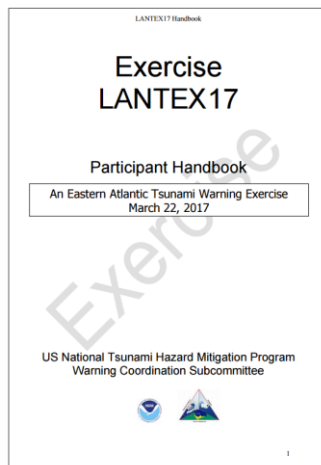
## LANTEX 17

### A Eastern Atlantic Tsunami Warning Exercise

Portugal Scenario

March 22, 2017

NTWC



## CARIBE WAVE 17

### A Caribbean and Adjacent Regions Tsunami Warning Exercise

Costa Rica, Cuba and Northeastern Lesser Antilles Scenarios

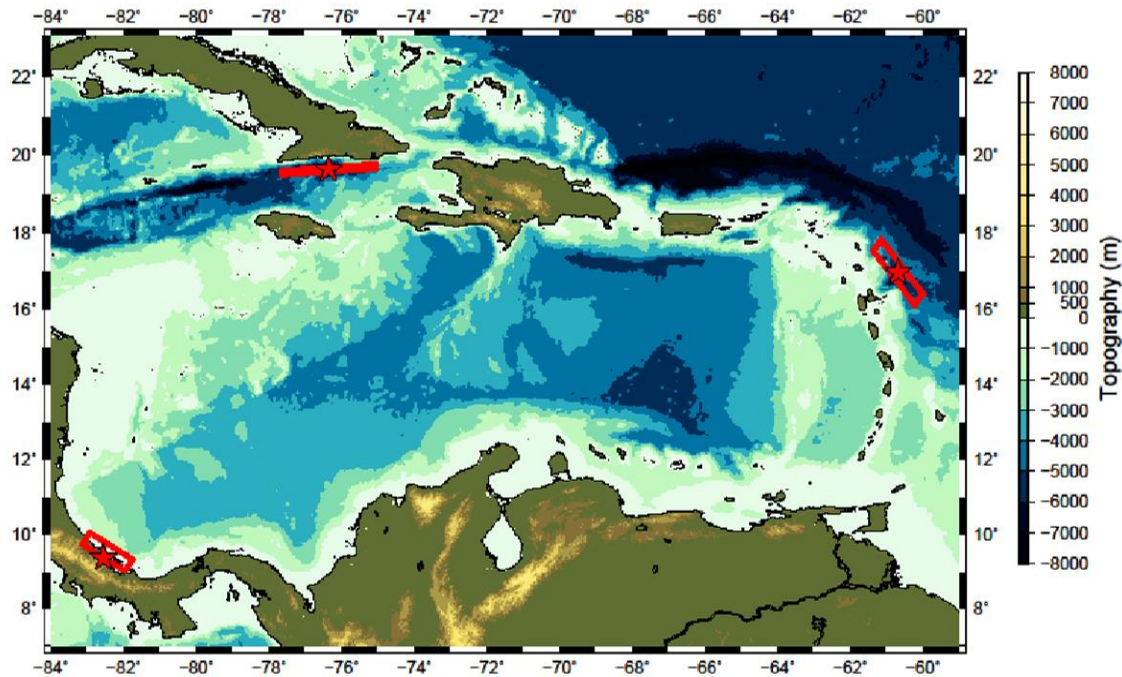
March 21, 2017

PTWC



# CARIBE WAVE 17

## Earthquake and Tsunami Scenarios



Scenario	Origin Time	Mw	Epicenter
Costa Rica	14:00:00 UTC March 21, 2017	7.9	9.37°, -82.54°
Cuba		8.2	19.625°, -76.35°
Northeastern Lesser Antilles		8.5	16.96°, -60.69°

# CARIBE WAVE 17

## Earthquake and Tsunami Scenarios

- The initial dummy message for the three scenarios will be issued by the CARIBE EWS Tsunami Service Provider [Pacific Tsunami Warning Center (PTWC)] on March 21, 2017 at 1400 UTC and disseminated over all its standard broadcast channels.
  - Each country and territory will choose one scenario and decide if and how to disseminate messages within its area of responsibility.
  - **By March 10, 2017**, each Member State needs to select one scenario and must inform its selection to PTWC ([charles.mccreery@noaa.gov](mailto:charles.mccreery@noaa.gov)) with a copy to the Caribbean Tsunami Warning Program ([carolina.hincapie@noaa.gov](mailto:carolina.hincapie@noaa.gov) and [cherrymar.reyes@noaa.gov](mailto:cherrymar.reyes@noaa.gov)). If the Member State does not inform the PTWC and CTWP, the organizers will decide for which scenario the PTWC will send the products.



# CARIBE WAVE 17 Selected Scenarios

Scenario Selection Due Date: **March 10, 2017**

Costa Rica	Cuba	Northeastern Lesser Antilles
Colombia	Cayman Islands	France
Costa Rica	Cuba	Guadeloupe      Saint-Barthélemy
	Guatemala	Martinique      Saint-Martin
	Haití	United Kingdom
	Honduras	Anguilla      British Virgin Islands
	Kingdom of Netherlands	United States
	Aruba	Puerto Rico      U.S. Virgin Islands
	Saint Lucia	Venezuela

## Appendix E. TWC Dummy (Start of Exercise) Messages

PTWC

Center

WECA41 PHEB 211400

WMO ID

TSUCAX

AWIPS ID

TEST...TSUNAMI EXERCISE MESSAGE NUMBER 1...TEST  
NWS PACIFIC TSUNAMI WARNING CENTER/NOAA/NWS  
ISSUED AT 1400Z 21 MAR 2017

...CARIBEWAVE 17 TSUNAMI EXERCISE MESSAGE. REFER TO PTWC MESSAGE 1 IN THE EXERCISE HANDBOOK. THIS IS AN EXERCISE ONLY...

THIS MESSAGE IS BEING USED TO START THE CARIBEWAVE 17 CARIBBEAN TSUNAMI EXERCISE. THIS WILL BE THE ONLY EXERCISE MESSAGE BROADCAST FROM THE PACIFIC TSUNAMI WARNING CENTER EXCLUDING SPECIAL EMAIL MESSAGES DISCUSSED IN THE HANDBOOK. THE HANDBOOK IS AVAILABLE AT THE WEB SITE CARIBEWAVE.INFO. THE EXERCISE PURPOSE IS TO PROVIDE EMERGENCY MANAGEMENT A REALISTIC SCENARIO TO TEST TSUNAMI RESPONSE PLANS.

THIS IS ONLY AN EXERCISE.

\$\$

# Start of Exercise messages will also be sent out by PTWC twitter accounts

Users with US Cellphone providers can receive Tweets as text messages, sending as body message:

“Follow NWS\_PTWC” to 40404 (this account is for all PTWC products)

“Follow NWS\_CTWP” to 40404 (this account is only for PTWC products for the Caribbean and Adjacent Regions)

“This is a test message for the CARIBEWAVE17 tsunami exercise #CaribeWave” (will be issued at 14h00 UTC to NWS\_PTWC and NWS\_CTWP accounts/subscribers).”

## Message Chronology issued by the PTWC for the Scenarios

# Costa Rica

## Message Chronology issued by the PTWC

Date	Time (UTC)	PTWC	
		Type of Product	Transmission Method
3/21/17	1400	-----Earthquake Occurs-----	
3/21/17	1400	Dummy	NWWS, GTS, EMWIN, AISR, Fax, Email
3/21/17	1405	Tsunami Threat Message #1	Email
3/21/17	1425	Tsunami Threat Message # 2 and Graphic Enhanced Product	Email
3/21/17	1525	Tsunami Threat Message #3	Email
3/21/17	1625	Tsunami Threat Message #4	Email
3/21/17	1725	Tsunami Threat Message #5	Email
3/21/17	1825	Tsunami Threat Message #6	Email
3/21/17	1925	Final Tsunami Threat Message #7	Email

# Cuba

## Message Chronology issued by the PTWC

Date	Time (UTC)	PTWC	
		Type of Product	Transmission Method
3/21/17	1400	----- Earthquake Occurs -----	
3/21/17	1400	Dummy	NWWS, GTS, EMWIN, AISR, Fax, Email
3/21/17	1405	Tsunami Threat Message #1	Email
3/21/17	1425	Tsunami Threat Message # 2 and Graphic Enhanced Product	Email
3/21/17	1525	Tsunami Threat Message #3	Email
3/21/17	1625	Tsunami Threat Message #4	Email
3/21/17	1725	Tsunami Threat Message #5	Email
3/21/17	1825	Tsunami Threat Message #6	Email
3/21/17	1925	Tsunami Threat Message #7	Email
3/21/17	2025	Tsunami Threat Message #8	Email
3/21/17	2125	Final Tsunami Threat Message #9	Email

# Northeastern Lesser Antilles

## Message Chronology issued by the PTWC

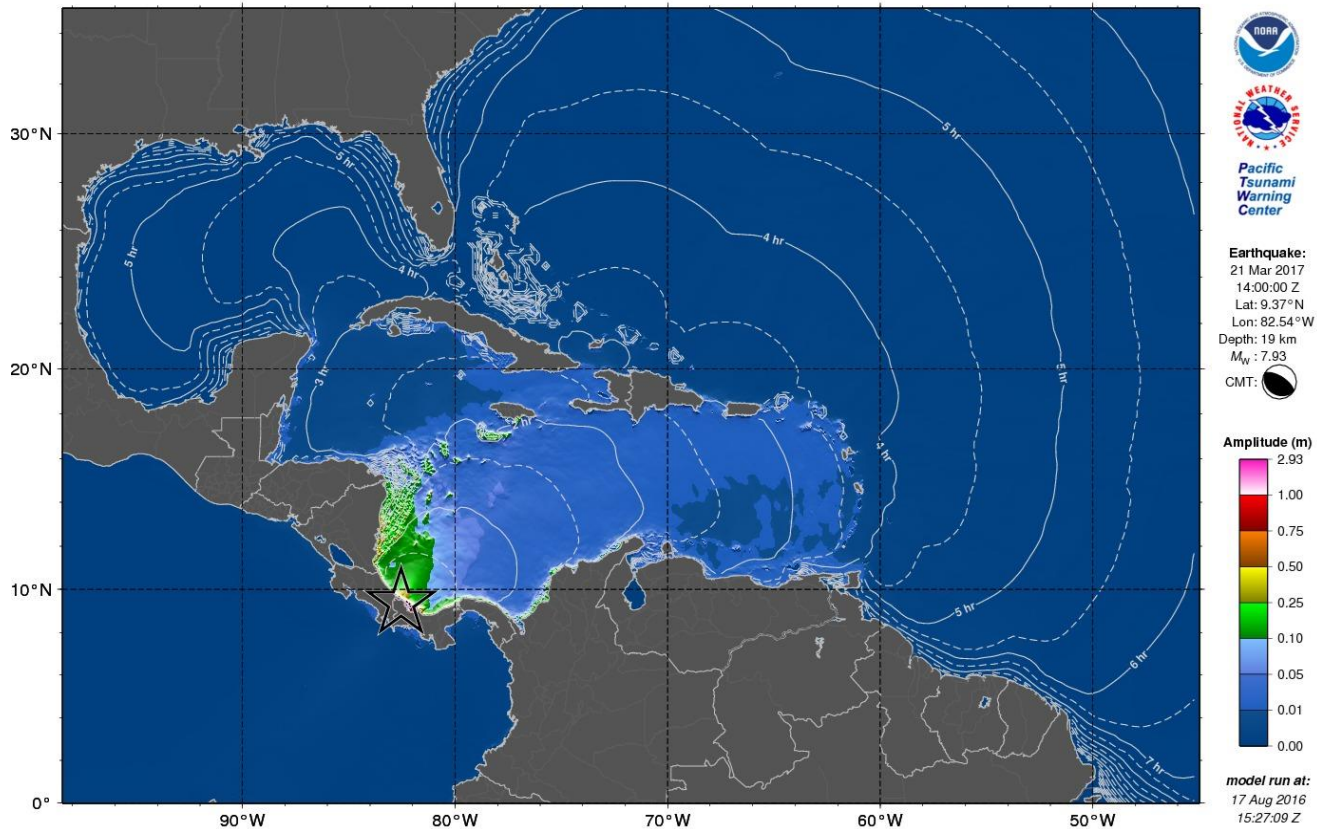
Date	Time (UTC)	PTWC	
		Type of Product	Transmission Method
3/21/17	1400	----- Earthquake Occurs -----	
3/21/17	1400	Dummy	NWWS, GTS, EMWIN, AISR, Fax, Email
3/21/17	1405	Tsunami Threat Message #1	Email
3/21/17	1425	Tsunami Threat Message # 2 and Graphic Enhanced Product	Email
3/21/17	1525	Tsunami Threat Message #3	Email
3/21/17	1625	Tsunami Threat Message #4	Email
3/21/17	1725	Tsunami Threat Message #5	Email
3/21/17	1825	Tsunami Threat Message #6	Email
3/21/17	1925	Tsunami Threat Message #7	Email
3/21/17	2025	Tsunami Threat Message #8	Email
3/21/17	2125	Final Tsunami Threat Message #9	Email

# Costa Rica Scenario



# Energy Forecast for Tsunami Wave Heights Costa Rica

PTWC Energy Forecast



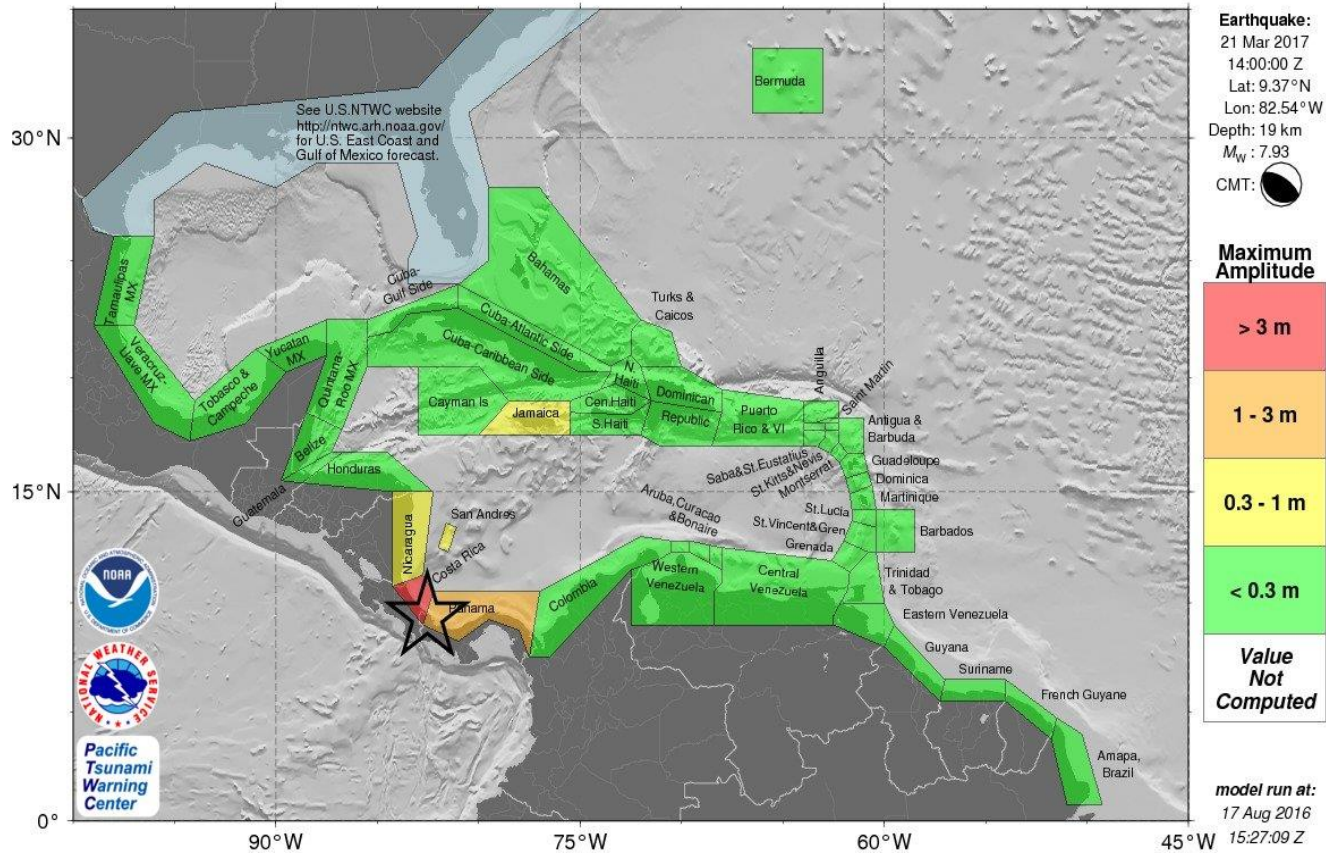
**RIFT maximum amplitude map for the Southern Caribbean Sea based on the scenario for Costa Rica.**

During a real event this product will only be made available to officially designated Tsunami Warning Focal Points and National Tsunami Warning Centers.

# Polygons Forecast for Tsunami Wave Heights

## Costa Rica

### PTWC Forecast Polygons



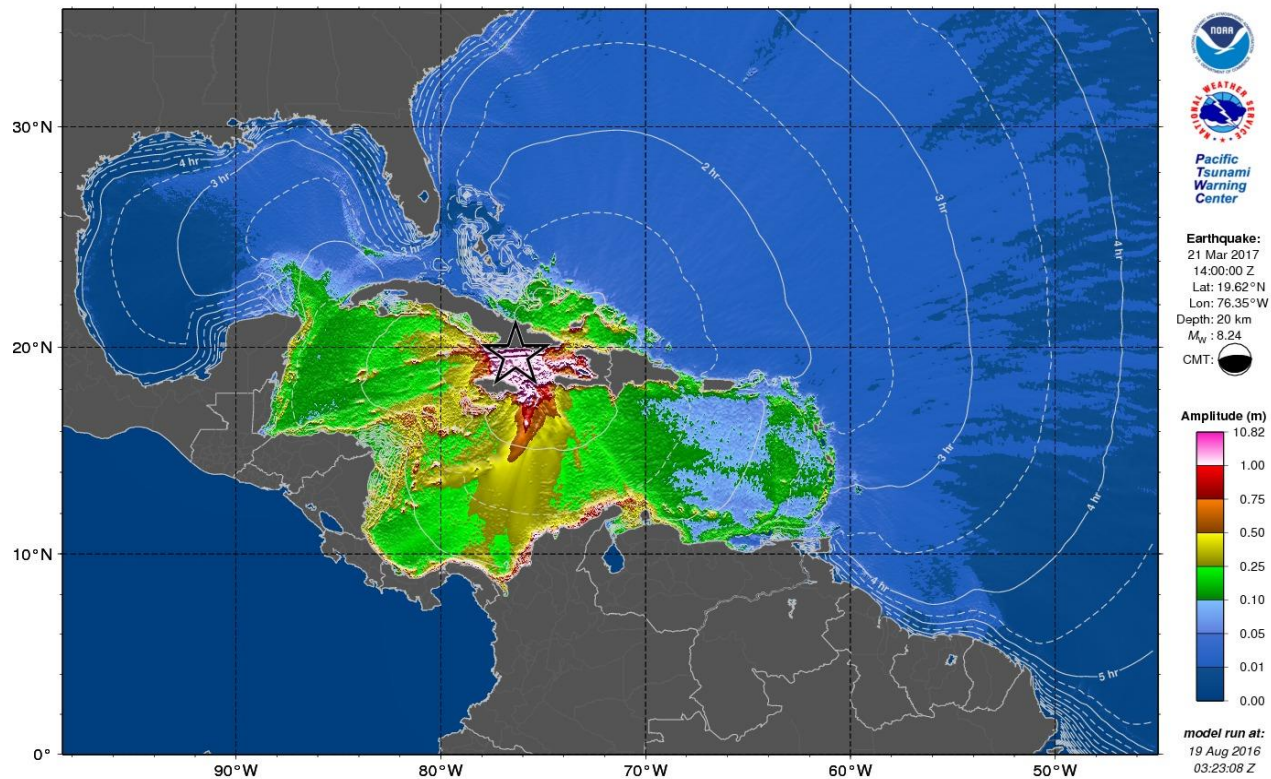
### RIFT forecast polygons for the Caribbean region on the Costa Rica scenario.

During a real event this product will only be made available to officially designated Tsunami Warning Focal Points and National Tsunami Warning Centers.

# Cuba Scenario

# Energy Forecast for Tsunami Wave Heights Cuba

PTWC Energy Forecast

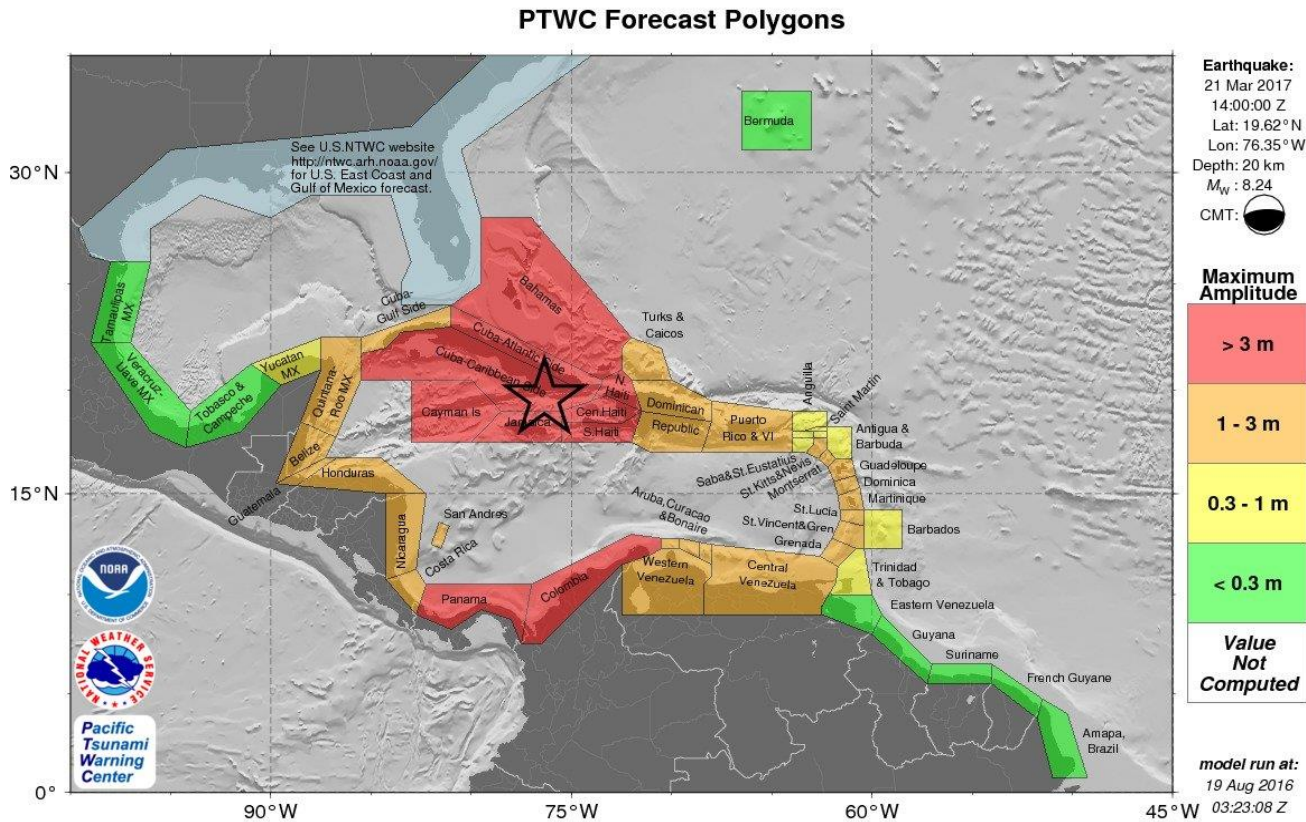


**RIFT maximum amplitude map for the Northwestern portion of the Caribbean Sea scenario for Cuba.**

During a real event this product will only be made available to officially designated Tsunami Warning Focal Points and National Tsunami Warning Centers.



# Polygons Forecast for Tsunami Wave Heights Cuba



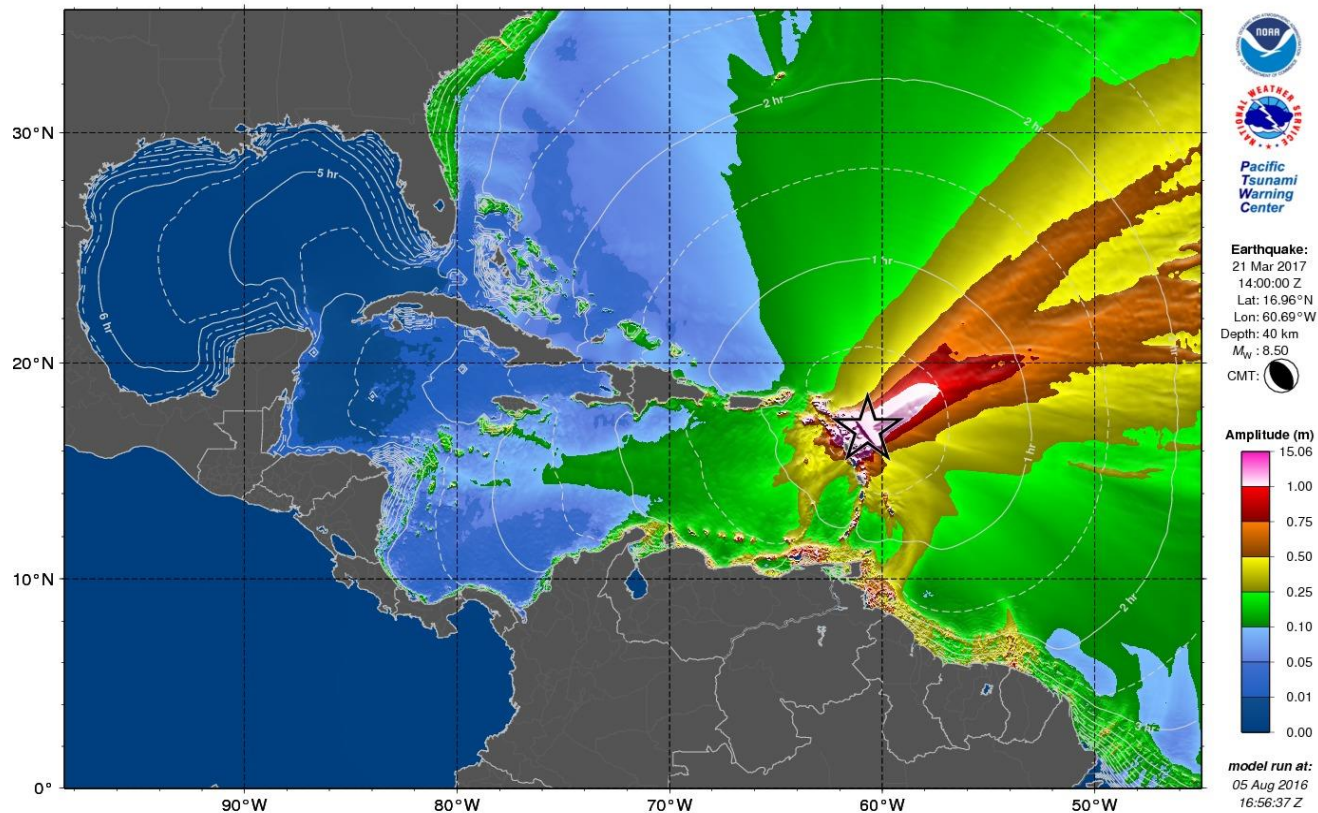
**RIFT forecast polygons for the Caribbean region on the Cuba scenario.**

During a real event this product will only be made available to officially designated Tsunami Warning Focal Points and National Tsunami Warning Centers.

# Northeastern Lesser Antilles Scenario

# Energy Forecast for Tsunami Wave Heights Northeastern Lesser Antilles

PTWC Energy Forecast



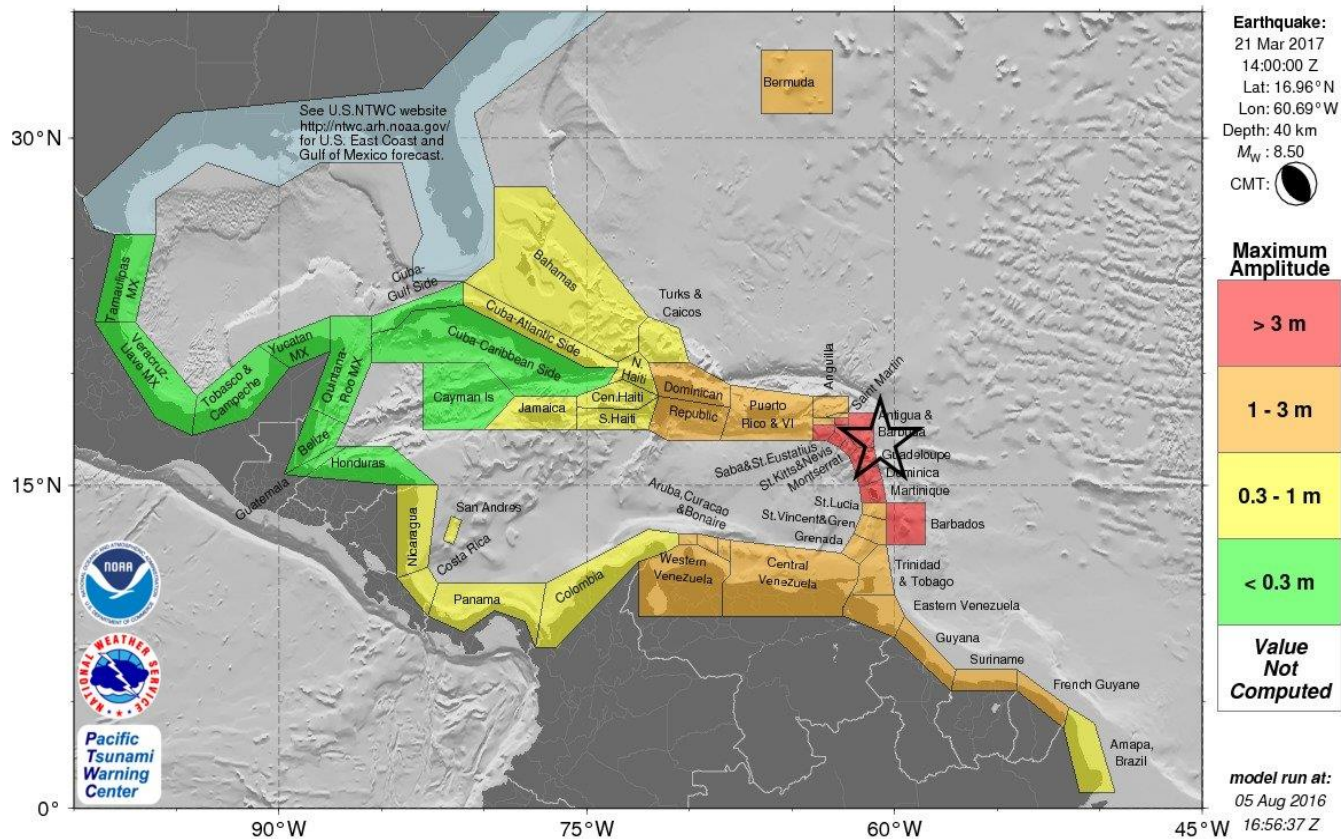
**RIFT maximum amplitude map for the Southeastern portion of the Caribbean Sea scenario for Northeastern Lesser Antilles.**

During a real event this product will only be made available to officially designated Tsunami Warning Focal Points and National Tsunami Warning Centers.



# Polygons Forecast for Tsunami Wave Heights Northeastern Lesser Antilles

PTWC Forecast Polygons



**RIFT forecast polygons for the Caribbean region on the Northeastern Antilles scenario.**

During a real event this product will only be made available to officially designated Tsunami Warning Focal Points and National Tsunami Warning Centers.

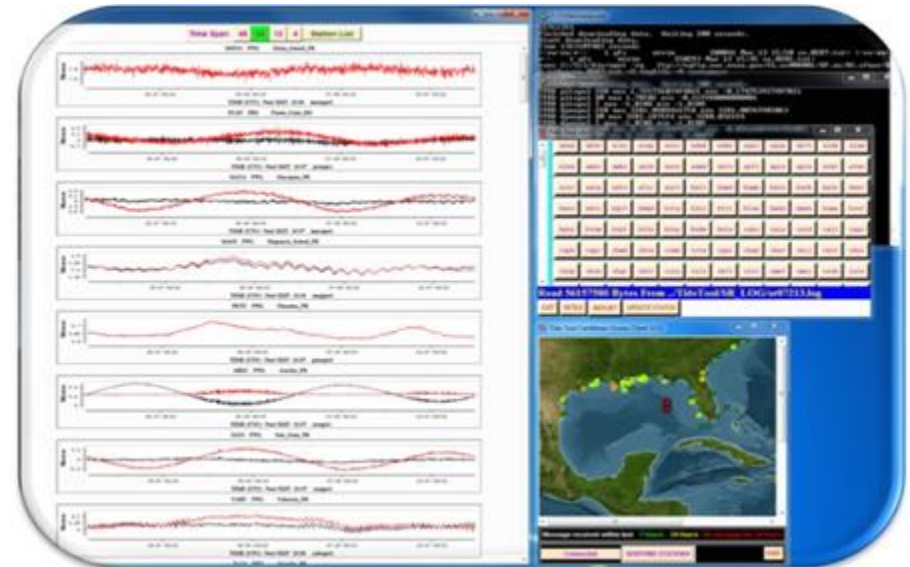
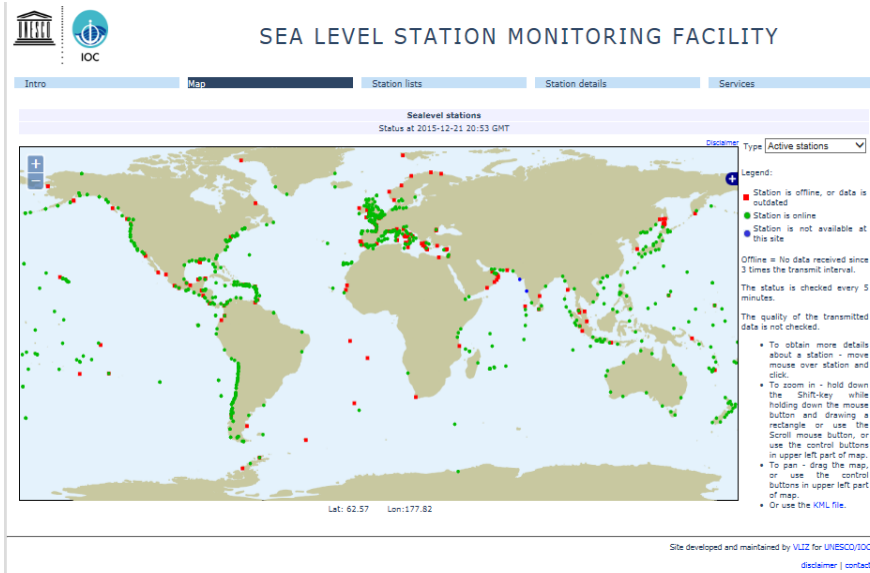


# Sea Level Monitoring

As good practice, during the exercise corresponding authorities are encouraged to check out sea level readings in real time on the IOC Sea Level Monitoring Facility and Tide Tool which can also be run with the earthquake parameters.

IOC Sea Level Monitoring Facility  
<http://www.ioc-sealevelmonitoring.org/>

Tide Tool  
[stuart.weinstein@noaa.gov](mailto:stuart.weinstein@noaa.gov)




# Member State Participation – The *Tsunami Zone* Registration

Member States establish their own national task teams to determine the scope of their national participation and testing.



Home | TsunamiZone Regions | Other Languages | Contact Us | Search | Login



**Alaska**  
Tsunami Preparedness Week  
March 25-31, 2017


[Register Here!](#) | [Know Your Zone](#) | [Who is Participating?](#) | [How to Participate](#) | [Resources](#) | [News & Events](#) | [Partners & Sponsors](#)

There is No Tsunami Warning, Advisory, Watch, or Threat in effect.

**WELCOME TO THE TSUNAMIZONE!**

[ESPAÑOL](#) | [FRANÇAIS](#)

Everyone, everywhere should know how to be prepared for tsunamis and what to do to be safe. This is true for people who live or work near the ocean, but also for anyone who may visit someday. Are you in the Zone?



TsunamiZone.org provides [suggestions](#) and [resources](#) for your family or organization to "[know your zone](#)" and to [learn](#) how to be safe.

Be counted among people and organizations worldwide by [registering](#) your 2017 tsunami preparedness activities!

**2017 CALENDAR**

- March 19-25  
Puerto Rico, U.S. Virgin Islands  
**CARIBE WAVE 2017 (March 21)**  
[LANTEX17](#) (March 22)
- March 25-31  
Alaska
- March 27-31  
[California](#)
- March 29  
PACIFEX exercise
- April 2-8  
Guam
- April  
Hawaii
- September 24-30  
American Samoa
- October  
Oregon & Washington


Over 100,000 participants registered

[f](#) [t](#)

The PTWC will send via email all the simulated enhanced products (text and graphical) to the designated TWFP and NTWC (no need to register to receive them **but if registered, you will be part of the statistical count of who is participating**). To verify the current list of officially designated UNESCO IOC CARIBE EWS TWFP and NTWC check out:

[http://www.ioc-tsunami.org/index.php?option=com\\_content&view=article&id=6&Itemid=22&lang=en](http://www.ioc-tsunami.org/index.php?option=com_content&view=article&id=6&Itemid=22&lang=en)

Username: tsunami pwd: bigwave


**CARIBE WAVE 2017**

CARIBE WAVE is the annual tsunami exercise of the UNESCO Tsunami and Other Coastal Hazards Warning System for the Caribbean and Adjacent Regions ([CARIBE EWS](#)). Its major objective is for countries, emergency management stakeholders and communities at risk to test, validate and update their tsunami response plans.

[ESPAÑOL](#) | [FRANÇAIS](#)

**When is CARIBE WAVE 2017?**

The annual Tsunami Regional Exercise, Caribe Wave 2017, will take place on **March 21, 2017**. [Register today to participate in this exercise.](#)

**Which scenario will be used for CARIBE WAVE 2017?**

For CARIBE WAVE 2017 three different scenarios will be simulated. Each country will choose the one that best fits their objectives. The first scenario simulates a magnitude 7.9 earthquake generated off the Caribbean coast of Costa Rica. The second scenario is an 8.2 magnitude earthquake off the Southeastern coast of Cuba. The third scenario is a magnitude 8.5 earthquake Northeast of the Lesser Antilles.

**What communication systems will be tested in this exercise?**

The initial message will be issued at 1400 UTC by the Pacific Tsunami Warning Center (PTWC) throughout all the regular broadcast channels to test communication systems and to start the exercise. Also, the PTWC will issue simulated messages for each of the scenarios to the UNESCO officially designated Tsunami Warning Focal Points (TWFPs) and National Tsunami Warning Centers. Each country and territory will decide if and how messages will be disseminated within its area of responsibility.

**Which agencies are participating in CARIBE WAVE 17?**

Each one of the 48 countries and territories members of CARIBE EWS will decide the level of participation and coordinate the corresponding activities within their jurisdiction.

**Why should I participate in this exercise?**

The vulnerability and the risk of loss of life and welfare from a tsunami along the coasts of the Caribbean and Adjacent Regions should be a big motivation for our communities and countries to be prepared for a tsunami and participate in this exercise.

The exercise guidelines, other related materials and links for registration are available at [caribewave.info](#).

**UNESCO CARIBE EWS**
**UNESCO CARIBE EWS  
Member States and  
Territories**

Antigua and Barbuda*	Bahamas
Barbados	Belize
Colombia	Brazil**
Costa Rica	Cuba
Dominica	Dominican Republic
France (Guadeloupe, Guyane, Martinique, Saint Martin, St. Barthelemy)	
Grenada	Guatemala
	Guyana
Haiti	Honduras
Jamaica	Mexico
Netherlands (Aruba***, Bonaire, Curacao***, Saba, Sint Eustatius, Sint Maarten***)	
Nicaragua	Panama
Saint Kitts and Nevis	Saint Lucia
Saint Vincent and the Grenadines	
Suriname	Trinidad and Tobago
United Kingdom of Great Britain & Northern Ireland (Anguilla***, Bermuda, British Virgin Islands***, Cayman Islands***, Montserrat***, Turks and Caicos)	
United States (Puerto Rico and U. S. Virgin Islands)	
Venezuela, Bolivarian Republic of	

\*not an IOC Member State

\*\*Designations of Tsunami National Contacts and Tsunami Warning Focal Points pending

\*\*\*UNESCO Associate Member States participating at IOC CARIBE EWS

**Observer Member States  
of UNESCO CARIBE EWS**

Canada	Peru
--------	------





[There is No Tsunami Warning, Advisory, Watch, or Threat in effect.](#)

**WELCOME TO THE TSUNAMIZONE!**

[ESPAÑOL](#) | [FRANÇAIS](#)

Everyone, everywhere should know how to be prepared for tsunamis and what to do to be safe. This is true for people who live or work near the ocean, but also for anyone who may visit someday. Are you in the Zone?

TsunamiZone.org provides [suggestions](#) and [resources](#) for your family or organization to "[know your zone](#)" and to [learn](#) how to be safe.

Be counted among people and organizations worldwide by [registering](#) your 2017 tsunami preparedness activities!



**2017 CALENDAR**

**March 19-25**  
[Puerto Rico, U.S. Virgin Islands, CARIBE WAVE 2017](#) (March 21), [LANTEX17](#) (March 22)

**March 25-31**  
Alaska

**March 27-31**  
[California](#)

**March 29**  
PACIFEX exercise

**April 2-8**  
Guam

**April**  
Hawaii

**September 24-30**  
American Samoa

**October**  
Oregon & Washington

Countries can keep track of registration by clicking on « Who is Participating »



## WHO IS PARTICIPATING?

Click on a category name to see a list of who is participating. Click on a region name to see details of participation totals by area.

These totals are current as of 03/06/2017 11:25 AM PST.

Category	Participants	Participation totals for each area	Total
<b>Total:</b>	<b>111,598</b>	<b>California</b>	<b>64325</b>
<a href="#">Individuals/Families</a>	170	<a href="#">North Coast</a>	83
<a href="#">Childcare and Pre-Schools</a>	130	<a href="#">Shasta Cascade</a>	0
<a href="#">K-12 Schools and Districts</a>	15,450	<a href="#">Bay Area</a>	1892
<a href="#">Colleges and Universities</a>	49,465	<a href="#">Delta Sierra</a>	3
<a href="#">Local Government</a>	9,067	<a href="#">Inyo-Mono</a>	0
<a href="#">State Government</a>	6,768	<a href="#">Central Valley South</a>	0
<a href="#">Federal Government (Including Military)</a>	28,436	<a href="#">Central Coast</a>	37070
<a href="#">Tribes</a>	0	<a href="#">Southern California Coast</a>	220
<a href="#">Businesses</a>	146	<a href="#">Inland Southern California</a>	4
<a href="#">Hotels and Other Lodgings</a>	0	<a href="#">San Diego</a>	25053
<a href="#">Healthcare</a>	611	<a href="#">Other Areas</a>	0
<a href="#">Senior Facilities/Communities</a>	50	<b>Caribbean</b>	<b>47271</b>
<a href="#">Disability/AFN Organizations</a>	0	<a href="#">Anguilla</a>	0
<a href="#">Non-Profit Organizations</a>	22	<a href="#">Antigua and Barbuda</a>	2500
<a href="#">Neighborhood Groups</a>	25	<a href="#">Aruba</a>	3
<a href="#">Preparedness Organizations</a>	1,029	<a href="#">Bahamas</a>	0
<a href="#">Faith-based Organizations</a>	15	<a href="#">Barbados</a>	304
<a href="#">Museums, Libraries, Parks, etc.</a>	0	<a href="#">Belize</a>	5
<a href="#">Volunteer/Service Clubs</a>	4	<a href="#">Bermuda</a>	6
<a href="#">Youth Organizations</a>	0	<a href="#">Brazil</a>	0
<a href="#">Animal Shelter/Service Providers</a>	0	<a href="#">British Virgin Islands</a>	115
<a href="#">Agriculture/Livestock</a>	0	<a href="#">Cayman Islands</a>	20
<a href="#">Volunteer Radio Groups</a>	51	<a href="#">Colombia</a>	0
<a href="#">Science/Engineering Organizations</a>	44	<a href="#">Costa Rica</a>	7
<a href="#">Media Organizations</a>	25	<a href="#">Cuba</a>	17
<a href="#">Other</a>	90	<a href="#">Curacao</a>	0
		<a href="#">Dominica</a>	0
		<a href="#">Dominican Republic</a>	12
		<a href="#">France</a>	0
		<a href="#">Grenada</a>	0
		<a href="#">Guadeloupe</a>	0
		<a href="#">Guatemala</a>	0
		<a href="#">Guyana</a>	0
		<a href="#">Haiti</a>	0



## WHO IS PARTICIPATING?

Click on a category name to see a list of who is participating. Click on a region name to see details of participation totals by area.

These totals are current as of 03/06/2017 11:25 AM PST.

Category	Participants	Participation totals for each area	Total
		<a href="#">Anquilla</a>	0
		<a href="#">Antigua and Barbuda</a>	2,500
		<a href="#">Aruba</a>	3
		<a href="#">Bahamas</a>	0
		<a href="#">Barbados</a>	304
		<a href="#">Belize</a>	5
		<a href="#">Bermuda</a>	6
		<a href="#">Brazil</a>	0
		<a href="#">British Virgin Islands</a>	115
		<a href="#">Cayman Islands</a>	20
		<a href="#">Colombia</a>	0
		<a href="#">Costa Rica</a>	7
		<a href="#">Cuba</a>	17
		<a href="#">Curacao</a>	0
		<a href="#">Dominica</a>	0
		<a href="#">Dominican Republic</a>	12
		<a href="#">France</a>	0
		<a href="#">Grenada</a>	0
		<a href="#">Guadeloupe</a>	0
		<a href="#">Guatemala</a>	0
		<a href="#">Guyana</a>	0
		<a href="#">Haiti</a>	0
		<a href="#">Honduras</a>	10
		<a href="#">Martinique</a>	20
		<a href="#">Mexico</a>	400
		<a href="#">Netherlands</a>	0
		<a href="#">Nicaragua</a>	0
		<a href="#">Panama</a>	8
		<a href="#">Puerto Rico</a>	42,105
		<a href="#">Saint Kitts and Nevis</a>	600
		<a href="#">Saint Lucia</a>	0
		<a href="#">Saint Martin</a>	0
		<a href="#">Saint Vincent and the Grenadines</a>	0
		<a href="#">Sint Maarten</a>	500
		<a href="#">Trinidad and Tobago</a>	63
		<a href="#">Turks and Caicos Islands</a>	0
		<a href="#">U.S. Virgin Islands</a>	142
		<a href="#">Venezuela</a>	427

# Media Arrangements

- PRSN Tsunami Media Guide (English and Spanish)  
<http://www.prsn.uprm.edu/mediakit/>
- Seismic Research Unit Tsunami and other Coastal Hazards WS Media Information Kit  
<http://www.uwiseismic.com>
- Handbook sample press release, which can be adapted as necessary.
- Social media; #CaribeWave

# Post-Exercise Evaluation Form

## Questionnaire

- Each CARIBE EWS member state and territory is requested to provide feedback on the exercise.
  - This feedback will assist the ICG/CARIBE-EWS in the evaluation of Caribe Wave 17 and the development of subsequent exercises, and help response agencies document lessons learned.
  - To facilitate feedback the online evaluation survey can be accessed at the following link:  
<https://www.surveymonkey.com/r/CaribeWave17>
  - The deadline for completing the evaluation is **April 3, 2017**.
    - 64 questions (2016 were 83 questions), 11 pages, should take no more than 20 minutes.



# Post-Exercise Evaluation Form

## Questionnaire

1B.2:

The PTWC issued the CARIBE WAVE 17 initial Dummy Message by several methods. Please check all methods through which the message was received by the TWFP/NTWC.

	Yes	No	Not Applicable
WMO Information Process (e.g., GTS, WIS)	<input type="checkbox"/>	<input type="checkbox"/>	<input type="checkbox"/>
NWWS	<input type="checkbox"/>	<input type="checkbox"/>	<input type="checkbox"/>
AISR/AFTN	<input type="checkbox"/>	<input type="checkbox"/>	<input type="checkbox"/>
EMWIN	<input type="checkbox"/>	<input type="checkbox"/>	<input type="checkbox"/>
GEONETCast	<input type="checkbox"/>	<input type="checkbox"/>	<input type="checkbox"/>
Fax	<input type="checkbox"/>	<input type="checkbox"/>	<input type="checkbox"/>
Email from PTWC	<input type="checkbox"/>	<input type="checkbox"/>	<input type="checkbox"/>
Social Media	<input type="checkbox"/>	<input type="checkbox"/>	<input type="checkbox"/>

Other (please specify)

1B.3:

The PTWC issued the CARIBE WAVE 17 initial Dummy Message by several methods. Please indicate the time at which the message was received by the TWFP/NTWC (UTC, Coordinated Universal Time).

	Hour	Minutes	Time Zone
WMO Information Process (e.g., GTS, WIS)	<input type="text"/>	<input type="text"/>	<input type="text"/>
NWWS	<input type="text"/>	<input type="text"/>	<input type="text"/>
AISR/AFTN	<input type="text"/>	<input type="text"/>	<input type="text"/>
EMWIN	<input type="text"/>	<input type="text"/>	<input type="text"/>
GEONETCast	<input type="text"/>	<input type="text"/>	<input type="text"/>
Fax	<input type="text"/>	<input type="text"/>	<input type="text"/>
Email from PTWC	<input type="text"/>	<input type="text"/>	<input type="text"/>
Social Media	<input type="text"/>	<input type="text"/>	<input type="text"/>

# Post-Exercise Evaluation Form

## Questionnaire

1B.4:

Were there any problems with the receipt of PTWC CARIBE WAVE 17 initial Dummy (Start of Exercise) Message?

- Yes
- No
- Not Applicable

Comments:

1B.5:

Did your TWFP/NTWC receive by email from PTWC the simulated exercise messages at the times specified in the Exercise Manual?

- Yes
- No
- Not Applicable

Comments:

1B.6:

Did the Tsunami Warning Focal Point / National Tsunami Warning Center receive any message from an organisation other than the PTWC (e.g., Hydro/Met Office)? If yes, please use the comment box to indicate the agencies that received and communicated the products from PTWC during the exercise.

- Yes
- No

Comments:

# Post-Exercise Evaluation Form

## Questionnaire

3.F.1:

Is your country already implementing the Community Performance Based Tsunami Recognition Program (TsunamiReady or Tsunami Ready)?

Yes

No

Comments:

3.F.2:

Is your country interested in implementing the Community Performance Based Tsunami Recognition Program (TsunamiReady or Tsunami Ready)?

Yes

No

Other (please specify)

3.F.3:

How many communities in your country have already been designated as TsunamiReady® or Tsunami Ready?

Communities



3.F.4:

What is the target number of Tsunami Ready communities in your country/territory you expect will pursue Tsunami Ready recognition?

Communities



# Resources

- IOC Manual “How to plan, conduct and evaluate tsunami exercises” which will also be a useful resource.
- CARIBE WAVE 2011, 2013, 2014, 2015, 2016 Handbooks
- CARIBE WAVE 2013, 2014, 2015, 2016 Final and Media Report
- PTWC Enhanced Products for the CARIBE-EWS
- CARIBE EWS Regional Tsunami Service Provider Document

Available at [www.caribewave.info](http://www.caribewave.info)

- Questions on the exercise can be addressed to the members of the CARIBE WAVE 17 Task Team

## Additional Info

- Additional materials will be added to CTWP ([www.caribewave.info](http://www.caribewave.info)) and PRSN websites.
- Send links of other national pages to [christa.vonh@noaa.gov](mailto:christa.vonh@noaa.gov) to include on CTWP and PRSN websites
- This presentation is available on CTWP website

# CARIBE WAVE 17 Task Team

Person	Telephone #	Email
<b>Patrick Tyburn, CARIBE WAVE 17 Chair, CARIBE EWS Chair WG4</b>	596-596-393813	<a href="mailto:patrick.tyburn@martinique.pref.gouv.fr">patrick.tyburn@martinique.pref.gouv.fr</a>
<b>Elizabeth Vanacore, PRSN, CARIBE WAVE past Chair</b>	1-787-833-8433	<a href="mailto:elizabeth.vanacore@upr.edu">elizabeth.vanacore@upr.edu</a>
<b>Christa von Hillebrandt-Andrade, CARIBE EWS Chair; NWS CTWP Manager</b>	1-787-249-8307	<a href="mailto:christa.vonh@noaa.gov">christa.vonh@noaa.gov</a>
<b>Milton Puentes, CARIBE EWS Vice Chair</b>	57-1-2020490	<a href="mailto:milpuentes@gmail.com">milpuentes@gmail.com</a>
<b>Paul Martens, CARIBE EWS Vice Chair</b>	1-721-542-6669	<a href="mailto:Paul.Martens@sintmaartengov.org">Paul.Martens@sintmaartengov.org</a>
<b>Jean Marie Saurel, CARIBE EWS WG1 Chair</b>	33-183-957437	<a href="mailto:saurel@ipgp.fr">saurel@ipgp.fr</a>
<b>Silvia Chacón, Chair CARIBE EWS WG2</b>	506-8309-6690	<a href="mailto:silviachaconb@gmail.com">silviachaconb@gmail.com</a>
<b>Natalia Zamora, Scientific Expert - Costa Rica Scenario</b>	NA	<a href="mailto:nzsauma@gmail.com">nzsauma@gmail.com</a>
<b>Antonio Aguilar, CARIBE EWS WG3 Chair</b>	582-122575153	<a href="mailto:antoniodesastres@gmail.com">antoniodesastres@gmail.com</a>
<b>Charles McCreery, PTWC Director</b>	1-808-689-8207	<a href="mailto:charles.mccreery@noaa.gov">charles.mccreery@noaa.gov</a>
<b>Gerard Fryer, PTWC Rep.</b>	1-808-689-8207	<a href="mailto:gerard.fryer@noaa.gov">gerard.fryer@noaa.gov</a>
<b>Ronald Jackson, Director CDEMA</b>	246-425-0386	<a href="mailto:ronald.Jackson@cdema.org">ronald.Jackson@cdema.org</a>
<b>Roy Barboza Sequeira, Executive Secretary, CEPREDENAC</b>	502-2390-0200	<a href="mailto:rbarboza@sica.int">rbarboza@sica.int</a>
<b>Bernardo Aliaga, Technical Secretary UNESCO</b>	33-1-45683980	<a href="mailto:b.aliaga@unesco.org">b.aliaga@unesco.org</a>
<b>Valerie Clouard, Scientific Expert – Northeastern Antilles Scenario</b>	596-596-784144	<a href="mailto:clouard@ipgp.fr">clouard@ipgp.fr</a>
<b>Bladimir Moreno, Scientific Expert – Cuba Scenario</b>	582- 641112	<a href="mailto:bladimir@cenais.cu">bladimir@cenais.cu</a>

# Timeline

ACTION	DUE DATE
Draft Circulated among ICG CARIBE EWS TNC/TWFP	Sep-16
Deadline for Comments	Sep-16
Final Exercise Handbook Available Online	Oct-16
Circular Letter Issued by IOC to MS	Nov-16
1 <sup>st</sup> Webinar CW	✓ 17 - Jan- 2017 -English ✓ 18 - Jan- 2017 -Spanish ✓ 19 - Jan- 2017 -French
2 <sup>nd</sup> Webinar CW	✓ 7- Mar- 2017 -English 8- Mar- 2017 -Spanish 9- Mar- 2017 -French
Member States and Territories inform which scenario they will be using for the exercise	10-Mar-2017
Exercise	21-Mar-17
Exercise Evaluation Due	3-Apr-17
Draft Final Caribe 17 Report	19- Apr- 17
Discussion of Exercise ICG CARIBE EWS 12 <sup>th</sup> Session	10-12 May-17

# Questions, Comments

Thank you for participating

[christa.vonh@noaa.gov](mailto:christa.vonh@noaa.gov)