



WHERE CAN I FIND NWS GIS DATA?

The National Weather Service produces several data sets that are offered in formats available for GIS import. While not a comprehensive list, listed below are some of the most commonly used websites.

National Weather Service GIS Data

<http://www.weather.gov/gis/>

This site includes data for current weather, operational forecasts, flash-flood guidance and precipitation data.

NEXRAD Composites

<http://radar.weather.gov/ridge/GIS.html>

This site provides radar imagery in a geo-referenced format using associated "world" files.

Severe Weather Polygons

<http://www.nws.noaa.gov/regsci/gis/>

This site contains polygon data for tornadoes, severe thunderstorms, flash floods, and special marine warnings in sets of GIS Shapefiles, available in near real-time.

National Digital Forecast Database (NDFD)

<http://www.weather.gov/ndfd/technical.htm>

This database is a collection of gridded forecasts of sensible weather elements such as cloud cover, maximum temperature, etc.

National Climatic Data Center (NCDC)

<http://gis.ncdc.noaa.gov/geoportal>

This site is the largest active archive for weather data, including surface, upper air, and marine climate data.

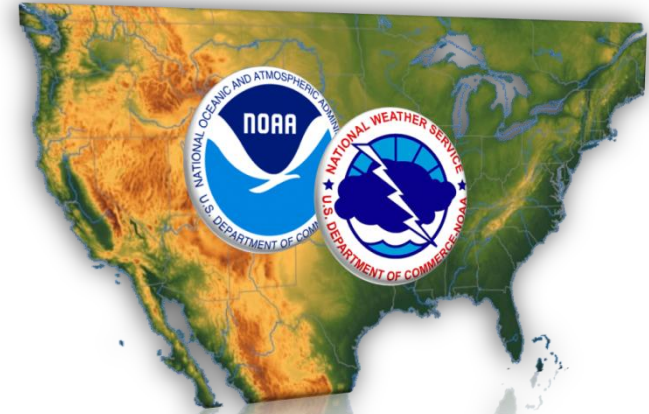
NOAA NWS MISSION

Provide weather, water, and climate forecasts and warnings for the United States, its territories, adjacent waters, and ocean areas, for the protection of life and property and the enhancement of the national economy.



NOAA'S NATIONAL WEATHER SERVICE

GIS PRODUCTS & SERVICES



UNLEASH THE POTENTIAL OF NWS GIS!

NATIONAL WEATHER SERVICE

HEADQUARTERS

1325 EAST WEST HIGHWAY
SILVER SPRING, MD 20910

WWW.WEATHER.GOV

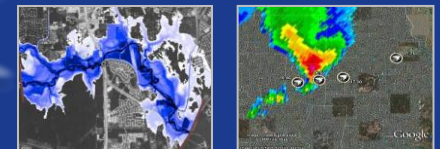
WWW.NOAA.GOV

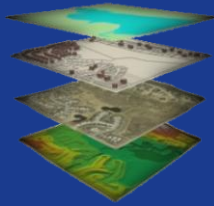
W-NWS.WEBMASTER@NOAA.GOV



SINCE 1870

AN OVERVIEW OF GIS PRODUCTS AND SERVICES AVAILABLE FROM THE NATIONAL WEATHER SERVICE





A geographic information system (GIS) integrates hardware, software, and data for capturing, managing, analyzing, and displaying all forms of geographically referenced information.

GIS is a common link across a wide range of professions, disciplines, and interest groups. Applications range from land-use planning and wildlife habitat tracking & analysis to evacuation planning to in-car navigation systems.

NWS provides data which helps with alerting counties of severe weather, making decisions regarding road closures during a winter storm, or preparing for a major hurricane evacuation...

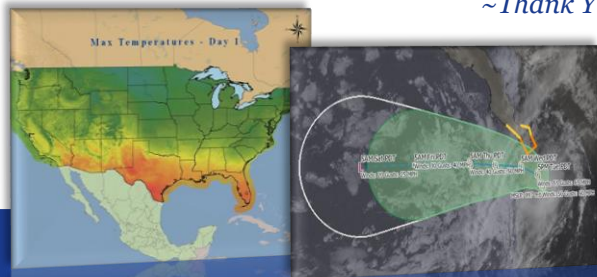
Utilizing NWS data in Geographical Information System (GIS) applications has become an integral part of the agency. A number of NWS products are available to you in multiple GIS formats to help you achieve your goals.

The NWS is committed to helping you.

To help shape future NWS GIS data and services, please share your comments & suggestions at the following website:
<https://ocwws.weather.gov/gis/index.php>

Your suggestions will be considered when prioritizing new NWS GIS data and services.

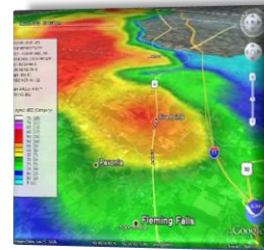
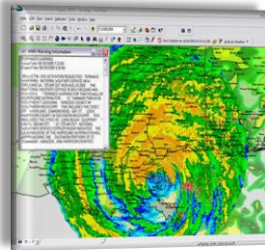
~Thank You



NDFD & TROPICAL FORECAST INFORMATION

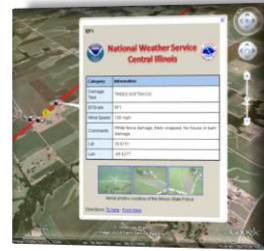
JUST A FEW EXAMPLES OF GIS DATA PROVIDED BY THE NATIONAL WEATHER SERVICE...

R
A
D
A
R



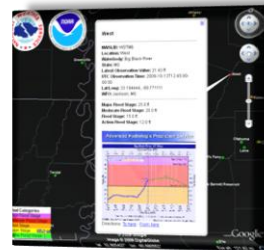
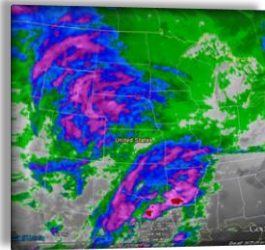
R
A
D
A
R

W
A
R
N
I
N
G
P
O
L
Y
G
O
N
S



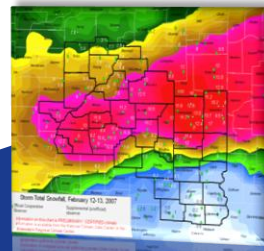
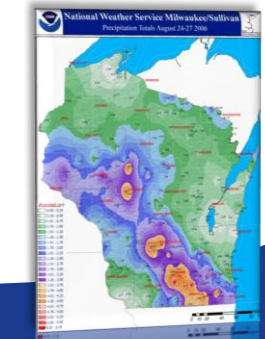
S
T
O
R
M
S
U
R
V
E
Y
S

S
A
T
E
L
L
I
T
E



I
N
F
O
R
M
A
T
I
O
N

O
B
S
E
R
V
A
T
I
O
N



A
N
A
L
Y
S
I
S

WHAT DATA IN GIS FORMATS DOES THE NWS OFFER?

NWS GIS Compatible Data:

- Watches, Warnings & Advisories
- Weather Forecast Data — NDFD (National Digital Forecast Database)
- Statistical Forecast Guidance Data — NDGD (National Digital Guidance Database)
- WSR-88D NEXRAD Radar Imagery
- Tropical Storm/ Hurricane Forecast Tracks
- Storm Surge Probabilistic Forecasts
- Flash Flood Guidance (FFG)
- High Resolution Precipitation Estimates
- Climate Data

GIS Formats supported by NWS:

- Shapefiles
- XML/GML
- WCS
- WMS
- netCDF
- KML
- WFS
- PNG / GIF / World Files

