



NWS Wilmington, Ohio February 2025 Regional Summary

Regional Summary

Despite the rather warm start to February, a winter pattern evolved for the middle 2 weeks of the month, bringing bouts of accumulating snow and numerous days with highs in the 20s and 30s and lows in the teens. Within this stretch was a widespread heavy rain event from the 15th into the 16th, which brought widespread areal and river flooding to the region. The month ended similar to how it began, a bit on the warmer side with a taste of spring weather!

Temperatures

The month of February started off on a warm note, with several days of above normal temperatures through the first week before a colder pattern settled in beyond the 10th. Much of the following 2 weeks featured well below normal temperatures, particularly from the 17th through the 20th in which highs only reached into the upper teens and lower 20s, with lows in the teens. The pattern did moderate a bit, particularly for the final 5 days or so of the month, which featured numerous days with highs in the 40s, 50s, and 60s.

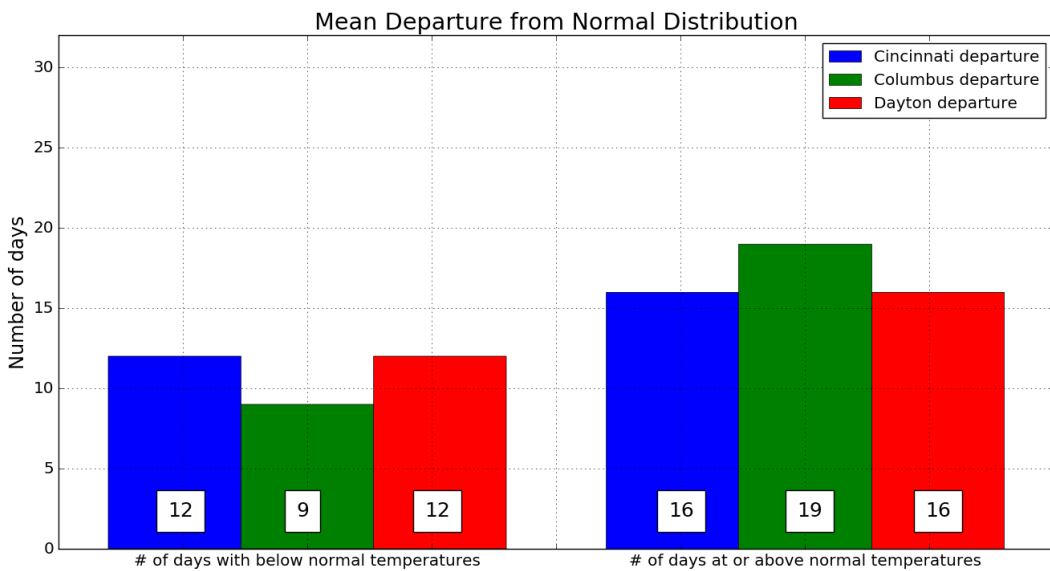
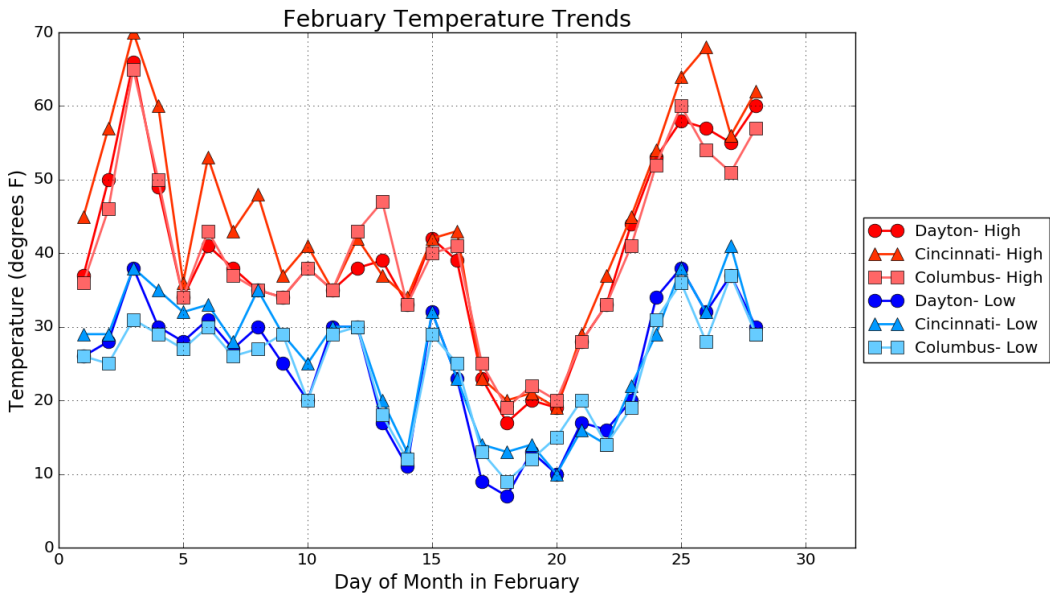
Even though overall temperatures for the month were near normal, the temperatures for most of the month were far from normal values in most cases. There were several days that were either 10 degrees or more above normal and several days that were 10 degrees or more below normal.

A daily record high temperature of 70°F and 66 °F was observed at Cincinnati (KCVG) and Dayton (DAY), respectively, on the 3rd, breaking the previous record for the date set in 1883 and 1927, respectively. A new daily record high of 65°F was also set at Columbus (KCMH) on the same date, breaking a daily record from 1890.

Site	Avg Temp (°F)	Avg High Temp (°F)	Avg Low Temp (°F)	Departure From Normal (°F)	Maximum Temperature (°F)	Minimum Temperature (°F)
Cincinnati (CVG)	34.9	43.6	26.2	+0.2	70 on 3 rd	10 on 20 th
Columbus (CMH)	32.1	40.0	24.1	-0.4	65 on 3 rd	9 on 18 th
Dayton (DAY)	32.2	39.8	24.6	-0.6	66 on 3 rd	7 on 18 th



Temperatures (Continued)



Precipitation

The month of February featured an active weather pattern across the Ohio Valley, with numerous systems bringing a combination of rain and snow to much of the region. In fact, there were very few completely dry stretches of more than a few days, which resulted in a slightly wetter-than-normal February for much of the area.

After starting the month with a few dry days, a wetter pattern evolved from the 5th through the 8th. Another system brought more precipitation on the 11th into the 12th, with the major heavy rain event evolving from the 15th through the 16th. This event yielded 2-3 inches of rain for many spots near/south of the I-71 corridor, with locales further to the north in west-central Ohio receiving much less. This event, which produced widespread areal and river flooding, had a band of heavy snow on the backside, which resulted in 2-3 inches of snow immediately following 2-3 inches of rain. A colder pattern then evolved for much of the next week, providing several more light snow events through the 20th. There were a few additional precipitation events towards the end of the month.

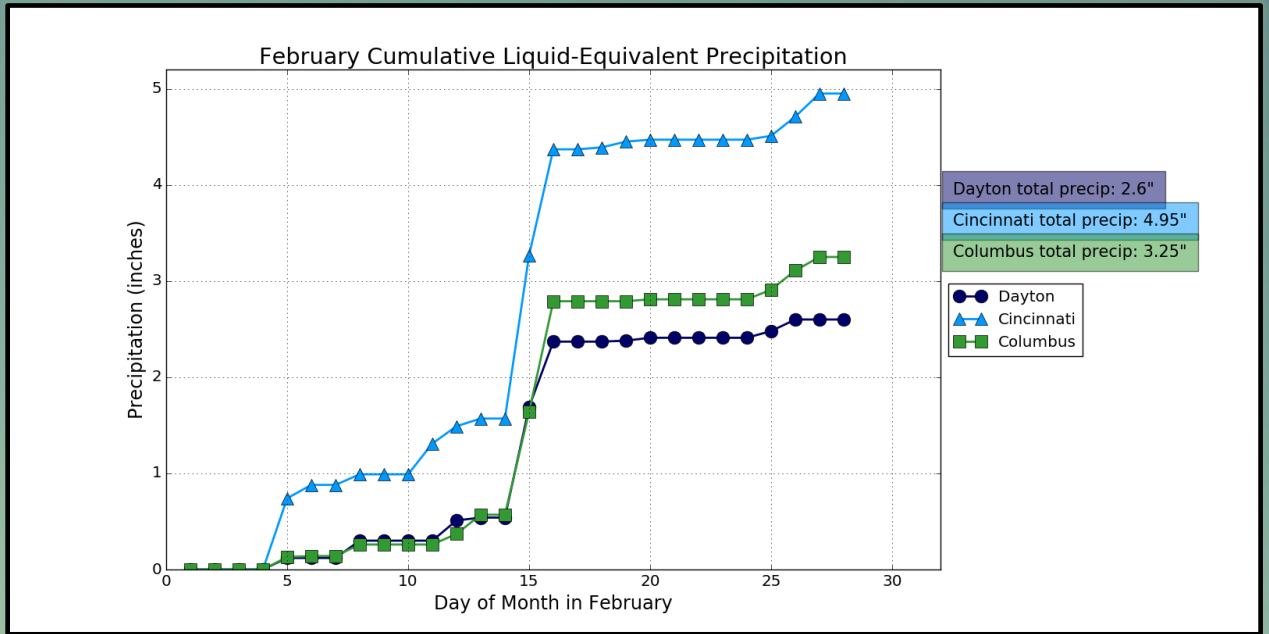
The 2-day total of 2.80" of rain on the 15th-16th at Cincinnati (KCVG) was the 12th-highest 2-day total in the month of February on record at the site. It was the most rain in a 2-day span in February at the site since 2018.

Snowfall and precipitation totals for the month varied quiet a bit with some parts of the region receiving less than 2 inches of snow for the month while others had over 8 inches. Some areas received close to 7 inches of liquid equivalent precipitation while others had less than 2 inches.

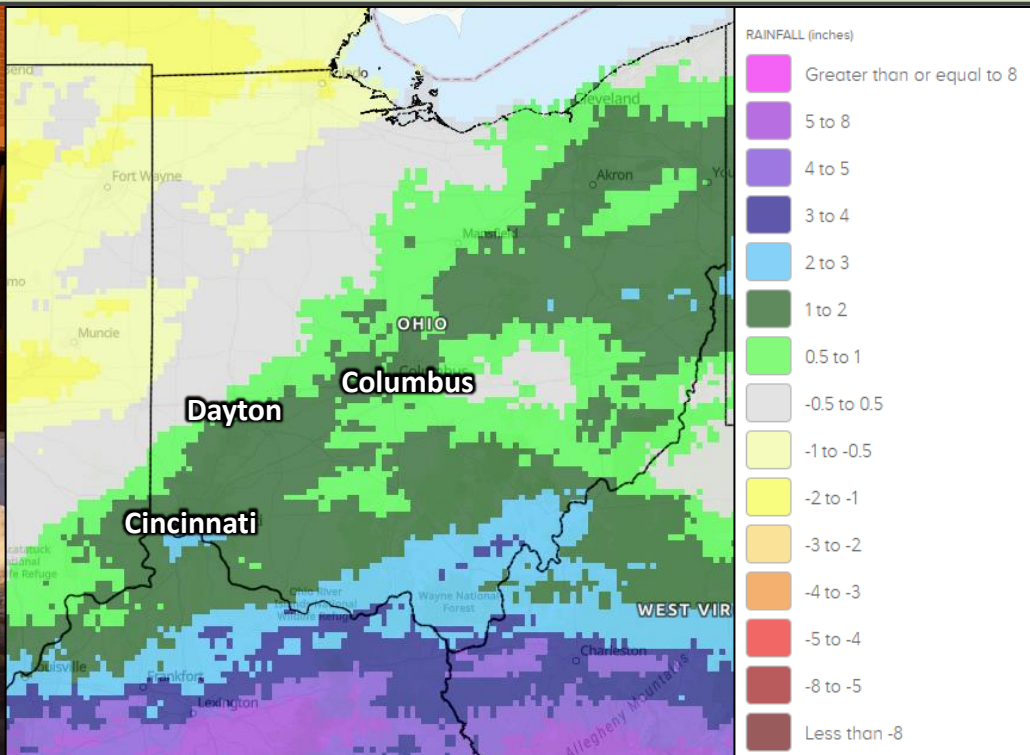
Site	Total Precipitation (in.)	Departure From Normal (in.)	Max Daily Precipitation (in./date)		Total Snowfall (in.)	Max Daily Snowfall (in./date)	
Cincinnati (CVG)	4.95	+1.78	1.70	15 th	8.8	3.2	02/11
Columbus (CMH)	3.25	+0.84	1.15	16 th	2.3	1.9	02/16
Dayton (DAY)	2.60	+0.25	1.15	15 th	3.9	3.1	02/11



Precipitation (Continued)



February Precipitation Departure From Normal (In.)



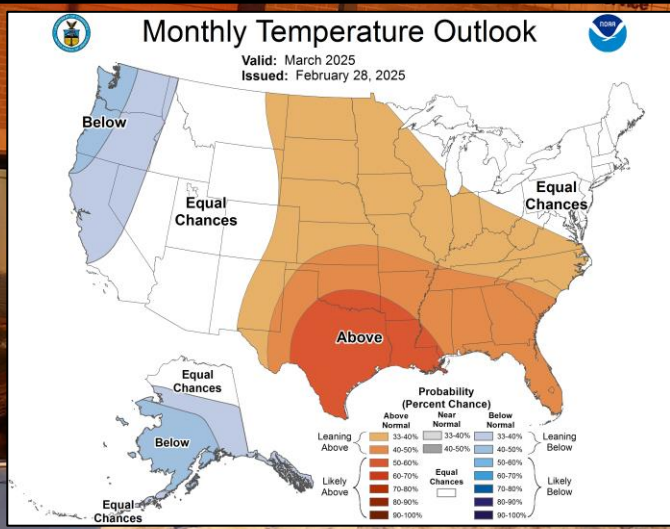
March Outlook

The latest outlook from the Climate Prediction Center calls for an increased likelihood of above normal temperatures and precipitation.

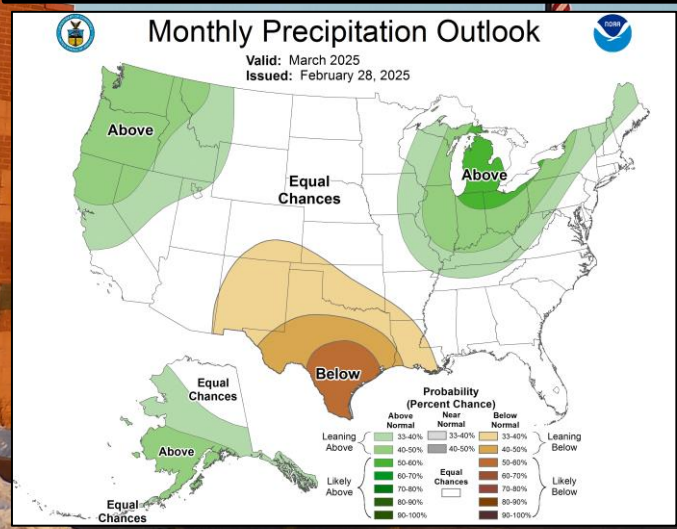
Site	Normal Avg Temp (°F)	Normal High (°F)	Normal Low (°F)
Cincinnati (CVG)	43.6°F	53.5°F	33.8°F
Columbus (CMH)	41.6°F	51.1°F	32.0°F
Dayton (DAY)	42.1°F	51.5°F	32.7°F

Site	Normal Precipitation (in.)	Normal Snowfall (in.)
Cincinnati (CVG)	4.16"	3.4"
Columbus (CMH)	3.62"	4.1"
Dayton (DAY)	3.50"	3.9"

Upcoming Temperature Outlook



Upcoming Precipitation Outlook



Spring Outlook

The Climate Prediction Center is calling for an increased likelihood of above normal temperatures and precipitation for the March, April, and May timeframe.

La Niña conditions are expected to persist in the near term, however there is a 66% chance of a transition to ENSO-neutral conditions likely during the March to May time period.

Three-Month (MAM) Temp. Outlook

Three-Month (MAM) Precip. Outlook

