



NWS Wilmington, Ohio March 2022 Regional Climate Summary

Regional Climate Summary

March featured several large swings in temperatures, but ultimately recorded above normal temperature values across the region. In fact, all major climate sites had a monthly average temperature value greater than three degrees above normal. Precipitation was a bit more sparse this month, leading to below normal values for majority of our region with the exception of Dayton and several other counties in west-central OH and eastern IN. While several days of snowfall occurred, only one event led to snow totals exceeding one inch. The end of the month also featured a major synoptic wind event.

Temperatures

The first week of March consisted of well above normal temperatures and it also provided the first 70° days across the area. One daily max temperature record was set on March 6th in Dayton, OH. A period of wet weather between the 6th and the 8th of the month lead to a period of near normal to below normal temperatures stretching to the 13th. High temperatures failed to climb out of the 20s on the 12th , however, no daily low max temperatures were observed.

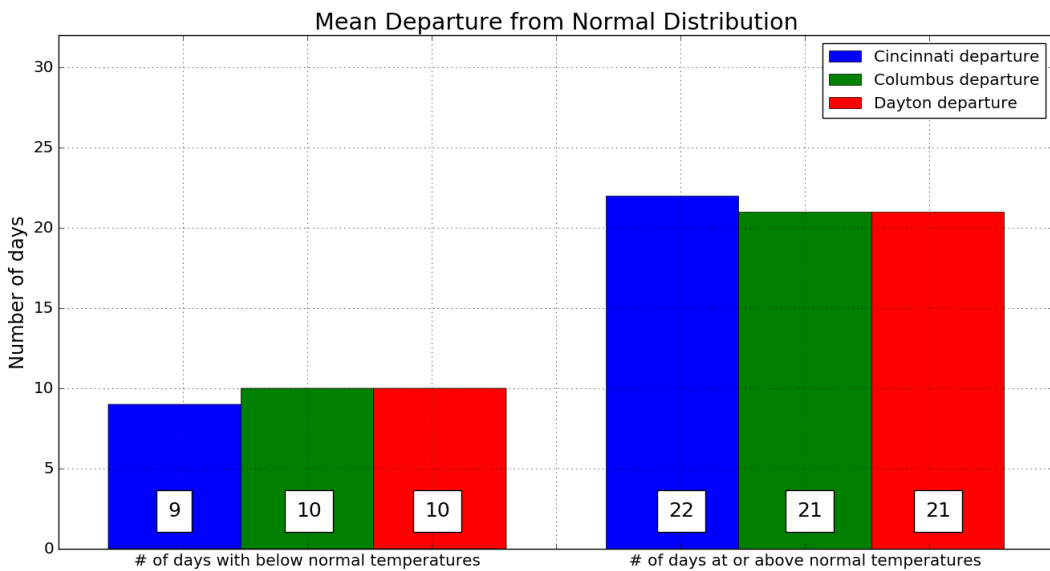
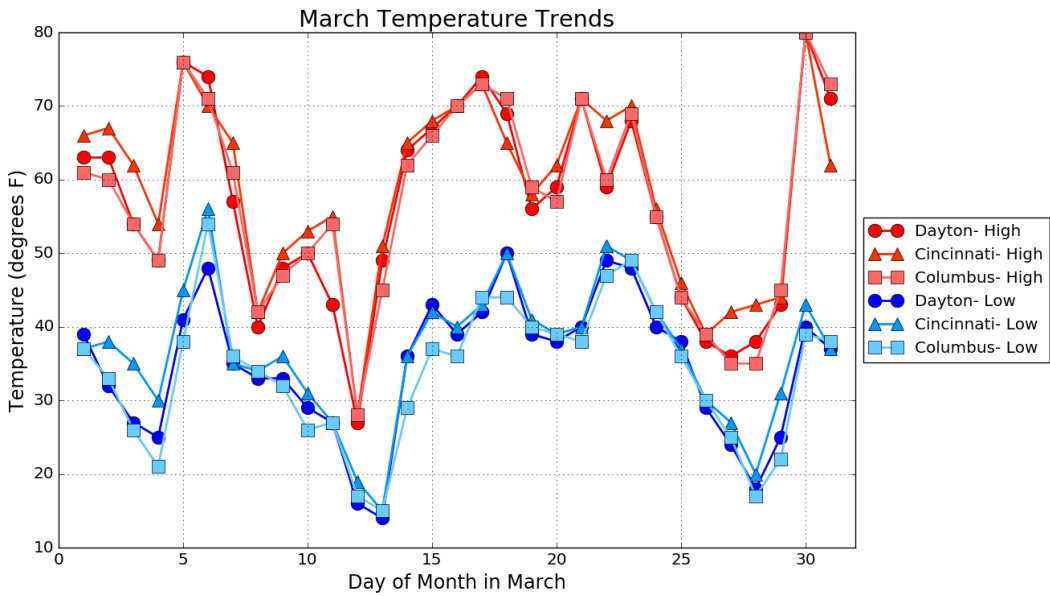
Through the middle of the month and into the fourth week, temperatures returned to above normal. Temperatures ranged from the mid 50s into the lower 70s. Dayton, OH set another daily max temperature record on March 17th.

The final week of March started well above normal, but quickly dipped to about 10 to 20 degrees below normal for the 27th and 28th. Shortly thereafter, near record highs were observed on the 30th when all major climate sites observed a high temperature of 80 degrees.

| Site | Avg Temp (°F) | Avg High Temp (°F) | Avg Low Temp (°F) | Departure From Normal (°F) | Maximum Temperature (°F) | Minimum Temperature (°F) |
|------------------|---------------|--------------------|-------------------|----------------------------|--------------------------|--------------------------|
| Cincinnati (CVG) | 47.7 | 58.7 | 36.6 | +4.1 | 80 | 15 |
| Columbus (CMH) | 45.3 | 56.8 | 33.8 | +3.7 | 80 | 15 |
| Dayton (DAY) | 45.6 | 56.6 | 34.6 | +3.5 | 80 | 14 |



Temperatures (Continued)



Precipitation

For the first part of March, much of the area observed dry conditions, however, a period of warmer temperatures provided a surge of moisture to close out the first week of the month. Cincinnati and Columbus areas observed rainfall amounts greater than an inch, and Dayton observed over two inches. In fact, a daily maximum rainfall record was set on March 7th, when 2.48" of rain fell. For Dayton, OH's official record, that is the 7th wettest single day during the month of March going back to 1894.

Cooler weather brought a taste of winter back into the region with light snow being observed at the climate sites on the 12th. Heavier snow did fall across the southeastern portions of the area with 4-7" measured. Another period of drier weather occurred between the 13th and 17th.

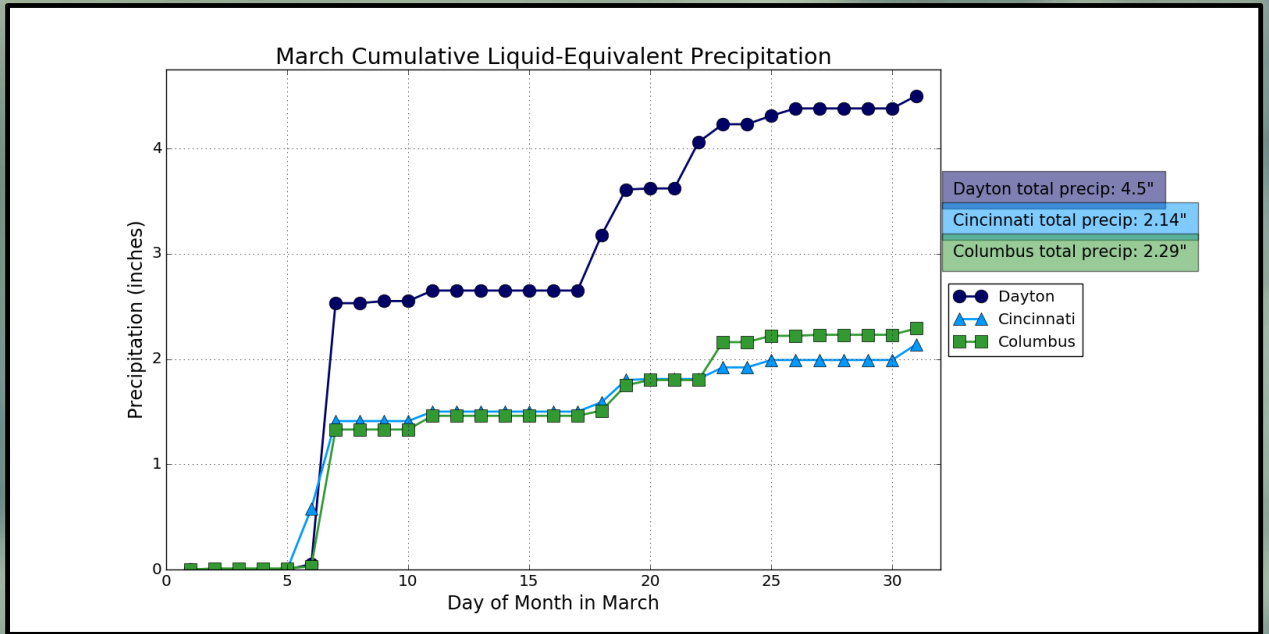
From the 18th through the 23rd, several low pressures would move through the area, providing rainfall amounts of a few tenths of an inch to as high as a half inch.

The final week of March remained in an unsettled pattern, but minimal amounts of precipitation were recorded. A weakening line of showers moved in on the 31st and provided near a tenth of an inch of liquid water for our climate sites, which was the most rainfall during this final week.

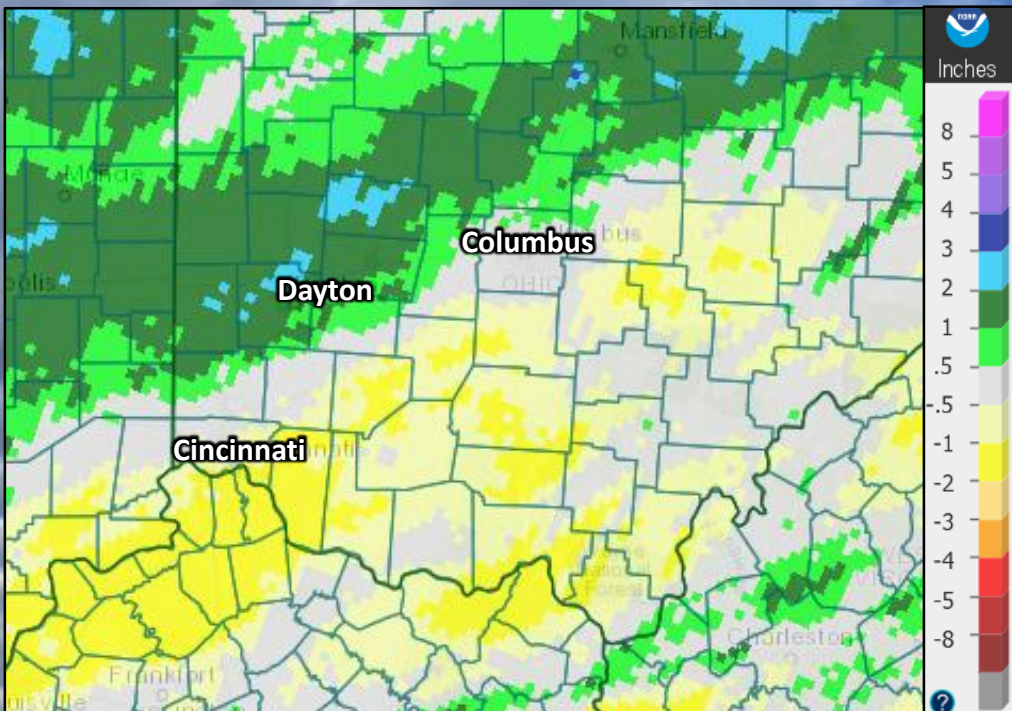
| Site | Total Precipitation (in.) | Departure From Normal (in.) | Max Daily Precipitation (in./date) | | Total Snowfall (in.) | Max Daily Snowfall (in./date) | |
|------------------|---------------------------|-----------------------------|------------------------------------|-----------------|----------------------|-------------------------------|------------------|
| Cincinnati (CVG) | 2.14 | -2.02 | 0.83 | 7 th | 2.3 | 2.3 | 11 th |
| Columbus (CMH) | 2.29 | -1.33 | 1.30 | 7 th | 2.2 | 2.1 | 11 th |
| Dayton (DAY) | 4.50 | +1.00 | 2.48 | 7 th | 1.5 | 1.0 | 11 th |



Precipitation (Continued)

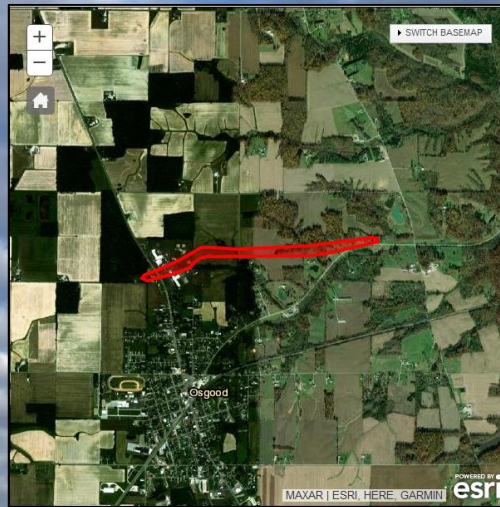
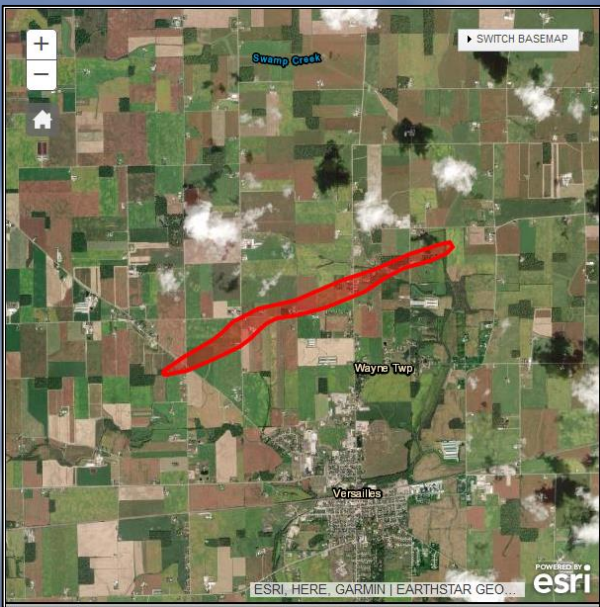


March Precipitation Departure From Normal (In.)



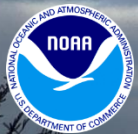
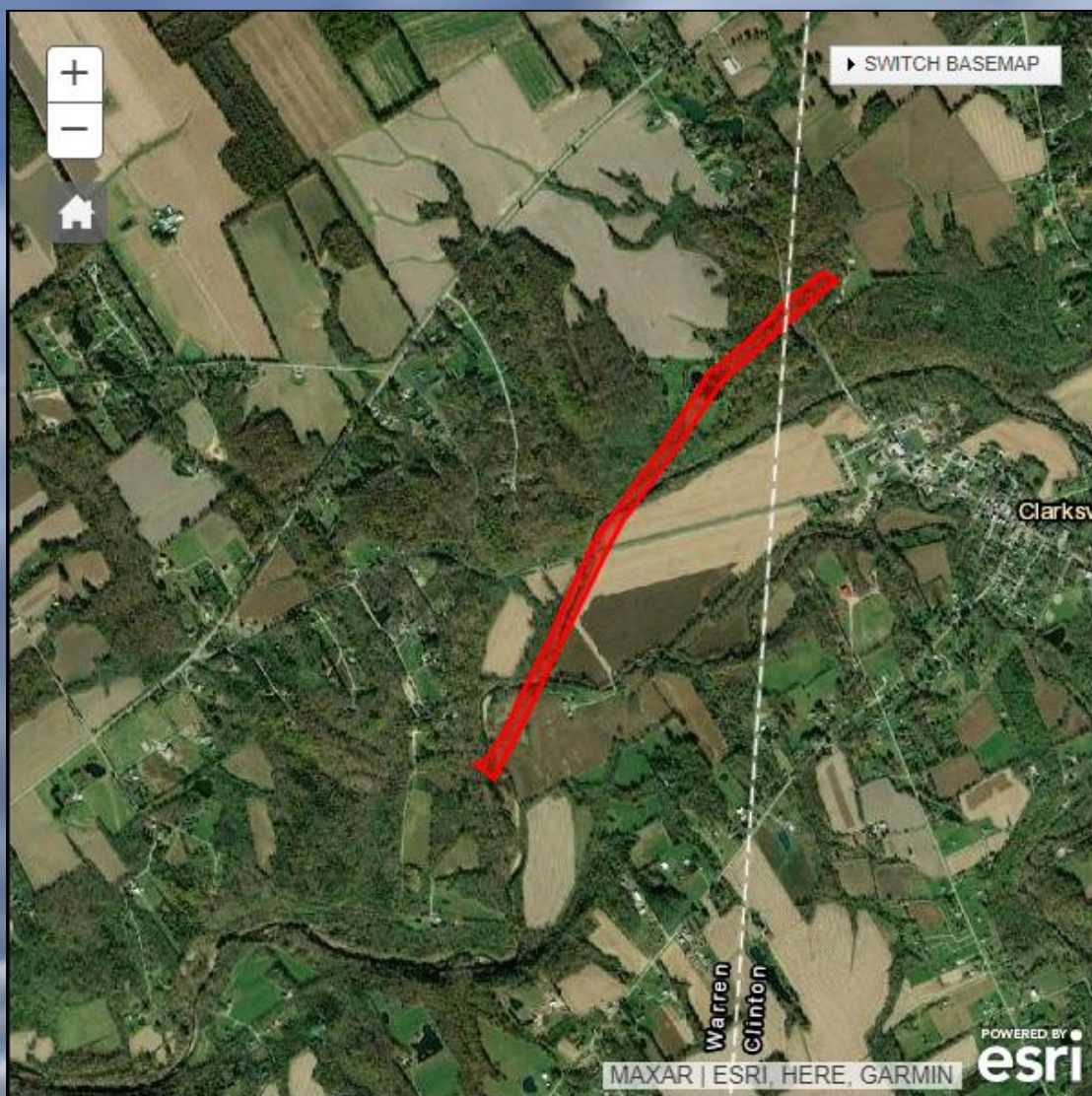
Severe Weather

Severe storms moved through on the 6th through the 7th. Damaging winds, tornadoes, and flooding occurred during this time. The three tornadoes were EF0 tornadoes. One tornado was north of Versailles, Ohio, another was near Russia, Ohio, and a third was near Osgood, Indiana.



Severe Weather

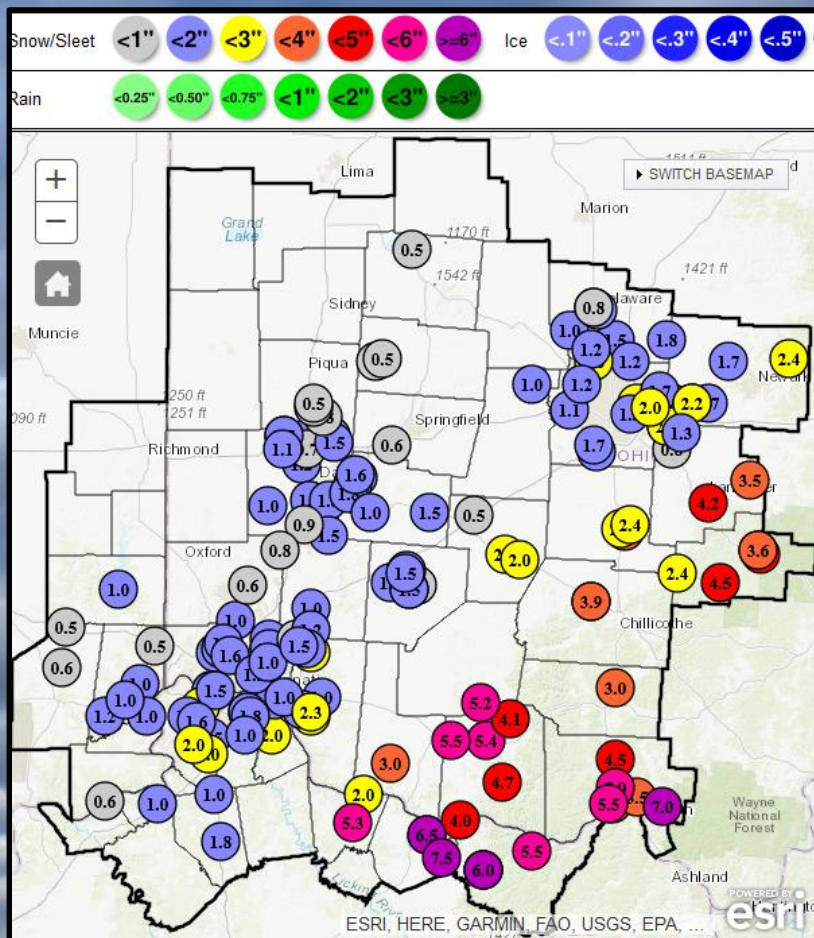
Severe storms moved through on the 23rd. A few storms brought damaging winds and dime to nickel size hail. Also, one tornado was observed. The confirmed tornado, an EF-0, developed west of the town of Clarksville, OH, causing damage to trees and a few structures. The tornado dissipated north of Clarksville.



Winter Weather

The primary snowfall event during march was a system that moved through March 11th to the 12th. Snow developed during the day on Friday, March 11th, and continued into the overnight hours before tapering off through Saturday morning, March 12th.

March 11th to 12th Snowfall



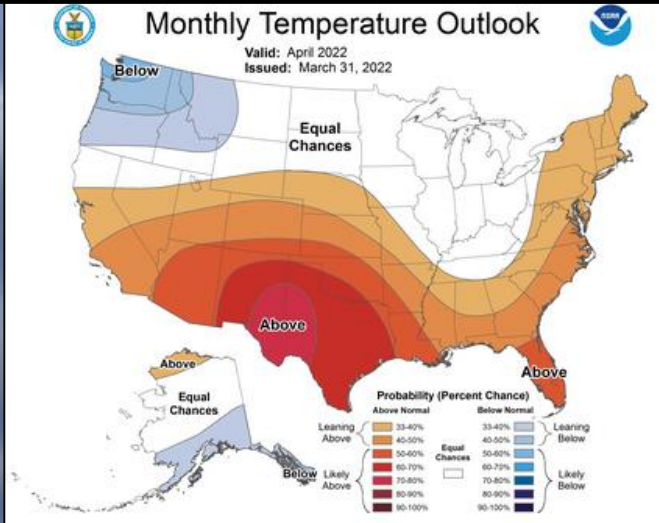
April Outlook

The latest outlook from the Climate Prediction Center currently favors above normal precipitation across the Ohio Valley, but generally has equal chances for the temperature outlook.

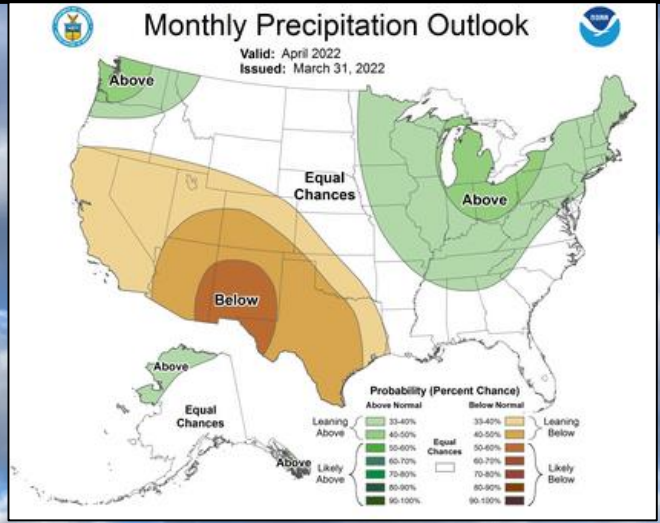
| Site | Normal Avg Temp (°F) | Normal High (°F) | Normal Low (°F) |
|------------------|----------------------|------------------|-----------------|
| Cincinnati (CVG) | 54.6 | 65.5 | 43.7 |
| Columbus (CMH) | 53.2 | 64.1 | 42.2 |
| Dayton (DAY) | 53.7 | 64.5 | 42.9 |

| Site | Normal Precipitation (in.) | Normal Snowfall (in.) |
|------------------|----------------------------|-----------------------|
| Cincinnati (CVG) | 4.53 | 0.4 |
| Columbus (CMH) | 3.85 | 0.5 |
| Dayton (DAY) | 4.46 | 0.4 |

Upcoming Temperature Outlook



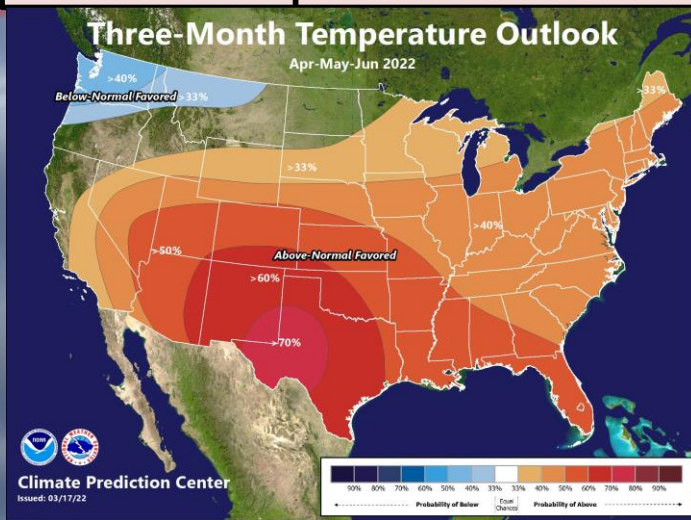
Upcoming Precipitation Outlook



April-June Outlook

La Niña continues across the Northern Hemisphere and is expected to persist into the summer (53% chance from June-August). Afterwards, there is a 40-50% chance of La Niña or ENSO-neutral occurring. The three month outlook from the Climate Prediction Center (CPC) between April through June remains consistent with a La Niña pattern, favoring above normal temperature values and above normal precipitation values.

Three-Month (AMJ) Temp. Outlook



Three-Month (AMJ) Precip. Outlook

