

EDITORIALS:

AFTER THE STORM

Hurricane Helene lashed the length and breadth of Brunswick county with all her fury Saturday as the eye of this tropical storm moved up the coast a few miles off the Cape Fear river bar.

In her wake was left destruction which may total several million dollars in value, for in addition to widespread damage to homes, buildings, utilities, roads, docks and piers there was loss to crops and to other timber that is almost impossible to estimate.

That there was no loss of life, nor even serious injury, reported in the wake of the storm is a miracle, and reflects great credit to the warning given to the approaching hurricane and to the energy and ingenuity with which the people made preparation to shield themselves against the storm.

The U. S. Weather Bureau provided information that made it possible to check the location and course of Helene as she headed toward the mainland, and radio and television stations that serve this area kept the public properly informed. The American Red Cross was at work long before the first winds were felt, and with Mrs. Phil King, Chairman of the Brunswick County Chapter, directing efforts throughout this period of emergency, shelter and food was provided for more than 2,000 persons in the school buildings of Brunswick county. The Highway Patrol and the Coast

Guard were joined by members of the Sheriff Department in clearing the beach areas before the storm struck; and here in Southport the force of city workmen rendered yeoman service before, during and after the storm.

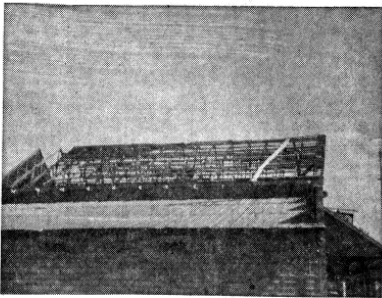
On duty throughout the period of emergency was the Brunswick County Civil Air Patrol, and their communications system provided an important service. The facilities and equipment at Sunny Point were made available when and where needed; and the State Highway Commission had men on duty during every hour of the emergency.

Thousands of persons share in the heavy loss that was sustained, each with his own peculiar problem. Perhaps the loss at the Danford Dairy, where fifty fine dairy cows were killed, was the most dramatic single blow of destruction; but damage from Hurricane Helene started at the South Carolina line in Brunswick county and never let up until she had ravaged our area all the way to the New Hanover county border.

There is much work to be done and a great burden of expense has been thrust upon our people; but already they have pitched into the task of clearing up the debris and making the necessary repairs. For life in Brunswick county must go on.

THE STATE PORT PILOT, S

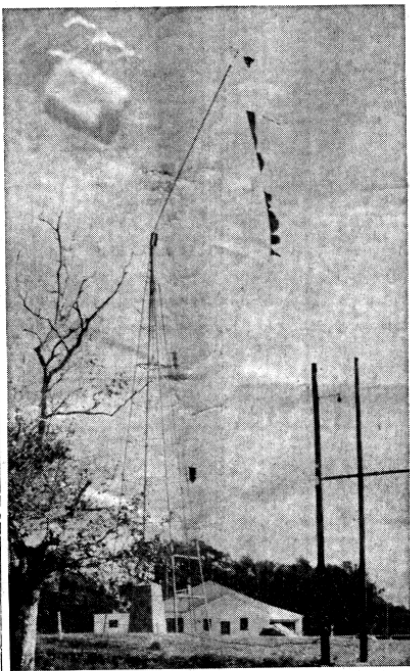
Store Damaged



ROOF—This is a picture of the top of the G. W. Kirby & Son Store at Supply, where the roof was completely destroyed. It since has been replaced, but the loss will run into the thousands of dollars, chiefly from water damage.

THE STATE PORT PILOT, SOUTHPORT, NORTH CAROLINA

Weather Tower



BENT—Some idea of the force of wind can be had from this view of the U. S. Weather Bureau display tower on the garrison. The upper section is bent to a precarious angle, and the two hurricane warning flags were completely torn up as they lashed in the wind.

PORT PILOT

The Pilot Covers
Brunswick County

In A Good Community

SDAY, OCTOBER 1, 1958

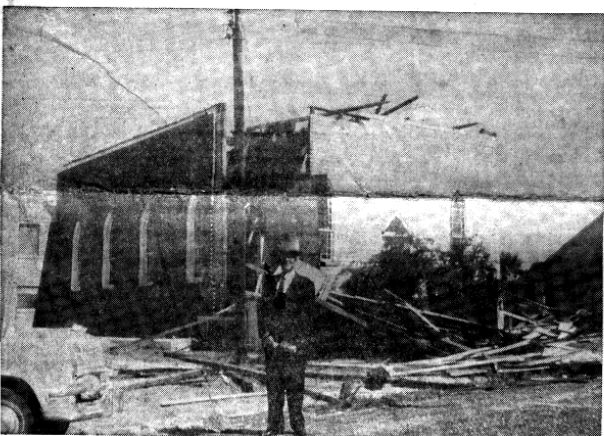
5c A COPY

PUBLISHED EVERY WEDNESDAY

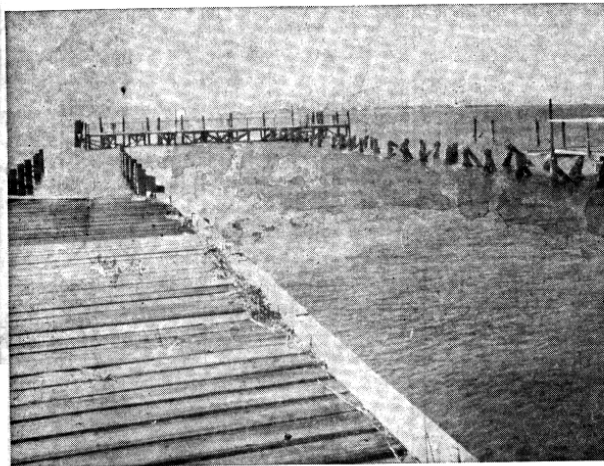
Hurricane Helene Leaves Trail Of Damage Through This County



DEBRIS—Distraction of trees was one of the chief sources of damage from Hurricane Helene. Streets of Southport were littered with trees and limbs. The above picture was taken in Franklin Square where the beautiful live oaks took a beating.



WRECK—This is St. James Methodist Church, where the steeple fell, leaving the front of the building a shambles. Henry Mitchell, one of the members, is in the foreground.



WATERFRONT—Damage on the waterfront was remarkably light. This photo shows a section of the municipal dock that was destroyed, but in the foreground is the launching ramp, which suffered no damage. (All Photos by A. E. Huntley.)

Governor Asks President To Declare Disaster Area

Damages totaling \$2,342,750 in Brunswick county were reported at a meeting of the Southeastern North Carolina Hurricane Rehabilitation and Planning Committee in Wilmington yesterday.

Following a tour of the affected area on Sunday, Governor Luther H. Hodges has requested President Dwight D. Eisenhower to designate the coastal section of North Carolina as a disaster area.

In line with this, Mayor E. B. Tomlinson, Jr., of Southport has wired the president urging this immediate action.

In compiling figures of loss, public utilities, damage to farm crops and to growing timber were not included.

Public officials of Brunswick county and its municipalities have attended a series of meetings since the storm for the purpose

of setting in motion machinery which may bring some measure of outside assistance in the big job of repairing damages and restoring normal services.

Members of the board of county commissioners held a special session here Monday for the purpose of helping round up figures to complete the damage picture for the county as a whole.

Citizens Of Southport And Brunswick Digging Out From Debris Left In Wake Of Violent Tropical Storm

NO INJURIES OR DEATHS REPORTED

Preparations Made Before Hand To Handle Emergency Situation And Paid Dividends

Hurricane Helene lashed Brunswick county from one end to the other Saturday and left in her wake hundreds of thousands of dollars worth of property damage.

There was no exaggerating the fury of the storm, but when it was all over it was discovered that the area had come out in much better shape than had been reported by several visiting news men, whose stories in the daily press had given the impression that everything was devastated. And since they had been here in person while the blow was at its worst, it was understandable why they had figured that nothing could stand in the face of such a storm.

The U. S. Weather Bureau has determined that the eye of the hurricane passed the coast of Brunswick county between Cape Fear and Prying Pan Lightship, for winds here were from the northwest, and out there from the southwest. That meant that most of Brunswick was lined up for the most violent winds produced by this tropical storm.

In contrast to Hurricane Hazel, practically all damage resulted from wind, and there were only scattered instances of complete destruction. On the other hand, very few buildings in the county escaped some damage and it is significant that it appeared to be no worse along the beaches than it was in other areas. As a matter of fact, Yaupon Beach and Tranquil Harbour escaped with very little loss.

There was not a single report of death or serious injury resulting from the storm, and this was attributed to the fact that several cooperating agencies had made preparations for the protection of life and limb.

Much of this work was done under the banner of the American Red Cross with Mrs. Sue King, Brunswick County Chapter Chairman, in charge. She had the full cooperation of School Superintendent John G. Long, who designated the schools as Red Cross Shelters and asked each principal to assume responsibility for their proper operation and for emergency feeding if and when needed. Almost without exception this plan worked well.

The Coast Guard, Highway Patrol and Sheriff's Department warned beach residents of the impending danger, and television and radio stations serving the area kept the latest advisories of the U. S. Weather Bureau constantly before the people.

The Brunswick County CAP helped to set up a communications network. Their facilities were augmented by the communications equipment of the State Highway Patrol, the State Highway Commission, HAM operators and the Brunswick REA. Because of this no emergency developed due to any particular section being without some means

Continued On Page Four

Tide Table

Following is the tide table for Southport during the next week. These hours are approximately correct and were furnished The State Port Pilot through the courtesy of the Cape Fear Pilot's Association.

High Tide	Low Tide
Thursday, October 2,	
10:18 A. M.	4:05 A. M.
10:29 P. M.	4:35 P. M.
Friday, October 3,	
10:38 A. M.	4:44 A. M.
11:10 P. M.	5:18 P. M.
Saturday, October 4,	
11:44 A. M.	5:28 A. M.
12:00 P. M.	6:06 P. M.
Sunday, October 5,	
12:38 A. M.	6:20 A. M.
0:00 P. M.	7:03 P. M.
Monday, October 6,	
1:01 A. M.	7:20 A. M.
1:30 P. M.	8:05 P. M.
Tuesday, October 7,	
2:10 A. M.	8:29 A. M.
2:43 P. M.	9:07 P. M.
Wednesday, October 8,	
3:56 A. M.	9:56 A. M.
4:24 P. M.	10:23 P. M.