

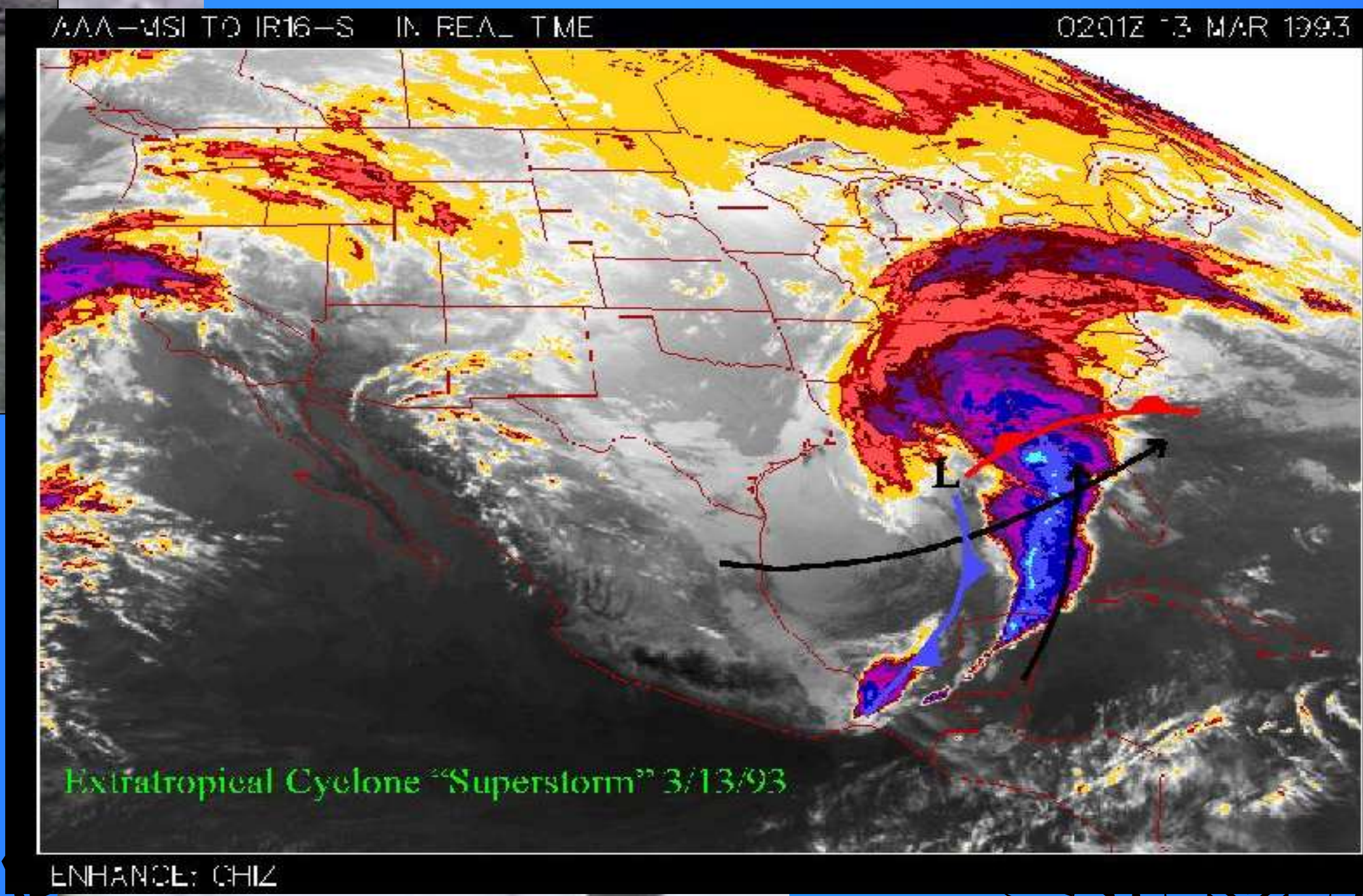
Storm of the Century

March 12-14, 1993

When the computer models first detected the storm five days in advance, it was dismissed by some as an error in the model because of its intensity. But when the models all started to agree, meteorologists began to understand what a monster they had in front of them. The "Storm of the Century" devastated the eastern third of the United States with snow and freezing temperatures. This powerful system would have been a Category 2 on the Saffir-Simpson Hurricane intensity scale.

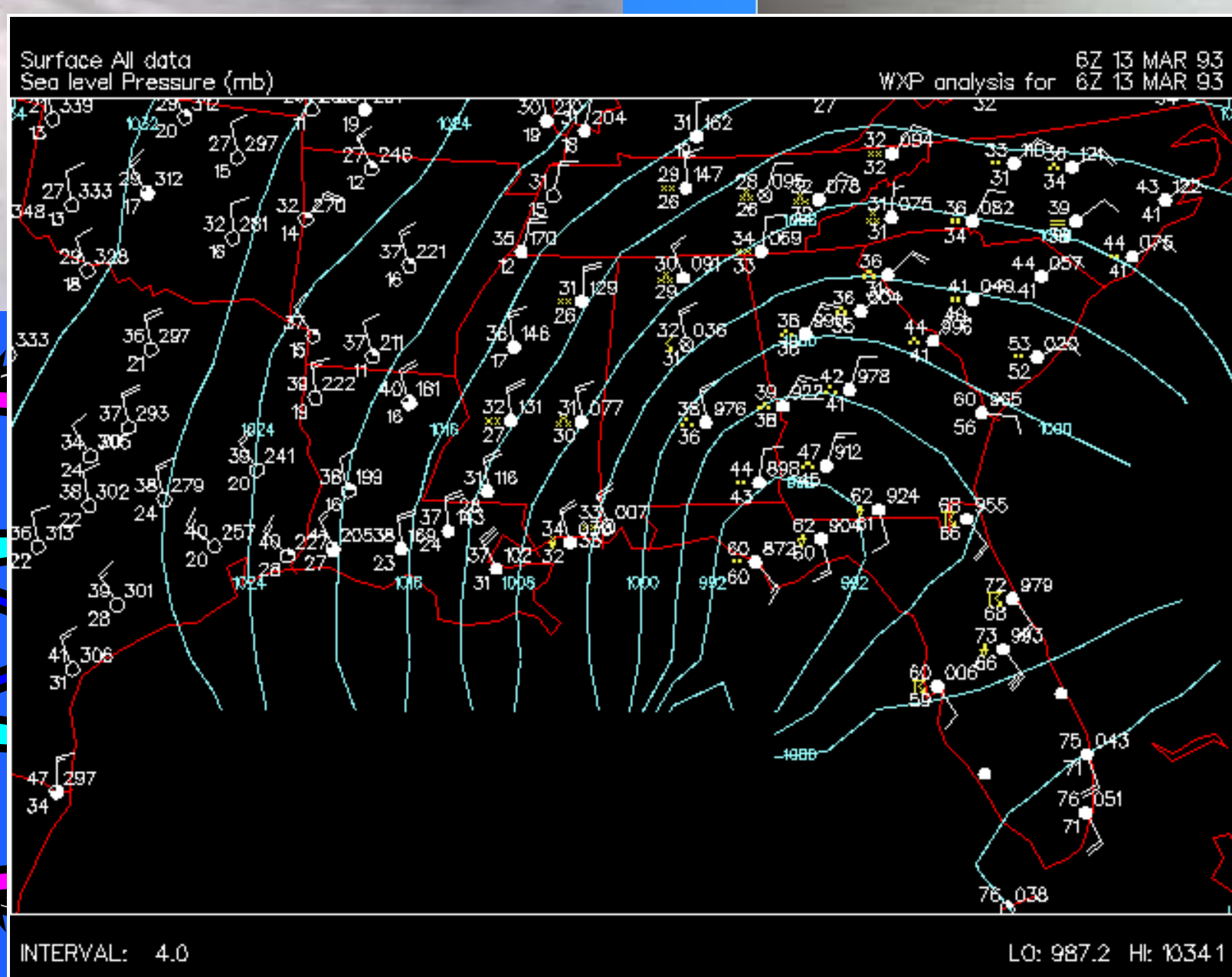
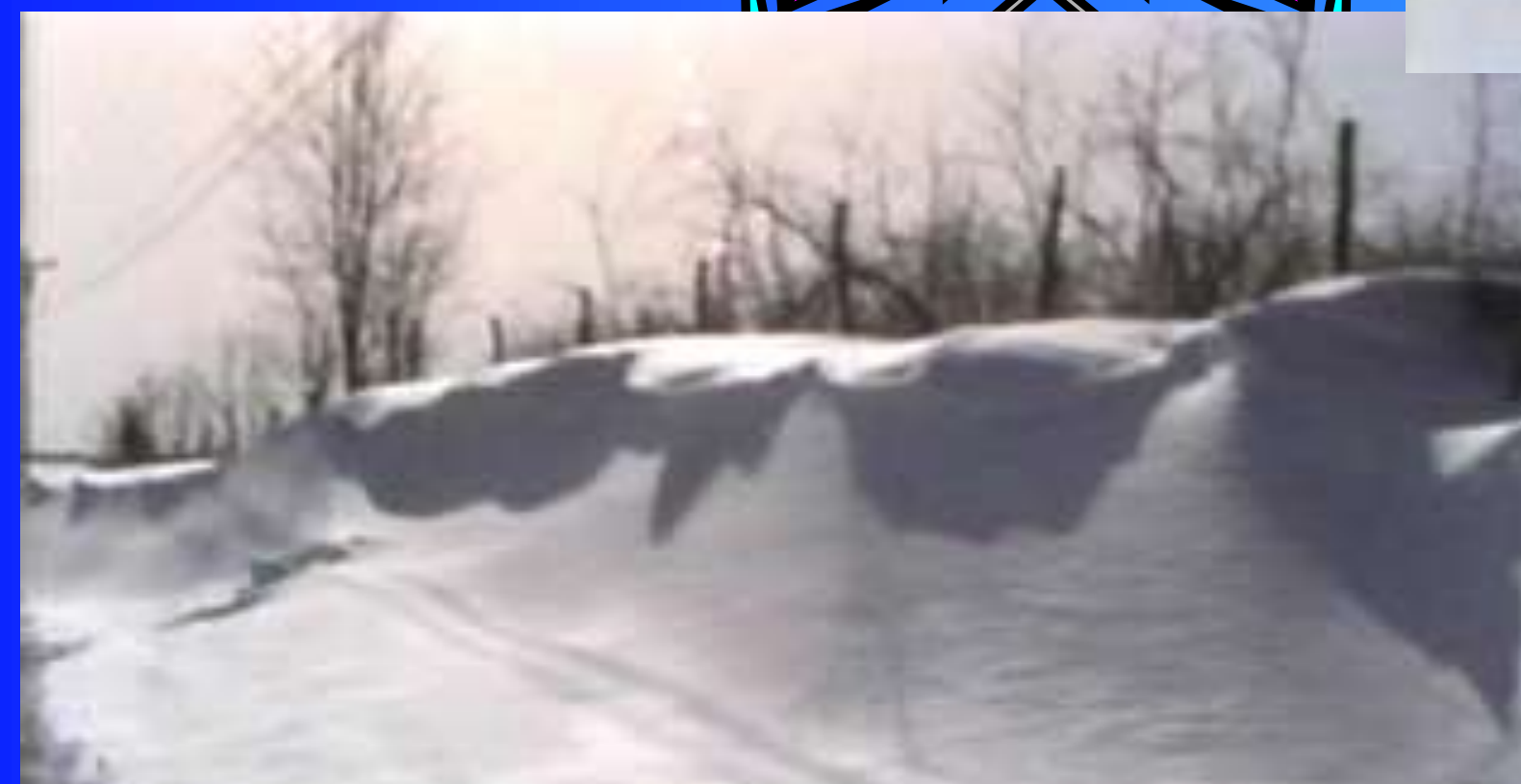
The low pressure system formed in the Gulf of Mexico on the 12th and pushed across southern Alabama and Georgia, before moving up the East Coast. The storm system that brought us record snowfalls, pounded Florida with severe thunderstorms and more than 50 tornadoes.

Up to 17" of snow fell across Northern Alabama, virtually shutting down the whole area. Many residents were without electricity for days. Meanwhile the mercury plunged as low as 12 degrees over most of the area.



Measured snowfall during March 12-14, 1993

Athens	7.0"	Mt. Mitchell, NC	50"
Belle Mina	7.0"	Muscle Shoals	4.6"
Birmingham	13.0"	Saint Bernard	4.8"
Chattanooga	20.0"	Scottsboro	12.0"
Guntersville	8.0"	Valley Head	17.7"
Huntsville	7.3"	Winchester	10.5"
Moulton	8.3"		



century
1993