

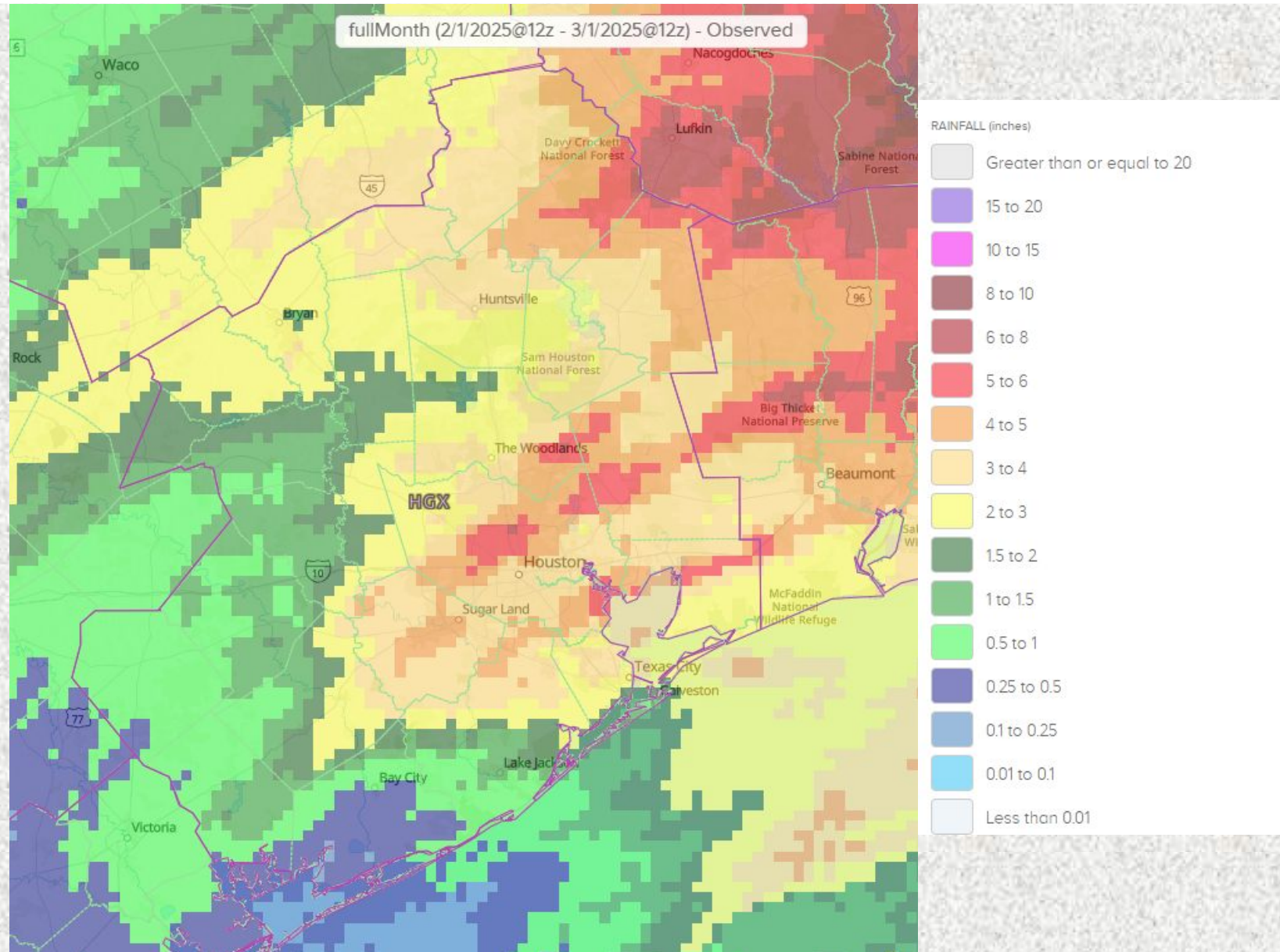
NWS Houston/Galveston Monthly Hydrologic Report February 2025

Produced by: Cameron Batiste

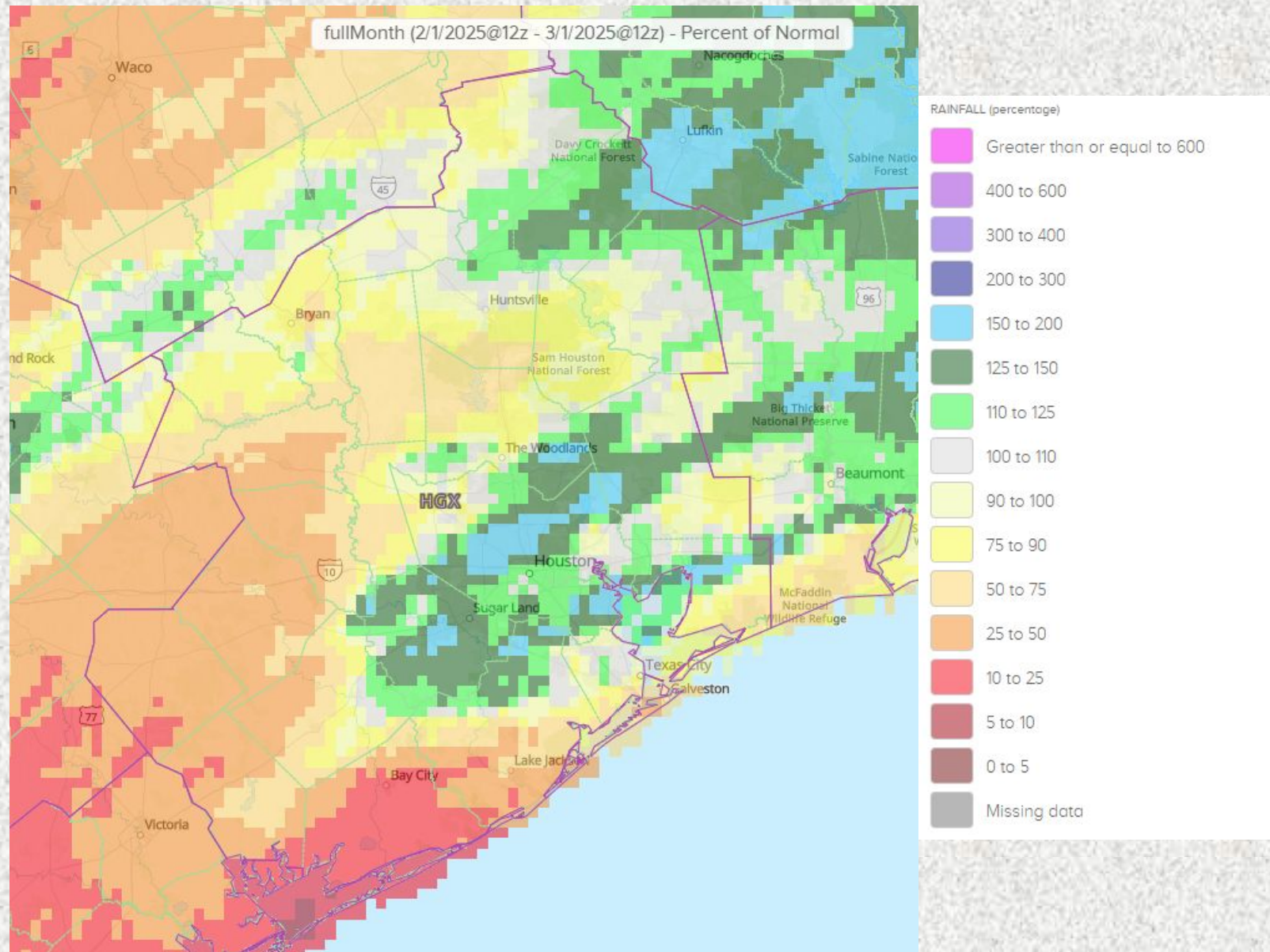
Date: 3/3/2025

Majority of the days in February were dry, but the rainy days were fairly rainy with about two days where there were rainfall totals of 1.0+”. Areas generally east of the Brazos River received the most rain throughout the month, which leaves the remaining area in drought conditions. Moderate drought conditions persist for areas generally west of the Brazos River and a severe drought for portions of Jackson/Wharton Counties.

Monthly Precipitation

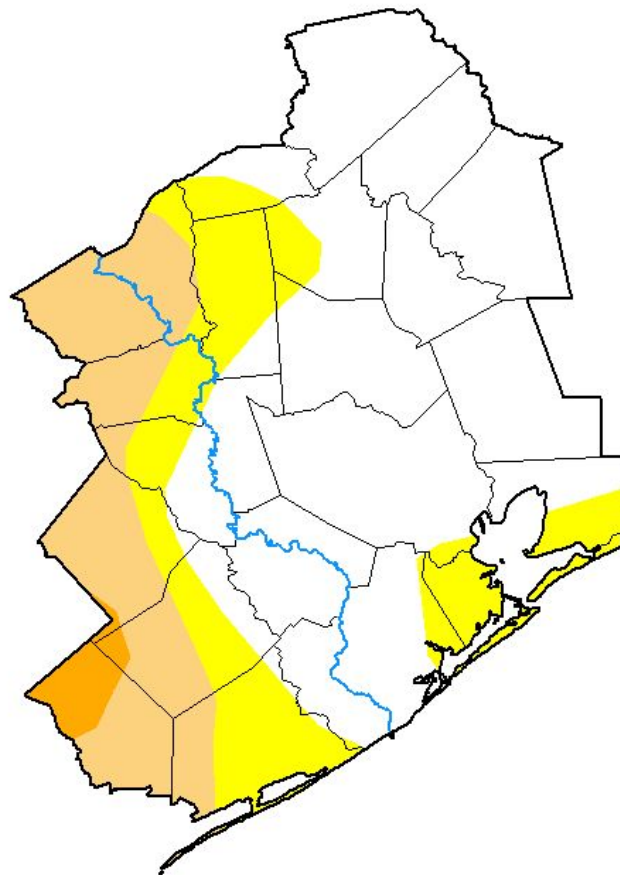


Monthly Percent of Normal Precipitation



U.S. Drought Monitor

U.S. Drought Monitor Houston/Galveston, TX WFO



February 25, 2025

(Released Thursday, Feb. 27, 2025)

Valid 7 a.m. EST

Drought Conditions (Percent Area)

	None	D0-D4	D1-D4	D2-D4	D3-D4	D4
Current	61.02	38.98	19.76	2.11	0.00	0.00
Last Week 02-18-2025	60.60	39.40	19.13	0.00	0.00	0.00
3 Months Ago 11-26-2024	5.61	94.39	35.73	1.08	0.00	0.00
Start of Calendar Year 01-07-2025	28.59	71.41	37.60	0.00	0.00	0.00
Start of Water Year 10-01-2024	10.34	89.66	5.13	0.00	0.00	0.00
One Year Ago 02-27-2024	100.00	0.00	0.00	0.00	0.00	0.00

Intensity:

- None
- D0 Abnormally Dry
- D1 Moderate Drought
- D2 Severe Drought
- D3 Extreme Drought
- D4 Exceptional Drought

The Drought Monitor focuses on broad-scale conditions. Local conditions may vary. For more information on the Drought Monitor, go to <https://droughtmonitor.unl.edu/About.aspx>

Author:

Brian Fuchs
National Drought Mitigation Center

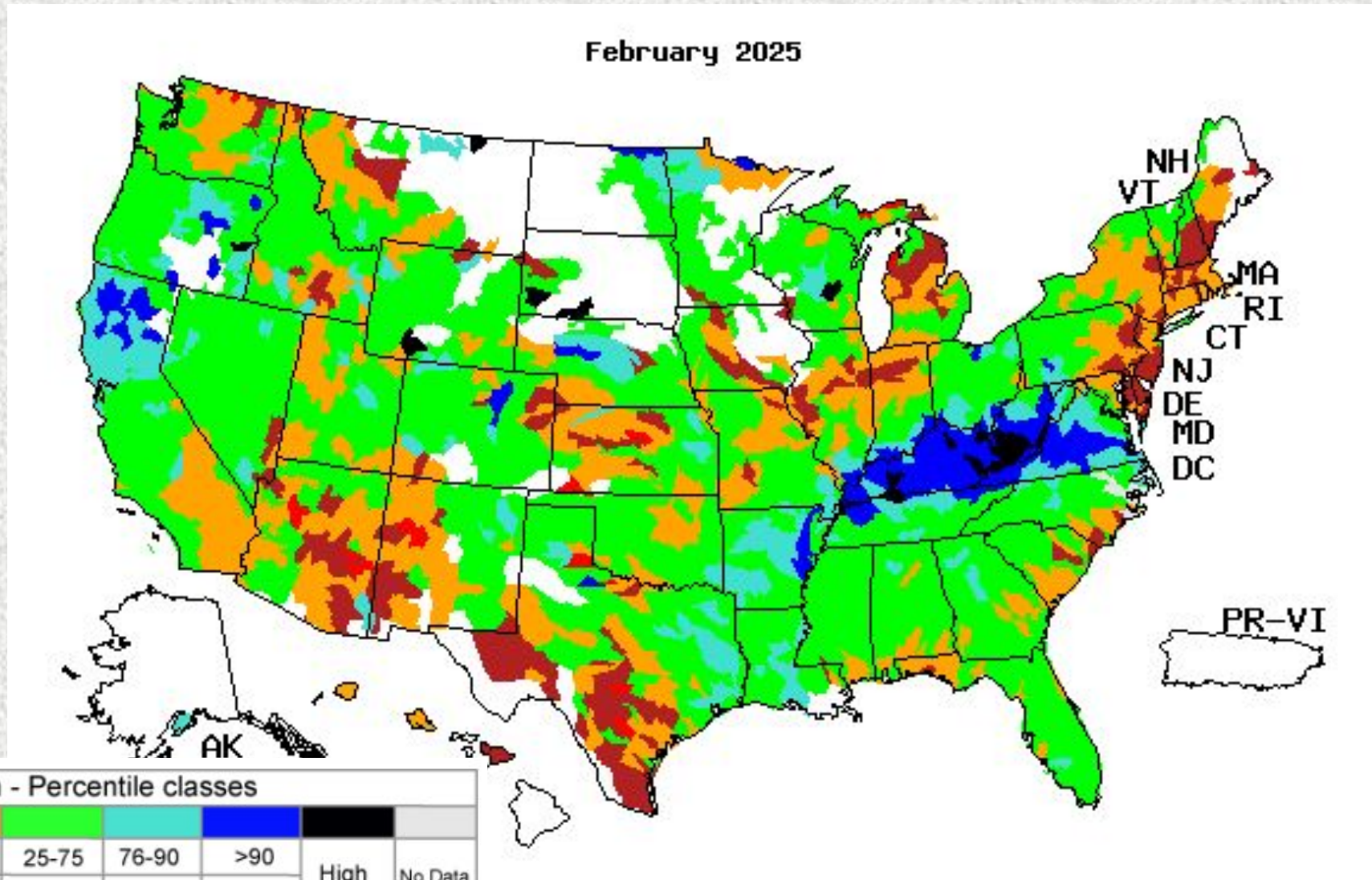


droughtmonitor.unl.edu

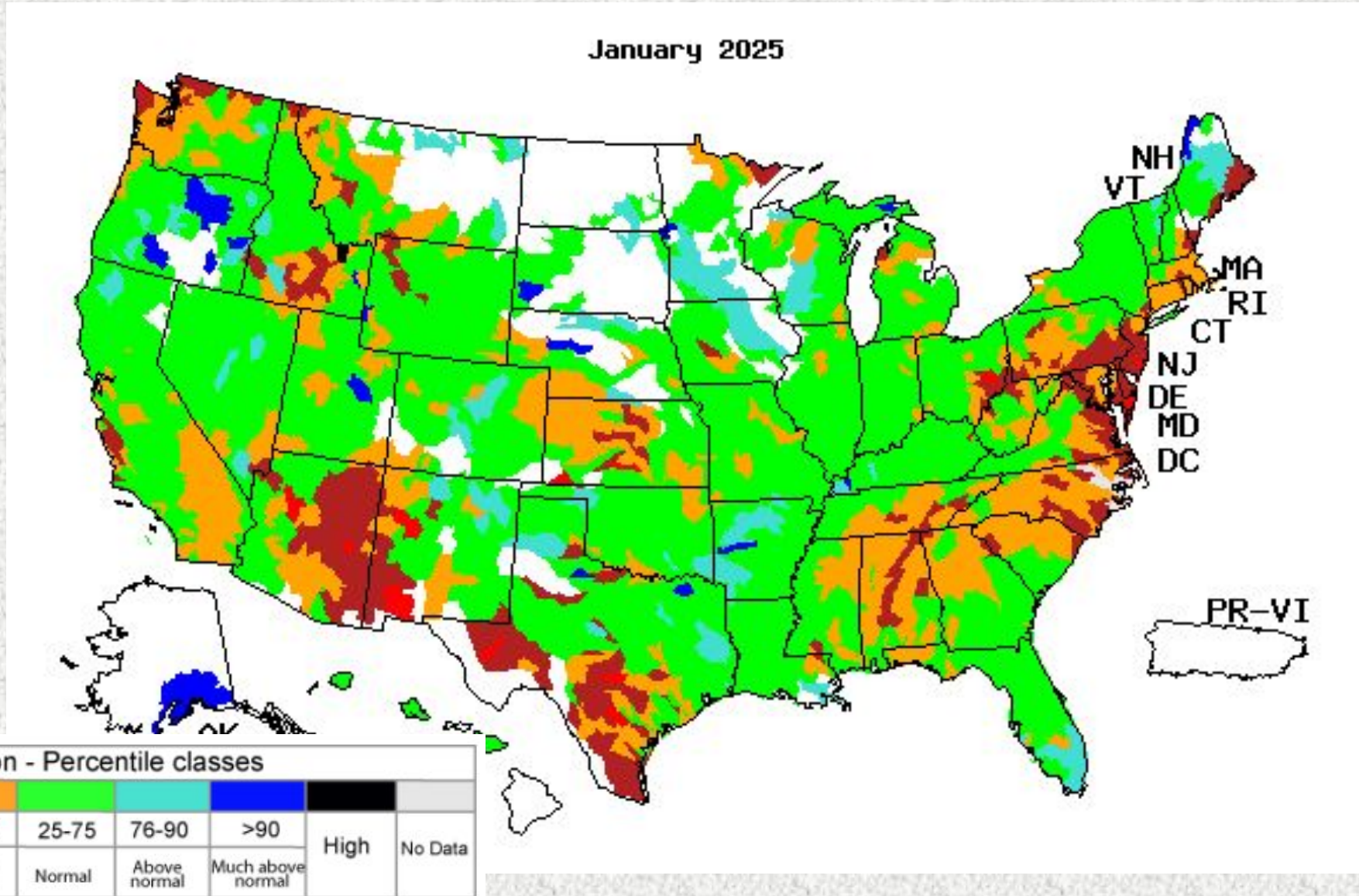
River Flooding

River and Station	Flood Stage (feet)	Crest Stage (feet)	Crest Date
None			

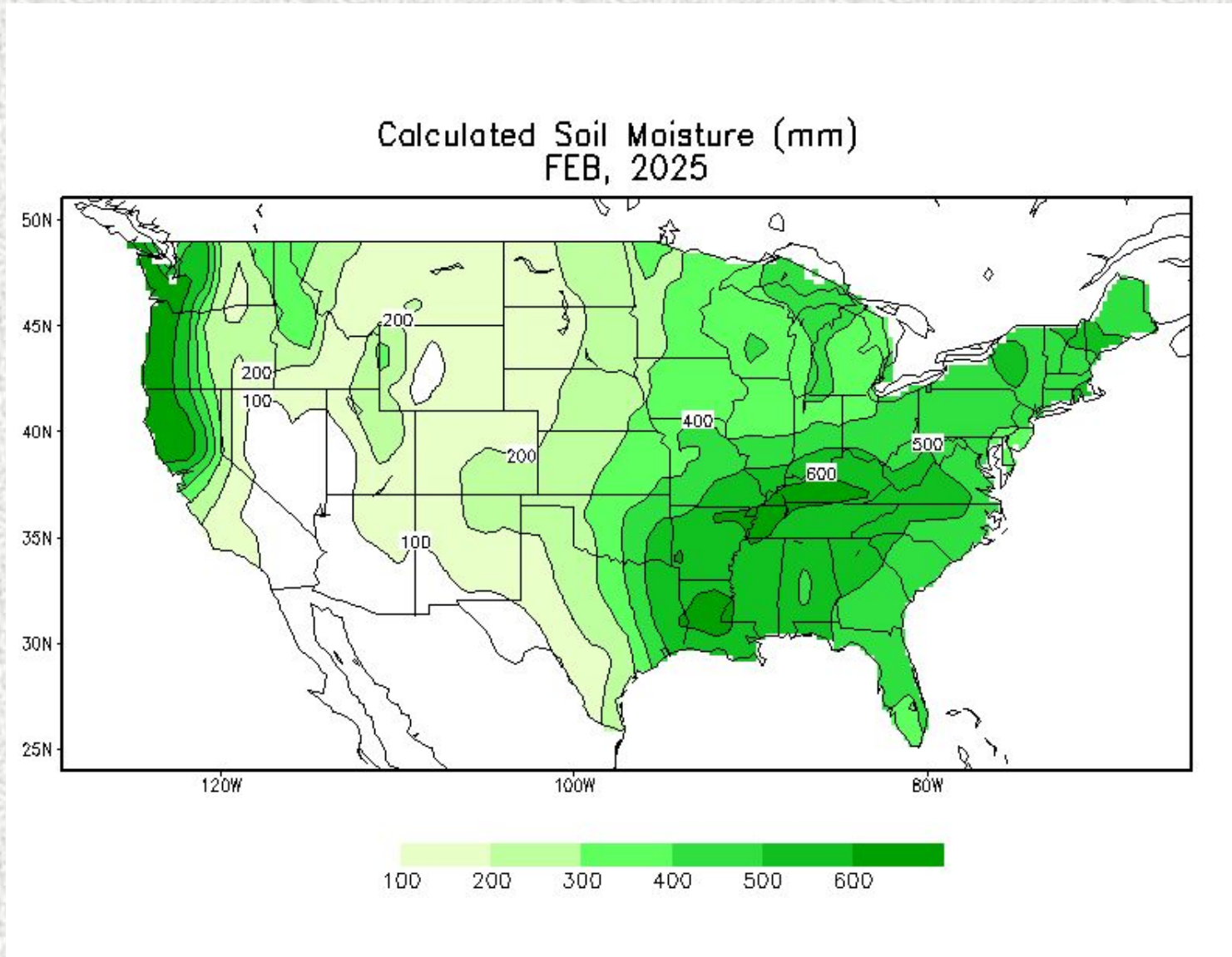
Monthly Average Streamflow



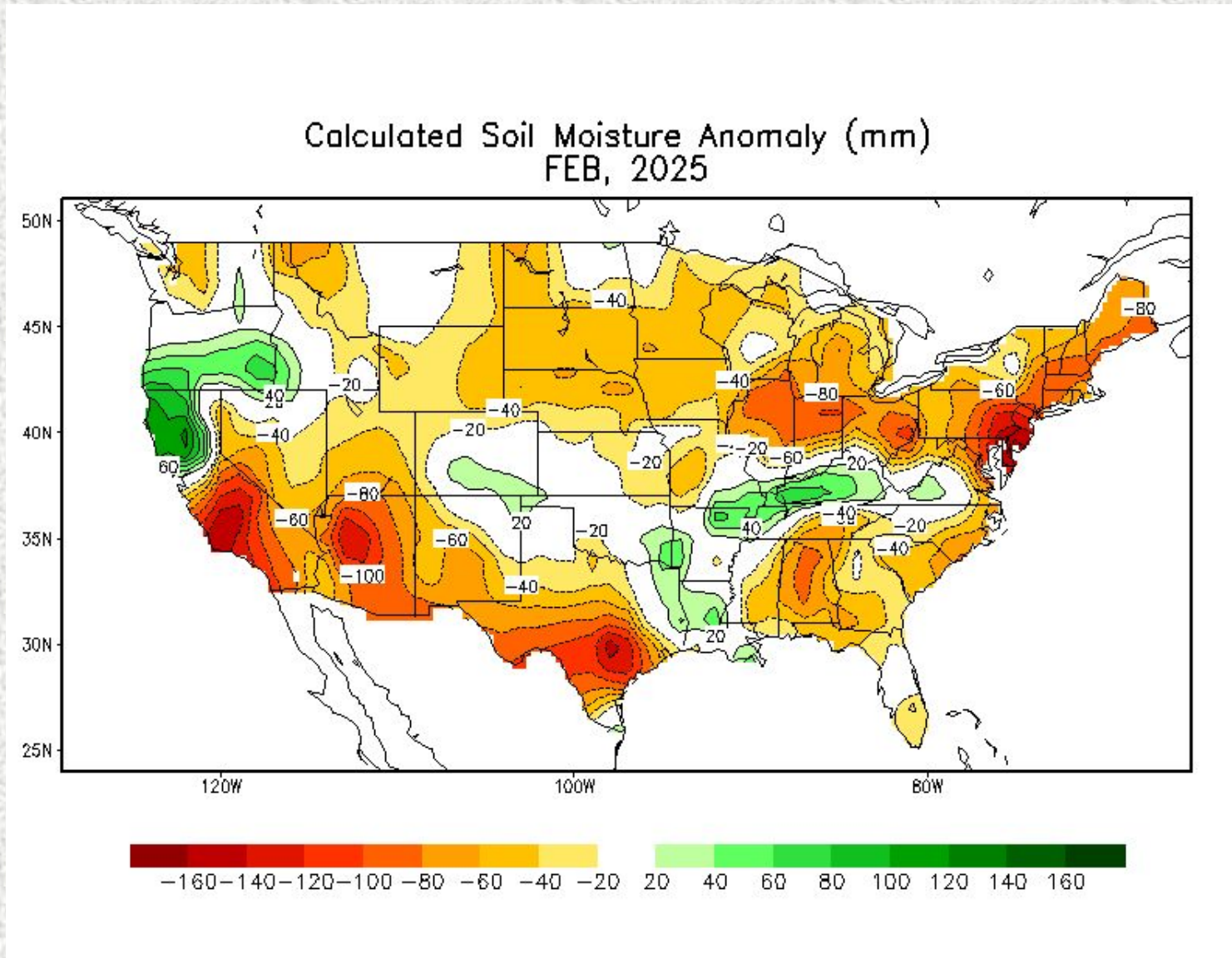
Previous Monthly Average Streamflow



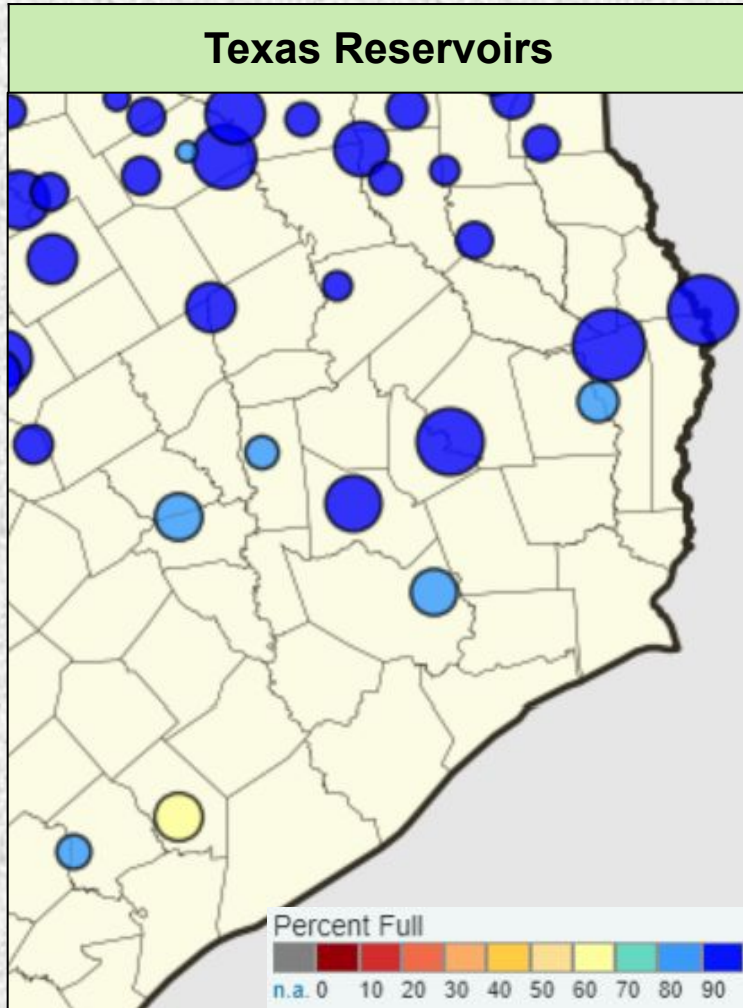
Soil Moisture



Soil Moisture Anomaly



Reservoir Status



Reservoir	Percent Full Conservation Storage
Houston County Lake	100.0%
Lake Livingston	100.0%
Lake Conroe	100.0%
Lake Houston	87.9%
Gibbons Creek Reservoir	89.1%
Lake Somerville	85.8%
Lake Texana	68.3%

Data added on: March 3, 2025 at 5:00 am CST

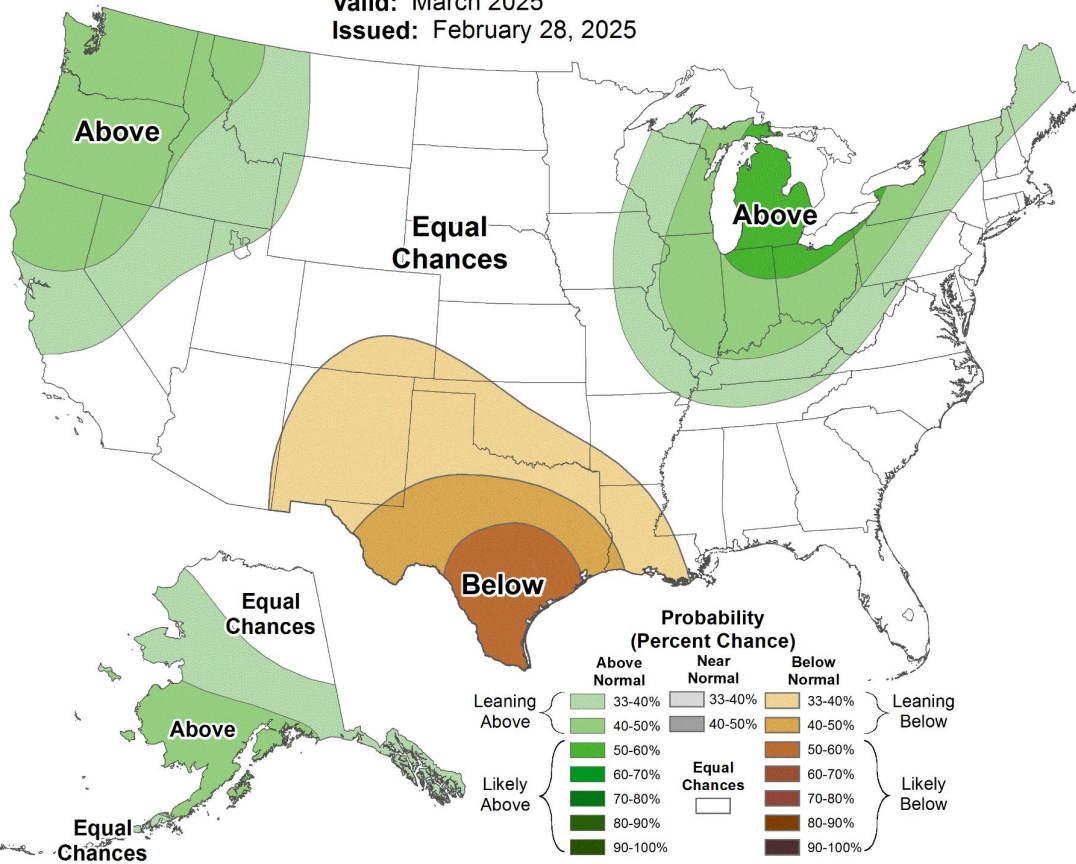
Precipitation Outlooks



Monthly Precipitation Outlook



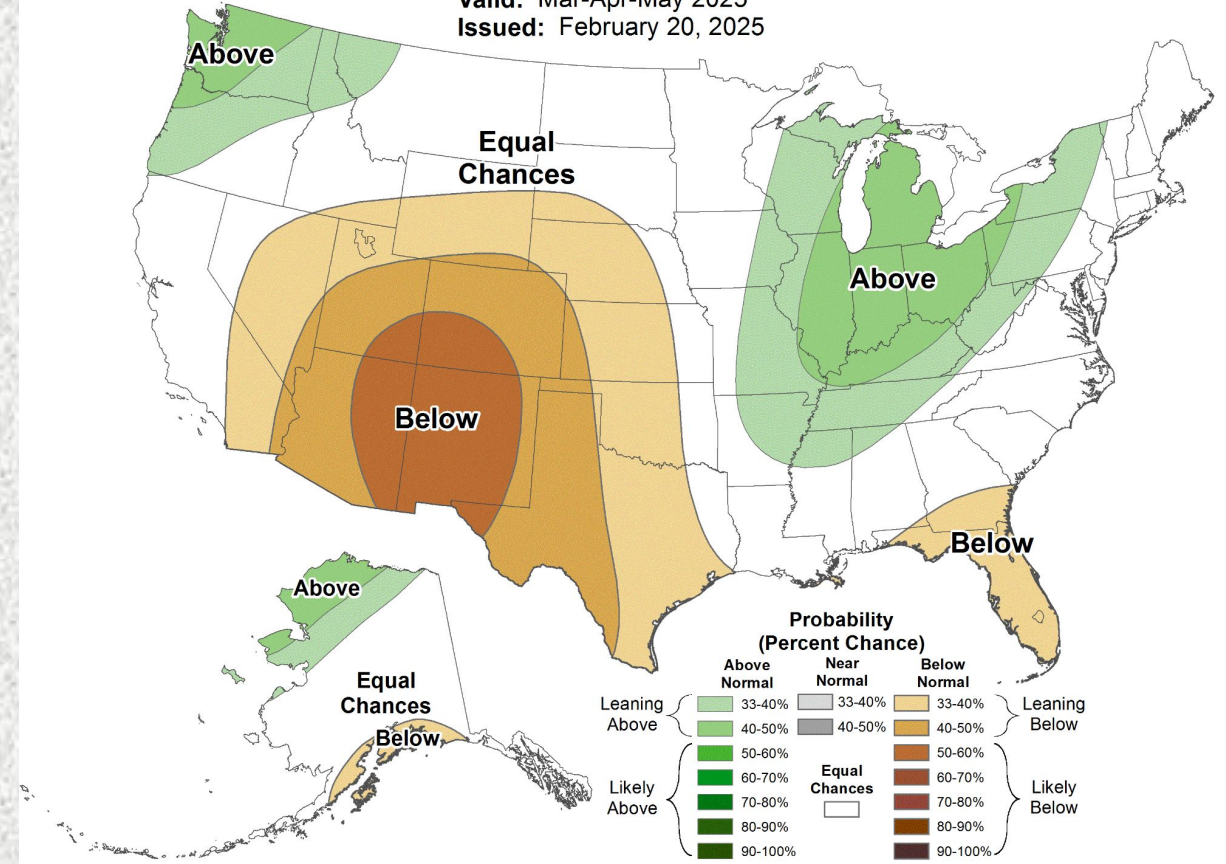
Valid: March 2025
 Issued: February 28, 2025



Seasonal Precipitation Outlook



Valid: Mar-Apr-May 2025
 Issued: February 20, 2025



Flood Products Issued

Product	Number Issued
Flash Flood Watch (FFA)	0
Flash Flood Warning (FFW)	0
Flash Flood Statement (FFS)	0
Areal Flood Warning	0
River Flood Warnings (FLW)	0
River Flood Statements	0
Flood Advisories (FLS)	2 (ETN: 004-005)
Probabilistic Hydrologic Outlook (ESF)	6