

NWS Houston/Galveston Monthly Hydrologic Report October 2022

Produced by: Cameron Batiste

Date: 11/07/2022

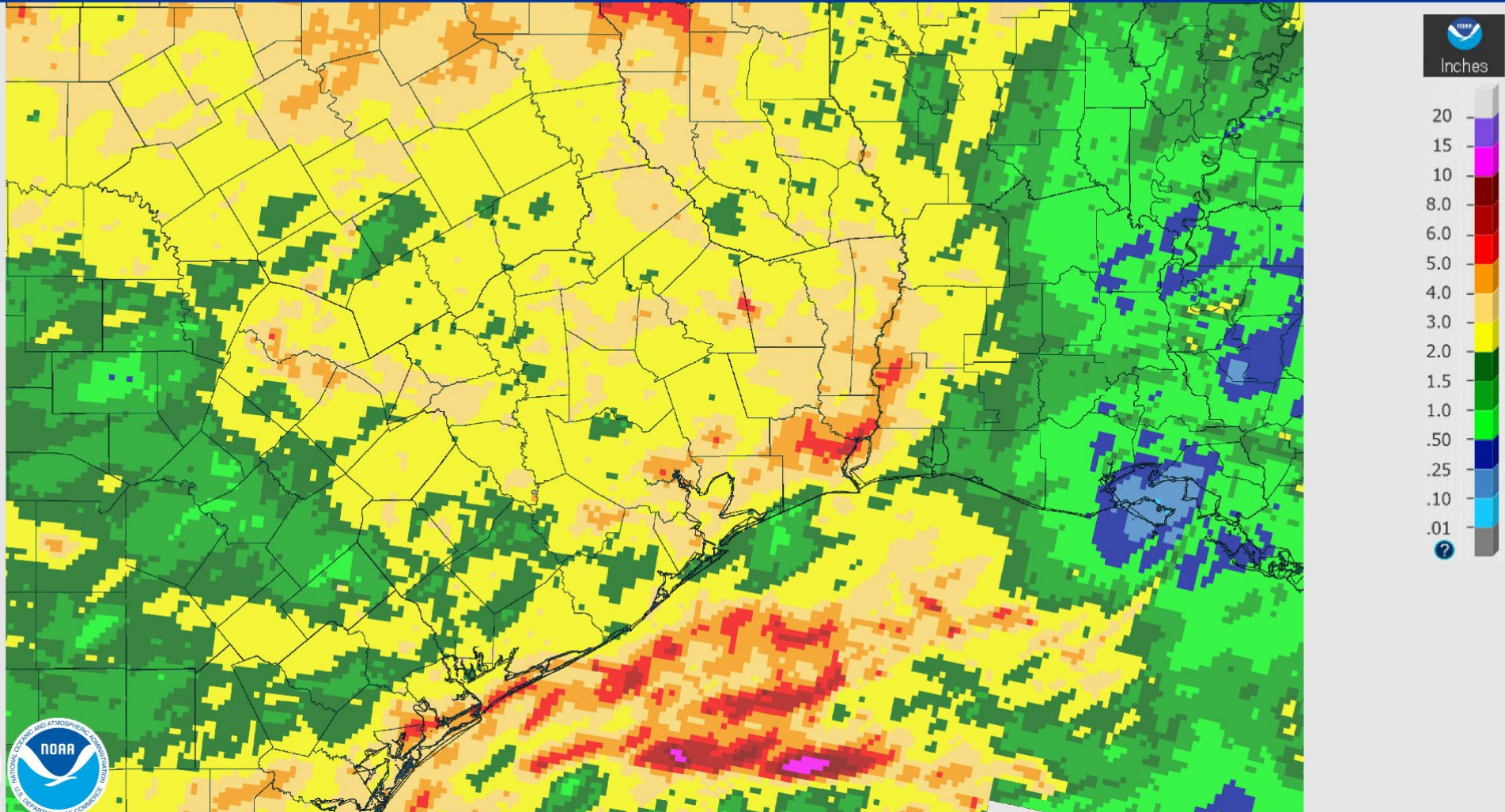
October was another abnormally dry month with the majority of the month remaining dry due to constant influence of dry air following cold fronts. The first three weeks of the month featured nearly zero precipitation totals and if it weren't for the coastal trough late in the month, then rainfall totals would've been less than an inch for many locations across the region. The vast majority of the rainfall for the month occurred on the 28th.

Monthly Precipitation

October 01, 2022 Monthly Observed Precipitation

Created on: November 01, 2022 - 20:19 UTC

Valid on: November 01, 2022 12:00 UTC

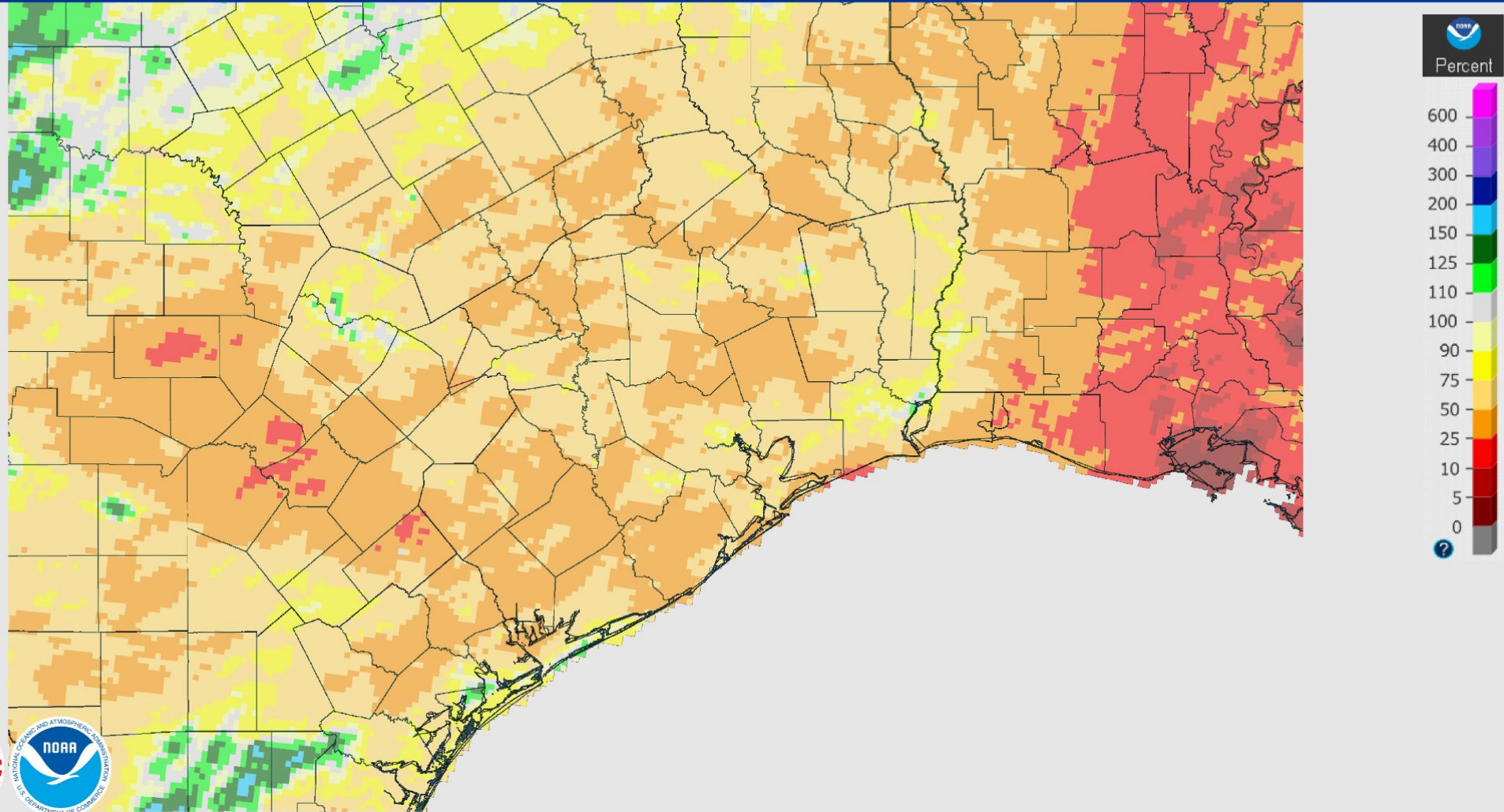


Monthly Percent of Normal Precipitation

October 01, 2022 Monthly Percent Precipitation

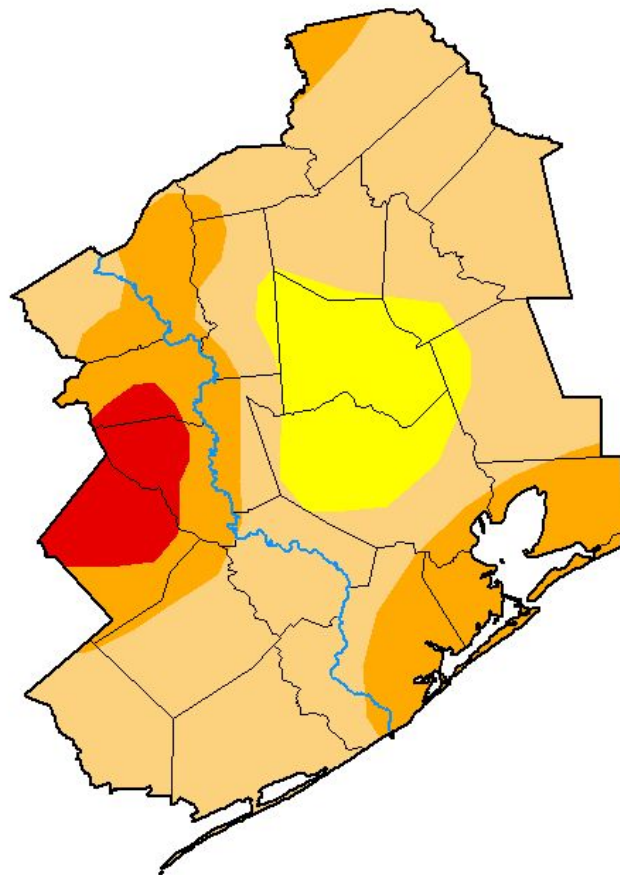
Created on: November 01, 2022 - 20:24 UTC

Valid on: November 01, 2022 12:00 UTC



U.S. Drought Monitor

U.S. Drought Monitor Houston/Galveston, TX WFO



October 25, 2022
(Released Thursday, Oct. 27, 2022)
Valid 8 a.m. EDT

Drought Conditions (Percent Area)

	None	D0-D4	D1-D4	D2-D4	D3-D4	D4
Current	0.00	100.00	87.55	28.19	5.76	0.00
Last Week 10-18-2022	0.00	100.00	67.80	22.20	3.79	0.00
3 Months Ago 07-26-2022	0.00	100.00	100.00	87.90	50.58	2.04
Start of Calendar Year 01-04-2022	6.94	93.06	46.95	3.61	0.00	0.00
Start of Water Year 09-27-2022	32.19	67.81	21.97	4.76	0.83	0.00
One Year Ago 10-26-2021	86.34	13.66	3.90	0.00	0.00	0.00

Intensity:



The Drought Monitor focuses on broad-scale conditions. Local conditions may vary. For more information on the Drought Monitor, go to <https://droughtmonitor.unl.edu/About.aspx>

Author:

Adam Hartman
NOAA/NWS/NCEP/CPC



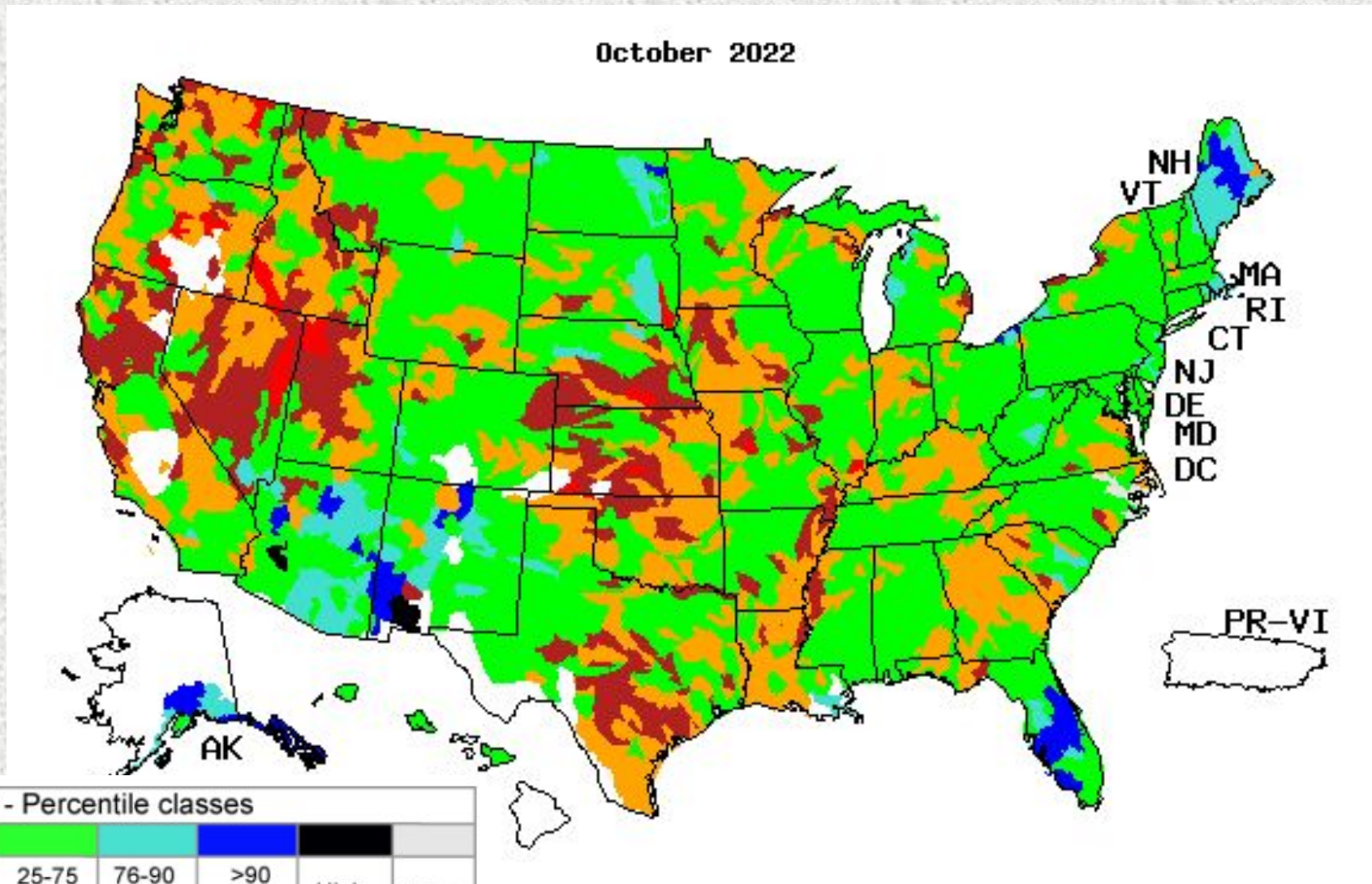
droughtmonitor.unl.edu

River Flooding

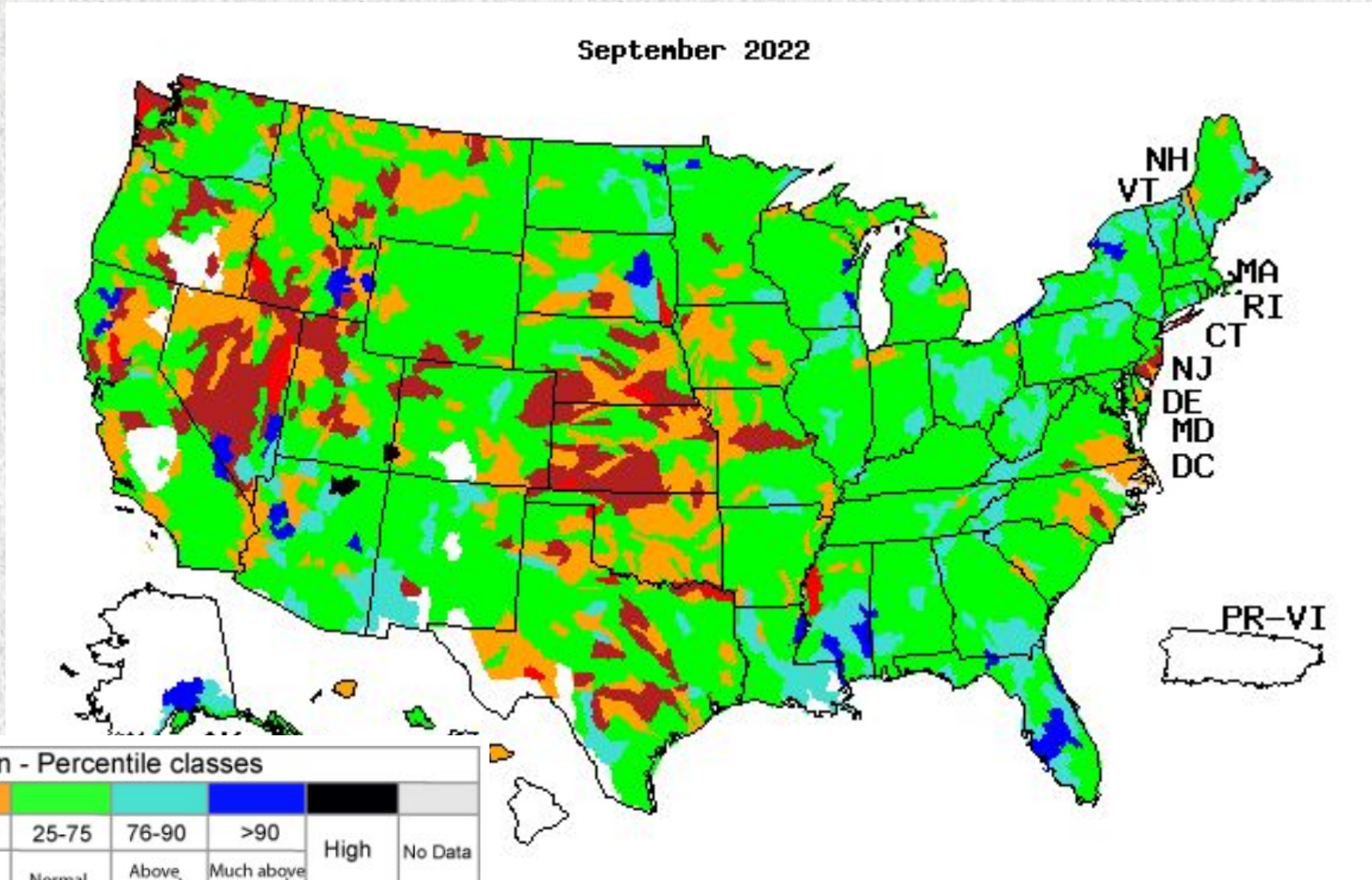
River and Station	Flood Stage (feet)	Crest Stage (feet)	Crest Date
None			

Monthly Average Streamflow

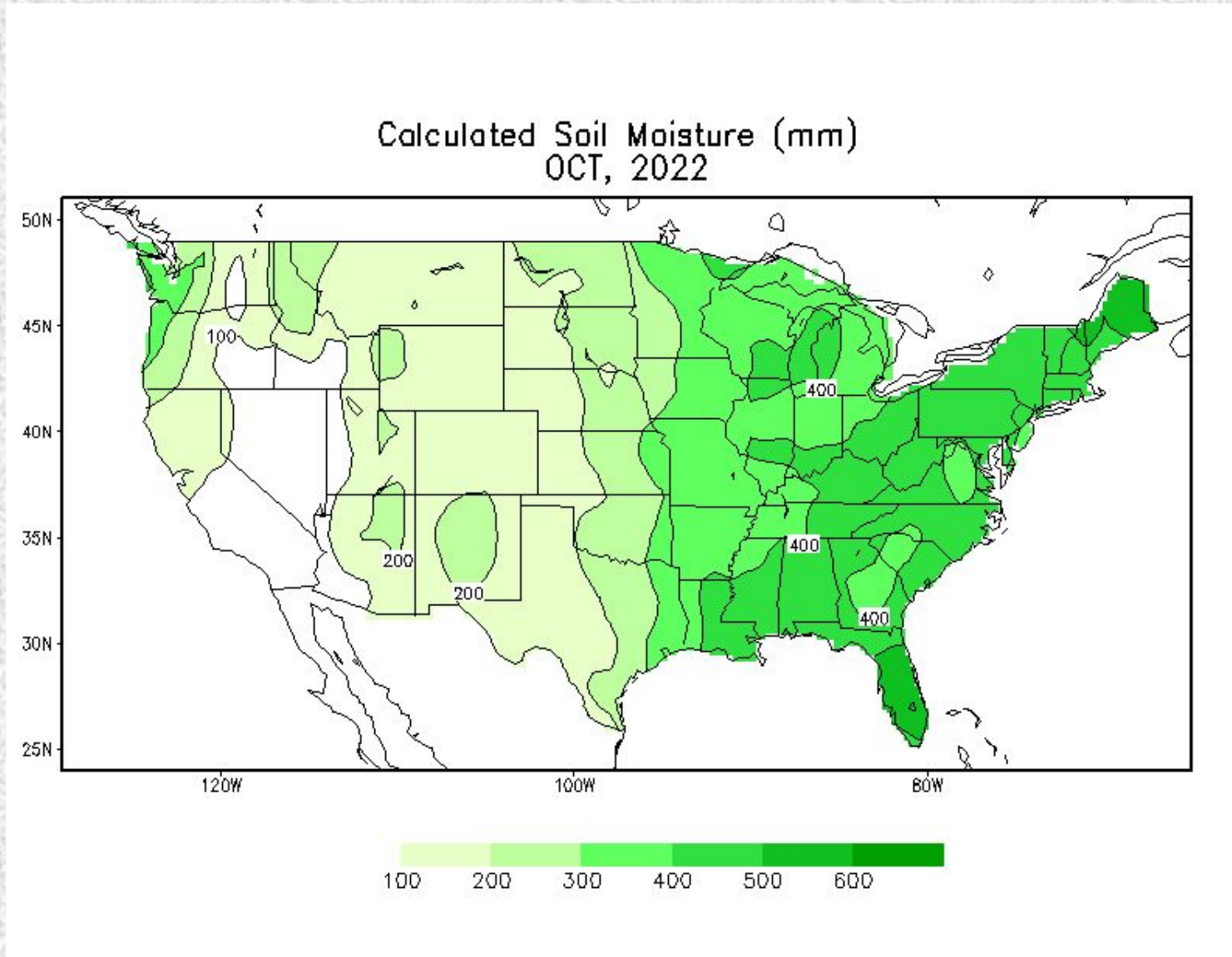
October 2022



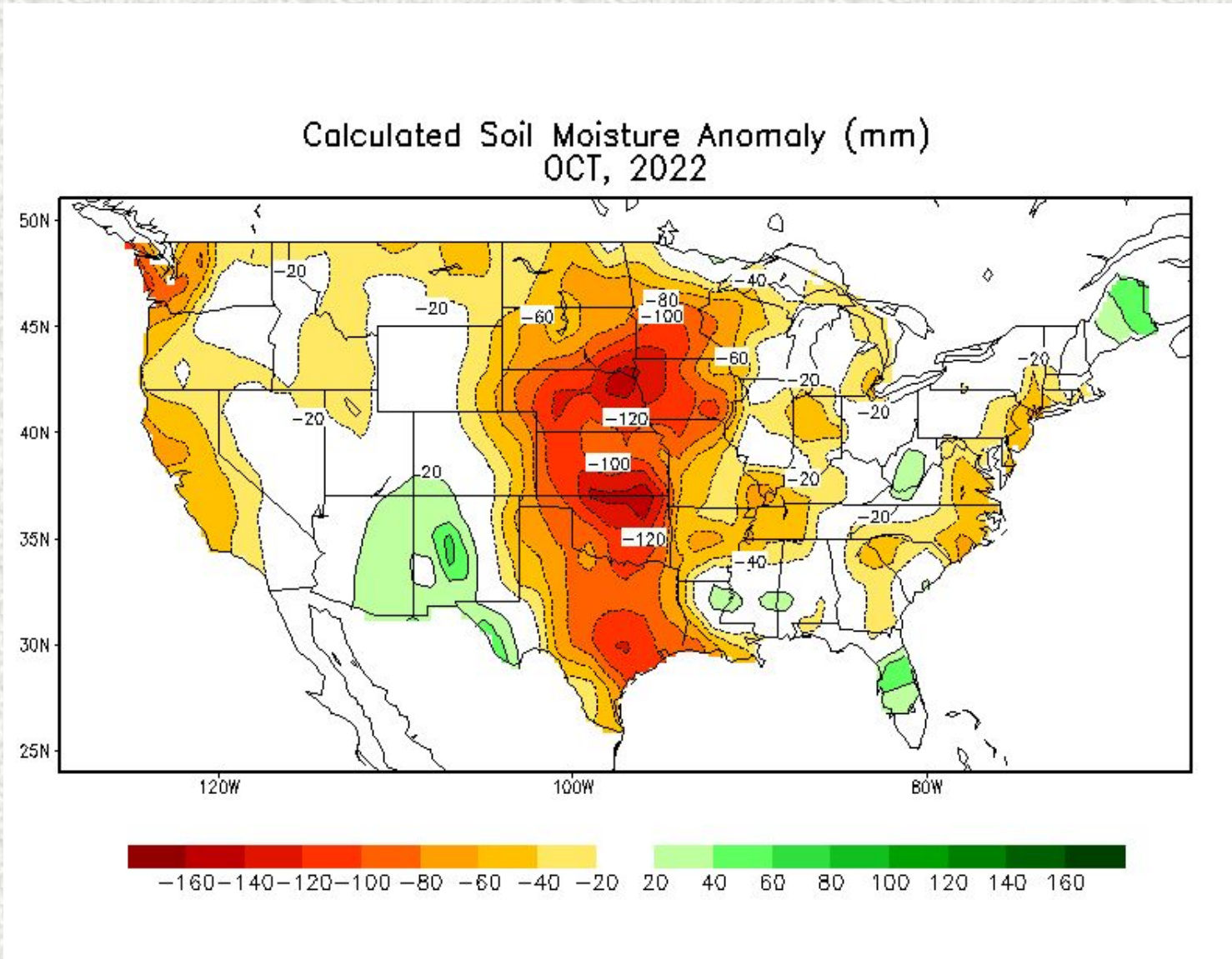
Previous Monthly Average Streamflow



Soil Moisture



Soil Moisture Anomaly



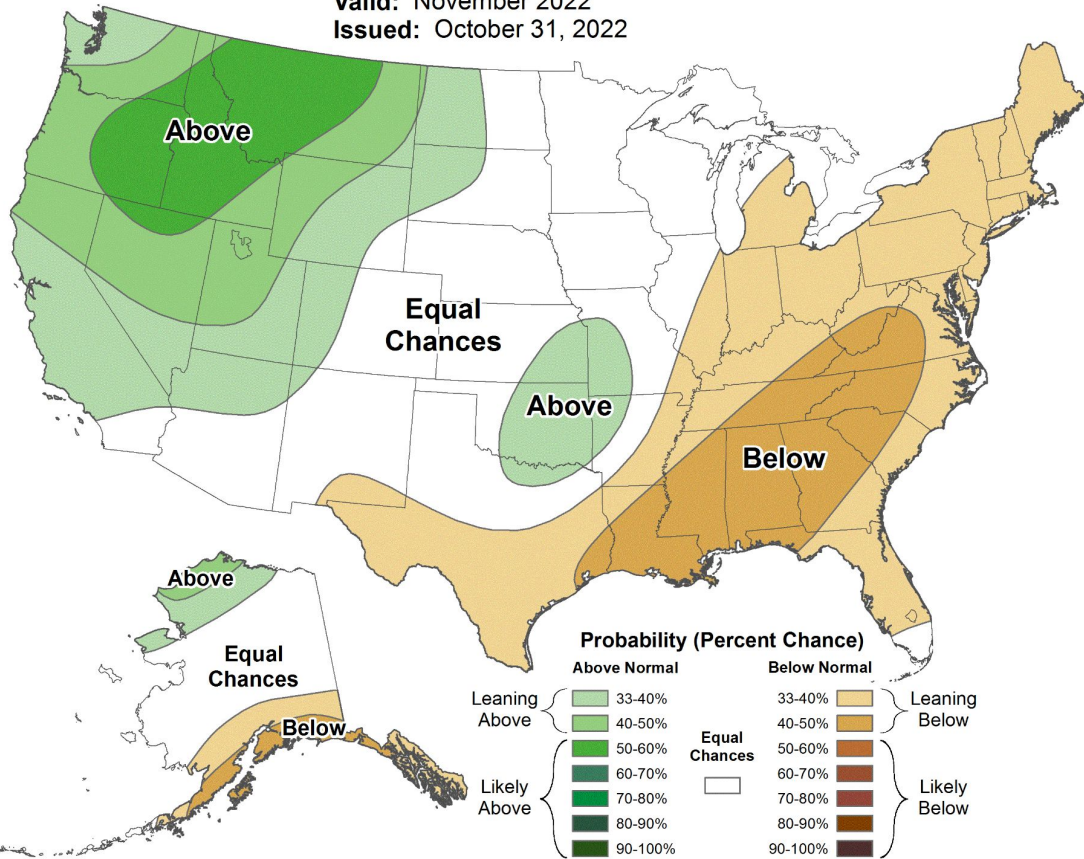
Precipitation Outlooks



Monthly Precipitation Outlook



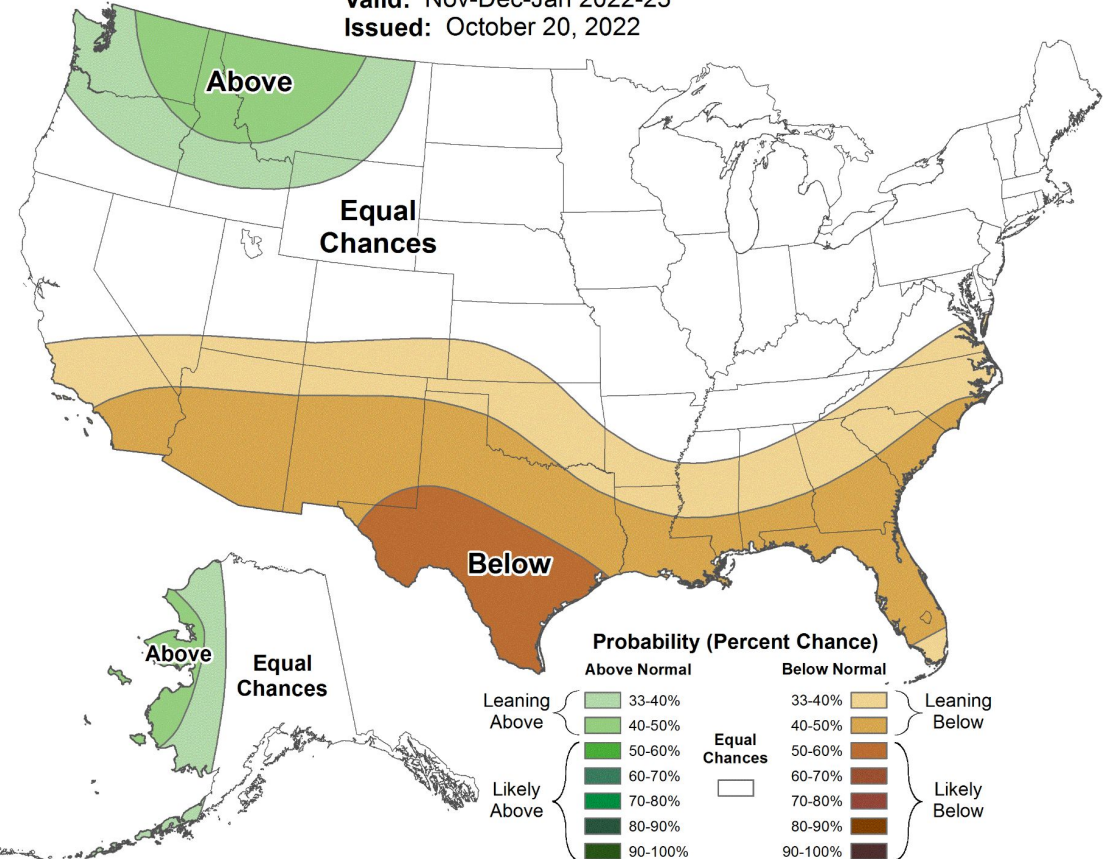
Valid: November 2022
 Issued: October 31, 2022



Seasonal Precipitation Outlook



Valid: Nov-Dec-Jan 2022-23
 Issued: October 20, 2022



Flood Products Issued

Product	Number Issued
Flash Flood Watch (FFA)	0
Flash Flood Warning (FFW)	0
Flash Flood Statement (FFS)	0
Areal Flood Warning	0
River Flood Warnings	0
River Flood Statements	0
Flood Advisories (FLS)	2 (ETN: 079-080)
Probabilistic Hydrologic Outlook (ESF)	6