



# HONOLULU FIRE DEPARTMENT

## AVIATION PROGRAM OVERVIEW



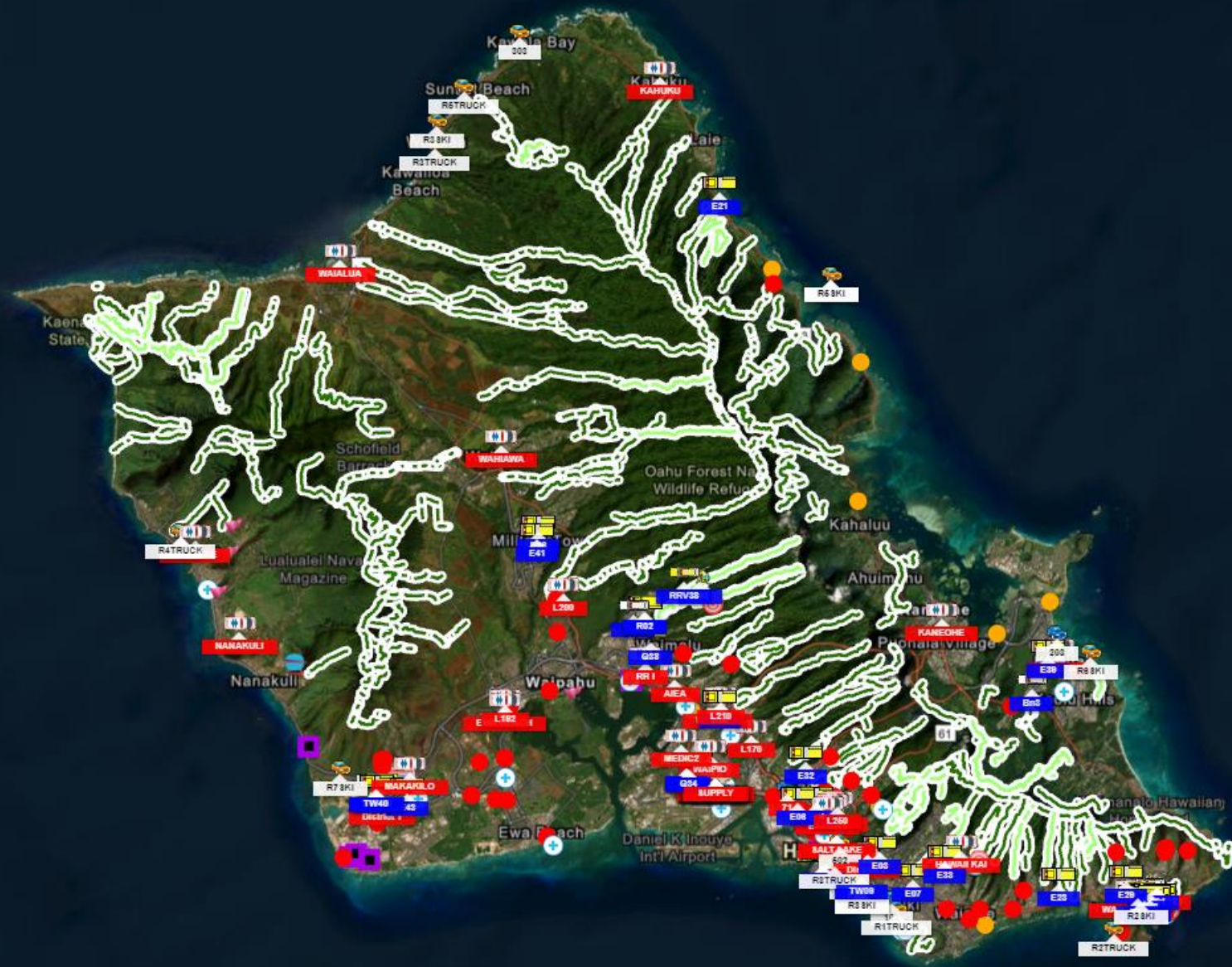
# Mission

The Mission of the Honolulu Fire Department is to provide for a safer community through prevention, preparedness, and effective emergency response.

The Aviation Program provides effective emergency response to rescue and firefighting incidents. The Aviation Program also provides response to disaster incidents, reconnaissance missions, and other necessary governmental functions.

# Area of Response

The Aircraft Section serves the island of O'ahu and its territorial waters, which include the ocean up to three miles from the shoreline.



# Weather Resources

National Weather Service

ATIS

1800WXBRIEF

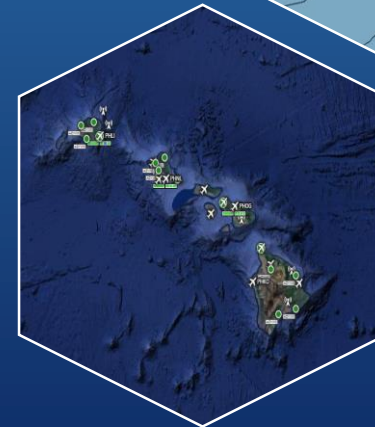
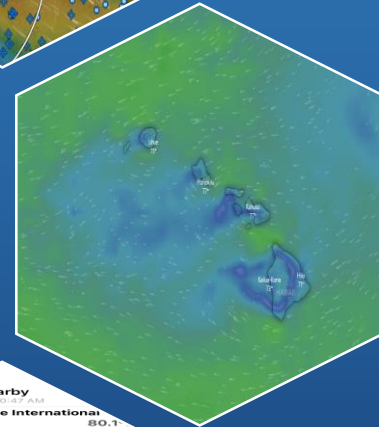
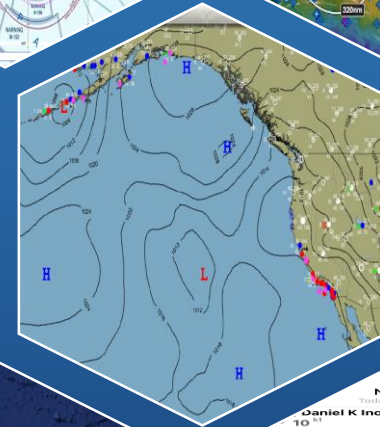
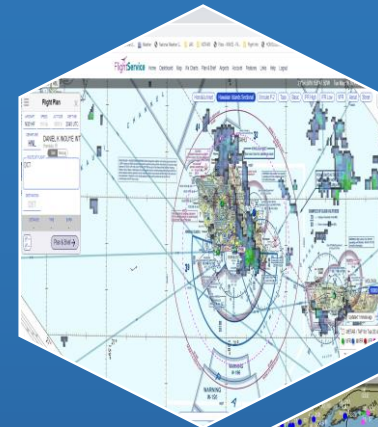
ForeFlight

Live Radar Apps

[weathercams.faa.gov](http://weathercams.faa.gov)

[windy.com](http://windy.com)

AeroWeather



Nearby	
<b>Daniel K Inouye International</b> 10 NM 80.1° 168L 200° 12512 x 150 ft scattered clouds at 3600 ft 10 miles broken clouds at 3500 ft 0948 204 8000 x 200 ft	72.0°F 66.0°F 82% 30.10 inHg 55 min 1 NM 248° (WSW) PHJR 79.0°F 63.0°F 58% 30.12 inHg 9 NM 264° (W) PHNG 72.0°F 68.0°F 74% 30.10 inHg 37 min 11 NM 45° (NE) PHHI 75.2°F 63.6°F 60% 30.13 inHg 13 min 12 NM 323° (NW) PHMK 81.0°F 63.0°F 54% 30.12 inHg 64 min 102° (ESE) PHNY 75.0°F 64.0°F 59% 30.16 inHg 63 min



# History of HFD Aircraft



**1968**  
Bell-47G4



**1972**  
Sikorsky Choctaw S-58



**1980**  
MD500D



# Current Aircraft

## Three MD 520N Helicopters

- In service since 1995
- Single engine
- Features NOTAR system (No tail rotor)
- Range: 242 miles
- 2 hour flight time
- Capacity: Pilot plus 3 passengers



# Support Vehicles

## Helicopter Fuel Tender

- Carries equipment for helicopters
- Transports 500 gallons of Jet-A fuel
- Ability to refuel at remote locations
- Can hot refuel (no need to shut down aircraft)
- Allows for continuous operation of aircraft during extended missions and ability for single aircraft to respond directly to multiple incidents



# Support Vehicles

- 280 gallon Aviation Fuel Trailer
- Support tow vehicles
- SUV for Pilot response





# STAFFING

Every 24 hour shift:

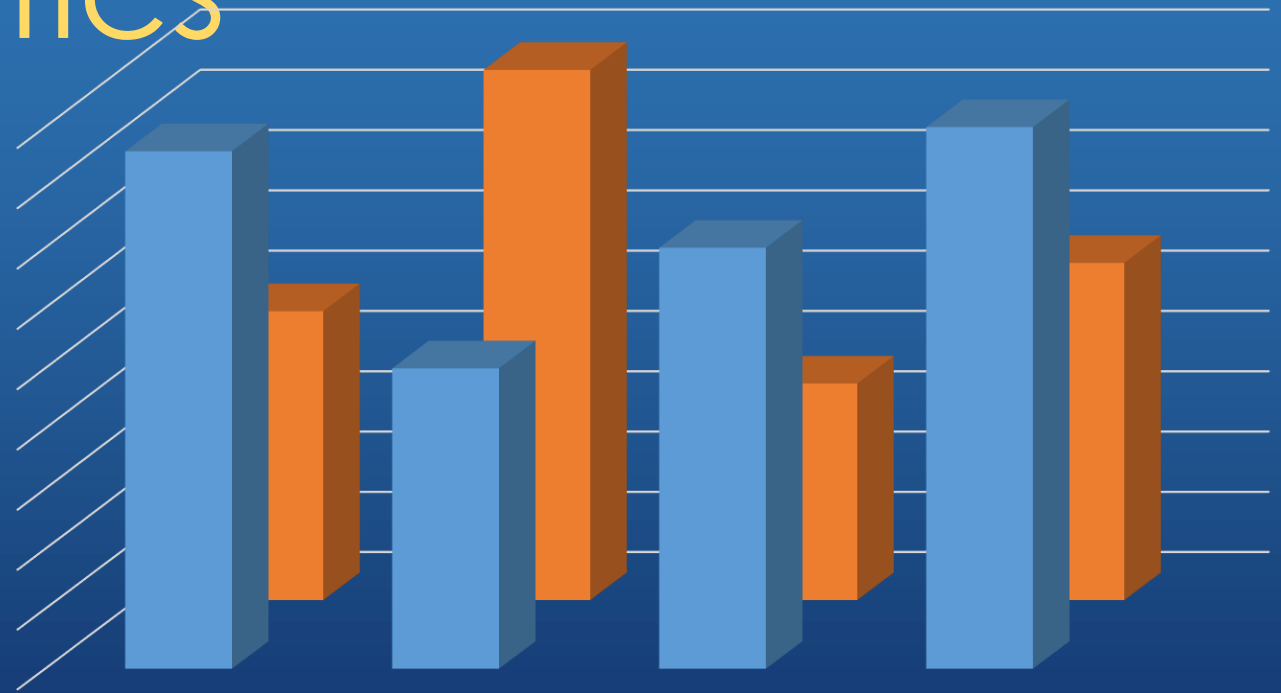
- Two pilots (Pilot and Senior Pilot)
- One Fuel Tender Operator



# Incident Statistics

Fiscal Year 2021-2022

- Responded to 646 incidents total
  - 30 Fire incidents
  - 616 Rescue incidents



# Fire Fighting

## Wildland Fires

- Aerial reconnaissance
- Water drops
- Fire containment and control
- Insertion of personnel
- Transport equipment



# Search & Rescue

## Land/Mountain

- Missing/lost hikers
- Extraction of injured patients
- Insertion of rescue personnel and equipment



# Search & Rescue

## Ocean

- Missing/overdue swimmers, divers, surfers
- Swimmers, surfers, divers in distress
- Assist disabled boats/watercraft
- Coordinate directly with Coast Guard and City Ocean Safety



# Future

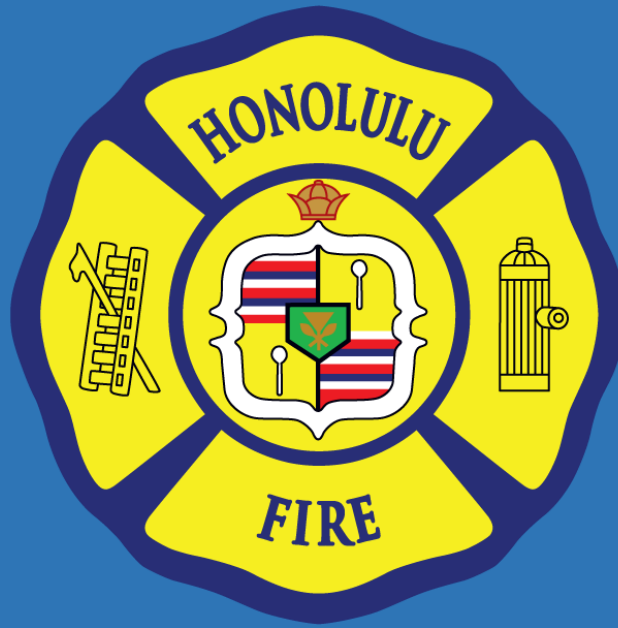
0-3 years.

- Acquisition of twin engine rescue and firefighting aircraft with hoist.
- Continue with new Pilot Training.
- Complete fourth 520N aircraft refurbishment.

3-10 years.

- Acquire second twin engine rescue and firefighting aircraft with hoist.
- Add necessary positions.





**HONOLULU**  

---

**FIRE DEPARTMENT**

*Pride, Service, Dedication*