

The background features a dark blue gradient with a starry pattern. On the left side, there are several circular gauges and flight paths. One large gauge has a scale from 140 to 260 in increments of 10. Other gauges and paths are scattered across the scene, some with arrows indicating direction. The overall aesthetic is technical and aviation-related.

THE THINGS I'VE FLOWN IN HAWAII UP UNTIL NOW

SEAN LEE

CFI-G, USHPA-P2

HAL A321 FO



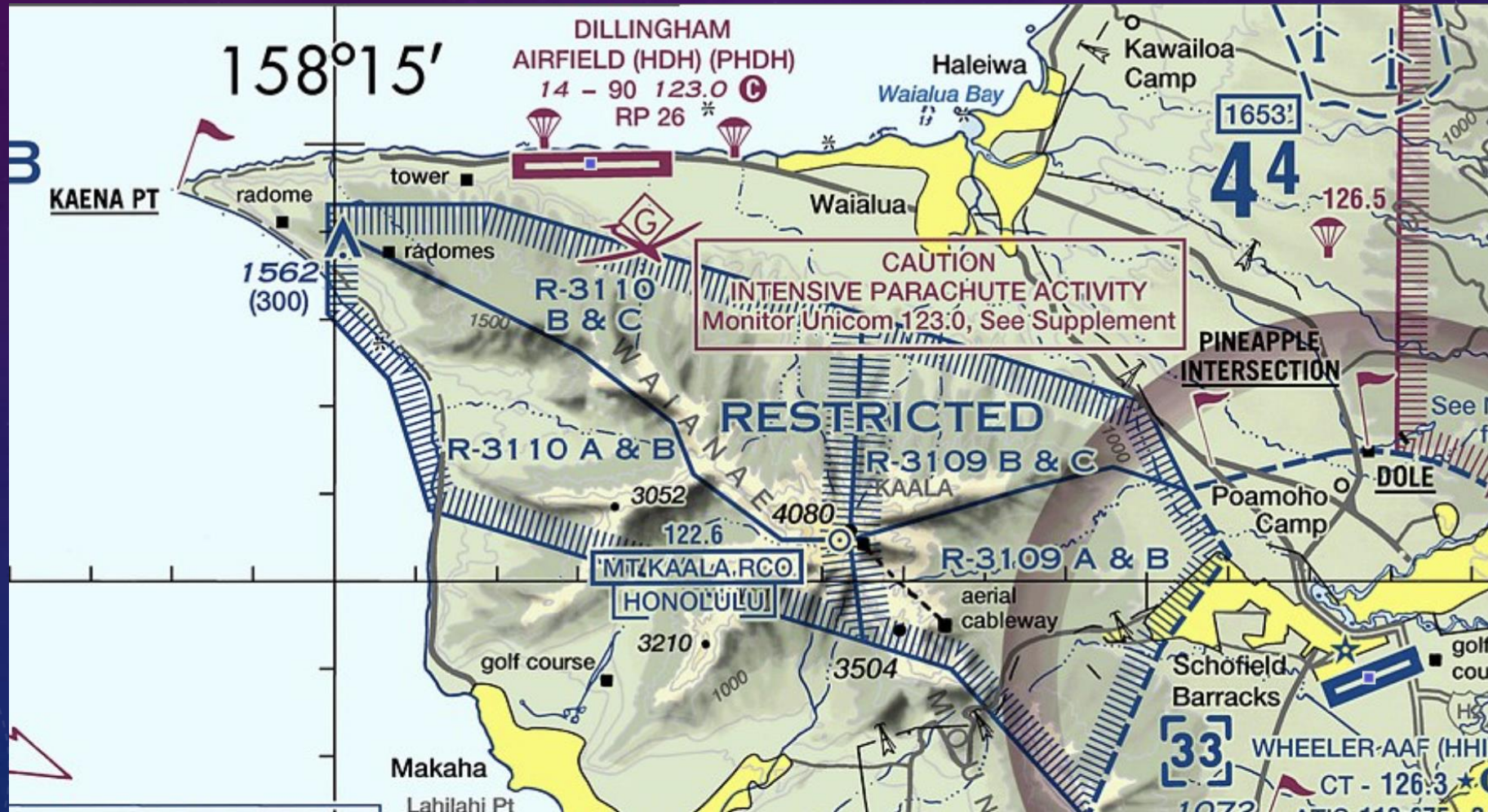
GLIDERS – DILLINGHAM

- Tour Pilot
- CFI-G
- Weather tools: Windy, HHI TAF, Show up





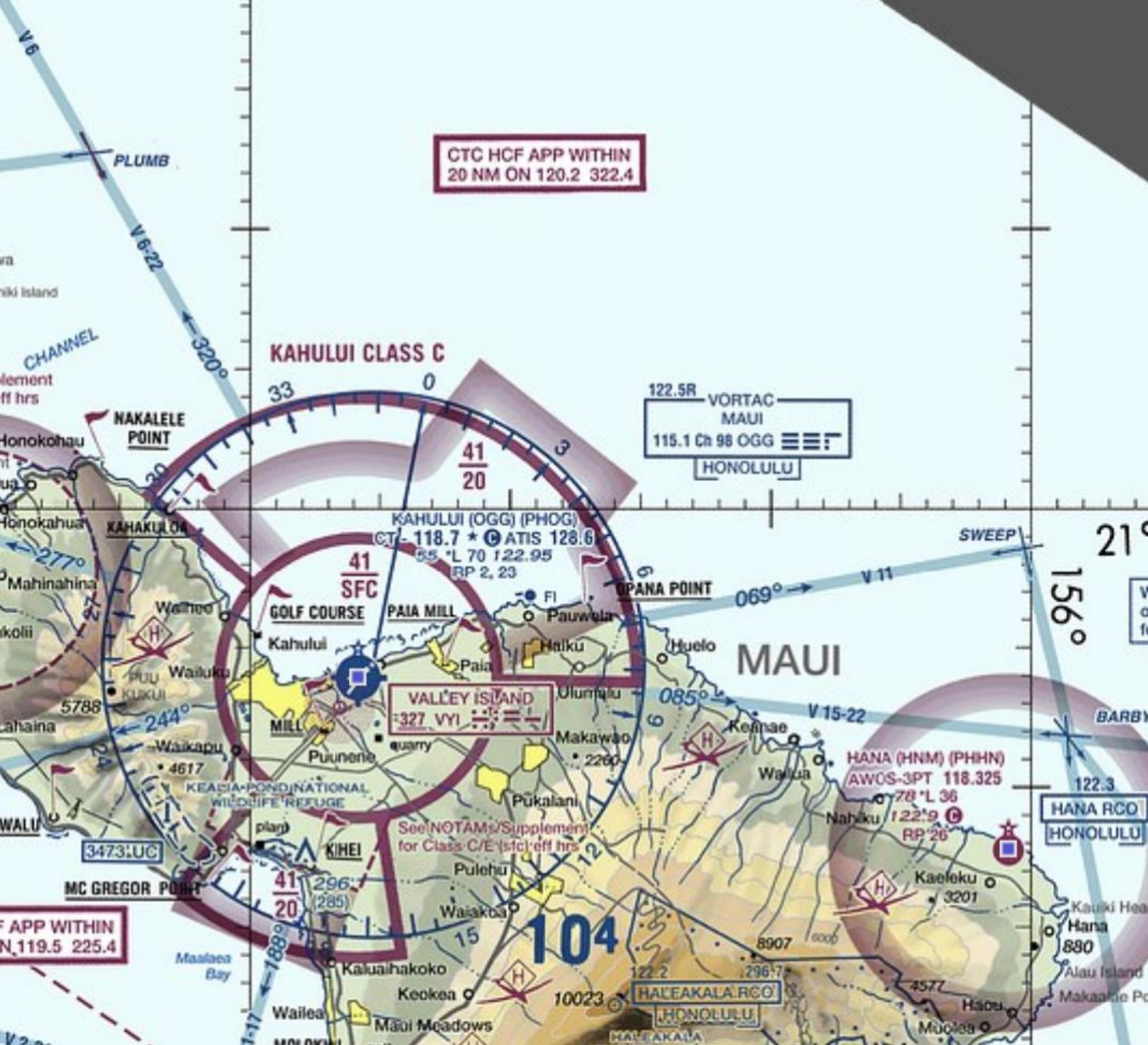
AIRSPACE - HAZARDS





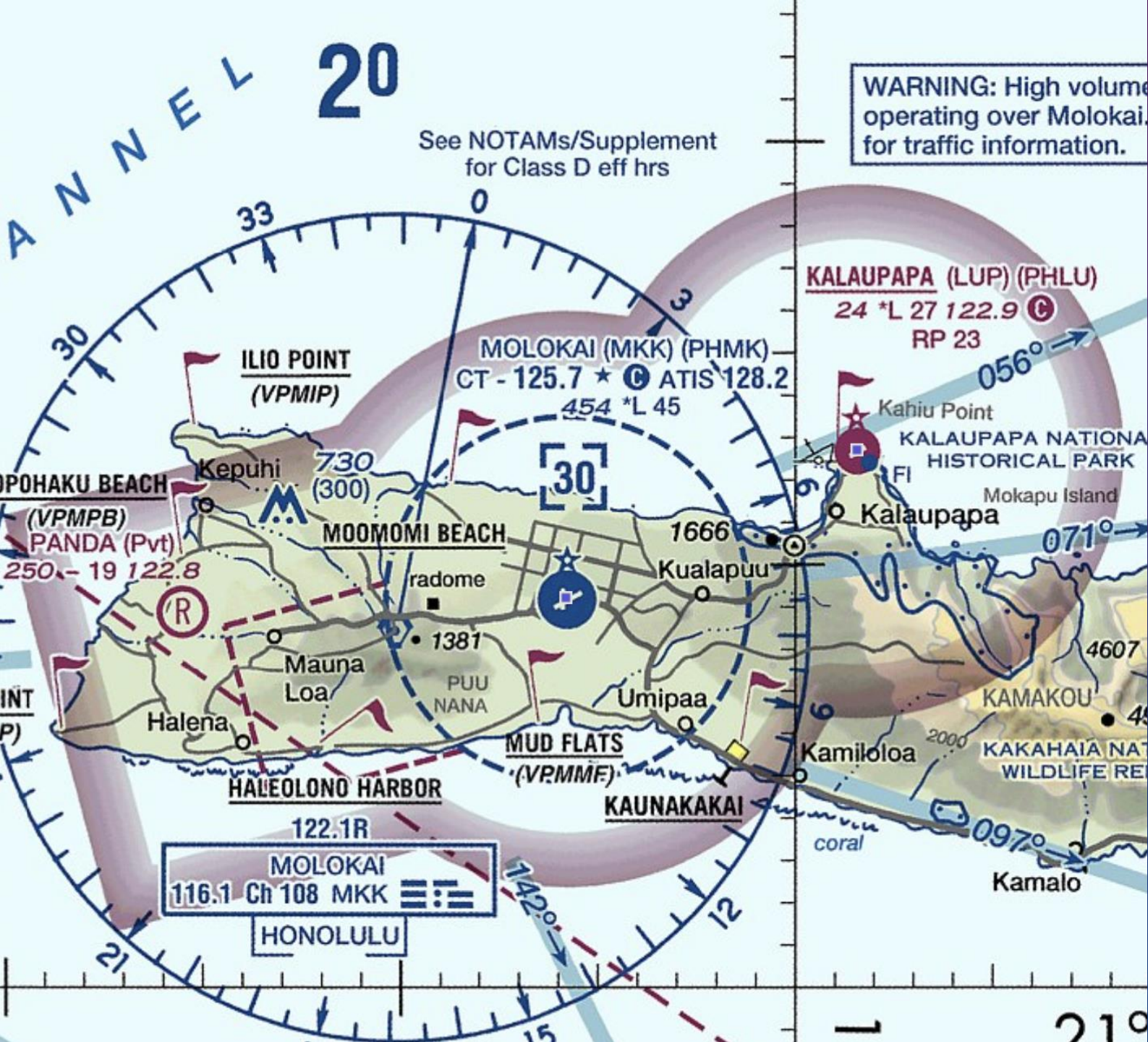
MOKULELE AIRLINES

- Late 2014 ~ 1 ish years
- Daytime VFR (Mostly)
- Some IFR, Some night. All single engine
- Pre-shift briefing, TAFs
- Hana, Kapalua, Molokai



HNM – DAY VFR

- OGG-HNM
- Low IFR
- No radar/radio with HCF
- No turn back



MOLOKAI

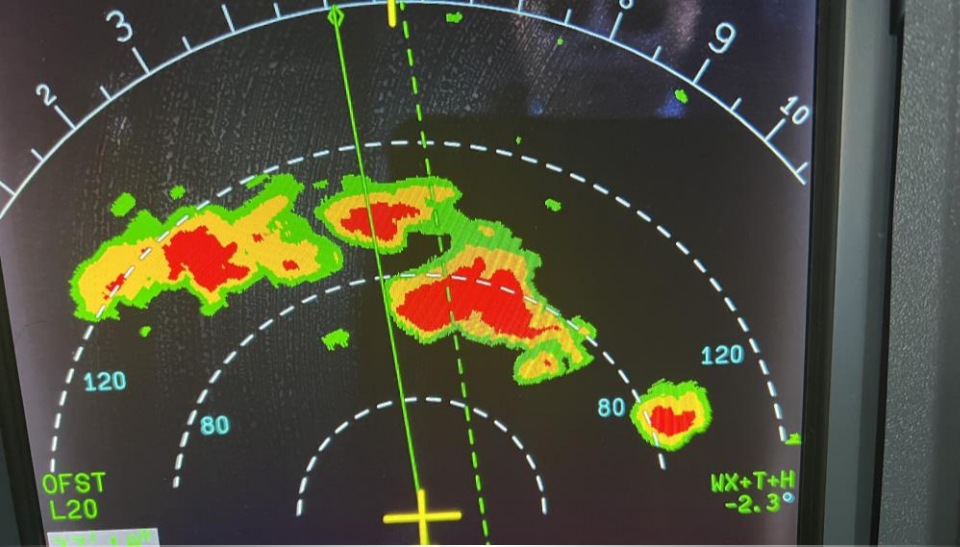
- Topside/MKK
- Kalaupapa
- Night: IFR Only. One in/out
- Timing/Busy airspace
- VOR approach
- Terrain on all sides

HAWAIIAN AIRLINES — A321 NEO



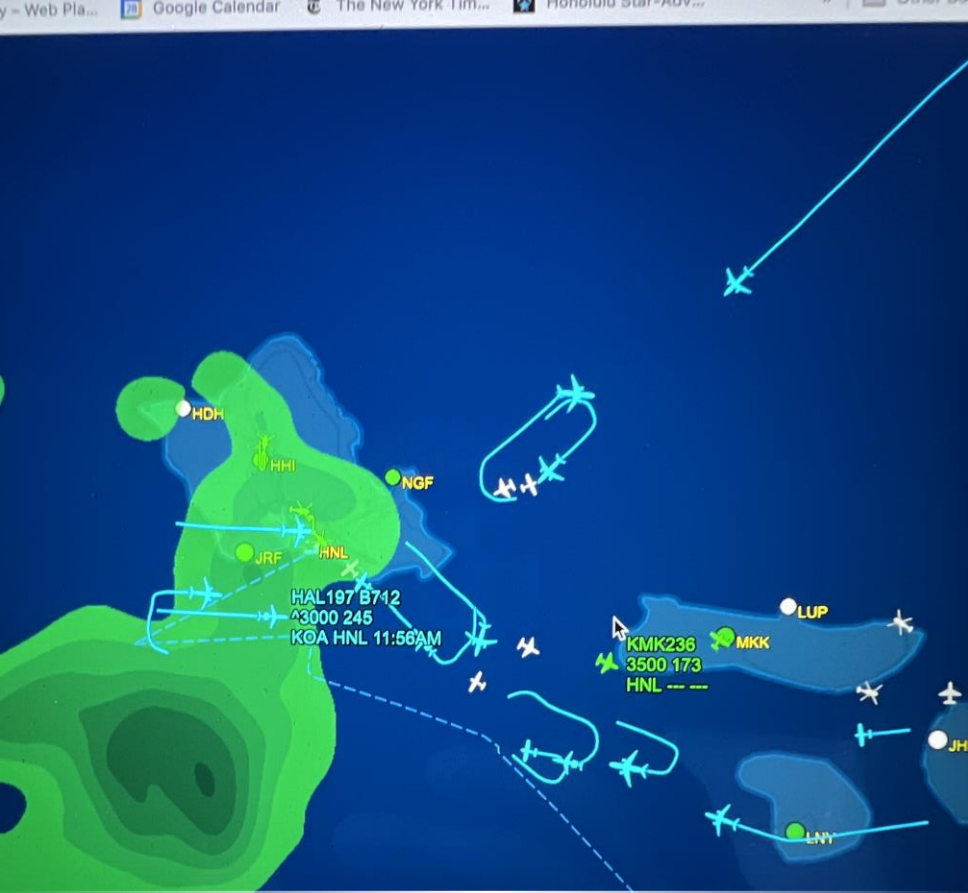
- Hired in 2017
- Mix of transpac and interisland flying
- Professional dispatchers – experts!





TRANSPAC FLYING

- Sam's presentation
- A330 vs A321
- Wx deviations in Oceanic airspace
- A321 Wx radar



HAL INTERISLAND OPERATIONS - HNL

- 08L is back open! (kind of)
- Flow control
- 26L operations – LDA/RNP



HONOLULU, HAWAII

AL-754 (FAA)

21336

LOC/DME I-EPC 109.1 Chan 28	APP CRS 304°	Rwy Idg TDZE Apt Elev 12000 10 13
---	------------------------	---

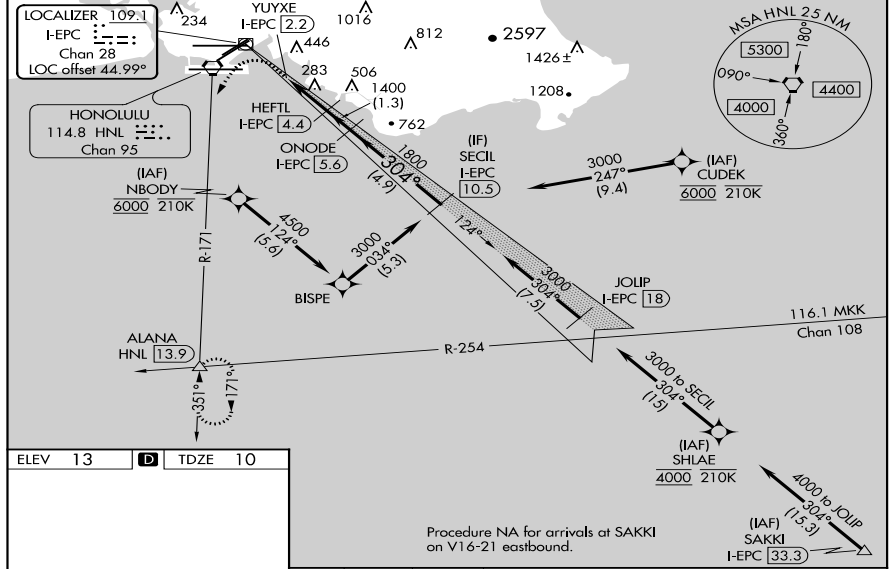
LDA RWY 26L
DANIEL K INOUE INTL (HNL) (PHNL)

DME required. From CUDEK, NBODY, SHLAE: RNAV 1-GPS required.

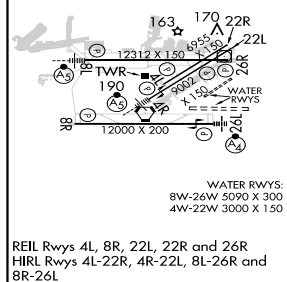
NA Circling Rwy 22R NA at night. Circling NA to sea lanes 4W, 8W, 22W and 26W. NBODY transition, CUDEK transition, SHLAE transition NA for Cat E aircraft. Follow flasher lights to Rwy 26L. Procedure NA when ALS or SFL inop. Circling Cat E NA. Circling NA for Cats A and B northwest of Rwy 8L-22R. Circling NA for Cats C and D north of Rwy 8L-26R.

MALSF MISSED APPROACH: Climb to 600 then climbing left turn to 3000 on HNL VORTAC R-171 to ALANA INT/ HNL 13.9 DME and hold.

D-ATIS 127.9 251.15	HCF APPROACH 118.3 269.0	HONOLULU TOWER 118.1 257.8 123.9 273.575 (Rwy 8R/26L)	GND CON 121.9 348.6	CLNC DEL 121.4 281.4
-------------------------------	------------------------------------	---	-------------------------------	--------------------------------



ELEV 13	TDZE 10
---------	---------



Procedure NA for arrivals at SAKKI on V16-21 eastbound.

VGSI and descent angles not coincident (VGSI Angle 3.00/TCH 75).

Use I-EPC DME when on the localizer course.

CATEGORY	A	B	C	D	E
S-LDA 26L	600-2	590 (600-2)			
C CIRCLING	680-2¼ 667 (700-2¼)	760-2¼ 747 (800-2¼)	820-2¼ 807 (900-2¼)	1400-3 1387 (1400-3)	NA

HONOLULU, HAWAII
Amdt 6A 25FEB21

21°19'N-157°55'W

DANIEL K INOUE INTL (HNL) (PHNL)
LDA RWY 26L

PAC, 20 APR 2023 to 15 JUN 2023

PAC, 20 APR 2023 to 15 JUN 2023

LDA 26L

HONOLULU, HAWAII

AI-754 (FAA)

21336

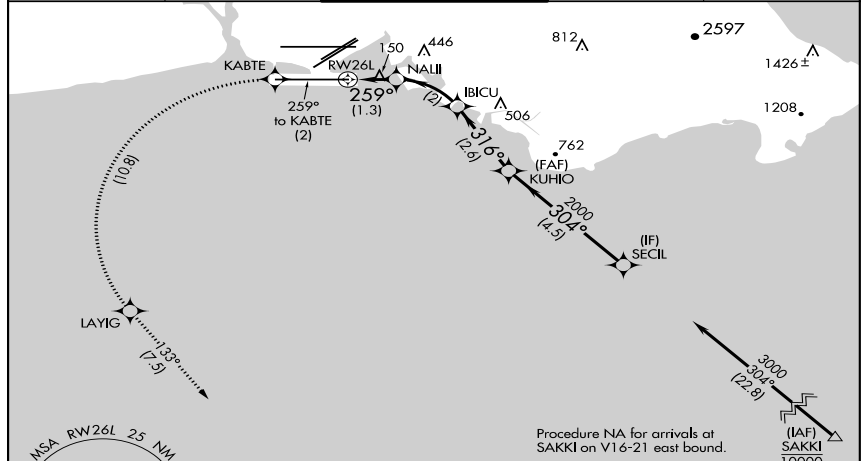
Rwy Idg	12000
APP CRS	259°
TDZE	10
Apt Elev	13

RNAV (RNP) RWY 26L

DANIEL K INOUE INTL (HNL) (PHNL)

RNP AR APCH, RF required.		MALSF	MISSED APPROACH: Climb to 3000 on track 259° to KABTE, left turn to LAYIG, then track 133° to ALANA and hold. Missed approach requires minimum climb of 234 feet per NM to 300.	
⚠ NA For uncompensated Baro-VNAV systems, procedure NA below 15°C (58°F) or above 53°C (128°F).				

D-ATIS	HCF APPROACH	HONOLULU TOWER	GND CON	CLNC DEL
127.9 251.15	118.3 269.0	118.1 257.8 123.9 273.575 (Rwy 8R/26L)	121.9 348.6	121.4 281.4



ELEV	13	TDZE	10

3000	KABTE	LAYIG	ALANA	SECIL
↑	↻	↻	△	↻
fr 259°		fr 133°		
GP 3.00°	TCH 75			
WATER RWYS:	8W-26W 3090 X 300 4W-22W 3000 X 150			
REIL Rwy 4L, 8R, 22L, 22R and 26R	HIRL Rwy 4L-22R 4R-22L, 8L-26R and 8R-26L			

AUTHORIZATION REQUIRED

HONOLULU, HAWAII
Orig-E 28FEB19

DANIEL K INOUE INTL (HNL) (PHNL)
RNAV (RNP) RWY 26L

21°19'N-157°55'W

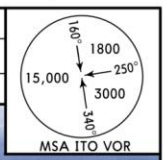
PAC, 20 APR 2023 to 15 JUN 2023

PAC, 20 APR 2023 to 15 JUN 2023

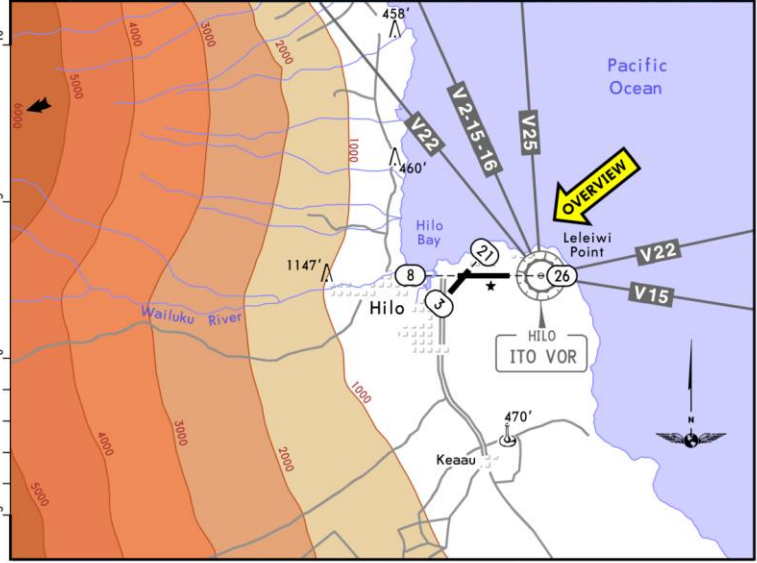
RNAV (RNP) 26L

JEPPESEN AIRPORT QUALIFICATION
PHTO/ITO 19 AUG 22 (19-01) HILO, HAWAII
HILO INTL

1. Airport Qualification: Mountainous Terrain	Apt Elev 38'
2. Rapidly Rising Terrain to the West	2 NM East Hilo
3. Noise Sensitive Areas	N19 43.2 W155 02.9



OVERVIEW



CHANGES: Airport heading note withdrawn, MSA. © JEPPESEN, 1994, 2022. ALL RIGHTS RESERVED.

ITO RUNWAY 8

- No straight-in ILS
- Circle 26 or 08 Visual (not charted)
- Most of the time – Landing runway 08

- PHTO ▾
- Rwy ▾
- INFO/WX
- REF
- CO
- STAR
- APP
- TAXI 1
- SID

A321 Hilo RWY 08 Visual Approach

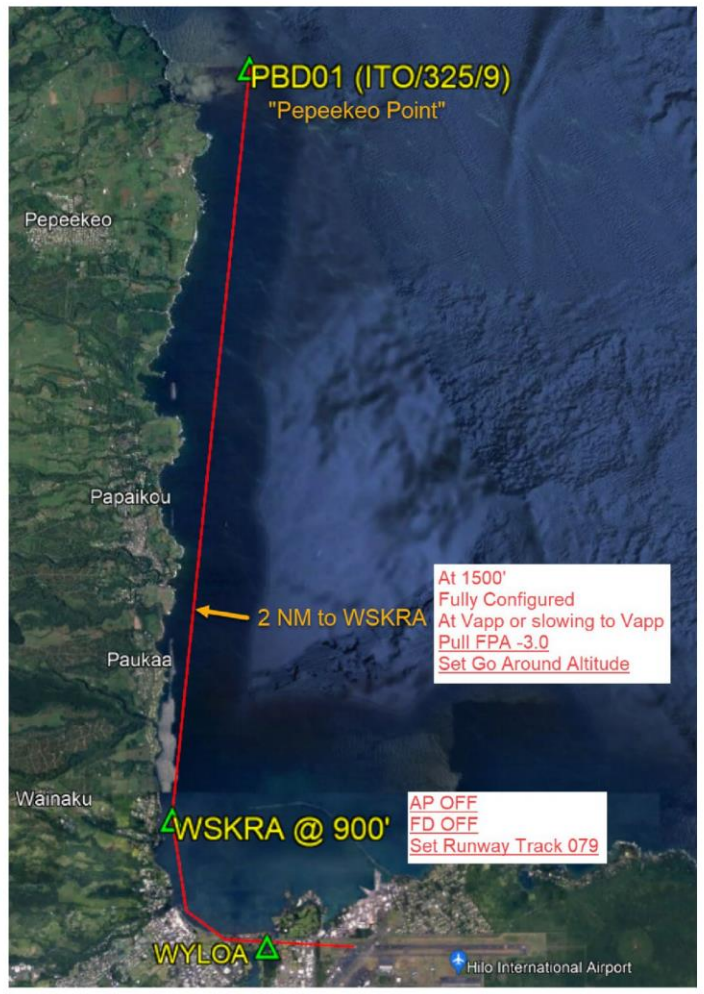
Final Turn



- PHTO ▾
- Rwy ▾
- INFO/WX
- REF
- CO
- STAR
- APP
- TAXI 1
- SID

A321 Hilo RWY 08 Visual Approach

VISUAL APPROACH OVERVIEW





PARAGLIDING!

- Torrey Pines – San Diego
- Few flights in Hawaii





MAKAPU'U

- Wind
- Road
- Beach
- Bus



