

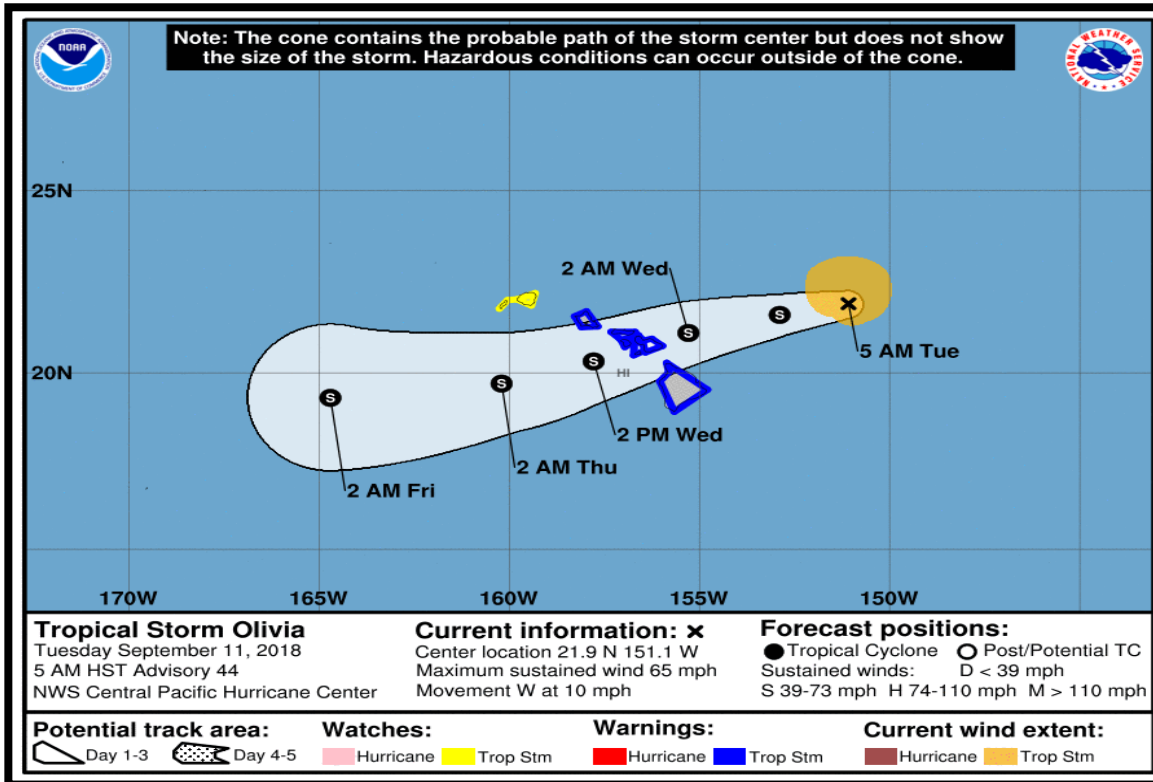


Tropical Storm Olivia

Make sure you are using the latest forecast. Updated forecasts are issued every 6 hours.



Tropical Storm Olivia moving west



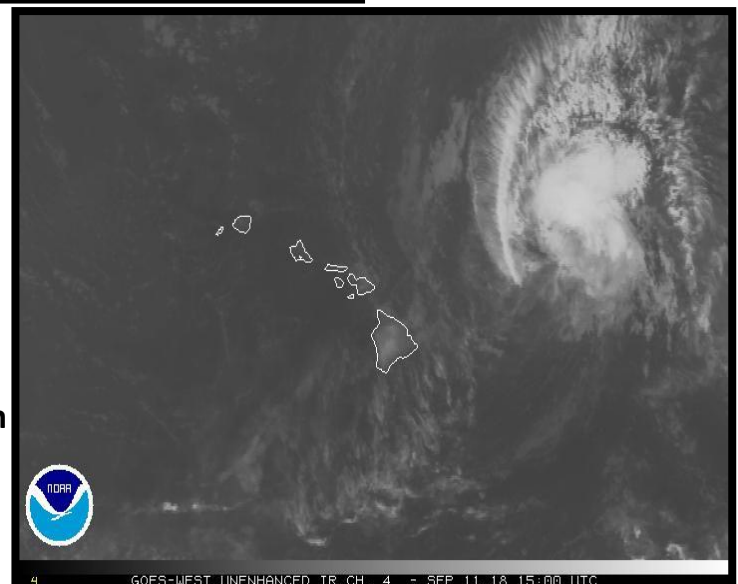
Current Advisories

- Tropical Storm Warning for Big Island, Maui County, and Oahu
- Tropical Storm Watch for Kauai
- Flash Flood Watch for the state starting Tuesday evening.

Tropical Storm Warning means tropical storm conditions (sustained winds 39-73 mph) are expected in the next 36 hours.

Lat: 21.9N	Lon: 151.1W
Wind: 65 MPH	Pres: 999 MB
Moving: W AT 10 MPH	

- A turn to the west-southwest is expected later today, with a slight increase in forward speed. This general motion will continue for the next couple of days. On the forecast track, the center of Olivia will be moving over portions of the main Hawaiian Islands late tonight into Wednesday.
- Olivia is expected to remain a tropical storm as it moves over the islands.



Do not use after: Sep-11-2018 12:00 pm