

Tropical Weather Outlook

Central Pacific Hurricane Center
National Weather Service
Honolulu, HI

TWO Issued: 800 AM HST Fri Jul 8 2022

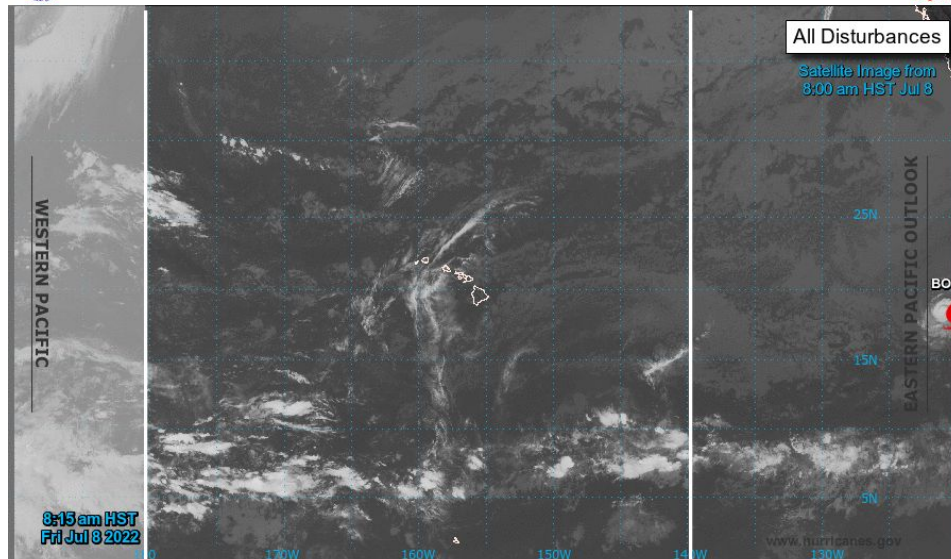
Briefing produced as guidance for emergency planners, responders, and local, state, and national agencies with a life-saving mission.

Tropical Weather Outlook

Central Pacific: 2-day and 5-day Outlook

Two-Day Graphical Tropical Weather Outlook

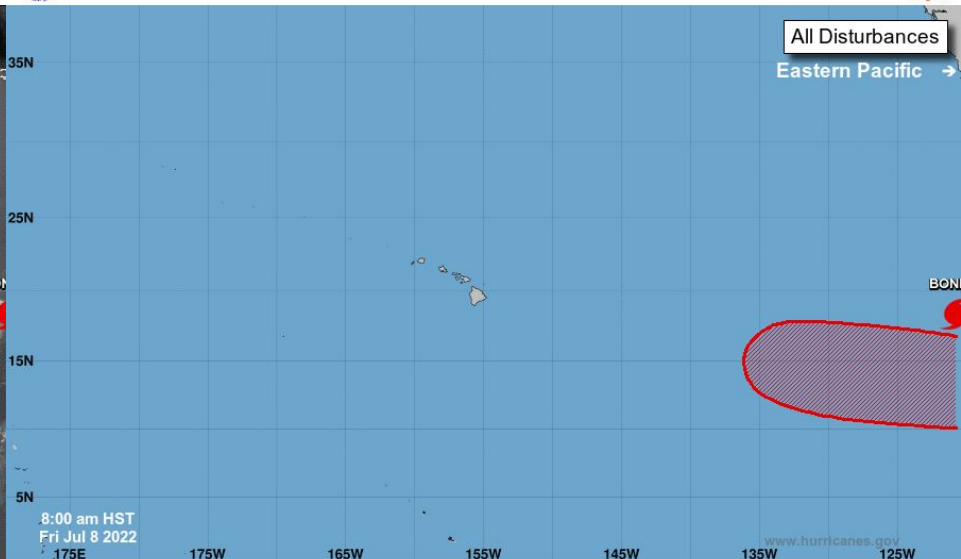
Central Pacific Hurricane Center Honolulu, Hawaii



Current Disturbances and Two-Day Cyclone Formation Chance: < 40% 40-60% > 60%
Tropical or Sub-Tropical Cyclone: Depression Storm Hurricane
 Post-Tropical Cyclone or Remnants

Five-Day Graphical Tropical Weather Outlook

Central Pacific Hurricane Center Honolulu, Hawaii



Current Disturbances and Five-Day Cyclone Formation Chance: < 40% 40-60% > 60%
Tropical or Sub-Tropical Cyclone: Depression Storm Hurricane
 Post-Tropical Cyclone or Remnants

No tropical cyclones are expected during the next 5 days.

The National Hurricane Center in Miami is issuing advisories on recently downgraded Tropical Storm Bonnie, located approximately 2,100 miles east of Hawaii.

- Bonnie is expected to weaken to a remnant low this weekend, and dissipate before reaching 140W.
- The remnant moisture may increase rainfall over the Hawaiian Islands around Wednesday/Thursday of next week.

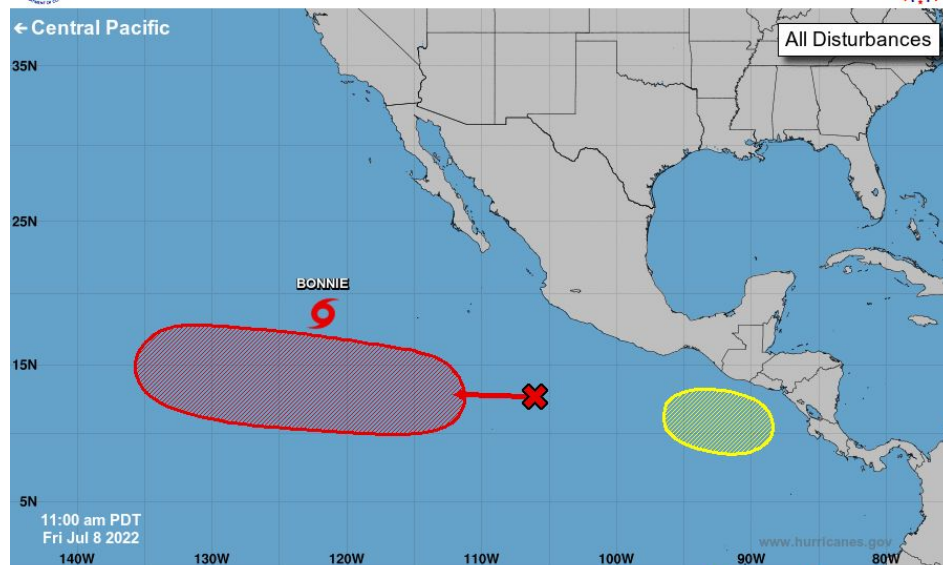
A disturbance to the southeast of Bonnie has a high probability of formation over the next several days.

- This system is expected to develop as it moves west early next week. There is a chance that this system crosses 140W into the central Pacific as an intact tropical cyclone by Wednesday/Thursday of next week.



Five-Day Graphical Tropical Weather Outlook

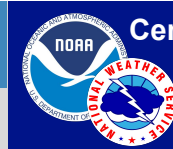
National Hurricane Center Miami, Florida



Current Disturbances and Five-Day Cyclone Formation Chance:  < 40%  40-60%  > 60%

Tropical or Sub-Tropical Cyclone:  Depression  Storm  Hurricane

 Post-Tropical Cyclone or Remnants



Week 1 (Jul 06 - Jul 12):

No tropical hazards near Hawaii

Week 2 (Jul 13 - Jul 19):

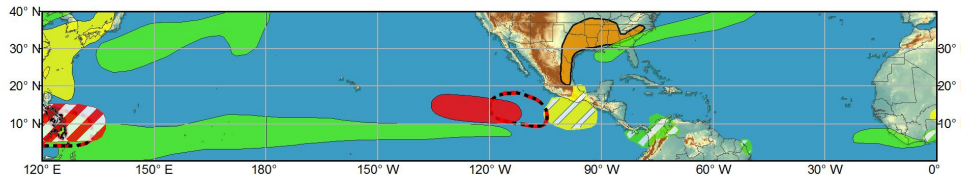
Watching the developing disturbance to the southeast of Bonnie



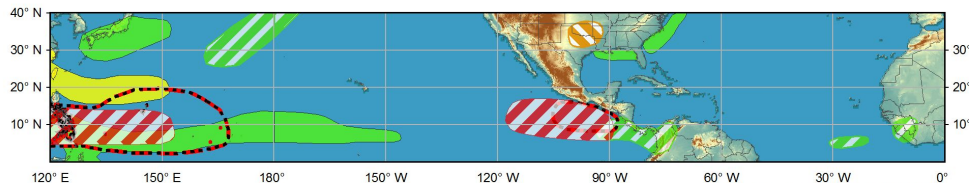
Global Tropics Hazards and Benefits Outlook - Climate Prediction Center



Week 1 - Valid: Jul 09 2022 - Jul 12 2022



Week 2 - Valid: Jul 13 2022 - Jul 19 2022



Produced: 07/08/2022
Forecaster: Allgood

Confidence
High Moderate

- Tropical Cyclone Formation** Development of a tropical cyclone (tropical depression - TD, or greater strength).
- Prior TC Formation Outlook** Tropical cyclone outlook from previous release.
- Above-average rainfall** Weekly total rainfall in the upper third of the historical range.
- Below-average rainfall** Weekly total rainfall in the lower third of the historical range.
- Above-normal temperatures** 7-day mean temperatures in the upper third of the historical range.
- Below-normal temperatures** 7-day mean temperatures in the lower third of the historical range.

Product is updated once per week. The product targets broad scale conditions integrated over a 7-day period for US interests only. Consult your local responsible forecast agency.

