

Partnerships in the Western Carolinas and Northeast Georgia

The GSP Integrated Warning Team Charlotte - 2016 Workshop Host

Michael Tobin, MPA

Emergency Management Coordinator

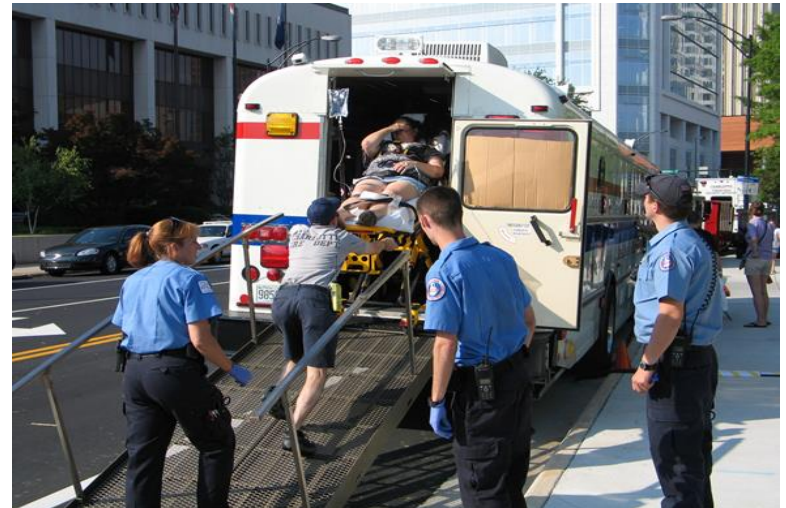
**Charlotte-Mecklenburg Emergency Management Office /
Charlotte Fire Department**



Decision Support System (DSS)

- Decision Support: Increase direct, interpretive support to public sector officials and emergency responders for incidents of national, regional, or local significance.
- Improve Weather Decision Services for events that threaten Safety, Health, The Environment, Economic Productivity, or Homeland Security.

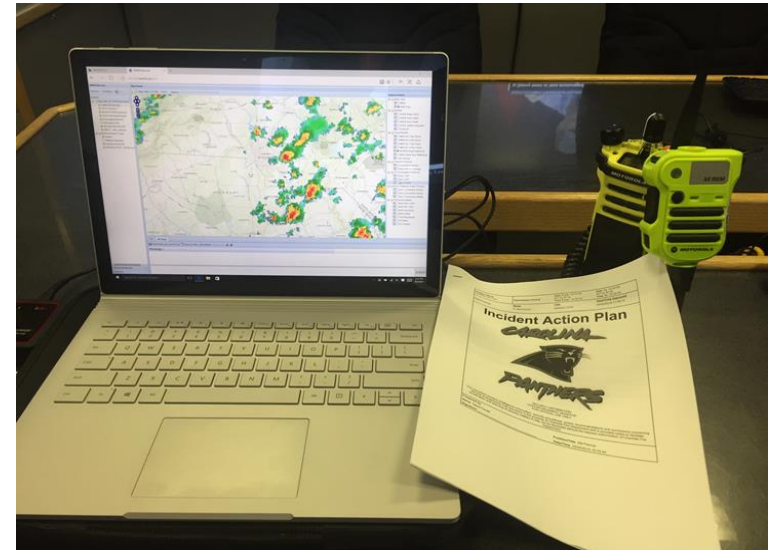
****As defined by the National Weather Service Strategic Plan****



Charlotte-Mecklenburg Process

- Initial call placed to NWS-GSP approximately 5-days prior to event.
- Event specifics...location, time, estimated crowd size and ancillary events.
- Primary notification to “Mecklenburg Warning Point” for 24-7 Notification.
- Secondary notification to EM Representative via cell phone.
- Based upon information provided, all parties working the event are notified including Event Promoter, Venue, CFD, CMPD, Medic.
- General Public informed via Social Media (Twitter & Facebook)
- If necessary, evacuation or shelter in-place at venue.

- Continued monitoring of weather from the Incident Command Post or Mobile Operations Center prior to the event and during the event.
- DSS Events include:
 - 2012 Democratic National Conv.
 - Carolina Panthers Home Games
 - Speed Street (Uptown CLT)
 - Pride Festival (Uptown CLT)
 - Large Outdoor Events w/ increased attendance. (50K +)



Future Use of DSS

- Prolonged Incidents and/or multi-day incidents within a specific geographic location.
- Dive / Body Recovery Incidents with prolonged operations.
(Safety of Divers in the water & boat crews on the water)
Potential of pop-up storms especially during summer months.
- Hazardous Materials Incidents with weather impacts to the incident.



- Emergency Management has responded to the following weather related incidents:
 - Urban Flooding
 - Tornadoes (EF-0 & EF-2)
 - Hurricanes (Matthew and many others)
 - Winter Storms
 - Heat Waves...and many other weather related events
 - Weather is very important to Emergency Management Operations...



ALL-HAZARDS & ALL-WEATHER

